

TITLE: Proteomic Analysis of Human Omental Adipose Tissue in the Polycystic Ovary Syndrome Using Two-Dimensional Difference Gel Electrophoresis and Mass Spectrometry

RUNNING TITLE: Proteomic Analysis of Omental Fat in PCOS

AUTHORS: Marta Cortón¹, José I. Botella-Carretero², Juan A. López³, Emilio Camafeita³, José L. San Millán², Héctor F. Escobar-Morreale² and Belén Peral^{1,4}

ADDRESSES:

¹Instituto de Investigaciones Biomédicas, Consejo Superior de Investigaciones Científicas & Universidad Autónoma de Madrid, E-28029 Madrid, Spain, ²Departments of Endocrinology and Molecular Genetics, Hospital Universitario Ramón y Cajal & Universidad de Alcalá, E-28034 Madrid, Spain, ³Unidad de Proteómica, Centro Nacional de Investigaciones Cardiovasculares, E-28029 Madrid, Spain

⁴To whom correspondence should be addressed. E-mail: bperal@iib.uam.es

ABSTRACT

BACKGROUND: Our aim was to study the protein expression profiles of omental adipose tissue biopsies obtained from morbidly obese women with or without polycystic ovary syndrome (PCOS) at the time of bariatric surgery to evaluate the possible involvement of visceral adiposity in the development of PCOS.

METHODS: Ten PCOS patients and 9 control samples were included. We used two-dimensional difference gel electrophoresis (2D-DIGE) followed by in-gel digestion, and mass spectrometry (MS) of selected protein spots.

RESULTS: The 2D-DIGE technology allowed the analysis of approximately 1840 protein spots in the comparative study of control and patient proteomes, revealing 15 statistically significant spot changes (>2 -fold, $P<0.05$). Unambiguous protein identification was achieved for 9 of these 15 spots by MS. This preliminary study revealed differences in expression of proteins that may be involved in lipid and glucose metabolism, oxidative stress processes and adipocyte differentiation, including proapolipoprotein Apo-A1, annexin V, glutathione S-transferase M3 (GSTM3), triosephosphate isomerase, peroxiredoxin 2 isoform a, actin, and adipocyte plasma membrane-associated protein. The most relevant finding was an increase of GSTM3 in the omental fat of PCOS patients confirming previous studies conducted by our group.

CONCLUSIONS: Proteomic analysis of omental fat reveals differential expression of several proteins in PCOS patients and non-hyperandrogenic women presenting with morbid obesity. The application of this novel methodology adds further evidence supporting the role of visceral adiposity in the pathogenesis of PCOS.

KEY WORDS: ovary/polycystic/proteomics/hyperandrogenism/visceral adipose tissue.

Introduction

The polycystic ovary syndrome (PCOS) is a common endocrine disorder that affects 6 to 7% of premenopausal women (Asunción *et al.*, 2000; Diamanti-Kandarakis and Christakou, 2006). PCOS is characterized by hyperandrogenism and ovarian dysfunction (Azziz *et al.*, 2006), and appears to be a complex disorder in terms of inheritance that results from the interaction of protective and predisposing genomic variants with a very important environmental influence, including diet and life-style (Escobar-Morreale *et al.*, 2005b).

The primary defect in PCOS appears to be an exaggerated androgen secretion by ovarian theca cells (Nelson *et al.*, 2001) – and possibly by the adrenals – upon which several factors act triggering the development of the PCOS phenotype. Among these factors, abdominal adiposity and/or obesity play a major role in many PCOS patients, in part because of the induction of insulin resistance and hyperinsulinemia, considering that hyperinsulinemia facilitates androgen secretion in the ovaries and adrenals (Gambineri and Pasquali, 2006).

PCOS patients are frequently obese (Gambineri and Pasquali, 2006). As many as 42% of women with PCOS were overweight or obese in population-based studies conducted in the U.S.A. (Azziz *et al.*, 2004), and, conversely, up to 28% of overweight or obese women seeking medical advice for weight loss present with PCOS (Alvarez-Blasco *et al.*, 2006). Furthermore, recent data from our group suggest that obesity is the leading actor in the development of the PCOS associated with morbid obesity, because the marked and sustained weight loss achieved after bariatric surgery actually resolved PCOS in such patients (Escobar-Morreale *et al.*, 2005a).

This is not really surprising considering that adipose tissue is no longer considered as a mere energy storage depot, but an extremely active endocrine organ that secretes hormones, growth factors, adipokines, and other molecules, and participates in a large number of physiological processes that are involved in the maintenance of energy homeostasis of the body (Rosenbaum *et al.*, 1997). Furthermore, the hyperandrogenism characteristic of PCOS patients may influence the pathophysiology of adipose tissue,

because androgen excess facilitates the deposition of abdominal visceral fat in human and animal models (Xita and Tsatsoulis, 2006). It is noteworthy that abdominal adiposity may develop even in lean PCOS patients (Carmina *et al.*, 2007), and we have proposed that the PCOS phenotype could be maintained in affected women by a vicious circle of androgen excess facilitating abdominal adiposity, insulin resistance, and further androgen excess (Escobar-Morreale and Millan, 2007). For this reason, we considered of interest the study of gene and protein expression profiles of abdominal adipose tissue in PCOS patients.

Genomic and proteomic profiling provide tools to efficiently ascertain differences in the expression of thousands of genes or proteins in complex diseases. We have recently used genome-wide expression profiling of PCOS adipose tissue by means of DNA microarrays (Cortón *et al.*, 2007). Our results suggested that the contribution of abdominal obesity to the pathogenesis of PCOS is not limited to the facilitation of insulin resistance described above, but also involves other several biological pathways. This genomic study revealed changes in the expression patterns of genes encoding for components of several biological pathways related to insulin and Wnt signaling, inflammation, immune function, lipid metabolism and oxidative stress (Cortón *et al.*, 2007). Gene Ontology (GO) annotations and detailed analysis of the altered pathways highlighted the role of oxidative stress in PCOS omental fat. It is noteworthy that the GO analysis has revealed a significant overrepresentation of GO terms related to *oxidoreductase activity and toxicity* including *response to toxin and nicotinamide adenine dinucleotide (phosphate) dehydrogenase (quinone) activity*, and *oxidoreductase activity* in PCOS patients compared with control subjects. The most relevant finding was an increase of glutathione S-transferase M3 (GSTM3) gene that was also confirmed by quantitative RT-PCR. Interestingly the protein encoded by this gene, an antioxidant enzyme involved in the degradation of cytotoxic products in the cell, has also been found overexpressed in the proteomic comparative analysis described in this report and confirmed by Western blot.

DNA arrays measure only changes at the mRNA level, whereas biological functions are mainly exerted by proteins. Therefore, gene expression may not accurately reflect biological function because differences in translational regulation and post-translational events also influence the proteome. To

94 address the role of omental adipose tissue in PCOS we have carried out a comparative proteomic study
95 using high resolution two-dimensional gel electrophoresis (2-DE). To circumvent the problems associated
96 with making comparisons across gels (Duncan and Hunsucker, 2005) regarding reproducibility and
97 experimental variability, we have resorted to fluorescence two-dimensional difference gel
98 electrophoresis (2-D DIGE), a technology that provides an increase in analytical precision, dynamic range
99 and sensitivity allowing a reproducible and reliable comparative analysis of samples (Alban *et al.*, 2003).

100 A proteomic approach has been recently applied to the study of PCOS focusing on ovarian tissue
101 using conventional 2-DE and MALDI-TOF (Ma *et al.*, 2007). In addition, serum samples from PCOS
102 patients have been analysed using a prefractionation method together with 2-DE and MALDI-TOF
103 (Matharoo-Ball *et al.*, 2007). The SELDI technology has allowed to obtain differential protein profiles in
104 serum samples from PCOS patients (Zhao *et al.*, 2007; Zhao *et al.*, 2005); however, these profiling studies
105 need further efforts to identify and validate protein candidates associated to expression differences.

106 We here describe the first proteomic analysis of the role of omental fat in PCOS. Despite that
107 proteomic-based approaches have been widely used to study different human tissues in a variety of
108 pathologies, to our knowledge no reports have been published using this approach in human omental
109 adipose tissue. To date, only two studies have investigated the proteome of human adipose tissue. One
110 report from our group presented, for the first time, a protocol for the extraction, separation and
111 identification of human adipose tissue proteins by conventional 2-DE followed by mass spectrometry
112 (Cortón *et al.*, 2004). In another work, Celis *et al* (Celis *et al.*, 2005) reported the identification of proteins
113 from mammary adipose tissue in breast cancer patients.

114 To provide new insights into the role that visceral adipose tissue plays in the pathophysiology of
115 PCOS in morbidly obese women, we have conducted a comparative proteomic study using biopsies
116 obtained during bariatric surgery in these patients. Interestingly, our present results confirm the relevance
117 of oxidative stress processes in PCOS, in agreement with those obtained using genomic strategies (Cortón
118 *et al.*, 2007).

119

Materials and Methods

Subjects

Nineteen morbidly obese premenopausal women submitted for bariatric surgery were included in the present study: ten PCOS patients [age 31.6 ± 7.5 yr; body mass index (BMI) 54.3 ± 10.1 kg/m²] and nine non-hyperandrogenic women (age 38.2 ± 6.2 yr; BMI 50.8 ± 6.2 kg/m²). These women were selected from a larger sample of consecutive morbidly obese patients only on the basis of availability of omental fat samples obtained during surgery. The study was conducted according to the recommendations of the Declaration of Helsinki and was approved by the ethics committees of Hospital Ramón y Cajal (Madrid). Signed informed consent was obtained from all subjects.

The diagnosis of PCOS was established by the presence of oligo-ovulation, clinical and/or biochemical hyperandrogenism, and exclusion of hyperprolactinemia, non-classic congenital adrenal hyperplasia and androgen-secreting tumors (Azziz *et al.*, 2006; Zawadzki and Dunaif, 1992). Hirsutism was quantified by the modified Ferriman-Gallwey score (Hatch *et al.*, 1981). Evidence for oligo-ovulation was provided by chronic oligomenorrhea or amenorrhea in all the patients. The controls had no signs of hyperandrogenism, and had regular menstrual cycles every 26 to 34 days. None of the patients and controls was being treated with insulin sensitizers, statins or hormonal therapy.

The methods used to study the patients and controls, and to establish the diagnosis of PCOS, have been described earlier (Cortón *et al.*, 2007). Aliquots of several of the omental biopsies used here have been used previously for genomic techniques (Cortón *et al.*, 2007). The indication for bariatric surgery was morbid obesity in all patients, as defined by a body mass index (BMI) ≥ 40 kg/m², or BMI ≥ 35 kg/m² in the presence of significant comorbidity (National Institutes of Health Consensus Development Panel, 1991). During surgery, biopsies of omental adipose tissue were obtained, washed in chilled 9 g/L NaCl solution, partitioned into pieces, and immediately frozen in liquid nitrogen and stored at -80°C until protein extraction. The surgeon aimed to obtain the samples from similar anatomical locations in all the subjects.

Sample preparation

Proteins were extracted from omental adipose tissue by using a Polytron PT-1200C homogenizer (Kinematica AG, Lucerne, Switzerland) directly in lysis buffer (8.4 mol/L urea, 2.4 mol/L thiourea, 50 g/L 3-[(3-cholamidopropyl)dimethylammonio]-1-propanesulfonate, 50 mmol/L DTT). The suspension was shaken for 1 hour at room temperature and centrifuged at 200,000 x g for 1.5 hours, according to the procedure developed by our group (Cortón *et al.*, 2004). For 2D-DIGE, interfering components were removed using the 2D Clean Up Kit (GE Healthcare, Chalfont St. Giles, UK), and proteins were diluted in 7 mol/L urea, 2 mol/L thiourea, 40 g/L 3-[(3-cholamidopropyl)dimethylammonio]-1-propanesulfonate and 30 mmol/L Tris-HCl pH 8.5. The protein concentration was determined using the RD/DC Protein Assay (Bio-Rad Laboratories, Hercules, CA). For protein detection in Western blot analysis, adipose tissue was homogenized in radioimmuno precipitation assay, RIPA, buffer (1 g/L SDS, 5 g/L sodium deoxycholate, 10 g/L Nonidet P-40, 150 mmol/L NaCl, 50 mmol/L Tris-HCl, pH 8.0), supplemented with protease inhibitors (1 mmol/L phenylmethylsulfonyl fluoride, 0.002 g/L aprotinin and 0.002 g/L leupeptin). Cellular debris and lipids were eliminated by centrifugation of the solubilized samples at 18.000 g for 1.5 hours (4°C). Protein concentration was determined by the BCA Protein Assay (Pierce, Rockford, IL).

Conventional two-dimensional gel electrophoresis (2-DE)

Protein extracts (100-150 µg) were diluted in the rehydration solution (7 mol/L urea, 2 mol/L thiourea, 20 g/L 3-[(3-cholamidopropyl)dimethylammonio]-1-propanesulfonate and IPG buffer adding 50 mmol/L DTT (for IPG strips of pH 4-7) or 100 mmol/L hydroxyethyl disulfide (for IPG strips of pH 6-11 and 3-10). Proteins were applied by cup-loading or by in-gel rehydration as previously described (Cortón *et al.*, 2004). Proteins were separated in the second dimension using 12.5% Tris-glycine gels in a Protean II XL system (Bio-Rad Laboratories). 2-DE gels were silver stained using a protocol compatible with mass spectrometry (MS) (Shevchenko *et al.*, 1996).

Two-dimensional difference gel electrophoresis separation (2D-DIGE)

Proteins were labeled according to the manufacturer (GE Healthcare). Briefly, 50 µg of each PCOS and control protein extracts were minimally labeled with 400 pmol of the *N*-hydroxysuccinimide esters of Cy3 or Cy5 fluorescent cyanine dyes on ice in the dark for 30 min. An internal standard, containing equal amounts of each cell lysate, was labeled with Cy2 fluorescent dye and used in the whole set of experiments to ensure that every protein expressed in all five PCOS and control samples was present in the standard protein mixture. Since the same internal standard is run among all gels, it can be normalized and matched across the gels, which dramatically decreases gel-to-gel variation. The labeling reaction was quenched with 1 µl of 10 mmol/L lysine on ice for 10 min and in the dark.

The PCOS, control and internal standard protein samples were mixed adequately and run in a single gel (150 µg total protein). The proteins were separated in the first dimension with 24 cm immobilized pH gradient strips pH 4–7 at 0.05 mA/IPG strip in the IPGphor IEF II System (GE Healthcare) following a voltage increase in four steps: 300 V for 3h, linear gradient to 1000 V in 4h, linear gradient to 8000 V in 2h, and 8000 V until steady state. After the first dimension, the strips were equilibrated and separated on 12% Tris-glycine gels using an Ettan Dalt Six device (GE Healthcare). The gels were scanned with a Typhoon 9400 scanner (GE Healthcare) using appropriate wavelengths and filters for Cy2, Cy3, and Cy5 dyes. Image analysis performed with DeCyder versión 5.1 software (GE Healthcare).

In-Gel Digestion

To visualize protein spots, 2D-DIGE gels were silver stained. The silver-stained spots were excised manually and then digested automatically with modified porcine trypsin (sequencing grade; Promega, Madison, WI, USA) at a final concentration of 8 mg/L in 50 mmol/L ammonium bicarbonate using a Proteineer DP protein digestion station (Bruker-Daltonics, Bremen, Germany) according to the protocol of Shevchenko *et al.* (Shevchenko *et al.*, 1996). Peptide extraction was carried out with 5 g/L trifluoroacetic acid (99.5% purity; Sigma Chemical).

Matrix-assisted laser desorption/ionization tandem mass spectrometry [MALDI-MS(/MS)] and database searching

An aliquot of the digestion solution was mixed with an aliquot of α -cyano-4-hydroxycinnamic acid (Bruker-Daltonics) in 33% aqueous acetonitrile and 0.1% trifluoroacetic acid. This mixture was deposited onto a 600 μ m AnchorChip MALDI probe (Bruker-Daltonics) and allowed to dry at room temperature. MALDI-MS(/MS) data were obtained using an Ultraflex time-of-flight (TOF) mass spectrometer equipped with a LIFT-MS/MS device (Bruker-Daltonics) (Suckau *et al.*, 2003). Detailed analysis of peptide mass mapping data was performed using flexAnalysis software (Bruker-Daltonics). MALDI-MS and MS/MS data were combined through MS BioTools program (Bruker-Daltonics) to search the NCBI Inr database using Mascot software (Matrix Science, London, UK) (Perkins *et al.*, 1999).

Western Blot Analysis

Biopsies were obtained from five PCOS patients other than the five patients whose samples were used in 2D-DIGE and seven controls, four of which were different from the control samples used in 2D-DIGE. Fifteen micrograms of RIPA protein extracts were run on 12% SDS-PAGE and transferred to polyvinylidene fluoride membranes (Millipore, Billerica, MA) by conventional procedures. Equal protein loading and transferring were checked by Ponceau red stain. Membranes were immunoblotted with the rabbit anti-human GSTM3 polyclonal antibody (at a dilution of 1:2000, kindly donated by Dr. John Hayes). Anti-rabbit IgG coupled to horseradish peroxidase (Nordic Immunological Laboratories, Tilburg, The Netherlands) was used as secondary antibody. The specific proteins were then visualized by enhanced chemiluminescence kit (GE Healthcare). Quantification of protein expression was performed using Quantity One Software (Bio-Rad).

Statistical Analysis

Differences in clinical and hormonal variables between PCOS patients and non-hyperandrogenic controls were evaluated by unpaired *t*-test and the results were expressed as means \pm standard deviation

(SD). The equality of the variances was estimated by Levene's test and the results of the *t*-test were interpreted accordingly, setting $\alpha = 0.05$ as the level of statistical significance.

Relative protein quantification across all diseased and control samples was performed using Decyder software, to codetect and quantify the spots on a given gel in terms of the ratios of the Cy3 and Cy5 sample volumes to the standard Cy2 volume, and to match the spots and standardize the ratios across the gels accounting for the observed differences in the Cy2 sample volumes on the gels. This software provides two choices for determining if a protein is differentially expressed between two groups: one based on the fold change that is calculated as the ratio of the average standardized abundances corresponding to the two group of samples, which was set at greater than two-fold threshold; and the second is based on the *P*-value from the *t*-test, setting $\alpha=0.05$ as the level of statistical significance.

Results

Description of the clinical, metabolic and hormonal profiles of patients and controls is shown in Table I. As expected, PCOS patients presented with increased hirsutism score and serum free testosterone and androstenedione levels, and decreased SHBG concentrations. No other statistically significant differences were observed, including clinical variables, lipid profiles, and indexes of insulin resistance.

As a first approach, whole fat samples from obese women were extracted and separated by 2-DE gels using different pH range in the isoelectric focusing, to optimize 2-DE experimental conditions in terms of resolution and focusing capacity. Representative 2-DE separations are shown in Figure 1 for different pH ranges. Using the PDQuest software (Bio-Rad Laboratories) we found that the 4-7 pH range resolved 1100 proteins, whereas the 6-11 and 3-10 pH ranges resolved 500 and 600 proteins, respectively. Therefore, the comparative proteomic analysis of omental adipose tissue was carried out using the pH 4-7 range.

We also tested the reproducibility of 4-7 pH range 2-DE gels comparing the variation within different gels in the same group of individuals; the analysis of 1100 common spots revealed a coefficient

of variation of approximately 40% between same-group gels. It is well known that variability between gels, mostly associated with the experimental procedure utilized, is a serious shortcoming of conventional 2-DE (Alban *et al.*, 2003). To circumvent these inconveniences, 2D-DIGE was employed. This technique enables multiple samples to be analyzed on the same gel, and the inclusion of an internal standard of pooled samples on all gels allows for improved inter-gel alignment of gel features, and relative quantification of spot volumes (Alban *et al.*, 2003). This approach reduced the coefficient of variation to 17.6 %, notably lower than that of conventional methods.

By using 2D-DIGE we analyzed the fat proteome from a group of ten individuals, five PCOS women and five non-PCOS controls. To avoid labeling bias arising from the varying fluorescence properties of gels at different wavelengths, protein extracts were labeled using dye- swapping with either Cy3 or Cy5 fluorescent dyes, so that a given condition can be labeled with both dyes, and then each Cy3/Cy5-labeled sample pair was mixed with a Cy2-labeled internal standard onto each gel. After 2-DE, the Cy2, Cy3 and Cy5 channels were individually imaged from each of the five gels using mutually exclusive excitation and emission wavelengths. Image analysis performed with DeCyder software permitted the detection of approximately 1840 spots per gel. Statistical analyses was performed setting the threshold for differentially expressed proteins at greater than two-fold and $p < 0.05$. The software revealed significant changes in the abundance of 15 proteins spots between PCOS and control samples: ten of them were down-regulated and five spots were up-regulated in PCOS omental adipose tissue with respect to that of non-hyperandrogenic women (Figure 2).

These 15 spots were excised, digested in-gel with trypsin, and analyzed by MALDI-TOF/TOF. Nine proteins could be identified by peptide mass fingerprinting and/or peptide fragmentation fingerprinting followed by database search. Figure 3 shows the position of these nine spots in a selected 2D-DIGE gel and Table II displays detailed information about the corresponding proteins identified. The six remaining spots could not be identified probably due to the low protein amount in the spot, since only trypsin autolysis and keratin background peaks showed in the corresponding MALDI mass spectra. These results were confirmed when the 15 spots showing significant differences between the two conditions

were excised from different gels and subjected to digestion and MALDI-TOF/TOF analysis. As an example, Figure 4 shows the MALDI mass spectra that permitted to identify the protein in spot 5 as peroxiredoxin 2 isoform a upon database searching, including sequence confirmation of the peptide at $m/z = 1863.06$ by MALDI MS/MS fragmentation analysis.

Proteomic analysis revealed altered expression levels of several proteins in PCOS omental adipose tissue in comparison with those of non-hyperandrogenic obese women. The PCOS samples showed up-regulation of glutathione S transferase M3 (GSTM3) that we confirmed by Western blot in 1-dimensional gels. Results validating the overexpression of GSTM3 in PCOS samples are shown in Figure 5. Yet also annexin V was overexpressed in PCOS samples compared with those of non-hyperandrogenic women, whereas albumin, triosephosphate isomerase I (TPI1), peroxiredoxin 2 isoform a, actin beta, adipocyte plasma membrane-associated protein (APMAP) and proapolipoprotein ApoA1 were underexpressed (Table II). These proteins or genes have been identified as expressed in human and/or mouse adipose tissue in previous studies involving fat tissue (Albrektsen *et al.*, 2001; Celis *et al.*, 2005; Corton *et al.*, 2007; Corton *et al.*, 2004; Lanne *et al.*, 2001). Most of these differential proteins are not adipose tissue specific; however, it must be taken into account that in white adipose tissue, the major organ for storage of triacylglycerols in mammals, a great number of proteins expressed are not only involved in lipid metabolism, but also in many other processes such as satiety, bone function and reproduction.

Discussion

Our present proteomic analysis of omental adipose tissue provides further evidence supporting the concept that the participation of visceral adiposity in the pathogenesis of PCOS is not limited to the well-known involvement of insulin resistance, hyperinsulinemia, and facilitation of androgen excess (Gambineri and Pasquali, 2006). On the contrary, the differences we have found in protein expression in the omental fat of morbidly obese women presenting with or without PCOS at the time of bariatric surgery

suggest the participation of several other mechanisms, in agreement with our recent results applying genomic techniques to similar samples (Corton *et al.*, 2007).

The most relevant finding has been the involvement of oxidative stress and toxicity processes in PCOS with the identification of two dysregulated proteins in PCOS adipose tissue, glutathione S transferase M3 (GSTM3) and peroxiredoxin 2 (Prx2). A condition of "oxidative stress" damages components of the cell membranes, proteins or genetic material, by "oxidizing" them. Increased oxidative stress has been suggested to occur in many disease processes including disorders related to insulin resistance as PCOS, due, in part, to the hyperglycemia and free fatty acids that induce an over-production of reactive oxygen species (ROS) (Evans *et al.*, 2002).

In PCOS omental fat the expression level of GSTM3 was increased compared with controls. This protein belongs to the multigene family of the glutathione S-transferases (GSTs), in particular to the Mu class of cytosolic GSTs which catalyze the conjugation of glutathione with compounds containing an electrophilic centre and can also exert peroxidase, isomerase, and thiol transferase functions (Mannervik, 1985). This protein is an antioxidant enzyme involved in the degradation of cytotoxic products in the cell and, among other functions, glutathione S-transferases are implicated in the biosynthesis of leukotrienes, prostaglandins, testosterone and progesterone, and perform a cytoprotective function through detoxification of lipid peroxidation products in adipocytes (Jowsey *et al.*, 2003). GSTs are also involved in diverse signalling pathways related to adipocyte differentiation. For example they contribute to the formation of 15-deoxy- $\Delta^{12,14}$ -prostaglandin J₂ (15d-PGJ₂). An important function of 15d-PGJ₂ is to serve as an activating ligand for the pro-adipogenic transcription factor, peroxisome proliferator-activated receptor γ (PPAR γ) (Jowsey *et al.*, 2003).

Our present proteomic results have validated the overexpression of the GSTM3 gene in PCOS omental fat as previously revealed by two different transcript profiling strategies such as DNA microarrays and quantitative RT-PCR (Corton *et al.*, 2007). This genomic study identified other dysregulated genes involved in depleting and/or generating toxic products such as NQO1, ALDH1A3, PCYOX1, ALOX15 and DNAJB14. Furthermore, the classification of dysregulated genes into gene

ontology (GO) categories revealed a significant overrepresentation of GO terms related to *oxidoreductase activity and toxicity* in PCOS patients compared with non-PCOS controls (Corton *et al.*, 2007).

Peroxiredoxin 2, Prx2, was found to be down-regulated in PCOS omental fat. This protein belongs to a family of antioxidant enzymes that reduce hydrogen peroxide and alkyl hydroperoxides, playing an antioxidant protective role in cells through its peroxidase activity (Chae *et al.*, 1993). Prx2 eliminates endogenous H₂O₂, regulating the levels of H₂O₂, an intracellular signaling molecule that is common to many cytokine-induced signal transduction pathways. The down-regulation of this enzyme could reflect an increase in the concentration of H₂O₂ in PCOS fat cells, damaging the DNA. It has been suggested that DNA damage induced by H₂O₂ might explain the increased endometrial cancer susceptibility in PCOS women (Dinger *et al.*, 2005). In addition, it has been recently reported that Prx2 plays an important role in the regulation of pro-inflammatory responses to lipopolysaccharide when using Prxd2 deficient mice and cells through the involvement of endogenous ROS signalling (Yang *et al.*, 2007). The altered expression of Prx2 protein in PCOS omental fat might contribute to the inflammatory state characteristic of PCOS.

Yet also, peroxiredoxin 2 is encoded by the PRXD2 gene located at 19p13.2, which is a susceptibility region for PCOS (Urbanek *et al.*, 2005), although there is a relatively large distance of 4 megabases between the PRXD2 gene and the D19S884 marker showing linkage with PCOS in previous studies (Urbanek *et al.*, 2005).

Supporting the evidence for altered oxidative stress processes in our genomic and proteomic studies, it has been recently reported that the excessive generation of ROS in response to hyperglycemia is increased in PCOS independently of obesity and that this could contribute to the pro-inflammatory state that induces insulin resistance and hyperandrogenism in women with this disorder (Gonzalez *et al.*, 2006). Women with PCOS have been reported to be more likely to experience oxidative stress than healthy women (Sabuncu *et al.*, 2001). In this study an increased oxidant status was found in women with PCOS, and this was related to central obesity, age, blood pressure, serum glucose, insulin and triglyceride levels, and insulin resistance; moreover, their antioxidant status was found to be insufficient, thus suggesting that oxidative stress might contribute to the increased risk of cardiovascular disease in women with PCOS

(Sabuncu *et al.*, 2001). Furthermore, other studies have also revealed that oxidative stress promotes increased inflammation and induces insulin resistance (Ogihara *et al.*, 2004), and may interfere with the reproductive function (Iborra *et al.*, 2005).

Taken together, these findings reveal the important role played by oxidative stress processes in PCOS, where the balance between ROS and antioxidants is disrupted towards an overabundance of ROS. In PCOS adipocytes the overexpression of GSTM3 might respond to an augment of oxidised cytotoxic products that have to be eliminated by conjugation with glutathione. In severe oxidant status, the content of glutathione is diminished, as well as the cell defences against ROS (Pompella *et al.*, 2003), while the overabundance of ROS contributes to insulin resistance (Rudich *et al.*, 1998; Tirosh *et al.*, 1999) and oxidative stress in a circular process. The underexpression of Prx2 in PCOS adipose tissue contributes to this scenery, because H₂O₂ might not be properly eliminated, therefore augmenting ROS levels in the fat cells.

Furthermore, the increased protein expression of annexin V in adipose tissue might be a compensatory mechanism against the oxidative stress induced by chronic inflammation. Annexin V reduces the activation of Jak2 and Stat1 α in response to interferon- γ by forming a stable complex with the R2 subunit of the human interferon- γ receptor (Leon *et al.*, 2006) and, in concert with other pro-inflammatory cytokines, interferon- γ is the most important trigger for the formation and release of ROS (Schroecksnadel *et al.*, 2006). Yet also, giving its role as a marker of apoptosis, the increased annexin V protein expression in omental adipose tissue may simply reflect the apoptosis of adipocytes and preadipocytes induced by the TNF- α secreted by these cells as a result of the inflammatory process associated with obesity (Prins *et al.*, 1997).

Of note, the chronic inflammatory milieu associated with PCOS (Escobar-Morreale *et al.*, 2005) and with obesity (Fernandez-Real and Ricart, 2003) may also underlie the reduced protein expression of APMAP in PCOS omental tissue. Although the precise biological function of this glycosylated membrane protein is unknown at present, it is considered a marker of adipocyte differentiation that is present mostly in mature adipocytes (Albrektsen *et al.*, 2001). At least partly, the actions of the TNF- α secreted by

adipocytes limit the increase in fat mass characteristic of obesity by inducing adipocyte dedifferentiation, and impairing preadipocyte differentiation (Prins *et al.*, 1997). The decrease in APMAP expression in our PCOS samples might result from such effects of TNF- α , especially considering that administration of tumor necrosis factor alpha reduces APMAP mRNA in adipocytes *in vitro* (Albrektsen *et al.*, 2001).

Proapolipoprotein A-1 also showed a decreased expression in PCOS omental adipose tissue. Apolipoprotein A-1 is the major constituent of high-density lipoprotein (HDL) cholesterol and participates in cholesterol metabolism by extracting free cholesterol from peripheral tissues, exerting a cardio-protective effect by preventing lipid accumulation in arterial walls (Mooradian *et al.*, 2006). Decreased serum HDL-cholesterol levels is the one of the most common abnormalities observed in the lipid profile of PCOS patients (Rajkhowa *et al.*, 1997; Talbott *et al.*, 1995), suggesting an important role in the development of cardiovascular disease in PCOS patients (Yilmaz *et al.*, 2005). Interestingly, it has been estimated that myocardial infarction is seven times more likely in patients with PCOS than in women with normal ovaries (Dahlgren *et al.*, 1992). The treatment with insulin sensitizers (Diamanti-Kandarakis *et al.*, 2000) or antiandrogenic oral contraceptives (Luque-Ramirez *et al.*, 2007) result in an increase in ApoA1 and HDL-cholesterol levels, improving other parameters related with insulin, glucose and lipid metabolism, and diminishing the overall cardiovascular risk associated to PCOS

It is noteworthy that the expression of ApoA1 gene is precisely regulated by various transcription factors at the transcriptional and post-transcriptional level (Mooradian *et al.*, 2006), among them FoxA/HNF-3 and HNF-4 transcription factors. Significant overrepresentation of putative binding sites for these transcription factors was found in groups of coexpressed genes differentially dysregulated in the genomic study performed in PCOS (Cortón *et al.*, 2007), however ApoA1 gene was not revealed as differentially expressed in the transcription profiling study. Despite all these findings it is not known whether underexpression of ApoA1 protein in PCOS is mediated through obesity per se or is independent of body mass index and is thus the result of other metabolic factors.

The involvement of cytoskeleton proteins in the pathogenesis of PCOS previously suggested by our recent genomic study (Cortón *et al.*, 2007) is also supported by the present proteomic findings. Actin

protein content was statistically reduced in PCOS patients with respect to control subjects, and this finding might be related to the insulin resistance of PCOS patients considering that the actin cytoskeleton plays an important role in regulating the insulin-mediated traffic of glucose transporter 4 vesicles to the adipocyte plasma membrane, a process involving also Rho GTPases (Chiang *et al.*, 2001) such as RHOQ that is differentially expressed in PCOS omental fat (Cortón *et al.*, 2007). Actin is not only a cytoskeleton component, but also participates in gene expression regulation. Thus, actin has been recently reported to regulate the expression of c-fos serum response element-binding transcription factor (SRF), a nuclear protein involved in cell cycle regulation, apoptosis, cell growth, and cell differentiation (Vartiainen *et al.*, 2007).

Furthermore, the down-regulation in PCOS adipose tissue of TPI1 might contribute to cytoskeleton dysregulation: TPI1, an enzyme that catalyzes the interconversion of dihydroxyacetone phosphate and glyceraldehydes-3-phosphate, completing the preparatory phase of glycolysis, interacts with Rho in the regulation of intracellular sodium, probably through Na,K-ATPase activation, by providing glycolytic ATP that fuels energy for membrane functions (Jung *et al.*, 2002). Also, TPI1 is associated to the plasma membrane and binds indirectly to structural proteins such as actin and microtubules (Jung *et al.*, 2002). Therefore, downregulation of TPI1 might interfere with several functions of adipose tissue cells. On the contrary, we have no reasonable explanation for the reduced albumin content of the omental samples from PCOS patients when compared to that of controls.

Although our present results may provide the basis for a better understanding of the role that visceral adiposity plays in the pathogenesis of the PCOS associated with morbid obesity, we must also acknowledge certain limitations of our experimental design. First, we have used whole adipose tissue biopsies and, therefore, the differences in protein expression found here do not result only from those present in adipocytes but also from other cell types including inflammatory cells and blood vessels. However, this approach has probably permitted the detection of differences pertaining to inflammatory processes that result from the secretion of cytokines and other molecules by immune cells within the stroma of visceral fat. Second, the small number of samples used in this study is an important shortcoming

that reduces the statistical power of the analysis. We chose to analyze a small number of subjects in order to keep homogeneity in terms of obesity-related phenotypes such as type 2 diabetes, dyslipidemia, and cardiovascular disease. Third, the present results were obtained in women with morbid obesity, and must not be extrapolated to women presenting with milder grades of obesity. It must be noted that 2-DE presents some limitations such as poor representation of low-abundant, extreme pI and molecular weight and very hydrophobic proteins, and therefore some differentially expressed proteins involved in the pathogenesis of the disorder might be missed (e.g. regulatory proteins). In addition, our study focused on the pH 4-7 range, obviating regulated proteins with a more alkaline or acidic isoelectric point.

In summary, our present proteomic approach reveals differences between PCOS patients and non-hyperandrogenic women in the expression of several proteins that are involved in lipid and glucose metabolism, inflammation, and oxidative stress processes. This work constitutes one of the few proteomic studies reported in PCOS, as well as the first analysis of human visceral adipose tissue. It is noteworthy that the present proteomic results complement those of the genomic studies previously reported by our group, and therefore may contribute to explain the role of abdominal adiposity in the pathogenesis of PCOS. Further characterization of the genes and proteins differentially expressed in the omental fat of morbidly obese PCOS patients might contribute to a better understanding of the pathophysiology of this common disorder.

Acknowledgments

This study was supported by Grants PI020578, PI020741, PI050341, PI050551, RCMN C03/08, RGDM 03/212 and REDIMET RD06/0015/0007 from Fondo de Investigación Sanitaria, Instituto de Salud Carlos III, Spanish Ministry of Health and Consumer Affairs, and Grants 08.6/0021/2003 and GR/SAL/0137/2004 from the Consejería de Educación y Cultura, Comunidad de Madrid, Spain. CNIC is supported by the Spanish Ministry of Health and Consumer Affairs and the Pro-CNIC Foundation.

References

- Alban A, David SO, Bjorkesten L, Andersson C, Sloge E, Lewis S, Currie I (2003) A novel experimental design for comparative two-dimensional gel analysis: Two-dimensional difference gel electrophoresis incorporating a pooled internal standard. *Proteomics* 3,36-44.
- Albrektsen T, Richter HE, Clausen JT, Fleckner J (2001) Identification of a novel integral plasma membrane protein induced during adipocyte differentiation. *Biochem J* 359,393-402.
- Alvarez-Blasco F, Botella-Carretero JI, San Millan JL, Escobar-Morreale HF (2006) Prevalence and characteristics of the polycystic ovary syndrome in overweight and obese women. *Archives of internal medicine* 166,2081-2086.
- Asunción M, Calvo RM, San Millán JL, Sancho J, Avila S, Escobar-Morreale HF (2000) A prospective study of the prevalence of the polycystic ovary syndrome in unselected Caucasian women from Spain. *J Clin Endocrinol Metab* 85,2434-2438.
- Azziz R, Carmina E, Dewailly D, Diamanti-Kandarakis E, Escobar-Morreale HF, Futterweit W, Janssen OE, Legro RS, Norman RJ, Taylor AE, et al. (2006) Position statement: criteria for defining polycystic ovary syndrome as a predominantly hyperandrogenic syndrome: an Androgen Excess Society guideline. *J Clin Endocrinol Metab* 91,4237-4245.
- Azziz R, Woods KS, Reyna R, Key TJ, Knochenhauer ES, Yildiz BO (2004) The prevalence and features of the polycystic ovary syndrome in an unselected population. *J Clin Endocrinol Metab* 89,2745-2749.
- Carmina E, Bucchieri S, Esposito A, Del Puente A, Mansueto P, Orio F, Di Fede G, Rini G (2007) Abdominal fat quantity and distribution in women with polycystic ovary syndrome and extent of its relation to insulin resistance. *J Clin Endocrinol Metab* 92,2500-2505.
- Celis JE, Moreira JM, Cabezon T, Gromov P, Friis E, Rank F, Gromova I (2005) Identification of extracellular and intracellular signaling components of the mammary adipose tissue and its interstitial fluid in high risk breast cancer patients: toward dissecting the molecular circuitry of epithelial-adipocyte stromal cell interactions. *Mol Cell Proteomics* 4,492-522.
- Chae HZ, Kim IH, Kim K, Rhee SG (1993) Cloning, sequencing, and mutation of thiol-specific antioxidant gene of *Saccharomyces cerevisiae*. *J Biol Chem* 268,16815-16821.
- Chiang SH, Baumann CA, Kanzaki M, Thurmond DC, Watson RT, Neudauer CL, Macara IG, Pessin JE, Saltiel AR (2001) Insulin-stimulated GLUT4 translocation requires the CAP-dependent activation of TC10. *Nature* 410,944-948.

- Cortón M, Botella-Carretero JI, Benguria A, Villuendas G, Zaballos A, San Millán JL, Escobar-Morreale HF, Peral B (2007) Differential gene expression profile in omental adipose tissue in women with polycystic ovary syndrome. *J Clin Endocrinol Metab* 92,328-337.
- Cortón M, Villuendas G, Botella JI, San Millán JL, Escobar-Morreale HF, Peral B (2004) Improved resolution of the human adipose tissue proteome at alkaline and wide range pH by the addition of hydroxyethyl disulfide. *Proteomics* 4,438-441.
- Dahlgren E, Janson PO, Johansson S, Lapidus L, Oden A (1992) Polycystic ovary syndrome and risk for myocardial infarction. Evaluated from a risk factor model based on a prospective population study of women. *Acta Obstet Gynecol Scand* 71,599-604.
- Diamanti-Kandarakis E and Christakou C (2006) Prevalence, definition and clinical manifestations of polycystic ovary syndrome. *Endocrinol Nutr* 53(Suppl 1),25-33.
- Diamanti-Kandarakis E, Kouli C, Tsianateli T, Bergiele A (2000) Metformin and polycystic ovary syndrome. *Clin Endocrinol (Oxf)* 52,243-246.
- Dinger Y, Akcay T, Erdem T, Ilker Saygili E, Gundogdu S (2005) DNA damage, DNA susceptibility to oxidation and glutathione level in women with polycystic ovary syndrome. *Scand J Clin Lab Invest* 65,721-728.
- Duncan MW and Hunsucker SW (2005) Proteomics as a tool for clinically relevant biomarker discovery and validation. *Exp Biol Med (Maywood)* 230,808-817.
- Escobar-Morreale HF, Botella-Carretero JI, Alvarez-Blasco F, Sancho J, San Millán JL (2005a) The polycystic ovary syndrome associated with morbid obesity may resolve after weight loss induced by bariatric surgery. *J Clin Endocrinol Metab* 90,6364-6369.
- Escobar-Morreale HF, Luque-Ramirez M, San Millán JL (2005b) The molecular-genetic basis of functional hyperandrogenism and the polycystic ovary syndrome. *Endocr Rev* 26,251-282.
- Escobar-Morreale HF and Millán JL (2007) Abdominal adiposity and the polycystic ovary syndrome. *Trends Endocrinol Metab* 18,266-272.
- Evans JL, Goldfine ID, Maddux BA, Grodsky GM (2002) Oxidative stress and stress-activated signaling pathways: a unifying hypothesis of type 2 diabetes. *Endocr Rev* 23,599-622.
- Fernandez-Real JM and Ricart W (2003) Insulin resistance and chronic cardiovascular inflammatory syndrome. *Endocr Rev* 24,278-301.
- Gambineri A and Pasquali R (2006) Insulin resistance, obesity and metabolic syndrome in polycystic ovary syndrome. *Endocrinol Nutr* 53(Suppl 1),49-55.
- Gonzalez F, Rote NS, Minium J, Kirwan JP (2006) Reactive oxygen species-induced oxidative stress in the development of insulin resistance and hyperandrogenism in polycystic ovary syndrome. *J Clin Endocrinol Metab* 91,336-340.
- Hatch R, Rosenfield RL, Kim MH, Tredway D (1981) Hirsutism: implications, etiology, and management. *Am J Obstet Gynecol* 140,815-830.

- Iborra A, Palacio JR, Martinez P (2005) Oxidative stress and autoimmune response in the infertile woman. *Chem Immunol Allergy* 88,150-162.
- Jowsey IR, Smith SA, Hayes JD (2003) Expression of the murine glutathione S-transferase alpha3 (GSTA3) subunit is markedly induced during adipocyte differentiation: activation of the GSTA3 gene promoter by the pro-adipogenic eicosanoid 15-deoxy-Delta12,14-prostaglandin J2. *Biochem Biophys Res Commun* 312,1226-1235.
- Jung J, Yoon T, Choi EC, Lee K (2002) Interaction of cofilin with triose-phosphate isomerase contributes glycolytic fuel for Na,K-ATPase via Rho-mediated signaling pathway. *J Biol Chem* 277,48931-48937.
- Lanne B, Potthast F, Hoglund A, Brockenhuus von Lowenhielm H, Nystrom AC, Nilsson F, Dahllof B (2001) Thiourea enhances mapping of the proteome from murine white adipose tissue. *Proteomics* 1,819-828.
- Leon C, Nandan D, Lopez M, Moeenrezakhanlou A, Reiner NE (2006) Annexin V associates with the IFN-gamma receptor and regulates IFN-gamma signaling. *J Immunol* 176,5934-5942.
- Luque-Ramirez M, Alvarez-Blasco F, Botella-Carretero JI, Martinez-Bermejo E, Lasuncion MA, Escobar-Morreale HF (2007) Comparison of ethinyl-estradiol plus cyproterone acetate versus metformin effects on classic metabolic cardiovascular risk factors in women with the polycystic ovary syndrome. *J Clin Endocrinol Metab* 92,2453-2461.
- Ma X, Fan L, Meng Y, Hou Z, Mao YD, Wang W, Ding W, Liu JY (2007) Proteomic analysis of human ovaries from normal and polycystic ovarian syndrome. *Mol Hum Reprod* 13,527-535.
- Mannervik B (1985) Glutathione peroxidase. *Methods Enzymol* 113,490-495.
- Matharoo-Ball B, Hughes C, Lancashire L, Tooth D, Ball G, Creaser C, Elgasim M, Rees R, Layfield R, Atiomo W (2007) Characterization of Biomarkers in Polycystic Ovary Syndrome (PCOS) Using Multiple Distinct Proteomic Platforms. *J Proteome Res* 6,3321-3328.
- Mooradian AD, Haas MJ, Wong NC (2006) The effect of select nutrients on serum high-density lipoprotein cholesterol and apolipoprotein A-I levels. *Endocr Rev* 27,2-16.
- National Institutes of Health Consensus Development Panel (1991) Gastrointestinal surgery for severe obesity. *Ann Intern Med* 115,956-961.
- Nelson VL, Qin KN, Rosenfield RL, Wood JR, Penning TM, Legro RS, Strauss III JF, McAllister JN (2001) The biochemical basis for increased testosterone production in theca cells propagated from patients with polycystic ovary syndrome. *J Clin Endocrinol Metab* 86,5925-5933.
- Ogihara T, Asano T, Katagiri H, Sakoda H, Anai M, Shojima N, Ono H, Fujishiro M, Kushiyama A, Fukushima Y, et al. (2004) Oxidative stress induces insulin resistance

- by activating the nuclear factor-kappa B pathway and disrupting normal subcellular distribution of phosphatidylinositol 3-kinase. *Diabetologia* 47,794-805.
- Perkins DN, Pappin DJ, Creasy DM, Cottrell JS (1999) Probability-based protein identification by searching sequence databases using mass spectrometry data. *Electrophoresis* 20,3551-3567.
- Pompella A, Visvikis A, Paolicchi A, De Tata V, Casini AF (2003) The changing faces of glutathione, a cellular protagonist. *Biochem Pharmacol* 66,1499-1503.
- Prins JB, Niesler CU, Winterford CM, Bright NA, Siddle K, O'Rahilly S, Walker NI, Cameron DP (1997) Tumor necrosis factor-alpha induces apoptosis of human adipose cells. *Diabetes* 46,1939-1944.
- Rajkhowa M, Neary RH, Kumpatla P, Game FL, Jones PW, Obhrai MS, Clayton RN (1997) Altered composition of high density lipoproteins in women with the polycystic ovary syndrome. *J Clin Endocrinol Metab* 82,3389-3394.
- Rosenbaum M, Leibel RL, Hirsch J (1997) Obesity. *N Engl J Med* 337,396-407.
- Rudich A, Tirosh A, Potashnik R, Hemi R, Kanety H, Bashan N (1998) Prolonged oxidative stress impairs insulin-induced GLUT4 translocation in 3T3-L1 adipocytes. *Diabetes* 47,1562-1569.
- Sabuncu T, Vural H, Harma M, Harma M (2001) Oxidative stress in polycystic ovary syndrome and its contribution to the risk of cardiovascular disease. *Clin Biochem* 34,407-413.
- Schroecksnadel K, Frick B, Winkler C, Fuchs D (2006) Crucial role of interferon- and stimulated macrophages in cardiovascular disease. *Current Vascular Pharmacology* 4,205-213.
- Shevchenko A, Wilm M, Vorm O, Mann M (1996) Mass spectrometric sequencing of proteins silver-stained polyacrylamide gels. *Anal Chem* 68,850-858.
- Suckau D, Resemann A, Schuerenberg M, Hufnagel P, Franzen J, Holle A (2003) A novel MALDI LIFT-TOF/TOF mass spectrometer for proteomics. *Anal Bioanal Chem* 376,952-965.
- Talbott E, Guzick D, Clerici A, Berga S, Detre K, Weimer K, Kuller L (1995) Coronary heart disease risk factors in women with polycystic ovary syndrome. *Arterioscler Thromb Vasc Biol* 15,821-826.
- Tirosh A, Potashnik R, Bashan N, Rudich A (1999) Oxidative stress disrupts insulin-induced cellular redistribution of insulin receptor substrate-1 and phosphatidylinositol 3-kinase in 3T3-L1 adipocytes. A putative cellular mechanism for impaired protein kinase B activation and GLUT4 translocation. *J Biol Chem* 274,10595-10602.
- Urbanek M, Woodroffe A, Ewens KG, Diamanti-Kandarakis E, Legro RS, Strauss JF, 3rd, Dunaif A, Spielman RS (2005) Candidate gene region for polycystic ovary syndrome (PCOS) on chromosome 19p13.2. *J Clin Endocrinol Metab*.

- Vartiainen MK, Guettler S, Larijani B, Treisman R (2007) Nuclear actin regulates dynamic subcellular localization and activity of the SRF cofactor MAL. *Science* 316,1749-1752.
- Xita N and Tsatsoulis A (2006) Review: Fetal programming of polycystic ovary syndrome by androgen excess: evidence from experimental, clinical, and genetic association studies. *J Clin Endocrinol Metab* 91,1660-1666.
- Yang CS, Lee DS, Song CH, An SJ, Li S, Kim JM, Kim CS, Yoo DG, Jeon BH, Yang HY, et al. (2007) Roles of peroxiredoxin II in the regulation of proinflammatory responses to LPS and protection against endotoxin-induced lethal shock. *J Exp Med* 204,583-594.
- Yilmaz M, Biri A, Bukan N, Karakoc A, Sancak B, Toruner F, Pasaoglu H (2005) Levels of lipoprotein and homocysteine in non-obese and obese patients with polycystic ovary syndrome. *Gynecol Endocrinol* 20,258-263.
- Zawadzki JK and Dunaif A (1992) Diagnostic criteria for polycystic ovary syndrome: Towards a rational approach. In Dunaif A, Givens JR, Haseltine FP, Merriam GR (eds) *Polycystic ovary syndrome*. Blackwell Scientific Publications, Boston, pp.377-384.
- Zhao S, Qiao J, Li M, Zhang X, Yu J, Li R (2007) Discovery of distinct protein profiles for polycystic ovary syndrome with and without insulin resistance by surface-enhanced laser adsorption/ionization time of flight mass spectrometry. *Fertil Steril* 88,145-151.
- Zhao SY, Qiao J, Li MZ (2005) [Protein expression profilings of polycystic ovary syndrome]. *Beijing Da Xue Xue Bao* 37,362-365.

Table I Clinical and biochemical characteristics of the PCOS patients and non-hyperandrogenic controls from whom the omental biopsies used for different techniques were obtained.

	Controls (n=9)	PCOS (n=10)	P value
Waist to hip ratio	0.83 ± 0.11	0.82 ± 0.07	0.824
Hirsutism score	1.3 ± 1.5	7.8 ± 6.2	0.010
Systolic blood pressure (mmHg)	134.4 ± 12.9	124.6 ± 13.3	0.136
Diastolic blood pressure (mmHg)	74.4 ± 7.8	71.8 ± 12.4	0.617
Mean blood pressure (mmHg)	94.4 ± 8.2	89.4 ± 11.6	0.320
Total cholesterol (mg/dL)	178.0 ± 30.9	174.8 ± 33.1	0.834
HDL – cholesterol (mg/dL)	43.9 ± 9.5	37.0 ± 8.7	0.128
LDL – cholesterol (mg/dL)	104.8 ± 23.0	113.1 ± 24.9	0.471
Triglycerides (mg/dL)	129.0 ± 85.0	132.1 ± 40.8	0.922
Total testosterone (ng/dL)	45.7 ± 18.4	61.3 ± 32.6	0.212
Free testosterone (ng/dL)	0.84 ± 0.33	1.36 ± 0.65	0.043
SHBG (µg/dL)	299 ± 90	196 ± 110	0.042
Dehydroepiandrosterone-sulfate (ng/mL)	1025 ± 546	1864 ± 1030	0.058
17-hydroxyprogesterone (ng/mL)	0.86 ± 0.61	0.69 ± 0.41	0.486
Androstendione (ng/mL)	2.1 ± 0.4	3.4 ± 1.6	0.030
Fasting glucose (mg/dL)	97.4 ± 24.9	92.3 ± 9.1	0.549
Fasting insulin (µU/mL)	18.7 ± 16.7	24.9 ± 13.0	0.378
Glucose / insulin ratio	0.06 ± 0.03	0.04 ± 0.02	0.071

Data are means ± SD.

HDL: high-density lipoprotein, LDL: low-density lipoprotein. To convert to SI units, multiply, cholesterol by 0.0259 (result in mmol/L), triglycerides by 0.0113 (result in mmol/L), total testosterone by 0.03467 (result in nmol/L), free testosterone by 34.67 (result in pmol/L), SHBG by 0.111 (result in nmol/L), dehydroepiandrosterone-sulfate by 0.002714 (result in µmol/L), 17-hydroxyprogesterone by 3.026 (result in nmol/L), androstenedione by 3.49 (result in nmol/L), glucose by 0.0555 (result by mmol/L) and insulin by 6.945 (result in pmol/L).

Table II. Proteins identified by MALDI-TOF/TOF exhibiting significant changes in PCOS patients as compared with non-hyperandrogenic women.

Spot No. ^a	Fold change ^b	P value ^c	Protein name	Accession No. ^d	MW/pI ^e	Mascot Score ^f	Coverage ^g	Matched peptides ^h	Biological Function
1	2.71	0.046	Annexin V	gi 999937	36/4.7	161	29	10	Phospholipid binding
2	2.43	0.00004	Glutathione S-transferase M3 (GSTM3)	gi 14250650	27/5.4	177	37	9	Glutathione metabolism
3	-4.39	0.048	Albumin	gi 27692693	49/6	119	21	8	Transport
4	-4.01	0.025	Triosephosphate isomerase ⁱ	gi 17389815	27/6.5	194	28	6	Glucose metabolism
5	-3.12	0.037	Peroxiredoxin 2 isoform a ^j	gi 32189392	22/5.7	170	38	5	Antioxidant activity
6	-2.58	0.048	Actin, beta	gi 15277503	40/5.8	109	19	6	Cytoskeleton
7	-2.56	0.0081	Adipocyte plasma membrane-associated protein (APMAP)	gi 24308201	48/5.8	359	38	17	Adipocyte differentiation
8	-2.26	0.0025	Albumin	gi 27692693	49/6	100	15	6	Transport
9	-2.13	0.025	Proapolipoprotein ApoA1	gi 178775	29/5.3	287	63	18	Cholesterol transport

^a Spot number in 2-DE gel in Figure 3A. ^b Average volume ratio (PCOS vs control). ^c Student t-test *P*-value. ^d Protein accession number from NCBI database. ^e Theoretical molecular weight in kDa and theoretical pI. ^f Protein candidate score as provided by Mascot. ^g Protein sequence coverage in percentage. ^h Number of matched peptides. ⁱ Identification was confirmed by MS/MS analysis of DCGATWVVLGHSEK peptide with a Mascot score of 96. ^j Identification was confirmed by MS/MS analysis of KEGGLGPLNIPLADVTR peptide with a Mascot score of 162.

Figure Legends

Figure 1 Protein pattern from human omental adipose tissue focused in three pH ranges.

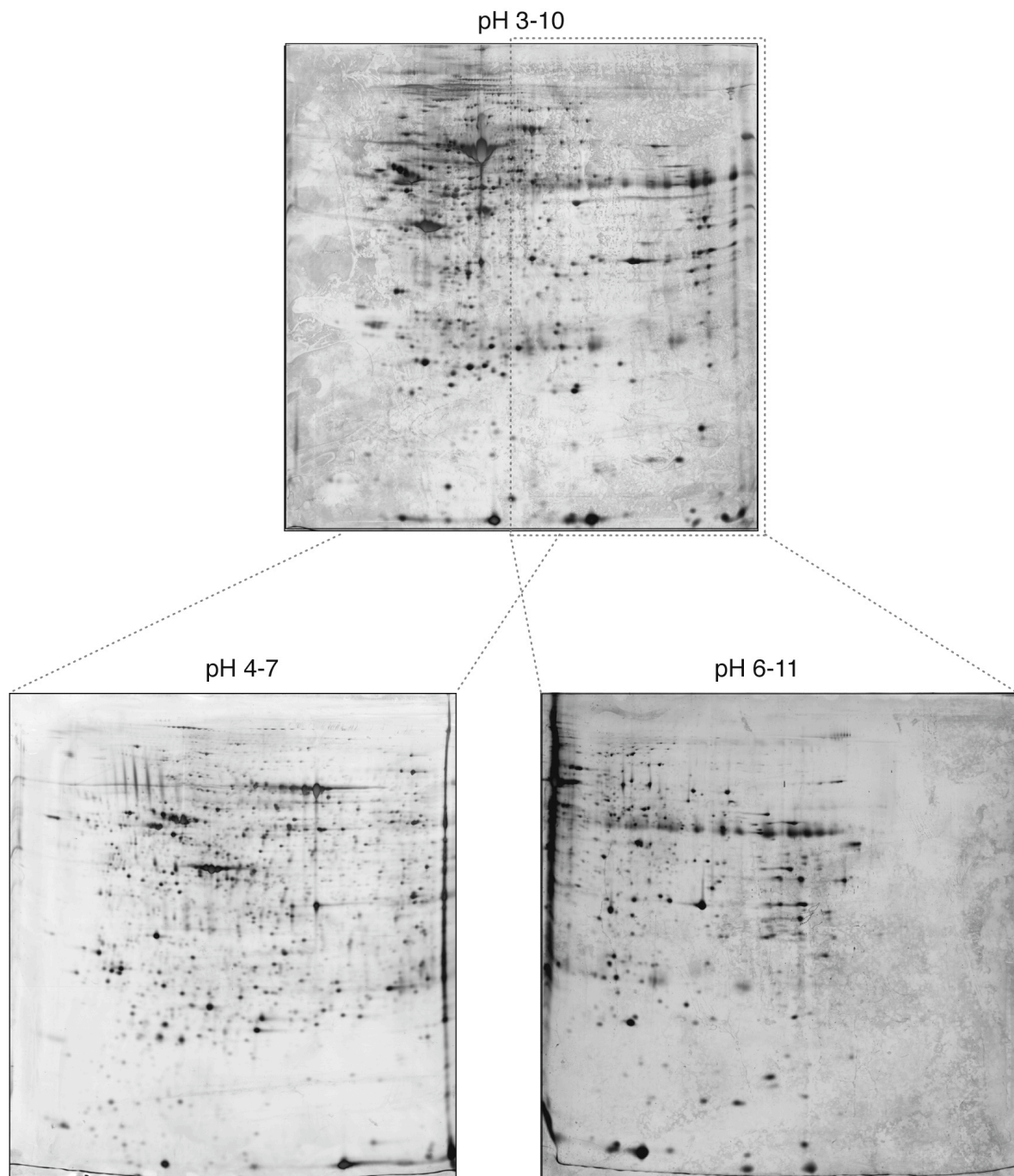


Figure 2 Relative intensity between the PCOS patients and control samples of the 15 spots showing significant differences in 2D-DIGE. Ten of these were down-regulated and five were up-regulated in the PCOS group as compared with control samples. Spots number 1 to 9 are the same as the spots represented in Figure 3A, whereas spots 10 to 15 could not be further identified by Mass Spectrometry. Data are expressed as means \pm SD.

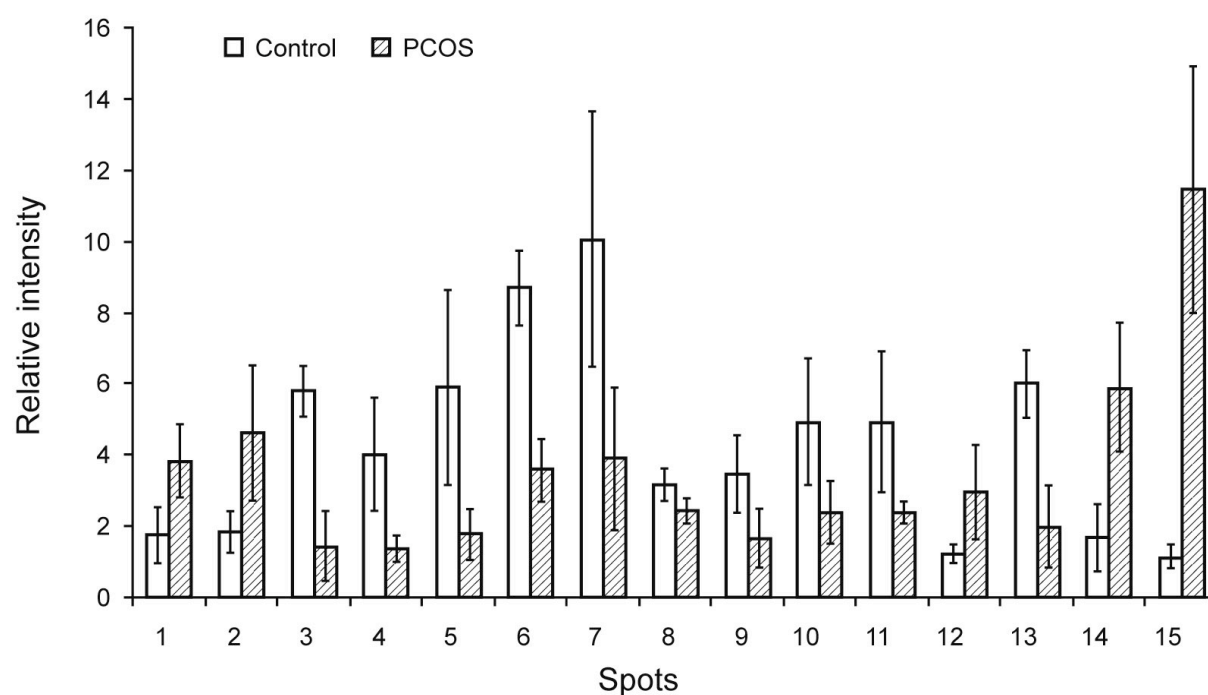


Figure 3 Two-dimensional difference gel electrophoresis (DIGE) of fat proteome. (A) Spot map corresponding to the mixed internal standard, which is common to all the gels analyzed. pH 4-7 immobilized pH gradient strips were used for isoelectric focusing and 12% SDS-PAGE for the second dimension. Numbered spots indicate proteins identified by MALDI-TOF/TOF that showed significant differential expression between PCOS and non-PCOS samples and correlate with those in Table II. (B) Graphical representation of differential protein expression for two selected spots as revealed by the Decyder software.

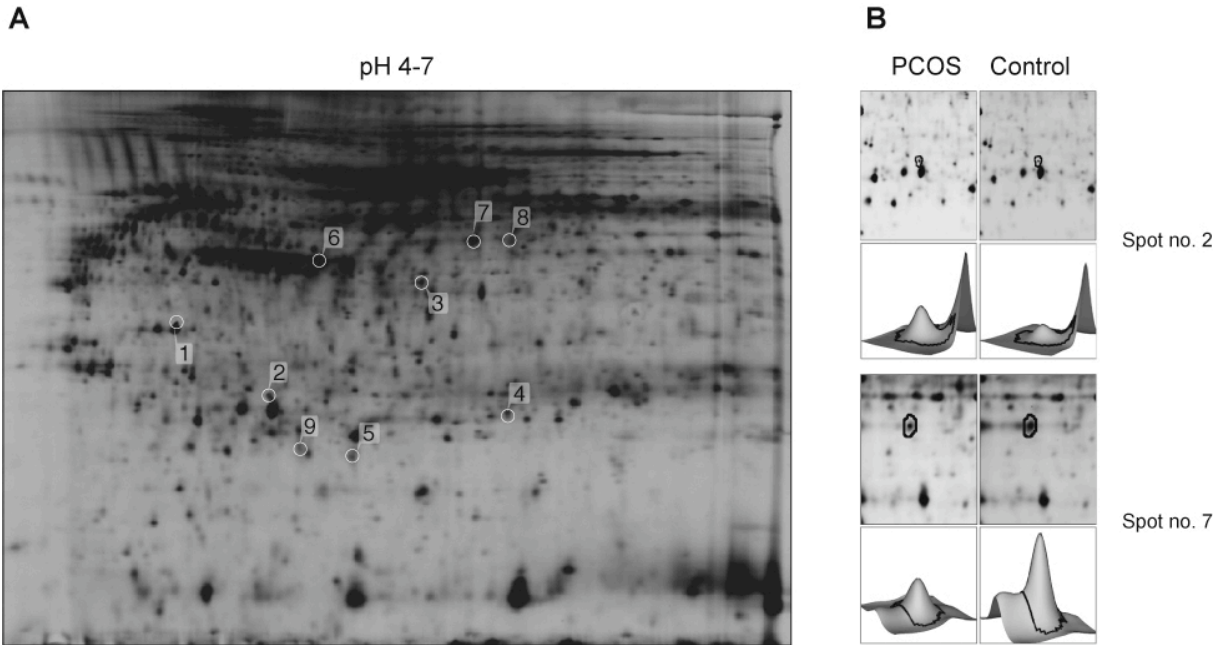


Figure 4 MALDI peptide mass fingerprinting spectra. **(A)** MALDI peptide mass fingerprinting spectrum from spot 5 is shown. Relevant mass signals employed for database searching have been labelled, and known trypsin and keratin peptide signals have been marked with a black dot. The precursor ion selected for subsequent MS/MS measurement is indicated by an arrow. **(B)** MALDI peptide fragmentation fingerprinting spectrum from the above precursor ion at $m/z = 1863.06$. Ions ascribed to the main fragmentation series, y (C-terminal series) and b (N-terminal series), employed for database searching, have been labeled, and the sequence matched is displayed. C-terminal fragment ions corresponding to the loss of ammonia (-17 amu) are indicated by an asterisk, and identified internal fragments are labeled with their amino acid sequence.

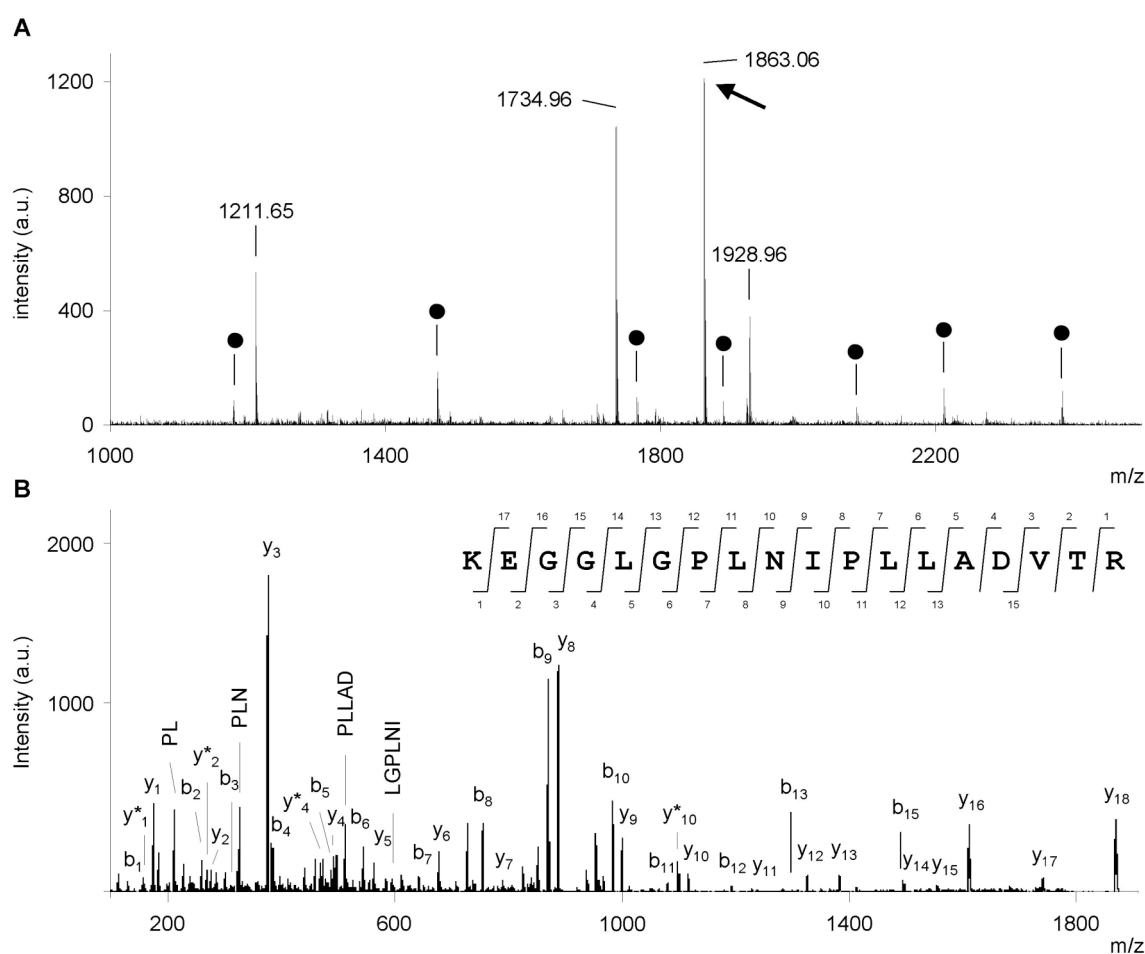


Figure 5 Western blot analysis for GSTM3 protein. (A) Results obtained using protein extracts from five PCOS omental biopsies and seven control samples. (B) Graphical representation of the average relative intensity values for control and patient samples. The median expression in each group is indicated by a horizontal line and the *P* value obtained from Mann–Whitney analysis is indicated.

