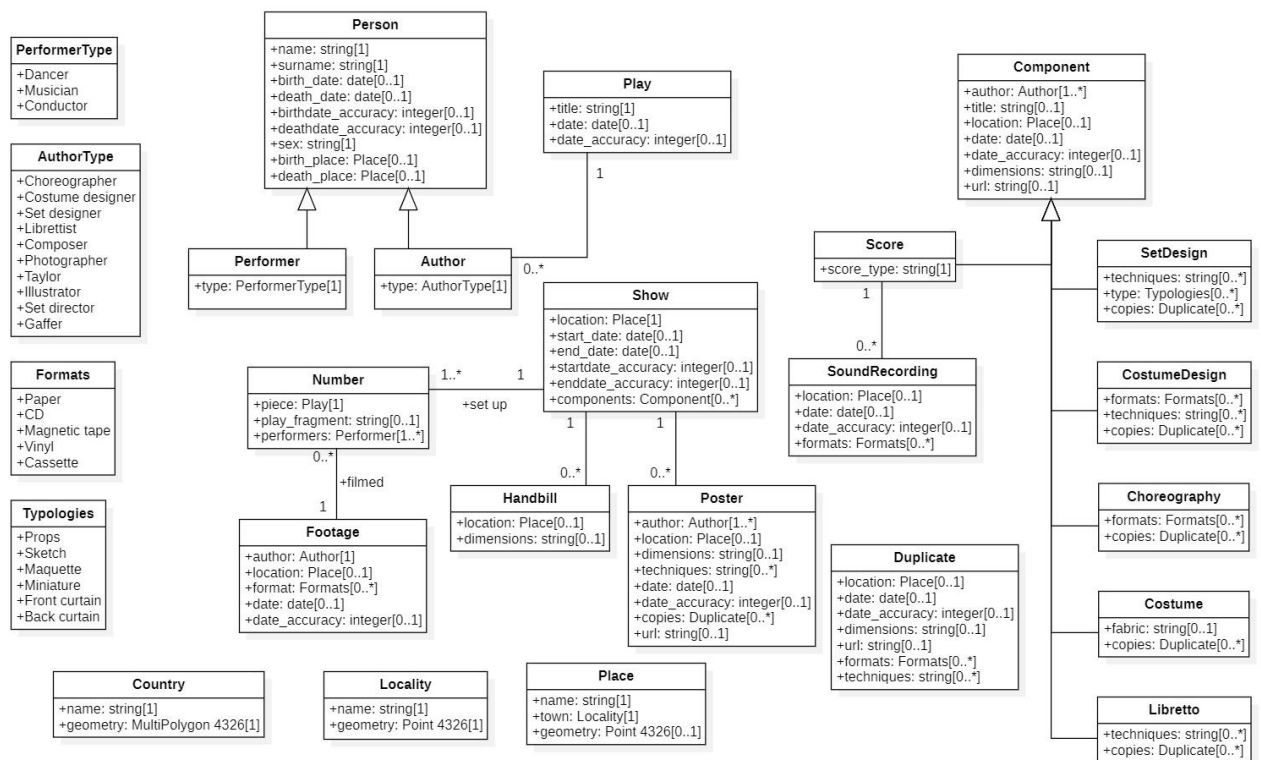


Antonia Mercé, la Argentina and the Ballets Espagnols

Properties

Name	Value
name	Antonia Mercé, la Argentina and the Ballets Espagnols
author	Carlos Fernández Freire, Blanca Gómez Cifuentes, Idoia Murga Castro, Isabel del Bosque González
company	Centro de Ciencias Humanas y Sociales, CSIC
copyright	
version	1



Person

The data model acknowledges two types of persons: Authors and performers. Basic biodata on both is registered, plus their specialty.

Specialized Elements

Author
Performer

Attributes

Visibility	Name	Type	Description
public	name	string	
public	surname	string	
public	birth_date	date	
public	death_date	date	
public	birthdate_accuracy	integer	
public	deathdate_accuracy	integer	
public	sex	string	
public	birth_place	Place	
public	death_place	Place	

Relationships

(Author→Person)
(Performer→Person)

Performer

Generalized Elements

Person

Attributes

Visibility	Name	Type	Description
------------	------	------	-------------

public	type	PerformerType
--------	------	---------------

Relationships

(Performer→Person)

Author

Generalized Elements

Person

Attributes

Visibility	Name	Type	Description
public	type	AuthorType	

Relationships

(Author→Person)

Play

Information regarding the original play: title, authors, date

Attributes

Visibility	Name	Type	Description
public	title	string	
public	date	date	
public	date_accuracy	integer	

Show

Main class of the model: a show that takes place in a specific location and on specific dates

Attributes

Visibility	Name	Type	Description
public	location	Place	
public	start_date	date	
public	end_date	date	
public	startdate_accuracy	integer	
public	enddate_accuracy	integer	
public	components	Component	

Relationships

set up (Show—Number)

Handbill

Physical description and current location of handbills given at the show attendants, where musical numbers and interpreters are displayed.

Attributes

Visibility	Name	Type	Description
public	location	Place	
public	dimensions	string	

Poster

Attributes

Visibility	Name	Type	Description
public	author	Author	
public	location	Place	
public	dimensions	string	
public	techniques	string	
public	date	date	
public	date_accuracy	integer	

public	copies	Duplicate
public	url	string

Number

A show is set up of musical numbers in which a fragment of a play is performed by a series of performers (dancers, musicians and conductor).

Attributes

Visibility	Name	Type	Description
public	piece	Play	
public	play_fragment	string	
public	performers	Performer	

Relationships

set up (Show—Number)
(Number—Footage)

Footage

Musical numbers may have been filmed by an author, and that footage may be kept somewhere.

Attributes

Visibility	Name	Type	Description
public	author	Author	
public	location	Place	
public	format	Formats	
public	date	date	
public	date_accuracy	integer	

Relationships

(Number—Footage)

Component

Description of every piece of information related to the show's development. Subclasses for different types of components. Two aspects of the components of each show should be highlighted: it is possible to specify where they are currently located (for example, in a museum or collection) and the existence of copies.

Specialized Elements

SetDesign
Score
CostumeDesign
Choreography
Costume
Libretto

Attributes

Visibility	Name	Type	Description
public	author	Author	
public	title	string	
public	location	Place	
public	date	date	
public	date_accuracy	integer	
public	dimensions	string	
public	url	string	

Relationships

(SetDesign→Component)
(Score→Component)
(CostumeDesign→Component)
(Choreography→Component)
(Costume→Component)
(Libretto→Component)

SetDesign

Generalized Elements

Component

Attributes

Visibility	Name	Type	Description
public	techniques	string	
public	type	Typologies	
public	copies	Duplicate	

Relationships

(SetDesign→Component)

CostumeDesign

Generalized Elements

Component

Attributes

Visibility	Name	Type	Description
public	formats	Formats	
public	techniques	string	
public	copies	Duplicate	

Relationships

(CostumeDesign→Component)

Choreography

Generalized Elements

Component

Attributes

Visibility	Name	Type	Description
public	formats	Formats	

public	copies	Duplicate
--------	--------	-----------

public	Attribute1	none
--------	------------	------

Relationships

(Choreography→Component)

Costume

Generalized Elements

Component

Attributes

Visibility	Name	Type	Description
public	fabric	string	

public	copies	Duplicate	
--------	--------	-----------	--

Relationships

(Costume→Component)

Libretto

Generalized Elements

Component

Attributes

Visibility	Name	Type	Description
public	techniques	string	

public	copies	Duplicate	
--------	--------	-----------	--

Relationships

(Libretto→Component)

Score

Generalized Elements

Component

Attributes

Visibility	Name	Type	Description
public	score_type	string	

Relationships

(Score→Component)

(SoundRecording—Score)

SoundRecording

Attributes

Visibility	Name	Type	Description
public	location	Place	
public	date	date	
public	date_accuracy	integer	
public	formats	Formats	

Relationships

(SoundRecording—Score)

Duplicate

Attributes

Visibility	Name	Type	Description
public	location	Place	
public	date	date	

public	date_accuracy	integer
public	dimensions	string
public	url	string
public	formats	Formats
public	techniques	string

Country

Attributes

Visibility	Name	Type	Description
public	name	string	
public	geometry	MultiPolygon	4326

Locality

Attributes

Visibility	Name	Type	Description
public	name	string	
public	geometry	Point	4326

Place

Any kind of place with a spatial reference: theatres, museums, etc.

Attributes

Visibility	Name	Type	Description
public	name	string	
public	town	Locality	
public	geometry	Point	4326