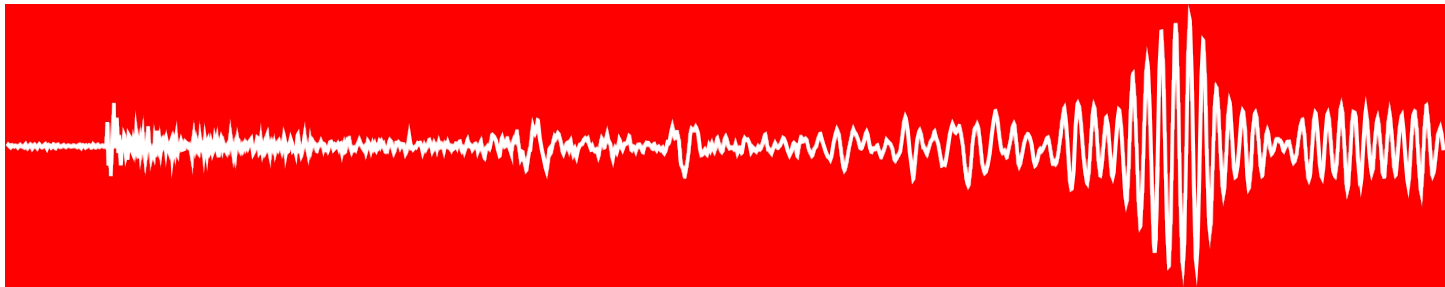
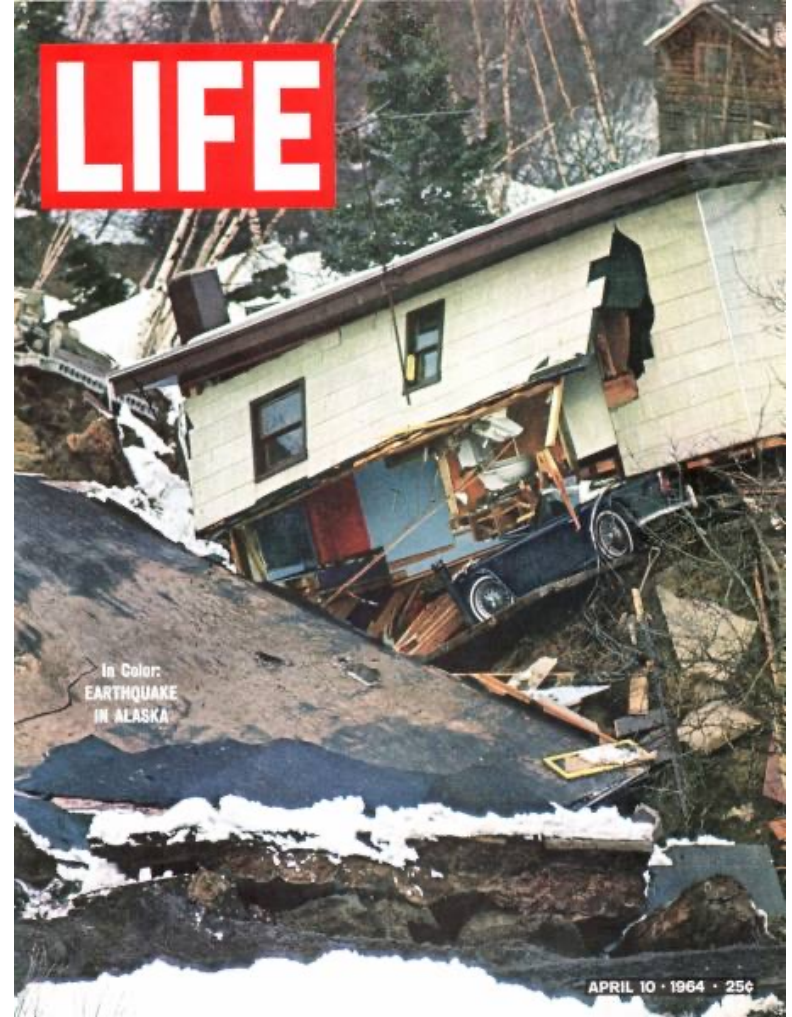


Parlem de terratrèmols

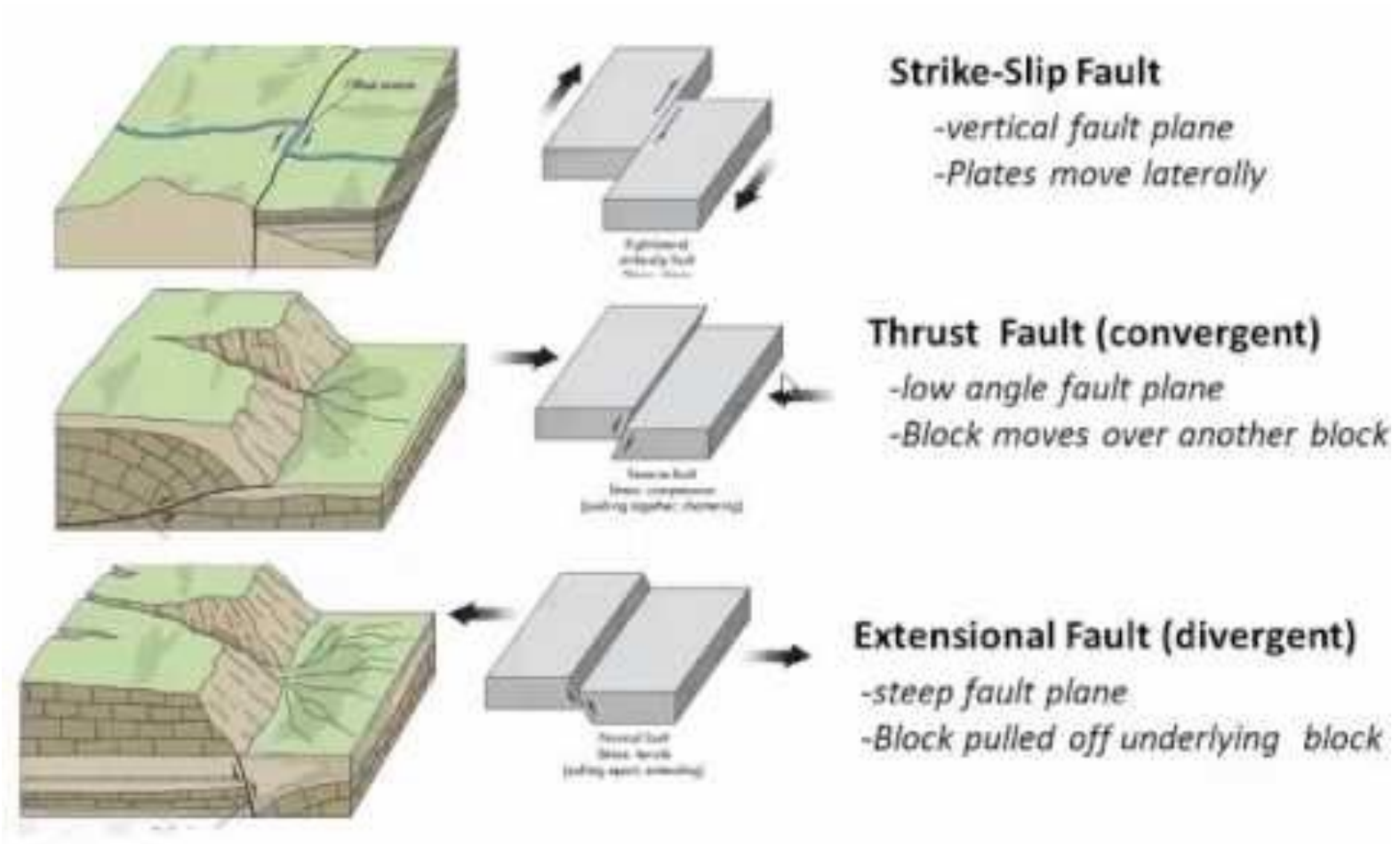


Jordi Díaz Cusí

Geociències Barcelona, CSIC
Consell Superior d'Investigacions Científiques



- Els terratrèmols són moviments bruscs de la terra originats a l'alliberar-se sobtadament l'energia acumulada durant llargs períodes

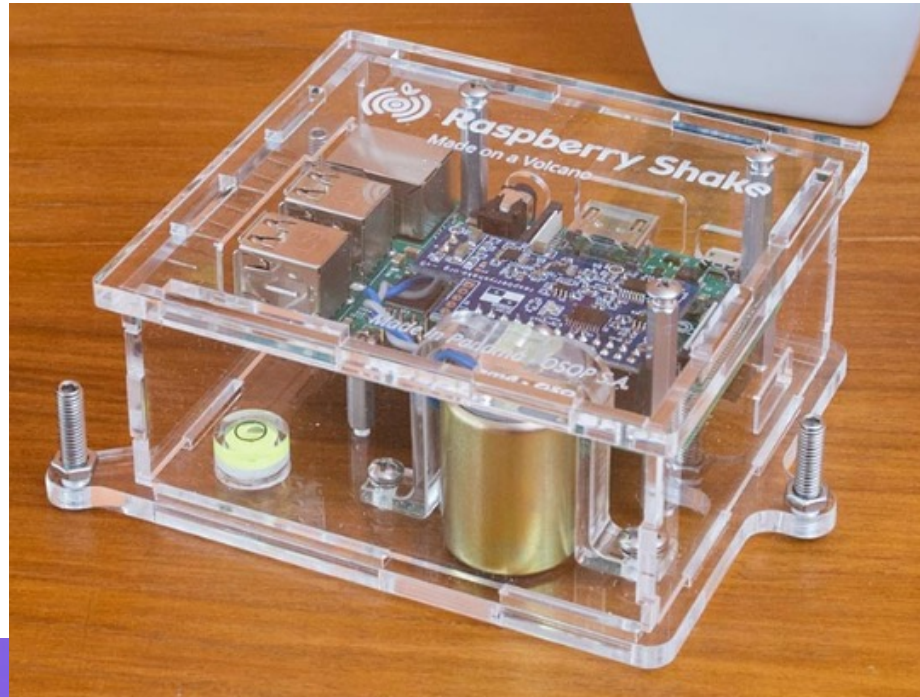


- Kumamoto, Japó, 15/4/2016

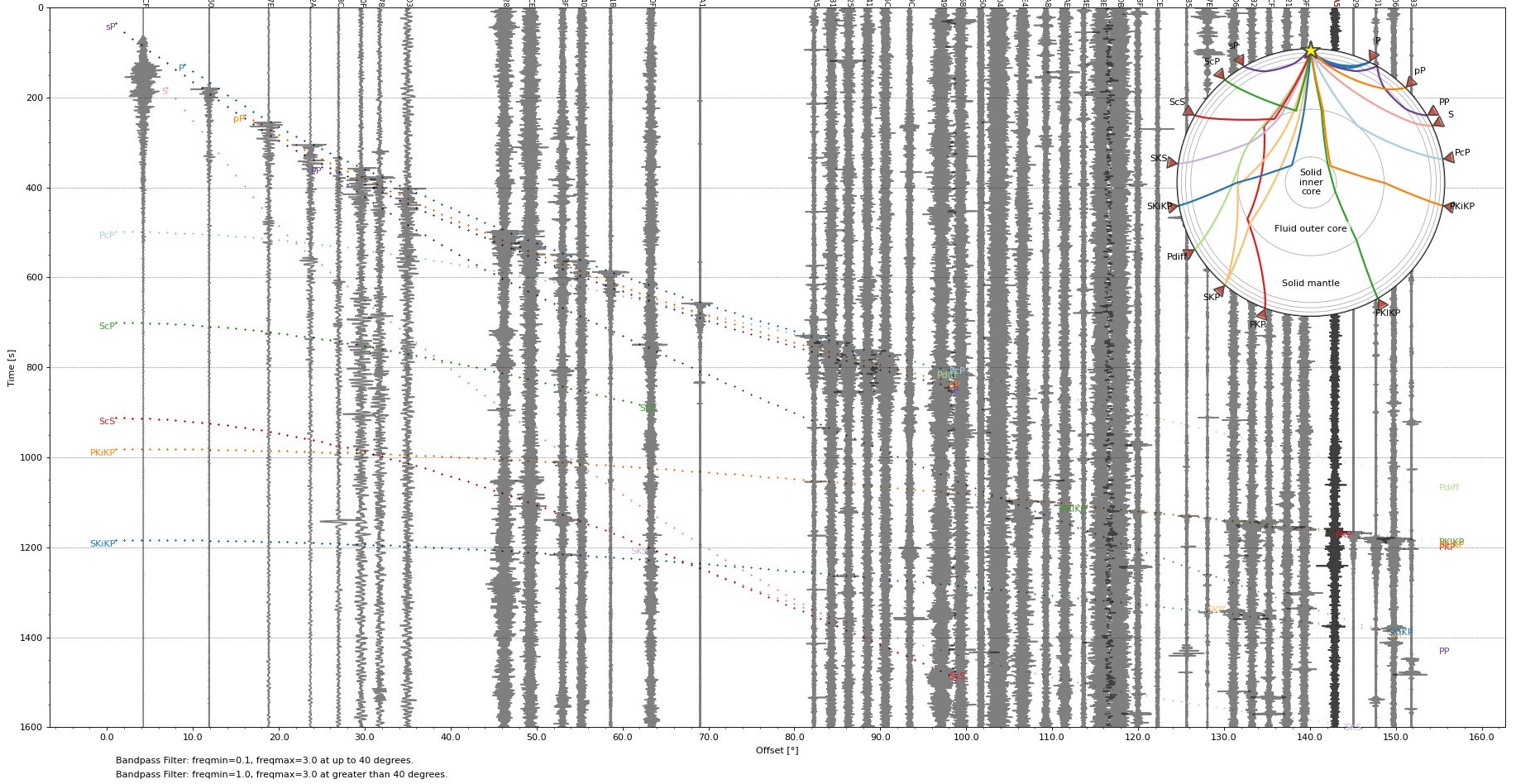




- Mt. Vettore, Central Italy, October 2016, mag 6.5



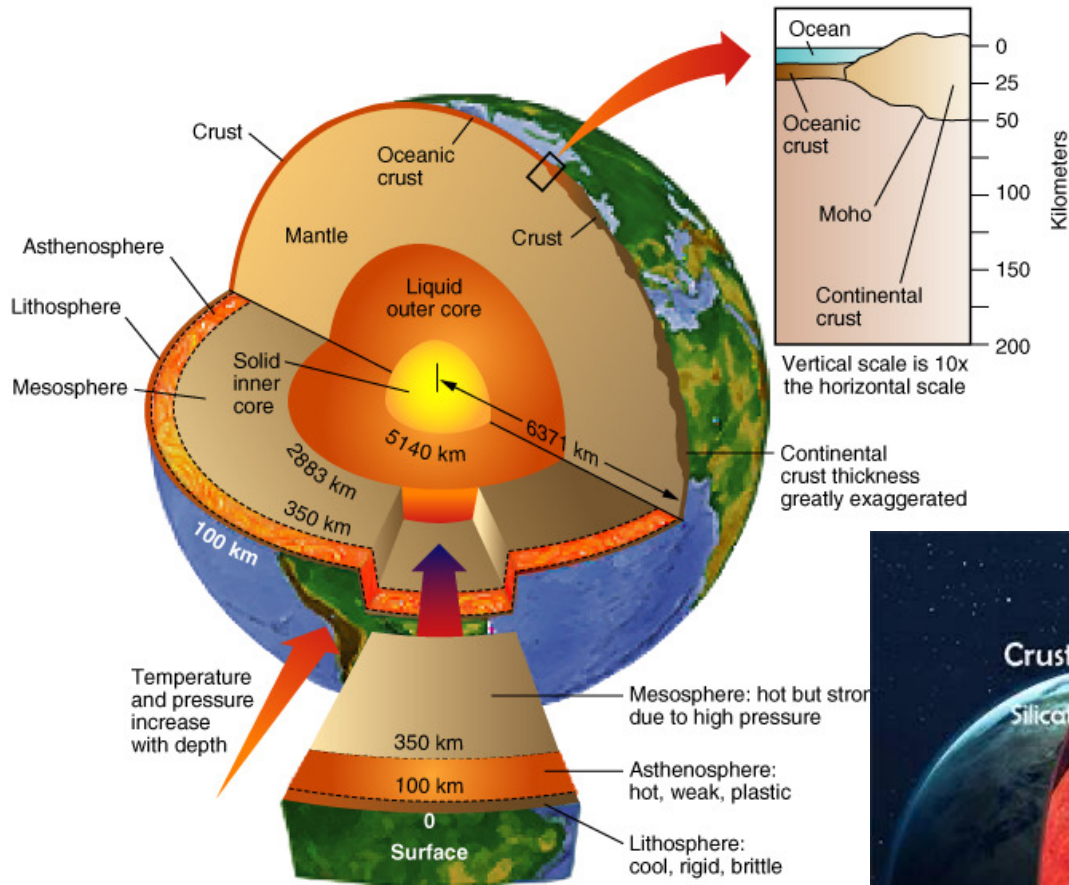
Section plot for Vanuatu-2021-10-18-M61 2021-10-18 07:26:52 lat:-13.7397 lon:166.9399
Modelled arrival times for phases using iasp91 with a focal depth of 96.48km





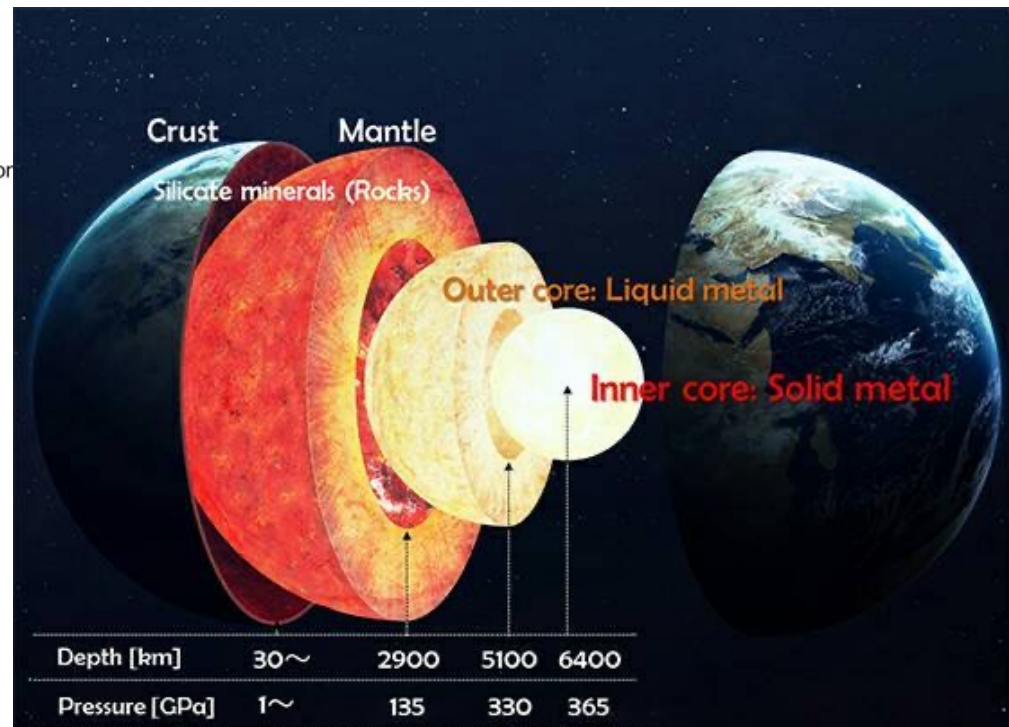
- Tal i com els metges utilitzen els raigs X o els TAC per veure l'interior del nostre cos, podem utilitzar els raigs sísmics per investigar l'estructura interna de la terra



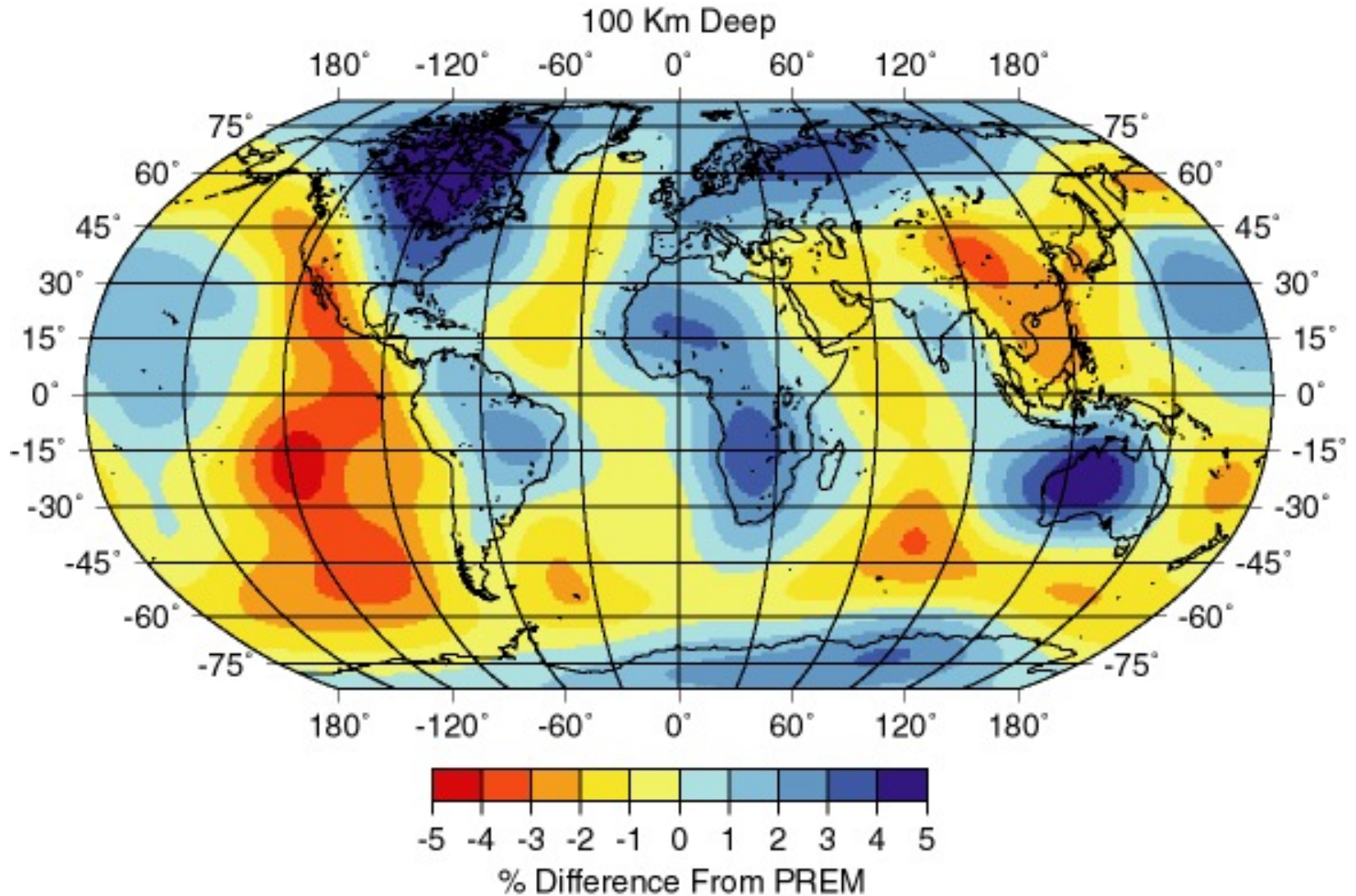


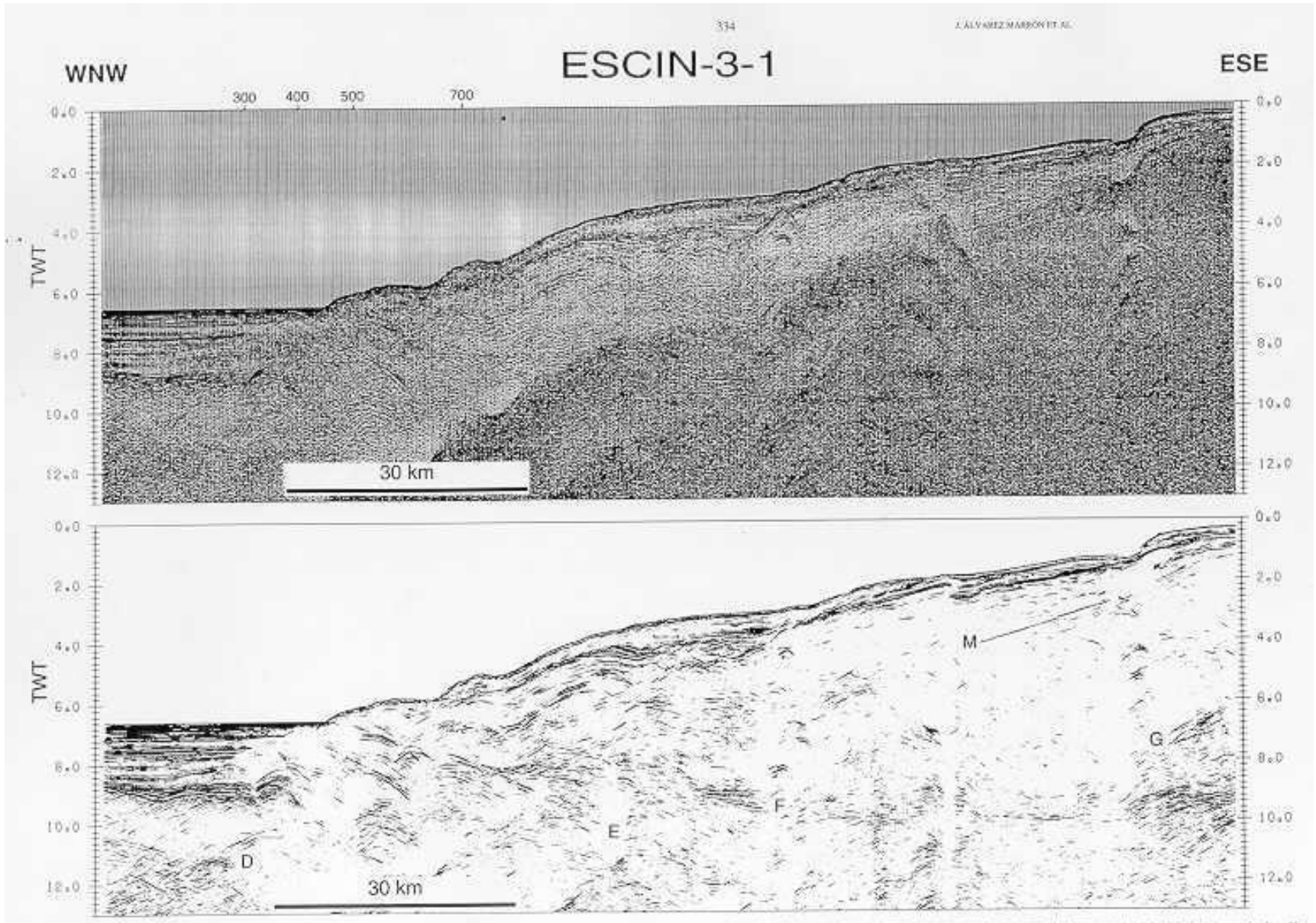
L'estructura de la Terra en nucli, mantell i escorça es va fixar gràcies a l'estudi de la propagació d'ones sísmiques, en temps no tan llunyans (1900-1940)

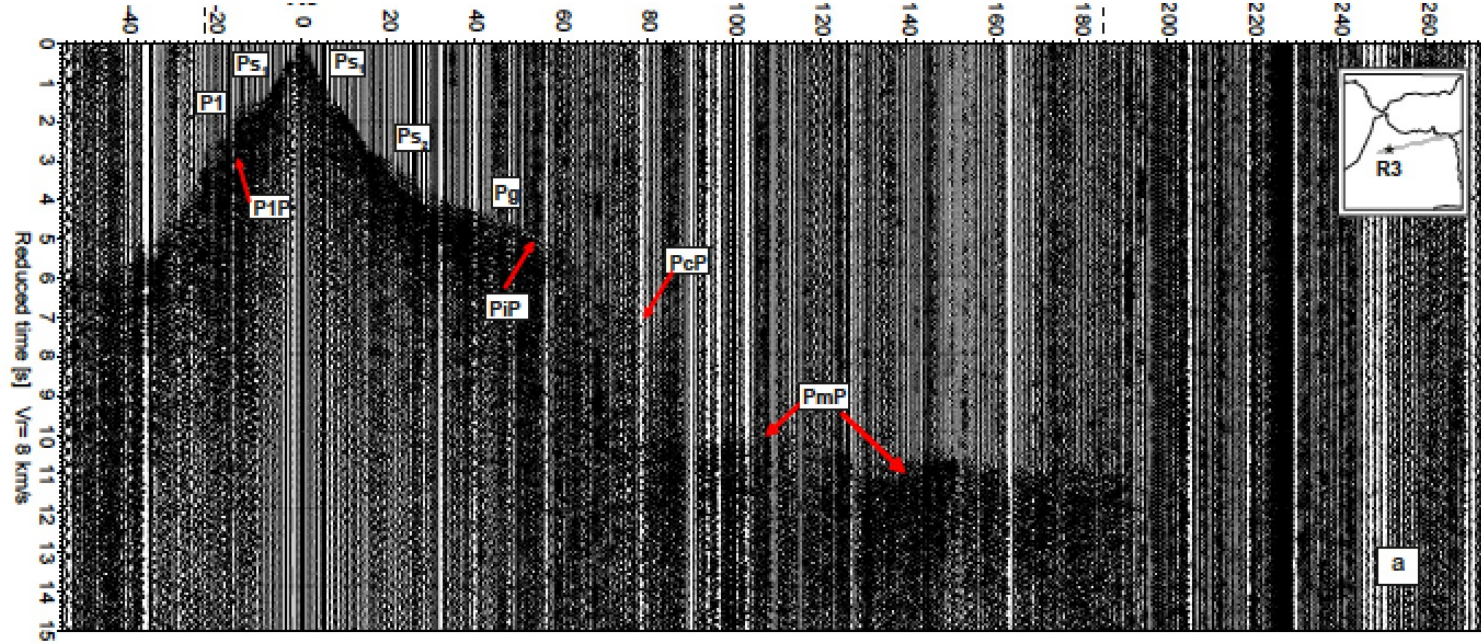
Copyright 1999 John Wiley and Sons, Inc. All rights reserved.



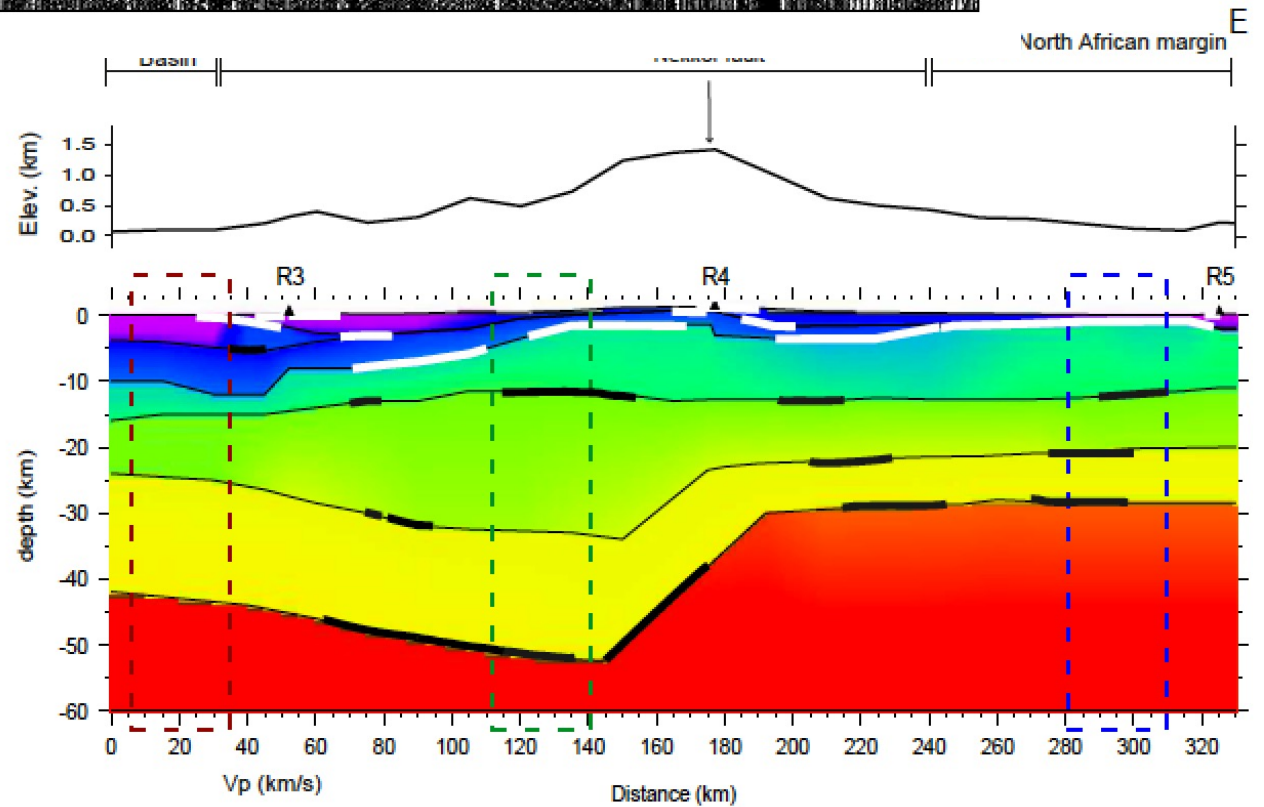
Tomografía sísmica: mapas del interior de la Tierra

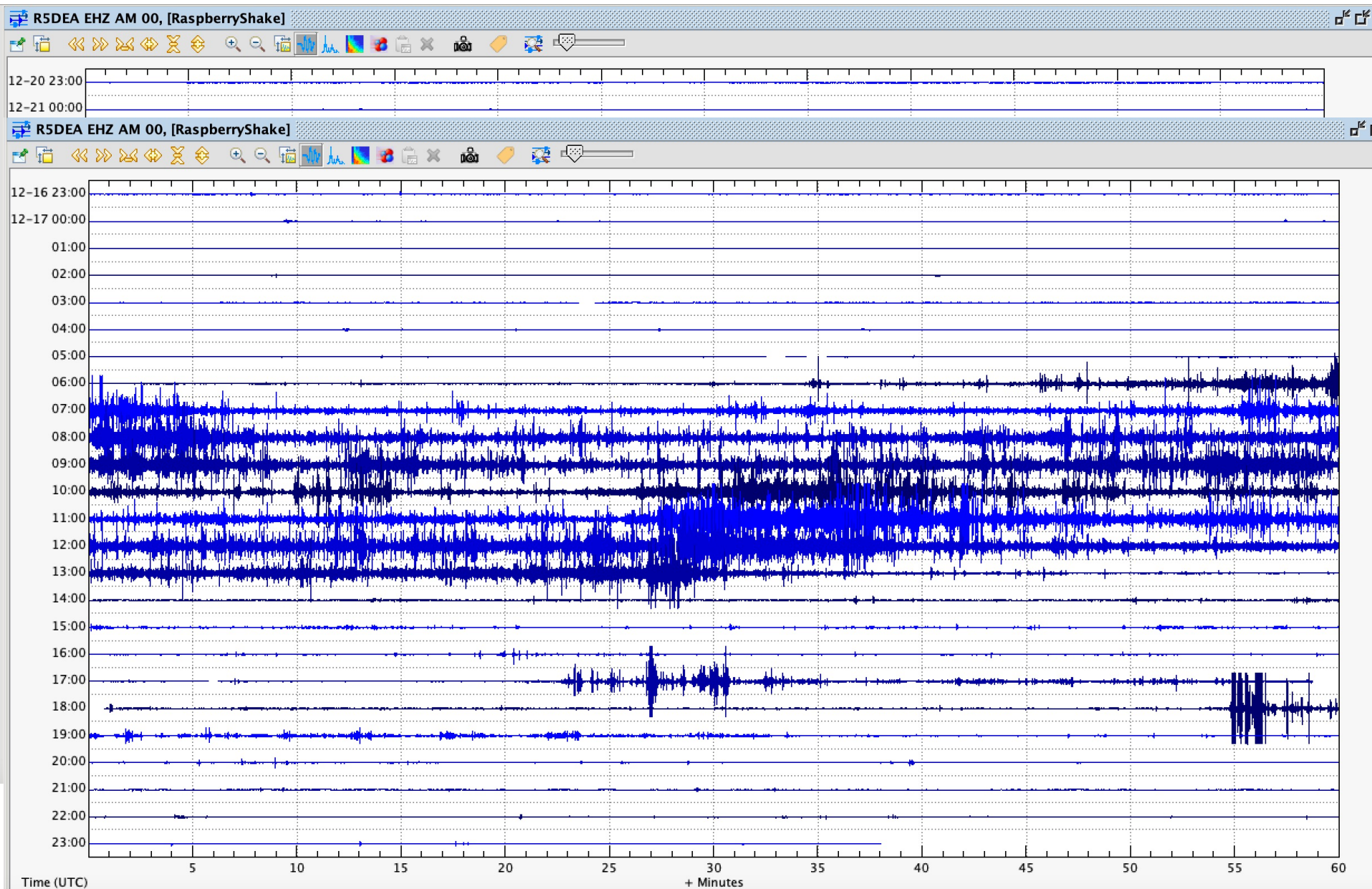


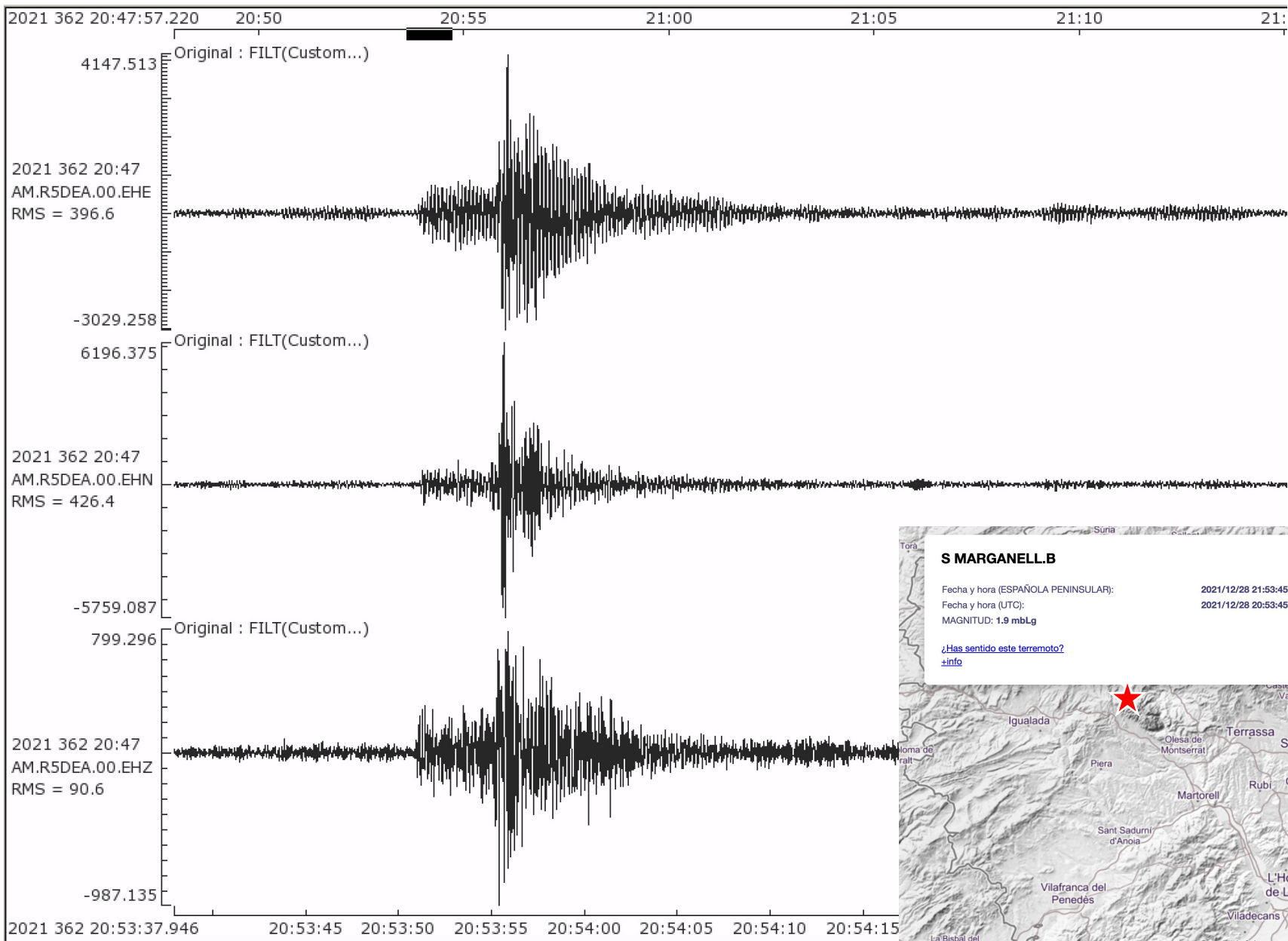




R15a1-R3-EW





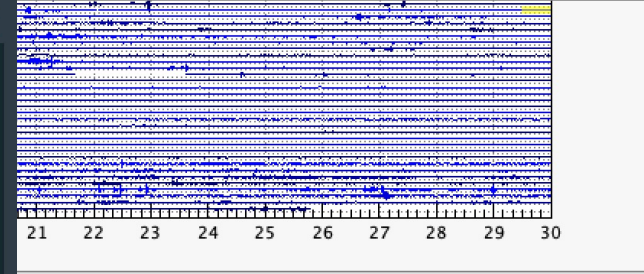
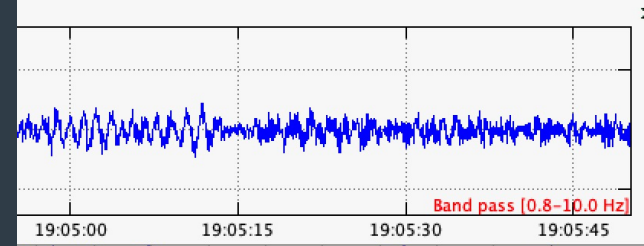
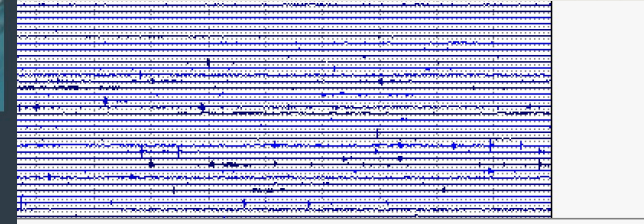
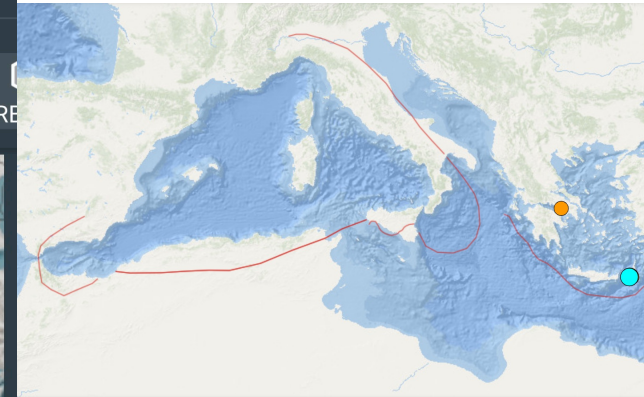
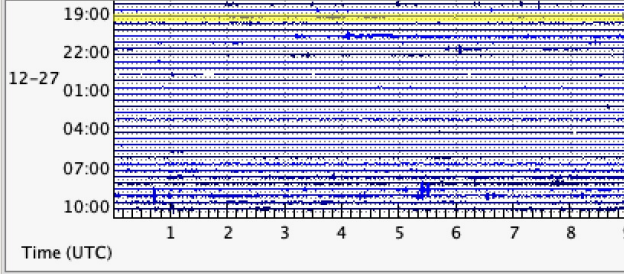
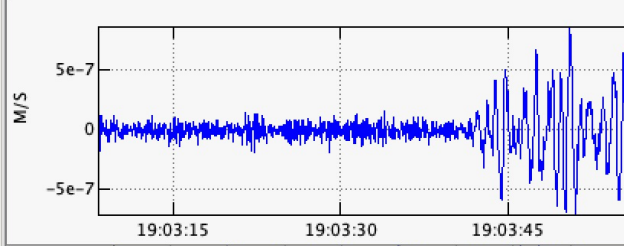
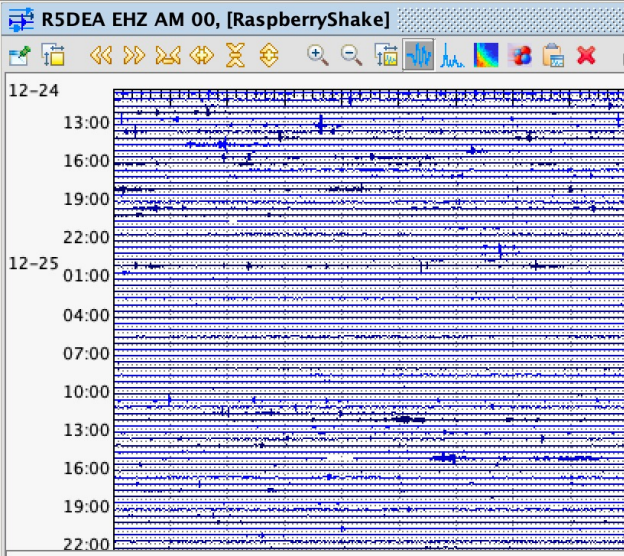
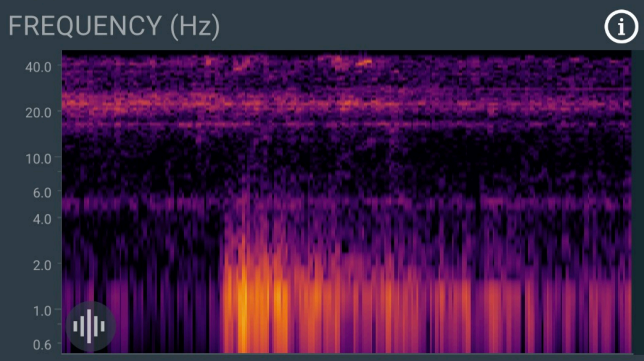
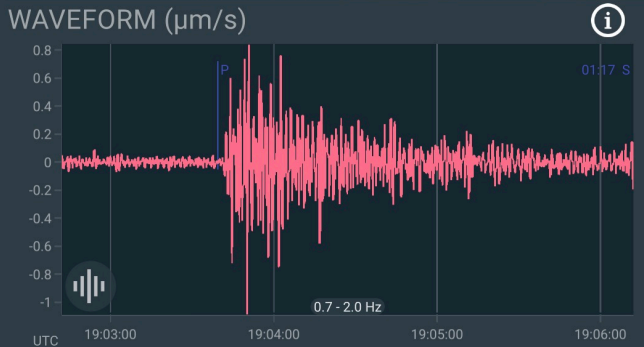
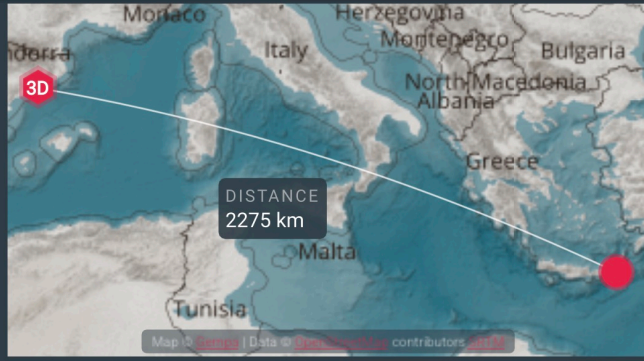


25/12/2021 18:59. 5.6 Mw

11:53 M+ [social icons] 4G [signal strength] 53% [battery]

< 5.6 Crete, Greece 2021-12-26 18:59:02 ↓ 10 km

MY STATIONS FOLLOWING
R59E2 R0A45 R10D3 R4B31 R5DEA





28/11/2021 10:52 7.5 Mw. Perú



CSIC
CONSEJO SUPERIOR DE INVESTIGACIONES CIENTÍFICAS



GEO3BCN
Geosciences Barcelona - CSIC

