



# Resveratrol Modulates Desaturase Expression and Fatty Acid Composition of Cultured Hepatocytes

Gianna Kühn<sup>1\*</sup>, Kathrin Pallauf<sup>1</sup>, Carsten Schulz<sup>2,3</sup>, Marc Birringer<sup>4</sup>, Beatriz Diaz-Rica<sup>5</sup>, Sonia de Pascual-Teresa<sup>5</sup> and Gerald Rimbach<sup>1</sup>

<sup>1</sup> Institute of Human Nutrition and Food Science, University of Kiel, Kiel, Germany, <sup>2</sup> Institute of Animal Breeding and Husbandry, University of Kiel, Kiel, Germany, <sup>3</sup> GMA-Gesellschaft für Marine Aquakultur mbH, Büsum, Germany, <sup>4</sup> Department of Nutritional, Food, and Consumer Sciences, University of Applied Sciences Fulda, Fulda, Germany, <sup>5</sup> Department of Metabolism and Nutrition, Institute of Food Science, Food Technology and Nutrition (ICTAN-CSIC), Madrid, Spain

## OPEN ACCESS

### Edited by:

Alessandra Durazzo,  
Consiglio per la ricerca in agricoltura e  
l'analisi dell'economia agraria (CREA),  
Italy

### Reviewed by:

Zhaojun Wei,  
Hefei University of Technology, China  
Arturo Anadón,  
Complutense University of Madrid,  
Spain  
Ciprian Iliescu,  
National University of Singapore,  
Singapore

### \*Correspondence:

Gianna Kühn  
kuehn@foodsci.uni-kiel.de

### Specialty section:

This article was submitted to  
Nutrition and Food Science  
Technology,  
a section of the journal  
Frontiers in Nutrition

**Received:** 20 July 2018

**Accepted:** 23 October 2018

**Published:** 14 November 2018

### Citation:

Kühn G, Pallauf K, Schulz C,  
Biringner M, Diaz-Rica B, de  
Pascual-Teresa S and Rimbach G  
(2018) Resveratrol Modulates  
Desaturase Expression and Fatty Acid  
Composition of Cultured Hepatocytes.  
*Front. Nutr.* 5:106.  
doi: 10.3389/fnut.2018.00106

This study aimed to evaluate whether resveratrol (RSV) and its microbial metabolites dihydro-resveratrol (DHR) and lunularin (LUN) affected fatty acid metabolism and omega-3 polyunsaturated fatty acid (n3-PUFA) synthesis in cultured hepatocytes. To this end, cultured human HepG2 hepatocytes were treated with non-toxic concentrations of these polyphenols (40  $\mu$ M) and  $\Delta$ 5- and  $\Delta$ 6-desaturase (*FADS1* and *FADS2*, respectively) expression was measured. Resveratrol induced both genes but DHR and LUN showed no effect. Co-incubation of RSV with  $\alpha$ -linolenic acid (ALA) also induced *FADS1* and *FADS2* expression. Moreover, transcription of *carnitine palmitoyltransferase 1A* and *fatty acid synthase* expression was increased, indicating induction of  $\beta$ -oxidation and fatty acid synthesis, respectively. Using gas chromatography to measure fatty acid levels, we observed the impact of RSV with and without ALA treatment on fatty acid composition. However, RSV reduced unsaturated while increasing saturated fatty acid levels. We found lower amounts of monounsaturated fatty acids (16:1n-7c, 18:1n-9c, 18:1n7c, and 20:1n-9) and n3-PUFA docosahexaenoic acid whereas unsaturated fatty acid levels, especially of stearic acid, were elevated. Of interest, once we co-incubated the cells with RSV together with bovine serum albumin, we found no differences in gene expression compared to cells without RSV treatment. Although we found no positive effect of RSV on n3-PUFA synthesis, the stilbene could possibly prevent cellular stress by decreasing unsaturated fatty acid levels.

**Keywords:** resveratrol, HepG2 cells, omega-3, desaturase, stearic acid

## INTRODUCTION

Consumption of omega-3-fatty-acid-rich foods (1), such as fish, walnuts, or algae (2, 3) may decrease cardiovascular disease risk. The most important omega-3 long-chain polyunsaturated fatty acids (n3-PUFA) are eicosapentaenoic acid (C20:5n-3; EPA) and docosahexaenoic acid (C22:6n-3; DHA). General recommendations of EPA and DHA consumption vary between 250 and 1,000 mg per day for healthy adults (4). Atlantic salmon (*Salmo salar*) contains approximately two grams of long chain PUFAs per 100 g, with farmed fish usually containing higher lipid and thus

PUFA levels than wild fish (5). However, aquaculture cannot fully compensate for the decreasing amounts of wild fish and the increasing demand due to growing world population (6). Therefore, developing supplements or functional foods that favor the synthesis of n3-PUFAs from their essential precursor  $\alpha$ -linolenic acid (C18:3n-3; ALA) (7) in humans could possibly be an alternative to fish oil consumption *per se*.

Synthesis of PUFAs (Figure 1) mainly occurs in liver (11). Here, fatty acid desaturases 1 and 2 (FADS1 and FADS2, respectively) insert double bonds into the carbon chains of EPA and DHA precursors. FADS1 adds a double bond to C20:4n-3 whereas FADS2 is responsible for desaturating ALA, C20:3n-3, and C24:5n-3 (12). FADS2 can desaturate at the  $\Delta$ 6- and  $\Delta$ 8-position and thus convert ALA to C18:4n-3 and C20:3n-3 to C20:4n-3 (13, 14). Desaturation at the  $\Delta$ 8-position is exclusively conducted by FADS2 (15).

Transcription factors regulating *FADS1* and *FADS2* gene expression are proliferator-activated receptor alpha (PPAR $\alpha$ ) (8), liver X receptor and sterol regulatory element binding protein-1c (SREBP-1c) (16). They are regulated by external ligands and cofactors and may induce or inhibit each other (17–20). Moreover, EPA and fasting conditions possibly activate PPAR $\alpha$ , whereas C18:1n-9, ALA, C22:5n-3, and DHA impede its action (20). Interestingly and in contrast to regulation of PPAR $\alpha$ , EPA and states of hunger have been shown to inhibit SREBP-1c (21). Further PPAR $\alpha$  targets have been reported to code for proteins involved in  $\beta$ -oxidation such as carnitine palmitoyltransferase 1A (CPT1) (8). Thereby, the risks because of high levels of unsaturated phospholipids in the cell membrane and, consequently, oxidative damage may be lowered (22, 23).

Resveratrol (RSV) is a plant derived stilbene (Figure 1C) found in grapes and other fruits [reviewed by (24)]. Studies on the polyphenol have reported protective effects against coronary heart diseases [reviewed by (25)], antioxidant activities (26) and other effects that partly mimic those of caloric restriction [reviewed by (27)]. Furthermore, it has been hypothesized that RSV may activate PPAR $\alpha$  (via the 4'-OH group; Figure 1C) (28). Thus, RSV may affect n3-PUFA synthesis (29–32).

In the gut, RSV was shown to be metabolized with type and amount of derivatives varying greatly inter- and intraspecifically. In humans, depending on the microbiota composition, RSV is metabolized to dihydro-resveratrol (DHR) and may be further metabolized to lunularin (LUN), both of which contain the potentially PPAR $\alpha$ -mediating 4'-OH group (Figures 1D,E) (33). Low concentrations of DHR have been reported as showing proliferative actions whereas higher amounts, similar to RSV, are possibly rather antiproliferative agents (34). Furthermore, low doses of DHR may decrease cholesterol accumulation by inhibiting fatty acid binding protein 4 (35).

**Abbreviations:** ALA,  $\alpha$ -linolenic acid; BSA, bovine serum albumin; CPT1, carnitine palmitoyltransferase 1A; DHA, docosahexaenoic acid; DHR, dihydro-resveratrol; EPA, eicosapentaenoic acid; EtOH, ethanol; FADS, fatty acid desaturase; FAME, Fatty acid methyl ester; FASN, fatty acid synthase; GAPDH, glyceraldehyde 3-phosphate dehydrogenase; n3-PUFA, omega-3 polyunsaturated fatty acid; LUN, lunularin; PPAR, peroxisome proliferator-activated receptor; RSV, resveratrol; SREBP-1c, sterol regulatory element binding protein-1c.

In order to compare how RSV and its gut metabolites DHR and LUN affect *FADS1* and *FADS2* expression, we included all three polyphenols in our experiments. In addition, due to the positive effects reported for RSV on fatty acid metabolism, we aimed to determine the potential of RSV and its derivatives DHR and LUN to modulate fatty acid metabolism and especially n3-PUFA synthesis *in vitro*.

## MATERIALS AND METHODS

### Materials

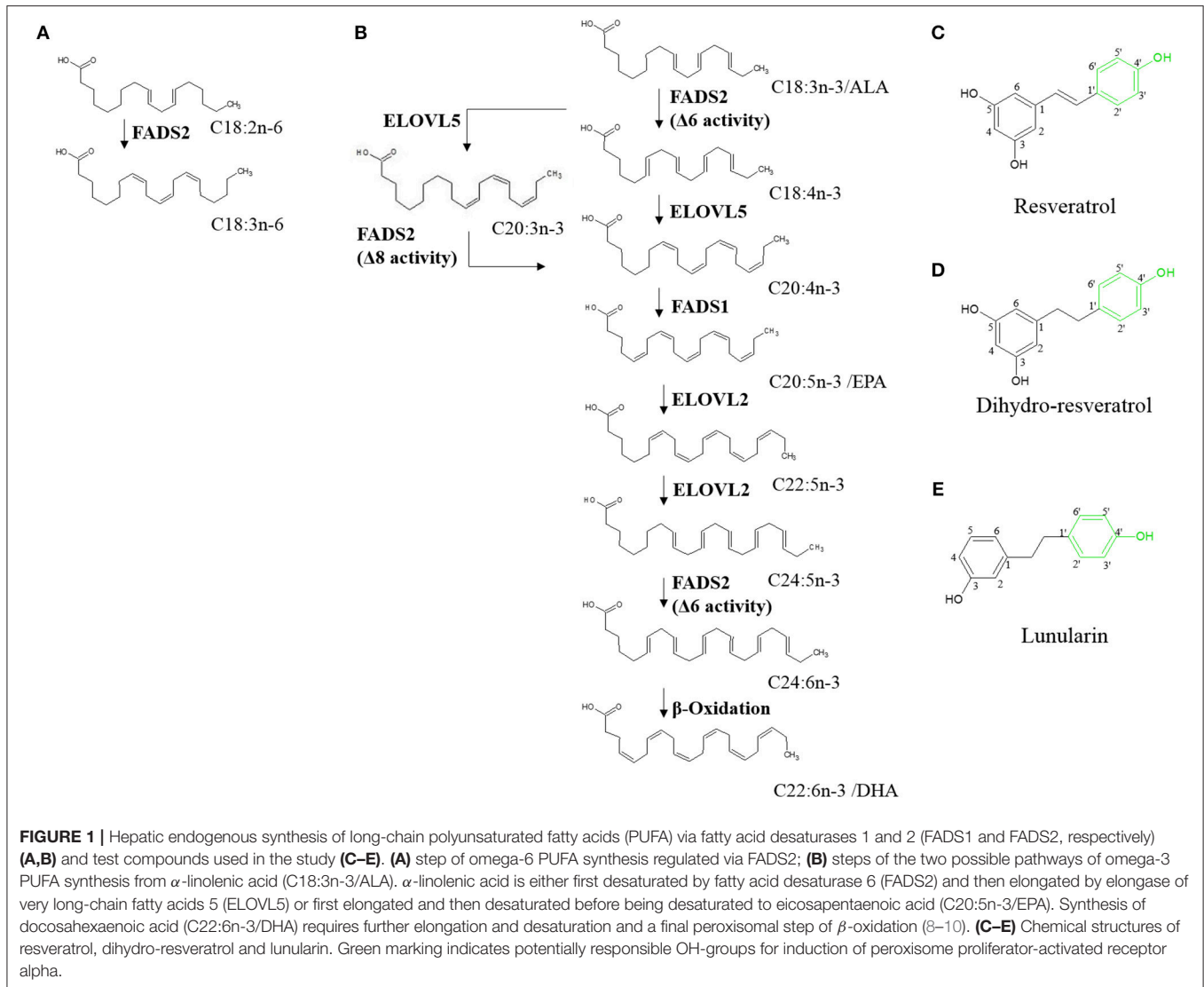
$\alpha$ -Linolenic acid was obtained from Sigma-Aldrich, Buchs, Switzerland. Resveratrol (IUPAC name: 5-[(E)-2-(4-hydroxyphenyl)ethenyl] benzene-1,3-diol; C<sub>14</sub>H<sub>12</sub>O<sub>3</sub>; CAS number 501-36-0; purity  $\geq$ 98%) was provided by Carl Roth (Karlsruhe, Germany). Dihydro-resveratrol (IUPAC name: 5-[2-(4-hydroxyphenyl)ethyl] benzene-1,3-diol; C<sub>14</sub>H<sub>14</sub>O<sub>3</sub>; CAS number 58436-28-5; purity  $\geq$ 98%) was synthesized according to Faragher et al. (36) and LUN (IUPAC name: 3-[2-(4-hydroxyphenyl)ethyl] phenol; C<sub>14</sub>H<sub>14</sub>O<sub>2</sub>; CAS number 37116-80-6; purity >97%) was obtained from Ark Pharm, Inc. (Illinois, USA).

### Cell Culture

HepG2 cells (IAZ, Munich, Germany; ATCC No: CCL-23) were cultured in RPMI-1640 with L-glutamine (PAN Biotech, Aidenbach, Germany). The passage number was  $\leq$ 25. The medium was supplemented with 10% (vol/vol) heat inactivated fetal bovine serum (Gibco™ by Thermo Fisher Scientific GmbH, life technologies™, Darmstadt, Germany) and 1% penicillin/streptomycin (PAN Biotech, Aidenbach, Germany). Cells were grown at 37°C in a humidified 5% CO<sub>2</sub> incubator in T75 or T175 flasks (37). Cytotoxicity was tested with a neutral red assay (38). To make results comparable, RSV, DHR, and LUN were used at the same non-toxic concentration of 40  $\mu$ M. Cells were treated at 80% confluence for periods indicated in the subsequent sections. Test compounds were dissolved in dimethyl sulfoxide (DMSO). For co-incubation experiments, 40 mM stock solutions of ALA in EtOH were used to give a final ALA concentration of 50  $\mu$ M. In all cases, incubations were carried out in duplicate. Experiments were independently performed three times.

### RNA-Isolation and Quantitative Real Time (qRT) Polymerase Chain Reaction (PCR)

Cells were treated with 40  $\mu$ M compounds; in the case of RSV with or without co-incubation with ALA. After 24 h of treatment, cells were harvested with peqGOLD TriFast and RNA was isolated according to the manufacturer's protocol (peqGOLD TriFast, VWR International, Radnor, USA). Sample RNA-concentrations and quality were determined with a Nano Drop 2000 (Thermo Fisher Scientific GmbH, life technologies™, Darmstadt, Germany). The A<sub>260</sub> was used to calculate RNA concentrations. The ratio of absorbance at 260 and 280 nm was used to assess of RNA purity. Samples were frozen at



–80°C at a concentration of 100 ng/ $\mu$ l and the 260/280 ratio was  $\geq 1.8$ . The ratios for all samples can be found in **Supplementary Material**. Gene expression was analyzed via quantitative real time polymerase chain reaction (qRT-PCR) with SensiFAST™ SYBR® No-ROX One-Step Kit (Bioline GmbH, Luckenwalde, Germany) using a Rotorgene 6000 cycler (Corbett Life Science, Sydney, Australia). To this end, samples were diluted with nuclease free water and the qRT-PCR reagents to a final concentration of 0.2 ng/ $\mu$ l. Sequences of used primers *FADS1*, *FADS2*, *CPT1*, *fatty acid synthase (FASN)*, and housekeeping gene *glyceraldehyde-3-phosphate dehydrogenase (GAPDH)* are given in **Table 1**. Primers for *FADS1*, *FADS2*, *CPT1*, and *GAPDH* were self-designed using Primer3web. The *FASN* primer was obtained from the Harvard Primer Bank (PrimerBank ID 41872630c1) (39).

The expression levels of the target genes were determined by normalizing the calculated relative concentrations to the housekeeping gene *GAPDH*.

## Western Blotting Analyses

Cells were treated with 40  $\mu$ M of RSV with or without ALA for 24 h. For protein analysis, whole cell protein lysates from HepG2 were harvested with RIPA buffer (50 mmol/l Tris, 150 mmol/l NaCl, 0.5% sodium deoxycholate (v/v), 0.1% SDS (w/v), 1% NP-40 (v/v), pH 7.4) supplemented with proteinase inhibitors. Protein concentrations were determined with the Pierce™ BCA assay (Thermo Fisher Scientific GmbH, life technologies™, Darmstadt, Germany) according to the manufacturer's instructions and analyzed by Western Blotting analysis as described before (40). Briefly, 30  $\mu$ g per samples were heated with loading buffer and applied to Mini-PROTEAN® Stainfree™ Precast Gels (4–20%, BioRad laboratories GmbH, Munich, Germany). Samples were transferred to a polyvinylidenedifluoride membrane (Bio-Rad laboratories GmbH, Munich, Germany) and blocked with skim milk dissolved in Tris-buffered saline + 0.05% (v/v) Tween 20. Membranes were then incubated with the

**TABLE 1** | Sequences of primers used in this study.

Gene name	Sequence forward	Sequence reverse
GAPDH—Glyceraldehyde-3-phosphate dehydrogenase	CAATGACCCCTTCATTGACC	GATCTCGCTCCTGGAAGATG
FADS1—fatty acid desaturase 1	GATGCCCTCGACACAATTACC	CTGCCCTGACTCCTTTAGTG
FADS2—fatty acid desaturase 2	ACAAGGATCCCGATGTGAAC	TTCGTGCTGGTGATTGTAGG
CPT1—carnitine palmitoyltransferase 1A	CTGCTTTACAGGCGCAAAC	TCATGTGCTGGATGGTGTCT
FASN—fatty acid synthase	AAGGACCTGTCTAGGTTTGATGC	TGGCTTCATAGGTGACTTCCA

primary antibodies FADS1, FADS2, CPT1, GAPDH (sc-134337, sc-98480, sc-48357, and sc-20357, respectively; Santa Cruz Biotechnology Inc., Dallas, USA) and FASN (bs-5045R, Bioss Inc., Massachusetts, USA). Secondary antibodies were from Santa Cruz Biotechnology Inc., Dallas, USA. Results were analyzed using Image Lab 5.0 (Bio-Rad laboratories GmbH, Munich, Germany).

## Analysis of Fatty Acid Composition

Cells were treated for either 24 or 48 h and harvested by adding 1 mL of Dulbecco's phosphate buffered saline to each well, scratching the cells gently off the plate and transferring the suspension to 2 mL cups, maintaining the samples always on ice. After centrifugation at 2,000 g and 4°C for 5 min, the supernatant was discarded and pellet was resuspended in 200 µl of 0.2M sodium chloride. Samples were frozen at −80°C until further analysis. Fatty acid composition was analyzed according to Vauzour et al. (41) by gas chromatography with a flame ionization detector. Briefly, samples were lyophilized at −60°C for 19 h followed by 1 h at −70°C. Fatty acid methyl esters (FAMES) were synthesized by incubation with 0.5 M sodium methoxide and incubated at 60°C for 15 min, followed by extraction with acetyl chloride in methanol 1:10 (v/v) and incubation at 60°C for 60 min. One milliliter purified water, 1.5 mL hexan, and sodium sulfate were added to each sample, followed by a centrifugation step (4°C, 1,500 rpm for 5 min). One milliliter of the supernatant was used for further analysis. Samples were evaporated in a Savant™ SPD131DDA SpeedVac™ Concentrator (Thermo Fisher Scientific, Madrid, Spain) and resuspended in hexane. FAMES analysis was conducted in a 7820A Agilent gas chromatograph (Agilent Technologies Spain) equipped with an Agilent HP-23 capillary column (60 m × 250 µm × 0.25 µm, Agilent Technologies Spain) and helium (1.0 mL/min) as the carrier gas. The temperature protocol was the following: initial temperature 100°C, ramp 8°C/min to 145°C (20 min), ramp 5°C/min to 195°C (5 min), ramp 5°C to 215°C (15 min), ramp 5°C to 230°C (5 min). Chromatograms were recorded and analyzed using Agilent EZChrom Elite software (Agilent Technologies Spain) with 13:0 as the internal standard. Fatty acid composition was calculated as a percentage of the total identified FAMES. The method was validated with original standards for every fatty acid quantified. Additionally, tridecanoic acid (C13:0) was used as internal standard and in every case a response factor of 1 was used. The limit of quantification was calculated as being below 0.02 mg/g dry matter and the limit of detection was 0.005 mg/mL for every fatty acid.

## Statistics

Statistical analyses were performed with the software RStudio® (RStudio, Version 1.0.136, Inc., Boston, USA) (42), using an appropriate mixed model (43, 44). Normal distribution was determined before the analyses with the Shapiro-Wilk-Test and by graphical interpretation using a residual plot. The treatment was regarded as a fixed factor and the replicate as a random factor. Based on this model, a Pseudo  $R^2$  was calculated (45) and an analysis of variances (ANOVA) was conducted, followed by a *post-hoc* multiple comparison test of Dunnett (46) to compare the effects to the DMSO control or a *post-hoc* multiple comparison test of Tukey to determine differences between the means of all treatments.

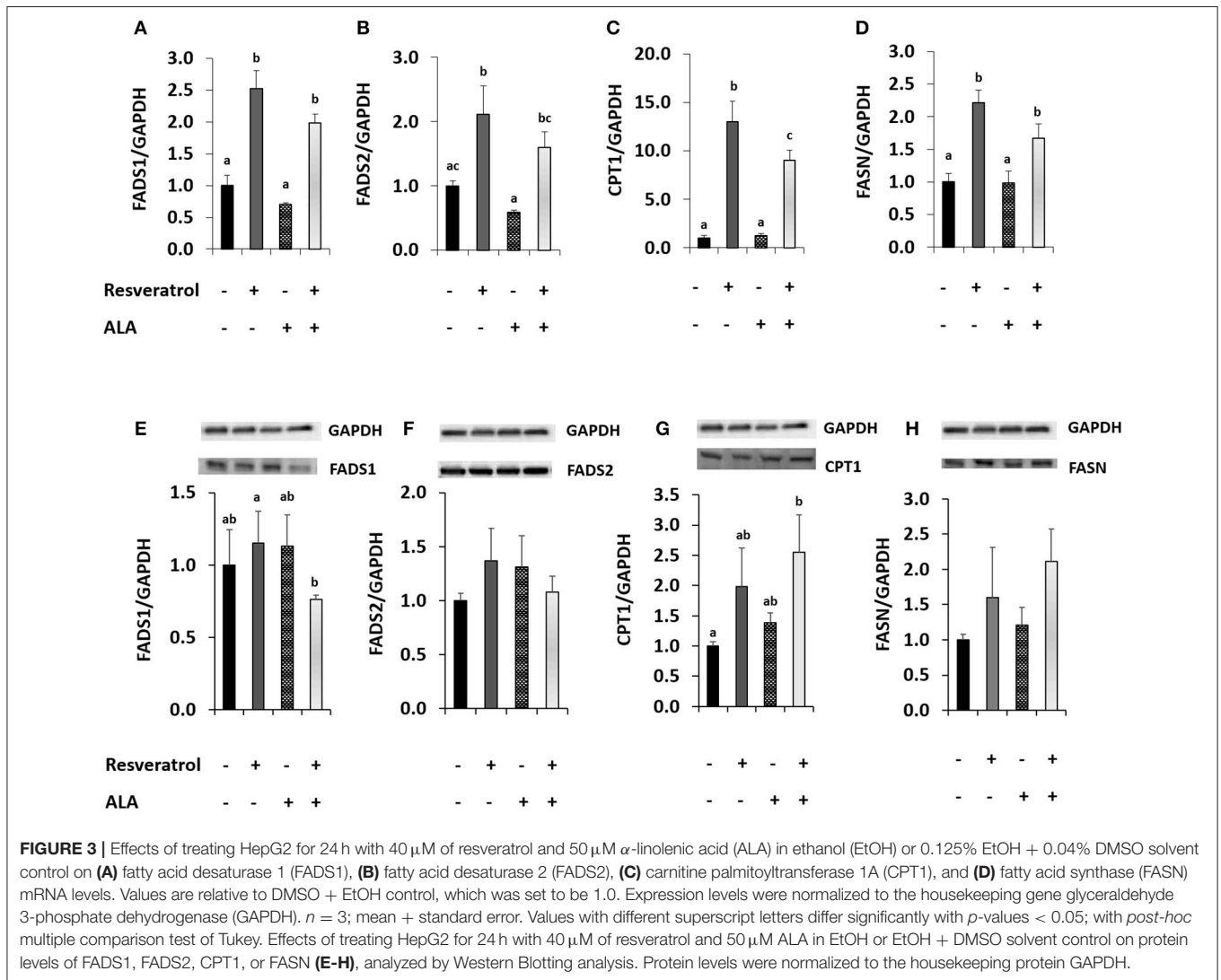
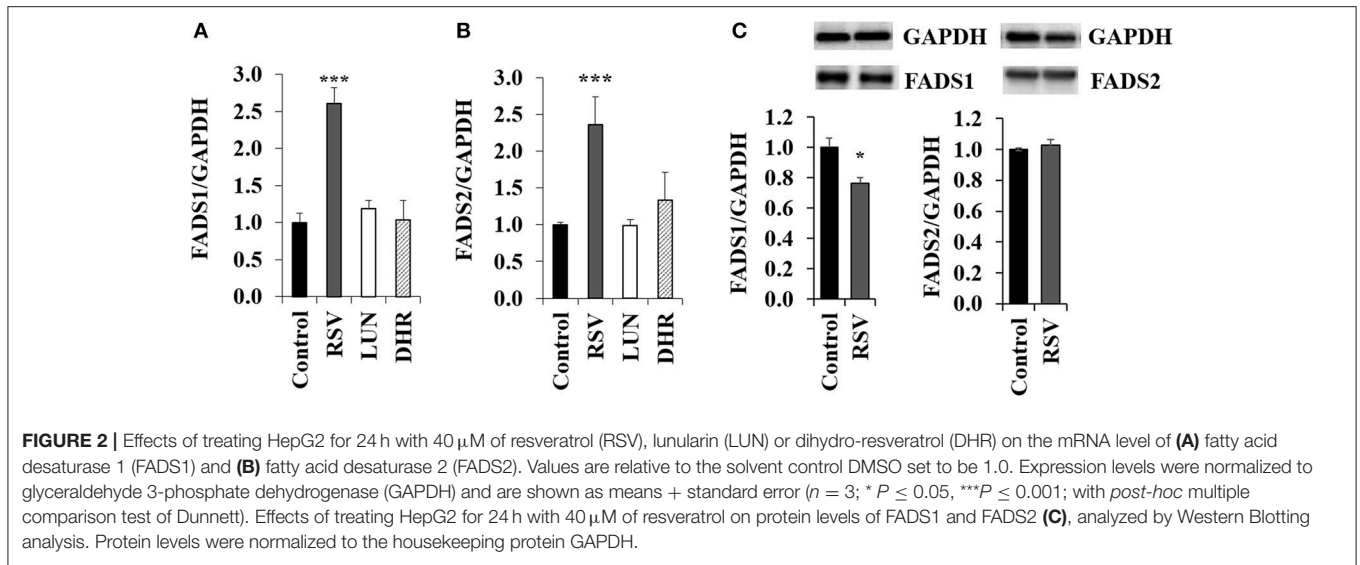
## RESULTS

Compound cytotoxicity was tested in a neutral red assay (**Supplementary Figure S1**) and only a non-toxic dose was applied in the following experiments.

Treating HepG2 cells with 40 µM of RSV induced transcription of *FADS1* and *FADS2* while 40 µM of DHR and LUN showed no effect (**Figures 2A,B**). On the protein level, RSV slightly lowered *FADS1* and did not have any impact on *FADS2* (**Figure 2C**; **Supplementary Figure S3**).

We conducted a second experiment to determine whether application of external ALA influenced RSV action. In our first attempt, we applied ALA complexed with BSA. When applying RSV together with BSA, the induction of *FADS1* and *FADS2* disappeared (**Supplementary Figures S2, S4**), possibly because of RSV binding to BSA (47). Therefore, we chose to apply ALA dissolved in EtOH for our experiments of co-incubation with RSV. When adding EtOH-dissolved ALA, *FADS2* expression was inhibited compared to the EtOH solvent control. Induction of *FADS1* and *FADS2* after 40 µM RSV co-incubation with 50 µM of ALA (**Figures 3A,B**) was almost as strong as when applying RSV alone (**Figures 2A,B**). However, protein analysis showed a tendency toward lower *FADS1* levels due to treatment with RSV and ALA (**Figures 3E,F**; **Supplementary Figure S5**).

Resveratrol-induced *CPT1* transcription was more than 10-fold higher than in the solvent control and remained around 9-fold higher when comparing ALA with ALA and RSV (**Figure 3C**). Resveratrol also induced *FASN* (**Figure 3D**). Levels of both proteins appeared to be elevated by RSV and ALA treatment in Western blots, albeit effects on *FASN* were not significant (**Figures 3G,H**).



Determining fatty acid composition with gas chromatography, we found that in cells treated with RSV and ALA, stearic acid and total amounts of saturated fatty acids were enhanced. In contrast, levels of monounsaturated fatty acids C16:1n-7, C18:1n-9c, and C18:1n-7c were decreased. Total levels of PUFA were affected due to the addition of ALA but not the treatment with RSV. While  $\alpha$ -linolenic acid levels tended to and amounts of C20:3n-3 were increased, C22:5n-3 and DHA levels were reduced compared to non-ALA treated cells. With exception of control ALA treated cells, EPA levels were under the detectable limit. Fatty acid composition after 24 and 48 h was very similar (Tables 2, 3).

When complexing ALA with BSA (Supplementary Tables S1, S2), the impact of RSV was similar albeit less strong than with EtOH dissolved ALA. In both experiments, total lipid contents did not differ significantly between the treatments (data not shown).

## DISCUSSION

Resveratrol but not its metabolites LUN or DHR induced the expression of *FADS1* and *FADS2* when used at a concentration of 40  $\mu$ M. While the 4'-OH group in RSV was shown to be important for PPAR $\alpha$  activation (28), cell cycle and antioxidant effects potentially further depend on the 3- and 5-OH groups

and the important *trans* double bond in the stilbenic skeleton (48). Thus, the missing impacts of LUN and DHR on *FADS1* and *FADS2* transcription may be due to the saturated instead of trans-unsaturated bond in both compounds and, additionally, the absence of a 3-OH group in the structure of LUN (Figures 1C–E). Furthermore, it has to be considered that we did not measure intracellular concentrations of the test compounds and therefore cannot exclude lowered bioavailability of LUN and DHR compared to RSV.

ALA-addition to the cells did not significantly change *FADS1* or *FADS2* protein levels compared to non-ALA treated cells with or without RSV.

However, as can be seen in the fatty acid analyses (Tables 2, 3), ALA appears to be taken up by the cells. This coincides with a previously reported dose-dependent increase of intracellular ALA after ALA co-treatment (49). Furthermore, RSV treatment increased ALA levels even more, which has been found in rat hepatocytes treated with 50  $\mu$ M RSV (30) and Atlantic salmon supplemented with 2.5 g/kg RSV (32).

Interestingly, in the cells, levels of total saturated fatty acids, especially stearic acid, were increased by RSV treatment, whereas amounts of monounsaturated fatty acids were lowered. Application of RSV and ALA increased C20:3n-3 levels while lowering EPA, C22:5n-3, and DHA levels. Eicosatetraenoic acid (C20:4n-3) was not detectable in cells treated with RSV and ALA. Based on our mRNA data for *FADS2*, we did not expect

**TABLE 2 |** Fatty acid composition (in % of total fatty acid methyl esters) of HepG2 cells treated for 24 h with 40  $\mu$ M of resveratrol (RSV) and 50  $\mu$ M of  $\alpha$ -linolenic acid (ALA) dissolved in ethanol (EtOH) or solvent control EtOH + DMSO.

Fatty acid	Control	RSV 40 $\mu$ M	Control + ALA	RSV 40 $\mu$ M + ALA
14:0	2.08 $\pm$ 0.28	2.07 $\pm$ 0.22	2.09 $\pm$ 0.11	1.84 $\pm$ 0.20
16:0	21.28 $\pm$ 0.33	23.28 $\pm$ 0.51	21.99 $\pm$ 0.79	24.96 $\pm$ 4.66
<b>18:0</b>	<b>7.74 <math>\pm</math> 0.24<sup>a</sup></b>	<b>15.11 <math>\pm</math> 0.90<sup>b</sup></b>	<b>7.95 <math>\pm</math> 0.09<sup>a</sup></b>	<b>13.87 <math>\pm</math> 0.88<sup>c</sup></b>
20:0	0.35 $\pm$ 0.06	0.55 $\pm$ 0.14	0.32 $\pm$ 0.08	1.08 $\pm$ 0.97
<b>Sum SFA</b>	<b>31.44 <math>\pm</math> 0.14<sup>a</sup></b>	<b>41.02 <math>\pm</math> 1.20<sup>b</sup></b>	<b>32.36 <math>\pm</math> 0.73<sup>a</sup></b>	<b>41.75 <math>\pm</math> 4.99<sup>b</sup></b>
16:1n-7	8.61 $\pm$ 0.41 <sup>a</sup>	5.37 $\pm$ 0.24 <sup>b</sup>	7.59 $\pm$ 0.60 <sup>c</sup>	4.08 $\pm$ 0.67 <sup>d</sup>
18:1n-9c	28.13 $\pm$ 0.93 <sup>a</sup>	24.86 $\pm$ 0.24 <sup>b</sup>	24.42 $\pm$ 2.08 <sup>b</sup>	20.38 $\pm$ 2.77 <sup>c</sup>
18:1n-7c	17.70 $\pm$ 1.13 <sup>a</sup>	13.45 $\pm$ 0.61 <sup>b</sup>	13.96 $\pm$ 1.71 <sup>b</sup>	11.00 $\pm$ 2.47 <sup>c</sup>
20:1n-9	1.86 $\pm$ 0.17 <sup>a</sup>	1.75 $\pm$ 0.05 <sup>a</sup>	1.47 $\pm$ 0.13 <sup>b</sup>	1.42 $\pm$ 0.23 <sup>b</sup>
<b>Sum MUFA</b>	<b>56.30 <math>\pm</math> 2.48<sup>a</sup></b>	<b>45.43 <math>\pm</math> 0.53<sup>b</sup></b>	<b>47.44 <math>\pm</math> 4.50<sup>b</sup></b>	<b>36.88 <math>\pm</math> 6.09<sup>c</sup></b>
18:2n-6c	1.33 $\pm$ 0.16 <sup>ac</sup>	1.41 $\pm$ 0.11 <sup>ac</sup>	1.21 $\pm$ 0.08 <sup>b</sup>	1.74 $\pm$ 0.17 <sup>c</sup>
18:3n-3	nd	nd	3.03 $\pm$ 1.88 <sup>a</sup>	6.76 $\pm$ 1.34 <sup>b</sup>
20:4n-6	3.67 $\pm$ 0.25 <sup>ab</sup>	3.81 $\pm$ 0.26 <sup>a</sup>	3.27 $\pm$ 0.21 <sup>ab</sup>	3.11 $\pm$ 0.47 <sup>b</sup>
<b>20:3n-3</b>	<b>2.61 <math>\pm</math> 2.01<sup>a</sup></b>	<b>3.30 <math>\pm</math> 1.02<sup>a</sup></b>	<b>4.19 <math>\pm</math> 2.96<sup>ab</sup></b>	<b>5.85 <math>\pm</math> 1.85<sup>b</sup></b>
20:4n-3	nd	nd	0.77 $\pm$ 0.12	nd
<b>20:5n-3</b>	<b>nd</b>	<b>nd</b>	<b>2.43 <math>\pm</math> 0.19</b>	<b>nd</b>
22:5n-3	0.59 $\pm$ 0.08 <sup>ad</sup>	0.77 $\pm$ 0.16 <sup>bd</sup>	1.02 $\pm$ 0.07 <sup>c</sup>	0.69 $\pm$ 0.10 <sup>d</sup>
<b>22:6n-3</b>	<b>3.28 <math>\pm</math> 0.02<sup>a</sup></b>	<b>3.28 <math>\pm</math> 0.05<sup>a</sup></b>	<b>3.59 <math>\pm</math> 0.16<sup>a</sup></b>	<b>2.68 <math>\pm</math> 0.53<sup>b</sup></b>
Sum PUFA	9.65 $\pm$ 2.43 <sup>a</sup>	10.13 $\pm$ 1.42 <sup>a</sup>	16.00 $\pm$ 5.15 <sup>b</sup>	15.34 $\pm$ 1.63 <sup>b</sup>
EPA/DHA	nv	nv	0.68 $\pm$ 0.08	nv
ALA/LA	nv	nv	2.51 $\pm$ 1.40 <sup>a</sup>	4.99 $\pm$ 1.05 <sup>b</sup>

*n* = 3; mean  $\pm$  standard deviation. Values with different superscript letters within one row significantly differ with *p*-values < 0.05 with post-hoc multiple comparison test of Tukey. SFA: saturated fatty acids; MUFA: monounsaturated fatty acids; PUFA: polyunsaturated fatty acids; nd: not detectable (values below detection limits); nv: no value (due to values below detection limits). Bold values indicate most important significant findings.

**TABLE 3** | Fatty acid composition (in % of total fatty acid methyl esters) of HepG2 cells treated for 48 h with 40  $\mu$ M of resveratrol (RSV) and 50  $\mu$ M of  $\alpha$ -linolenic acid (ALA) dissolved in ethanol (EtOH) or solvent control EtOH + DMSO.

Fatty acid	Control	RSV 40 $\mu$ M	Control + ALA	RSV 40 $\mu$ M + ALA
14:0	1.97 $\pm$ 0.31	1.96 $\pm$ 0.20	2.23 $\pm$ 0.12	2.09 $\pm$ 0.19
16:0	21.27 $\pm$ 1.07 <sup>a</sup>	23.68 $\pm$ 0.84 <sup>b</sup>	22.95 $\pm$ 0.12 <sup>abc</sup>	23.22 $\pm$ 1.64 <sup>c</sup>
<b>18:0</b>	<b>7.53 <math>\pm</math> 0.39<sup>a</sup></b>	<b>17.07 <math>\pm</math> 1.43<sup>b</sup></b>	<b>8.36 <math>\pm</math> 0.14<sup>a</sup></b>	<b>15.73 <math>\pm</math> 1.88<sup>b</sup></b>
20:0	0.34 $\pm$ 0.13 <sup>a</sup>	0.58 $\pm$ 0.12 <sup>b</sup>	0.27 $\pm$ 0.14 <sup>a</sup>	0.62 $\pm$ 0.02 <sup>b</sup>
<b>Sum SFA</b>	<b>31.11 <math>\pm</math> 1.59<sup>a</sup></b>	<b>43.29 <math>\pm</math> 2.27<sup>b</sup></b>	<b>33.82 <math>\pm</math> 0.29<sup>a</sup></b>	<b>41.66 <math>\pm</math> 3.49<sup>b</sup></b>
16:1n-7	8.33 $\pm$ 0.47 <sup>a</sup>	4.53 $\pm$ 0.24 <sup>b</sup>	7.77 $\pm$ 0.48 <sup>a</sup>	3.65 $\pm$ 0.29 <sup>c</sup>
18:1n-9c	28.46 $\pm$ 1.26 <sup>a</sup>	25.09 $\pm$ 0.42 <sup>b</sup>	26.05 $\pm$ 1.39 <sup>c</sup>	21.55 $\pm$ 0.84 <sup>d</sup>
18:1n-7c	19.96 $\pm$ 2.23 <sup>a</sup>	12.75 $\pm$ 0.60 <sup>b</sup>	15.87 $\pm$ 1.59 <sup>b</sup>	11.04 $\pm$ 0.74 <sup>c</sup>
20:1n-9	1.79 $\pm$ 0.05 <sup>a</sup>	1.61 $\pm$ 0.09 <sup>a</sup>	1.63 $\pm$ 0.08 <sup>a</sup>	1.34 $\pm$ 0.19 <sup>b</sup>
<b>Sum MUFA</b>	<b>58.54 <math>\pm</math> 3.98<sup>a</sup></b>	<b>43.99 <math>\pm</math> 0.31<sup>b</sup></b>	<b>51.32 <math>\pm</math> 3.49<sup>c</sup></b>	<b>37.59 <math>\pm</math> 1.37<sup>d</sup></b>
18:2n-6c	1.15 $\pm$ 0.56 <sup>a</sup>	1.74 $\pm$ 0.68 <sup>a</sup>	0.93 $\pm$ 0.12 <sup>a</sup>	2.39 $\pm$ 1.42 <sup>b</sup>
18:3n-3	nd	nd	0.98 $\pm$ 0.52 <sup>a</sup>	5.36 $\pm$ 2.05 <sup>b</sup>
20:4n-6	2.77 $\pm$ 0.18 <sup>a</sup>	3.25 $\pm$ 0.23 <sup>b</sup>	2.59 $\pm$ 0.26 <sup>b</sup>	2.88 $\pm$ 0.24 <sup>c</sup>
<b>20:3n-3</b>	<b>4.61 <math>\pm</math> 3.40<sup>a</sup></b>	<b>3.60 <math>\pm</math> 2.15<sup>a</sup></b>	<b>3.04 <math>\pm</math> 1.44<sup>a</sup></b>	<b>6.39 <math>\pm</math> 2.53<sup>b</sup></b>
20:4n-3	nd	nd	0.50 $\pm$ 0.18	nd
<b>20:5n-3</b>	<b>nd</b>	<b>nd</b>	<b>2.11 <math>\pm</math> 0.53</b>	<b>nd</b>
22:5n-3	0.29 $\pm$ 0.06 <sup>ad</sup>	0.61 $\pm$ 0.15 <sup>b</sup>	0.88 $\pm$ 0.16 <sup>c</sup>	0.39 $\pm$ 0.29 <sup>d</sup>
<b>22:6n-3</b>	<b>2.59 <math>\pm</math> 0.20<sup>a</sup></b>	<b>2.79 <math>\pm</math> 0.27<sup>a</sup></b>	<b>3.37 <math>\pm</math> 0.38<sup>b</sup></b>	<b>2.53 <math>\pm</math> 0.22<sup>a</sup></b>
Sum PUFA	7.28 $\pm$ 4.51 <sup>a</sup>	9.12 $\pm$ 2.23 <sup>ab</sup>	11.83 $\pm$ 3.23 <sup>b</sup>	14.28 $\pm$ 4.76 <sup>c</sup>
EPA/DHA	nv	nv	0.63 $\pm$ 0.12	nv
ALA/LA	nv	nv	1.06 $\pm$ 0.44 <sup>a</sup>	2.24 $\pm$ 1.84 <sup>b</sup>

*n* = 3; mean  $\pm$  standard deviation. Values with different superscript letters within one row significantly differ with *p*-values < 0.05 with post-hoc multiple comparison test of Tukey. SFA: saturated fatty acids; MUFA: monounsaturated fatty acids; PUFA: polyunsaturated fatty acids; nd: not detectable (values below detection limits); nv: no value (due to values below detection limits). Bold values indicate most important significant findings.

a decrease of fatty acids that are synthesized by this gene product. However, enhanced levels of C20:3n-3 but non-detectable levels of C20:4n-3 after application with RSV and ALA may be caused by decreased FADS2/ $\Delta$ 8-desaturase activity (1) or increased  $\beta$ -oxidation (2):

1. The initial elongation of ALA may be initiated but activity of FADS2 may be inhibited by RSV. As a multi-pass membrane protein, FADS2 (50) possibly interacts with RSV which would be expected to accumulate in membrane departments due to its low solubility in aqueous environments. If RSV somehow inhibited FADS2, it might not be able to act at the  $\Delta$ 6-position and instead, ELOV5 might induce the alternative pathway of synthesis of n3-PUFA (13). However,  $\Delta$ 8-desaturase activity of FADS2 may also be repressed, making C20:3n-3 potentially an inhibitor of further fatty acid desaturation and elongation (Figure 1). Additionally, it has been hypothesized that animals lack  $\Delta$ 8-desaturase activity (51). Missing C20:4n-3 and no effects on FADS2 protein levels after treatment with RSV and EtOH-dissolved ALA supports the theory of missing or blocked  $\Delta$ 8-desaturase activity. This may explain, why C20:3n-3 accumulates in cells treated with ALA, although mRNA level of FADS2 is elevated.

In contrast, detectable levels of C20:4n-3 being the product of C20:3n-3 desaturation and C18:4n-3 elongation in control samples indicate an induction and execution of the pathway of n3-PUFA synthesis in the absence of RSV. In accordance with

this hypothesis of inhibited n3-PUFA synthesis after C18:3n-3 elongation in RSV-treated cells, EPA, C22:5n-3, and DHA levels were lowered in these samples.

2. Another explanation may be an increased  $\beta$ -oxidation and thereby degradation of mono- and polyunsaturated fatty acids. Potential induction of  $\beta$ -oxidation is indicated by enhanced CPT1 expression and protein levels, CPT1 being essential for the passage of fatty acids through the mitochondrial membrane (52). As reported before (53), we found RSV to highly increase CPT1 expression. Thus, via  $\beta$ -oxidation, unsaturated fatty acids may directly be metabolized to saturated fatty acids (54). Additionally, unsaturated fatty acids may be broken down to acetyl CoA, which in turn can be used as a precursor for *de novo* synthesis of saturated fatty acids (55). *De novo* synthesis of fatty acids seems to be induced by RSV, since we found it to increase the expression and protein levels of FASN, which is central in fatty acid synthesis (56).

In contrast to PUFAs, saturated fatty acids are rather related to increased inflammation and high low density lipoprotein cholesterol levels (57, 58). However, it has been hypothesized that stearic acid may improve fitness and lower free fatty acid levels in fruit flies (59). In laboratory mice, dietary stearic acid was reported as reducing visceral adipose tissue. The authors related the effect to apoptosis induction of fat cells due to stearic acid application, which they confirmed *in vitro* in cultured

preadipocytes (60). Furthermore, stearic acid may also decrease cholesterol absorption and inflammatory response (61, 62).

Resveratrol may reduce inflammation by lowering the levels of high-sensitivity C-reactive protein and CC-chemokine ligand 5 *in vivo* (63, 64). In human plasma, these markers were found to be modulated by different fatty acids. Stearic acid and C18:2n-6, which we found to be increased by RSV treatment (Tables 2, 3), may also lower high-sensitivity C-reactive protein and CC-chemokine ligand 5 levels [reviewed by Hunter et al. (65)]. Resveratrol-induced C18:2n-6 increase is in line with previous results in Atlantic salmon (32). The positive effects reported for RSV on cholesterol levels and inflammation (66, 67) may hypothetically, in part, be related to its alteration of fatty acid profiles. Additionally, C16:1n-7, C18:1n-9c, and C18:1n-7c, which were decreased by RSV (Tables 2, 3), have been related positively to the induction of inflammatory enzymes, such as high-sensitivity C-reactive protein and CC-chemokine ligand 5 (62).

An increase of C20:3n-3 may lower inflammation since it has been reported as dose dependently inhibiting inflammatory markers. Of interest, this n3-fatty acid was shown to improve skin barrier function and health in UV-irradiated hairless mice, possibly via the nuclear factor kappa-light-chain-enhancer of activated B cells pathway (68). However, C20:3n-3 has a lower anti-inflammatory potential than EPA (69).

Since unsaturated carbon chains of n3-PUFA enhance susceptibility to oxidative damage (23), RSV may hypothetically protect cells by lowering levels of EPA, C22:5n-3, and DHA. Of interest, RSV has been shown to induce effects similar to caloric restriction [reviewed by Pallauf et al. (27)]. One of the putatively life-span prolonging mechanisms, which RSV and caloric restriction share, could possibly be lowering unsaturated FA content of membrane lipids (70). If such a mechanism contributed to lifespan extension, one could possibly explain species-dependent effects of RSV on longevity, since saturation indexes of membrane vary between species [reviewed by Hector et al. (24)].

The increase of *FADS1* and *FADS2* expression may be due to RSV inducing their transcription via PPAR $\alpha$  (8, 71). Conversely, although we found elevated mRNA levels of *FADS1* and *FADS2* after RSV treatment, neither protein levels nor fatty acid concentrations of n3-PUFA were elevated after 24 or 48 h. We cannot exclude a long-term enhancing effect of RSV on n3-PUFA levels. However, decreased EPA due to RSV treatment but no influence on *FADS* expression was reported before for salmon

fed 1.5 g RSV per kg feed (32). This was in contrast to previous findings in trout fed 0.3% dry matter RSV (increased n3-PUFA but no effect on *FADS2*) and rat hepatocytes exposed to 50  $\mu$ M RSV (increased n3-PUFA in phospholipids) (30, 31), indicating potential species- and/or dose-specific effects.

It needs to be considered that concentrations of the test compounds, as used in the present cell culture study, were manifold higher than plasma concentrations reported in humans (72).

In conclusion, albeit application of 40  $\mu$ M RSV to human hepatocytes increased the expression of genes involved in n3-PUFA synthesis, levels of EPA and DHA were reduced. Resveratrol, furthermore, led to elevated amounts of stearic acid, a finding, which should be validated in studies in laboratory rodents and humans. RSV metabolites LUN and DHR did not show an impact on *FADS1* or *FADS2*.

## DATA AVAILABILITY

The raw data of this study may be requested of the corresponding author of this article.

## AUTHOR CONTRIBUTIONS

The experimental work was conducted by GK and BD-R under the supervision of KP, GR, and SdP-T. MB synthesized the test compound dihydro-resveratrol. The study was designed by GR, KP and CS. All authors contributed to the methods and interpretation of the results. The text was written by GK, KP, and GR and revised by the other authors. All authors have given approval to its final version.

## ACKNOWLEDGMENTS

We acknowledge financial support by Land Schleswig-Holstein within the funding programme Open Access Publikationsfonds. GK was kindly funded by a fellowship from the Wilhelm Schaumann foundation (Hamburg, Germany). SdP-T was funded by the Spanish MICINN through the grant AGL2016-76832-R.

## SUPPLEMENTARY MATERIAL

The Supplementary Material for this article can be found online at: <https://www.frontiersin.org/articles/10.3389/fnut.2018.00106/full#supplementary-material>

## REFERENCES

- DeFilippis AP, Sperling LS. Understanding omega-3's. *Am Heart J.* (2006) 151:564–70. doi: 10.1016/j.ahj.2005.03.051
- Zhao G, Etherton TD, Martin KR, West SG, Gillies PJ, Kris-Etherton PM. Dietary alpha-linolenic acid reduces inflammatory and lipid cardiovascular risk factors in hypercholesterolemic men and women. *J Nutr.* (2004) 134:2991–7. doi: 10.1093/jn/134.11.2991
- Arterburn LM, Oken HA, Hoffman JP, Bailey-Hall E, Chung G, Rom D, et al. Bioequivalence of Docosahexaenoic acid from different algal oils in capsules and in a DHA-fortified food. *Lipids* (2007) 42:1011–24. doi: 10.1007/s11745-007-3098-5
- Global Organization for EPA and DHA and Omega-3s. *Global Recommendations for EPA and DHA Intake*. Salt Lake City, UT (2015). p. 17.
- Zárate R, El Jaber-Vazdekis N, Tejera N, Pérez JA, Rodríguez C. Significance of long chain polyunsaturated fatty acids in human health. *Clin Transl Med.* (2017) 6:25. doi: 10.1186/s40169-017-0153-6
- FAO. (2016). *The State of World Fisheries and Aquaculture*. Rome: Food and Agriculture Organization of the United Nations.



7. Burr GO, Burr MM. Nutrition classics from The Journal of Biological Chemistry 82:345-67, 1929. a new deficiency disease produced by the rigid exclusion of fat from the diet. *Nutr Rev.* (1973) 31:248-9. doi: 10.1111/j.1753-4887.1973.tb06008.x
8. Rakhshandehroo M, Knoch B, Müller M, Kersten S. Peroxisome proliferator-activated receptor alpha target genes. *PPAR Res.* (2010) 2010:612089. doi: 10.1155/2010/612089
9. Buzzi M, Henderson RJ, Sargent JR. Biosynthesis of docosahexaenoic acid in trout hepatocytes proceeds via 24-carbon intermediates. *Comp Biochem Physiol B Biochem Mol Biol.* (1997) 116:263-7. doi: 10.1016/S0305-0491(96)00210-6
10. Leaver MJ, Bautista JM, Björnsson BT, Jönsson E, Krey G, Tocher DR, et al. Towards fish lipid nutrigenomics: current state and prospects for fin-fish aquaculture. *Rev Fish Sci.* (2008) 16:73-94. doi: 10.1080/10641260802325278
11. Sibbons CM, Brenna JT, Lawrence P, Hoile SP, Clarke-Harris R, Lillycrop KA, et al. Effect of sex hormones on n-3 polyunsaturated fatty acid biosynthesis in HepG2 cells and in human primary hepatocytes. *Prostaglandins Leukot Essent Fatty Acids* (2014) 90:47-54. doi: 10.1016/j.plefa.2013.12.006
12. Reardon HT, Hsieh AT, Park WJ, Kothapalli KSD, Anthony JC, Nathanielsz PW, et al. Dietary long-chain polyunsaturated fatty acids upregulate expression of FADS3 transcripts. *Prostaglandins Leukot Essent Fatty Acids* (2013) 88:15-9. doi: 10.1016/j.plefa.2012.02.003
13. Park WJ, Kothapalli KSD, Lawrence P, Tyburczy C, Brenna JT. An alternate pathway to long-chain polyunsaturates: the FADS2 gene product Delta8-desaturates 20:2n-6 and 20:3n-3. *J Lipid Res.* (2009) 50:1195-202. doi: 10.1194/jlr.M800630-JLR200
14. Monroig Ó, Tocher DR, Hontoria F, Navarro JC. Functional characterisation of a Fads2 fatty acyl desaturase with Δ6/Δ8 activity and an Elovl5 with C16, C18 and C20 elongase activity in the anadromous teleost meagre (*Argyrosomus regius*). *Aquaculture* (2013) 412-413:14-22. doi: 10.1016/j.aquaculture.2013.06.032
15. Stroud CK, Nara TY, Roqueta-Rivera M, Radlowski EC, Lawrence P, Zhang Y, et al. Disruption of FADS2 gene in mice impairs male reproduction and causes dermal and intestinal ulceration. *J Lipid Res.* (2009) 50:1870-80. doi: 10.1194/jlr.M900039-JLR200
16. Minghetti M, Leaver MJ, Tocher DR. Transcriptional control mechanisms of genes of lipid and fatty acid metabolism in the Atlantic salmon (*Salmo salar* L.) established cell line, SHK-1. *Biochim Biophys Acta* (2011) 1811:194-202. doi: 10.1016/j.bbap.2010.12.008
17. Yoshikawa T, Ide T, Shimano H, Yahagi N, Amemiya-Kudo M, Matsuzaka T, et al. Cross-talk between peroxisome proliferator-activated receptor (PPAR) alpha and liver X receptor (LXR) in nutritional regulation of fatty acid metabolism. I. PPARs suppress sterol regulatory element binding protein-1c promoter through inhibition of LXR signaling. *Mol Endocrinol.* (2003) 17:1240-54. doi: 10.1210/me.2002-0190
18. Baranowski M. Biological role of liver X receptors. *J Physiol Pharmacol.* (2008) 59(Suppl 7):31-55.
19. Xiaoping Z, Fajun Y. Regulation of SREBP-mediated gene expression. *Sheng Wu Wu Li Hsueh Bao* (2012) 28:287-94. doi: 10.3724/SP.J.1260.2012.20034
20. Jump DB, Tripathy S, Depner CM. Fatty acid-regulated transcription factors in the liver. *Annu Rev Nutr.* (2013) 33:249-69. doi: 10.1146/annurev-nutr-071812-161139
21. Nakamura MT, Nara TY. Gene regulation of mammalian desaturases. *Biochem Soc Trans.* (2002) 30:1076-9. doi: 10.1042/BST0301076
22. Garg ML, Clandinin MT. Alpha-linolenic acid and metabolism of cholesterol and long-chain fatty acids. *Nutrition* (1992) 8:208-10.
23. Menoyo D, López-Bote CJ, Obach A, Bautista JM. Effect of dietary fish oil substitution with linseed oil on the performance, tissue fatty acid profile, metabolism, and oxidative stability of Atlantic salmon. *J Anim Sci.* (2005) 83:2853-62. doi: 10.2527/2005.83122853x
24. Hector KL, Lagisz M, Nakagawa S. The effect of resveratrol on longevity across species: a meta-analysis. *Biol Lett.* (2012) 8:790-3. doi: 10.1098/rsbl.2012.0316
25. Bonnefont-Rousselot D. Resveratrol and cardiovascular diseases. *Nutrients* (2016) 8:8050250. doi: 10.3390/nu8050250
26. Mikulski D, Molski M. Quantitative structure-antioxidant activity relationship of trans-resveratrol oligomers, trans-4,4'-dihydroxystilbene dimer, trans-resveratrol-3-O-glucuronide, glucosides: trans-piceid, cis-piceid, trans-astringin and trans-resveratrol-4'-O-beta-D-glucopyranoside. *Eur J Med Chem.* (2010) 45:2366-80. doi: 10.1016/j.ejmech.2010.02.016
27. Pallauf K, Giller K, Huebbe P, Rimbach G. Nutrition and healthy ageing: calorie restriction or polyphenol-rich "mediterranean" diet? *Oxid Med Cell Longev.* (2013) 2013:707421. doi: 10.1155/2013/707421
28. Takizawa Y, Nakata R, Fukuhara K, Yamashita H, Kubodera H, Inoue H. The 4'-hydroxyl group of resveratrol is functionally important for direct activation of PPARα. *PLoS ONE* (2015) 10:e0120865. doi: 10.1371/journal.pone.0120865
29. Gnoni GV, Paglialonga G. Resveratrol inhibits fatty acid and triacylglycerol synthesis in rat hepatocytes. *Eur J Clin Invest.* (2009) 39:211-8. doi: 10.1111/j.1365-2362.2008.02077.x
30. Momchilova A, Petkova D, Staneva G, Markovska T, Pankov R, Skrobanska R, et al. Resveratrol alters the lipid composition, metabolism and peroxide level in senescent rat hepatocytes. *Chem Biol Interact.* (2014) 207:74-80. doi: 10.1016/j.cbi.2013.10.016
31. Torno C, Staats S, Pascual-Teresa SD, Rimbach G, Schulz C. Fatty acid profile is modulated by dietary resveratrol in rainbow trout (*Oncorhynchus mykiss*). *Mar Drugs* (2017) 15:15080252. doi: 10.3390/md15080252
32. Menoyo D, Kühn G, Ruiz-Lopez N, Pallauf K, Stubhaug I, Pastor JJ, et al. Dietary resveratrol impairs body weight gain due to reduction of feed intake without affecting fatty acid composition in Atlantic salmon. *Animal* (2018) 114-115:1-8. doi: 10.1017/S1751731118000812
33. Bode LM, Bunzel D, Huch M, Cho G-S, Ruhland D, Bunzel M, et al. *In vivo* and *in vitro* metabolism of trans-resveratrol by human gut microbiota. *Am J Clin Nutr.* (2013) 97:295-309. doi: 10.3945/ajcn.112.049379
34. Anisimova NY, Kiselevsky MV, Sosnov AV, Sadovnikov SV, Stankov IN, Gakh AA. Trans-, cis-, and dihydro-resveratrol: a comparative study. *Chem Cent J.* (2011) 5:88. doi: 10.1186/1752-153X-5-88
35. Azorin-Ortuño M, Yáñez-Gascón MJ, González-Sarriás A, Larrosa M, Vallejo F, Pallarés FJ, et al. Effects of long-term consumption of low doses of resveratrol on diet-induced mild hypercholesterolemia in pigs: a transcriptomic approach to disease prevention. *J Nutr Biochem.* (2012) 23:829-37. doi: 10.1016/j.jnutbio.2011.04.007
36. Faragher RGA, Burton DGA, Majecka P, Fong NSY, Davis T, Sheerin A, et al. Resveratrol, but not dihydroresveratrol, induces premature senescence in primary human fibroblasts. *Age* (2011) 33:555-64. doi: 10.1007/s11357-010-9201-5
37. Wagner AE, Huck G, Stiehl DP, Jelkmann W, Hellwig-Bürgel T. Dexamethasone impairs hypoxia-inducible factor-1 function. *Biochem Biophys Res Commun.* (2008) 372:336-40. doi: 10.1016/j.bbrc.2008.05.061
38. Borenfreund E, Puerner JA. A simple quantitative procedure using monolayer cultures for cytotoxicity assays (HTD/NR-90). *J Tissue Cult Methods* (1985) 9:7-9. doi: 10.1007/BF01666038
39. Spandidos A, Wang X, Wang H, Seed B. PrimerBank: a resource of human and mouse PCR primer pairs for gene expression detection and quantification. *Nucleic Acids Res.* (2010) 38:D792-9. doi: 10.1093/nar/gkp1005
40. Schloesser A, Campbell G, Glüer C-C, Rimbach G, Huebbe P. Restriction on an energy-dense diet improves markers of metabolic health and cellular aging in mice through decreasing hepatic mTOR activity. *Rejuvenation Res.* (2015) 18:30-9. doi: 10.1089/rej.2014.1630
41. Vauzour D, Tejera N, O'Neill C, Booz V, Jude B, Wolf IMA, et al. Anthocyanins do not influence long-chain n-3 fatty acid status: studies in cells, rodents and humans. *J Nutr Biochem.* (2015) 26:211-8. doi: 10.1016/j.jnutbio.2014.09.005
42. R-Core-Team, T. *A Language and Environment for Statistical Computing.* Vienna (2015).
43. Laird NM, Ware JH. Random-effects models for longitudinal data. *Biometrics* (1982) 38:963-74.
44. Verbeke G, Molenberghs G. *Linear Mixed Models for Longitudinal Data.* New York, NY: Springer (2000).
45. Nakagawa S, Schielzeth H, O'Hara RB. A general and simple method for obtaining R2 from generalized linear mixed-effects models. *Methods Ecol Evol.* (2013) 4:133-42. doi: 10.1111/j.2041-210x.2012.00261.x
46. Bretz F, Westfall PH, Hothorn T. *Multiple Comparisons Using R.* Boca Raton, FL: Chapman and Hall/CRC (2010).
47. Bourassa P, Kanakis CD, Tarantilis P, Pollisiou MG, Tajmir-Riahi HA. Resveratrol, genistein, and curcumin bind bovine serum albumin. *J Phys Chem B* (2010) 114:3348-54. doi: 10.1021/jp9115996

48. Stivala LA, Savio M, Carafoli F, Perucca P, Bianchi L, Maga G, et al. Specific structural determinants are responsible for the antioxidant activity and the cell cycle effects of resveratrol. *J Biol Chem.* (2001) 276:22586–94. doi: 10.1074/jbc.M101846200
49. Rao YPC, Lokesh BR. Modulatory effects of alpha-linolenic acid on generation of reactive oxygen species in elaidic acid enriched peritoneal macrophages in rats. *Indian J Exp Biol.* (2014) 52:860–9.
50. Cho HP, Nakamura MT, Clarke SD. Cloning, expression, and nutritional regulation of the mammalian  $\Delta$ -6 desaturase. *J Biol Chem.* (1999) 274:471–7. doi: 10.1074/jbc.274.1.471
51. Sprecher H, Lee CJ. The absence of an 8-desaturases in rat liver: a reevaluation of optional pathways for the metabolism of linoleic and linolenic acids. *Biochim Biophys Acta* (1975) 388:113–25. doi: 10.1016/0005-2760(75)90067-3
52. Lopaschuk GD, Ussher JR, Folmes CDL, Jaswal JS, Stanley WC. Myocardial fatty acid metabolism in health and disease. *Physiol Rev.* (2010) 90:207–58. doi: 10.1152/physrev.00015.2009
53. Shimoda H, Tanaka J, Kikuchi M, Fukuda T, Ito H, Hatano T, et al. Effect of polyphenol-rich extract from walnut on diet-induced hypertriglyceridemia in mice via enhancement of fatty acid oxidation in the liver. *J Agric Food Chem.* (2009) 57:1786–92. doi: 10.1021/jf803441c
54. Sheaff Greiner RC, Zhang Q, Goodman KJ, Giussani DA, Nathanielsz PW, Brenna JT. Linoleate, alpha-linolenate, and docosahexaenoate recycling into saturated and monounsaturated fatty acids is a major pathway in pregnant or lactating adults and fetal or infant rhesus monkeys. *J Lipid Res.* (1996) 37:2675–86.
55. Burdge GC, Wootton SA. Conversion of  $\alpha$ -linolenic acid to palmitic, palmitoleic, stearic and oleic acids in men and women. *Prostaglandins Leukot Essent Fatty Acids* (2003) 69:283–90. doi: 10.1016/S0952-3278(03)00111-X
56. Smith S. The animal fatty acid synthase: One gene, one polypeptide, seven enzymes. *FASEB J.* (1994) 8:1248–59. doi: 10.1096/fasebj.8.15.8001737
57. Keys A, Anderson JT, Grande F. Serum cholesterol response to changes in the diet. *Metabolism* (1965) 14:776–87. doi: 10.1016/0026-0495(65)90004-1
58. Milanski M, Degasperi G, Coope A, Morari J, Denis R, Cintra DE, et al. Saturated fatty acids produce an inflammatory response predominantly through the activation of TLR4 signaling in hypothalamus: implications for the pathogenesis of obesity. *J Neurosci.* (2009) 29:359–70. doi: 10.1523/JNEUROSCI.2760-08.2009
59. Bajracharya R, Bustamante S, Ballard JWO. Stearic acid supplementation in high protein to carbohydrate (P:C) ratio diet improves physiological and mitochondrial functions of *Drosophila melanogaster* parkin null mutants. *J Gerontol A Biol Sci Med Sci.* (2017). doi: 10.1093/gerona/glx246. [Epub ahead of print].
60. Shen M-C, Zhao X, Siegal GP, Desmond R, Hardy RW. Dietary stearic acid leads to a reduction of visceral adipose tissue in athymic nude mice. *PLoS ONE* (2014) 9:e104083. doi: 10.1371/journal.pone.0104083
61. Feldman EB, Russell BS, Schnare FH, Moretti-Rojas I, Miles BC, Doyle EA. Effects of diets of homogeneous saturated triglycerides on cholesterol balance in rats. *J Nutr.* (1979) 109:2237–46. doi: 10.1093/jn/109.12.2237
62. Perreault M, Roke K, Badawi A, Nielsen DE, Abdelmagid SA, El-Sohemy A, et al. Plasma levels of 14:0, 16:0, 16:1n-7, and 20:3n-6 are positively associated, but 18:0 and 18:2n-6 are inversely associated with markers of inflammation in young healthy adults. *Lipids* (2014) 49:255–63. doi: 10.1007/s11745-013-3874-3
63. Samsami-Kor M, Daryani NE, Asl PR, Hekmatdoost A. Anti-inflammatory effects of resveratrol in patients with ulcerative colitis: a randomized, double-blind, placebo-controlled pilot study. *Arch Med Res.* (2015) 46:280–5. doi: 10.1016/j.arcmed.2015.05.005
64. Moussa C, Hebron M, Huang X, Ahn J, Rissman RA, Aisen PS, et al. Resveratrol regulates neuro-inflammation and induces adaptive immunity in Alzheimer's disease. *J Neuroinflamm.* (2017) 14:1. doi: 10.1186/s12974-016-0779-0
65. Hunter JE, Zhang J, Kris-Etherton PM. Cardiovascular disease risk of dietary stearic acid compared with trans, other saturated, and unsaturated fatty acids: a systematic review. *Am J Clin Nutr.* (2010) 91:46–63. doi: 10.3945/ajcn.2009.27661
66. Di Renzo L, Marsella LT, Carraro A, Valente R, Gualtieri P, Gratteri S, et al. Changes in LDL oxidative status and oxidative and inflammatory gene expression after red wine intake in healthy people: a randomized trial. *Mediators Inflamm.* (2015) 2015:317348. doi: 10.1155/2015/317348
67. Ali MHH, Messiha BAS, Abdel-Latif HA-T. Protective effect of ursodeoxycholic acid, resveratrol, and N-acetylcysteine on nonalcoholic fatty liver disease in rats. *Pharm Biol.* (2016) 54:1198–208. doi: 10.3109/13880209.2015.1060247
68. Jin X-J, Kim EJ, Oh IK, Kim YK, Park C-H, Chung JH. Prevention of UV-induced skin damages by 11,14,17-eicosatrienoic acid in hairless mice *in vivo*. *J Korean Med Sci.* (2010) 25:930–7. doi: 10.3346/jkms.2010.25.6.930
69. Chen S-J, Chuang L-T, and Chen S-N. Incorporation of eicosatrienoic acid exerts mild anti-inflammatory properties in murine RAW264.7 cells. *Inflammation* (2015) 38:534–45. doi: 10.1007/s10753-014-9960-8
70. Pamplona R, Portero-Otin M, Riba D, Ruiz C, Prat J, Bellmunt MJ, et al. Mitochondrial membrane peroxidizability index is inversely related to maximum life span in mammals. *J Lipid Res.* (1998) 39:1989–94.
71. Inoue H, Jiang X-F, Katayama T, Osada S, Umesono K, Namura S. Brain protection by resveratrol and fenofibrate against stroke requires peroxisome proliferator-activated receptor  $\alpha$  in mice. *Neurosci Lett.* (2003) 352:203–6. doi: 10.1016/j.neulet.2003.09.001
72. Walle T. Bioavailability of resveratrol. *Ann N Y Acad Sci.* (2011) 1215:9–15. doi: 10.1111/j.1749-6632.2010.05842.x

**Conflict of Interest Statement:** CS was employed by Gesellschaft für Marine Aquakultur mbH (Büsum, Germany).

The remaining authors declare that the research was conducted in the absence of any commercial or financial relationships that could be construed as a potential conflict of interest.

Copyright © 2018 Kühn, Pallauf, Schulz, Birringer, Diaz-Rica, de Pascual-Teresa and Rimbach. This is an open-access article distributed under the terms of the Creative Commons Attribution License (CC BY). The use, distribution or reproduction in other forums is permitted, provided the original author(s) and the copyright owner(s) are credited and that the original publication in this journal is cited, in accordance with accepted academic practice. No use, distribution or reproduction is permitted which does not comply with these terms.