

Globotriaosylceramide-Related Biomarkers of Fabry Disease Identified in Plasma by High-Performance Thin-Layer Chromatography - Densitometry- Mass Spectrometry

Carmen Jarne ^a, Luis Membrado ^a, María Savirón ^b, Jesús Vela ^c, Jesús Orduna ^b, Rosa Garriga ^d, Javier Galbán ^c, Vicente L. Cebolla ^a

Supporting information

Figure S1.- A) HPTLC-ESI⁺-MS, and **B)** HPTLC-APCI⁺-MS spectra of peak at migration distance (m.d.) 127.9 mm (in Figure 3) from the healthy control plasma extract.

Figure S2.- HPTLC-APCI⁺-MS spectrum of peak at migration distance (m.d.) 27.9 mm (in Figure 3) from the Fabry's plasma extract.

Figure S3.- Detail of HPTLC-ESI⁺-MS spectrum of peak at migration distance (m.d.) 14.5 mm from the healthy control sample. (In the box, the peak zone drilled by the interface head). Ampliation of low-intensity ions by window restriction to the range of $m/z > 1000$. Unsaturated Gb₃ species (black); methylated Gb₃ species (red). For ion interpretation, please see Table 2.

Figure S4.-HPTLC-APCI⁺-MS spectrum of peak at migration distance (m.d.) 14.5 mm from the healthy control plasma sample. **A)** m/z 970-1260 range. **B)** m/z 680-800 range. For interpretation, please see text.

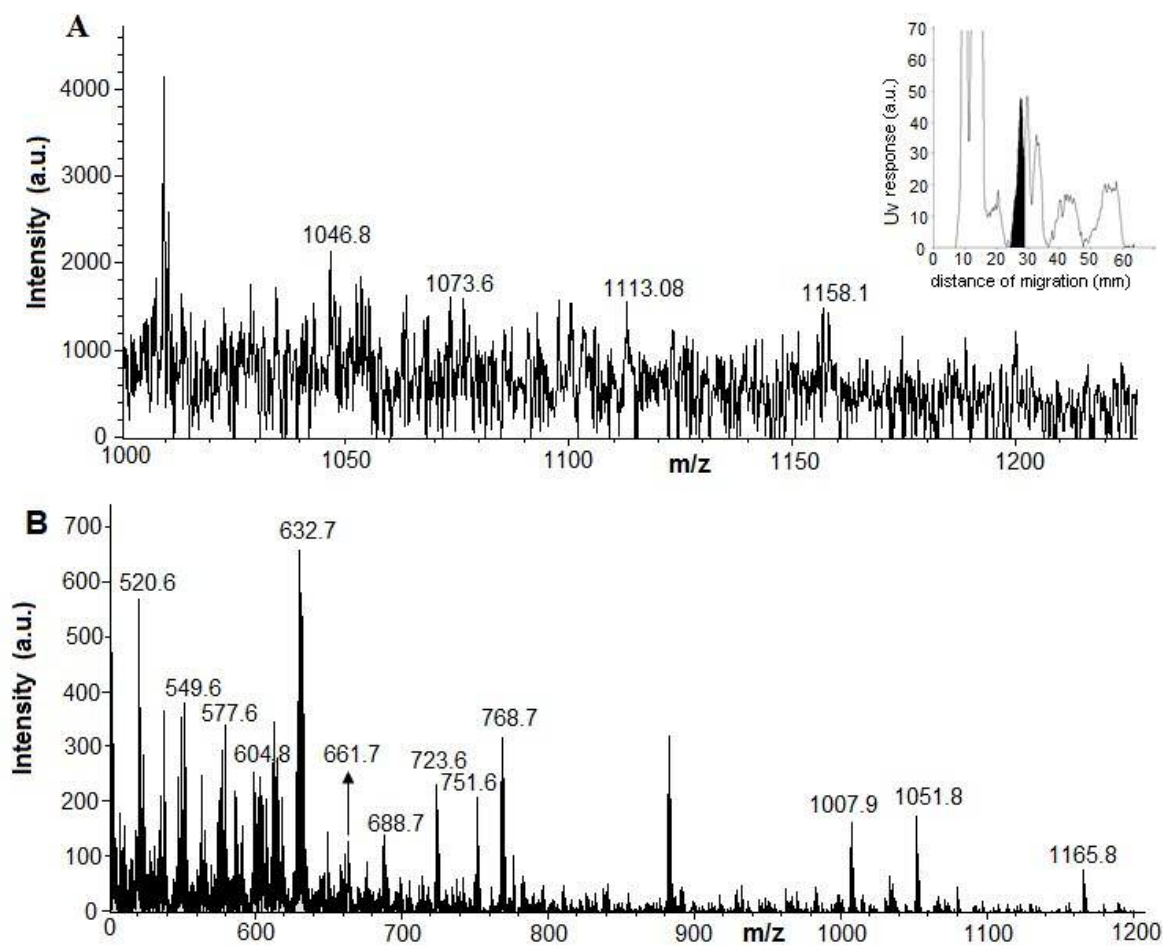


Figure S1.- A) HPTLC-ESI⁺-MS, and B) HPTLC-APCI⁺-MS spectra of peak at migration distance (m.d.) 127.9 mm (in Figure 3) from the healthy control plasma extract.

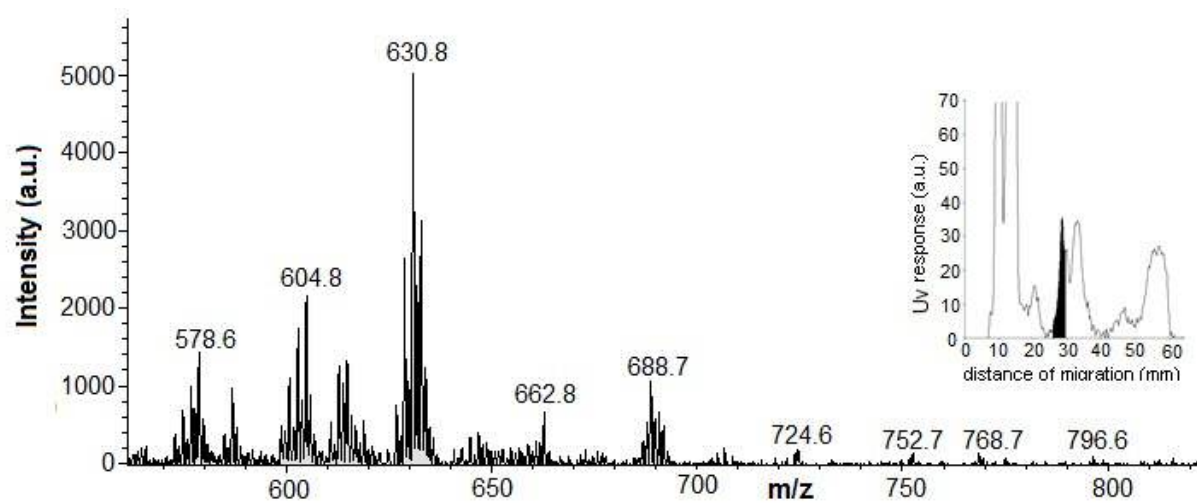


Figure S2.- HPTLC-APCI⁺-MS spectrum of peak at migration distance (m.d.) 27.9 mm (in Figure 3) from the Fabry's plasma extract.

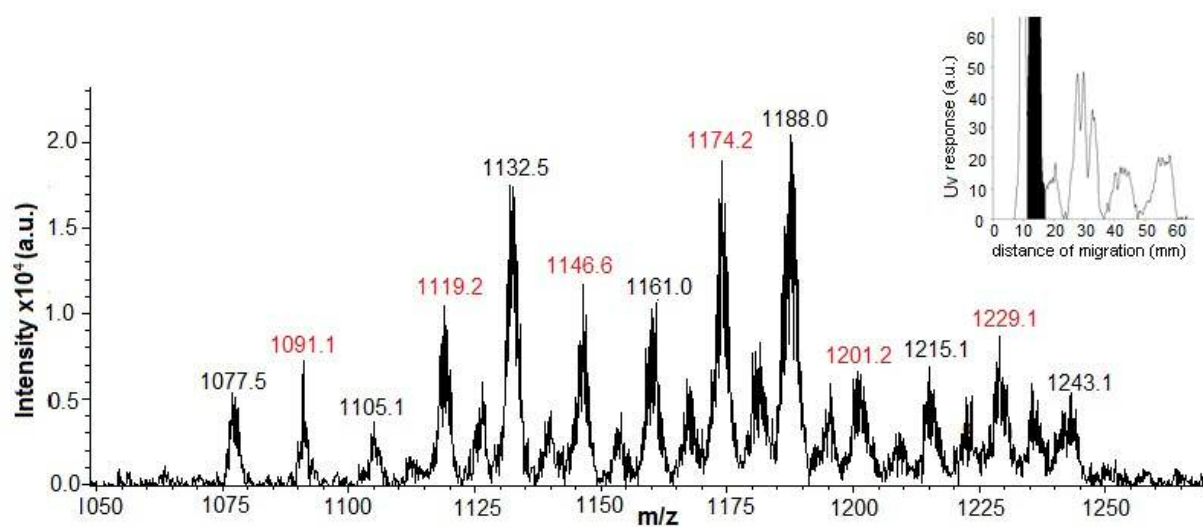


Figure S3.- Detail of HPTLC-ESI⁺-MS spectrum of peak at migration distance (m.d.) 14.5 mm from the healthy control sample. (In the box, the peak zone drilled by the interface head). Ampliation of low-intensity ions by window restriction to the range of $m/z > 1000$. Unsaturated Gb₃ species (black); methylated Gb₃ species (red). For ion interpretation, please see Table 2.

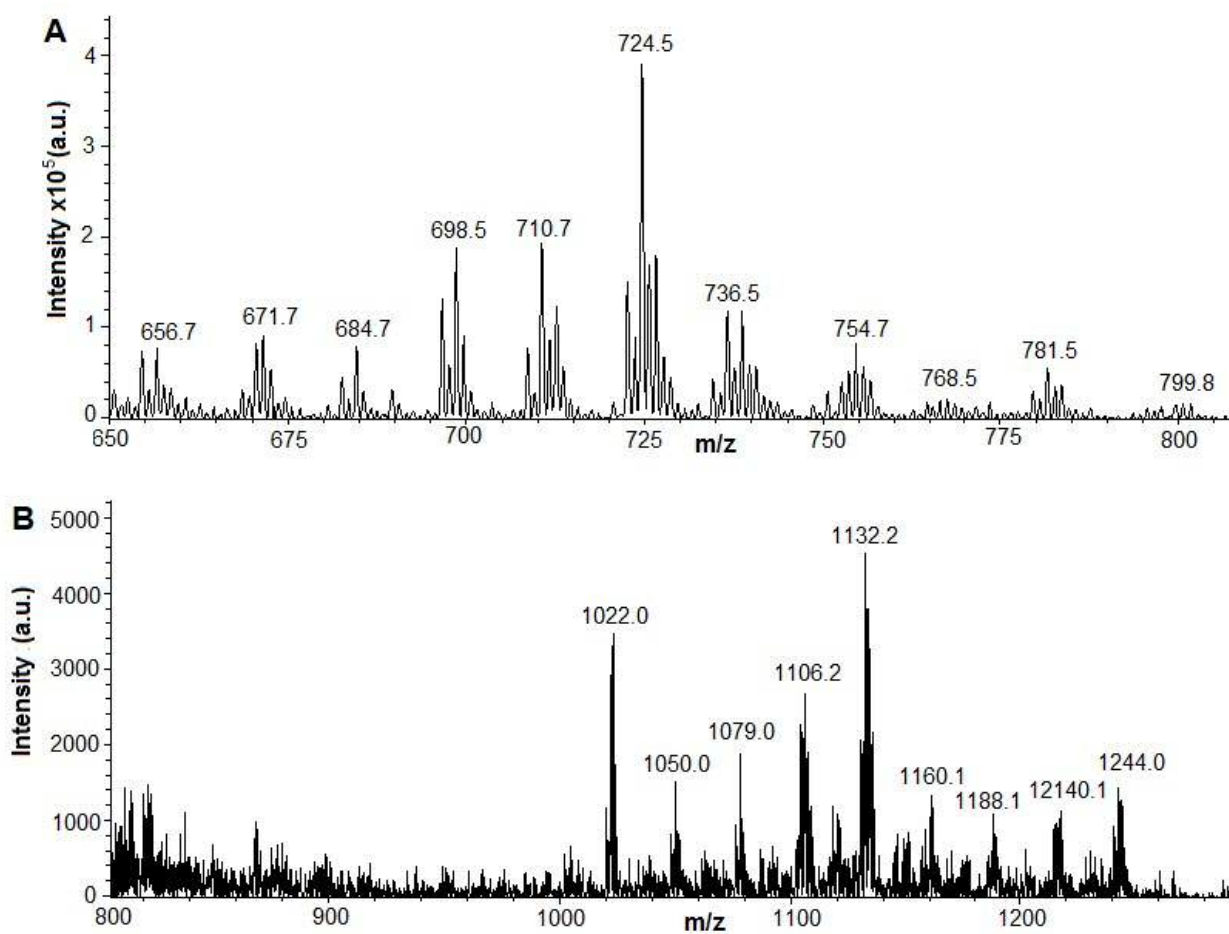


Figure S4.-HPTLC-APCI⁺-MS spectrum of peak at migration distance (m.d.) 14.5 mm from the healthy control plasma sample. **A)** *m/z* 970-1260 range. **B)** *m/z* 680-800 range. For interpretation, please see text.