

Seismic Study of the Iberian Crust, ESCI-North survey



A normal incidence reflection profile to image the Variscan and Alpine structures in the NW of Spain.

General information

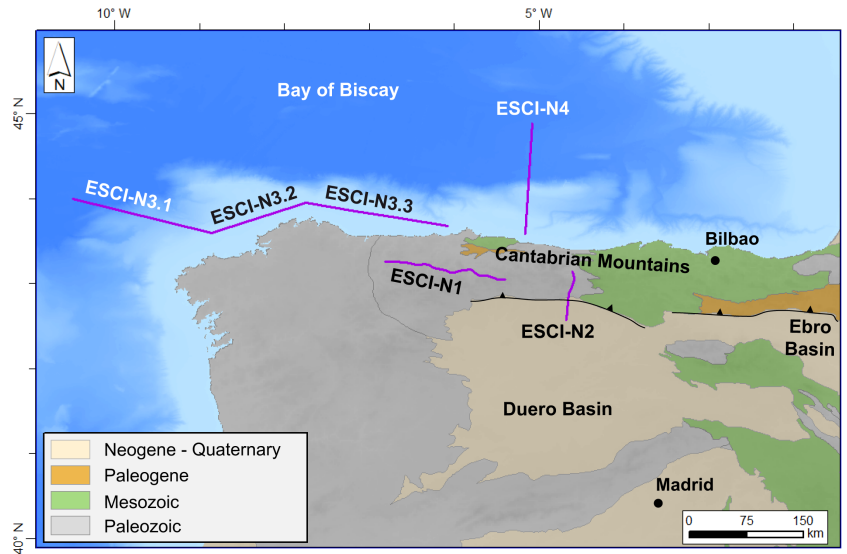
- 4 seismic reflection profiles onshore and offshore.
- Acquired between 1991 and 1993.
- Total length of ca. 725 km.
- File format: SEGY

Technical specifications

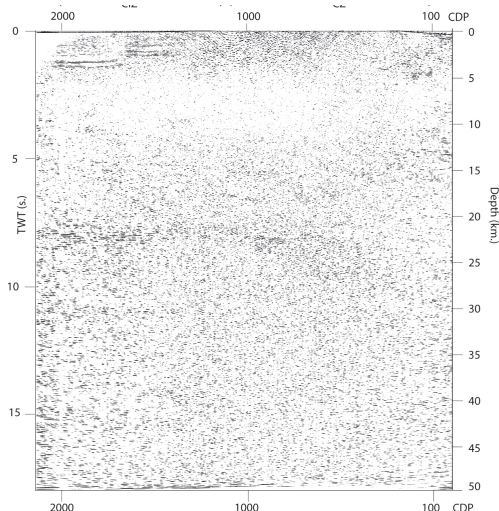
- Streamer length: 14500 m
- Number of channels: 240
- Group interval: 60 m
- Record length: between 20 and 25 s
- Shot interval: 240 m
- Source: 20 kg dynamite
- Sample rate: 4 ms

Setting

- NW of Spain.
- Galicia Margin, Cantabrian Mountains and North Iberian Margin.



Example of the data: ESCI-N2



Main references

- Álvarez-Marrón et al. (1996). [https://doi.org/10.1016/S0040-1951\(96\)00124-2](https://doi.org/10.1016/S0040-1951(96)00124-2)
- Ayarza et al. (2004). doi:10.1029/2002TC001487.
- Gallastegui et al. (1997). [https://doi.org/10.1016/S0040-1951\(96\)00166-7](https://doi.org/10.1016/S0040-1951(96)00166-7)
- Pérez-Estaún et al. (2019). Dataset: <http://dx.doi.org/10.20350/digitalCSIC/9894>
- Pulgar et al. (1995). Rev. Soc. Geol. España, 8(4), 383-394.

Funding:

- CICYT: GEO90-660
- FICYT
- Science and Technology for Regional Innovation and Development in Europe.