

Characterization of the 3D internal structure of the Alhama de Murcia Fault

General information

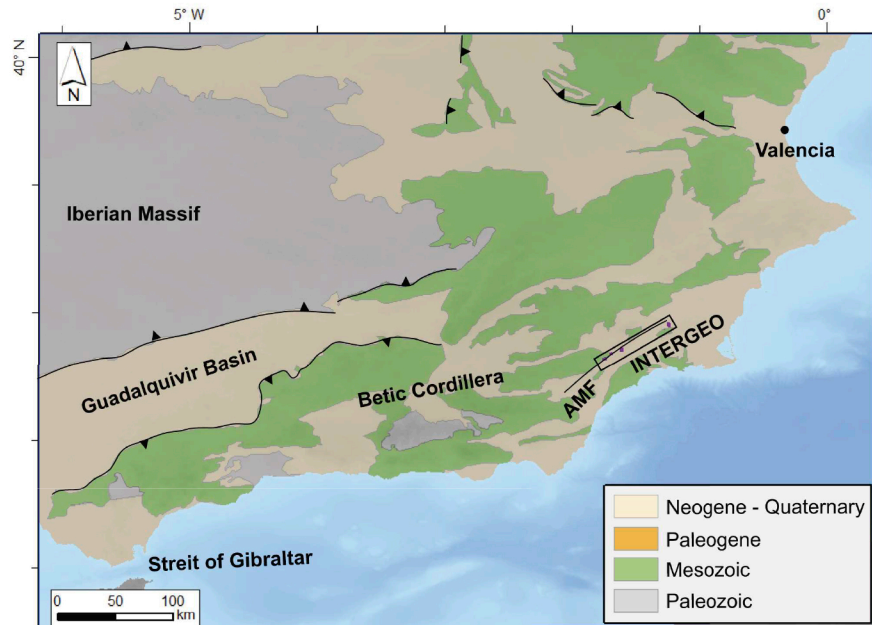
- Six seismic reflection profiles.
- Acquired in 2015.
- Total length of 13 km.
- File format: SEG Y

Technical specifications

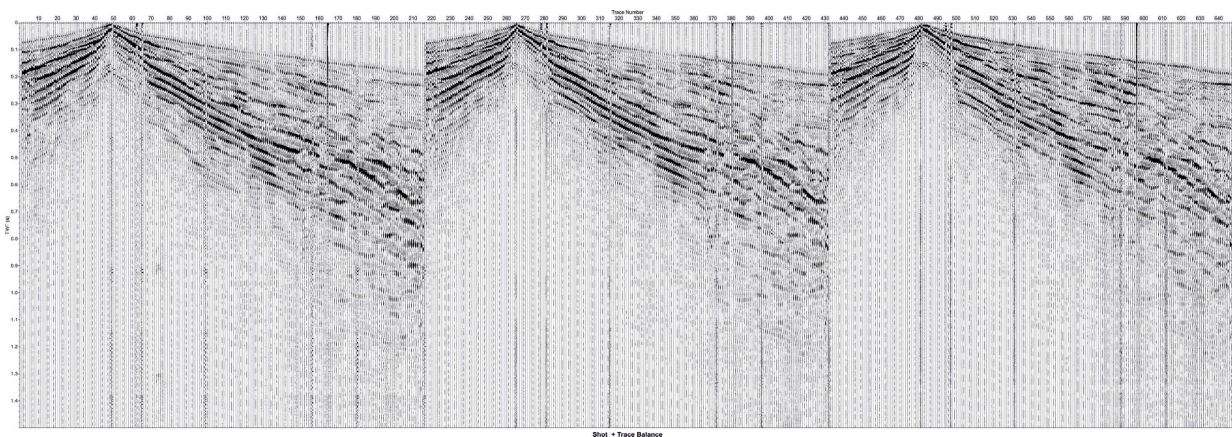
- Receiver number: 240
- Receiver interval: 2 m
- Source interval: 6 m
- Source: accelerated weighdrop (250 kg)
- Record time: 4 s
- Sample rate: 1 ms

Setting

- SE of Spain (Murcia).



Example of the data:



Main references:

- Ardanaz et al. (2018). https://iberfault.org/wp-content/uploads/2018/11/volumen-comunicaciones-IF18_web.pdf
- Gascón et al. (2016). *GeoTemas* 16(1), 515-518
- Martí et al. (2015). Dataset: <http://dx.doi.org/10.20350/digitalCSIC/8632>

Funding:

- Ministry of economy and competitiveness CGL2013-47412-C2-1-P