



MINISTERIO
DE ECONOMÍA
Y COMPETITIVIDAD

isciii
Instituto
de Salud
Carlos III

The Research Infrastructures Programme and its NCP Network RICH

Laura Mohedano

lmohedano@eu-isciii.es

Instituto de Salud Carlos III, Spain

Brussels, October 20th , 2015

Research Infrastructures Horizon2020

- Research infrastructures are **facilities, resources and services** that are used by the research communities to conduct research and foster innovation.
- Can be single-sited, distributed or virtual
- E.g. telescopes, accelerators, research vessels, coastal observatories, natural habitats, knowledge based resources, collections, archives, etc
- The definition includes e-infrastructure: structured information systems related data management, enabling information and communication; technology- based infrastructures: grid, computing, software and middleware

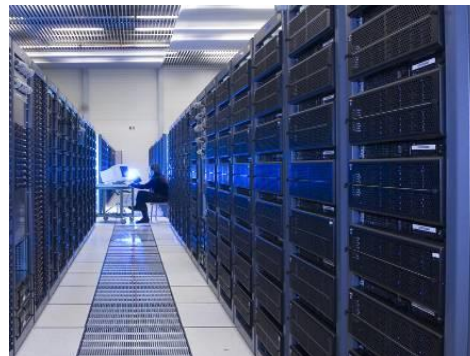


Knowledge-based resources

e-infrastructure

Major scientific equipments

Examples of Research Infrastructures



Why an EU approach for Research Infrastructures?

- To **open access** to the research infrastructures existing in the individual Member State to all European researchers
- To **avoid duplication of efforts** and to coordinate and rationalise **the use** of these research infrastructures
- To trigger the **exchange of best practice**, develop interoperability of facilities and resources, develop the training of the next generation of researchers
- To **connect national research communities** and increase the overall quality of the research and innovation
- To help **pooling resources** so that the Union can also acquire and operate research infrastructures globally

Horizon 2020– Framework Programme for Research and Innovation (2014-2020)

Excellent science

- European Research Council
- Future and Emerging Technologies
- Marie Curie actions
- **European Research infrastructures (including e-infrastructures) – 2,488 M€**

Societal challenges

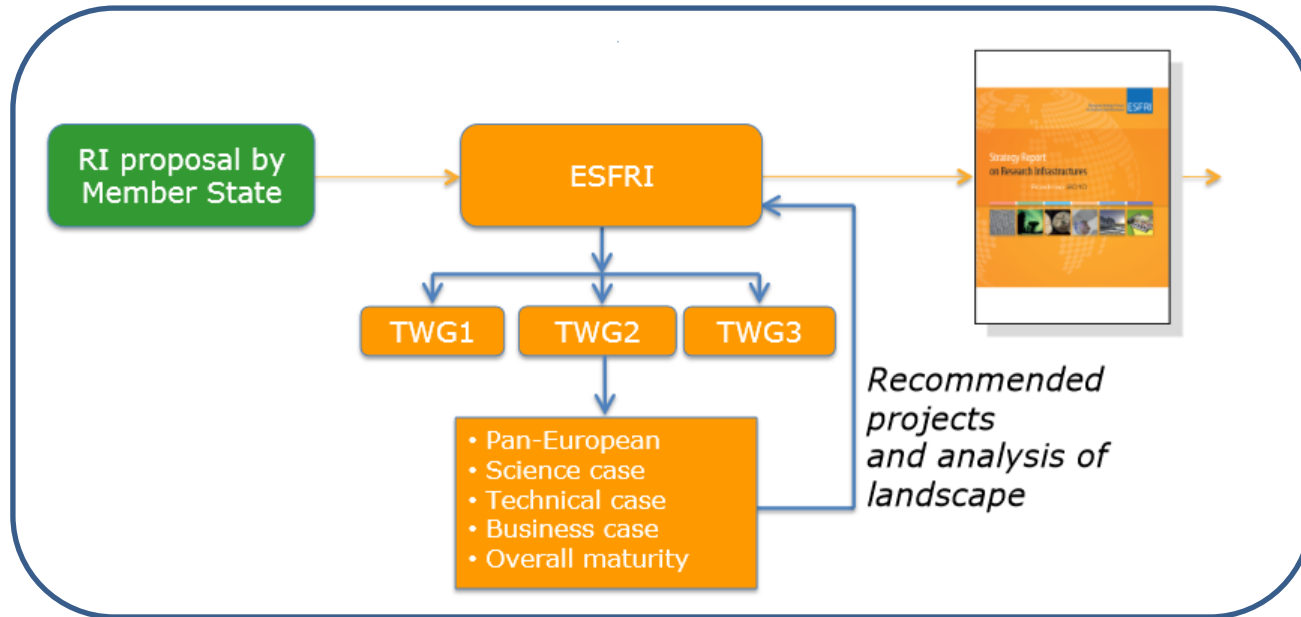
- Health, demographic change, wellbeing
 - Food security, sustainable agriculture, marine -maritime research, bio-economy
 - Secure, clean and efficient energy
 - Smart, green, integrated transport
 - Climate action, resource efficiency, raw materials
 - Inclusive, innovative and reflective societies
 - Secure societies
- Spreading excellence & Widening Participation
- Science with and For Society

Industrial leadership

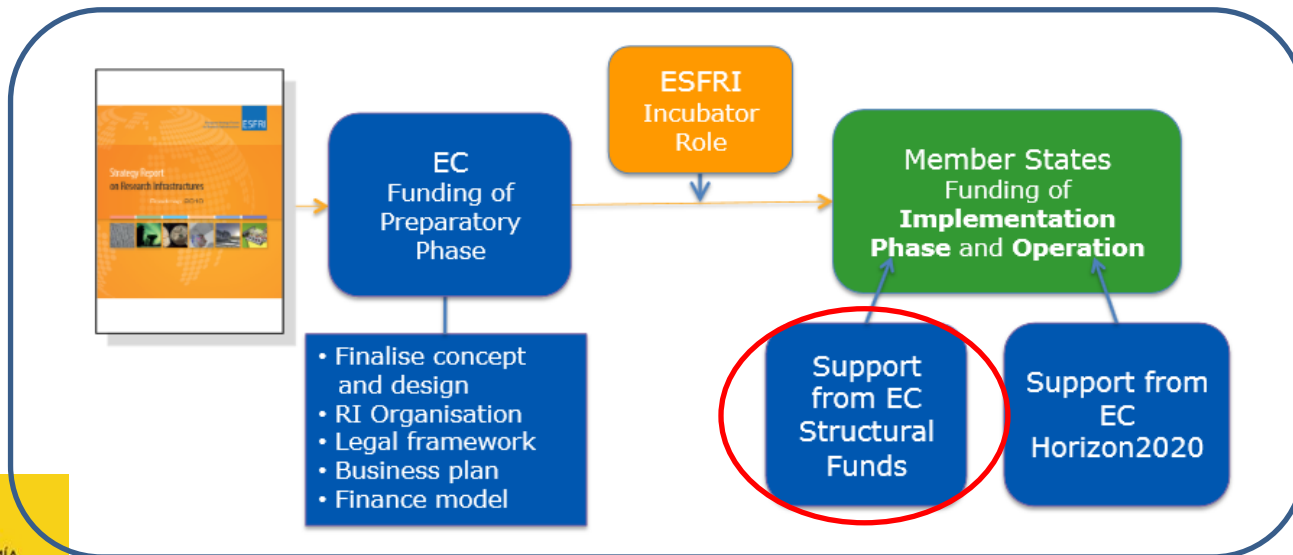
- Leadership in enabling and industrial technologies (ICT, space, nanotechnologies, advanced materials and advanced manufacturing and processing, biotechnology)
- Access to risk finance
- Innovation in SMEs

ESFRI: European Strategy Forum on Research Infrastructures

1.



2.



Synergies between ESIF and H2020 for Research Infrastructures

- The Innovation Union included a commitment to complete or launch construction by **2015** of **60%** of the ESFRI roadmap priority Research Infrastructures of pan-European interest. This requires investments beyond the means of individual countries – **pooling of regional, national and European Union funds is thus necessary.**
- Member States are requested to **link national research infrastructure roadmaps** to the **ESFRI roadmap** and **Smart Specialisation Strategies** in order to have the possibility of using **Structural Funds**
- There are some conditions and/or constraints for the use of the Structural Funds:

✓ **Smart Specialisation
ex-ante conditionality**
✓ **Thematic Concentration**
(both under Cohesion policy)

Examples of Synergies

1. ELI – Extreme Light Infrastructure

The logo for ELI (Extreme Light Infrastructure) features the letters 'eli' in a lowercase, sans-serif font. The 'e' and 'l' are black, while the 'i' is red.The logo for beamlines features a stylized red graphic of five vertical, slightly curved lines above the word 'beamlines' in a lowercase, sans-serif font.

Initiated in 2005 and listed on the ESFRI roadmap of priority pan-European RI, ELI is pioneering a novel funding model combining a **€6-million FP7 grant for the preparation of the project (2007-2010)** with the use of **structural funds (until 2017) for the implementation** and **national contributions** to a pan-European consortium (ERIC) for the **future operation**.



In this case, Structural funds represent an opportunity for the development of research infrastructures and scientific communities in the newer Member States of the EU. The availability of structural funds (**in total about €850 million allocated to ELI**) in the hosting countries facilitated the site decision and a swift transition towards implementation

RICH: European Network of National Contact Points for Research Infrastructures programme for Horizon 2020

- ✓ Started January 2015 (4 years)
- ✓ Facilitates transnational cooperation between NCPs
- ✓ Promotes the effective implementation of the RI programme
- ✓ Supports transnational and virtual access to RIs and highlights the opportunities offered by Research Infrastructures

The Network builds on the experience of previous networks of National Contact Points for the Research Infrastructures programme (FP7: EuroRIs-Net and EuroRIs-Net+, 2007-2013).



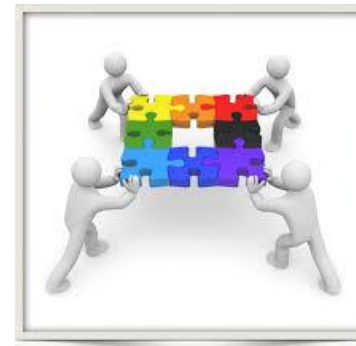


RICH Objective

The specific objective of **RICH** (**R**esearch **I**nfrastructures **C**onsortium for **H**orizon 2020) is to **facilitate trans-national co-operation between NCPs** for research infrastructures with a view to **identifying and sharing good practices** and raising the general standard of **support to programme applicants**, taking into account the **diversity of actors** that make up the constituency of the **Research Infrastructures Programme**

Three main fields of activities:

- 1. Capacity building;**
- 2. Mutual learning;**
- 3. Interaction with stakeholders**



WP1: Project management - WP Leader: APRE (Italy)

- ✓ Management and a punctual administrative and financial management
- ✓ Communication within the Consortium and towards the European Commission,
- ✓ Liaison Officer takes care of the communication with the Associated NCPs

WP2: Capacity Building - WP Leader: FCT (Portugal)

- ✓ Assessment of the skills in order to fine tune the training
- ✓ Activities and triplings organised within the work package
- ✓ Three different types of training are foreseen in order to cover the main H2020 aspects:
 - Basic for new comers: “Becoming RICH welcome pack”
 - Advanced for the whole network “Open training” on specific RIs issues
 - Legal and Financial aspects in collaboration with the NCP Academy

WP3: Dialogue with RIs Ecosystem - WP Leader: GSRT (Greece)

- ✓ Widen the relationships between major RIs players (ESFRI, Structural Funds managers, Smart Specialization Strategy stakeholders, national and regional authorities).
 - organisation of EU Symposia and infodays
 - closer contacts and knowledge of global RIs and TAS users

WP4: Communication and Dissemination - WP Leader: STIS (Belgium)

- ✓ Raising awareness among the RIs stakeholders about the project services and support given by the NCPs in their own countries
- ✓ Promotion of TAS opportunities.

RICH Consortium

- ✓ 11 partners
- ✓ Mixture of “new comers” and “experience” NCPs
- ✓ All partners at least leader of one Task
- ✓ All partners institutions have an officially appointed RIs NCPs

| Beneficiary Number | Beneficiary name | Beneficiary short name | Country |
|--------------------|---|------------------------|---------|
| 1 | Agenzia per la Promozione della Ricerca Europea | APRE | IT |
| 2 | Fundação para a Ciência e a Tecnologia | FCT | PT |
| 3 | ETHNIKO IDRYMA EREVNON | EKT/NHRF | GR |
| 4 | Service d'information scientifique et technique | STIS | BE |
| 5 | Österreichische Forschungsförderungsgesellschaft | FFG | AT |
| 6 | Deutsches Zentrum für Luft- und Raumfahrt | DLR | DE |
| 7 | Instytut Podstawowych Problemów Techniki Polskiej Akademii Nauk | IPPT-PAN | PL |
| 8 | Verein Euresearch | Euresearch | CH |
| 9 | Commissariat à l'Énergie Atomique et aux Énergies alternatives | CEA | FR |
| 10 | Technology Centre ASCR | TC ASCR | CZ |
| 11 | Instituto de Salud Carlos III | ISCIII | ES |



HOME ABOUT RICH SERVICES NEWS & EVENTS RIS LIBRARY CONTACT



Research infrastructure (incl. e-Infrastructure) Workprogramme 2016-2017

Horizon 2020 Info Day - 28th October 2015, Brussels

To support the preparation of proposals, **RICH, the network of National Contact Points for Research Infrastructures**, in cooperation with the European Commission's Research and Innovation Directorate-General, is organising an Information Day on **Wednesday 28 October 2015 in Brussels**.

The aim of the day is to inform potential participants in the new Work Programme 2016/2017 and to offer some unique opportunities for networking.

The morning plenary session will focus on the content of the INFRA calls 2016-2017, give information on the legal and financial Rules for Participation and also providing guidance on

List of Services

- H2020 Calls information ▶
- Transnational Access & Services calls ▶
- Learning about RIS ▶
- Frequently Asked Questions ▶
- Promoting RIS ▶
- International Cooperation on RIS ▶
- Linking with other programmes ▶

RICH 2020 Coordinator

Manny thanks for your attention and the invitation!!

