

RESEARCH

Open Access



# Screening and purification of nanobodies from *E. coli* culture supernatants using the hemolysin secretion system

David Ruano-Gallego<sup>1†</sup>, Sofía Fraile<sup>1†</sup>, Carlos Gutierrez<sup>2</sup> and Luis Ángel Fernández<sup>1\*</sup> 

## Abstract

**Background:** The hemolysin (Hly) secretion system of *E. coli* allows the one-step translocation of hemolysin A (HlyA) from the bacterial cytoplasm to the extracellular medium, without a periplasmic intermediate. In this work, we investigate whether the Hly secretion system of *E. coli* is competent to secrete a repertoire of functional single-domain VHH antibodies (nanobodies, Nbs), facilitating direct screening of VHH libraries and the purification of selected Nb from the extracellular medium.

**Results:** We employed a phagemid library of VHHs obtained by immunization of a dromedary with three protein antigens from enterohemorrhagic *E. coli* (EHEC), namely, the extracellular secreted protein A (EspA), the extracellular C-terminal region of Intimin (Int280), and the translocated intimin receptor middle domain (TirM). VHH clones binding each antigen were enriched and amplified by biopanning, and subsequently fused to the C-terminal secretion signal of HlyA to be expressed and secreted in a *E. coli* strain carrying the Hly export machinery (HlyB, HlyD and TolC). Individual *E. coli* clones were grown and induced in 96-well microtiter plates, and the supernatants of the producing cultures directly used in ELISA for detection of Nbs binding EspA, Int280 and TirM. A set of Nb sequences specifically binding each of these antigens were identified, indicating that the Hly system is able to secrete a diversity of functional Nbs. We performed thiol alkylation assays demonstrating that Nbs are correctly oxidized upon secretion, forming disulphide bonds between cysteine pairs despite the absence of a periplasmic intermediate. In addition, we show that the secreted Nb-HlyA fusions can be directly purified from the supernatant of *E. coli* cultures, avoiding cell lysis and in a single affinity chromatography step.

**Conclusions:** Our data demonstrate the Hly secretion system of *E. coli* can be used as an expression platform for screening and purification of Nb binders from VHH repertoires.

**Keywords:** *E. coli*/hemolysin, Nanobodies, Protein secretion, Single-domain antibodies

## Background

Secretion of proteins to the extracellular medium reduces toxicity for the producing cell and eliminates the need of cell lysis for downstream processes [1, 2]. The hemolysin A (HlyA; 110 kDa) and the protein components required for its secretion were originally

isolated from uropathogenic *E. coli* (UPEC) strains [3–6] and it serves as a paradigm of the bacterial Type I Secretion Systems (T1SS) [7, 8]. The Hly export machinery is composed of only three polypeptides, namely the inner membrane (IM) proteins HlyB and HlyD, and the outer membrane (OM) protein TolC. HlyB and HlyD are encoded, along with HlyA, in the Hly operon found in plasmids or the chromosome of UPEC strains, whereas TolC is encoded in a different location of the chromosome in most *E. coli* strains [4, 6, 9]. HlyB is a dimeric ABC-transporter anchored to the IM that has a cytosolic domain with ATPase activity

\*Correspondence: lafdez@cnb.csic.es

†David Ruano-Gallego and Sofía Fraile contributed equally to this work

<sup>1</sup> Department of Microbial Biotechnology, Centro Nacional de Biotecnología, Consejo Superior de Investigaciones Científicas (CSIC), Campus UAM-Cantoblanco, 28049 Madrid, Spain

Full list of author information is available at the end of the article



[10, 11], while HlyD is a member of trimeric adaptor proteins [12] with a larger portion spanning much of the periplasm [13]. TolC forms homotrimeric OM channel comprising a  $\beta$ -barrel pore with long  $\alpha$ -helical region that extends 10 nm toward the periplasm, forming a cylinder that opens to the extracellular medium, but is closed in the periplasmic entrance [14]. Upon engagement of HlyA in the cytosol by HlyB/D, TolC is recruited by this complex and its periplasmic entrance is opened to assemble a continuous channel connecting the IM and OM of *E. coli* [15–17] through which the HlyA polypeptide is secreted in a one-step mechanism, from the cytosol to the extracellular medium without a periplasmic intermediate (Fig. 1a) [7, 8]. TolC is a multifunctional protein that also participates in the secretion of other toxins and small molecules associated to different IM protein complexes [18].

Contrary to classical N-terminal signal peptides of proteins secreted to the periplasm by the Sec pathway [19], the signal for secretion of HlyA is located in the C-terminal end and is not removed during transport [20, 21]. The C-terminal location of HlyA signal also implies a post-translational mechanism of secretion. The last 50 amino acids of C-terminal end of HlyA appear to contain the signal recognized by HlyB/D complex [22, 23], but heterologous proteins have been secreted with this system fused to larger C-terminal fragments, comprising the last 60 amino acids [20, 24] and, more frequently, the last 218 residues (C-HlyA; 23 kDa), which includes three glycine- and aspartic-rich repeats, named as repeats in toxins (RTX) [7, 21]. Different heterologous proteins have been secreted in a functional form with C-HlyA, including the maltose binding protein [25], alkaline phosphatase [26, 27],  $\beta$ -lactamase [28], mammalian fatty acid binding protein [29], streptokinase [30], a single-chain Fv antibody [31], and a nanobody [32].

Nanobodies (Nbs) are recombinant single domain antibodies derived from the variable VHH domains from heavy chain-only antibodies (HCAbs) found in camelids (e.g., dromedaries, llamas, alpacas, etc.) [33, 34]. The VHHs have acquired important adaptations to be soluble and functional in the absence of the light chain, having longer and more diverse complementarity-determining regions (CDRs), strict monomeric behaviour, reversible folding properties, and higher resistance to proteolysis and thermal denaturation than VH domains from conventional antibodies [34]. These intrinsic biophysical properties facilitate their expression in bacteria, yeast, and mammalian hosts [35–38]. Their small size (ca. 14 kDa; 2–4 nm diameter) and long CDRs also allow binding of less accessible epitopes than those recognized by conventional antibodies, including active sites of enzymes [39, 40] and inner regions in the surface

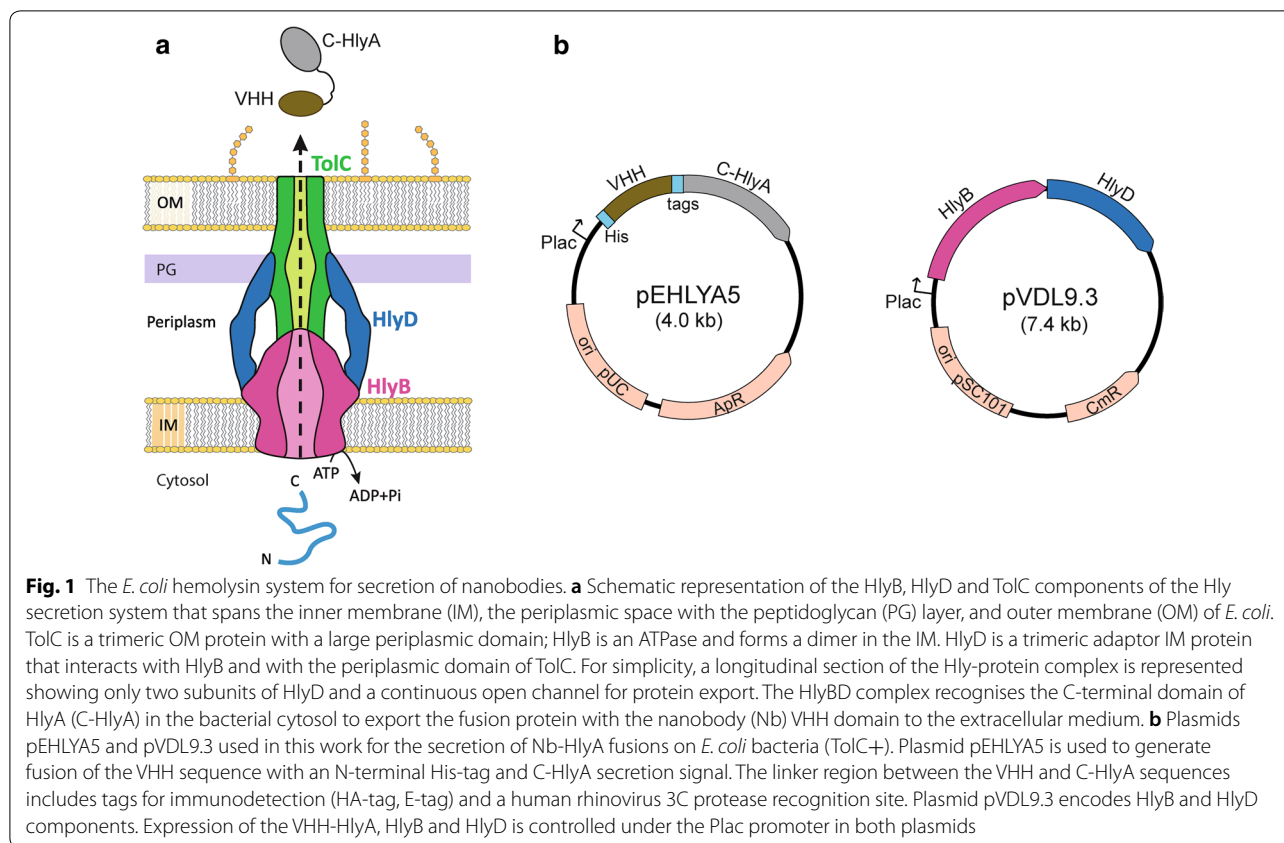
proteins of pathogens [41]. VHHs are also highly similar to human VH3 sequences, which is important to have a low immunogenicity in therapeutic applications of Nbs [42, 43]. These characteristics have made Nbs very attractive molecules for multiple applications, including cell biology studies [44], protein crystallography [45], therapy and in vivo diagnosis of human diseases [46–49]. Hence, methodologies for Nb selection, characterization and production are of great interest.

Secretion of Nbs to the extracellular medium of *E. coli* cultures could simplify the screening of clones binding an antigen of interest and their purification for in vitro characterization. Leakiness of the bacterial OM after overexpression in the periplasm allows, in some cases, the detection of Nbs in culture supernatants of *E. coli* [50, 51]. However, this is due to a non-specific release of periplasmic and cellular proteins due to bacterial lysis, and not to an actual secretion mechanism. Large accumulation of Nbs in the periplasm also leads to an impaired growth of the producing bacteria. Contrary to this, the Hly system specifically secretes the heterologous protein to the extracellular media, with little effect on the growth of the producing bacteria, given that the secreted protein is not accumulated in the periplasm and the integrity of the OM is not compromised [31]. Considering that a Nb binding  $\alpha$ -amylase had been secreted in an active form with Hly-secretion system of *E. coli* [32], we wondered whether the Hly-secretion system could secrete a large diversity of Nbs that can be found in an immune library. With this aim, we constructed and screened with the Hly-system an immune library of VHHs against three protein antigens from enterohemorrhagic *E. coli* (EHEC), namely the extracellular secreted protein A (EspA), the extracellular 280 amino acid C-terminal region of Intimin (Int280), and the translocated intimin receptor middle domain (TirM) [52–54]. Our data show that screening of *E. coli* culture supernatants after secretion of Nb-HlyA fusions allows the identification of a diverse set of Nbs binding these antigens. We also demonstrate that the secreted Nb-HlyA fusions present disulphide bonds, indicating a correct oxidation state of the cysteine pairs. Lastly, secreted Nb-HlyA fusions were directly purified in a single affinity chromatography step from the supernatants of small-scale *E. coli* cultures (200 ml), with yields ranging between ca. 200–800  $\mu$ g of purified Nb-HlyA fusion (~0.3–1.3 mg/l per OD600).

## Results and discussion

### Screening of Nbs against EspA, Int280, and TirM antigens of EHEC using the Hly secretion system

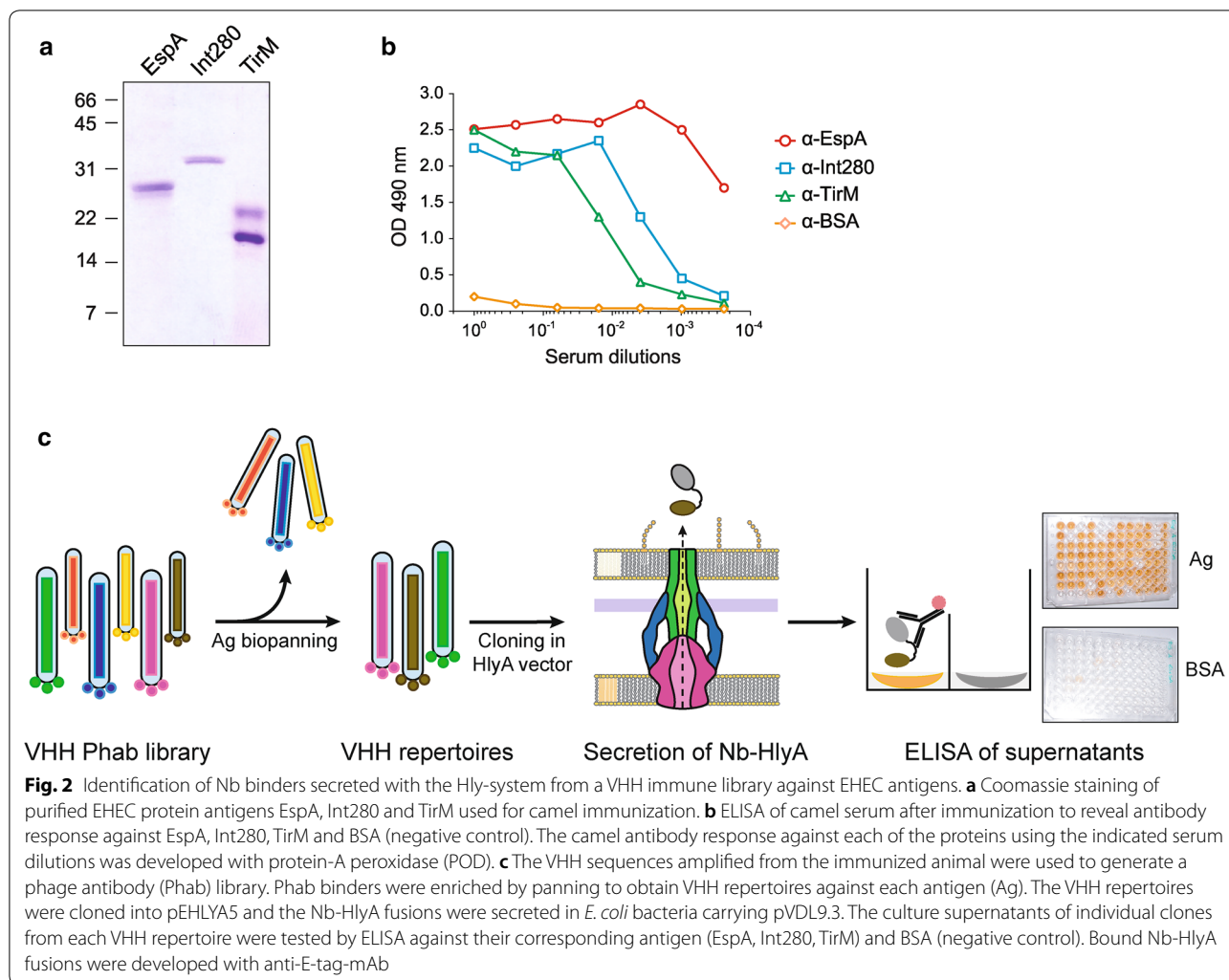
His-tagged versions of EspA, Int280, and TirM antigens from EHEC were purified and used for the immunization



of a dromedary (*Camelus dromedarius*) (Fig. 2a). The generation of camel antibodies against these antigens in the blood serum of the immunized animal was confirmed by ELISA (Fig. 2b). The VHH gene segments were amplified by RT-PCR from the mRNA of peripheral blood lymphocytes ( $\sim 2 \times 10^7$ ) and cloned in a phagemid vector (pCANTAB 5Ehis) [31]. Upon transformation into *E. coli* strain TG1, a VHH phagemid library was constructed with a diversity of  $\geq 1 \times 10^7$  clones. Phage antibody (Phab) particles displaying the Nbs were produced and subjected to two cycles of biopanning in immunoplates coated with EspA, Int280, and TirM antigens (“Methods”). Phabs bound to each of the antigens were recovered, amplified in *E. coli* TG1 bacteria, and pool of phagemid DNA isolated for each repertoire.

To evaluate the capacity of the Hly system to secrete a diversity of functional Nbs, the three repertoires of VHHs were excised from phagemid DNA and fused to the C-HlyA signal in the vector pEHLYA5 (Fig. 1b). This multicopy plasmid (pUC18-derivative; Ap<sup>R</sup>) carries an IPTG-inducible Plac promoter, an N-terminal His-tag, unique *Sfi*I and *Not*I restriction sites flanking the VHH against  $\alpha$ -amylase (Vamy) [32], a linker region having epitopes for immunodetection (HA- and E-tag) and the C-HlyA signal. The VHH repertoires were cloned replacing the

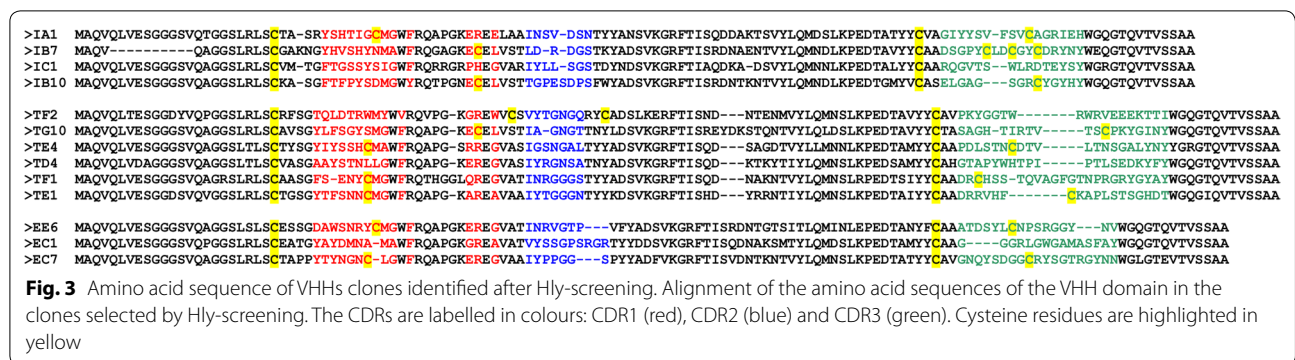
Vamy sequence in pEHLYA5 and transformed into *E. coli* strain HB2151 (TolC+) harbouring pVDL9.3, which expresses HlyB and HlyD under the control of Plac (Fig. 1b) [55]. 96 individual transformants from each repertoire were picked, inoculated in liquid media (96-well plates) and induced with IPTG. After centrifugation to remove bacteria, cultures supernatants were used directly in ELISA to determine binding to their respective antigen (EspA, Int280, or TirM) and to BSA, as a negative control antigen. To detect bound Nb-HlyA fusions, the ELISA plates were incubated with anti-E-tag mouse monoclonal antibody (mAb) and secondary anti-mouse IgG conjugated to peroxidase (POD). A scheme of the screening method is shown in Fig. 2c. We found that culture supernatants of ca. 30–70% of the clones, depending on the antigen, showed a positive ELISA signal against their corresponding antigen ( $OD_{490} \geq 0.3$ ), whereas their binding to BSA had signals  $\leq 0.10$ . These data suggested the secretion of functional Nb-HlyA fusions against the three antigens with variable affinity and/or secretion levels. Between 24 and 40 positive clones for each antigen, showing diverse signals in the ELISA ranging between  $OD_{490}$  values 0.3 and 2.5 units, were chosen for plasmid preparation. The sequence of the cloned VHHs was determined and aligned for comparison,



which confirmed the isolation of different Nb sequences with distinct CDRs for each antigen (Fig. 3). These clones were named after their recognized antigen (I for Int280, T for TirM and E for EspA). We found four different Nbs against Int280 (IA1, IB7, IB10, IC1), six Nbs against TirM (TD4, TE1, TE4, TF1, TF2, TG10) and three Nbs against EspA (EC1, EC7, EE6). Table 1 summarizes the identified Nbs, their frequency of isolation, and their CDR3 sequence.

Next, we compared the secretion levels and binding activity of representative clones from each group. *E. coli* bacteria carrying the empty vector (pUC18) were used as a negative control. Nb-HlyA fusions with the expected size (ca. 40–45 kDa) were detected by Western blot in the culture supernatant of all representative clones (Fig. 4a). The levels of secreted Nb-HlyA fusions were similarly high for 8 out of 14 clones, whereas the remaining 6 showed lower secretion levels. Binding of these clones to their respective antigen and BSA was

compared by ELISA using serial dilutions of the culture supernatants. Results from these experiments are shown in Fig. 4b, representing the OD490 values obtained for the dilutions of the culture supernatant of each clone against the specific antigen, subtracting background values to BSA. From these data, clones IB10, TD4, and EC7 clearly showed the highest binding activities for their respective antigens, with positive ELISA signals at dilutions  $\geq 10^{-2}$  (Fig. 4b). These results demonstrate that the Hly-system allows the secretion of different Nb sequences against all antigens tested, with variable expression levels and binding activities, as can be expected in the screening of VHH libraries. Hence, the Hly-system has the capacity to secrete a diversity of VHHs in a functional form, with secretion levels in the culture supernatants high enough to allow the detection of positive Nb binders with different affinities for the antigen.



**Fig. 3** Amino acid sequence of VHHs clones identified after Hly-screening. Alignment of the amino acid sequences of the VHH domain in the clones selected by Hly-screening. The CDRs are labelled in colours: CDR1 (red), CDR2 (blue) and CDR3 (green). Cysteine residues are highlighted in yellow

**Table 1 Nanobodies identified against EHEC antigens by Hly screening**

Antigen	Representative clone	Frequency	CDR3 sequence
Int280	IA1	14/27	GIYYSVFSVCAGRIEH
	IB7	6/27	DSGPYCLDCGYCDRYNY
	IC1	6/27	RQGVTSWLRDTEYSY
	IB10	1/27	ELGAGSGRCYGYHY
TirM	TF2	10/24	PKYGGTWRWRVEEEKTTI
	TD4	4/24	SAGHTIRTVTSCPKYGINY
	TF1	4/24	PDLSTNCDTLTNSGALYNY
	TG10	4/24	GTAPYWHPTIPLTSEDKYFY
	TE1	1/24	DRCHSSTQVAGFGTNPGRGYAY
EspA	TE4	1/24	DRRVHFCKAPLSTSGHDT
	EC7	33/40	ATDSYLCNPSRGGYNYV
	EC1	6/40	GGGRLGWGAMASFAY
	EE6	1/40	GNQYSDGGCRYSGTRGYNN

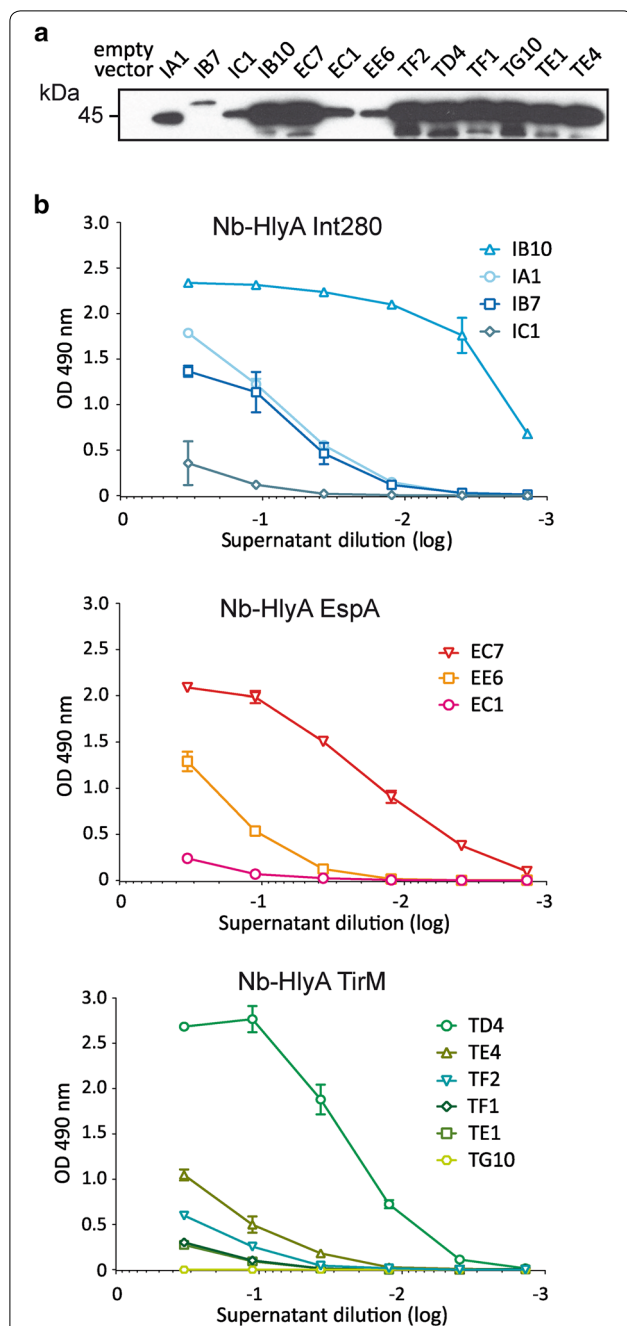
**Disulphide bonds in the secreted Nb-HlyA fusions**

In *E. coli*, the cytosol is a strongly reducing environment, and cytoplasmic proteins usually do not form stable disulphide bonds [56, 57]. In contrast, cysteines in extracellular and periplasmic proteins secreted by the Sec-pathway are frequently oxidized, forming disulphide bonds catalysed by specialized Dsb-enzymes located, or having their catalytic sites, in the periplasm of *E. coli* [58, 59]. Proteins secreted by the Hly-system do not have access to the periplasm but, despite this, disulphide bonds were formed in a secreted scFv-HlyA fusion independently of Dsb-enzymes [60]. In contrast, when the same scFv was secreted fused to an autotransporter  $\beta$ -domain, which uses a periplasmic-dependent pathway, the presence of disulphide bonds required Dsb-enzymes (e.g. DsbA), which were not formed spontaneously in the extracellular medium [60].

Camelid VHHs frequently have, in addition to the conserved cysteine pair found in most immunoglobulin (Ig)

domains, extra cysteine residues in the CDRs that also form disulphide bonds [61]. Out of the Nb sequences selected in the Hly-screening (Fig. 3), three clones have the two cysteines of the canonical disulphide bond of Ig-domains (IC1, TD4, EC1), whereas the rest contain one extra pair of cysteines (IA1, IB10, TF2, TG10, TE4, TF1, TE1, EE6, EE7) or two (IB7). We chose two clones having either two (TD4) or four (TF1) cysteines and investigated the oxidation state of the Nb-HlyA fusions, secreted and in the producing bacteria, by incubation with the thiol alkylating reagent 4-acetamido-4'-maleimidylstilbene-2,2'-disulphonic acid (AMS). AMS has a molecular mass of ca. 500 Da and its covalent binding to free thiol groups increase the protein mass and induce a retardation of its mobility in non-reducing SDS-PAGE. In contrast, proteins having disulphide bonds do not react with AMS and show a faster electrophoretic mobility.

Bacterial cultures of TD4 and TF1 clones were induced and their culture supernatants and bacteria were collected. These samples were either directly precipitated with trichloroacetic acid (TCA), or previously incubated with dithiothreitol (DTT), to obtain positive controls of reduced samples before TCA-precipitation. Precipitated samples were resuspended in buffer having AMS, or lacking this alkylating reagent to obtain negative controls of alkylation (see “Methods”). All samples were subsequently subjected to non-reducing SDS-PAGE and Western blot. As expected, protein bands corresponding to Nb-HlyA fusions migrated differently depending on the treatment (Fig. 5). Secreted Nb-HlyA fusions were retarded in samples treated with DTT and AMS (reduced and alkylated controls; Fig. 5, lanes 1) and showed a faster mobility in untreated samples (Fig. 5, lanes 4), which were indicative of the mobilities of these Nb-HlyA fusions in their fully reduced and oxidized forms, respectively. Importantly, both Nb-HlyA fusions were found to be oxidized in the extracellular media treated with AMS (Fig. 5, lanes 3, Supernatants) and were reduced in the bacterial samples treated with AMS (Fig. 5, lanes 3, Bacteria). Non-alkylated samples had no migration drift.



**Fig. 4** Secretion of Nb-HlyA fusions and antigen binding of representative clones. Representative clones of the identified VHH sequences against Int280, EspA and TirM were secreted as Nb-HlyA fusions. **a** Western blot developed with anti-E-tag-mAb of supernatants from induced cultures of the indicated clones showing a major protein band of ca. 42–45 kDa corresponding to Nb-HlyA fusions. The image shown is overexposed to visualize clearly protein bands of clones with lower expression levels. **b** ELISA of culture supernatants containing secreted Nb-HlyA fusions of the indicated clones against Int280 (top), EspA (middle) and TirM (bottom) developed with anti-E-tag mAb-POD. The represented OD490 values are the average from triplicate culture supernatants of each clone. Background signals to BSA are subtracted from the values obtained against the specific antigen (Int280, EspA, TirM)

Hence, these data showed that thiol groups of Nb-HlyA fusions having 2 or 4 cysteine pairs, which are the most common among VHHs, have disulphide bonds in the secreted fusions but are reduced in the bacterial cytoplasm prior to their secretion. These results agree with those previously reporting the formation of disulphide bonds in a secreted scFv-HlyA fusion [60].

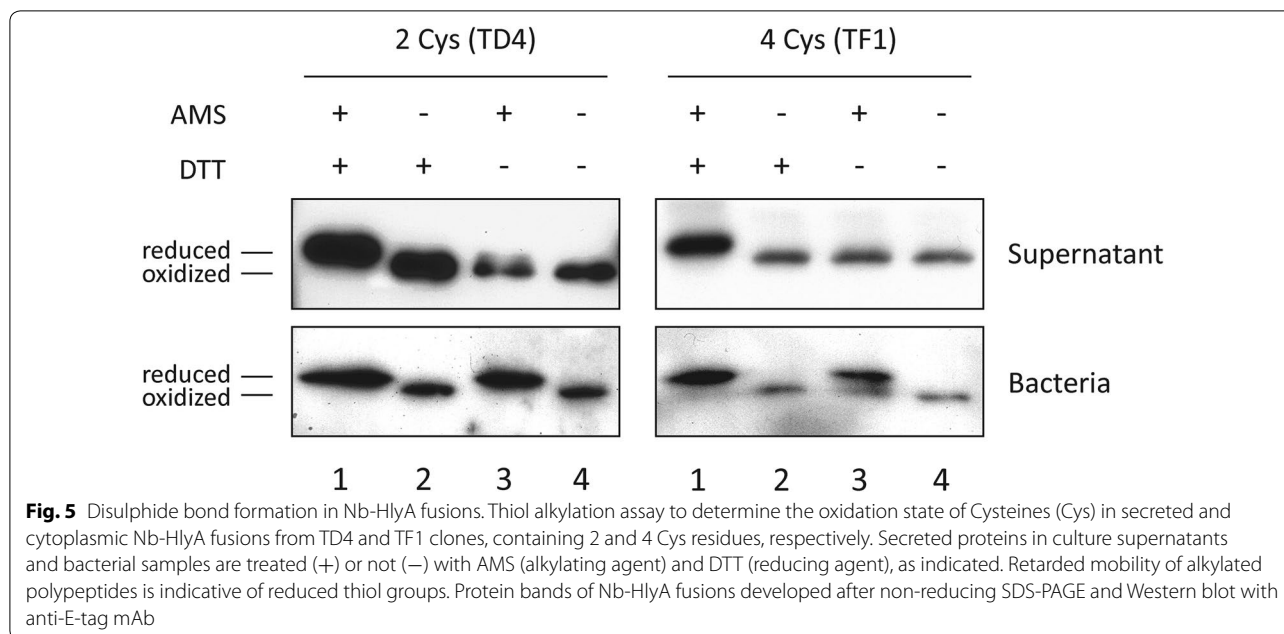
#### Purification of Nb-HlyA fusions from culture supernatants

To test the purification of secreted Nb-HlyA fusions, we chose the clones IB10, EC7 and TD4, which showed the higher binding signals against each antigen in culture supernatants (Fig. 3). *E. coli* HB2151(pVDL9.3) bacteria with the corresponding pEHLYA5-derivative were grown in 200 ml LB liquid cultures in shake flasks and induced with IPTG (see “Methods”). The culture supernatants were collected after centrifugation, equilibrated to PBS 1X and directly passed through a Cobalt-containing agarose resin for immobilized metal affinity chromatography (IMAC). The secreted Nb-HlyA fusions bound to the IMAC column were eluted by addition of imidazole. SDS-PAGE and Coomassie staining of the purified protein samples revealed major protein bands with the expected size of the Nb-HlyA fusions (ca. 42 kDa; Fig. 6a). Minor protein bands of smaller size are also visible, which likely correspond to proteolytic fragments of the full-length Nb-HlyA detected by Western blot (Fig. 4a). We quantified the amount of Nb-HlyA fusions obtained for each clone, which ranged between ca. 200–800 µg from these 200 ml cultures, indicating a yield equivalent to 0.3–1.3 mg/l per OD600.

Lastly, we confirmed the binding of the purified Nb-HlyA fusions for the corresponding antigen (i.e., Int280, TirM, EspA) by ELISA, using BSA as a negative control antigen. ELISA were developed with anti-E-tag mAb-POD and OD490 values to BSA (ca.  $\leq 0.1$ ) were subtracted from those obtained with the specific antigen at the different concentrations of the Nb-HlyA fusions (from 1 to 1000 nM; Fig. 6b). These data confirmed the activity of the purified Nb-HlyA fusions with curves indicating binding at low concentrations (1–10 nM). Hence, a single IMAC step allowed the purification of active Nb-HlyA fusions secreted in the culture supernatants of *E. coli*.

#### Conclusions

The Hly-system had been used previously for the secretion of a model Nb binding  $\alpha$ -amylase [32], but its potential to secrete repertoires of Nbs had not been tested. This work has shown that VHH repertoires can be secreted as Nb-HlyA fusions with the Hly-system of *E. coli*. Culture supernatants can be used directly in ELISA to identify antigen-specific binders among the secreted Nb-HlyA



fusions, as we did for an immune library of VHHs against Int280, TirM and EspA antigens of EHEC. In addition, we have shown that active Nb-HlyA fusions can be purified from culture supernatants using a single IMAC step, avoiding bacterial cell lysis. Secretion facilitates purification, reduces toxicity for the producing bacteria and minimizes the action of intracellular proteases [1, 2]. Finally, we have demonstrated that the cysteine pairs found in VHHs form disulphide bonds in the secreted Nb-HlyA fusions. In contrast, these cysteines are reduced in the cytoplasm of bacteria, indicating that oxidation of Nb-HlyA fusions occurs associated to protein secretion. Taken together, these data reveal the Hly-system as a suitable platform for the secretion of Nbs in screenings of VHH repertoires, which could be enriched by phage display or alternative yeast and *E. coli* display technologies [36]. The amount of Nb produced in this work using small-scale shake-flask cultures is sufficient for in vitro characterization of the antigen-binding properties of the selected Nb clones. Higher yields of production may be attained in fed-batch cultures of *E. coli* (in bioreactors) in which very high cell densities can be achieved ( $OD_{600} > 50$ ) and by optimization of the expression of Hly-export machinery and Nb-HlyA in the producing *E. coli* strain [1, 62–64].

## Methods

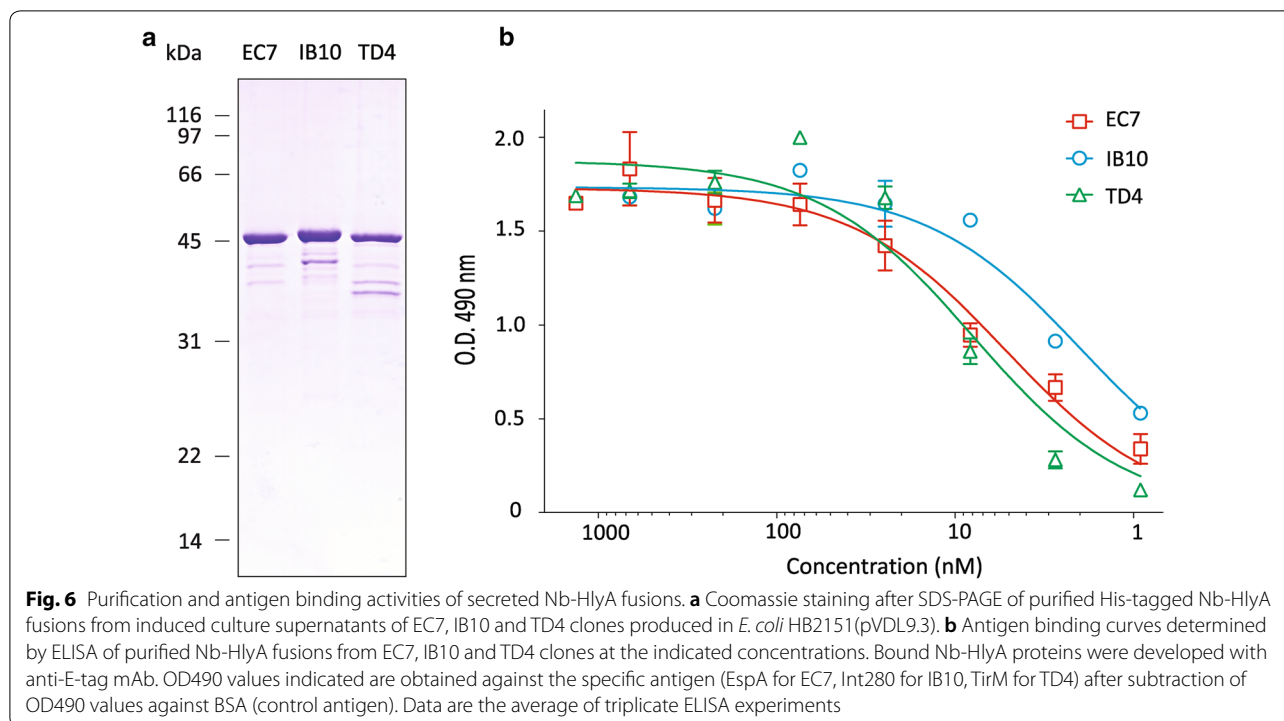
### Conditions for bacterial growth

*Escherichia coli* strains used in this work are listed in Table 2. Bacteria were grown at 30 °C or 37 °C, as indicated, in LB-agar plates (1.5% w/v) or in liquid LB

medium. Antibiotics for plasmid selection were added at the following concentrations: ampicillin (Ap) 150 µg/ml; chloramphenicol (Cm) 30 µg/ml; kanamycin (Km) 50 µg/ml. Cultures of *E. coli* strain HB2151 carrying pVDL9.3 (*hlyB hlyD*) and the indicated pEHLA5-derivative were grown overnight (o/n) at 30 °C (170 rpm) in liquid LB + Ap + Cm. Next, bacteria were inoculated in fresh medium and grown at 37 °C (170 rpm) until  $OD_{600}$  reached 0.5. At this point, bacteria were induced with 1 mM isopropyl-1-thio- $\beta$ -D-galactoside (IPTG) and further incubated for 6 h with shaking (100 rpm). Average final  $OD_{600}$  determined for these cultures were  $\sim 3.0$  ( $\pm 0.25$ ). For secretion on 96-well plates, 200 µl of liquid media per well were used for growth and induction, as above. Culture supernatants were obtained after centrifugation (400g, 10 min). For secretion in flasks (200 ml of liquid media in 1 l flask), cultures were centrifuged twice (10 min, 10,000g, 4 °C) and the supernatants were collected for IMAC purification. In all cases, culture supernatants were equilibrated to PBS 1 $\times$  (by adding 1/10th volume of PBS 10 $\times$ ) before downstream use.

### Plasmids, DNA constructs, and oligonucleotides

Plasmids used in this study are listed in Table 2. *E. coli* strain DH10B-T1R was used as host for the cloning and propagation of plasmids. PCRs were performed with the Taq DNA polymerase (Roche, NZyTech) for standard amplifications in screenings and with the proofreading DNA polymerase Herculase II Fusion (Agilent Technologies) for cloning purposes. Int280 (residues 660 to 939 of Intimin), EspA (full-length) and TirM (residues



252 to 360 of Tir) sequences of EHEC were amplified by PCR from genomic DNA of EHEC strain EDL933 $stx$ -[65] and cloned *EcoRI*–*HindIII* into the pET28a plasmid backbone under the T7 promoter and fused to a N-terminal His-tag for purification. Plasmid pEHLY5 was constructed using vector pEHLYA2SD [31], by insertion of a chemically synthesized (GeneArt-ThermoFisher) *XbaI*–*BamHI* DNA fragment of 566 bp encoding the His-tag-VHH(amyase)-HA-3Csite-E-tag region of pEHLYA5, which contains unique *SfiI*/*NcoI* and *NotI* sites flanking the VHH. All plasmid constructs were fully sequenced (Secugen, Madrid, Spain). Oligonucleotide used as primers (Sigma) are described in Table 3.

#### Immunization and generation of the VHH library

Purified His-tagged Int280, TirM and EspA from EHEC were diluted in sterile water (2.5 ml) and mixed at 0.2 mg/ml to the same volume of adjuvant (Veterinary Vaccine Adjuvant, GERBU) reaching a total volume of 5 ml. This solution was injected subcutaneously to one male dromedary camel (*Camelus dromedarius*) corresponding to 0.5 mg of each antigen. After the initial immunization, four boosting immunizations were performed in the same manner once per week. Pre-immune serum was prepared from a small blood sample (5 ml) before the first injection. The immune serum was collected 7 days after the last immunization. Serial dilutions of pre-immune and immune sera were used in ELISA to confirm the immune

response against the respective antigens with protein A-POD as secondary. Additional 50 ml of blood of the immunized animal were collected from the jugular vein in tubes containing EDTA as anticoagulant, using Venoject system. For lymphocyte isolation, 50 ml of RPMI-1640 medium (Sigma) were added to the 50 ml blood sample and the final mixture was divided in 4 aliquots of 25 ml. Each aliquot was added on top of a 25 ml of Ficoll-Paque Plus (StemCell Technologies) in sterile capped 50 ml Falcon tubes. After centrifugation (800g, 30 min, RT), lymphocytes were taken from the interphase, washed twice in RPMI-1640 by centrifugation (800g, 10 min), resuspended in 5 ml of RPMI-1640, and the number of cells determined in a Neubauer hemacytometer (Hausser Scientific). About  $2 \times 10^7$  cells were lysed with 2 ml of Trizol (Invitrogen) for RNA extraction following manufacturer instructions. The poly-A<sup>+</sup> mRNA was purified from total RNA using an oligo-dT resin (Oligotex mRNA Mini-kit, Qiagen) and directly employed as template for first-strand cDNA synthesis reactions with random hexamers and oligo-dT primers (iScript cDNA Synthesis, Bio-Rad). About 1  $\mu$ l of each cDNA synthesis was used as template in 50  $\mu$ l PCR reactions with oligonucleotides CALL001 and CALL002. The amplified fragments of  $\approx 0.6$  kb, corresponding to VHH-C<sub>H2</sub> domains, and  $\approx 0.9$  kb, corresponding to conventional V<sub>H</sub>-C<sub>H1</sub>-C<sub>H2</sub> domains, were separated in 1.2% (w/v) low melting agarose gel and the  $\approx 0.6$  kb band was purified (Qiaex II Gel Extraction



**Table 2 Bacterial strains and plasmids used in this work**

Name	Relevant characteristics	Source or reference
DH10B-T1R	(F <sup>-</sup> λ <sup>-</sup> ) <i>mcrA Δmrr-hsdRMS-mcrBC φ80lacZΔM15, ΔlacX74, recA1, endA1, Δ(ara, leu)7697 galU galK rpsL(Str<sup>R</sup>), nupG tonA</i>	Novagen-Merck
HB2151	<i>Δlac-pro, ara, na<sup>R</sup>, thi, F'(proAB lacI<sup>Q</sup> lacZΔM15)</i>	[68]
TG1	<i>Δ(lac-proAB) Δ(mcrB-hsdSM)5 (rk<sup>-</sup> mk<sup>-</sup>) thi-1 supE [F' traD36 proAB lacIqZΔM15]</i>	Stratagene-ThermoFisher
BL21 (DE3)	F <sup>-</sup> ; <i>ompT hsdSB(rB<sup>-</sup>, mB<sup>-</sup>) gal dcm lon λ(DE3[lacI lacUV5-T7 gene1 ind1 sam7 nin5])</i>	Novagen-Merck
pCANTAB-5Ehis	Ap <sup>R</sup> ; phagemid vector for periplasmic production of Nb-pIII fusions with His and E-tag	[31]
pEHlyA5	Ap <sup>R</sup> ; pUC ori, <i>lac</i> promoter, N-terminal His tag, VHH, HA and E-tags, C-HlyA	This work
pVDL9.3	Cm <sup>R</sup> ; expression of HlyB and HlyD	[55]
pET28a	Km <sup>R</sup> ; pBR ori, T7 promoter, N-terminal His-tagged fusions	Novagen-Merck
pET28a-TirM <sub>EHEC</sub>	pET28a derivative; expression of His-tagged TirM of EHEC	This work
pET28a-Int280 <sub>EHEC</sub>	pET28a derivative; expression of His-tagged Int280 of EHEC	This work
pET28a-EspA <sub>EHEC</sub>	pET28a derivative; expression His-tagged EspA of EHEC	This work

**Table 3 Oligonucleotides used in this study**

Name	Sequence (5'→3')
CALL001	GTCCTGGCTCTCTTCTACAAGG
CALL002	GGTACGTGCTGTGAACTGTTCC
VHH-Sfi2	GTCCTCGCAACTCGCGCCAGCCGGCCATGGCTCAGGTG CAGCTGGTGGGA
VHH-NotI2	GGACTAGTGGCGCCGCTGAGGAGACGGTGACCTGGGT
BamEcoTirM-EHEC	CGCGGATCCGAATTCAGGCGCTTGCAATGACGCCGGAG
XhoHindInt280-EHEC	CCGCTCGAGAAGCTTTTACGATGAACTTTCAGCTCCTCCTG
BamEcoInt280-EHEC	CGCGGATCCGAATTCATTACTGAGATTAAGGCTGATAAG
XhoHindInt280-EHEC	CCGCTCGAGAAGCTTTTATTCTACACAACCGCATAGAC
BamEcoEspA-EHEC	CGCGGATCCGAATTCATGATACATCAATGCAACATCC
XhoHindEspA-EHEC	CCGCTCGAGAAGCTTTTATTACCAAGGGATATTGCTGA

kit, Qiagen). This fragment was used as template in a second PCR reaction with oligonucleotides VHH-Sfi2 and VHH-Not2 (Table 3) to finally obtain the amplified fragments of ~0.4 kb, corresponding to the VHH domains. The amplified VHH fragments were cloned *SfiI-NotI* into the phagemid pCANTAB 5Ehis-backbone [66]. Ligations were electroporated in *E. coli* TG1 cells (Stratagene) and a library size of approx.  $2 \times 10^7$  clones were determined by plating dilutions on LB + Ap agar plates with 2% w/v glucose at 30 °C.

### Protein purification

Cultures of *E. coli* BL21(DE3) carrying the corresponding pET28a-derivative were grown at 30 °C in 500 ml of LB + Km and induced at OD600 ~ 0.5 with 1 mM IPTG during 2 h. Cells were harvested by centrifugation (10 min, 10,000g, 4 °C), resuspended in 20 ml of Solution A—NaPO<sub>4</sub> pH 7, 300 mM NaCl, DNase (0.1 mg/ml; Roche) and protease inhibitor cocktail (Roche)—, and lysed by passing three times through a French-Press at 1200 psi. The resultant lysate was ultracentrifuged

(60 min, 40,000g, 4 °C) to obtain a cleared lysate supernatant. For purification of the His-tagged Int280<sub>EHEC</sub>, EspA<sub>EHEC</sub>, TirM<sub>EHEC</sub>, the lysates were passed through 2 ml of pre-equilibrated Cobalt-containing resin (Clontech) in a chromatography column and were washed with HEPES buffer (20 mM HEPES pH 7.4, 200 mM NaCl). The bound His-tagged proteins were eluted adding the same buffer complemented with 100 mM imidazole and were collected in 0.5 ml aliquots. For the purification of the secreted His-tagged Nb-HlyA fusions, supernatants from induced cultures were loaded at ca. 1 ml/min onto chromatography columns with pre-equilibrated Cobalt-containing resin (Clontech). Columns were washed with PBS and eluted with the same buffer containing 150 mM imidazole. Fractions eluted from metal-affinity chromatography were concentrated to a final ~ 1 ml in PBS using a 3 kDa centrifugal filter unit (Amicon Ultra-15, Millipore). Protein concentration was estimated using the Bicinchoninic acid protein assay kit (Thermo Scientific).

### Packaging of Phabs into M13 particles

For preparation of phage antibodies (Phabs) a mixture of *E. coli* TG1 cells representing the library or a sub-population after panning, was incubated in 25 ml of LB-Ap supplemented with 2% (w/v) glucose at 30 °C until OD600 ~ 0.2. At this point, 10<sup>10</sup> plaque forming units (PFU) of VCS-M13 helper phage (Km<sup>R</sup>; Stratagene) were added for 1 h incubation at 37 °C with gentle agitation. Then, *E. coli* cells were harvested by centrifugation (5 min, 4000g, RT) and resuspended in 250 ml of fresh LB + Ap + Km. After 16 h of incubation at 30 °C, the cultures were chilled on ice and centrifuged (10 min, 8000g, 4 °C). To recover the M13-particles from the supernatant, 50 ml of PEG-NaCl solution (20% w/v polyethylene glycol 8000; 2.5 M NaCl) were added and the resulting mixture was kept on ice for additional 45 min. Phage pellets

obtained after centrifugation (20 min, 10,000g, 4 °C) were resuspended in 2 ml of TE (10 mM Tris-HCl, 1.0 mM EDTA, pH 8.0) and stored at - 80 °C.

#### Library enrichment by Phab panning

All steps were performed at room temperature (RT). Each antigen (10 µg/ml, in PBS) was adsorbed for 2 h to 4 wells (50 µl/well) of a microtiter immunoplate (Maxisorb, Nunc). These solutions were discarded, and the wells were blocked by adding 200 µl/well of PBS with 3% w/v skimmed milk and 1% w/v BSA (Sigma). After 2 h, the blocking solution was replaced by a total of  $2 \times 10^{11}$  PFU of Phabs in 50 µl of PBS with 3% w/v skimmed milk. Phabs were allowed to bind for 1 h, and the unbound Phabs were removed from the plates by 20 washes of 1 min employing 200 µl/well of PBS with Tween20 0.05% and another 20 washes with PBS. To collect the bound Phabs, wells were incubated during 5 min with 0.1 M glycine pH 2.5 (50 µl/well). The solution from the wells was pooled together and immediately equilibrated by addition of one volume (400 µl) of 1 M Tris-HCl, pH 7.5. Phabs in this solution were later used to infect TG1, which were plated on LB+Ap agar plates. After 24 h incubation at 30 °C, colonies grown on these plates were harvested as a pool and used for phagemid packaging.

#### Selection of individual specific binders

For rapid screening of individual Phab binders, a small-scale rescue of phagemids was performed in 150 µl cultures of TG1 grown in 96-well microtitre plates using  $10^9$  PFU of helper-M13 phages. After production of the phagemids the plate was centrifuged (10 min, 600g, RT) and the supernatants (containing the Phabs) were used in ELISA to determine their specific binding to the antigen. At least  $2 \times 10^6$  independent colonies from each enriched Phab library were harvested from agar plates, and 50 units of OD600 were used for plasmid isolation (NucleoBond Xtra Midi, Macherey-Nagel). The VHH fragments were cloned *SfiI-NotI* into the pEHLA5 backbone vector under the Plac promoter. The size of each library was  $2-3 \times 10^6$  clones, as determined by plating dilutions on LB+Ap agar plates with 2% (w/v) glucose incubated at 30 °C. Isolated plasmids from the pools were transformed in strain HB2151 harbouring plasmid pVDL9.3 and individual colonies were isolated in 96-well microtitre plates with 200 µl of liquid LB-media with appropriated antibiotics and 1 mM IPTG for the secretion of the Nb-HlyA fusions.

#### Alkylation of thiol groups in Nb-HlyA fusions

Protein samples from extracellular media and whole-cell bacteria were treated with the alkylating reagent 4-acetamido-4'-maleimidylstilbene-2,2'-disulphonic acid

(AMS; ThermoFisher Scientific) as reported previously [60]. Briefly, for Nb-HlyA in supernatants, four aliquots of 800 µl from each induced culture supernatant were taken. Two of these aliquots were incubated with dithiothreitol (DTT, 25 mM) to obtain positive controls of reduced proteins. After incubation for 10 min at 37 °C, all four aliquots were precipitated with trichloroacetic acid (TCA, 10% w/v) for 1 h at 4 °C, and precipitated proteins were recovered by centrifugation (14,000g, 15 min). The protein pellets were washed twice with 1 ml of ice-cold acetone followed by centrifugation (14,000g, 15 min). Two of these protein pellets (AMS positive samples) were resuspended in 75 µl of a freshly prepared alkylation buffer (150 mM Tris HCl pH 7.5, 1% w/v SDS, 5% v/v glycerol, 15 mM AMS). The other two samples were resuspended in 75 µl of the same buffer without AMS. After 1 h incubation at 22 °C, 75 µl of non-reducing SDS-PAGE sample buffer was added (see below).

For intracellular Nb-HlyA, bacteria from 1 ml of induced cultures were harvested, washed once, and resuspended in the same volume of LB. Samples were divided in four 200 µl aliquots and two of them were adjusted to 0.1 M DTT (DTT+ samples). Following 20 min incubation on ice, TCA was added (10% w/v). After 1 h incubation at 4 °C, the precipitated proteins collected by centrifugation (14,000g, 15 min, 4 °C). Pellets were washed once with 1 ml of ice-cold acetone, air-dried, and resuspended in 20 µl of alkylation buffer (AMS positive samples), or 20 µl of the same buffer without AMS. After incubation for 1 h at 22 °C, 10 µl of non-reducing SDS-PAGE sample buffer were added. All samples were boiled at 100 °C for 10 min before loading for SDS-PAGE (5–10 µl/well).

#### SDS-PAGE and Western blot

Sodium Dodecyl Sulfate-Polyacrylamide gel electrophoresis (SDS-PAGE) and Western blot were performed following standard methods [67] using the Miniprotein III system (Bio-Rad). The sample buffer for reducing SDS-PAGE is 60 mM Tris-HCl pH 6.8, 1% w/v SDS, 5% v/v glycerol, 0.005% w/v bromophenol blue and 1% v/v 2-mercapto-ethanol (2-ME). In non-reducing SDS-PAGE, the sample buffer was devoid of 2-ME. Proteins separated by SDS-PAGE were either stained with Coomassie Blue R-250 (Bio-Rad) or subjected to Western blot. For the latter, the proteins were transferred to a polyvinylidene difluoride membrane (PVDF, Immobilon-P, Millipore) using semi-dry electrophoresis (Bio-Rad), as previously described [67]. Nb-HlyA fusions were detected with primary mAb anti-E-tag (Phadia, 1:5000) and secondary polyclonal rabbit anti-mouse IgG antibodies fused to POD (1:5000, Sigma). Membranes were developed using a mixture of 100 mM Tris-HCl (pH 8.0)

containing 1.25 mM luminol (Sigma), 0.22 mM cumaric acid (Sigma), and 0.0075% (v/v) H<sub>2</sub>O<sub>2</sub> (Sigma). The membranes were then developed by exposure to X-ray films (AGFA).

#### Enzyme-linked immunosorbent assays (ELISAs)

ELISA conditions were based on those described previously [57]. Briefly, 96-well immunoplates (Maxisorp, Nunc) were coated for 120 min at RT with purified antigens (as indicated) diluted in PBS at a concentration of 5 µg/ml. Bovine serum albumin (BSA, Roche) was used as a negative control for detection. Phabs, culture supernatants or purified Nb-HlyA fusions were added to the wells at the indicated dilutions. For detection of bound Phabs, an anti-M13-HRP mAb (GE Healthcare) was added (1:5000). For detection of Nb-HlyA fusions, anti-E-tag mAb (1:2000; Phadia) and anti-mouse IgG-POD (1:2000; Sigma), as secondary antibody, were added. The reaction was developed with *o*-phenylenediamine (OPD, Sigma) and H<sub>2</sub>O<sub>2</sub> (Sigma) and the OD490 was determined using a microplate reader (iMark ELISA plate reader, Bio-Rad).

#### Abbreviations

Ab: antibody; ABC: ATP-binding cassette; AMS: 4-acetamido-4'-maleimidylstilbene-2,2'-disulphonic acid; Amy: α-amylase; Ap: ampicillin; BSA: bovine serum albumin; C-HlyA: C-terminal domain of 218 amino acids of HlyA; CDR: complementary determining region; Cm: chloramphenicol; Cys: cysteine; Dsb: disulphide bond; DTT: dithiothreitol; EHEC: enterohemorrhagic *E. coli*; ELISA: enzyme-linked immunosorbent assay; EspA: extracellular secreted protein A; HCAB: heavy-chain only antibodies; Hly: hemolysin; HlyA: hemolysin A; Ig: immunoglobulin; IM: inner membrane; IMAC: immobilized metal affinity chromatography; Int280: extracellular 280 amino acid C-terminal region of Intimin; IPTG: isopropyl-1-thio-β-galactoside; Km: kanamycin; mAb: monoclonal antibody; Nb-HlyA: nanobody fused to C-HlyA; Nb: nanobody; o/n: overnight; OD490: optical density at 490 nm; OD600: optical density at 600 nm; OM: outer membrane; OMP: outer membrane protein; OPD: *o*-phenylenediamine; PBS: phosphate-buffered saline; PFU: plaque forming units; PG: peptidoglycan; Phab: phage antibody; POD: peroxidase; PVDF: polyvinylidene difluoride membrane; RT-PCR: reverse transcription polymerase chain reaction; RT: room temperature; RTX: repeats in toxins; TCA: trichloroacetic acid; TirM: translocated intimin receptor middle domain; UPEC: uropathogenic *E. coli*; VHH: variable heavy chain domain from heavy-chain only antibodies.

#### Authors' contributions

DRG and SF performed the experiments; CG performed camel immunization and collect camel blood samples; DR, SF, CG and LAF designed the experiments and analysed data; LAF conceived this study and secured funding. DRG and LAF wrote the manuscript and prepared the Figures and Tables. All authors read and approved the final manuscript.

#### Author details

<sup>1</sup> Department of Microbial Biotechnology, Centro Nacional de Biotecnología, Consejo Superior de Investigaciones Científicas (CSIC), Campus UAM-Cantoblanco, 28049 Madrid, Spain. <sup>2</sup> Research Institute of Biomedical and Health Sciences, Veterinary Faculty, Universidad de Las Palmas de Gran Canaria (UPGC), 35413 Arucas, Las Palmas, Canary Islands, Spain.

#### Acknowledgements

We thank Prof. Víctor de Lorenzo (CNB-CSIC) and Prof. Gad Frankel (Imperial College London) for helpful discussions and support. We acknowledge

support of the publication fee by the CSIC Open Access Publication Support Initiative through its Unit of Information Resources for Research (URICI).

#### Competing interests

The authors declare that they have no competing interests.

#### Availability of data and materials

All data generated and/or analysed during this study are included in this published article.

#### Consent for publication

Not applicable.

#### Ethics approval and consent to participate

The camel immunization protocol followed animal experimentation guidelines published by the regional government of the Canary Islands (Spain) and was approved by the Ethics Committee, Veterinary Medicine Service, Las Palmas de Gran Canaria University Foundation (Ref.: 0014/2011).

#### Funding

Work in the lab of LAF is partially supported by the Grants BIO2017-89081-R (Agencia Española de Investigación AEI/MICIU/FEDER, EU), ERC-2012-ADG\_20120314 (European Research Council, EU) and LCCM\_P59474 (Wellcome Trust, UK).

#### Publisher's Note

Springer Nature remains neutral with regard to jurisdictional claims in published maps and institutional affiliations.

Received: 31 December 2018 Accepted: 25 February 2019  
Published online: 11 March 2019

#### References

- Kleiner-Grote GRM, Risse JM, Friehs K. Secretion of recombinant proteins from *E. coli*. *Eng Life Sci*. 2018;18:532–50.
- Mergulhao FJ, Summers DK, Monteiro GA. Recombinant protein secretion in *Escherichia coli*. *Biotechnol Adv*. 2005;23:177–202.
- Welch RA, Dellinger EP, Minschew B, Falkow S. Haemolysin contributes to virulence of extra-intestinal *E. coli* infections. *Nature*. 1981;294:665–7.
- Mackman N, Nicaud JM, Gray L, Holland IB. Identification of polypeptides required for the export of haemolysin 2001 from *E. coli*. *Mol Gen Genet*. 1985;201:529–36.
- Bhakdi S, Mackman N, Menestrina G, Gray L, Hugo F, Seeger W, Holland IB. The hemolysin of *Escherichia coli*. *Eur J Epidemiol*. 1988;4:135–43.
- Wandersman C, Deleplaire P. TolC, an *Escherichia coli* outer membrane protein required for hemolysin secretion. *Proc Natl Acad Sci USA*. 1990;87:4776–80.
- Holland IB, Peherstorfer S, Kanonenberg K, Lenders M, Reimann S, Schmitt L. Type I protein secretion—deceptively simple yet with a wide range of mechanistic variability across the family. *EcoSal Plus*. 2016. <https://doi.org/10.1128/ecosalplus.ESP-0019-2015>.
- Thomas S, Holland IB, Schmitt L. The type 1 secretion pathway—the hemolysin system and beyond. *Biochim Biophys Acta*. 2014;1843:1629–41.
- Nicaud JM, Mackman N, Gray L, Holland IB. The C-terminal, 23 kDa peptide of *E. coli* haemolysin 2001 contains all the information necessary for its secretion by the haemolysin (Hly) export machinery. *FEBS*. 2001;1986(204):331–5.
- Holland IB, Schmitt L, Young J. Type 1 protein secretion in bacteria, the ABC-transporter dependent pathway (review). *Mol Membr Biol*. 2005;22:29–39.
- Pimenta AL, Racher K, Jamieson L, Blight MA, Holland IB. Mutations in HlyD, part of the type 1 translocator for hemolysin secretion, affect the folding of the secreted toxin. *J Bacteriol*. 2005;187:7471–80.
- Symmons MF, Marshall RL, Bavro VN. Architecture and roles of periplasmic adaptor proteins in tripartite efflux assemblies. *Front Microbiol*. 2015;6:513. <https://doi.org/10.3389/fmicb.2015.00513>.

13. Kim JS, Song S, Lee M, Lee S, Lee K, Ha NC. Crystal structure of a soluble fragment of the membrane fusion protein HlyD in a type I secretion system of gram-negative bacteria. *Structure*. 2016;24:477–85.
14. Koronakis V, Sharff A, Koronakis E, Luisi B, Hughes C. Crystal structure of the bacterial membrane protein TolC central to multidrug efflux and protein export. *Nature*. 2000;405:914–9.
15. Thanabalu T, Koronakis E, Hughes C, Koronakis V. Substrate-induced assembly of a contiguous channel for protein export from *E. coli*: reversible bridging of an inner-membrane translocase to an outer membrane exit pore. *EMBO J*. 1998;17:6487–96.
16. Andersen C, Hughes C, Koronakis V. Chunnel vision. Export and efflux through bacterial channel-tunnels. *EMBO Rep*. 2000;1:313–8.
17. Balakrishnan L, Hughes C, Koronakis V. Substrate-triggered recruitment of the TolC channel-tunnel during type I export of hemolysin by *Escherichia coli*. *J Mol Biol*. 2001;313:501–10.
18. Koronakis V. TolC—the bacterial exit duct for proteins and drugs. *FEBS Lett*. 2003;555:66–71.
19. Tsirogotaki A, De Geyter J, Sostaric N, Economou A, Karamanou S. Protein export through the bacterial Sec pathway. *Nat Rev Microbiol*. 2017;15:21–36.
20. Hess J, Gentschev I, Goebel W, Jarchau T. Analysis of the haemolysin secretion system by PhoA-HlyA fusion proteins. *Mol Gen Genet*. 1990;224:201–8.
21. Mackman N, Baker K, Gray L, Haigh R, Nicaud JM, Holland IB. Release of a chimeric protein into the medium from *Escherichia coli* using the C-terminal secretion signal of haemolysin. *EMBO J*. 1987;6:2835–41.
22. Chervaux C, Holland IB. Random and directed mutagenesis to elucidate the functional importance of helix II and F-989 in the C-terminal secretion signal of *Escherichia coli* hemolysin. *J Bacteriol*. 1996;178:1232–6.
23. Koronakis V, Koronakis E, Hughes C. Isolation and analysis of the C-terminal signal directing export of *Escherichia coli* hemolysin protein across both bacterial membranes. *EMBO J*. 1989;8:595–605.
24. Jarchau T, Chakraborty T, Garcia F, Goebel W. Selection for transport competence of C-terminal polypeptides derived from *Escherichia coli* hemolysin: the shortest peptide capable of autonomous HlyB/HlyD-dependent secretion comprises the C-terminal 62 amino acids of HlyA. *Mol Gen Genet*. 1994;245:53–60.
25. Bakkes PJ, Jenewein S, Smits SH, Holland IB, Schmitt L. The rate of folding dictates substrate secretion by the *Escherichia coli* hemolysin type I secretion system. *J Biol Chem*. 2010;285:40573–80.
26. Angkawidjaja C, Kuwahara K, Omori K, Koga Y, Takano K, Kanaya S. Extracellular secretion of *Escherichia coli* alkaline phosphatase with a C-terminal tag by type I secretion system: purification and biochemical characterization. *Protein Eng Des Sel*. 2006;19:337–43.
27. Erb K, Vogel M, Wagner W, Goebel W. Alkaline phosphatase which lacks its own signal sequence becomes enzymatically active when fused to N-terminal sequences of *Escherichia coli* hemolysin (HlyA). *Mol Gen Genet*. 1987;208:88–93.
28. Chervaux C, Sauvonnnet N, Clainche AL, Kenny B, Hunt AL, Broome-Smith JK, Holland IB. Secretion of active b-lactamase to the medium mediated by the *Escherichia coli* hemolysin transport pathway. *Mol Gen Genet*. 1995;249:237–45.
29. Schwarz CKW, Landsberg CD, Lenders MHH, Smits SHJ, Schmitt L. Using an *E. coli* Type 1 secretion system to secrete the mammalian, intracellular protein IFABP in its active form. *J Biotechnol*. 2012;159:155–61.
30. Kern I, Ceglowski P. Secretion of streptokinase fusion proteins from *Escherichia coli* cells through the hemolysin transporter. *Gene*. 1995;163:53–7.
31. Fernández LA, Sola I, Enjuanes L, de Lorenzo V. Specific secretion of active single-chain Fv antibodies into the supernatants of *Escherichia coli* cultures by use of the hemolysin system. *Appl Environ Microbiol*. 2000;66:5024–9.
32. Fraile S, Muñoz A, de Lorenzo V, Fernández LA. Secretion of proteins with dimerization capacity by the hemolysin type I transport system of *Escherichia coli*. *Mol Microbiol*. 2004;53:1109–21.
33. Hamers-Casterman C, Atarhouch T, Muyldermans S, Robinson G, Hamers C, Songa EB, Bendahman N, Hamers R. Naturally occurring antibodies devoid of light chains. *Nature*. 1993;363:446–8.
34. Muyldermans S. Nanobodies: natural single-domain antibodies. *Annu Rev Biochem*. 2013;82:775–97.
35. Fleetwood F, Devoogdt N, Pellis M, Wernery U, Muyldermans S, Ståhl S, Löfblom J. Surface display of a single-domain antibody library on gram-positive bacteria. *Cell Mol Life Sci*. 2013;70:1081–93.
36. Salema V, Fernandez LA. *Escherichia coli* surface display for the selection of nanobodies. *Microb Biotechnol*. 2017;10:1468–84.
37. McMahon C, Baier AS, Pascolutti R, Wegrecki M, Zheng S, Ong JX, Erlandson SC, Hilger D, Rasmussen SGF, Ring AM, et al. Yeast surface display platform for rapid discovery of conformationally selective nanobodies. *Nat Struct Mol Biol*. 2018;25(3):289–96. <https://doi.org/10.1038/s41594-018-0028-6>.
38. De Munter S, Ingels J, Goetgeluk G, Bonte S, Pille M, Weening K, Kerre T, Abken H, Vandekerckhove B. Nanobody based dual specific CARs. *Int J Mol Sci*. 2018;19:403. <https://doi.org/10.3390/ijms19020403>.
39. Lauwereys M, Arbabi Ghahroudi M, Desmyter A, Kinne J, Holzer W, De Genst E, Wyns L, Muyldermans S. Potent enzyme inhibitors derived from dromedary heavy-chain antibodies. *EMBO J*. 1998;17:3512–20.
40. Conrath KE, Lauwereys M, Galleni M, Matagne A, Frere JM, Kinne J, Wyns L, Muyldermans S. Beta-lactamase inhibitors derived from single-domain antibody fragments elicited in the camelidae. *Antimicrob Agents Chemother*. 2001;45:2807–12.
41. Stijlemans B, Conrath K, Cortez-Retamozo V, Van Xong H, Wyns L, Senter P, Revets H, De Baetselier P, Muyldermans S, Magez S. Efficient targeting of conserved cryptic epitopes of infectious agents by single domain antibodies. African trypanosomes as paradigm. *J Biol Chem*. 2004;279:1256–61.
42. Saerens D, Ghassabeh GH, Muyldermans S. Single-domain antibodies as building blocks for novel therapeutics. *Curr Opin Pharmacol*. 2008;8:600–8.
43. Steeland S, Vandembroucke RE, Libert C. Nanobodies as therapeutics: big opportunities for small antibodies. *Drug Discov Today*. 2016;21:1076–113.
44. Helma J, Cardoso MC, Muyldermans S, Leonhardt H. Nanobodies and recombinant binders in cell biology. *J Cell Biol*. 2015;209:633–44.
45. Pardon E, Laeremans T, Triest S, Rasmussen SG, Wohlkonig A, Ruf A, Muyldermans S, Hol WG, Kobilka BK, Steyaert J. A general protocol for the generation of nanobodies for structural biology. *Nat Protoc*. 2014;9:674–93.
46. Hu Y, Liu C, Muyldermans S. Nanobody-based delivery systems for diagnosis and targeted tumor therapy. *Front Immunol*. 2017;8:1442. <https://doi.org/10.3389/fimmu.2017.01442>.
47. Chakravarty R, Goel S, Cai W. Nanobody: the “magic bullet” for molecular imaging? *Theranostics*. 2014;4:386–98.
48. Oliveira S, Heukers R, Sornkom J, Kok RJ, En Henegouwen PMVB. Targeting tumors with nanobodies for cancer imaging and therapy. *J Control Release*. 2013;172:607–17.
49. Wesolowski J, Alzogaray V, Reyelt J, Unger M, Juarez K, Urrutia M, Cauerhff A, Danquah W, Rissiek B, Scheuplein F, et al. Single domain antibodies: promising experimental and therapeutic tools in infection and immunity. *Med Microbiol Immunol*. 2009;198:157–74.
50. Harmsen MM, De Haard HJ. Properties, production, and applications of camelid single-domain antibody fragments. *Appl Microbiol Biotechnol*. 2007;77:13–22.
51. Georgiou G, Segatori L. Preparative expression of secreted proteins in bacteria: status report and future prospects. *Curr Opin Biotechnol*. 2005;16:538–45.
52. Clements A, Young J, Constantinou N, Frankel G. Infection strategies of enteric pathogenic *E. coli*. *Gut Microbes*. 2012;3(2):71–87. <https://doi.org/10.4161/gmic.19182>.
53. Wong AR, Pearson JS, Bright MD, Munera D, Robinson KS, Lee SF, Frankel G, Hartland EL. Enteropathogenic and enterohaemorrhagic *Escherichia coli*: even more subversive elements. *Mol Microbiol*. 2011;80:1420–38.
54. Frankel G, Phillips AD. Attaching effacing *Escherichia coli* and paradigms of Tir-triggered actin polymerization: getting off the pedestal. *Cell Microbiol*. 2008;10:549–56.
55. Tzschaschel BD, Guzman CA, Timmis KN, de Lorenzo V. An *Escherichia coli* hemolysin transport system-based vector for the export of polypeptides: export of Shiga-like toxin IIeB subunit by *Salmonella typhimurium* aroA. *Nat Biotechnol*. 1996;14:765–9.
56. Bessette PH, Åslund F, Beckwith J, Georgiou G. Efficient folding of proteins with multiple disulfide bonds in the *Escherichia coli* cytoplasm. *Proc Natl Acad Sci USA*. 1999;96:13703–8.

57. Jurado P, Ritz D, Beckwith J, de Lorenzo V, Fernández LA. Production of functional single-chain Fv antibodies in the cytoplasm of *Escherichia coli*. *J Mol Biol*. 2002;320:1–10.
58. Nakamoto H, Bardwell JC. Catalysis of disulfide bond formation and isomerization in the *Escherichia coli* periplasm. *Biochim Biophys Acta*. 2004;1694:111–9.
59. Kadokura H, Katzen F, Beckwith J. Protein disulfide bond formation in prokaryotes. *Annu Rev Biochem*. 2003;72:111–35.
60. Fernández LA, De Lorenzo V. Formation of disulphide bonds during secretion of proteins through the periplasmic-independent type I pathway. *Mol Microbiol*. 2001;40:332–46.
61. Govaert J, Pellis M, Deschacht N, Vincke C, Conrath K, Muyldermans S, Saerens D. Dual beneficial effect of interloop disulfide bond for single domain antibody fragments. *J Biol Chem*. 2012;287:1970–9.
62. Pflieger BF, Pitera DJ, Smolke CD, Keasling JD. Combinatorial engineering of intergenic regions in operons tunes expression of multiple genes. *Nat Biotechnol*. 2006;24:1027–32.
63. Sharma SS, Blattner FR, Harcum SW. Recombinant protein production in an *Escherichia coli* reduced genome strain. *Metab Eng*. 2007;9:133–41.
64. Welch M, Govindarajan S, Ness JE, Villalobos A, Gurney A, Minshull J, Gustafsson C. Design parameters to control synthetic gene expression in *Escherichia coli*. *PLoS ONE*. 2009;4:e7002.
65. Perna NT, Plunkett G 3rd, Burland V, Mau B, Glasner JD, Rose DJ, Mayhew GF, Evans PS, Gregor J, Kirkpatrick HA, et al. Genome sequence of enterohaemorrhagic *Escherichia coli* O157:H7. *Nature*. 2001;409:529–33.
66. McCafferty J, Fitzgerald KJ, Earnshaw J, Chiswell DJ, Link J, Smith R, Kenten J. Selection and rapid purification of murine antibody fragments that bind a transition-state analog by phage display. *Appl Biochem Biotechnol*. 1994;47:157–73.
67. Ausubel FM, Brent R, Kingston RE, Moore DD, Seidman JG, Smith JA, Struhl K. Short protocols in molecular biology. 5th ed. New York: Wiley; 2002.
68. Carter P, Bedouelle H, Winter G. Improved oligonucleotide site-directed mutagenesis using M13 vectors. *Nucleic Acids Res*. 1985;13:4431–43.

Ready to submit your research? Choose BMC and benefit from:

- fast, convenient online submission
- thorough peer review by experienced researchers in your field
- rapid publication on acceptance
- support for research data, including large and complex data types
- gold Open Access which fosters wider collaboration and increased citations
- maximum visibility for your research: over 100M website views per year

At BMC, research is always in progress.

Learn more [biomedcentral.com/submissions](https://biomedcentral.com/submissions)

