

**Research article**

**Endozoochory of aquatic ferns and angiosperms by mallards  
in central Europe**

Ádám Lovas-Kiss<sup>1\*</sup>, Balázs Vizi<sup>1</sup>, Orsolya Vincze<sup>2,3</sup>, Attila Molnár V.<sup>1</sup>, Andy J. Green<sup>4</sup>

<sup>1</sup>Department of Botany, University of Debrecen, Egyetem sq. 1., H-4032, Debrecen, Hungary

<sup>2</sup>Department of Evolutionary Zoology and Human Biology, University of Debrecen, H-4032 Debrecen, Egyetem sq. 1., Hungary

<sup>3</sup>Evolutionary Ecology Group, Hungarian Department of Biology and Ecology, Babeş-Bolyai University, RO–400006 Cluj Napoca, Clinicilor Street 5–7., Romania

<sup>4</sup>Department of Wetland Ecology, Estación Biológica de Doñana, EBD-CSIC, Américo Vespucio 26, 41092 Sevilla, Spain

\* Author for correspondence (email: [epipactispalustris@gmail.com](mailto:epipactispalustris@gmail.com))

SHORT TITLE: Fern endozoochory by mallards

**ABSTRACT**

1. Modern literature on plant dispersal by birds focuses mainly on the importance of frugivory and scatter-hoarding, yet recent studies show that endozoochory by migratory waterbirds is an important mechanism of long-distance dispersal for a broad range of plants. Nevertheless, there is a lack of empirical field studies that identify the plants dispersed by waterbirds in a comprehensive manner. In particular, so far there are no detailed studies of the level of spatial variation in the plant taxa dispersed by a waterbird vector, and no clear demonstration that aquatic ferns can be dispersed by endozoochory. Consequently, we remain ignorant of the networks of dispersal interactions between granivorous waterbirds and plants.

2. Five sets of faecal samples (total n = 215) were collected from mallards *Anas platyrhynchos* on autumn migration in the Hevesi-holm and Balaton regions in Hungary, central Europe. Intact diaspores were extracted, identified and their germinability assessed under standard conditions. The plant communities recorded at different sites were compared with PERMANOVA and other multivariate methods.

3. Macrospores of the floating watermoss *Salvinia natans* were recorded in 32 samples, and a total of 16 macrospores germinated, providing the first field demonstration of endozoochory of ferns by birds. Of 21

angiosperm taxa recorded (of which 8 germinated), 13 were terrestrial species, although the most abundant taxa were aquatic species such as the alkali bulrush *Bolboschoenus maritimus* and the sago pondweed *Potamogeton pectinatus*. Two naturalized alien species, the common fig *Ficus carica* and the hackberry *Celtis occidentalis* were also recorded. Only four of the taxa had an endozoochory syndrome. The plant taxa dispersed varied at two different spatial scales, with minor but significant differences between samples from sites separated by less than 1 km, and major differences between the two regions separated by approximately 220 km.

4. *Synthesis*. This is a unique study of the spatial variation in plants dispersed by endozoochory by a migratory waterfowl species with a high taxonomic resolution, with the first demonstration of avian endozoochory of ferns. We recorded eight taxa not previously reported as dispersed by mallards, showing how more empirical studies are essential so we can understand which plants are dispersed by migratory birds. We found evidence that networks of interactions between granivorous waterbird vectors and dispersed plants vary spatially.

#### KEYWORDS

*Anas platyrhynchos*, aquatic plant ecology, aquatic fern, dabbling ducks, endozoochory, granivory, macrospore, *Salvinia natans*, seed dispersal, waterfowl

## INTRODUCTION

Research to date on avian dispersal of plants has focused mainly on frugivory or on scatter-hoarding (Forget et al., 2011; Vander Wall & Moore, 2016; Pesendorfer et al., 2016). However, both classic and more recent research has shown that migratory waterfowl can disperse a broad range of other plants by endozoochory (De Vlaming & Proctor, 1968; van Leeuwen, van der Velde, van Groenendael & Klaassen 2012; Green, Soons, Brochet & Kleyheeg 2016). These include angiosperms whose diaspores lack any obvious morphological adaptations for long-distance dispersal (Costea et al., 2016; Soons, Brochet, Kleyheeg & Green 2016). Nevertheless, only a handful of studies have considered which plants are actually dispersed in the field via gut passage by widespread waterfowl species such as mallards *Anas platyrhynchos* (e.g. Charalambidou & Santamaría, 2005; Green, Frisch, Michot, Allain & Barrow 2013; Wilkinson, Lovas-Kiss, Callaghan & Green 2017). Since morphological syndromes do not allow us to predict *a priori* which plants are dispersed (Soons et al., 2016), there is an urgent need for extensive field studies so that we can begin to characterize the networks of dispersal interactions between waterbirds and plants.

Even the broad taxonomic diversity of plants dispersed by waterfowl is currently unclear (Green et al., 2016). It has only recently been demonstrated that waterfowl disperse viable bryophyte fragments by endozoochory (Wilkinson et al., 2017). Despite long-standing speculation about the potential of aquatic ferns to disperse via waterbirds (Ridley, 1930; Reynolds, Miranda & Cumming 2015), this has never been conclusively demonstrated. Laboratory experiments support the potential for epizoochory of *Azolla* over short distances (Coughlan, Kelly & Jansen 2017), and the potential for endozoochory of *Marsilea* (Malone & Proctor, 1965).

Mallards are important plant vectors both during seasonal, migratory movements (Viana, Santamaría, Michot & Figuerola 2013) and during daily movements within a landscape (Kleyheeg, Treep, De Jager, Nolet & Soons 2017). However, no previous studies have considered in detail what spatial differences there are between different waterbodies in the plants that mallards or other waterbirds disperse by endozoochory (i.e. equivalent to studies comparing frugivore-plant dispersal interactions in nearby forest patches; Bascompte & Jordano, 2007). In this study, our aim is to quantify and compare endozoochory of aquatic and terrestrial plants by mallards on autumn migration at different wetlands of Hungary, central Europe. We identify diaspores deposited in faeces with a high taxonomic resolution, assess the germinability of diaspores and analyze the extent of spatial variation in the dispersal of different plant taxa. We also provide the first demonstration of endozoochory of aquatic ferns. We consider how many of the taxa recorded were not previously known to be dispersed by ducks, and the implications of our results for long-distance dispersal processes.

## MATERIAL AND METHODS

### *Study area and sample processing*

Sampling was carried out in two different regions of Hungary, the Hevesi-holm and the riviera of Lake Balaton (Fig. 1). Five sets of faecal samples were collected in the autumn of 2016 with a combined total of 215 samples. In the Balaton region, we collected 90 samples on the 20th (n = 52) and 23th of October (n = 38) from two adjacent sites on the northern shore of Lake Balaton (46.9141° N, 17.89270° E; 46.91736° N, 17.8929° E), and 25 samples on 21th October at the Tihany Inner-Lake (46.90783° N, 17.88707° E). In the Hevesi-holm region, we collected 50 samples on 20th September from Lake Tisza (47.643938 N, 20.660793 E), and 50 samples from the Tisza River (47.60477° N, 20.71102° E) (Fig. 1). All the locations are situated within protected areas, Natura 2000 sites and BirdLife Important Bird Areas.

Lake Balaton is the largest (596 km<sup>2</sup>) freshwater lake in central Europe, but has a mean depth of only 3.2 m (Istvánovics et al., 2007). It is c.18,000 years old (Cserny & Nagy-Bodor, 2000), and its trophic state has changed from meso- to eutrophic over the last millennium (Korponai et al., 2011). The northern shore is covered with reed (*Phragmites australis*) and *Typha* beds, with extensive submerged macrophytes. The nearby Tihany Inner-lake (0.2 km<sup>2</sup>) is a highly eutrophic volcanic lake covered with reed (*Ph. australis*) and other emergent plants.

Lake Tisza is a reservoir which is usually drained in the late autumn then filled again in the spring with water from the Tisza River. It covers 127 km<sup>2</sup> with average depth varying from 0.7 m and 2.5 m in the shallow bays. Our samples were collected from one of the shallowest bays, which is largely covered by reed (*Ph. australis*) and is rich in submerged and emergent macrophytes (Király, Molnár, Bölöni, Csiky & Vojtkó 2008). The lake is connected to the Tisza River by several channels. The banks of the Tisza River are largely covered by willow-groves and poplar plantations invaded by the false indigo bush (*Amorpha fruticosa*) (Király et al., 2008). During our sampling visits, some mallards were seen feeding within floating mats of the floating watermoss, *Salvinia natans*, at the Lake Tisza and Tisza River sites.

Monospecific flocks of resting mallards likely to be on migration (see discussion) were located on the shoreline of the study sites. Fresh faecal material was then collected early in the morning from the points where birds were resting, immediately after they were flushed by our approach, leaving at least one meter distance between samples to minimize the risk of sampling the same individual repeatedly. The faecal samples were immediately examined, removing any contamination from soil or vegetation from the sample using tweezers, then placed in

zip-lock plastic bags. The samples were then kept in the fridge (4°C) until subsequent laboratory investigations, which were completed within 6 months. Faecal samples were weighed on a balance (Ohaus EP213C Explorer® Pro), then washed on a 100 µm sieve using deionized water before inspection under a binocular microscope. Intact diaspores, for which no cracks or missing parts were detectable, were collected and quantified. Angiosperm seeds were photographed and identified based on their shape, size, colour and seed coat pattern following recent literature (Cappers, Bekker & Jans 2012; Bojnanský & Fargašová, 2007). Fern macrospores were identified following Weijdemans, Brinkkemper, Peeters and Geel (2011). Dispersal syndromes for each taxon were taken from the plant trait database Baseflore (Julve, 1998). Diaspores were then placed in an Eppendorf® tube filled with deionized water until germination trials. Germinability tests were conducted on Petri-dishes filled with nutrient-free Agar gel for terrestrial plants, and in tissue plates filled with deionized water for aquatic plants (Araceae, Haloragaceae, Potamogetonaceae, Salviniaceae). These were then placed in germination chambers set at 12 h of light at 24 °C, and 12 h of darkness at 18 °C. Germination tests were run for 54 days.

### *Statistical analysis*

To compare the number of intact diaspores of a given taxon in the five sets of samples, we used Kruskal-Wallis H test. This test was only performed for those taxa with diaspores recorded in a combined total of at least six faecal samples. Where significant differences were detected, we used Dunn's test (Dinno, 2017) to identify which sites differed significantly.

Several additional analyses were conducted using functions implemented in the R package 'vegan'. In order to analyse differences among plant community compositions recorded at the five sites, we used non-parametric permutational ANOVA (i.e., PERMANOVA; Anderson, 2001) using the *adonis* function. The latter analysis was based on a Bray-Curtis dissimilarity matrix, composed of values between 0 and 1 reflecting the degree of dissimilarity among the five sites. Using these analyses, we inspected the differences in community compositional centroids among sites, but further analyses were performed to inspect differences in group homogeneities, using the function *betadisper* (Anderson, 2006). Using the latter procedure, we calculated the degree of dispersion of each sample from the compositional centroid at each sampling site. This procedure is often referred to as a test for difference in  $\beta$  diversity among the sampling sites. Tukey's HSD tests were used to determine which sites differed in  $\beta$  diversity. Additionally, a posteriori analysis was performed, using the function *simper*, to identify community members that significantly contributed to among-site differences. To

establish statistical significance, the empirical p value of each variable was calculated using 1000 random permutations. Rarefaction analysis showed that our results were not strongly influenced by the differences in number of samples between sites (Fig. S1).

Graphical presentation of the among-sites differences was conducted using principal coordinates analyses, performed using the *cmdscale* function on the above mentioned Bray-Curtis dissimilarity matrix. All statistical analyses were conducted in R statistical software package (version 3.3.2; R Core Team, 2017). Adonis, betadisper and simper functions were implemented in R package *vegan* (version 2.4-3., Oksanen et al., 2017), while Tukey's HSD and *cmdscale* were implemented in R package *stats* (version 3.4.0, R Core Team, 2017). These analyses were run after excluding samples that contained no diaspores.

## RESULTS

The mean mass of fresh faecal samples was  $3.721 \text{ g} \pm 0.185$  (mean  $\pm$  s.e.). A total of 1327 intact diaspores were found from the 215 samples, belonging to 22 plant species, including 21 angiosperms and an aquatic fern (381 macrospores of *Salvinia natans*, Table 1). These taxa represent 15 families (Table 1), with five families of aquatic plants (including 3 submerged, 2 floating and 4 emergent taxa), and 10 families of terrestrial plants (13 taxa). Only four of these 22 taxa are recognized as having an "endozoochory syndrome" (Table 2).

Almost half the diaspores (47%) were retrieved from the two sets of samples from Lake Balaton, which included 484 seeds of common fig (*Ficus carica*, naturalized alien, Uotila 2011b, Table 1). Fig trees are very abundant around Lake Balaton and were present at the sampling sites (Király et al., 2008). The hackberry *Celtis occidentalis*, a park tree from North America that is a widespread naturalized alien in Hungary (Uotila, 2011a, Bartha et al., 2015), was represented by one seed. All other plant taxa recorded were native to Hungary. Most plant taxa recorded were rare, with seven taxa represented by only one seed, and another four taxa recorded only in a single sample (Table 1). Overall, 33% of faecal samples contained at least one diaspore (Table 1).

Propagules of three plant species were recorded in more than five faecal samples: the alkali bulrush *Bolboschoenus maritimus*, the sago pondweed *Potamogeton pectinatus* and *Salvinia natans* (Table 1). Diaspore numbers of these three taxa differed significantly among the sampling sites (*B. maritimus*  $\chi^2 = 38.33$ ,  $df = 4$ ,  $P < 0.0001$ ; *P. pectinatus*  $\chi^2 = 10.59$ ,  $P = 0.032$ ; *S. natans*  $\chi^2 = 47.27$ ,  $P < 0.0001$ ). For *B. maritimus*, significantly more diaspores were recorded at the Tihany Inner-Lake and at Balaton II than at the other three sampling sites (Table 1). Significantly more *P. pectinatus* seeds were recorded from the Tihany Inner Lake than at the Lake

Tisza and at Balaton II sampling sites. We only found *S. natans* macrospores at the two neighbouring sites in the floodplain of the Tisza river, with significantly more diaspores than in the other sites (Table 1.).

According to PERMANOVA, the species compositional centroids differed significantly among sampling sites ( $df = 1$ ,  $F = 18.381$ ,  $P < 0.0001$ , Fig. 2). The *simper* post-hoc test indicated that *Salvinia natans*, *Bolboschoenus maritimus*, *Ficus carica* and *Cyperus fuscus* were the taxa that made the highest contribution to the among-sites dissimilarities. The  $\beta$ -diversity of the propagules found in the samples differed significantly among the sampling sites, according to the results of betadisper ( $df = 4$ ,  $F = 4.31$ ,  $p = 0.0036$ ). Tukey's HSD test showed significant  $\beta$ -diversity difference ( $P = 0.0034$ ) between the Balaton II and Lake Tisza sites.

Out of the 22 species of plants recorded in the faecal samples, diaspores from nine taxa germinated. Overall, 4% of all diaspores germinated. Three taxa had particularly high viability (*Bolboschoenus maritimus* 25%, *Eleocharis palustris* 31% and *Ranunculus sceleratus* 25%, Table 2). Sixteen *Salvinia natans* macrospores germinated (4% of the total, Fig. 3). All taxa with over 20 diaspores detected in the faecal samples contained viable seeds (as shown by the germination tests), with the notable exception of *Ficus carica* represented by over 400 seeds in the samples (Table 2).

## DISCUSSION

We have demonstrated endozoochory for aquatic ferns and a range of angiosperm taxa by migratory waterfowl in central Europe, and the germinability of all abundant taxa apart from cultivated figs. Although we do not know the distance involved, the diaspores were undoubtedly moved by the mallards between ingestion at feeding sites and egestion at the roost sites sampled (see Kleyheeg et al. 2017 for typical examples of daily movements for mallards not on migration). In terms of the number of faecal samples processed and the diversity and level of identification of intact diaspores recorded, this study represents the most detailed field study of endozoochory by mallards to date (see Green et al., 2016 for review). It is also the first to make a detailed comparison of the spatial variation in plants dispersed. Our results illustrate the importance of mallards as a vector of dispersal for widely distributed (e.g. *Polygonum aviculare*, *Cyperus fuscus*, Bartha et al., 2015) and rare (*Myriophyllum verticillatum*, Bartha et al., 2015) plant species, as well as naturalized aliens (*Celtis occidentalis*, Uotila, 2011a). Another naturalized alien *Ficus carica* (Uotila, 2011b) had the highest number of seeds in our study, but none germinated because this cultivar produces their fruits parthenocarpically and these have non-viable seeds in Hungary. *B. maritimus* and *P. pectinatus* were the angiosperms recorded in the highest number of samples.

Seeds of both these subcosmopolitan species have often been recorded in the diet of ducks (Soons et al., 2016) and have been used as models for experimental studies of endozoochory (Santamaría et al., 2003; Espinar, Garcia, Figuerola, Green & Clemente 2004; Brochet, Guillemain, Gauthier-Clerc, Fritz & Green 2010). Modelling based on banding recoveries and feeding experiments suggests that, during migrations, mallards can disperse seeds of these taxa and of *Schoenoplectus lacustris* (which we also recorded) over extraordinary distances with maxima exceeding 400 km (Viana et al., 2013).

We sampled mallards during the autumn migration period when birds move through Hungary towards wintering grounds in the eastern Mediterranean and Black Sea regions (Wetlands International, 2017). Ringing recoveries connect mallards in Hungary with sites over 1600 km away in Russia and France (Faragó, 2009). In the Lake Balaton area, mallard numbers increase during autumn migration from less than 500 individuals in early September to c. 2700 individuals in October, before decreasing again to c.1000 in November (Bankovics, 1997). The entire Hungarian mallard population was estimated to contain around 40,000 individuals in October 2014 (Faragó, Jánoska, Hajas & Kovács 2016), and is part of the Eastern Europe/Black Sea & Eastern Mediterranean flyway population of c.2 million birds (Wetlands International, 2017). Given the number of mallard individuals present in our study area, the plant taxa we recorded are likely to undergo regular long-distance dispersal events along migratory flyways via endozoochory (Viana et al. 2013; Viana, Santamaría & Figuerola 2016).

The proportion of samples containing at least one propagule was similar to that observed in previous studies of waterfowl (van Leeuwen et al., 2012). From our 22 taxa recorded, diaspores of six (27%) were not previously recorded in the diet of European dabbling ducks, and a further two species were not previously reported from mallards (Soons et al., 2016, Table I). This illustrates how much remains to be learned about which plants are dispersed through endozoochory by migratory waterfowl. This is vital knowledge, as these vectors are particularly able to provide the long-distance dispersal required e.g. for redistribution in response to global change (Viana et al., 2016).

In the plant trait database Baseflore (Julve, 1998), most of these 22 species were assigned to dispersal syndromes based on water, wind or self-dispersal (Table 2.). These mechanisms provide much lower maximum dispersal distances than those provided by endozoochory (Bullock et al., 2017). It is notable how mallards disperse trees such as the Silver birch *Betula pendula* or the European hornbeam *Carpinus betulus* that are generally assumed to be wind-dispersed. We have seen mallards searching for and taking birch seeds as they are blown onto the water surface, and also feeding on them when they are concentrated at the shoreline by wave action (Fig. 4). Only four plant species with a fleshy fruit were assigned to an endozoochory syndrome. The majority of taxa we



recorded were terrestrial plants, supporting the findings of Soons et al. (2016) in a meta-analysis of the diet of European dabbling ducks. Nevertheless, diaspores of aquatic taxa were generally more abundant, and all three taxa found in six or more samples were aquatic. Most (55%) of the plant taxa we recorded were only recorded in one or two samples. Thus, we would need to study many more samples to record all the plant taxa dispersed by mallards using our study sites, as indicated by rarefaction analyses of mallard gut contents at other European sites (Soons et al., 2016).

At the level of individual plant taxa, significant differences in diaspore numbers did not fully coincide with the spatial divide between samplings from the Hevesi-holm and those from the Lake Balaton region further west. We even found significant differences in the frequency of *B. maritimus* between two samplings at Lake Balaton separated by 373 m and by three days. Patchy distribution of seeds in the environment and individual variation in feeding behaviour or movements of ducks (e.g. Green, 1998; Kleyheeg et al., 2017) can translate into important variation in dispersal processes at a fine scale. There was only a clear geographical separation for *S. natans*, which was restricted to the Hevesi-holm (Table 1). *Salvinia natans* is mainly found around the big rivers in Hungary, and is absent from the Lake Balaton area (Bartha et al., 2015). On the other hand, when the whole community of plant diaspores was analysed, there was a clear separation between the eastern and western sample sets (Fig. 2), which is likely to reflect important differences in the plant communities present in the two study regions. However, sampling in the Lake Balaton and Hevesi-holm regions was conducted a month apart, so the spatial differences observed may have been confounded with this temporal change.

Our finding of viable macrospores of the pteridophyte *Salvinia natans* is very important, as this represents the first demonstration of avian endozoochory of viable fern diaspores in the wild. Most fern diaspores are dispersed by wind, and a smaller fraction by water (Sharpe, Mehltreter & Walker 2010). A few previous studies have demonstrated endozoochorous dispersal of ferns by other animals, including slugs and insects (Boch et al., 2013; Boch, Berlinger, Prati & Fischer 2016). Fern spores have been shown experimentally to remain viable after passage through the gut of large bats (Sugita, Ootsuki, Fujita, Murakami & Ueda 2013). Dispersal of viable spores by endozoochory has also been demonstrated in the field for mice (Arosa, Ramos, Quintanilla & Brown, 2010) and reindeer (Bråthen et al., 2007).

We have demonstrated the viability of fern diaspores after avian gut passage for one fern species, but there is evidence to suggest that birds are also vectors for other aquatic and terrestrial ferns. Extinct and extant birds have sometimes been reported to ingest fern sporangia or spores (James & Burney, 1997; Arosa et al., 2009; Mehltreter et al., 2010). Malone and Proctor (1965) did experimental feeding trials with mallards and four other

waterbird species using the hairy waterclover *Marsilea vestita*, and recorded passage of intact sporocarps among all bird species. A *Marsilea* sporocarp was recorded from the gizzard of a killdeer (*Charadrius vociferus*) collected in Texas (De Vlaming & Proctor, 1968). It has often been suggested that waterbirds can disperse the alien fern *Azolla filiculoides* (Reynolds & Cumming, 2015), and there is experimental support for epizoochory over distances of a few metres (Coughlan et al., 2017). *Azolla filiculoides* megasporocarps were found in faecal samples of swans and coots in the field, but the viability of the spores was not established (Green, Jenkins, Bell, Morris & Kingsford 2008). Dispersal of ferns as nest material by hummingbirds has also been reported (Osorio-Zuniga, Fonturbel & Rydin 2014).

*Salvinia natans* is a widespread Eurasiatic taxon, with the major populations in central and eastern Europe and Asia, extending to Southern Europe and Northern Africa (Allen, 2011). It is an alien species in Cuba and Jamaica (Allen, 2011), and the states of New York and Massachusetts (<https://plants.usda.gov/>). Ridley (1930) considered *S. natans* to be too large to be dispersed by birds via epizoochory, but speculated that “as the species often occur in isolated pools, it is probable that their spores are somehow transported by birds”. Over 80 years later we have confirmed his suspicion.

In central Europe, *S. natans* produces male micro- and female macrospores within sporocarps from late August to late September, with the release of sporocarps into the water beginning in late September (Gałka & Szmeja, 2013). When not eaten by birds, the sporocarps eventually sink to the bottom of the water column, and during winter the sporocarp walls disintegrate within the sediments. In April, the spores rise up to the water surface and begin to form gametophytes. In late April, the female gametophyte develops archegonia and the male gametophyte develops the antheridia. After fertilisation occurs, the zygote forms and produces the sporophyte (Gałka & Szmeja 2013). When placed for germination, the macrospores we extracted from faeces initially sank to the bottom of our tissue plates, but most floated to the surface after germination. Our laboratory conditions are likely to have accelerated their germination. After surviving gut passage in nature, it is possible that the macrospores delay germination until spring when day length and temperatures increase. When plants germinate sooner because of gut passage, there can be benefits from reduced intraspecific competition, or costs from increased exposure to herbivory (Figuerola & Green, 2004). In our faecal samples, we found only female macrospores, which produced gametophytes with archegonia (Fig. 3). We recorded none of the male microspores that *S. natans* also produces, probably because the microspores are less than 20 µm in diameter (Lawalrée, 1964) and passed through our sieve. It is likely that microspores are also dispersed by mallards when

they ingest sporocarps. We found no intact sporocarps in the faeces, and they are likely to have been broken within the gizzard.

In conclusion, this study illustrates how much our understanding of plant dispersal can be advanced by focused research on migratory waterfowl as vectors. We can now construct effective spatial models on the dispersal of plants by waterfowl (Viana et al., 2016, Kleyheeg et al., 2017), but we still have very limited information as to which plants are dispersed by which waterbird species. Endozoochory in nature goes well beyond the “endozoochory syndrome”, so we cannot simply rely on syndromes if we wish to predict how plants can disperse and these mechanisms relate to plant distributions. Our study provides a unique insight into the networks of dispersal interactions between waterbirds and plants, and the extent of spatial variation that exists in these networks. However, it focuses on the mallard as a particularly abundant and widespread vector, and future work must compare the plants dispersed by other duck and waterbird species in an equally comprehensive manner so that plant-vector networks can be fully characterized, and we can begin to understand the extent of functional redundancy between vectors.

#### ACKNOWLEDGEMENTS

We are very grateful to Viktor Löki for assistance in the field, Attila Takács for help with the literature and to Erik Kleyheeg and one anonymous referee for their valuable comments during the review process. This research was supported by Spanish Ministerio de Economía, Industria y Competitividad project CGL2016-76067-P (AEI/FEDER, EU to AJG), OTKA K108992 Grant (to AMV) and by the ÚNKP-17-3-I-DE-385 New National Excellence Program of the Ministry of Human Capacities (to ÁL-K). OV was supported by the Hungarian Eötvös Scholarship (MÁEÖ2017\_16/156845) awarded by the Tempus Public Foundation and by the Ginko Investments Ltd.

#### AUTHORS' CONTRIBUTIONS

ÁLK and AJG conceived the ideas and designed methodology; ÁLK and BV collected the data; ÁLK and OV analysed the data; ÁLK, AMV and AJG led the writing of the manuscript. All authors contributed critically to the drafts and gave final approval for publication.

#### DATA ACCESSIBILITY

All sample data used in the analyses are available from Dryad – <http://dx.doi.org/10.5061/dryad.5jg1t> (Lovas-Kiss et al. 2015)

## REFERENCES

- Allen, D. J. (2011). *Salvinia natans*. The IUCN Red List of Threatened Species 2011: e.T163996A5688211. doi: 10.2305/IUCN.UK.2011-2.RLTS.T163996A5688211.en. (Accessed 21.07. 2017).
- Anderson, M. J. (2001). A new method for non-parametric multivariate analysis of variance. *Austral Ecology*, 26, 32–46. doi: 10.1111/j.1442-9993.2001.01070.pp.x
- Anderson, M. J. (2006) Distance-based tests for homogeneity of multivariate dispersions. *Biometrics*, 62, 245–253. doi: 10.1111/j.1541-0420.2005.00440.x
- Arosa, M. L., Ramos, J. A., Quintanilla, D., Brown, L. G. (2010). First report of fern (*Culcita macrocarpa*) spore consumption by a small mammal (*Apodemus sylvaticus*). *Mammalian Biology*, 75, 115–121. doi: 10.1016/j.mambio.2009.05.009
- Arosa, M. L., Ramos, J. A., Valkenburg, T., Ceia, R., Laborda, H., Quintanilla, L. G., & Heleno, R. (2009). Fern feeding ecology of the Azores Bullfinch *Pyrrhula murina*: The selection of fern species and the influence of nutritional composition in fern choice. *Ardeola*, 56, 71–84.
- Bankovics, A. (1997). Data on some passage migrant Anatids at the Lake Balaton. *Miscellanea Zoologica Hungarica*, 11, 89–94.
- Bartha, D., Király, G., Schmidt, D., Tiborcz, V., Barina, Z., Csiky, ... Zólyomi, Sz. (eds.) (2015). Distribution atlas of vascular plants of Hungary. Sopron: University of West Hungary Press.
- Bascompte, J., & Jordano, P. (2007). Plant-animal mutualistic networks: The architecture of biodiversity. *Annual Review of Ecology Evolution and Systematics*, 38, 567–593. doi: 10.1146/annurev.ecolsys.38.091206.095818
- Boch, S., Berlinger, M., Fischer, M., Knop, E., Nentwig, W., Türke, M. & Prati, D. (2013). Fern and bryophyte endozoochory by slugs. *Oecologia*, 172, 817–822. doi: 10.1007/s00442-012-2536-0
- Boch, S., Berlinger, M., Prati, D., & Fischer, M. (2016). Is fern endozoochory widespread among fern-eating herbivores?. *Plant Ecology*, 217(1), 13–20. doi: 10.1007/s11258-015-0554-9
- Bojnanský, V., & Fargašová, A. (2007). *Atlas of seeds and fruits of Central and East-European flora: the Carpathian Mountains region*. Berlin: Springer.
- Bråthen, A. K., González, V. T., Iversen, M., Killengreen, S., T. Ravolainen, V., A. Ims, R., & G. Yoccoz, N. (2007). Endozoochory varies with ecological scale and context. *Ecography*, 30, 308–320. doi: 10.1111/j.0906-7590.2001.04976.x
- Brochet, A. L., Guillemain, M., Gauthier-Clerc, M., Fritz, H., & Green, A. J. (2010). Endozoochory of Mediterranean aquatic plant seeds by teal after a period of desiccation: Determinants of seed survival and

344 influence of retention time on germinability and viability. *Aquatic Botany*, 93, 99–106. doi:  
 345 10.1016/j.aquabot.2010.04.001  
 346 Bullock, J. M., Gonzalez, L. M., Tamme, R., Gotzenberger, L., White, S. M., Partel, M., & Hooftman, D. A. P.  
 347 (2017). A synthesis of empirical plant dispersal kernels. *Journal of Ecology*, 105, 6–19. doi: 10.1111/1365-  
 348 2745.12666  
 349 Cappers, R. T., Bekker, R. M., & Jans, J. E. (2012). *Digitale Zadenatlas van Nederland/Digital seed atlas of the*  
 350 *Netherlands*. Vol. 4. Groningen: Barkhuis.  
 351 Charalambidou, I., & Santamaría, L. (2005). Field evidence for the potential of waterbirds as dispersers of  
 352 aquatic organisms. *Wetlands*, 25(2), 252–258. doi: 10.1672/2  
 353 Costea, M., Stefanović, S., García, M. A., De La Cruz, S., Casazza, M. L., & Green, A. J. (2016). Waterfowl  
 354 endozoochory: An overlooked long-distance dispersal mode for *Cuscuta* (dodder). *American Journal of Botany*,  
 355 103(5), 957–962. doi: 10.3732/ajb.1500507  
 356 Coughlan, N. E., Kelly, T. C. & Jansen, M. A. K. (2017). "Step by step": high frequency short-distance  
 357 epizoochorous dispersal of aquatic macrophytes. *Biological Invasions*, 19, 625–634. doi: 10.1007/s10530-016-  
 358 1293-0  
 359 Cserny, T. & Nagy-Bodor, E. (2000). Limnogeological investigations on Lake Balaton. In: Gierlowski-  
 360 Kordesch, E., Kelts, K. (Eds.), *Lake Basins Through Space and Time*. AAPG Studies in Geology, 46, 60–618.  
 361 De Vlaming, V., & Proctor, V. W. (1968). Dispersal of aquatic organisms: viability of seeds recovered from the  
 362 droppings of captive killdeer and mallard ducks. *American Journal of Botany*, 55(1), 20–26. doi:  
 363 10.2307/2440487  
 364 Dinno, A. (2017). dunn.test: Dunn's Test of Multiple Comparisons Using Rank Sums. R package version 1.3.4.  
 365 Available online at: <https://CRAN.R-project.org/package=dunn.test> (Accessed 27. 07. 2017)  
 366 Espinar, J. L., García, L. V., Figuerola, J., Green, A. J., & Clemente L. (2004). Helophyte germination in a  
 367 Mediterranean salt marsh: Gut-passage by ducks changes seed response to salinity. *Journal of Vegetation*  
 368 *Science*, 15, 315–322. doi: 10.1111/j.1654-1103.2004.tb02267.x  
 369 Forget, P. M., Jordano, P., Lambert, J. E., Bohning-Gaese, K., Traveset, A., & Wright, S. J. (2011). Frugivores  
 370 and seed dispersal (1985-2010); the 'seeds' dispersed, established and matured. *Acta Oecologica*, 37, 517–520.  
 371 doi: 10.1016/j.actao.2011.09.008

372 Faragó S. (2009). Tőkés réce In: Csörgő T., Karcza Z., Halmos G., Magyar G., Gyurácz J., Szép T., ... Schmidt  
 373 E. (Eds.), *Magyar Madárvonulási Atlasz. Hungarian Bird Migration Atlas*. (pp. 131–134.). Budapest: Kossuth  
 374 Kiadó. (In Hungarian, with English summary)  
 375 Faragó, S., Jánoska, F., Hajas, P. P., & Kovács, G. (2016). Tőkés réce (*Anas platyrhynchos*) fajkezelési terve  
 376 Magyarországon. Management plan for mallard (*Anas platyrhynchos*) in Hungary. Magyar Vízivad  
 377 Közlemények – Hungarian Waterfowl Publications, 28, 115–156. doi: 0.17242/MVvK\_28.04  
 378 Figuerola, J., & Green, A. J. (2004). Effects of seed ingestion and herbivory by waterfowl on seedling  
 379 establishment: a field experiment with wigeongrass *Ruppia maritima* in Donana, south-west Spain. *Plant*  
 380 *Ecology*, 173, 33–38. doi: 10.1023/B:VEGE.0000026323.56635.4e  
 381 Galka, A., & Szmaja, J. (2013). Phenology of the aquatic fern *Salvinia natans* (L.) All. in the Vistula Delta in the  
 382 context of climate warming. *Limnologica-Ecology and Management of Inland Waters*, 43(2), 100–105. doi:  
 383 10.1016/j.limno.2012.07.001  
 384 Green, A. J. (1998). Comparative feeding behaviour and niche organization in a Mediterranean duck community.  
 385 *Canadian Journal of Zoology-Revue Canadienne De Zoologie*, 76, 500–507. doi: 10.1139/z97-221  
 386 Green, A. J., Frisch, D., Michot, T. C., Allain, L. K., & Barrow, W. C. (2013). Endozoochory of seeds and  
 387 invertebrates by migratory waterbirds in Oklahoma, USA. *Limnetica*, 32(1), 39–46.  
 388 Green, A. J., Jenkins, K. M., Bell, D., Morris, P. J., & Kingsford, R. T. (2008). The potential role of waterbirds  
 389 in dispersing invertebrates and plants in arid Australia. *Freshwater Biology*, 53(2), 380–392. doi:  
 390 10.1111/j.1365-2427.2007.01901.x  
 391 Green, A. J., Soons, M., Brochet, A. L., & Kleyheeg, E. (2016). Dispersal of plants by waterbirds. In  
 392 Şekercioğlu, Ç. H., Wenny, D., Whelan, C. J., & Floyd, C. (Eds.), *Why Birds Matter: Avian Ecological Function*  
 393 *and Ecosystem Services* (pp. 147–195). Chicago, IL: University of Chicago Press. doi:  
 394 10.7208/chicago/9780226382777.001.0001  
 395 Istvánovics, V., Clement, A., Somlyódy, L., Specziár, A., G.-Tóth, L., Padisák, J. (2007). Updating water quality  
 396 targets for shallow Lake Balaton (Hungary), recovering from eutrophication. *Hydrobiologia*, 581, 305–318. doi:  
 397 10.1007/s10750-006-0509-1  
 398 James, H. F., & Burney, D. A. (1997). The diet and ecology of Hawaii's extinct flightless waterfowl: evidence  
 399 from coprolites. *Biological Journal of the Linnean Society*, 62, 279–297. doi: 10.1111/j.1095-  
 400 8312.1997.tb01627.x

401 Julve, P. (1998). *Baseflor. Index botanique, écologique et chorologique de la flore de France*. Lille, France,  
 402 Institut Catholique de Lille. Available online at: <http://perso.wanadoo.fr/philippe.julve/catminat.htm> (Accessed:  
 403 15. 06. 2016)  
 404 Király, G., Molnár, Zs., Bölöni, J., Csiky, J., & Vojtkó, A. (eds.) (2008): Magyarország földrajzi kistájainak  
 405 növényzete. Vácrátót, MTA ÖBKI.  
 406 Kleyer, M., Bekker, R.M., Knevel, I.C., Bakker, J.P, Thompson, K., Sonnenschein, M., ... Peco, B. (2008): The  
 407 LEDA Traitbase: A database of life-history traits of Northwest European flora. *Journal of Ecology*, 96, 1266–  
 408 1274. doi: 10.1111/j.1365-2745.2008.01430.x  
 409 Kleyheeg, E., Treep, J., De Jager, M., Nolet, B. A., & Soons, M. B. (2017). Seed dispersal distributions resulting  
 410 from landscape-dependent daily movement behaviour of a key vector species, *Anas platyrhynchos*. *Journal of*  
 411 *Ecology*, 105, 1279–1289. doi: 10.1111/1365-2745.12738  
 412 Korponai, J., Varga, K.A., Lengré, T., Papp, I., Tóth, A., & Braun, M. (2011). Paleolimnological reconstruction  
 413 of the trophic state in Lake Balaton (Hungary) using Cladocera remains. *Hydrobiologia*, 676, 237–248. doi:  
 414 10.1007/s10750-011-0898-7  
 415 Lawalrée, A. (1964). Salviniaceae. In: Tutin, T.G., Heywood, V.H., Burges, N.A., Valentine, D.H., Walters,  
 416 S.M., & Webb, D.A. (Eds.), *Flora Europaea, Vol. 1*. (pp. 24–25) Cambridge: Cambridge University Press.  
 417 Malone, C. R., & Proctor, V. W. (1965). Dispersal of *Marsilea mucronata* by water birds. *American Fern*  
 418 *Journal*, 55(4), 167–170. doi: 10.2307/1546029  
 419 Lovas-Kiss, Á., Vizi, B., Vincze, O., Molnár V., A., Green, A., J. (2017). Data from: Endozoochory of aquatic  
 420 ferns and angiosperms by mallards in central Europe. Dryad Digital Depository.  
 421 <http://dx.doi:10.5061/dryad.5jg1t>  
 422 Mehltreter, K., Walker, L.R. & Sharpe, J.M. (Eds.). *Fern ecology*. Cambridge: Cambridge University Press. doi:  
 423 10.1017/CBO9780511844898  
 424 Oksanen, J., Blanchet, F. G., Friendly, M., Kindt, R., Legendre, P., McGlinn, D., ... Wagner, H. (2017). *vegan*:  
 425 Community Ecology Package. R package version 2.4-3. Available online at: [https://CRAN.R-](https://CRAN.R-project.org/package=vegan)  
 426 [project.org/package=vegan](https://CRAN.R-project.org/package=vegan) (Accessed 27. 07. 2017)  
 427 Osorio-Zuniga, F., Fonturbel, F. E., & Rydin, H. (2014). Evidence of mutualistic synzoochory between  
 428 cryptogams and hummingbirds. *Oikos*, 123, 553–558. doi: 10.1111/j.1600-0706.2013.01027.x

429 Pesendorfer, M.B., Sillett, T.S., Koenig, W.D. & Morrison, S.A. (2016). Scatter-hoarding corvids as seed  
 430 dispersers for oaks and pines: A review of a widely distributed mutualism and its utility to habitat restoration.  
 431 *Condor*, 118, 215–237. doi: 10.1650/CONDOR-15-125.1  
 432 R Core Team (2017). R: A language and environment for statistical computing. R Foundation for Statistical  
 433 Computing, Vienna, Austria. Available online at: <https://www.R-project.org/> (Accessed 21.07. 2017)  
 434 Ridley, H. N. (1930). The dispersal of plants throughout the world. Ashford, Kent, UK: L. Reeve.  
 435 Reynolds, C., & Cumming, G. S. (2015). The role of waterbirds in the dispersal of freshwater cladocera and  
 436 bryozoa in southern Africa. *African Zoology*, 50, 307–311. doi: 10.1080/15627020.2015.1108164  
 437 Reynolds, C., Miranda, N. A., & Cumming, G. S. (2015). The role of waterbirds in the dispersal of aquatic alien  
 438 and invasive species. *Diversity and Distributions*, 21(7), 744–754. doi: 10.1111/ddi.12334  
 439 Santamaría, L., Figuerola, J., Pilon, J. J., Mjelde, M., Green, A. J., De Boer, T., King, R. A., & Gornall, R. J.  
 440 (2003). Plant performance across latitude: The role of plasticity and local adaptation in an aquatic plant.  
 441 *Ecology*, 84, 2454–2461. doi: 10.1890/02-0431  
 442 Sharpe, J. M., Mehlreter, K. & Walker, L. R. (2010). Ecological importance of ferns. In: Mehlreter, K., Walker,  
 443 L.R. & Sharpe, J.M. (Eds.). *Fern ecology* (pp. 1–21). Cambridge: Cambridge University Press. doi:  
 444 10.1017/CBO9780511844898  
 445 Soons, M. B., Brochet, A. L., Kleyheeg, E., & Green, A. J. (2016). Seed dispersal by dabbling ducks: an  
 446 overlooked dispersal pathway for a broad spectrum of plant species. *Journal of Ecology*, 104(2), 443–455. doi:  
 447 10.1111/1365-2745.12531  
 448 Sugita, N., Ootsuki, R., Fujita, T., Murakami, N., & Ueda, K. (2013). Possible spore dispersal of a bird-Nest fern  
 449 *Asplenium setoi* by Bonin flying foxes *Pteropus pselaphon*. *Mammal study*, 38(3), 225–229. doi:  
 450 10.3106/041.038.0301  
 451 Uotila, P. (2011b): Moraceae. – In: Euro+Med Plantbase - the information resource for Euro-Mediterranean  
 452 plant diversity. Available online at: <http://www.emplantbase.org/home.html> (Accessed 27. 07. 2017)  
 453 Uotila, P. (2011a): Ulmaceae. – In: Euro+Med Plantbase - the information resource for Euro-Mediterranean  
 454 plant diversity. Available online at: <http://www.emplantbase.org/home.html> (Accessed 27. 07. 2017)  
 455 Vander Wall, S. B., & Moore, C. M. (2016). Interaction diversity of North American seed-dispersal mutualisms.  
 456 *Global Ecology and Biogeography*, 25, 1377–1386. doi: 10.1111/geb.12502



457 van Leeuwen, C. H. A., van der Velde, G., van Groenendael, J. M., & Klaassen, M. (2012). Gut travellers:  
 458 internal dispersal of aquatic organisms by waterfowl. *Journal of Biogeography*, 39, 2031–2040. doi:  
 459 10.1111/jbi.12004  
 460 Viana, D. S., Santamaría, L., Michot, T. C., & Figuerola, J. (2013). Migratory strategies of waterbirds shape the  
 461 continental-scale dispersal of aquatic organisms. *Ecography*, 36(4), 430–438. doi: 10.1111/j.1600-  
 462 0587.2012.07588.x  
 463 Viana, D. S., Santamaria, L. & Figuerola, J. (2016). Migratory Birds as Global Dispersal Vectors. *Trends in*  
 464 *Ecology & Evolution*, 31, 763-775. doi: 10.1016/j.tree.2016.07.005  
 465 Weijdem, F., Brinkkemper, O., Peeters, H., & Geel, B. (2011). Early Neolithic human impact on the vegetation  
 466 in a wetland environment in the Noordoostpolder, central Netherlands. *Journal of Archaeology in the Low*  
 467 *Countries*, 3(1–2), 31–46. url: <http://dpc.uba.uva.nl/03/nr01/a02>  
 468 Wetlands International (2017). *Waterbird Population Estimates*. Available online at: [wpe.wetlands.org](http://wpe.wetlands.org) (Accessed  
 469 01. 08. 2017)  
 470 Wilkinson, D. M., Lovas-Kiss, A., Callaghan, D. A., & Green, A. J. (2017). Endozoochory of large bryophyte  
 471 fragments by waterbirds. *Cryptogamie, Bryologie*, 38(2), 223–228. doi: 10.7872/cryb/v38.iss2.2017.223

472 TABLES

473 Table 1. Total number of diaspores (TD), number of samples with diaspores (NS), and maximum number of diaspores in any given sample (Max) for plants  
 474 recorded in five sets of mallard faecal samples. For three taxa recorded in  $\geq 6$  samples, no shared superscript letters in the TD column indicate a statistically  
 475 significant difference between the sites.

| Plants       |  | Tisza River<br>(n=50) |    |     | Lake Tisza<br>(n=50) |    |     | Balaton I.<br>(n=52) |    |     | Balaton II.<br>(n=38) |    |     | Inner-Lake<br>(n=25) |    |     | Total |    |
|--------------|--|-----------------------|----|-----|----------------------|----|-----|----------------------|----|-----|-----------------------|----|-----|----------------------|----|-----|-------|----|
| Family       | Species  | TD                    | NS | Max | TD                   | NS | Max | TD                   | NS | Max | TD                    | NS | Max | TD                   | NS | Max | TD    | NS |
| Salviniaceae | <i>Salvinia natans</i> <sup>3</sup>                | 253 <sup>a</sup>      | 14 | 96  | 128 <sup>a</sup>     | 18 | 39  | - <sup>b</sup>       | -  | -   | - <sup>b</sup>        | -  | -   | - <sup>b</sup>       | -  | -   | 381   | 32 |
| Adoxaceae    | <i>Sambucus nigra</i>                              | -                     | -  | -   | -                    | -  | -   | -                    | -  | -   | -                     | -  | -   | 1                    | 1  | 1   | 1     | 1  |
| Araceae      | <i>Lemna minor</i> <sup>5</sup>                    | -                     | -  | -   | 15                   | 1  | 15  | -                    | -  | -   | -                     | -  | -   | -                    | -  | -   | 15    | 1  |
| Betulaceae   | <i>Betula pendula</i>                              | -                     | -  | -   | -                    | -  | -   | -                    | -  | -   | 2                     | 1  | 2   | -                    | -  | -   | 2     | 1  |
|              | <i>Carpinus betulus</i> <sup>4</sup>               | -                     | -  | -   | -                    | -  | -   | -                    | -  | -   | 1                     | 1  | 1   |                      | -  |     | 1     | 1  |
| Cannabaceae  | <i>Celtis occidentalis</i> <sup>2,3</sup>          | -                     | -  | -   | -                    | -  | -   | -                    | -  | -   | -                     | -  | -   | 1                    | 1  | 1   | 1     | 1  |
| Cyperaceae   | <i>Bolboschoenus maritimus</i>                     | - <sup>a</sup>        | -  | -   | 1 <sup>a</sup>       | 1  | 1   | - <sup>a</sup>       | -  | -   | 45 <sup>b</sup>       | 7  | 18  | 15 <sup>b</sup>      | 8  | 5   | 61    | 16 |
|              | <i>Cyperus fuscus</i> <sup>3</sup>                 | -                     | -  | -   | -                    | -  | -   | -                    | -  | -   | 20                    | 3  | 16  | 166                  | 1  | 166 | 186   | 4  |
|              | <i>Eleocharis palustris</i>                        | -                     | -  | -   | 13                   | 1  | 13  | -                    | -  | -   | -                     | -  | -   | -                    | -  | -   | 13    | 1  |
|              | <i>Schoenoplectus lacustris</i>                    | -                     | -  | -   | 1                    | 1  | 1   | -                    | -  | -   | 53                    | 2  | 33  | -                    | -  | -   | 54    | 3  |
|              | <i>Schoenoplectus tabernaemontani</i> <sup>3</sup> | -                     | -  | -   | -                    | -  | -   | -                    | -  | -   | -                     | -  | -   | 1                    | 1  | 1   | 1     | 1  |
| Fabaceae     | <i>Trifolium pratense</i>                          | -                     | -  | -   | 1                    | 1  | 1   | -                    | -  | -   | -                     | -  | -   | -                    | -  | -   | 1     | 1  |
|              | <i>Myriophyllum verticillatum</i> <sup>4</sup>     | 14                    | 2  | 13  | 42                   | 2  | 37  | -                    | -  | -   | -                     | -  | -   | -                    | -  | -   | 56    | 4  |
| Moraceae     | <i>Ficus carica</i> <sup>1</sup>                   | -                     | -  | -   | -                    | -  | -   | 117                  | 1  | 117 | 367                   | 1  | 367 | -                    | -  | -   | 484   | 2  |



479 Table 2. Number of germinated diaspores (NG) and the total number of diaspores (TD) for each plant taxon for all samples combined, together with the  
480 propagule length and dispersal syndrome.

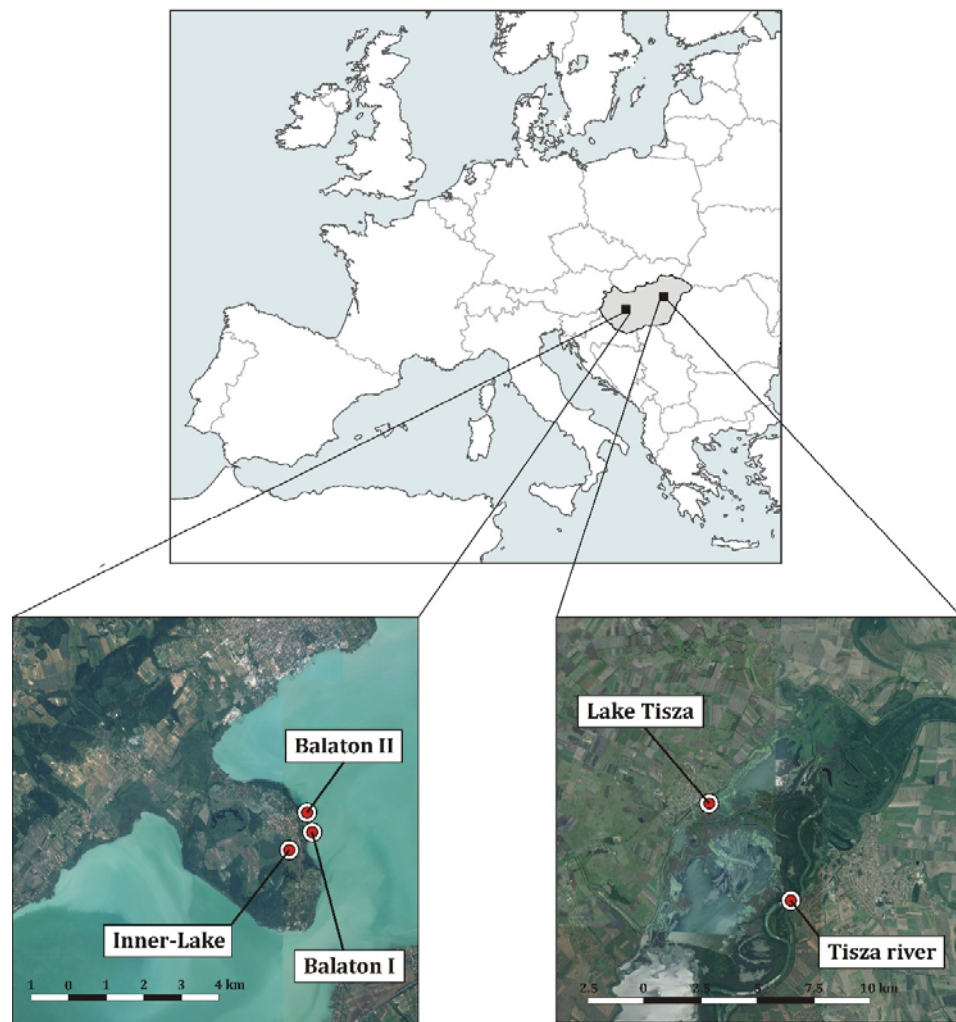
| Plants                  |                                       |                      |               | Samples (n=215) |    |
|-------------------------|---------------------------------------|----------------------|---------------|-----------------|----|
| Family                  | Species                               | Dispersal syndrome * | Length (mm)** | TD              | NG |
| <i>Salvinia</i> aceae   | <i>Salvinia natans</i>                | hydrochory           | 0.6           | 381             | 16 |
| <i>Adoxaceae</i>        | <i>Sambucus nigra</i>                 | endozoochory         | 4             | 1               | 0  |
| <i>Araceae</i>          | <i>Lemna minor</i>                    | hydrochory           | 0.8           | 15              | 0  |
| <i>Betulaceae</i>       | <i>Betula pendula</i>                 | anemochory           | 3.2           | 2               | 0  |
|                         | <i>Carpinus betulus</i>               | anemochory           | 5.77          | 1               | 0  |
| <i>Cannabaceae</i>      | <i>Celtis occidentalis</i>            | endozoochory         | 5.61          | 1               | 0  |
| <i>Cyperaceae</i>       | <i>Bolboschoenus maritimus</i>        | anemochory           | 3.78          | 61              | 18 |
|                         | <i>Cyperus fuscus</i>                 | barochory            | 0.9           | 186             | 4  |
|                         | <i>Eleocharis palustris</i>           | epizoochory          | 1.87          | 13              | 4  |
|                         | <i>Schoenoplectus lacustris</i>       | hydrochory           | 3.2           | 54              | 4  |
|                         | <i>Schoenoplectus tabernaemontani</i> | barochory            | 2.94          | 1               | 0  |
| <i>Fabaceae</i>         | <i>Trifolium pratense</i>             | epizoochory          | 1.9           | 1               | 0  |
| <i>Haloragaceae</i>     | <i>Myriophyllum verticillatum</i>     | hydrochory           | 1.95          | 56              | 4  |
| <i>Moraceae</i>         | <i>Ficus carica</i>                   | endozoochory         | 1.66          | 484             | 0  |
| <i>Plantaginaceae</i>   | <i>Plantago major</i>                 | barochory            | 1.58          | 9               | 0  |
| <i>Poaceae</i>          | <i>Digitaria sanguinalis</i>          | barochory            | 1.75          | 1               | 0  |
|                         | <i>Echinochloa crus-galli</i>         | epizoochory          | 2.84          | 14              | 0  |
| <i>Polygonaceae</i>     | <i>Polygonum aviculare</i>            | barochory            | 1.9           | 5               | 1  |
| <i>Potamogetonaceae</i> | <i>Potamogeton pectinatus</i>         | hydrochory           | 4.05          | 20              | 3  |
|                         | <i>Potamogeton pusillus</i>           | hydrochory           | 2.25          | 6               | 0  |
| <i>Ranunculaceae</i>    | <i>Ranunculus sceleratus</i>          | hydrochory           | 0.84          | 14              | 3  |
| <i>Solanaceae</i>       | <i>Solanum dulcamara</i>              | endozoochory         | 2.28          | 1               | 0  |
| Total                   |                                       |                      |               | 1327            | 57 |

481     \* from the BASEFLOR database (Julve 1998), \*\* from the LEDA database (Kleyer et al. 2008), the Digital seed atlas (Cappers et al. 2012) or from our own  
482     measurements.

483

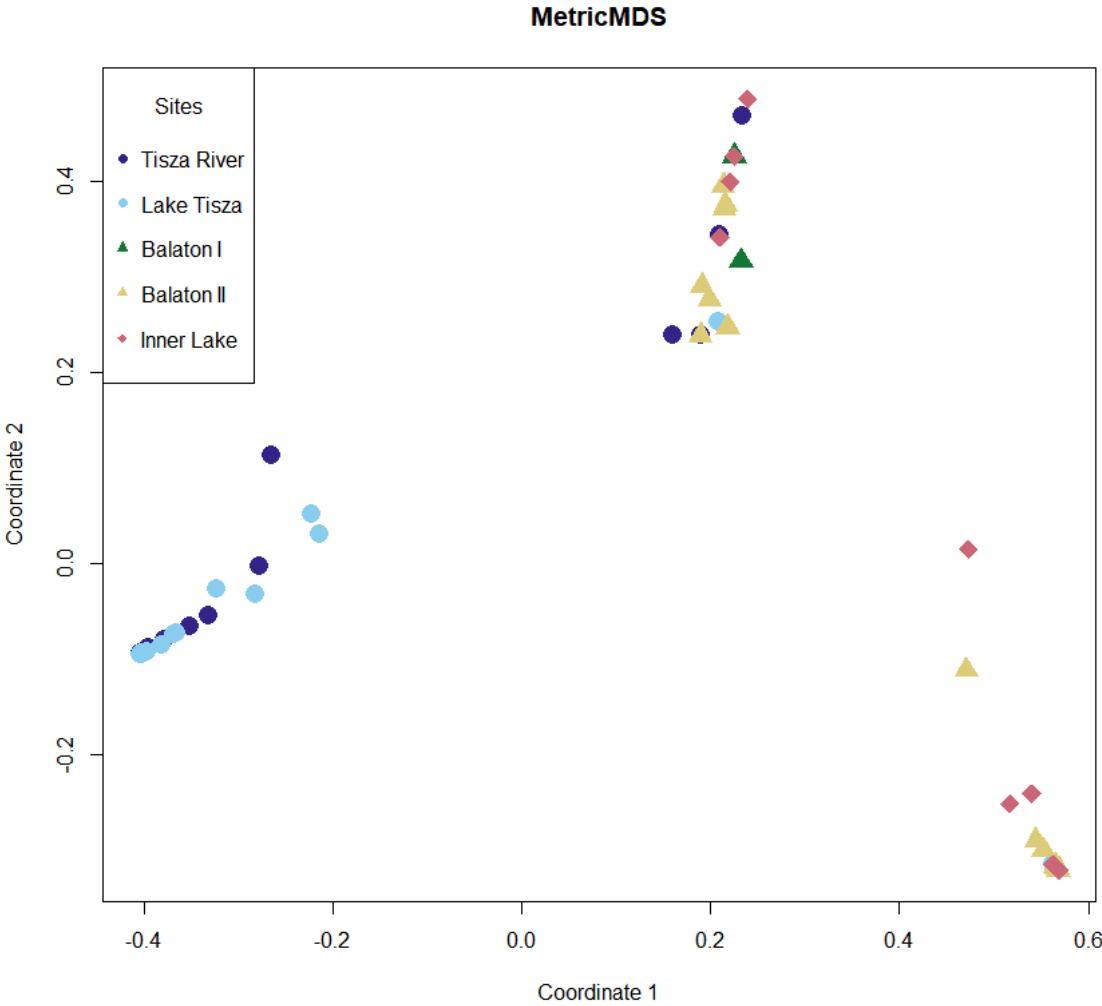
484 **FIGURES**

485 Fig 1. Location of the study areas in Hungary (lower images taken from Google Earth).

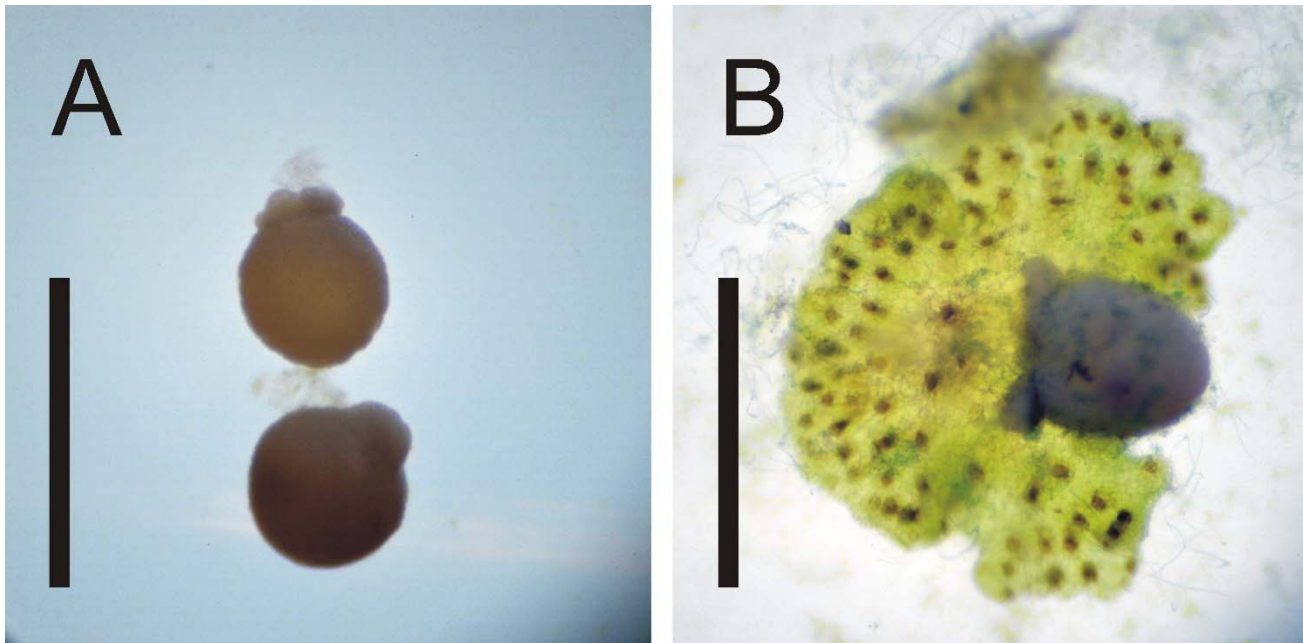


486

487 Fig 2. Ordination based on a Principal Coordinates Analysis of plant communities among the five sample collection sites. The first two PCO axes are shown.



489 Fig 3. Photos of *Salvinia natans* female gametophytes extracted from mallard faeces a) before germination and b) after germination, showing the archegonia  
490 (dark brown dots). The vertical bars represent one mm. Photographed by Á. Lovas-Kiss.





493 Fig 4. Silver birch *Betula pendula* seeds concentrated on a lake shoreline where mallards were feeding. Photographed by A. J. Green.



494