

## The phenotypic features used for distinguishing species within the *Cladonia furcata* complex are highly homoplasious

Raquel PINO-BODAS, Ana R. BURGASZ, María P. MARTÍN, Teuvo AHTI,  
Soili STENROOS, Mats WEDIN and H. Thorsten LUMBSCH

**Abstract:** The *Cladonia furcata* complex treated here comprises *C. farinacea*, *C. furcata*, *C. multififormis*, *C. scabriuscula*, *C. stereoclada*, and *C. subrangiformis*. The well-known taxonomic complexity of this group is caused by wide phenotypic variation and high morphological similarity among the species, for which reason we investigated the distribution in the phylogeny of the phenotypic characters traditionally used to distinguish the species in this complex. A phylogenetic analysis of the *C. furcata* complex is presented here, based on three loci (ITS rDNA, IGS rDNA and *RPB2*), representing specimens from a broad geographical range (Europe, North America and New Zealand). The phylogenetic reconstructions were performed using Maximum Likelihood and Bayesian analyses. In addition, 14 features traditionally used for species delimitation within this complex were mapped onto the Bayesian phylogeny. All the species currently accepted, with the exception of *C. stereoclada*, turned out to be polyphyletic. Most of the phenotypic characters studied are highly homoplasious with the exception of the podetium type. The solid podetia represent a diagnostic character of *C. stereoclada*.

**Key words:** homoplasy, lichen, molecular phylogeny, phenotypic characters

*Accepted for publication 7 May 2015*

### Introduction

It is of great importance in systematics to identify diagnostic characters that make it possible to distinguish species. For a phenotypic trait to be useful as a diagnostic character it has to be constant within a taxon, undergoing only minor changes from environmental modifications (Davis & Heywood 1963; Winston 1999), and preferably easy to recognize (that is, the different states are unambiguous and easily observable). Features of this kind, however, do not seem easy to find;

many of the characters that had been used to circumscribe species in different groups of lichenized fungi are not diagnostic for different phylogenetic lineages (e.g. Lohtander *et al.* 1998; Ott *et al.* 2004; Buschbom & Mueller 2006; Nelsen & Gargas 2009; Velmala *et al.* 2009; Crespo & Lumbsch 2010; Leavitt *et al.* 2011a, b; Lumbsch & Leavitt 2011). One method of assessing whether the phenotypic characters are useful as diagnostic characters is to map them onto the phylogenetic tree of the group under study, and then verify whether the phylogenetically related specimens share the same character states (Scotland *et al.* 2003).

Due to the fact that the genus *Cladonia* embraces a great number of species, many of which are morphologically extremely variable (Ahti 2000; Ahti & Stenroos 2013), the taxonomy of this genus can be considered one of the most intricate within macrolichens. Recent studies based on molecular characters have confirmed this complexity (Stenroos *et al.* 2002; Fontaine *et al.* 2010; Pino-Bodas *et al.* 2011; Steinová *et al.* 2013),

R. Pino-Bodas, T. Ahti and S. Stenroos: Botany Unit, Finnish Museum of Natural History, P.O. Box 7, FI-00014 University of Helsinki, Finland. Email: raquel.pinobodas@helsinki.fi

A. R. Burgas: Departamento Biología Vegetal 1, Facultad de Biología, Universidad Complutense de Madrid, E-28040 Madrid, Spain.

M. P. Martín: Departamento de Micología, Real Jardín Botánico, RJB-CSIC, E-28014 Madrid, Spain.

M. Wedin: Department of Botany, Swedish Museum of Natural History, SE-10405 Stockholm, Sweden.

H. T. Lumbsch: Science & Education, The Field Museum, 1400 S. Lake Shore Drive, Chicago, IL 60605, USA.

indicating that many of the morphological characters used in the taxonomy of the genus are homoplasious and, consequently, that many species accepted on the basis of these characters are not monophyletic.

The present study focused on the *Cladonia furcata* complex, here including *C. farinacea* (Vain.) A. Evans, *C. furcata* (Huds.) Schrad., *C. multiformis* G. Merr., *C. scabriuscula* (Delise) Nyl., *C. stereoclada* Abbayes, and *C. subrangiformis* Sandst. The taxa within the *Cladonia furcata* complex were formerly placed in sect. *Ascyphiferae* Tornab. (type: *C. furcata*) of *Cladonia* (Ahti 2000). This section consisted of species characterized by an evanescent primary thallus, generally subulate podetia (with the exception of *C. multiformis*) with a dichotomous branching type, closed axils when young (later open and then often with lateral splits), with a corticate surface, a very strong central stereome and usually without soredia. Among these species, atranorin and fumarprotocetraric acid are the most frequent secondary metabolites (Huovinen *et al.* 1990; Ahti 2000). Using DNA sequences, Stenroos *et al.* (2002) showed that the section *Ascyphiferae* is polyphyletic, but *C. farinacea*, *C. furcata* and *C. scabriuscula* formed a monophyletic group. However, *C. farinacea* and *C. scabriuscula* were not monophyletic, hence the specimens from Chile were different from the Northern Hemisphere material (Stenroos *et al.* 2002).

Lichenologists have shown great interest in this complex of species, as well as in the morphological variability of the taxa, indicated by the considerable amount of literature on the subject (Asahina 1942; Evans 1954; Ullrich 1956; Schade 1964, 1966; Hennipman 1967; Pišút & Wagner 1973; Paus 1997; Günzl 2004). The species are very similar and their circumscription has occasionally been questioned, which led several authors to consider some of these taxa as having infraspecific rank within *C. furcata* (Hariot 1887; Vainio 1887; Fink 1904; Abbayes 1937; Schade 1966; Hennipman 1967; Hawksworth 1969; Verseggy 1975; Hennipman & Sipman 1978; Clauzade & Roux 1985; Wirth 1995). For example, many authors have recognized *C. subrangiformis* as having infraspecific rank

within *C. furcata* (Abbayes 1937; Schade 1966; Hennipman 1967; Hawksworth 1969; Verseggy 1975; Clauzade & Roux 1985; Wirth 1995; James 2009), while others consider both as species (Nimis 1993; Burgaz & Ahti 2009; Ahti & Stenroos 2013). The phenotypic characters that have been used in combination to distinguish the species of this complex include the secondary metabolites, the branching type, the branching angle, the presence of white medullary outgrowth, the presence, abundance and morphology of squamules, the presence of soredia, soredioid granules or phyllidia, the production of scyphi, and the podetium type (solid or hollow) (Sandstede 1922; Abbayes 1937; Huovinen *et al.* 1990; Wirth 1995; Ahti 2000; James 2009). However, intensively sampled molecular data have not been compiled to test these features in the circumscription of species in this complex.

In this study, the phylogeny of the *Cladonia furcata* complex is inferred using three molecular markers, and the phenotypic characters were mapped on the Bayesian tree, in order to address the following issues: 1) the monophyly of the currently accepted species, and 2) the degree of homoplasy of the phenotypic characters. We hypothesize that the phenotypic characters are highly homoplasious and most of the species polyphyletic.

## Material and Methods

### Taxon sampling

This study is based on 862 specimens (19 of *C. farinacea*, 583 of *C. furcata*, 18 of *C. multiformis*, 43 of *C. scabriuscula*, 19 of *C. stereoclada*, and 180 of *C. subrangiformis*) from the herbaria CANB, FH, H, MA, MACB, L, S and UPS. For molecular study, 114 specimens were selected. The criteria for the selection were: 1) the entire morphological and chemical variability of each species was included; 2) the material originated from different geographical regions in order to represent as complete a distribution of the species as possible; 3) the specimen had to be less than 10 years old to be suitable for DNA studies. Unfortunately, even the fresh specimens were not all successfully amplified for the three loci, but most of the phenotypic variation represented in the species was successfully amplified. In the phylogenetic analyses, only the specimens with sequences of at least two loci were included. These specimens are listed in Table 1. *Cladonia pulvinella* S. Hammer and *C. corsicana* (Rondon & Vězda) Pino-Bodas *et al.* were used as outgroup taxa, based on

TABLE 1. Specimen information and GenBank accession numbers for the species of the *Cladonia furcata* complex used in this study.

| Taxon               | Locality and collection   | Code    | ITS rDNA | IGS rDNA | <i>RPB2</i> |
|---------------------|---|---------|----------|----------|-------------|
| <i>C. farinacea</i> | Canada, Nova Scotia, <i>D. H. S. Richardson</i> 200 (H)                                     | 1FARIN  | KR818309 | —        | KR818487    |
| <i>C. farinacea</i> | USA, Pennsylvania, <i>J. C. Lendemer</i> 12534 (H)  | 2FARIN  | KR818321 | KR818404 | KR818496    |
| <i>C. farinacea</i> | Chile, Region XII, <i>A. R. Burgaz</i> s.n. (MACB 92142)                                    | 3FARIN  | KR818325 | KR818409 | —           |
| <i>C. farinacea</i> | Chile, Region XII, <i>A. R. Burgaz</i> s.n. (MACB 92078)                                    | 4FARIN  | KR818327 | KR818411 | KR818502    |
| <i>C. farinacea</i> | Canada, Nova Scotia, <i>T. Ahti</i> 57238 (H)   | LK19    | AF455216 | KR818472 | KR818549    |
| <i>C. farinacea</i> | Chile, Region XII, <i>A. R. Burgaz</i> s.n. (MACB 91976)                                    | 4SCABRI | KR818329 | KR818413 | KR818504    |
| <i>C. farinacea</i> | USA, Hawaii, <i>Schumm &amp; Frahm</i> 16957 (H)  | CL179   | KR818339 | KR818423 | KR818513    |
| <i>C. farinacea</i> | Russia, Kamchatka, <i>A. P. Korablev</i> ex LECB 12-2010-143 (H)                            | CL362   | KR818349 | KR818434 | —           |
| <i>C. farinacea</i> | Russia, Dagestan, <i>G. Urbanavichus</i> 911168 (H)   | CL363   | KR818350 | KR818435 | —           |
| <i>C. farinacea</i> | Russia, Kamchatka, <i>D.E. Himmelbrant &amp; I.S. Stepanchikova</i> ex LECB 12-2010-140 (H) | CL364   | KR818351 | KR818436 | —           |
| <i>C. farinacea</i> | USA, Hawaii, <i>Schumm &amp; Frahm</i> 16957 (H)  | CL395   | KR818375 | KR818463 | KR818541    |
| <i>C. furcata</i>   | Spain, León, <i>A. R. Burgaz</i> s.n. (MACB 91055)  | 1FURC   | KR818310 | KR818394 | KR818488    |
| <i>C. furcata</i>   | Spain, Segovia <i>A. R. Burgaz</i> s.n. (MACB 93519)  | 2FURC   | KR818322 | KR818405 | KR818497    |
| <i>C. furcata</i>   | Spain, Lugo <i>A. R. Burgaz</i> s.n. (MACB 92559)   | 4FURC   | KR818328 | KR818412 | KR818503    |
| <i>C. furcata</i>   | Portugal, Alto Alentejo, <i>A. R. Burgaz</i> s.n. (MACB 91087)                              | 5FURC   | KR818331 | KR818416 | KR818507    |
| <i>C. furcata</i>   | Spain, Mallorca, <i>A. R. Burgaz</i> s.n. (MACB 92764)                                      | 6FURC   | KR818333 | KR818418 | —           |
| <i>C. furcata</i>   | USA, Virginia, <i>J. C. Lendemer</i> 9881 (FH 239444)                                       | 16FURC  | KR818305 | KR818391 | KR818483    |
| <i>C. furcata</i>   | Denmark, Syddanmark, <i>E. S. Hansen</i> , Lich. Danici Exs. 382 (H)                        | 22FURC  | KR818314 | KR818397 | KR818489    |
| <i>C. furcata</i>   | Denmark, Capital Region, <i>E. S. Hansen</i> , Lich. Danici Exs. 251 (H)                    | 23FURC  | KR818315 | KR818398 | KR818490    |
| <i>C. furcata</i>   | Portugal, Madeira, <i>H. Väre</i> L1801 (H)   | 26FURC  | KR818317 | KR818400 | KR818492    |
| <i>C. furcata</i>   | Finland, Etelä-Häme, <i>V. Haikonen</i> s.n. (H)  | 27FURC  | KR818318 | KR818401 | KR818493    |
| <i>C. furcata</i>   | Finland, Etelä-Savo, <i>T. Rintanen</i> s.n. (H)  | 28FURC  | KR818319 | KR818402 | KR818494    |
| <i>C. furcata</i>   | Finland, Åland, <i>M. Sjöberg</i> s.n. (H)  | 29FURC  | KR818320 | KR818403 | KR818495    |
| <i>C. furcata</i>   | Italy, Sardinia, <i>H. Väre</i> L26119 (H)  | 30FURC  | KR818324 | KR818408 | KR818499    |
| <i>C. furcata</i>   | USA, Georgia, <i>T. Ahti</i> 58283 (H)  | AT638   | AF455220 | KP732369 | KP732369    |
| <i>C. furcata</i>   | El Salvador, Santa Ana, <i>P. Clerc, C. Rojas &amp; E. Morales</i> PC 2013/007 (H)          | CL356   | KR818344 | KR818430 | KR818518    |
| <i>C. furcata</i>   | New Zealand, South Island, <i>S. Stenroos</i> 5908 (H)                                      | CL342   | KR818342 | KR818428 | KR818516    |
| <i>C. furcata</i>   | Costa Rica, San José, <i>P. Clerc &amp; C. Rojas</i> PC 2013/125 (H)                        | CL357   | KR818345 | KR818431 | KR818519    |
| <i>C. furcata</i>   | Canada, New Brunswick, <i>J. C. Lendemer</i> 27921 (H)                                      | CL358   | KR818346 | KR818432 | KR818520    |
| <i>C. furcata</i>   | Denmark, Bornholm, <i>E.S. Hansen</i> , Lich. Danici Exs. 740 (H)                           | CL365   | —        | KR818437 | KR818522    |
| <i>C. furcata</i>   | Denmark, Bornholm, <i>E.S. Hansen</i> , Lich. Danici Exs. 748 (H)                           | CL366   | KR818352 | KR818438 | KR818523    |
| <i>C. furcata</i>   | USA, New York, <i>S. Stenroos</i> 5758 (H)  | CL367   | KR818353 | KR818439 | —           |
| <i>C. furcata</i>   | Russia, Dagestan, <i>G. Urbanavichus</i> 907167 (H)   | CL368   | KR818354 | KR818440 | KR818524    |
| <i>C. furcata</i>   | Russia, Dagestan, <i>G. Urbanavichus</i> 907156 (H)   | CL370   | KR818356 | KR818442 | KR818526    |
| <i>C. furcata</i>   | UK, Scotland, <i>V. Haikonen</i> 29237 (H)  | CL371   | KR818357 | KR818443 | KR818527    |
| <i>C. furcata</i>   | USA, Alabama, <i>E. Tripp</i> 1326 (H)  | CL373   | KR818359 | KR818445 | KR818529    |
| <i>C. furcata</i>   | Japan, Honshu, <i>Y. Ohmura</i> 6909 (H)  | CL374   | KR818360 | KR818446 | —           |
| <i>C. furcata</i>   | Spain, Canary Islands, <i>H. Väre</i> 20044 (H)   | CL375   | KR818361 | KR818447 | KR818530    |
| <i>C. furcata</i>   | USA, Alabama, <i>E. Tripp</i> 1325 (H)  | CL376   | KR818362 | KR818448 | KR818531    |
| <i>C. furcata</i>   | USA, Tennessee, <i>J. C. Lendemer</i> 29801 (H)   | CL377   | KR818363 | KR818449 | KR818532    |
| <i>C. furcata</i>   | USA, North Carolina, <i>J. C. Lendemer</i> 29724 (H)  | CL378   | KR818364 | KR818450 | KR818533    |

TABLE 1. *Continued*

| Taxon                  | Locality and collection   | Code    | ITS rDNA | IGS rDNA | RPB2     |
|------------------------|---|---------|----------|----------|----------|
| <i>C. furcata</i>      | USA, Vermont, <i>M. Sundue &amp; O. Peter</i> 2719 (H)                                  | CL379   | KR818365 | KR818451 | —        |
| <i>C. furcata</i>      | Finland, Etelä-Häme, <i>V. Haikonen</i> 27704 (H)                                       | CL383   | —        | KR818454 | KR818535 |
| <i>C. furcata</i>      | Finland, Etelä-Häme, <i>V. Haikonen</i> 29424 (H)                                       | CL384   | KR818368 | KR818455 | KR818536 |
| <i>C. furcata</i>      | Finland, Etelä-Häme, <i>V. Haikonen</i> 29446 (H)                                       | CL385   | KR818369 | KR818456 | KR818537 |
| <i>C. furcata</i>      | Finland, Uusimaa, <i>R. Pino-Bodas</i> s.n. (H)   | CL386   | KR818370 | KR818457 | KR818538 |
| <i>C. furcata</i>      | USA, Oregon, <i>B. McCune</i> 3045 (H)  | CL393   | —        | KR818461 | KR818539 |
| <i>C. furcata</i>      | Germany, Saxony, <i>J. Steinová</i> 599 (PRC 851)                                       | CL396   | KR818376 | KR818464 | KR818542 |
| <i>C. furcata</i>      | Austria, Styria, <i>J. Steinová</i> 179, <i>M. Cardinalle &amp; M. Grube</i> (PRC 8513) | CL397   | KR818377 | KR818465 | KR818543 |
| <i>C. furcata</i>      | Czech Republic, Central Bohemia, <i>Z. Palice</i> 13549 (PRC)                           | CL398   | KR818378 | KR818466 | KR818544 |
| <i>C. furcata</i>      | Greece, Thasos, <i>H. Sipman &amp; T. Raus</i> 58677 (H)                                | CL406   | KR818379 | KR818467 | —        |
| <i>C. furcata</i>      | Sweden, Uppland, <i>M. Wedin</i> 8377 (S)   | MWE47   | KR818387 | KR818481 | KR818558 |
| <i>C. furcata</i>      | Sweden, Uppland, <i>M. Wedin</i> 8378 (S)   | MWE48   | KR818388 | KR818482 | KR818559 |
| <i>C. furcata</i>      | Sweden, Västergötland, <i>M. Wedin</i> 8382 (S)   | MWE179  | KR818382 | KR818476 | KR818553 |
| <i>C. furcata</i>      | Sweden, Västergötland, <i>M. Wedin</i> 8395 (S)   | MWE180  | KR818383 | KR818477 | KR818554 |
| <i>C. furcata</i>      | Sweden, Uppland, <i>M. Wedin</i> 8403 (S)   | MWE181  | KR818384 | KR818478 | KR818555 |
| <i>C. furcata</i>      | Croatia, Dubrovnik-Neretva, <i>A. R. Burgaz</i> s.n. (MACB 101098)                      | 18SUBR  | KR818307 | KR818392 | KR818485 |
| <i>C. multiformis</i>  | USA, Nova Scotia, <i>T. Ahti</i> 57065 (H)  | LK70    | AF455213 | KR818474 | KP732370 |
| <i>C. multiformis</i>  | Canada, Yukon, <i>J. C. Lendemer</i> 29155 (H)  | CL372   | KR818358 | KR818444 | KR818528 |
| <i>C. multiformis</i>  | USA, Alaska, <i>T. Ahti</i> 69715 (H)   | CL387   | KR818371 | KR818458 | —        |
| <i>C. multiformis</i>  | Canada, Manitoba, <i>T. Ahti</i> 62709 (H)  | CL389   | KR818372 | KR818459 | —        |
| <i>C. multiformis</i>  | Canada, Manitoba, <i>T. Ahti</i> 62784, <i>Piercey-Normore &amp; Booth</i> (H)          | CL390   | KR818373 | KR818460 | —        |
| <i>C. multiformis</i>  | Mexico, <i>J. Steinová</i> 442 (H)  | CL416   | —        | KR818468 | KR818545 |
| <i>C. scabriuscula</i> | USA, Alaska, <i>S. Walker</i> s.n. (H)  | 1SCABRI | KR818311 | KR818395 | —        |
| <i>C. scabriuscula</i> | Canada, Newfoundland, <i>T. Ahti</i> 56969 (H)  | LK11    | AF455217 | KR818471 | KP732371 |
| <i>C. scabriuscula</i> | China, Hunan, <i>T. Koponen et al.</i> 54509 (H)  | LK58    | AF455218 | KR818473 | KR818550 |
| <i>C. scabriuscula</i> | Chile, Magallanes, <i>T. Feuerer</i> 60212 (TUR)  | LK88    | AF455219 | KR818475 | KR818552 |
| <i>C. scabriuscula</i> | New Zealand, Otago, <i>S. Stenroos</i> 5918 (H)   | CL1     | KR818337 | KR818422 | KR818512 |
| <i>C. scabriuscula</i> | New Zealand, Otago, <i>S. Stenroos</i> 5920 (H)   | CL7     | KR818380 | KR818469 | KR818546 |
| <i>C. scabriuscula</i> | New Zealand, West Coast, <i>S. Stenroos</i> 5946 (H)                                    | CL12    | KR818338 | KR818427 | —        |
| <i>C. scabriuscula</i> | New Zealand, Southland, <i>S. Stenroos</i> 5779 (H)                                     | CL36    | KR818347 | KR818426 | —        |
| <i>C. scabriuscula</i> | UK, Scotland, <i>S. Stenroos</i> 6076 (H)   | CL98    | KR818381 | KR818470 | KR818547 |
| <i>C. scabriuscula</i> | New Zealand, Southland, <i>S. Stenroos</i> 5895 (H)                                     | CL341   | KR818341 | KR818425 | KR818515 |
| <i>C. scabriuscula</i> | New Zealand, Southland, <i>S. Stenroos</i> 5773 (H)                                     | CL343   | KR818343 | KR818429 | KR818517 |
| <i>C. scabriuscula</i> | USA, Alaska, <i>S. Talbot &amp; J. Myers</i> UNI059-55 (H)                              | CL381   | KR818366 | KR818452 | KR818534 |
| <i>C. scabriuscula</i> | USA, Alaska, <i>S. Talbot &amp; J. Myers</i> UNI066-13 (H)                              | CL382   | KR818367 | KR818453 | —        |
| <i>C. scabriuscula</i> | USA, Alaska, <i>S. Talbot &amp; Sa. Talbot</i> ADA706 (H)                               | CL394   | KR818374 | KR818462 | KR818540 |
| <i>C. stereoclada</i>  | Azores, São Miguel, <i>F. Berger</i> 18357 (H)  | 1STEREO | KR818312 | KR818396 | —        |
| <i>C. stereoclada</i>  | Azores, Terceira, <i>A. F. Rodriguez</i> s.n. (H)                                       | 2STEREO | KR818313 | KR818406 | —        |
| <i>C. stereoclada</i>  | Spain, Canary Islands, <i>A. R. Burgaz</i> s.n. (MACB 97913)                            | 3STEREO | KR019556 | KR019558 | KR818500 |
| <i>C. stereoclada</i>  | Spain, Canary Islands, <i>A. R. Burgaz</i> s.n. (MACB 97911)                            | 4STEREO | KR818330 | KR818414 | KR818505 |
| <i>C. stereoclada</i>  | Spain, Canary Islands, <i>P. Alanko</i> 128470a (H)                                     | CL138   | KR019557 | KR019559 | —        |

TABLE 1. Continued

| Taxon                    | Locality and collection   | Code   | ITS rDNA | IGS rDNA | RPB2     |
|--------------------------|---|--------|----------|----------|----------|
| <i>C. subrangiformis</i> | Spain, Soria, A. R. Burgaz s.n. (MACB 911155)                   | 2SUBR  | KR818323 | KR818407 | KR818498 |
| <i>C. subrangiformis</i> | Spain, Soria, A. R. Burgaz s.n. (MACB 102468)                   | 3SUBR  | KR818326 | KR818410 | KR818501 |
| <i>C. subrangiformis</i> | Spain, Guadalajara, A. R. Burgaz s.n. (MACB 102802)             | 4SUBR  | —        | KR818415 | KR818506 |
| <i>C. subrangiformis</i> | Spain, Asturias, A. R. Burgaz s.n. (MACB 102466)                | 5SUBR  | KR818332 | KR818417 | KR818508 |
| <i>C. subrangiformis</i> | Portugal, Beira Alta, A. R. Burgaz s.n. (MACB 102469)           | 7SUBR  | KR818334 | KR818419 | KR818509 |
| <i>C. subrangiformis</i> | Spain, Madrid, A. R. Burgaz s.n. (MACB 102467)                  | 8SUBR  | KR818335 | KR818420 | KR818510 |
| <i>C. subrangiformis</i> | Spain, Mallorca, A. R. Burgaz s.n. (MACB 96253)                 | 9SUBR  | KR818336 | KR818421 | KR818511 |
| <i>C. subrangiformis</i> | China, Xinjiang, A. Abbas 200265 (FH 302266)                    | 11SUBR | KR818303 | KR818389 | —        |
| <i>C. subrangiformis</i> | The Netherlands, Limburg, A. Aptroot 57907 (H)                  | 14SUBR | KR818304 | KR818390 | —        |
| <i>C. subrangiformis</i> | Turkey, Zonguldak, K. Yazici 12 (H)                             | 17SUBR | KR818306 | —        | KR818484 |
| <i>C. subrangiformis</i> | Bosnia & Herzegovina, Sarajevo, A. R. Burgaz s.n. (MACB 101105) | 19SUBR | KR818308 | KR818393 | KR818486 |
| <i>C. subrangiformis</i> | Sweden, Uppland, M. Wedin 8376 (S)                              | MWE46  | KR818386 | KR818480 | KR818557 |
| <i>C. subrangiformis</i> | Sweden, Öland, M. Wedin 9491 (S)                                | MWE182 | KR818385 | KR818479 | KR818556 |
| <i>C. subrangiformis</i> | Spain, Mallorca, Schumm, Frahm & Lieth 16302 (H)                | CL197  | KR818340 | KR818424 | KR818514 |
| <i>C. subrangiformis</i> | Russia, Dagestan, G. Urbanavichus 920180 (H)                    | CL360  | KR818348 | KR818433 | KR818521 |
| <i>C. subrangiformis</i> | Russia, Dagestan, G. Urbanavichus 907162 (H)                    | CL369  | KR818355 | KR818441 | KR818525 |
| <i>C. subrangiformis</i> | Turkey, Zonguldak, K. Kimatoglu s.n. (H)                        | 24FURC | KR818316 | KR818399 | KR818491 |

their placement in our more extensive phylogenetic analyses (Pino-Bodas *et al.* 2012a; Ahti *et al.* 2015; S. Stenroos, R. Pino-Bodas, H. T. Lumbsch, S. Parmmen, A. Thell, P. Clerc, A. R. Burgaz, M. P. Martín, F. Högnabba, T. Ahti, unpublished data).

**Phenotypic characters**

Fourteen phenotypic characters were selected based on the literature (Merrill 1909; Sandstede 1922; Abbayes 1937, 1946; Evans 1950; Ahti 2000). Table 2 lists the characters and their different states. The state of each phenotypic character was obtained by the morphological and chemical study of each specimen included in the phylogenetic study. The frequency of each character state per species, based on an extensive number of specimens, is provided in the supplementary material (Tables S1 & S2, supplementary material available online). The morphological characters were studied in three randomly selected podetia per specimen. The angles of all branches in the three podetia were measured, then the average of all these values per specimen was used for the analysis. Only a few specimens showed different states for some of the characters (frequently for the characters axil type or squamules). In these cases, the presence of squamules was taken as a character state for the specimen, since we considered that the podetia had the ability to develop squamules even though they did not show them. The axil type was coded as a third state (Table 2). The macroscopic characters were observed under an Olympus SZX9 stereomicroscope, while the anatomical character of stereome type was studied using an Olympus CX41 microscope at ×400. Secondary metabolites were studied by TLC according to standardized procedures (White & James 1985), with solvent systems A and B.

A cluster analysis was run in order to assess how the specimens gathered on the basis of the 14 phenotypic characters. Then, the morphological groups were compared with the clades obtained in the phylogenetic analyses. The analysis was implemented in R version 3.1.2 (R Core Team 2013), using the cluster package (Maechler *et al.* 2014).

**DNA extraction and sequencing**

Prior to DNA isolation, secondary metabolites were extracted by soaking the samples in acetone for 2 h; then the liquid was used for TLC. The DNeasy Plant Mini Kit (Qiagen) or DNeasy Blood and Tissue Kit (Qiagen) was used to extract DNA, according to the manufacturer's instructions. No differences between the kits were found with respect to the amount or quality of the genomic DNA obtained. The DNA was dissolved in 200 µl of buffer included in the kit. The following three nuclear loci were amplified: 1) ITS rDNA using the primers ITS1F (Gardes & Bruns 1993) and ITS4 (White *et al.* 1990); 2) RPB2 was amplified using nested PCR with two pairs of primers, RPB2-5F/RPB2-7R (Liu *et al.* 1999) in the first PCR



TABLE 2. List of phenotypic characters studied and their states in the *Cladonia furcata* complex.

| Character                        | States of character            |
|----------------------------------|--------------------------------|
| Atranorin                        | 0 = absence, 1 = presence      |
| Psoromic acid                    | 0 = absence, 1 = presence      |
| Bourgeanic acid                  | 0 = absence, 1 = presence      |
| Fumarprotocetraric acid          | 0 = absence, 1 = presence      |
| Stereome type                    | 0 = smooth, 1 = striate        |
| Surface of the podetia           | 0 = smooth, 1 = wrinkled       |
| White medullary outgrowths       | 0 = absence, 1 = presence      |
| Squamules                        | 0 = absence, 1 = presence      |
| Axils                            | 0 = open, 1 = closed, 2 = both |
| Soredia                          | 0 = absence, 1 = presence      |
| Podetium type                    | 0 = hollow, 1 = solid          |
| Scyphi                           | 0 = absence, 1 = presence      |
| Branching type (thorny branches) | 0 = absence, 1 = presence      |
| Branching angle                  | 0 = < 70°, 1 = > 70°           |

and RPB2dRaq/RPB2rRaq (Pino-Bodas *et al.* 2010) in the second PCR; and 3) IGS rDNA using IGSf/IGSr (Wirtz *et al.* 2008). PCRs were carried out with Ready-to-Go-PCR Beads (GE Healthcare Life Sciences, UK). The volume of reaction was 25 µl for each tube, with a 0.4 mM final concentration of primers and 5–30 ng of extracted DNA. The same amount of DNA was used to amplify the three loci. The amplification programs were: 1) 94°C for 5 min; 5 cycles of 94°C for 30 s, 54°C for 30 s, and 72°C for 1 min; and 33 cycles of 94°C for 30 s, 48°C for 30 s, and 72°C for 1 min; with a final extension of 72°C for 10 min for ITS rDNA; 2) initial denaturation at 94°C for 5 min; 40 cycles of 95°C for 1 min, 52°C for 30 s, and 72°C for 2 min; with a final extension at 72°C for 10 min for *RPB2* and IGS rDNA. PCR products were purified using the QIAquick gel extraction Kit (QIAGEN, Hilden, Germany) or ExoSAP-IT (USB Corporation, Ohio, USA). The sequencing reactions were performed at Macrogen (South Korea) service ([www.macrogen.com](http://www.macrogen.com)), with the same primers used for the PCR.

### Sequence alignment and phylogenetic analyses

The sequences were aligned manually with SE-AL v2.0a11 (Rambaut 2002) for each locus separately. The alignments did not have ambiguous regions and all the positions were included in the analyses. Each region was analyzed by maximum likelihood (ML). The ML analyses were implemented using RAxML (Stamatakis 2006) assuming the GTRGAMMA model. The bootstrap searches were conducted with 500 pseudoreplicates using the rapid bootstrap algorithm. Congruence among the different topologies inferred from the loci was tested following Lutzoni *et al.* (2004). We considered nodes to be in conflict if different topologies were each supported with at least 70% bootstrap. The topologies of the single locus ML trees were all poorly resolved. In the IGS rDNA

tree, two main unsupported clades and a few small well-supported subclades were found. The topology of ITS rDNA yielded one large clade and other unsupported small clades. Inside the main clade, several supported subclades resulted. The topology of *RPB2* yielded three main clades, one of them with the same specimens that the main clade found in the ITS rDNA analysis. Few small well-supported subclades were found in the IGS rDNA analysis. No incongruity was detected. MrModeltest 2.3 (Nylander 2004) was used for selecting the most appropriate nucleotide substitution model for each locus using the AIC criterion. Two combined datasets were constructed, one containing the specimens for which at least two loci were amplified and the other containing the specimens for which all three loci were amplified. The combined datasets were treated as five partitions: ITS rDNA, IGS rDNA and each of the three codon positions of *RPB2*, respectively, and analyzed by ML (on the same conditions for each locus separately) and a Bayesian approach. The Bayesian analysis was carried out using MrBayes 3.2 (Ronquist *et al.* 2012). The model SYM+I+G was applied to each partition of *RPB2*, while the SYM+G model was used for ITS rDNA and GTR+G was applied to IGS rDNA. The posterior probabilities were approximated by sampling trees using Markov Chain Monte Carlo (MCMC). The posterior probabilities of each branch were calculated by counting the frequency of trees visited during MCMC analysis. Two simultaneous runs with 20 000 000 generations each, starting with a random tree and employing 4 simultaneous chains, were executed. Every 1000th tree was saved into a file. The convergence was assessed with the average standard deviation of split frequencies (< 0.01) and in Tracer v. 1.5 (Rambaut & Drummond 2009) plotting the likelihood versus generation number. In addition, the split probabilities were checked in AWTY (Nylander *et al.* 2008). The first 1 000 000 generations (i.e. the first 1000 trees) were deleted as the 'burn-in' of the chain. A 50% majority-rule consensus tree was calculated using the 'sumt' command of MrBayes.

### Mapping and homoplasy of phenotypic characters

The 14 phenotypic characters described previously (Table 2) were mapped on the 50% majority-rule consensus tree from the Bayesian analysis, based on the dataset containing the specimens for which all three loci were amplified.

The homoplasy for the 14 characters was estimated by the consistency index (CI) and retention index (RI), using Mesquite 2.75 (Maddison & Maddison 2011). Both parameters were calculated for each character on the 50% majority-rule consensus tree from the Bayesian analysis of the three loci dataset.

## Results

### Phylogenetic analyses

In this study, 261 new sequences were generated: 89 of ITS rDNA, 97 of IGS rDNA and 75 of *RPB2* (Table 1). The concatenated dataset with sequences of all three loci contained 73 taxa and 1876 characters, 1586 of which were constant and 145 were parsimony-informative. The average number of different nucleotides among the sequences of the ingroup was 8.5 in ITS rDNA, 6.7 in IGS and 6.7 in *RPB2*. The number of different nucleotides including the outgroup was 9.5 in ITS rDNA, 7.2 in IGS rDNA and 7.0 in *RPB2*. The ML analysis yielded a tree with  $-\ln L = 5947.213$ , while the Bayesian analysis resulted in an arithmetic mean of  $-\ln L = 6164.412$ . The trees from ML and Bayesian analyses had the same topology, so only the Bayesian tree is shown (Fig. 1). The *C. furcata* complex resolved into three major clades. All the species except *C. stereoclada* turned out to be polyphyletic. Clade A was well supported and contained specimens of *C. furcata*, *C. farinacea*, *C. scabriuscula*, *C. subrangiformis* and *C. stereoclada*. Several well-supported subclades (six) were recovered (Fig. 1). One subclade included four specimens of *C. scabriuscula*; another subclade included all the specimens of *C. stereoclada*; another had two specimens of *C. farinacea*; another included two specimens of *C. furcata*; and the remaining two subclades comprised specimens of *C. furcata* and *C. subrangiformis*. Clade B included three specimens, one of *C. furcata* and two of *C. subrangiformis*.

Clade C was supported only in the Bayesian analysis (57% bootstrap in the ML analysis). This clade included specimens of *C. furcata*, *C. scabriuscula*, *C. farinacea*, *C. multiformis* and *C. subrangiformis* (Fig. 1). Five well-supported subclades were recovered: one with two specimens of *C. farinacea* and one specimen of *C. scabriuscula* from Chile; another with two specimens of *C. farinacea* from North America; two subclades contained two specimens of *C. furcata* each; and another subclade had one specimen of *C. subrangiformis* and two specimens of *C. furcata*.

The analyses based on the concatenated dataset including specimens with sequences for 2 or 3 loci generated a ML tree with  $-\ln L = 6972.790$ , and  $-\ln L = 6817.049$  in the Bayesian analysis. Both trees had the same topology. This topology was an unresolved phylogeny (see Supplementary Material, Figure S1 available on-line) for the *C. furcata* complex. As a result, the three loci were used to map the phenotypic characters.

### Phenotypic groups and homoplasy

Figure 2 shows the dendrogram yielded in the cluster analysis based on the phenotypic characters studied. It shows three main groups, one with the two specimens of *C. stereoclada*; a second with most of the specimens of *C. subrangiformis* and three specimens of *C. furcata*; and a third one including the specimens of *C. farinacea*, *C. multiformis*, *C. scabriuscula* and most specimens of *C. furcata*. Inside the latter group, the specimens tended to gather in species. However, there was a low correlation between the phenotypic affinities and the phylogenetic results.

No phenotypic characters supported any of the main clades (A–C) obtained in the molecular phylogeny (Fig. 3). Solid podetia were characteristic for the subclade constituted by *C. stereoclada*. The other phenotypic characters did not show a clear phylogenetic structure. For example, the presence of psoromic acid, which is a descriptive trait for *C. subrangiformis*, occurred in five subclades; the presence of scyphi, which is diagnostic for *C. multiformis*, occurred in two positions in clade C.

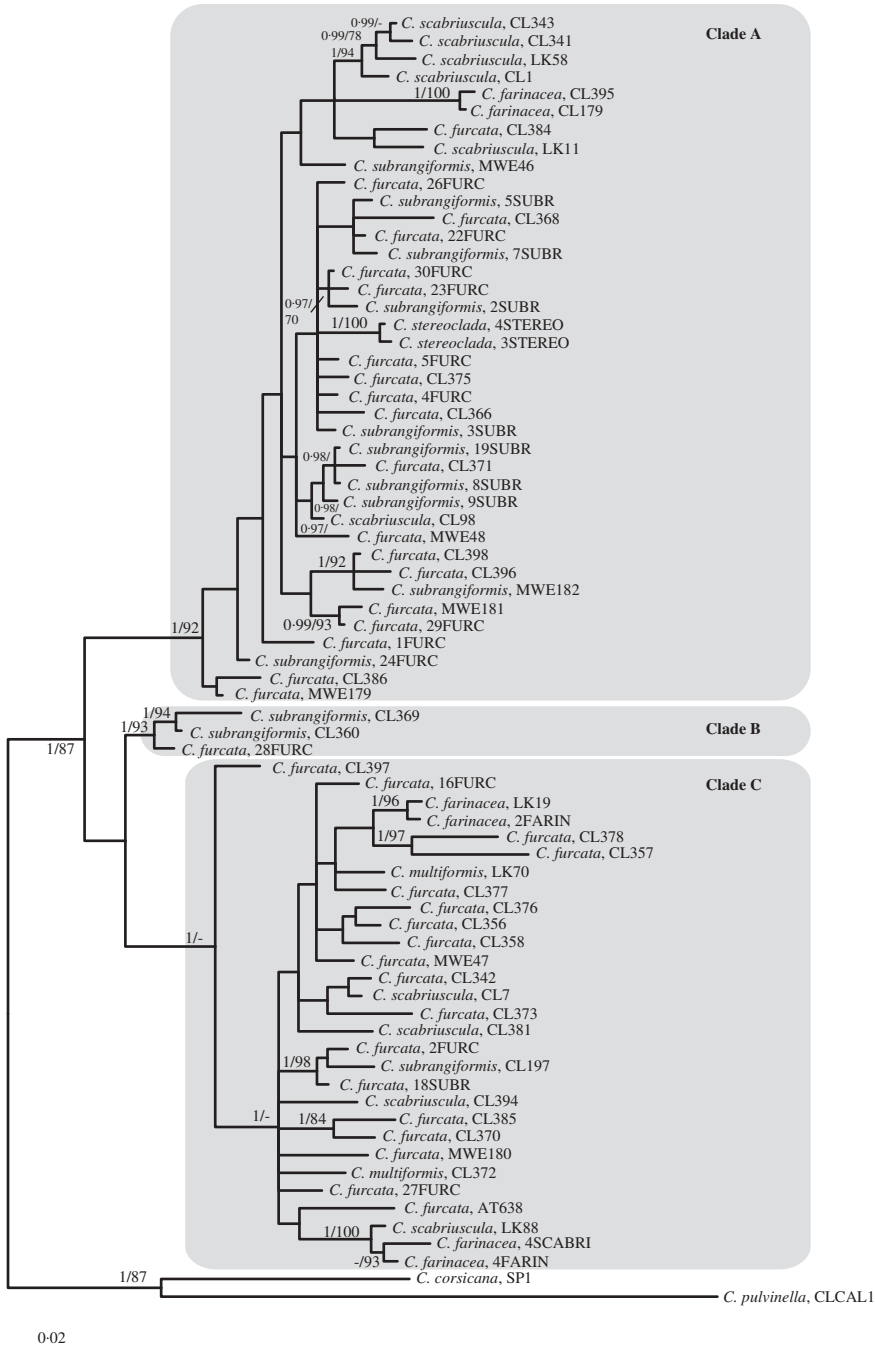


FIG. 1. Molecular phylogeny of the *Cladonia furcata* complex. This is a 50% majority-rule consensus tree from a Bayesian analysis based on the concatenated dataset of ITS rDNA, IGS rDNA and *RPB2*. Posterior probability (first figure)  $\geq 0.95$  and bootstrap (second figure)  $\geq 70\%$  are indicated at the branches.



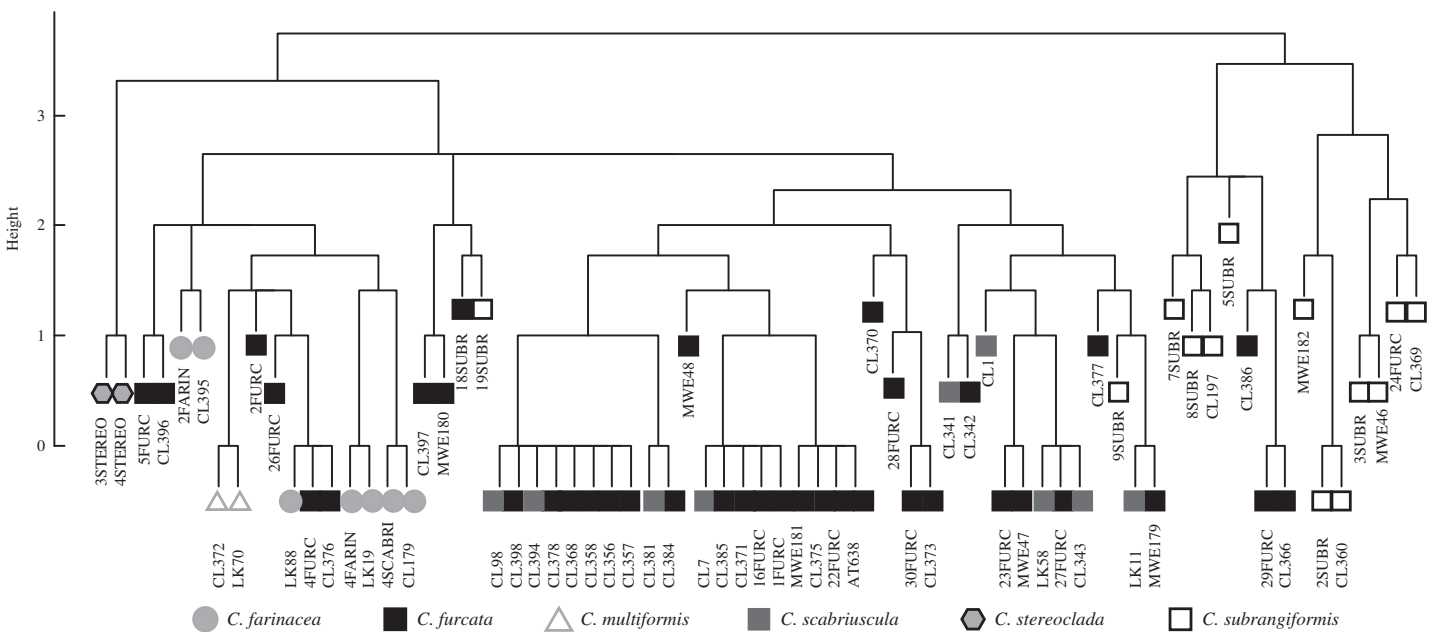


FIG. 2. Dendrogram of a cluster analysis calculated from 14 phenotypic characters of the *Cladonia furcata* complex (see Table 2). The different symbols represent species, labels correspond with the code used in the molecular phylogeny (Fig. 1, Table 1).

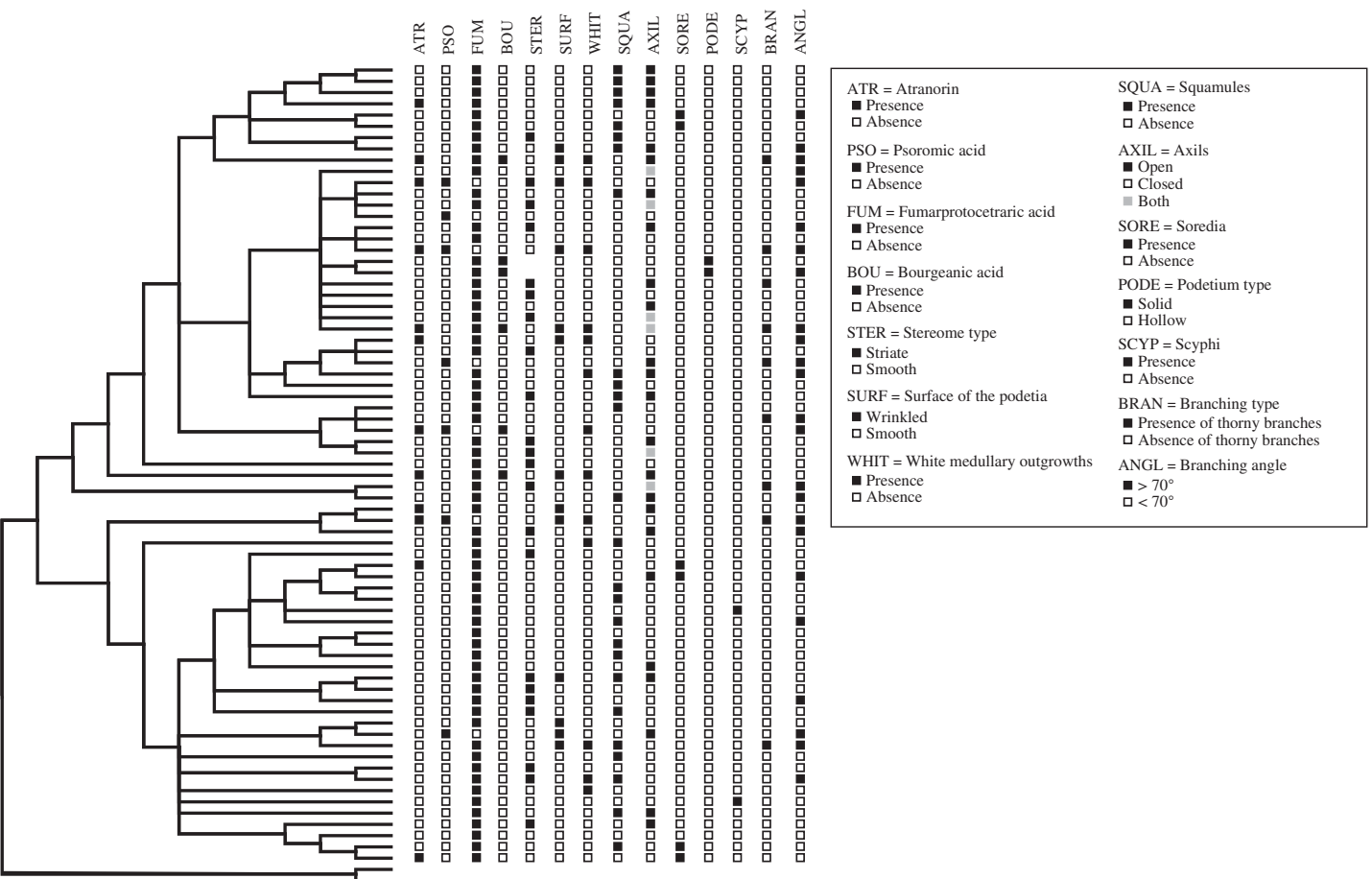


Fig. 3. Phenotypic character states of the *Cladonia furcata* complex mapped on the Bayesian tree based on the concatenated dataset including only the specimens with sequences for all three loci.

TABLE 3. Homoplasy values for each character in the *Cladonia furcata* complex.

| Character                  | CI    | RI    |
|----------------------------|-------|-------|
| Atranorin                  | 0.083 | 0.083 |
| Psoromic acid              | 0.142 | 0.000 |
| Fumarprotocetraric acid    | 0.142 | 0.000 |
| Bourgeanic acid            | 0.166 | 0.166 |
| Stereome type              | 0.058 | 0.2   |
| Surface                    | 0.1   | 0.25  |
| White medullary outgrowths | 0.076 | 0.00  |
| Squamules                  | 0.05  | 0.24  |
| Axils                      | 0.076 | 0.111 |
| Soredia                    | 0.2   | 0.333 |
| Solid podetium             | 1.0   | 1.0   |
| Scyphi                     | 0.333 | 0.00  |
| Branches                   | 0.1   | 0.0   |
| Angle type                 | 0.045 | 0.086 |

CI = consistence index, RI = retention index.

Table 3 summarizes the CI and RI values for the different traits examined. Most of the characters were highly homoplasious, with CI and RI values close to 0.0. Only the solid podetium was not homoplasious (CI = 1.0, RI = 1.0).

## Discussion

The phylogeny of the *C. furcata* complex is inconsistent with the species based on phenotypic characters. All but one of the studied phenotypic characters that were previously used for species circumscription in the *C. furcata* complex have been shown here to be highly homoplasious (Table 2). This is consistent with previous studies that also found high homoplasy levels for phenotypic characters within *Cladoniaceae* (Pino-Bodas et al. 2011; Parnmen et al. 2012). For example, the presence of scyphi (Pino-Bodas et al. 2011), or the presence of soredia (Stenroos et al. 2002) were shown to be highly homoplasious in other groups of *Cladoniaceae*. The podetium type is the only non-homoplasious character and solid podetia represent an autapomorphy for *C. stereoclada*.

The lack of congruence between the phenotypic characters studied and the molecular phylogeny may be due to the influence of the

environmental conditions on those characters (Osyczka et al. 2014). It is well known that a large number of *Cladonia* species are morphologically extremely variable (Abbayes 1937; Clauzade & Roux 1985; Ahti & Stenroos 2013). *Cladonia furcata* is especially variable in morphology, which has led several authors to distinguish numerous infraspecific taxa (Vainio 1887; Fink 1904; Thomson 1968; Ozenda & Clauzade 1970; Egan 1972). Nevertheless, most authors currently consider much of the morphological variation of *C. furcata* to be an effect of phenotypic plasticity (Ahti 1977), or to represent developmental stages of this species (Jahns & Beltman 1973; Jahns et al. 1978). In addition, many intermediate forms have been described among *C. furcata*, *C. subrangiformis*, *C. scabriuscula* and *C. farinacea* (Abbayes 1937; Brodo & Ahti 1996; Stenroos et al. 2002).

Up to now, few ecological studies have addressed the influence of environmental factors on the morphology of *Cladonia* species (Schade 1966; Vagts et al. 1994; Paus 1997; Günzl 2004; Osyczka & Rola 2013). For example, in the *C. pocillum/C. pyxidata* complex, Kotelko & Piercey-Normore (2010) showed that the morphology of the primary thallus (the main character used to separate *C. pyxidata* from *C. pocillum*) is an adaptation to differences in soil pH and that diverse phylogenetic lineages are tolerant to different soil pH values.

The presence of atranorin is one of the main characters used to distinguish *C. subrangiformis* from *C. furcata* (Sandstede 1922; Evans 1954). Atranorin is generally lacking in *C. furcata*, although in certain areas *C. furcata* specimens containing atranorin have been found (Huovinen et al. 1990; Etayo & Burgaz 1997; Ahti 2000; Huneck et al. 2004), especially in eastern North America, where Evans (1954) included them in *C. subrangiformis* (see Hale & Culbertson 1960; Ahti 1962). Furthermore, this substance is not constantly present in *C. subrangiformis* as chemotypes lacking atranorin were found (Burgaz & Ahti 1992, 2009; Ahti & Stenroos 2013). In the other *Cladonia* species of this complex, atranorin is not constant either. For instance, material of *C. farinacea* from South America

often contains atranorin, while samples from North America and Asia lack this substance (Huovinen *et al.* 1990; Stenroos *et al.* 1992). Also, *C. scabriuscula* rarely contains atranorin. The presence of psoromic acid is apparently restricted to some specimens of *C. subrangiformis*. The chemotypes with psoromic acid are particularly abundant in the Iberian Peninsula but are also known in Sweden (Burgaz & Ahti 2009; Ahti & Stenroos 2013). Psoromic acid is known to be variable and often rare in many *Cladonia* species, for example in *C. arbuscula* (Ruoss & Huovinen 1989), *C. rappii* A. Evans (Ahti 2000), *C. foliacea* (Huds.) Willd. (Burgaz & Ahti 2009, under *C. convoluta*), *C. symphycarpa* (Osyczka & Skubala 2011), *C. acuminata* (Ahti & Stenroos 2013), and *C. fruticulosa* (Stenroos 1988).

Most of the species in the *C. furcata* complex always contain fumarprotocetraric acid (Huovinen *et al.* 1990), which is absent only in some specimens of *C. subrangiformis* (Burgaz & Ahti 2009), hence being non-diagnostic.

Bourgeanic acid is present in some specimens of *C. subrangiformis* (four of them were included in the phylogenetic analyses). These specimens do not appear phylogenetically closely related to each other in our analyses, showing that this character has a weak phylogenetic signal. For other *Cladonia* species, it has been shown that the presence of fatty acids may have little taxonomic significance, as is the case for *C. subturgida* (Pino-Bodas *et al.* 2012a), while the presence of bourgeanic acid is diagnostic in distinguishing *C. humilis* from *C. conista* (Pino-Bodas *et al.* 2012b, 2013). This is the first time that bourgeanic acid has been found in *C. stereoclada*.

Ahti (2000) indicated that the internal stereome surface in *C. furcata* is striate in general. The stereome surface in *Cladonia* can be smooth, papillate, striate, reticulate or tomentose (Ahti 2000). In our study, only two types of stereomes were found: smooth and striate. The specimens which share the same stereome type are not closely related (Fig. 3B). Additional studies on the morphological variation and taxonomic value of stereome types are necessary to evaluate

their taxonomic significance. However, our data suggest that their taxonomic significance is low in the *C. furcata* complex.

The podetial surface is one of the main characters used for separating species in the genus *Cladonia* (Ahti 2000). In the *C. furcata* complex, all species have corticate podetia with the exception of *C. farinacea*, which is partially sorediate. However, some authors found differences in the cortex surface between *C. furcata* and *C. subrangiformis* (Wirth 1995). In the latter, the surface is usually wrinkled and glossy, while it is smooth and less shiny in *C. furcata*. Our analyses show that specimens with different cortex types are not phylogenetically separated.

The presence of white medullary outgrowths (often tuberculous) was a diagnostic character used by Sandstede (1922; protologue) to distinguish *C. subrangiformis* from *C. furcata*, but later he considered that the presence of atranorin is more important since white medullary outgrowths could be a response to unfavourable conditions (Sandstede 1931). Other authors have considered that these outgrowths appear in response to the accumulation of calcium oxalate in calcareous habitats (James 2009). Several studies have shown that lichens in calcareous soils often produce calcium oxalate to remove the excess of calcium (Ascaso *et al.* 1982; Wadsten & Moberg 1985; Edwards *et al.* 1991). Therefore, this character is probably influenced by the type of substratum. Other *Cladonia* species with these structures include *C. macroceras*, *C. ecmocyna*, and *C. rangiformis* (Schade 1957; Ahti 1980; Burgaz & Ahti 1992).

Squamulose podetia can be present in most of the taxa studied. In *Cladonia scabriuscula*, squamules are always present and are more abundant than in the other species, and peltate. The name “var. *pinnata* (Flörke) Vain.” is often used to denote the squamulose specimens of *C. furcata*. Numerous species of *Cladonia* are able to produce squamules, but do not always develop them. Vainio (1887) pointed out that populations living in humid areas tend to develop more squamules than those growing in drier habitats. This observation is

supported by the fact that *C. scabriuscula* is a species common in oceanic areas (Krog 1968; Brodo & Ahti 1996; Ahti & Stenroos 2013). Günzl (2004) found that specimens of *C. furcata* living in shady places had squamules more often than those growing in sunny habitats. Vagts *et al.* (1994) transplanted *C. furcata* thalli to soils with different chemical compositions, finding that eventually many thalli developed squamules. All these observations indicate that the presence and abundance of squamules, at least in the *C. furcata* complex, are dependent on environmental factors such as humidity and light.

*Cladonia furcata*, *C. farinacea*, *C. scabriuscula*, and *C. multififormis* usually have open axils, whereas in *C. subrangiformis* they are closed, although either state can be present in most taxa (Ahti & Stenroos 2013), as was observed in the specimens under study (Fig. 4C). Podetia with longitudinal fissures and perforated axils in *Cladonia* have been observed in habitats with high humidity and shade (Sembdner 1958), but Günzl's observations (2004) did not corroborate these observations for *C. furcata*. However, he observed that older podetia, often bearing apothecia, have the perforated axils showing longitudinal fissures, as did other authors (Burgaz & Ahti 2009; Ahti & Stenroos 2013). This suggests that the different states represent different developmental stages, which would explain the lack of phylogenetic signal of the character.

In other *Cladonia* groups, it has been found that specimens with sorediate podetia can be present in several lineages, as in the case of *Cladonia coccifera* (Steinová *et al.* 2013). In general, it has been shown that the presence of soredia is a poor diagnostic character in some lichen genera (Tehler *et al.* 2004, 2009; Ferencova *et al.* 2010; Lumbsch & Leavitt 2011).

The podetium type did not show homoplasy in the *C. furcata* complex, and solid podetia represent an autapomorphy of *C. stereoclada*. This is a rare character in *Cladonia*; only two species in the genus have solid podetia, namely *C. solida* Vainio and *C. stereoclada* (Ahti 2000). *Cladonia solida* has not been included in any phylogenetic study. Some other genera in

*Cladoniaceae* also have species with solid podetia (*Cetradonia* and *Gymnoderma*), but in these genera the algae are lacking from the podetia (Wei & Ahti 2002).

The ability to produce perforated scyphi is used to distinguish *C. multififormis* from *C. furcata*. However, not all the podetia of *C. multififormis* have scyphi at every ontogenetic stage, and when scyphi are lacking the species can be very difficult to distinguish from *C. furcata* (Merrill 1909; Hammer 1995). Fontaine *et al.* (2010) found that the formation of scyphi is a character affected by convergent evolution, and hypothesized that scyphi fulfil the function of retaining water near the developing apothecia. This hypothesis could explain the lack of consistency in the production of scyphi in many species of *Cladonia*; their presence would be linked to the advanced developmental stages in which apothecia grow.

Thorny branches are characteristic of *C. furcata* “var. *palamea*” and *C. subrangiformis*, which are difficult to distinguish (Burgaz & Ahti 2009). In the present study, five specimens of *C. furcata* and four of *C. subrangiformis* with thorny branches were included but they are not phylogenetically closely related. Some authors' field studies indicate that the specimens of *C. furcata* with thorny branches develop in sunny habitats (Hillmann & Grummann 1957; Vagts *et al.* 1994), which would suggest that the presence of such a branching type is due to environmental factors.

The branching angle is one of the characters used to separate *C. furcata* from *C. subrangiformis* (Wirth 1995; Burgaz & Ahti 2009; Ahti & Stenroos 2013). In *C. subrangiformis* the angles tend to be wider than in *C. furcata*, often ranging from right to obtuse, sometimes beyond 120°.

The results of our phylogenetic analysis are congruent with the results of several previous studies and are inconsistent with the traditional species circumscriptions. Günzl's phylogenetic analysis (2004) based on ITS rDNA could not separate German specimens of *C. furcata* and *C. subrangiformis*. Stenroos *et al.* (2002) showed that *C. farinacea* and *C. scabriuscula* are not monophyletic. Fontaine *et al.* (2010) reported that *C. multififormis* was



monophyletic, but in our analysis this taxon turned out to be polyphyletic (Fig. 1 and Supplementary Figure S1). We think that this disagreement is caused by the inclusion of *C. multiformis* in an analysis of the *C. gracilis* group, which is only distantly related to the *C. furcata* group (Stenroos *et al.* 2002). The sequences produced by Fontaine *et al.* (2010) were included in our analysis of ITS rDNA, and we found that these sequences do not form one monophyletic clade (data not shown). In fact, Fontaine *et al.* (2010) mention the large genetic variation of *C. multiformis*.

According to our results, a study focused on species delimitation should be carried out in order to clarify the taxonomy of the *C. furcata* complex. Additional loci, including more variable loci than the ones used here, should be studied in the future to clarify the delimitation of the species within this group. In addition, other phenotypic characters should be investigated. In the family *Parmeliaceae*, anatomical characters such as ultrastructure of the cortex and ascomata have supported clades found in phylogenetic analyses (Argüello *et al.* 2007; Divakar *et al.* 2010).

In conclusion, only one out of the six species included in our analyses, namely *C. stereoclada*, was monophyletic. This is also a species with the most restricted geographical range, limited to Macaronesia and some areas of Ireland and Scotland (James 2009).

This study was supported by the Spanish Ministry of Economy & Competitiveness (CGL2013-41839-P). MW acknowledges support from the Swedish Research Council (VR 621-2009-5372, VR 621-2012-3990). RP-B was funded by the Marie Curie IEF-program (PIEF-GA-2013-625653).

### Supplementary Material

For supplementary material accompanying this paper visit <http://10.1017/S0024282915000225>

### REFERENCES

- Abbeyes, H. des (1937) Contributions nouvelles à la connaissance des Lichens armoricains II. *Cladonia subrangiformis* Sandst. emend. H. des Abb. *Bulletin de la Societe Scientifique de Bretagne* **13**: 122–144.
- Abbeyes, H. des (1946) Les *Cladonia* (Lichens) des Îles Açores. *Portugaliae Acta Biologica* **1**: 243–254.
- Ahti, T. (1962) Notes on the lichen *Cladonia pseudorangiformis* Asah. *Archivum Societatis Zoologicae Botanicae Fennicae* “Vanamo” **17**: 38–41.
- Ahti, T. (1977) *Cladonia gorgonina* group and *C. gigantea* in East Africa. *Lichenologist* **9**: 1–15.
- Ahti, T. (1980) Taxonomic revision of *Cladonia gracilis* and its allies. *Annales Botanici Fennici* **17**: 195–243.
- Ahti, T. (2000) *Cladoniaceae*. *Flora Neotropica Monograph* **78**: 1–363.
- Ahti, T. & Stenroos, S. (2013) *Cladoniaceae*. In *Nordic Lichen Flora Vol. 5* (T. Ahti, S. Stenroos & R. Moberg, eds): 1–117. Uppsala: Museum of Evolution, Uppsala University.
- Ahti, T., Pino-Bodas, R. & Stenroos, S. (2015) *Cladonia corymbescens* consists of two species. *Mycotaxon* **130**: 91–103.
- Argüello, A., Del Prado, R., Cubas, P. & Crespo, A. (2007) *Parmelina quercina* (Parmeliaceae, Lecanorales) includes four phylogenetically supported morpho-species. *Biological Journal of the Linnean Society* **91**: 455–467.
- Asahina, Y. (1942) Chemismus der Cladonien unter besonderer Berücksichtigung der japanischen Arten (Fortsetzung). *Journal of Japanese Botany* **18**: 663–683.
- Ascaso, C., Galván, J. & Rodríguez-Pascual, C. (1982) The weathering of calcareous rocks by lichens. *Pedobiologia* **24**: 219–229.
- Brodo, I. M. & Ahti, T. (1996) Lichens and lichenicolous fungi of the Queen Charlotte Islands, British Columbia, Canada. 2. The *Cladoniaceae*. *Canadian Journal of Botany* **74**: 1147–1180.
- Burgaz, A. R. & Ahti, T. (1992) Contribution to the study of the genera *Cladonia* and *Cladonia* in Spain. I. *Nova Hedwigia* **55**: 37–53.
- Burgaz, A. R. & Ahti, T. (2009) *Cladoniaceae*. *Flora Liqueológica Ibérica*, Vol. 4. Madrid: Sociedad Española de Liqueología.
- Buschbom, J. & Mueller, G. M. (2006) Testing “species pair” hypotheses: evolutionary processes in the lichen-forming species complex *Porpidia flavocoeulescens* and *Porpidia melinodes*. *Molecular Biology and Evolution* **23**: 574–586.
- Clauzade, G. & Roux, C. (‘1985’) Likenoj de Ockidenta Europo. *Bulletin de la Société Botanique du Centre-Ouest, Nouvelle série, Numéro spécial* **7**: 1–891.
- Crespo, A. & Lumbsch, H. T. (2010) Cryptic species in lichen forming fungi. *IMA Fungus* **1**: 167–170.
- Davis, P. H. & Heywood, V. H. (1963) *Principles of Angiosperm Taxonomy*. Edinburgh: Oliver & Boyd.
- Divakar, P. K., Lumbsch, H. T., Ferencova, Z., Del Prado, R. & Crespo, A. (2010) *Remototrachyna*, a newly recognized tropical lineage of lichens in the *Hypotrachyna* clade (Parmeliaceae, Ascomycota), originated in the Indian subcontinent. *American Journal of Botany* **97**: 579–590.
- Edwards, H. G. M., Farwell, D. W., Seaward, M. R. D. & Giacobini, C. (1991) Preliminary Raman microscopic analyses of a lichen encrustation involved in

- the biodeterioration of Renaissance frescoes in central Italy. *International Biodeterioration* **27**: 1–9.
- Egan, R. S. (1972) Catalog of the lichens of New Mexico. *Bryologist* **75**: 7–35.
- Etayo, J. & Burgaz, A. R. (1997) Contribution to the lichen-forming fungi from the Canary Islands III. The genus *Cladonia*. *Annalen des Naturhistorischen Museums in Wien, Serie B für Botanik und Zoologie* **99**: 721–725.
- Evans, A. (1950) Notes on the Cladoniae of Connecticut IV. *Rhodora* **52**: 77–123.
- Evans, A. (1954) *Cladonia subrangiformis* in North America. *Rhodora* **56**: 266–272.
- Ferencova, Z., Del Prado, R., Pérez-Vargas, I., Hernández-Padrón, C. & Crespo, A. (2010) A discussion about reproductive modes of *Pseudevernia furfuracea* based on phylogenetic data. *Lichenologist* **42**: 449–460.
- Fink, B. (1904) Further notes on Cladonias. III. *Cladonia furcata* and *Cladonia crispata*. *Bryologist* **7**: 53–58.
- Fontaine, K. M., Ahti, T. & Piercey-Normore, M. D. (2010) Convergent evolution in *Cladonia gracilis* and allies. *Lichenologist* **42**: 323–338.
- Gardes, M. & Bruns, T. D. (1993) ITS primers with enhanced specificity for Basidiomycetes – application to the identification of mycorrhiza and rust. *Molecular Ecology* **2**: 113–118.
- Günzl, B. (2004) *Erdflechten und ihre Gesellschaften in Nordhessen mit besonderer Berücksichtigung der morphologischen und genetischen Variabilität bei Cladonia furcata (Hudson) Schrader*. Dissertation, Georg-August-Universität zu Göttingen.
- Hale, M. E. & Culberson, W. L. (1960) A second checklist of the lichens of the continental United States and Canada. *Bryologist* **63**: 137–172.
- Hammer, S. (1995) A synopsis of the genus *Cladonia* in the northwestern United States. *Bryologist* **98**: 1–28.
- Hariot, P. (1887) Les Cladoniées magellaniques. *Journal de Botanique (Morot)* **1**: 282–286.
- Hawksworth, D. L. (1969) The lichen flora of Derbyshire. *Lichenologist* **4**: 105–193.
- Hennipman, E. (1967) Notes on some Dutch Cladoniae (Lichenes). *Persoonia* **4**: 427–428.
- Hennipman, E. & Sipman, H. J. M. (1978) De Nederlandse Cladonia's (Lichenes). *Wetenschappelijke Mededelingen de Koninklijke Nederlandse Natuurhistorische Vereniging* **124**: 1–80.
- Hillmann, J. & Grummang, V. (1957) *Flechten. Kryptogamenflora der Mark Brandenburg und angrenzender Gebiete VIII*. Berlin: Borntraeger.
- Huovinen, K., Ahti, T. & Stenroos, S. (1990) The composition and contents of aromatic lichen substances in *Cladonia* section *Cladonia* and group *Furcatae*. *Bibliotheca Lichenologica* **38**: 209–241.
- Huneck, S., Feige, G. B. & Schmidt, J. (2004) Chemie von *Cladonia furcata* und *Cladonia rangiformis*. *Herzogia* **17**: 51–58.
- Jahns, H. M. & Beltman, H. A. (1973) Variations in the ontogeny of fruiting bodies in the genus *Cladonia* and their taxonomic and phylogenetic significance. *Lichenologist* **5**: 349–367.
- Jahns, H. M., Herold, K. & Beltman, H. A. (1978) Chronological sequence, synchronization and induction of development of fruit bodies in *Cladonia furcata* var. *furcata* (Huds.) Schrad. *Nova Hedwigia* **30**: 469–526.
- James, P. W. (2009) *Cladonia*. In *The Lichens of Great Britain and Ireland* (C. W. Smith, A. Aptroot, B. J. Coppins, A. Fletcher, O. L. Gilbert, P. W. James & P. A. Wolseley, eds): 309–338. London: British Lichen Society.
- Kotelko, R. & Piercey-Normore, M. D. (2010) *Cladonia pyxidata* and *C. pocillum*; genetic evidence to regard them as conspecific. *Mycologia* **102**: 534–545.
- Krog, H. (1968) The macrolichens of Alaska. *Norsk Polarinstutit Skrifte* **144**: 1–180.
- Leavitt, S. D., Johnson, L. & St. Clair, L. L. (2011a) Species delimitation and evolution in morphologically and chemically diverse communities of the lichen-forming genus *Xanthoparmelia* (Parmeliaceae, Ascomycota) in western North America. *American Journal of Botany* **98**: 175–188.
- Leavitt, S. D., Fankhauser, J. D., Leavitt, D. H., Porter, L. D., Johnson, L. A. & St. Clair, L. L. (2011b) Complex patterns of speciation in cosmopolitan “rock posy” lichens – discovering and delimiting cryptic fungal species in the lichen-forming *Rhizoplaca melanophthalma* species-complex (Lecanoraceae, Ascomycota). *Molecular Phylogenetics and Evolution* **59**: 587–602.
- Liu, Y. J., Whelen, S. & Hall, B. D. (1999) Phylogenetic relationships among Ascomycetes: evidence from an RNA polymerase II subunit. *Molecular Biology and Evolution* **16**: 1799–1808.
- Lohtander, K., Myllys, L., Sundin, R., Källersjö, M. & Tehler, A. (1998) The species pair concept in the lichen *Dendrographa leucophaea* (Arthoniales): analyses based on ITS sequences. *Bryologist* **101**: 404–411.
- Lumbsch, H. T. & Leavitt, S. D. (2011) Goodbye morphology? A paradigm shift in the delimitation of species in lichenized fungi. *Fungal Diversity* **50**: 59–72.
- Lutzoni, F., Kauff, F., Cox, C. J., McLaughlin, D., Celio, G., Dentinger, B., Padamsee, M., Hibbett, D., James, T. Y., Baloch, E., et al. (2004) Assembling the fungal tree of life: progress, classification, and evolution of subcellular traits. *American Journal of Botany* **91**: 1446–1480.
- Maddison, W. P. & Maddison, D. R. (2011) *Mesquite 2.75: a modular system for evolutionary analysis*. <http://mesquiteproject.org>
- Maechler, M., Rousseeuw, P., Struyf, A., Hubert, M. & Hornik, K. (2014) *Cluster: cluster analysis basics and extensions*. R package, Version 1.15.2.
- Merrill, G. K. (1909) Lichen notes, no. 8: *Cladonia multiformis* (nom. nov.). *Bryologist* **12**: 1–5.
- Nelsen, M. P. & Gargas, A. (2009) Symbiont flexibility in *Thamnomia vermicularis* (Pertusariales: Icmadophilaceae). *Bryologist* **112**: 404–417.
- Nimis, P. L. (1993) *The Lichens of Italy. An Annotated Catalogue*. Torino: Museo Regionale di Scienze Naturali.

- Nylander, J. A. A. (2004) *MrModelTest* 2.3. Program distributed by the author. Evolutionary Biology Centre, Uppsala University.
- Nylander, J. A. A., Wilgenbusch, J. C., Warren, D. L. & Swofford, D. L. (2008) AWTY (are we there yet?): a system for graphical exploration of MCMC convergence in Bayesian phylogenetics. *Bioinformatics* **24**: 581–583.
- Ott, S., Brinkmann, M., Wirtz, N. & Lumbsch, H. T. (2004) Mitochondrial and nuclear ribosomal DNA data do not support the separation of the Antarctic lichens *Umbilicaria kappenii* and *Umbilicaria antarctica* as distinct species. *Lichenologist* **36**: 227–234.
- Osyczka, P. & Rola, K. (2013) Phenotypic plasticity of primary thallus in selected *Cladonia* species (lichenized Ascomycota: *Cladoniaceae*). *Biologia* **68**: 365–372.
- Osyczka, P. & Skubala, K. (2011) Chemical races of *Cladonia cariosa* and *C. symphyocarpa* (lichenized Ascomycota) – a Polish case study in a worldwide context. *Nova Hedwigia* **93**: 363–373.
- Osyczka, P., Rola, K., Lenart-Boroń, A. & Boroń, P. (2014) High intraspecific genetic and morphological variation in the pioneer lichen *Cladonia rei* colonising slag dumps. *Central European Journal of Biology* **9**: 579–591.
- Ozenda, P. & Clauzade, G. (1970) *Les Lichens: Étude Biologique et Flore Illustrée*. Paris: Masson & Cie.
- Parnmen, S., Rangsirujij, A., Mongkolsuk, P., Boonpragob, K., Nutakki, A. & Lumbsch, H. T. (2012) Using phylogenetic and coalescent methods to understand the species diversity in the *Cladonia aggregata* complex (Ascomycota, Lecanorales). *PLoS One* **7**: e52245.
- Paus, S. M. (1997) Die Erdflechtenvegetation Nordwestdeutschlands und einiger Randgebiete. *Bibliotheca Lichenologica* **66**: 1–222.
- Pino-Bodas, R., Burgaz, A. R. & Martín, M. P. (2010) Elucidating the taxonomic rank of *Cladonia subulata* versus *C. rei* (*Cladoniaceae*). *Mycotaxon* **113**: 311–326.
- Pino-Bodas, R., Burgaz, A. R., Martín, M. P. & Lumbsch, H. T. (2011) Phenotypic plasticity and homoplasmy complicate species delimitation in the *Cladonia gracilis* group (*Cladoniaceae*, Ascomycota). *Organisms Diversity and Evolution* **11**: 343–355.
- Pino-Bodas, R., Burgaz, A. R. & Martín, M. P. (2012a) *Cladonia suburgida* and *C. iberica* (*Cladoniaceae*) form a single, morphologically and chemically polymorphic species. *Mycological Progress* **11**: 269–278.
- Pino-Bodas, R., Ahti, T., Stenroos, S., Martín, M. P. & Burgaz, A. R. (2012b) *Cladonia conista* and *C. humilis* (*Cladoniaceae*) are different species. *Bibliotheca Lichenologica* **108**: 161–176.
- Pino-Bodas, R., Ahti, T., Stenroos, S., Martín, M. P. & Burgaz, A. R. (2013) Multilocus approach to species recognition in the *Cladonia humilis* complex (*Cladoniaceae*, Ascomycota). *American Journal of Botany* **100**: 664–678.
- Pišút, I. & Wagner, B. (1973) Doplnek k rozsireni lisejniku *Cladonia furcata* (Huds.) Schrad. subsp. *subrangiformis* (Sandst.) des Abb. a *Collema crispum* (Huds.) Web. var. *crispum* v Cechach. *Zprávy České Botanické Společnosti* **8**: 27–29.
- R Core Team. (2013) *R: A language and environment for statistical computing*. R Foundation for Statistical Computing, Vienna, Austria. URL: <http://www.R-project.org/>.
- Rambaut, A. (2002) *Se-Al v2.0a11: sequence alignment editor*. Available from <http://evolve.zoo.ox.ac.uk/>.
- Rambaut, A. & Drummond, A. J. (2009) *Tracer version 1.5*. Website: <http://tree.bio.ed.ac.uk/software/tracer/>.
- Ronquist, F., Teslenko, M., van der Mark, P., Ayres, D., Darling, A., Höhna, S., Larget, B., Liu, L., Suchard, M. A. & Huelsenbeck, J. P. (2012) MrBayes 3.2: efficient Bayesian phylogenetic inference and model choice across a large model space. *Systematic Biology* **61**: 539–542.
- Ruoss, E. & Huovinen, K. (1989) Die intraspezifische Variabilität der phenolischen Inhaltsstoffe bei der Rentierflechte *Cladonia arbuscula*. *Nova Hedwigia* **48**: 253–279.
- Sandstede, H. (1922) Die Cladonien der nordwestdeutschen Tieflandes und der deutschen Nordseeinseln. III. *Abhandlungen des Naturwissenschaftlichen Vereins zu Bremen* **25**: 89–273.
- Sandstede, H. (1931) Die Gattung *Cladonia*. In *Kryptogamen-Flora von Deutschland, Österreich und der Schweiz, Neunter Band, Die Flechten* (C. L. Rabenhorst, ed.): 1–531. Leipzig: Borntraeger.
- Schade, A. (1957) Über Hapteren bei der Flechte *Cladonia rangiformis* Hoffm. *Berichte der Deutschen Botanischen Gesellschaft* **70**: 283–290.
- Schade, A. (1964) *Cladonia furcata* (Huds.) Schrad. und die Ursachen ihrer schwierigen Taxonomie. Die Flechten Sachsens VIII. *Abhandlungen und Berichte des Naturkundemuseums Görlitz* **39**: 1–39.
- Schade, A. (1966) Über die Artberechtigung der *Cladonia subrangiformis* Sandst. sowie das Auftreten von Calciumoxalat-Exkreten bei ihr und einigen anderen Flechten. *Nova Hedwigia* **11**: 285–308.
- Scotland, R. W., Olmstead, R. G. & Bennett, J. R. (2003) Phylogeny reconstruction: the role of morphology. *Systematic Biology* **52**: 539–548.
- Sembdner, G. (1958) Standortseinflüsse auf die anatomische und morphologische Ausgestaltung bei einigen *Cladonia*-Arten. *Flora* **145**: 589–611.
- Stamatakis, A. (2006) RAxML-VI-HPC: maximum likelihood-based phylogenetic analyses with thousands of taxa and mixed models. *Bioinformatics* **22**: 2688–2690.
- Steinová, J., Stenroos, S., Grube, M. & Škaloud, P. (2013) Genetic diversity and species delimitation of the zeorin-containing red-fruited *Cladonia* species (lichenized Ascomycota) assessed with ITS rDNA and  $\beta$ -tubulin data. *Lichenologist* **45**: 665–684.
- Stenroos, S. (1988) The family *Cladoniaceae* in Melanesia 3. *Cladonia* sections *Helopodium*, *Perviae* and *Cladonia*. *Annales Botanici Fennici* **25**: 117–148.

- Stenroos, S., Ferraro, L. I. & Ahti, T. (1992) Líquenes *Lecanorales: Cladoniaceae*. *Flora Criptogámica de Tierra del Fuego* **13**: 1–111.
- Stenroos, S., Hyvönen, J., Myllys, L., Thell, A. & Ahti, T. (2002) Phylogeny of the genus *Cladonia* s. lat. (*Cladoniaceae*, Ascomycetes) inferred from molecular, morphological, and chemical data. *Cladistics* **18**: 237–278.
- Tehler, A., Dahlkild, Å., Eldenäs, P. & Feige, G. B. (2004) The phylogeny and taxonomy of Macaronesian, European and Mediterranean *Roccella* (*Roccellaceae*, *Arthomiales*). *Symbolae Botanicae Upsalienses* **34**: 405–428.
- Tehler, A., Irestedt, M., Bungartz, F. & Wedin, M. (2009) Evolution and reproduction modes in the *Roccella galapagoensis* aggregate (*Roccellaceae*, *Arthomiales*). *Taxon* **58**: 438–456.
- Thomson, J. W. (1968, '1967') *The Lichen Genus Cladonia in North America*. Toronto: University of Toronto Press.
- Ullrich, J. (1956) Beobachtungen an Cladonien. 1. Partiiell isolaterale Primärthalli der Cladonien. 2. Zur Artberechtigung von *Cladonia subrangiformis* Scriba. *Berichte der Deutschen Botanischen Gesellschaft* **69**: 239–244.
- Vagts, I., Kinder, M. & Müller, J. (1994) The effect of agrochemicals on the growth of *Cladonia furcata*. *Lichenologist* **26**: 73–82.
- Vainio, E. A. (1887) *Monographia Cladoniarum universalis*. 1. *Acta Societatis pro Fauna et Flora Fennica* **4**: 1–509.
- Velmala, S., Myllys, L., Halonen, P., Goward, T. & Ahti, T. (2009) Molecular data show that *Bryoria fremontii* and *B. tortuosa* (*Parmeliaceae*) are conspecific. *Lichenologist* **41**: 231–242.
- Verseghy, K. (1975) Talajlakó xerofiton zuzmófajok ökológiája es elterjedése Magyarországon (II.) s néhány taxon revisioja. *Studia Botanica Hungarica* **10**: 41–61.
- Wadsten, T. & Moberg, R. (1985) Calcium oxalate hydrates on the surface of lichens. *Lichenologist* **17**: 239–245.
- Wei, J. C. & Ahti, T. (2002) *Cetradonia*, a new genus in the new family *Cetradoniaceae* (*Lecanorales*, Ascomycota). *Lichenologist* **34**: 19–31.
- White, F. J. & James, P. W. (1985) A new guide to microchemical techniques for the identification of lichen substances. *British Lichen Society Bulletin* **57** (supplement): 1–41.
- White, T. J., Bruns, T., Lee, S. B. & Taylor, J. W. (1990) Amplification and direct sequencing of fungal ribosomal RNA genes for phylogenetics. In *PCR Protocols: A Guide to Methods and Applications* (M. A. Innis, D. H. Gelfand, J. J. Sninsky & T. J. White, eds): 315–322. San Diego: Academic Press.
- Winston, J. E. (1999) *Describing Species: Practical Taxonomic Procedure for Biologists*. New York: Columbia University Press.
- Wirth, V. (1995) *Flechtenflora*. 2nd edn. Stuttgart: Verlag Eugen Ulmer.
- Wirtz, N., Printzen, C. & Lumbsch, H. T. (2008) The delimitation of Antarctic and bipolar species of neuropogonoid *Usnea* (Ascomycota, *Lecanorales*): a cohesion approach of species recognition for the *Usnea perpusilla* complex. *Mycological Research* **112**: 472–484.