

Challenges in the quantitation of naturally generated bioactive peptides in dry-cured meats

Leticia Mora¹, Marta Gallego¹, Milagro Reig² and Fidel Toldrá^{1*},

1 Instituto de Agroquímica y Tecnología de Alimentos (CSIC), Avenue Agustín Escardino 7, 46980 Paterna, Valencia, Spain

2 Instituto de Ingeniería de Alimentos para el Desarrollo, Universidad Politécnica de Valencia, Camino de Vera s/n, 46022 Valencia, Spain

** Corresponding author: Tel: +34963900022 ext.2112; fax: +34963636301.*

E-mail address: ftoldra@iata.csic.es

22 **Abstract**

23 *Background*

24 The final characteristics of dry-cured meats depend on many factors but one of the most
25 important is the intense proteolysis occurred in muscle proteins due to the action of
26 endogenous enzymes in ham, and also microbial peptidases in the case of dry-fermented
27 meats, that not only affects taste and flavour but also the generation of bioactive peptides.

28 *Scope and approach*

29 In this review main difficulties in the identification of bioactive peptides in dry-cured
30 meats have been described. This study highlights the novel strategies used during the last
31 years to identify naturally generated peptides, and emphasises the need of robust
32 quantitative methodologies for the adequate characterisation of their bioavailability. In
33 fact, the most common and well established quantitation approaches using proteomics are
34 not adapted for peptidomics analysis, so alternative strategies need to be considered.

35 *Key findings and conclusions*

36 The progress in the identification and characterisation of the activity of natural bioactive
37 peptides is highly dependent on modern instruments and bioinformatics tools as well as
38 updated protein databases. In fact, the use of *in silico* approaches and proteomics can be
39 complementary tools in the identification of peptides from meat protein sources as the
40 empirical experimental design can be simplified by using bioinformatics for computer
41 simulation in most of the steps. Finally, Multiple Reaction Monitoring mass spectrometry
42 methodology previously used in the quantitation of therapeutic peptides and biomarkers
43 arises as a powerful tool for absolute quantitation or semi-quantitation of bioactive
44 peptides.

45

Keywords: peptidomics, quantitation, small peptides, naturally generated peptides,
bioactive peptides, dry-cured meat, dry-cured ham, dry-fermented sausages

Highlights

- Dry-cured meat described as a source of naturally-generated bioactive peptides.
- Antioxidant, antihypertensive and antimicrobial peptides identified in dry-cured ham.
- Quantitation is still a challenge due to complex matrix, small size and low abundance of peptides.
- Modifications in multiple reaction monitoring approaches as an alternative to peptides quantitation.

1. Introduction

Bioactive peptides have been of great interest in last decades from the point of view of different disciplines such as pharmaceutical, clinical, functional foods or nutriomics. In fact, synthetic bioactive peptides are being used in therapeutic applications contributing to the treatment of cardiovascular, gastrointestinal, immunosuppression, diabetic, osteoporotic, obesity, antibacterial or oncologic diseases (Fosgerau & Hoffmann, 2015). However, despite the convenience of synthesising/modifying peptides to convert them in more therapeutical and cost-effective compounds, synthetic peptides have resulted to cause numerous and severe side-effects. In this sense, new tendencies in the discovery of drug candidates followed during the last years involve the study of natural bioactive peptides as their accumulation in organs such like kidney and liver is very low, resulting in a minimal development of the most severe toxic side-effects.

Pork raw meat has been previously identified as a source of ACE inhibitory peptides when digested under controlled conditions of hydrolysis using eight different proteases (Arihara, Nakashima, Mukai, Ishikawa, & Itoh, 2001; Katayama et al., 2003) as well as after simulated *in vitro* gastrointestinal digestion (Escudero, Sentandreu, Arihara, & Toldrá, 2010; Escudero, Toldrá, Sentandreu, Nishimura, & Arihara, 2012). The generation of certain bioactive peptides from dry-cured meat products depends on the activity of endogenous muscular enzymes, which is very affected by differences in the type of muscle and genetics of raw material as well as processing conditions including added ingredients and time of curing (Mora, Calvo, Escudero & Toldrá, 2016). Recently, peptide extracts of Spanish Teruel, Italian Parma and Belgian dry-cured ham have been evaluated for their ACE-inhibitory and antioxidant activity, showing differential peptide

sequences according to the type of ham (Mora, Escudero, & Toldrá, 2016). Despite the observed differences in the peptides profile, the bioactive potential of the tested fractions was very similar in the three types of ham although a significant increase in ACE-inhibitory activity of Spanish Teruel dry-cured ham was observed, probably due to the longer time of curing of its process. **Table 1** shows the sequences of bioactive peptides identified in dry-cured meat products ham and their IC₅₀ values.

However, the study of these peptides with the aim to be included as a part of a functional food also involves the challenge of reaching the blood stream and/or organ of interest to exert its biological activity, especially considering the difficulties due to the low availability of the peptides when orally administered. This fact occurs as a result of its inactivation by saliva, gastric acid, and proteases participating in the gastrointestinal (GI) digestion as well as the difficulty of crossing intact the intestinal barrier which very frequently ends in the degradation of the bioactive peptides by the action of transepithelial transport cells or blood peptidases (Gallego, Grootaert, Mora, Aristoy, Van Camp, & Toldrá, 2016).

Several databases compiling the sequences of bioactive peptides described in the literature are frequently used and result very useful in the identification by comparison of similarities of most active peptides in bottom-up approaches (Carrasco-Castilla, Hernández-Álvarez, Jiménez-Martínez, Gutiérrez-López & Dávila-Ortiz, 2012).

However, there is a lack of information about the concentration of these bioactive peptides in the generated food as well as the amount of peptides bioavailable in the blood stream after GI digestion. In fact, the quantitation of bioactive peptides faces up to several difficulties due to their small molecular size, that is between metabolomics and proteomics disciplines, and the complexity of food matrices. Thus, the use of advanced mass spectrometry techniques is critical to identify the sequence of these small peptides

and to develop fast, precise and sensitive methodologies for their quantitation from difficult matrices such as dry-cured meat products.

2. Dry-cured meat as a source of naturally generated peptides

The food-derived peptidome comprises an immense source of peptides showing an unlimited combination of residues with high bioactive potential. Most of these peptides form part of a parent protein, being inactive in that form and needing to be released in order to be transported into the blood stream and exert their activity.

Food peptides can be naturally generated and be present in food products that are consumed fresh or raw. In this sense, specific food processes including curing or fermentation like cheese, wine, dry-cured meats, etc., have been widely described as a source of bioactive peptides (Corrêa et al., 2014; Mohanty, Mohapatra, Misra, & Sahu, 2016). Other key mechanisms to obtain bioactive peptides are GI digestion due to the action of salivary, stomachal, intestinal and pancreatic enzymes (Capriotti et al., 2015; Pepe et al., 2016) and the most widely extended *in vitro* digestion using controlled and commercial peptidases or microorganisms mainly used for revalorisation of food by-products (Ryder, Bekhit, McConnell, & Carne, 2016), as described in **Figure 1**.

Dry-cured meats are elaborated through a salting process followed by ripening/drying, which give to these products their characteristic organoleptic properties as well as good stability at room temperature. There are 2 major groups of dry-cured meats: Those based on whole muscles (i.e. dry-cured ham), or those using grinded meat that is cased (i.e. salami-type sausages, chorizo, etc).

Dry-curing of ham is a long process that can take from several months up to a few years. It occurs in chambers and following the stages of salting, post-salting, and ripening/curing. The water activity of the product decreases during its processing and different biochemical phenomena take place. Proteolysis is considered the most important

mechanism responsible for the degradation of muscle proteins and for main changes observed in texture and flavour of the final product (Toldrá, 2012). In this sense, endopeptidases, essentially cathepsins and calpains, are able to cleave myofibrillar proteins, affecting the texture and also giving rise to large polypeptides which are later degraded by exopeptidases, such as aminopeptidases or carboxipeptidases among others, into small peptides and free amino acids (Toldrá & Flores, 1998; Toldrá, 2006).

On the other hand, dry-fermented sausages are elaborated using shorter processes with microorganisms such as lactic acid bacteria (LAB), responsible of fermentation followed by ripening/drying. The proteolytic system of LAB comprises a cell wall-bound proteinase, peptide transporters, and various intracellular peptidases, including endopeptidases, aminopeptidases, tripeptidases and dipeptidases (Christensen, Dudley, Pederson, & Steele, 1999), which has been proved to mainly influence the last period of curing and also contributing to the generation of small peptides and free amino acids (Toldrá & Flores, 2011).

Previous studies have described the role of peptidases in the generation of peptides in dry-cured meat products (Toldrá, 2012) and the intense protein degradation that occurs (Di Luccia, et al., 2005). Moreover, proteolysis in dry-fermented products has been studied and the degradation of main myofibrillar and sarcoplasmic proteins has been described using SDS-PAGE analysis (Hughes et al., 2002; López, Bru, Vignolo, & Fadda, 2015; Chen, Kong, Han, Liu, & Xu, 2016). The generated peptides have been less studied in dry-fermented meat products. In this sense, dry-fermented sausages have been recently characterised using a peptidomic approach that reported the intense proteolysis occurred during its processing due to the action of peptidases from muscle and LAB added in the starter (Mora, Escudero, Aristoy & Toldrá, 2015; Mora et al., 2015). In this study, the

influence of added sodium caseinate on the amount of generated peptides at the end of the curing has been described.

However, the specific generated sequences from myofibrillar and sarcoplasmic proteins have only been described more recently in dry-cured ham (Mora, Gallego, Aristoy, Fraser, & Toldrá, 2015) due to the need of modern mass spectrometry (MS) techniques in the analysis of naturally generated peptides. Thus, peptides from the myofibrillar proteins titin (Gallego, Mora, Aristoy & Toldrá, 2015), myosin light chain (Mora, Sentandreu, & Toldrá, 2011), troponin T (Mora, Sentandreu, & Toldrá, 2010), LIM domain-binding protein 3 (Gallego, Mora, Fraser, Aristoy, & Toldrá, 2014), and actin (Sentandreu et al., 2007), as well as sarcoplasmic proteins creatine kinase (Mora, Sentandreu, Fraser, Toldrá, & Bramley, 2009), glycolytic enzymes (Mora, Valero, Del Pino, Sentandreu, & Toldrá, 2011), and myoglobin (Mora & Toldrá, 2012) have been described using peptidomic strategies based on MS/MS analysis.

Thus, thousands of peptides with sizes ranging from 3 to 30 amino acids length have been identified in dry-cured meats, proving the capacity of these food products as a source of naturally generated peptides that could potentially exert bioactive capacity due to their properties.

3. Difficulties in the analysis of naturally generated bioactive peptides

First approaches in proteomics were developed and optimised for the identification of protein biomarkers in pharmacology and medicine applications. The most frequently used strategy includes a first step of SDS-PAGE separation, where proteins were isolated according to their isoelectric point and molecular mass (Bantscheff, Schirle, Sweetman, Rick & Kuster, 2007).

In proteomics there are two main strategies depending on the use of single MS or MS in tandem. Thus, after separation, proteins of interest are selected and in-gel digested with

specific proteases like trypsin, which specifically cleaves the protein on the C-terminal side of the basic amino acids Arg and Lys. The peptides obtained were analysed by MS, achieving a list of peaks named peptide mass fingerprint. This experimental mass profile is matched against the theoretical masses obtained from the *in silico* digestion of all protein sequences in the database. The search engine ranks the identified proteins according to a score number that is calculated from the number of fragment masses matching the theoretical peptide masses contained in the protein databases. On the other hand, the use of modern MS techniques with analysers in tandem allows a faster and more reliable identification of a protein using very small number of peptide fragments (Aebersold & Mann, 2003). The most used search engines are Mascot (http://www.matrixscience.com/search_form_select.html), SEQUEST (<http://fields.scripps.edu/sequest/>), Phenyx (http://www.ionsource.com/functional_reviews/Phenyx/phenyx-web.htm), MassWiz (Yadav, Kumar, & Dash, 2011), Hydra (Lewis et al., 2012), and the free softwares OMSSA (<https://www.ncbi.nlm.nih.gov/Web/Newsltr/V14N2/>) and X!Tandem (<http://www.thegpm.org/tandem/>). A scheme of main analytical strategies used in mass spectrometry is shown in **Figure 2**.

Bioactive peptides are small sequences usually between 2 and 20 amino acids that can belong, especially the shortest, to hundreds of protein sequences. The identification of bioactive peptides relies on the detection of a very small molecule showing low abundance and hidden behind the complex matrix of food. This fact is a challenge as the most common bottom-up proteomics strategies followed in the identification of protein biomarkers from tryptic peptides cannot be used. In fact, differences in the hydrolysis of naturally generated peptides during dry-curing process in comparison with controlled enzyme proteolysis impacts on the identification of peptides (Panchaud, Affolter &

Kussmann, 2012). It is mainly due to the wide combination of sizes of the generated peptides and complex hydrolysis that results in a mixture of peptides with unspecific cleavage sites and broader physical and chemical properties showing a wide variety of charges (from 1+ to 6+) when ionising using the very common electrospray ionisation (ESI) in mass spectrometric approaches. Then, there is a need of specific strategies and procedures as well as adapted methodologies and bioinformatics tools for the management of peptidomics data as compared to proteomics.

4. Novel strategies in the identification of naturally generated bioactive peptides

Bioactive peptides present in food matrices are currently identified following strategies very different in cost, time-consuming and effectivity that very frequently require the use of modern bioinformatics tools and processes to analyse data. Traditionally, bioactive peptides have been empirically identified starting with the selection of a protein and its subsequent hydrolysis with proteases. The obtained pull of peptides is fractionated and purified for the identification of the generated sequences by MS in tandem. Then, peptides were synthesised and tested *in vitro* for their bioactivities and later deposited in open access databases such as BIOPEP (Minkiewicz, Dziuba, Iwaniak, Dziuba, & Darewicz, 2008), PEPBANK (Shtatland, Guettler, Kossodo, Pivovarov, & Weissleder, 2007), or ERP-Moscow (Zamyatnin, Borchikov, Vladimirov, & Voronina, 2006; <http://erop.inbi.ras.ru/>). The information contained in these databases together with the sometimes limited bibliographic description of the characteristics of peptides exerting certain activities provide data about which of the identified sequences by MS/MS could be good potential candidates to exert the studied bioactivity (Pihlanto-Leppälä, 2001). In this way, ACE-inhibitory peptides have been described to contain Pro, Lys or aromatic residues preferably in any of the three positions closest to the C-terminal site, whereas

the antioxidant activity of peptides has been described to be closely related to their molecular mass, amino acid composition, sequence length and hydrophobicity (Rajapakse, Mendis, Jung, Je, & Kim, 2005; Escudero, Mora, Fraser, Aristoy, & Toldrá, 2013). However, the screening of bioactive peptides from novel substrates using the empirical approach is expensive and time-consuming because it involves using previous reported studies to select proteases that demonstrate the highest potential to liberate the bioactive peptides, and later assay the *in vitro* activity of the generated peptides.

The experimental design can be simplified by using bioinformatics for computer simulation in most of the steps. Thus, the selection of the protein could be done by determining the occurrence frequency of bioactive sequences in the protein which results very useful as bioactive peptide sequences comply with certain requisites according to the type of activity. Certain tools such as PATTINPROT from PBIL server (https://npsa-prabi.ibcp.fr/cgi-bin/npsa_automat.pl?page=/NPSA/npsa_pattinprot.html) scan a protein sequences or database searching for one or several patterns previously established (Combet, Blanchet, Geourjon, & Deléage, 2000). Then, different tools were used to obtain the theoretical potential prediction of several known protein sequences to generate bioactive peptides, using enzymes with known cleavage specificities. The hydrolysis of the selected protein is simulated to generate *in silico* peptide profiles using bioinformatics tools such as BIOPEP, where it is possible to simulate the digestion with up to three different enzymes simultaneously; PeptideMass from ExPASy (Wilkins et al., 1997; Gasteiger et al., 2005), very intuitive and extended; or PoPS (Boyd, Garcia de la Banda, Pike, Whisstock, & Rudy, 2005), a tool that allows the prediction of substrate cleavages using protease specificity models that have to be uploaded by the user. Finally, the sequences generated by simulation are matched with the peptides of bioactive databases looking for coincidences. Some authors have reported the optimisation of Quantitative

Structure-Activity Relationship (QSAR) models to predict the most interesting food proteins for the generation of ACE-inhibitory peptides (Wu, Aluko, & Nakai, 2006a,b) from the *in silico* digested profiles obtained using PeptideMass from ExPASy (Gu, Majumder, & Wu, 2011).

But when considering the exclusive use of predictive approaches, many potentially bioactive sequences could be ignored as they are not included in the bioactive peptide databases. To avoid this situation, peptides can be analysed *in silico* to identify desirable amino acids at certain position or interesting characteristics that make them potent candidates to exert bioactivity using the software PeptideRanker, which identify among a set of peptides those that may be more likely to be bioactive by giving a list of scores. This predictive tool is based on such general shared features of bioactive peptides across different functional classes and aid in the improved design of existing bioactive peptides (Mooney, Haslam, Pollastri, & Shields, 2012). On the other hand, the online tool EnzymePredictor (<http://bioware.ucd.ie/~enzpred/Enzpred.php>) evaluates the evidence for which enzymes are most likely to have cleaved a sample containing peptides from hydrolysed proteins, which would result very useful to drive hydrolysis processes towards the generation of certain specific bioactive peptides (Vijayakumar et al., 2012).

Finally, the prediction of the three-dimensional structure of peptides from their amino acid sequence and post-traductional modifications is very important in peptidomics because the structure of the peptide can affect its functionality. Thus, on-line tools such as PEPstrMOD (<http://osddlinux.osdd.net/raghava/pepstrmod/>) or PEP-FOLD (<http://bioserv.rpbs.univ-paris-diderot.fr/services/PEP-FOLD/>) for peptides with length range between 7-25 (Kaur, Garg, & Raghava, 2007) and 9-36 residues (Thévenet et al., 2012), respectively, allow the prediction of multiple *de novo* peptide structures for linear and cyclic peptides.

One of the most studied bioactivity in foods is the ACE-inhibitory activity due to the relation of this enzyme with the regulation of blood pressure and its importance as a controllable risk factor for cardiovascular diseases. In this sense, BIOPEP database (<http://www.uwm.edu.pl/biochemia/>) contains a classification of main bioactivities described in the literature, including a total of 3285 sequences of bioactive peptides mainly showing ACE-inhibitory, antioxidant and antibacterial activities in a percentage distribution of 21.6, 16.1 and 14.1%, respectively (Minkiewicz et al., 2008), as indicated in **Figure 3**.

Several studies of Spanish dry-cured ham have described ACE-inhibitory and antioxidant activity in certain of the naturally generated peptides determined empirically using consecutive fractionation steps to isolate the most active fractions and, thus, identify the peptides by MS in tandem. Some of the identified peptides were selected as potential bioactive based on their length, amino acid composition, and amino acid location in the sequence (Pihlanto-Leppälä, 2001). **Figure 4** shows the peptides profile obtained after MALDI-ToF mass spectrometry analysis of an aqueous extract of dry-cured ham. Regarding the bioactive potential of meat products, a peptide extract from Iberian dry-cured ham showed a significant decrease in systolic blood pressure (SBP) of 12 mmHg after 8h of ingestion in spontaneously hypertensive rats (SHR). The analysis resulted in the identification of 2632 sequences of peptides containing the previously described ACE-inhibitory fragments PPK, PAP, and AAP repeated a total of 322, 302, and 119 times, respectively (Mora, Escudero, Arihara, & Toldrá, 2015).

Additionally, the most active fractions and peptides identified in Spanish dry-cured ham have also been tested *in vivo* for their antihypertensive activity using the SHR model. Fractions from size-exclusion chromatography corresponding to molecular masses lower than 1700 Da showed the most intense antihypertensive activity with a decrease in

systolic blood pressure (SBP) of 38.38 mmHg in spontaneous hypertensive rats after 8 hours of ingestion (Escudero, Aristoy, Nishimura, Arihara & Toldrá, 2012), whereas peptide AAATP with an *in vitro* IC₅₀ value of 100 µM showed a decrease in the SBP of 25.62 mmHg after 8h administration in SHR (Escudero, Mora, Fraser, Aristoy, Arihara & Toldrá, 2013). Also fractions obtained after GI digestion of Parma dry-cured ham of 18 and 24 months of curing were analysed to identify ACE-inhibitory peptides using a combination of an *in silico* model and the traditional *in vitro* approach, resulting in the identification of several small peptides such as LGL and SFVTT with IC₅₀ values of 145 and 395 µM, respectively (Dellafiora, Paoletta, Dall'Asta, Dossena, Cozzini, & Galaverna, 2015). On the other hand, the influence of starter culture and protease addition on the bioactive capacity of dry-fermented sausages has also been recently evaluated (Fernández et al., 2016). In this study, dry-fermented sausages were prepared using *Pedococcus acidilactici* MS200 and *Staphylococcus vitulus* RS34 as starter culture and were also inoculated with the protease Erg222. Results showed an increase in the ACE-inhibitory and antioxidant activities in those batches with the protease after 63 days of ripening, showing a very good stability after simulated *in vitro* GI digestion.

Dry-cured meats have also been studied as a natural source of antioxidant peptides. In fact, apart from antioxidant peptides generated during processing, dry-cured hams have been described to contain antioxidants that are naturally present in meat as, for example, some free amino acids, dipeptides carnosine and anserine, ubiquinone, or alpha-tocopherol among others (Marušić, Aristoy, & Toldrá, 2013). In this sense, Jinhua ham and Xuanwei ham from China have been described to show antioxidant activity resulting in the identification of some natural peptide sequences. The sequence GKFNV was presented as the main peptide playing a key role as a scavenger of free radicals in a Jinhua ham extract (Zhu et al., 2013), whereas the tetrapeptide DLEE was identified in Xuanwei

ham as one of the key peptides responsible for the observed antioxidant activity, showing a DPPH radical scavenging activity of 74.45% at a concentration of 0.5 mg/mL (Xing, et al., 2016). In a recent study, different antioxidant peptides from Jinhua ham were isolated and identified such as the sequences DLEE, GKFNV, and LPGGGHGDLD which were tested using DPPH radical scavenging and hydroxyl radical scavenging assays (Zhu, Zhang, Zhou, & Xu, 2016). In this sense, Escudero, Mora, Fraser, Aristoy and Toldrá (2013) reported that the water soluble extract of Spanish dry-cured ham contained a large amount of potentially antioxidant peptides. This fact was confirmed with the identification of the peptide SNAAC with an IC₅₀ value of 75.2 µM in DPPH radical-scavenging assay and 205 µM in ferric-reducing antioxidant power assays (Mora, Escudero, Fraser, Aristoy, & Toldrá, 2014).

On the other hand, the presence of antimicrobial peptides in dry-meats increases the value of these products that offer the advantage of improving their safety when additional treatments such as slicing or packaging are used. In fact, the development of pathogen microorganisms such as *Listeria monocytogenes* is an important concern due to its resistance to drying and high salt content. Recently, a novel antilisterial peptide with sequence RHGYM was identified in Spanish dry-cured ham of 10 months of curing showing a MIC value of 6.25 mM (Castellano et al., 2016).

6. Current interest, requirements and main challenges in quantitative peptidomics

A better knowledge about the concentration of certain bioactive peptides identified in food products is crucial in future studies of bioavailability as well as to reach more realistic conclusions about the effect that could be expected for an active peptide in the organism. In fact, the effect and impact of a bioactive peptide in an organic system depends on the amount that is ingested and its ability to reach the blood stream or the organ of interest. Thus, the quantitation data of identified bioactive peptides is a

370 necessary aim for a better understanding of the effects and mechanisms that involve the
371 action of these compounds.

372 There are numerous methodologies for the study of protein levels, which can be
373 summarised in two main approaches: the use of labelling techniques and the use of label-
374 free techniques (Bantscheff, Schirle, Sweetman, Rick & Kuster, 2007). In peptidomics,
375 label-free methodologies involve studies based on the comparison of peptide amounts
376 between two or more samples. It can be performed by spectral counting or by extracting
377 peptide intensities. Spectral counting is based on counting the total number of times a
378 peptide is selected for fragmentation and spectra is identified in an MS/MS experiment.

379 The peak intensity-based approach correlates the extracted ion chromatogram area with
380 the concentration of that particular peptide by comparison between samples. However,
381 the abundance estimation in a comparative analysis is subjected to variations because the
382 ionisation of peptides that depends on their sequence, the presence of predominant
383 peptides can suppress bioactive peptides signals, and the search engine algorithm and
384 settings could limit the detection/identification in the data analysis step (Zapata & Wick,
385 2012). Despite this fact, there are a number of advantages as it does not require extra
386 sample preparation, can be performed with very low amounts of sample, is less time-
387 consuming and has a lower cost. This methodology has been used in food for the relative
388 quantitation of protein abundances between two or more sets of samples. Regarding
389 bioactive peptides, a spectral counting label-free approach has been recently described to
390 characterise differences in the peptide profile of raw and pasteurised ovine milk cheese
391 and to relate it with the bioactive potential (Pisanu et al., 2015). Moreover, label-free
392 quantitation has been used to determine differences in the peptide profile of Spanish
393 Teruel, Italian Parma and Belgian dry-cured hams and its potential bioactivity (Mora et
394 al., 2016).

395 On the other hand, a semiquantitative methodology has been also described with
396 oligopeptides from Grana Padano cheese, using the extracted ion chromatograms (XICs)
397 obtained from the total ion chromatogram (TIC) and by comparison with the XIC of the
398 internal standard Phe-Phe, showing the result as a ratio value (Sforza, Ferroni, Galaverna,
399 Dossena, & Marchelli, 2003). A similar approach has also been described to study the
400 cocoa oligopeptide fraction after fermentation (Marseglia et al., 2014).

401 Labelling techniques are considered the most accurate method available for quantitation.
402 However, these approaches require expensive labelling reagents, high amounts of sample
403 and a long and tedious preparation. Most common stable isotope labelling techniques
404 comprise the modification of the peptides with isobaric tags (iTRAQ or Tandem Mass
405 Tags) and the labelling of proteins with isotope tags (ICAT or SILAC) (Rauh, 2012).
406 However, one of the challenges using labelling techniques in naturally generated peptides
407 is the lack of Cys residues in most of endogenous peptides as thiol groups of Cys are
408 necessary to react with the reagents that form isotopic labels. Complementarily, nearly
409 all endogenous peptides have either a free N-terminus or a Lys residue to label free amine
410 groups so result optimal for this type of labelling. However, if free amine is converted
411 into a neutral or negative residue and the peptide does not contain Arg or His residue, it
412 cannot be positively ionised and detected in the mass spectrometer. The Multiple
413 Reaction Monitoring (MRM) is currently the most used methodology in the quantitation
414 of bioactive peptides. It has been used during decades for the quantitation of therapeutic
415 peptides and biomarker candidates in plasma, serum and urine (Rauh, 2012) and
416 nowadays has started to be introduced in the area of food science. The MRM is usually
417 performed on an ion trap or triple quadrupole mass spectrometer where the ion of interest
418 is selected with the first mass analyser Q1 and induced to fragment by collision-activated
419 dissociation in the collision cell Q2. The resulting ions are uniquely derived from the

peptide of interest and are analysed using the third quadrupole Q3 (Picotti & Aebersold, 2015). When multiple target fragment ions resulting from multiple precursor ions are monitored, the overall process is termed multiple reaction monitoring. The development of the assay for the quantitation of bioactive peptides is based on the selection of several transitions per peptide through the optimisation of the MS parameters, the calculation of its concentration range and linear response, and the synthesis of heavy isotope labeled analogues to be used as internal standards. The absolute quantitation using MRM has been applied to bioactive ACE-inhibitory tripeptides extracted from rye malt sourdoughs, showing the highest concentrations those gluten sourdoughs fermented with *Lactobacillus reuteri* TMW 1.106 and added protease (Hu et al., 2011), as well as during the bread-making process (Zhao, Hu, Schieber, & Gänzle, 2013). This methodology has also been used to determine the intact absorption of the ACE-inhibitory dipeptide Val-Tyr into the blood of SHR after administration of 30 mg/kg rat, and detecting a maximal absorption amount of 1.1 ng/mL plasma (Nakashima et al., 2011). Longer peptides such as the bioactive peptides beta-casomorphin 5 and beta-casomorphin 7 were also quantified using a MRM approach in yoghurt by labelling the peptides with deuterium (Nguyen, Solah, Johnson, Charrois, & Buseti, 2014). Despite some studies reflect the increase in data of bioactive peptides quantitation, there is still an important challenge to overcome when analysing complex matrices where the peptides have been generated with no control on the enzymatic action. In this sense, main difficulty is in the optimisation of MRM parameters to perform a sensitive and accurate quantitation without the interferences of other peptides or signal suppression.

7. Key prospects in the quantitation of dry-cured meat bioactive peptides

One of main challenges in current status of peptidomics is to improve the understanding of naturally generated bioactive peptides generation and their interactions in order to

reach more accurate conclusions about their bioavailability and effect in the organism. Despite the discovery and identification of bioactive peptides in food matrices has experienced an important development together with the advance of analytical techniques, data analysis software, and computational prediction, there is still a challenge in the quantitation of bioactive peptides from complex matrices such as dry-cured meat. Conversely, most bioinformatics tools are focused on the analysis of proteins that have been hydrolysed under controlled enzymatic conditions and there is a need for the development of more adequate tools for data processing in peptidomics. In this respect, bioactive peptides databases such as the previously described BIOPEP, PEPBANK, or eBASIS count on a wide report of bioactive peptides identified in plant or animal-based food, very well categorised according to their activity, origin, and IC₅₀ value, but only a few of them have been quantified. Current mass spectrometry analysers such as triple quadrupoles and ion trap (QQQ and Q/Trap) together with new analytical strategies in peptidomics are contributing to advance in the quantitation of bioactive peptides generated during food processing such as fermentation, being the MRM, based on the labelling of the corresponding heavy ions, the current method of choice for their quantitation.

Acknowledgments

The research leading to these results received funding from the European Union 7th Framework Programme (FP7/2007-2013) under Grant Agreement 312090 (BACCHUS). This publication reflects only the author views and the Community is not liable for any use made of the information contained therein. Grant AGL2014-57367-R from MINECO

and FEDER funds and the Juan de la Cierva postdoctoral contract to LM are acknowledged. The proteomic analysis was performed in the proteomics facility of SCSIE University of Valencia that belongs to ProteoRed, PRB2-ISCIII, (IPT13/0001 - ISCIII-SGEFI / FEDER).

References

- Aebersold, R., & Mann, M. (2003). Mass spectrometry-based proteomics. *Nature* 422, 198-207.
- Arihara, K., Nakashima, Y., Mukai, T., Ishikawa, S., & Itoh, M. (2001). Peptide inhibitors for angiotensin I-converting enzyme from enzymatic hydrolysates of porcine skeletal muscle proteins. *Meat Science*, 57 (32), 319-324.
- Bantscheff, M., Schirle, M., Sweetman, G., Rick, J., & Kuster, B. (2007). Quantitative mass spectrometry in proteomics: a critical review. *Analytical and Bioanalytical Chemistry*, 389, 1017-31.
- Boyd, S. E, Garcia de la Banda, M., Pike, R. N., Whisstock, J. C., & Rudy, G. B. (2005). PoPS: A computational tool for modeling and predicting protease specificity. *Journal of Bioinformatics and Computational Biology*, 3 (3), 551-585.
- Capriotti, A. L., Caruso, G., Cavaliere, C., Samperi, R., Ventura, S., Chiozzi, R. Z., & Laganà, A. (2015). Identification of potential bioactive peptides generated by simulated gastrointestinal digestion of soybean seeds and soy milk proteins. *Journal of Food Composition and Analysis*, 44, 205-213.
- Carrasco-Castilla, J., Hernández-Álvarez, A.J., Jiménez-Martínez, C. et al. (2012). Use of proteomics and peptidomics methods in food bioactive peptide science and engineering, *Food Engineering Reviews*, 4: 224-243.
- Castellano, P., Mora, L., Escudero, E., Vignolo, G., Aznar, R., & Toldrá, F. (2016). Antilisterial peptides from Spanish dry-cured hams: purification and identification. *Food Microbiology*, 59, 133-141.
- Chen, Q., Kong, B., Han, Q., Liu, Q., & Xu L. (2006). The role of bacterial fermentation in the hydrolysis and oxidation of sarcoplasmic and myofibrillar proteins in Harbin dry sausages. *Meat Science*, 121, 196-206.

- Christensen, J. E., Dudley, E. G., Pederson, J. A., & Steele, J. L. (1999). Peptidases and amino acid catabolism in lactic acid bacteria. *Antonie van Leeuwenhoek*, 76, 217-246.
- Combet, C., Blanchet, C., Geourjon, C., & Deléage, G. (2000). NPS@: Network Protein Sequence Analysis. *Trends in biochemical sciences* 25 (3), 147-150.
- Corrêa, A. P. F., Daroit, D. J., Fontoura, R., Meira, S. M. M., Segalin, J., & Brandelli, A. (2014). Hydrolysates of sheep cheese whey as a source of bioactive peptides with antioxidant and angiotensin-converting enzyme inhibitory activities. *Peptides*, 6, 48-55.
- Dellafiora, L., Paoletta, S., Dall'Asta, C., Dossena, A., Cozzini, P., & Galaverna, G. (2015). Hybrid in Silico/in Vitro Approach for the Identification of Angiotensin I Converting Enzyme Inhibitory Peptides from Parma Dry-Cured Ham. *Journal of Agricultural and Food Chemistry*, 63(28), 6366-75
- Di Luccia, A., Picariello, G., Cacace, G., Scaloni, A., Faccia, M., Liuzzi, V., Alviti, G., & Musso, S. S. (2005). Proteomic analysis of water soluble and myofibrillar protein changes occurring in dry-cured hams. *Meat Science*, 69 (3), 479-491.
- Escudero, E., Sentandreu, M. A., Arihara, K., & Toldrá, F. (2010). Angiotensin I-converting enzyme inhibitory peptides generated from in vitro gastrointestinal digestion of pork meat. *Journal of Agricultural and Food Chemistry*, 58 (5), 2895-2901.
- Escudero, E., Toldrá, F., Sentandreu, M. A., Nishimura, H., & Arihara, K. (2012). Antihypertensive activity of peptides identified in the in vitro gastrointestinal digest of pork meat. *Meat Science*, 91 (3), 382-384.
- Escudero, E., Aristoy, M. C., Nishimura, H., Arihara, K., & Toldrá, F. (2012). Antihypertensive effect and antioxidant activity of peptide fractions extracted from Spanish dry-cured ham. *Meat Science*, 91 (3), 306-311.
- Escudero, E., Mora, L., Fraser, P. D., Aristoy, M. C., Arihara, K., & Toldrá, F. (2013). Purification and Identification of antihypertensive peptides in Spanish dry-cured ham. *Journal of Proteomics*, 78, 499-507.
- Escudero, E., Mora, L., Fraser, P. D., Aristoy, M. C., & Toldrá, F. (2013). Identification of novel antioxidant peptides generated in Spanish dry-cured ham. *Food Chemistry*, 138, 1282-1288.
- Escudero, E., Mora, L., & Toldrá, F. (2014). Stability of ACE inhibitory ham peptides against heat treatment and in vitro digestion. *Food Chemistry*, 161, 305-311.

534 Fernández, M., Benito, M. H., Martín, A., Casquete, R., Córdoba, J. J., & Córdoba, M.
535 G. (2016). Influence of starter culture and a protease on the generation of ACE-
536 inhibitory and antioxidant bioactive nitrogen compounds in Iberian dry-fermented
537 sausage 'salchichón'. *Heliyon*, 31, 2 (3).

538 Fosgerau, K. & Hoffmann, T. (2015). Peptide therapeutics: current status and future
539 directions, *Drug Discovery Today*, 20, 1, 122-128.

540 Gallego, M., Mora, L., Fraser, P. D., Aristoy, M. C., & Toldrá, F. (2014). Degradation of
541 LIM domain-binding protein 3 during Spanish dry-cured ham processing. *Food*
542 *Chemistry*, 149, 121-128.

543 Gallego, M., Mora, L., Aristoy, M. C., & Toldrá, F. (2015). Titin-derived peptides as
544 processing time markers in dry-cured ham. *Food Chemistry*, 167, 326-339.

545 Gallego, M., Grootaert, C., Mora, L., Aristoy, MC., Van Camp, J. & Toldrá, F. (2016).
546 Transepithelial transport of dry-cured ham peptides with ACE inhibitory activity
547 through a Caco-2 cell monolayer. *Journal of Functional Foods*, 21, 388-395

548 Gasteiger, E., Hoogland, C., Gattiker, A., Duvaud, S., Wilkins, M. R., Appel, R. D., &
549 Bairoch, A. (2005). Protein identification and analysis tools on the ExPASy Server.
550 In John M. Walker (Ed). *The Proteomics Protocols Handbook* (pp.571-607).
551 Humana Press.

552 Gu, Y., Majumder, K., & Wu, J. (2011). QSAR-aided in silico approach in evaluation of
553 food proteins as precursors of ACE inhibitory peptides. *Food Research*
554 *International*, 44, 2465-2474.

555 Hu, Y., Stromeck, A., Loponen, J., Lopes-Lutz, D., Schieber, A., & Gänzle, M. G. (2011).
556 LC-MS/MS quantification of bioactive angiotensin I-converting enzyme inhibitory
557 peptides in rye malt sourdoughs. *Journal of Agricultural and Food Chemistry*, 59
558 (22):11983-11989.

559 Hughes, M. C., Kerry, J. P., Arendt, E. K., Kenneally, P. M., McSweeney, P. L. H., &
560 O'Neill, E. E. (2002). Characterization of proteolysis during the ripening of semi-
561 dry fermented sausages. *Meat Science*, 62, 205-216.

562 Kaur, H., Garg, A., & Raghava, G. P. (2007) PEPstr: a de novo method for tertiary
563 structure prediction of small bioactive peptides. *Protein and Peptide Letters*, 14,
564 626-631.

565 Katayama, K., Fuchu, H., Sakata, A., Kawahara, S., Yamauchi, K., Kawamura, Y., &
566 Muguruma, M. (2003). Angiotensin I-converting enzyme inhibitory activities of

567 porcine skeletal muscle proteins following enzyme digestion. *Asian-Australasian*
568 *Journal of Animal Sciences*, 16 (3), 417-424.

569 Lewis, S., Csordas, A., Killcoyne, S., Hermjakob, H., Hoopmann, M. R., Moritz, R. L.,
570 Deutsch, E. W., & Boyle, J. (2012). Hydra: a scalable proteomic search engine
571 which utilizes the Hadoop distributed computing framework. *BMC Bioinformatics*,
572 13, 324.

573 López, C. M., Bru, E., Vignolo, G., & Fadda, S. G. (2015). Identification of small peptides
574 arising from hydrolysis of meat proteins in dry fermented sausages. *Meat Science*,
575 104, 20-29.

576 Marseglia, A., Sforza, S., Faccini, A., Bencivenni, M., Palla, G., & Caligiani, A. (2014).
577 Extraction, identification and semi-quantification of oligopeptides in cocoa beans.
578 *Food Research International*, 63, 382-389.

579 Marušić, N., Aristoy, M. C., & Toldrá, F. (2013). Nutritional pork meat compounds as
580 affected by ham dry-curing, *Meat Science*, 93 (1), 53-60.

581 Minkiewicz, P., Dziuba, J., Iwaniak, A., Dziuba, M., & Darewicz, M. (2008) BIOPEP
582 and other programs processing bioactive peptide sequences. *Journal of AOAC*
583 *International*, 91, 965-980.

584 Mohanty, D.P., Mohapatra, S., Misra, S., & Sahu, P. S. (2016). Milk derived bioactive
585 peptides and their impact on human health – A review. *Saudi Journal of Biological*
586 *Sciences*, 23 (5), 577-583.

587 Mooney, C., Haslam, N. J., Pollastri, G., & Shields, D. C. (2012) Towards the improved
588 discovery and design of functional peptides: Common features of diverse classes
589 permit generalized prediction of bioactivity. *PLoS ONE*, 7 (10): e45012.

590 Mora, L., Sentandreu, M. A., Fraser, P. D., Toldrá, F., & Bramley, P. M. (2009).
591 Oligopeptides arising the degradation of creatine kinase in Spanish dry-cured ham.
592 *Journal of Agricultural and Food Chemistry*, 57, 8982-8988.

593 Mora, L., Sentandreu, M. A., & Toldrá, F. (2010). Identification of small troponin T
594 peptides generated in dry-cured ham. *Food Chemistry*, 123, 691-697.

595 Mora, L., Sentandreu, M. A., & Toldrá, F. (2011). Intense degradation of myosin light
596 chain isoforms in Spanish dry-cured ham. *Journal of Agricultural and Food*
597 *Chemistry*, 59, 3884-3892.

598 Mora, L., Valero, M. L., Del Pino, M. M. S., Sentandreu, M. A., & Toldrá, F. (2011).
599 Small peptides released from muscle glycolytic enzymes during dry-cured ham
600 processing. *Journal of Proteomics*, 74, 442-450.

601 Mora, L., & Toldrá, F. (2012) Proteomic identification of small (<2000 Da) myoglobin
 602 peptides generated in dry-cured ham. *Food Technology and Biotechnology*, 50 (3)
 603 343-349.

604 Mora, L., Escudero, E., Fraser, P. D., Aristoy, M. C., & Toldrá, F. (2014). Proteomic
 605 identification of antioxidant peptides from 400 to 2500 Da generated in Spanish
 606 dry-cured ham contained in a size-exclusion chromatography fraction. *Food*
 607 *Research International*, 56, 68-76.

608 Mora, L., Escudero, E., Aristoy, M. C., & Toldrá, F. (2015). A peptidomic approach to
 609 study the contribution of added casein proteins to the peptides profile in Spanish
 610 dry-fermented sausages. *International Journal of Food Microbiology*. 212, 41-48.

611 Mora, L., Escudero, E., Arihara, K., & Toldrá, F. (2015). Antihypertensive effect of
 612 peptides naturally generated during Iberian dry-cured ham processing. *Food*
 613 *Research International*, 78, 71-78.

614 Mora, L., Gallego, M., Aristoy, M. C., Fraser, P. D., & Toldrá, F. (2015). Peptides
 615 naturally generated from ubiquitin-60S ribosomal protein as potential biomarkers
 616 of dry-cured ham processing time. *Food Control*, 48, 102-107.

617 Mora, L., Gallego, M., Escudero, E., Reig, M., Aristoy, M. C., & Toldrá, F. (2015). Small
 618 peptides hydrolysis in dry-cured meats. *International Journal of Food*
 619 *Microbiology*, 212, 9-15.

620 Mora, L., Escudero, E., & Toldrá, F. (2016). Characterization of the peptide profile in
 621 Spanish Teruel, Italian Parma and Belgian dry-cured hams and its potential
 622 bioactivity. *Food Research International*, 89, 638-646.

623 Mora, L., Calvo, L., Escudero, E. & Toldrá, F. (2016). Differences in pig genotypes
 624 influence the generation of peptides in dry-cured ham processing. *Food Research*
 625 *International*, 86, 74-82.

626 Nakashima, E. M., Kudo, A., Iwaihara, Y., Tanaka, M., Matsumoto, K., & Matsui, T.
 627 (2011). Application of ¹³C stable isotope labeling liquid chromatography-multiple
 628 reaction monitoring-tandem mass spectrometry method for determining intact
 629 absorption of bioactive dipeptides in rats. *Analytical Biochemistry*, 414(1), 109-
 630 116.

631 Nguyen, D. D., Solah, V. A., Johnson, S. K., Charrois, J. W., & Busetti, F. (2014). Isotope
 632 dilution liquid chromatography-tandem mass spectrometry for simultaneous
 633 identification and quantification of beta-casomorphin 5 and beta-casomorphin 7 in
 634 yoghurt. *Food Chemistry*, 146, 345-352.

635 Panchaud, A., Affolter, M., & Kussmann, M. (2012). Mass spectrometry for nutritional
636 peptidomics: How to analyze food bioactives and their health effects. *Journal of*
637 *Proteomics*, 27, 75(12), 3546-3559.

638 Pearson, A. M., Wolzak, A. M., & Gray, J. I. (1983) Possible role of muscle protein in
639 flavor and tenderness of meat. *Journal of Food Biochemistry*, 7, 189-210.

640 Pepe, G., Sommella, E., Ventre, G., Scala, M. C., Adesso, S., Ostacolo, C., Marzocco, S.,
641 Novellino, E., & Campiglia, P. (2016). Antioxidant peptides released from
642 gastrointestinal digestion of “Stracchino” soft cheese: Characterization, in vitro
643 intestinal protection and bioavailability. *Journal of Functional Foods*, 26, 494-505.

644 Picotti, P., & Aebersold, R. (2012). Selected reaction monitoring-based proteomics:
645 workflows, potential, pitfalls and future directions. *Nature Methods*, 30, 9(6), 555-
646 566.

647 Pihlanto-Leppälä, A. (2001). Bioactive peptides derived from bovine whey proteins:
648 Opioid and ACE-inhibitory peptides. *Trends in Food Science and Technology*, 1,
649 347-356.

650 Pisanu, S., Pagnozzi, D., Pes, M., Pirisi, A., Roggio, T., Uzzau, S., & Addis, M. F. (2015).
651 Differences in the peptide profile of raw and pasteurised ovine milk cheese and
652 implications for its bioactive potential. *International Dairy Journal*, 42, 26-33.

653 Rajapakse, N., Mendis, E., Jung, W. K., Je, J. Y., & Kim, S. K. (2005). Purification of
654 radical scavenging peptide from fermented mussel sauce and its antioxidant
655 properties. *Food Research International*, 38, 175-182.

656 Rauh M. (2012). LC-MS/MS for protein and peptide quantification in clinical chemistry.
657 *Journal of Chromatography B Analytical Technology Biomedical Life*
658 *Sciences*. 883-884, 59-67.

659 Ryder, K., Bekhit, A. E. D., McConnell, M., & Carne, A. (2016). Towards generation of
660 bioactive peptides from meat industry waste proteins: Generation of peptides using
661 commercial microbial proteases, *Food Chemistry*, 208, 42-50.

662 Sentandreu, M. A., Armenteros, M., Calvete, J. J., Ouali, A., Aristoy, M. C., & Toldrá, F.
663 (2007). Proteomic identification of actin-derived oligopeptides in dry-cured ham.
664 *Journal of Agricultural and Food Chemistry*, 55 (9), 3613-3619.

665 Sforza, S., Ferroni, L., Galaverna, G., Dossena, A., & Marchelli, R. (2003). Extraction,
666 semi-quantification, and fast on-line identification of oligopeptides in Grana
667 Padano cheese by HPLC–MS. *Journal of Agricultural and Food Chemistry*, 51 (8),
668 2130-2135

669 Shtatland, T., Guettler, D., Kossodo, M., Pivovarov, M., & Weissleder, R. (2007)
670 PepBank- A database of peptides based on sequence text mining and public peptide
671 data sources. *BMC Bioinformatics*, 1, 8, 280.

672 Thévenet, P., Shen, Y. M., Maupetit, J., Guyon, F., Derreumaux, P., & Tufféry, P. (2012).
673 PEPFOLD: an updated de novo structure prediction server for both linear and
674 disulfide bonded cyclic peptides. *Nucleic Acids Research*, 40, W288-W293.

675 Toldrá, F., & Flores, M. (1998). The role of muscle proteases and lipases in flavor
676 development during the processing of dry-cured ham. *Critical Reviews in Food*
677 *Science and Nutrition*, 38, 331-352.

678 Toldrá, F. (2002). *Dry-cured meat products*; Ames, IO: Wiley-Blackwell.

679 Toldrá, F. (2006). The role of muscle enzymes in dry-cured meat products with different
680 drying conditions. *Trends in Food Science and Technology*, 17, 164-168.

681 Toldrá, F., & Flores, M. (2011). Microbial enzymatic activities for improved fermented
682 meats (review). *Trends in Food Science and Technology*, 22, 81-90.

683 Vijayakumar, V., Guerrero, A. N., Davey, N., Lebrilla, C. B., Shields, D. C., & Khaldi,
684 N. (2012) EnzymePredictor: A tool for predicting and visualizing enzymatic
685 cleavages of digested proteins. *Journal of Proteome Research*, 11 (12), 6056-6065.

686 Wilkins, M. R., Lindskog, I., Gasteiger, E., Bairoch, A., Sanchez, J. C., Hochstrasser, D.
687 F., & Appel, R. D. (1997). Detailed peptide characterisation using PEPTIDEMASS
688 - a World-Wide Web accessible tool. *Electrophoresis*, 18 (3-4), 403-408.

689 Wu, J., Aluko, R. E., & Nakai, S. (2006a). Structural requirements of Angiotensin I
690 converting enzyme inhibitory peptides: quantitative structure–activity relationship
691 study of di- and tripeptides. *Journal of Agricultural and Food Chemistry*, 54 (3),
692 732-738.

693 Wu, J., Aluko, R. E., & Nakai, S. (2006b). Structural requirements of angiotensin I-
694 converting enzyme inhibitory peptides: Quantitative structure–activity relationship
695 modeling of peptides containing 4–10 amino acid residues. *QSAR & Combinatorial*
696 *Science*, 25 (10), 873-880.

697 Xing, L. J., Hu, Y. Y., Hu, H. Y., Ge, Q. F., Zhou, G. H., Zhang, W. G. (2016) Purification
698 and identification of antioxidative peptides from dry-cured Xuanwei ham. *Food*
699 *Chemistry*, 194, 951-958.

700 Yadav, A. K., Kumar, D., & Dash, D. (2011). MassWiz: A novel scoring algorithm with
701 target-decoy based analysis pipeline for tandem mass spectrometry. *Journal of*
702 *Proteome Research*, 10 (5), 2154-2160.

- Zamyatnin, A. A., Borchikov, A. S., Vladimirov, M. G., & Voronina, O. L. (2006). The EROP-Moscow oligopeptide database. *Nucleic Acids Research*, 34, D261-D266.
- Zapata, I., & Wick, M. (2012). Electrophoresis-Based Proteomic Meat Animal Research. *Food Technology and Biotechnology*, 50 (3), 261-269.
- Zhao, C. J., Hu, Y., Schieber, A., & Gänzle, M. (2013). Fate of ACE-inhibitory peptides during the bread-making process: Quantification of peptides in sourdough, bread crumb, steamed bread and soda crackers. *Journal of Cereal Science*, 57 (3), 514-519.
- Zhu, C. Z., Zhang, W. G., Zhou, G. H. Xu, X. L., Kang, Z. L. & Yin, Y. (2013). Isolation and Identification of Antioxidant Peptides from Jinhua Ham. *J. Agric. Food Chemistry*, 61, 1265–1271.
- Zhu, C. Z., Zhang, W. G., Zhou, G. H., & Xu, X. L. (2016). Identification of antioxidant peptides of Jinhua ham generated in the products and through the simulated gastrointestinal digestion system. *Journal of the Science of Food and Agriculture*, 96, 99-108.

LEGENDS FOR THE FIGURES

Figure 1. Scheme of main sources of food-derived peptides that could exert biological activity when liberated from the protein of origin.

Figure 2. Proteomics vs peptidomics. Main differences are in the generation and identification of peptides. Different approaches are needed when objectives are the identification of protein biomarkers and the identification of protein-derived bioactive peptides.

Figure 3. Activity profile of main bioactive peptides included in the free access BIOPEP database.

Figure 4. MALDI-ToF spectra of the peptide extract of Spanish dry-fermented sausages. A) Values from 200 to 900 m/z [M-H⁺] and B) values from 850 to 3500 m/z [M-H⁺]. Reproduced from Mora, Escudero, Aristoy and Toldrá (2015). *A peptidomic approach to*

study the contribution of added casein proteins to the peptides profile in Spanish dry-fermented sausages. *International Journal of Food Microbiology*, 212, 41-48 with permission from Elsevier.

Figure 5. MALDI ToF analysis of water soluble extract of Iberian dry-cured ham. A) from 150 to 800 m/z $[M-H^+]$ and B) from 800 to 1800 m/z $[M-H^+]$. Reproduced from Mora, Escudero, Arihara, and Toldrá (2015). *Antihypertensive effect of peptides naturally generated during Iberian dry-cured ham processing. Food Research International*, 78, 71–78 with permission from Elsevier.

Table 1. Sequences of bioactive peptides identified from dry-cured meat products.

Sequence	Activity	IC ₅₀ (μ M)	MIC (mM)	Protein of origin	Dry-cured meat product	References
PAPPK	ACE-inhibitory	199.58	-	Myosin light chain	Spanish dry-cured ham	Escudero et al. (2014)
KAAAAP	"	19.79	-	Myosin light chain	"	"
AMNPP	"	304.50	-	Myosin	"	"
IKLPP	"	193.90	-	Myosin	"	"
AAPLAP	"	14.38	-	Myosin	"	"
KPVAAP	"	12.37	-	Myosin	"	"
VPPAK	"	>1000	-	Titin	"	"
KPGRP	"	67.08	-	Titin	"	"
PSNPP	"	192.27	-	Titin	"	"
IAGRP	"	25.94	-	Titin	"	"
EAPPK	"	>1000	-	Titin	"	"
PAAPPK	"	>1000	-	Titin	"	"
KVLPG	"	265.44	-	Phosphoglycerate kinase	"	"
TGLKP	"	51.57	-	Aspartate aminotransferase	"	"
KAAAATP	"	25.64	-	PR domain zinc finger protein	"	"
GNGGA	"	>1000	-	Carbamoyl-phosphate synthase	"	Escudero et al. (2013)
DVITGA	"	900	-	Myosin light chain	"	"
KDQGSYEDF	"	>1000	-	Ca ²⁺ binding protein	"	"
GVDPNGHPF	"	>1000	-	Creatine kinase	"	"
LNSLT	"	>1000	-	Creatine kinase	"	"
KAEEY PDL	"	>1000	-	Creatine kinase	"	"
EEY PDL	"	>1000	-	Creatine kinase	"	"
ASGPINFT	"	975	-	Myosin regulatory light chain	"	"
LGL	"	145	-	-	Parma dry-cured ham	Dellafiora et al. (2015)
ALM	"	>1100	-	-	"	"
SFVTT	"	395	-	-	"	"
GVVPL	"	956	-	-	"	"
NSIM	"	>1100	-	-	"	"
AAATP	Antihypertensive	100	-	Allantoicase	Spanish dry-cured ham	Escudero et al. (2013)
SNAAC	Antioxidant	75.2	-	Myosin heavy chain	"	Mora et al. (2013)
AEEY PDL	"	2 mg/mL	-	Creatine kinase	"	"
GKFNV	"	n.d.	-	<i>De novo</i> sequence	Jinhua dry-cured ham	Zhu et al. (2013)
LPGGGHGDL	"	n.d.	-	<i>De novo</i> sequence	"	Zhu et al. (2016)
LPGGGT	"	~1 mg/mL	-	<i>De novo</i> sequence	"	"
HA	"	~1 mg/mL	-	<i>De novo</i> sequence	"	"
KEER	"	n.d.	-	<i>De novo</i> sequence	"	"
SAGNPN	"	1.5 mg/mL	-	Zinc finger-X protein	Spanish dry-cured ham	Escudero et al. (2013)
GLAGA	"	1 mg/mL	-	Collagen	"	"
DLEE	"	n.d.	-	<i>De novo</i> sequence	Xuanwei ham	Xing et al. (2016)
RHGYM	Antilisterial	-	6.25	Dynein heavy chain	Spanish dry-cured ham	Castellano et al. (2016)

Food peptides generation

```
graph TD; A[Food peptides generation] --> B[In vivo gastrointestinal digestion.]; A --> C[Food processing. (fermentation, curing,...)]; A --> D[Controlled in vitro proteolysis.]; B --> E[Gastrointestinal enzymes.]; C --> F[Endogenous enzymes. Microbial enzymes.]; D --> G[Proteolytic enzymes.]
```

In vivo gastrointestinal digestion.

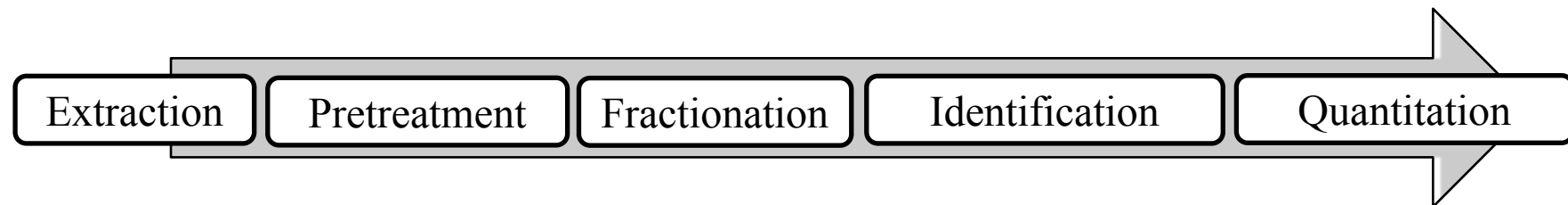
Gastrointestinal enzymes.

Food processing.
(fermentation, curing,...)

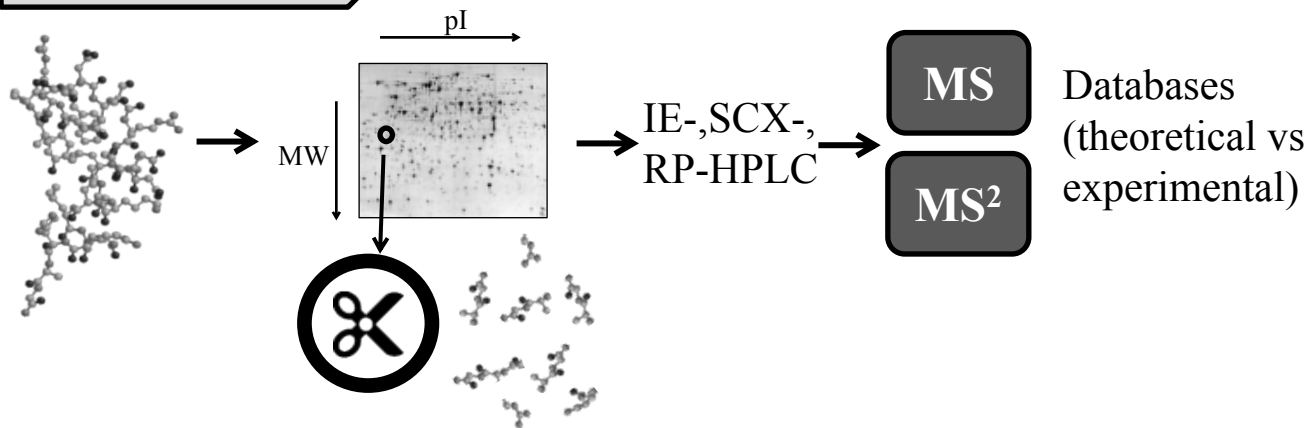
Endogenous enzymes.
Microbial enzymes.

Controlled *in vitro* proteolysis.

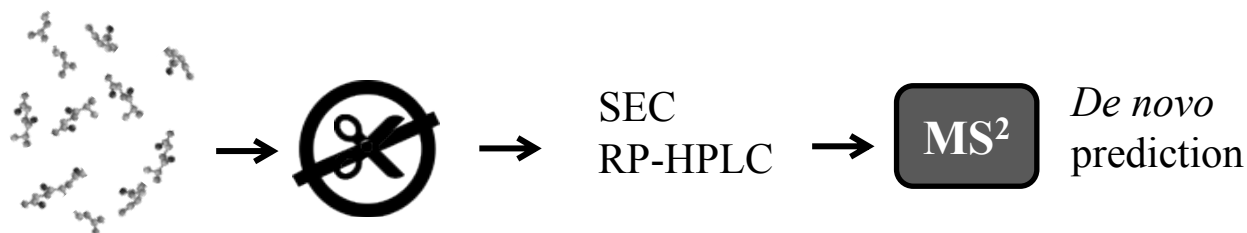
Proteolytic enzymes.



PROTEOMICS



PEPTIDOMICS



Absolute or relative using label-free and labelled approaches.

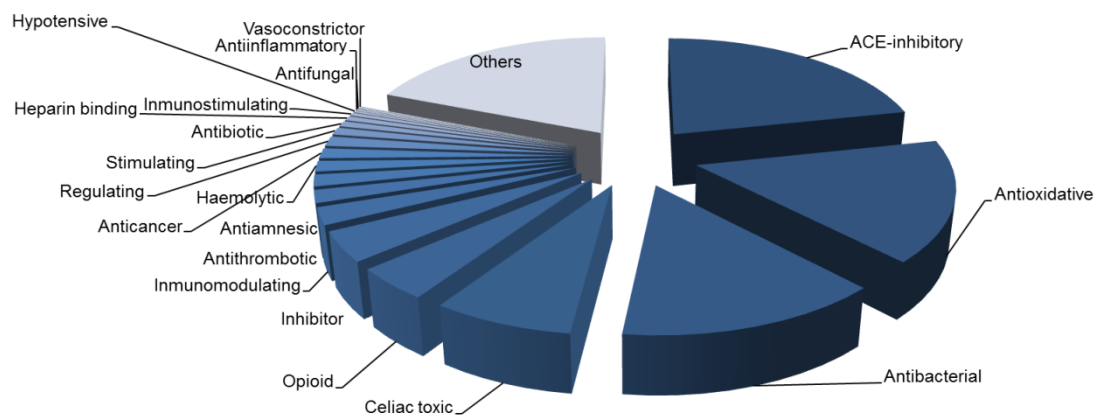
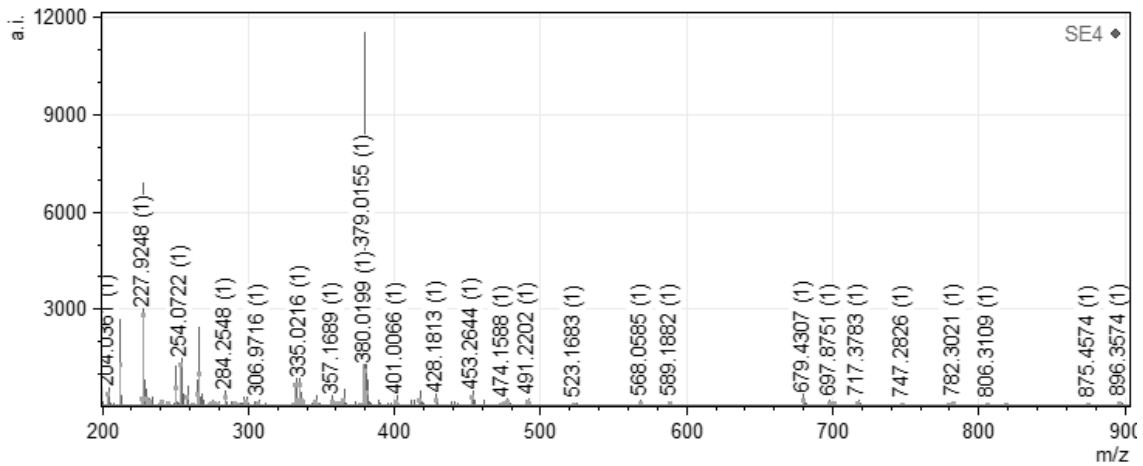


Figure 3. Activity profile of main bioactive peptides included in the free access BIOPEP database.

A)



B)

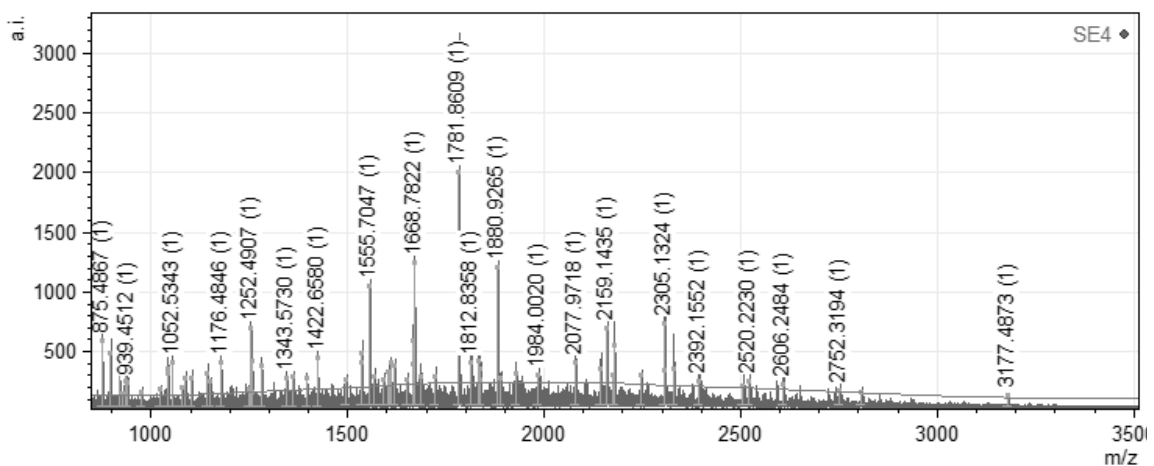
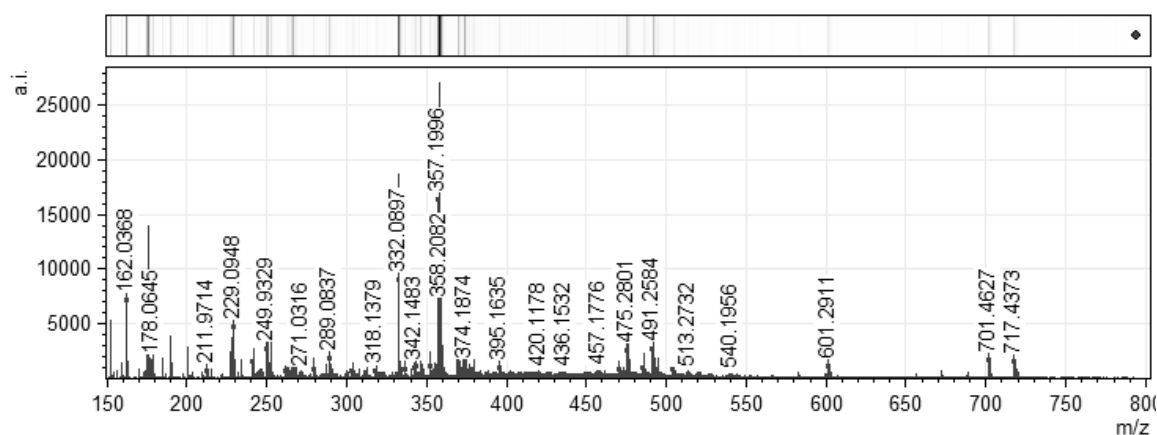


Figure 4. MALDI-ToF spectra of the peptide extract of Spanish dry-fermented sausages. A) Values from 200 to 900 m/z $[M-H]^+$ and B) values from 850 to 3500 m/z $[M-H]^+$. Reproduced from *Mora, Escudero, Aristoy and Toldrá (2015)*. A peptidomic approach to study the contribution of added casein proteins to the peptides profile in Spanish dry-fermented sausages. *International Journal of Food Microbiology*, 212, 41-48 with permission from Elsevier.

A)



B)

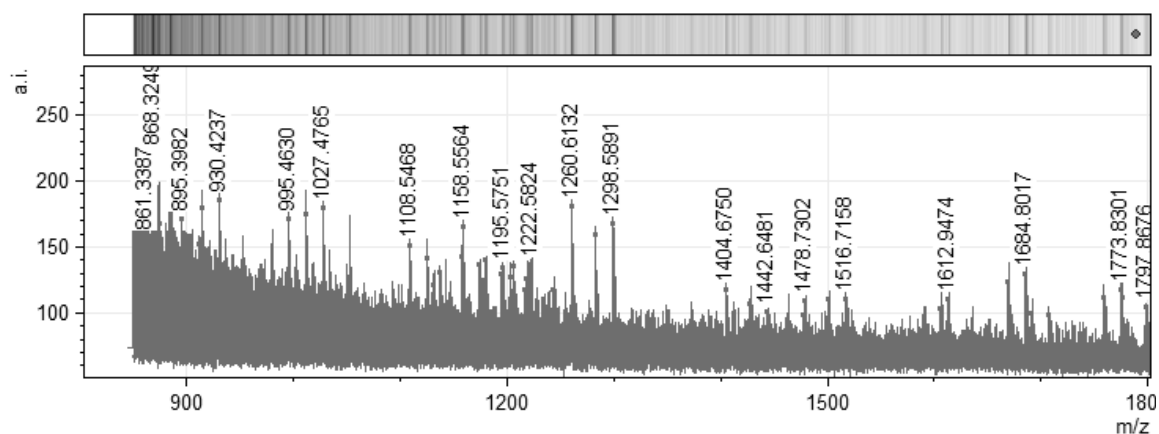


Figure 5. MALDI ToF analysis of water soluble extract of Iberian dry-cured ham. A) from 150 to 800 m/z $[M-H]^+$ and B) from 800 to 1800 m/z $[M-H]^+$. Reproduced from Mora, Escudero, Arihara, and Toldrá (2015). *Antihypertensive effect of peptides naturally generated during Iberian dry-cured ham processing. Food Research International*, 78, 71–78 with permission from Elsevier.