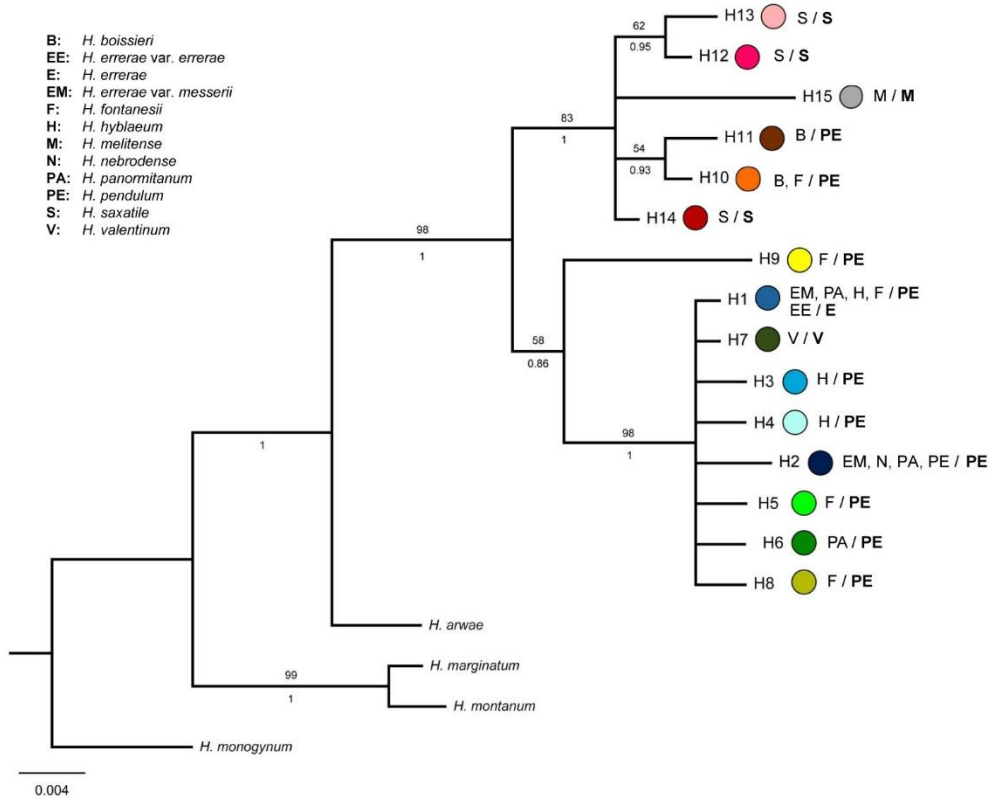


1 **Supplementary Material**
 2 **Electronic Supplement**

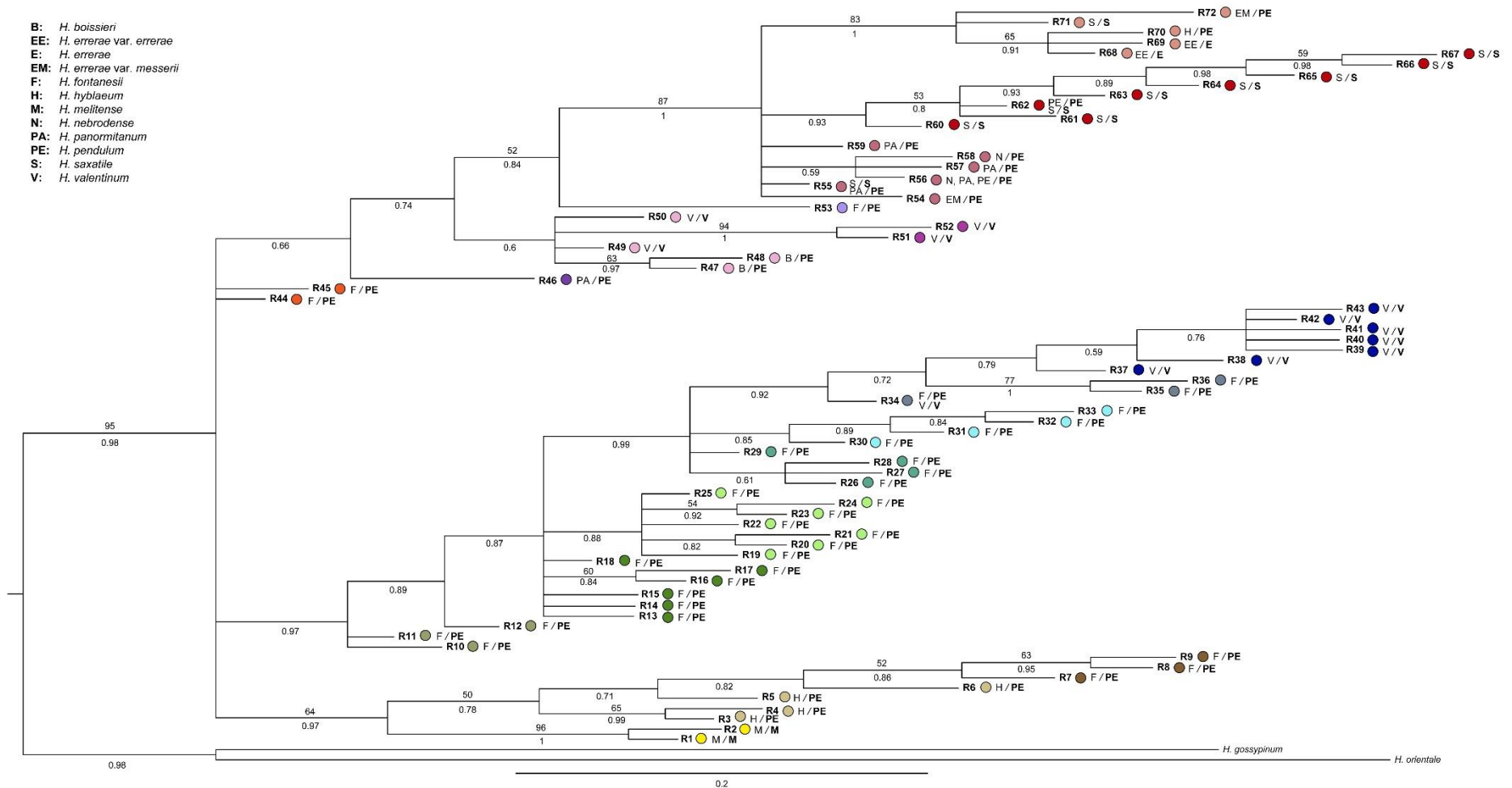
3
 4 **Figures**
 5



6
 7
 8
 9
 10
 11
 12
 13
 14
 15
 16
 17
 18
 19
 20
 21
 22
 23
 24
 25
 26
 27
 28
 29
 30
 31
 32
 33
 34
 35
 36

Fig. S1. Phylogram obtained from the Bayesian analysis of the 15 haplotypes detected in the *Helichrysum pendulum* complex and four additional *Helichrysum* species coded as outgroup taxa (dataset 1). Bootstrap values from maximum parsimony analysis are shown above branches and bayesian posterior probabilities are shown below branches. Color codes are the same as in Figure 1. Previous taxonomic treatment and final taxonomic treatment (in bold) are given.

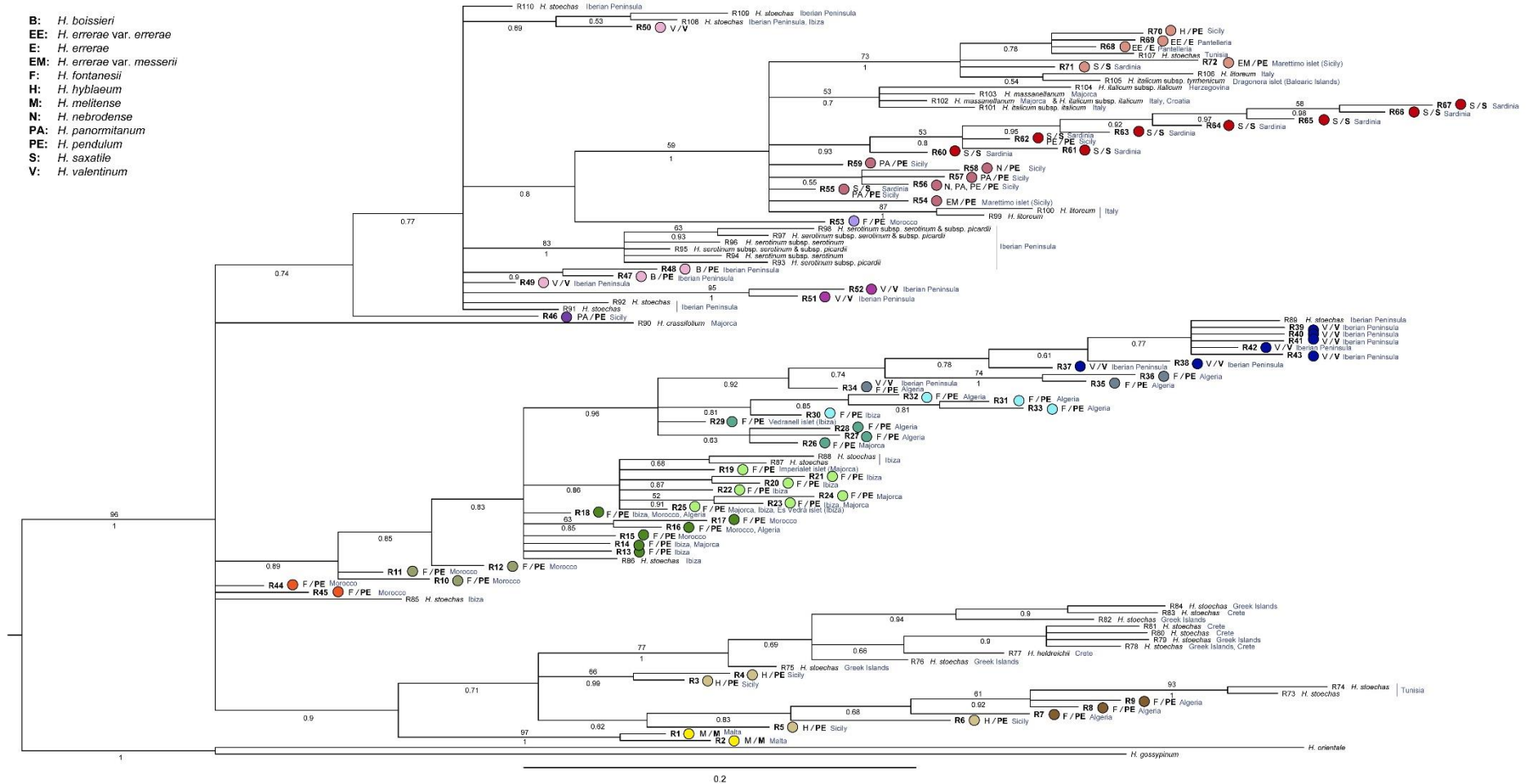
37



38
39
40
41
42
43

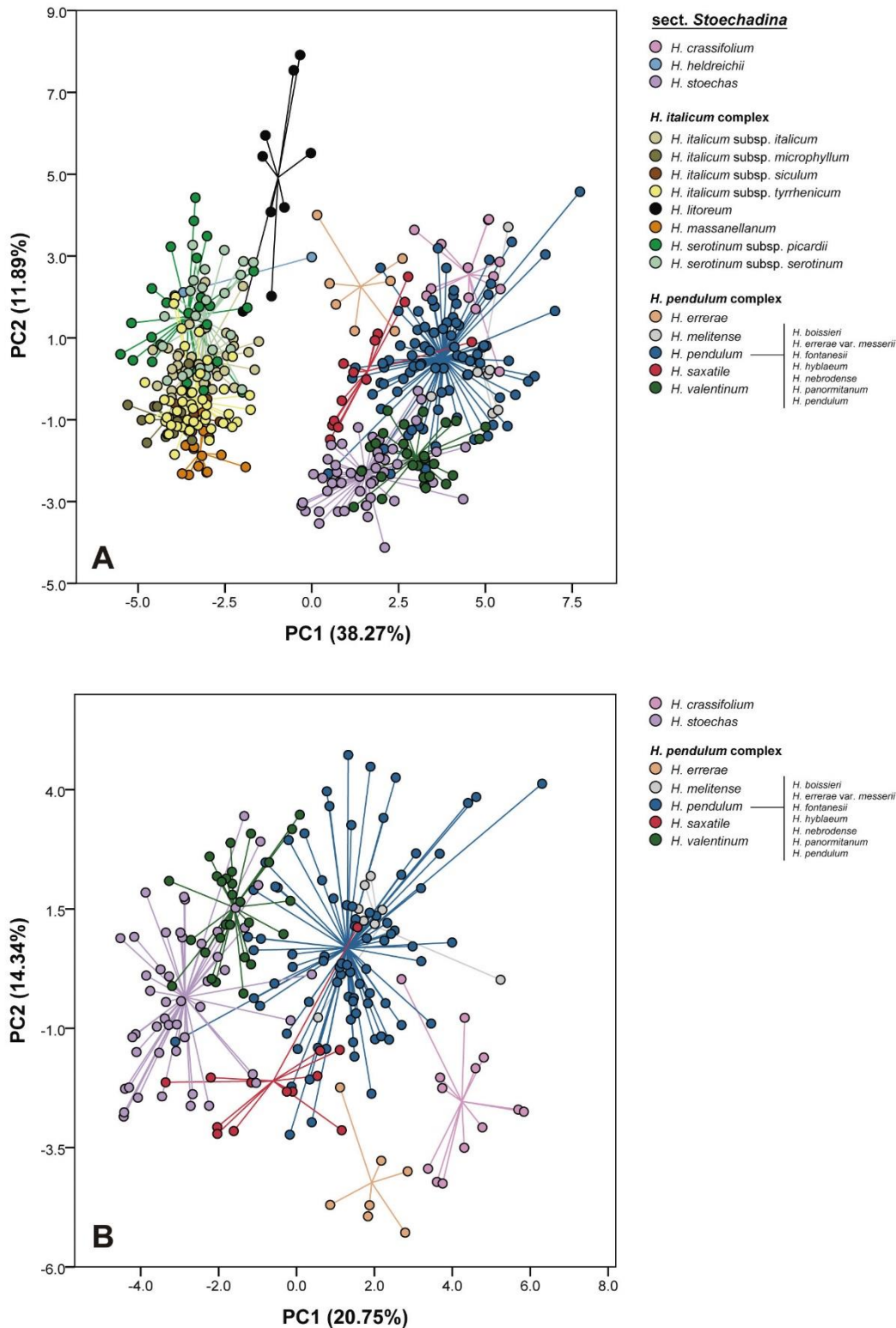
Fig. S2. Phylogram obtained from the Bayesian analysis of the 72 ribotypes detected in the *Helichrysum pendulum* complex and two additional *Helichrysum* species coded as outgroup taxa (dataset 2). Bootstrap values from maximum parsimony analysis are shown above branches and bayesian posterior probabilities are shown below branches. Colour codes are the same as in Figure 2. Previous taxonomic treatment and final taxonomic treatment (in bold) are given.

44



45
46
47
48
49
50

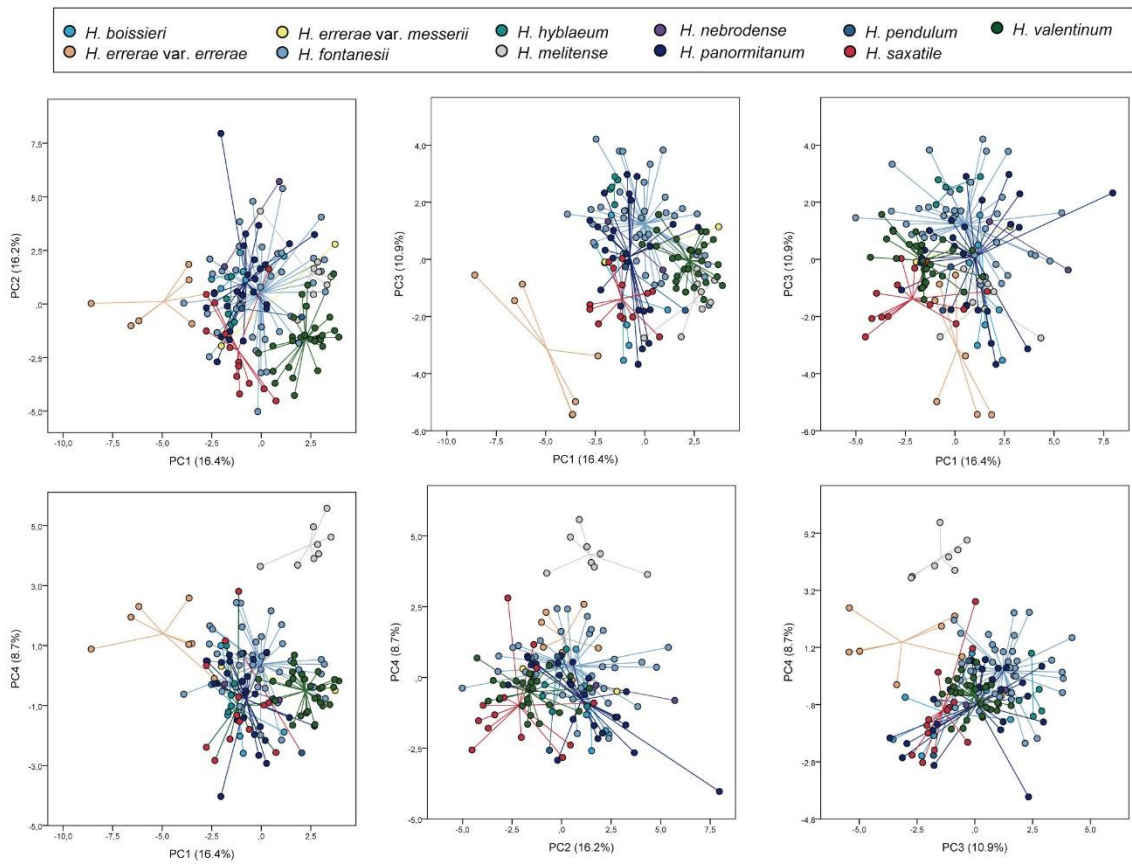
Fig. S3. Phylogram obtained from the Bayesian analysis of the 72 ribotypes detected in the *Helichrysum pendulum* complex and the 38 ribotypes detected in rest of species of sect. *Stoechadina* (dataset 4), with their locality shown in blue. Bootstrap values from maximum parsimony analysis are shown above branches and Bayesian posterior probabilities are shown below branches. Colour codes are the same as in Figure 2. Previous taxonomic treatment and final taxonomic treatment (in bold) of the *H. pendulum* complex are given.



51
52
53
54
55
56
57
58
59
60
61
62

Fig. S4. A, Scatterplot of the first two axes from principal component analysis (PCA1) based on 30 morphological characters studied for a total of 380 individuals from sect. *Stoechadina*: 13 individuals of *H. crassifolium*, 2 individuals of *H. heldreichii*, 48 individuals of *H. stoechas*, 38 individuals of *H. italicum* subsp. *italicum*, 14 individuals of *H. italicum* subsp. *microphyllum*, 6 individuals of *H. italicum* subsp. *siculum*, 47 individuals of *H. italicum* subsp. *tyrrhenicum*, 9 individuals of *H. litoreum*, 15 individuals of *H. massanellum*, 26 individuals of *H. serotinum* subsp. *serotinum*, 26 individuals of *H. serotinum* subsp. *picardii*, 7 individuals of *H. errerae*, 8 individuals of *H. melitense*, 80 individuals of *H. pendulum*, 13 individuals of *H. saxatile* and 28 individuals of *H. valentinum*. Six taxa previously recognized in previous treatments are labelled as *H. pendulum* in this figure but listed in the legend. **B,** Scatterplot of the first two axes from principal component analysis (PCA2) based on 30 morphological characters studied for a total of 197 individuals: the same as in A but excluding *H. heldreichii* and all members of the *H. italicum* complex.

63



64
65
66
67
68
69
70

Fig. S5. Scatterplots combining the first four axes from principal component analysis (PCA3) based on 31 morphological characters for the 136 individuals studied: 7 individuals of *H. boissieri*, 7 individuals of *H. errerae* var. *errerae*, 2 individuals of *H. errerae* var. *messerii*, 38 individuals of *H. fontanesii*, 5 individuals of *H. hyblaeum*, 8 individuals of *H. melitense*, 2 individuals from *H. nebrodense*, 24 individuals of *H. panormitanum*, 2 individuals of *H. pendulum*, 13 individuals of *H. saxatile* and 28 individuals of *H. valentinum*. Taxa are labelled following most analytical treatments.

71
72
73
74
75
76

Tables

Table S1. A. Location and abbreviation codes of the 44 *H. pendulum* complex populations included in this research. Geographical location of each population is shown in Figs. 1 and 2. Number of specimens included for each DNA marker is also shown. Number of individuals carrying a given haplotype and ribotype is shown in brackets. **B.** Location and abbreviation codes of the specimens belonging to other species included in this research. Coordinates were not available for some of the collections, in these cases approximate coordinates are indicated in []. Number of specimens included for each DNA marker is indicated. For sect. *Stoechadina* the number of individuals carrying a given ribotype is shown in brackets.

Species	Country	Locality and voucher	Coordinates	Population code used in the figures	Number of specimens for <i>rpl32-trnL</i> spacer	Number of specimens for ETS	<i>rpl32-trnL</i> spacer haplotype	ETS ribotype
A. HELICHRYSUM PENDULUM COMPLEX								
<i>Helichrysum boissieri</i> Nyman / <i>Helichrysum pendulum</i> (C. Presl) C. Presl	Gibraltar	Rock of Gibraltar, <i>Galbany 2191 & Arrabal</i> (BC 950783)	36° 08' 47.65" N 5° 20' 43.92" W	B1	5	5	H10 (3), H11 (2)	R47 (1), R48 (5)
<i>Helichrysum errerae</i> Tineo var. <i>errerae</i> / <i>Helichrysum errerae</i> Tineo	Italy	Sicily, Pantelleria island, close to Pantelleria village, <i>Galbany 2324</i> (BC 950782)	36° 49' 29.0" N 11° 55' 54.0" E	EE1	5	5	H1 (5)	R68 (5)
		Sicily, Pantelleria island, close to Cala 5 Denti, <i>Galbany 2327</i> (BC 950781)	36° 49' 11.8" N 11° 59' 58.5" E	EE2	6	6	H1 (6)	R68 (6)
		Sicily, Pantelleria island, between Scauri and Balata d. Turchi, <i>Galbany 2325</i> (BC 950780)	36° 45' 09.7" N 11° 58' 47.9" E	EE3	6	6	H1 (6)	R68 (5), R69 (1)
<i>Helichrysum errerae</i> Tineo var. <i>messerii</i> (Pignatti) Raimondo / <i>Helichrysum pendulum</i> (C. Presl) C. Presl	Italy	Sicily, Marettimo islet, by the way to Punta Troia, <i>Galbany 2328 & Garcia-Jacas</i> (BC 950779)	37° 58' 24.4" N 12° 4' 05.0" E	EM1	5	2	H1 (1), H2 (4)	R54 (1), R72 (1)
<i>Helichrysum fontanesii</i> Cambess. / <i>Helichrysum pendulum</i> (C. Presl) C. Presl	Spain	Balearic Islands, Majorca, Formentor, by the road to Albercutx tower, <i>Sáez s.n.</i> (no voucher)	39° 55' 35.49" N 3° 06' 41.80" E	F1	5	5	H1 (5)	R23 (2), R24 (3), R25 (2)
		Balearic Islands, Majorca, Gorg Blau, <i>Sáez s.n.</i> (no voucher)	39° 48' 30.78" N 2° 49' 13.28" E	F2	5	4	H1 (3), H10 (2)	R26 (4)
		Balearic Islands, Majorca, Randa, <i>Sáez s.n.</i> (no voucher)	39° 31' 13.33" N 2° 55' 35.95" E	F3	5	4	H1 (5)	R14 (2), R25 (3)
		Balearic Islands, Cabrera archipelago, Imperialet, <i>Sáez s.n.</i> (BC 950769)	39° 07' 42.09" N 2° 57' 23.87" E	F4	5	4	H1 (5)	R19 (4)
		Balearic Islands, Ibiza, by the way to Cala Xarraca, <i>Galbany 2245 & Arrabal</i> (BC 950763)	39° 05' 37.8" N 1° 29' 57" E	F5	6	2	H1 (5), H8 (1)	R22 (1), R25 (1), R29 (1)
		Balearic Islands, Ibiza, Santa Agnès de Corona, by the way to Cala Aubarca, <i>Galbany 2244 & Arrabal</i> (BC 950767)	39° 03' 41.5" N 1° 22' 40.5" E	F6	6	8	H1 (6)	R23 (2), R25 (7), R29 (1), R30 (1)
		Balearic Islands, Ibiza, Santa Agnès de Corona, by the way to Cala Ses Balandres, <i>Galbany 2256 & Arrabal</i> (BC 950762)	39° 02' 49.6" N 1° 19' 27.8" E	F7	5	4	H1 (5)	R13 (1), R14 (1), R18 (1), R20 (1), R21 (1), R25 (1), R26 (1), R29 (1)
		Balearic Islands, Ibiza, Vedranell, <i>Sáez 7157</i> (BC 950761)	38° 52' 07.19" N 1° 12' 30.20" E	F8	1	1	H1 (1)	R29 (1)

		Balearic Islands, Ibiza, Es Vedrà, Sáez 7150 (BC 950759)	38° 52' 01.68" N 1° 11' 55.21" E	F9	1	1	H1 (1)	R25 (1)
	Morocco	Rif mountains, Djebel Tassaout, between Talambote and Djebel Tassaout, <i>Galbany 2297 & al.</i> (BC 950795)	35° 15' 52.1" N 5° 07' 29.5" W	F10	5	5	H10 (5)	R10 (1), R18 (2), R44 (1), R45 (1), R53 (2)
		Middle Atlas, between Sefrou and Ifrane, <i>Galbany 2298 & al.</i> (BC 950797)	33° 37' 51.8" N 4° 54' 16.2" W	F11	5	3	H1 (5)	R17 (3)
		Beni-Mellal, El-Ksiba, <i>Galbany 2220 & al.</i> (BC 950771)	32° 32' 04.4" N 6° 00' 54.3" W	F12	5	5	H1 (5)	R11 (1), R12 (1), R15 (1), R16 (2), R18 (4)
	Algeria	Oran, route of Santa Cruz, <i>Vela 5</i> (BC 950773)	35° 42' 39" N 0° 39' 54" W	F13	6	4	H1 (4), H5 (2)	R16 (1), R27 (2), R28 (1), R34 (1)
		Djurdjura, Azrou n'Tohor, <i>Vela 9</i> (BC 950772)	36° 29' 19" N 4° 23' 18" E	F14	5	5	H1 (5)	R18 (5)
		Djurdjura, Col de Tirourda, <i>Aldasoro 20093</i> (BC 950778)	36° 28' 29" N 4° 21' 13" E	F15	6	5	H1 (4), H9 (2)	R18 (5)
		Bejaia, Cap Carbon, <i>Vela 2</i> (BC 950775)	36° 46' 12" N 5° 06' 15" E	F16	2	-	H1 (2)	—
		Bejaia, Pic des Singes, col, <i>Vela 4</i> (BC 950774)	36° 46' 10" N 5° 05' 43" E	F17	6	5	H1 (6)	R31 (2), R32 (2), R33 (1), R34 (1), R35 (1), R36 (1)
		Annaba, La Volie Noire, <i>Vela 6</i> (no voucher)	36° 57' 37" N 7° 41' 26" E	F18	4	2	H1 (4)	R7 (1), R8 (2), R9 (1)
<i>Helichrysum hyblaicum</i> Brullo / <i>Helichrysum pendulum</i> (C. Presl) C. Presl	Italy	Sicily, between Avola and Avola Vecchia, <i>Susanna 2771 & Garcia-Jacas</i> (BC 950758)	36° 55' 17.11" N 15° 08' 30.75" E	H1	6	4	H1 (3), H3 (3)	R4 (4)
		Sicily, between Modica and Ragusa, <i>Susanna 2772 & Garcia-Jacas</i> (BC 950755)	36° 53' 39.28" N 14° 45' 02.91" E	H2	5	4	H1 (1), H3 (1), H4 (3)	R3 (1), R4 (2), R5 (1), R6 (1), R70 (1)
<i>Helichrysum melitense</i> (Pignatti) Brullo, Lanfr., Pavone & Ronsiv. / <i>Helichrysum melitense</i> (Pignatti) Brullo, Lanfr., Pavone & Ronsiv.	Malta	Gozo island, San Lawrenz, <i>Galbany 2263 & Arrabal</i> (BC 950753)	36° 03' 46.9" N 14° 11' 27.1" E	M1	4	4	H15 (4)	R1 (3), R2 (1)
		Gozo island, Dwejra, Inland sea, <i>Galbany 2262 & Arrabal</i> (BC 950752)	36° 03' 14.97" N 14° 11' 31.33" E	M2	5	4	H15 (5)	R1 (4), R2 (1)
<i>Helichrysum nebrodense</i> Heldr. / <i>Helichrysum pendulum</i> (C. Presl) C. Presl	Italy	Sicily, Madonie mountains, Isnello, road from Cefalu to Isnello, <i>Susanna 2774 & Garcia-Jacas</i> (BC 950821)	37° 55' 18.68" N 14° 00' 06.73" E	N1	6	4	H2 (6)	R56 (2), R58 (2)
<i>Helichrysum panormitanum</i> Guss. / <i>Helichrysum pendulum</i> (C. Presl) C. Presl	Italy	Sicily, San Vito lo Capo, prop de Torre dell'Impiso, <i>Galbany 2329 & Garcia-Jacas</i> (BC 950770)	38° 08' 35.7" N 12° 46' 14.5" E	PA1	6	4	H1 (5), H6 (1)	R56 (4)
		Sicily, by the road from Castellammare del Golfo to Balata di Baida, <i>Vilatersana 1161 & al.</i> (BC 950754)	38° 1' 56" N 12° 52' 16" E	PA2	6	1	H1 (6)	R56 (1)
		Sicily, Palermo, Sferracavallo, <i>Galbany 2321 & Garcia-Jacas</i> (BC 950756)	38° 12' 03.5" N 13° 16' 02.8" E	PA3	7	5	H1 (7)	R55 (1), R56 (3), R57 (3), R59 (1)
		Sicily, Palermo, Monte Pellegrino, <i>Galbany 2322 & Garcia-Jacas</i> (BC 950757)	38° 09' 23.0" N 13° 22' 02.6" E	PA4	5	5	H1 (5)	R56 (5)
		Sicily, Bagheria, Capo Zafferano, <i>Galbany 2319 & Garcia-Jacas</i> (BC 950768)	38° 06' 40.4" N 13° 32' 22.0" E	PA5	6	2	H1 (6)	R55 (1), R56 (2)
		Sicily, dirty road from Portella della Pàglia to La Pizzuta, <i>Galbany 2309 & Garcia-Jacas</i> (BC 950784)	37° 59' 38.6" N 13° 15' 03.0" E	PA6	2	1	H2 (2)	R46 (1)
<i>Helichrysum pendulum</i> (C. Presl) C. Presl / <i>Helichrysum pendulum</i> (C. Presl) C. Presl	Italy	Sicily, Madonie, parco regionale delle Madonie, crest of Mount Quacella, by the way to Vallone Madonna delle Angeli, <i>Vilatersana 1154 & al.</i> (BC 950750)	37° 50' 42" N 14° 0' 53" E	PE1	5	4	H2 (5)	R56 (1), R62 (3)

<i>Helichrysum saxatile</i> Moris / <i>Helichrysum saxatile</i> Moris	Italy	Sardinia, pr. Oliena, <i>Galbany 2084 & Arrabal</i> (BC 950787)	40° 15' 26.5" N 9° 25' 5.3" E	S1	5	4	H12 (5)	R62 (3), R65 (2), R66 (1)
		Sardinia, road between Grotta Ispinigoli and Cala Gonone, <i>Galbany 2078 & Arrabal</i> (BC 950799)	40° 17' 59.8" N 9° 37' 58.4" E	S2	5	-	H14 (5)	—
		Sardinia, between Genna Silana and Urzulei, <i>Galbany 2082 & Arrabal</i> (BC 950786)	40° 06' 4.5" N 9° 30' 43.8" E	S3	6	2	H12 (6)	R64 (1), R62 (1), R66 (2)
		Sardinia, road between Baunei and San Pietro, <i>Galbany 2083 & Arrabal</i> (BC 950800)	40° 03' 55.7" N 9° 40' 1.4" E	S4	2	3	H13 (2)	R55 (1), R60 (1), R61 (1), R63 (1), R66 (1), R67 (1)
		Sardinia, Ulassai, <i>Carnicero 390 & Galbany</i> (BC 950788)	39° 48' 30.06" N 9° 29' 52.01" E	S5	5	1	H14 (5)	R71 (1)
<i>Helichrysum valentinum</i> Rouy / <i>Helichrysum valentinum</i> Rouy	Spain	Alicante, Montgó mountain, <i>Galbany 2271 & al.</i> (BC 950801)	38° 48' 50.68" N 0° 06' 34.33" E	V1	5	4	H1 (5)	R34 (1), R38 (1), R41 (1), R42 (2), R43 (1)
		Alicante, Moraira, by the way to Cala Llebeig, <i>Galbany 2284, 2285, 2286, 2288, 2289 & al.</i> (BC 950789; BC 950790; BC 950791; BC 950792; BC 950793; BC 950794)	38° 41' 52.4" N 0° 09' 20.06" E	V2	5	4	H1 (5)	R49 (1), R50 (2), R51 (1), R52 (1)
		Alicante, Castell de Castells, Cerro de los Parados, <i>Galbany 2291 & al.</i> (BC 950802)	38° 43' 25.91" N 0° 11' 35.48" W	V3	5	5	H1 (4), H7 (1)	R43 (1), R42 (5), R37 (1)
		Alicante, Benifato, Vall de Guadalest, <i>Galbany 2292 & al.</i> (BC 950803)	38° 40' 23.44" N 0° 12' 24.05" W	V4	5	3	H1 (5)	R39 (1), R40 (1), R42 (1)

77

Species	Country	Locality and voucher	Coordinates	Name used in the figures	Number of specimens for <i>rpl32-trnL</i> spacer	Number of specimens for ETS	ETS ribotype
B. OTHER SPECIES INCLUDED IN ANALYSES							
Sect. <i>Stoechadina</i>							
<i>Helichrysum crassifolium</i> (L.) D. Don	Spain	Balearic Islands, Majorca, Cap de Formentor, <i>Galbany & Sáez s.n.</i> (BCN 6117)	[39° 56' 02.70" N 3° 05' 59.15" E]	<i>H. crassifolium</i>	1	1	R90 (1)
<i>Helichrysum heldreichii</i> Boiss.	Greece	Crete, Sphakia, Aradena canyon, <i>Garnatje 134 & Luque</i> (BCN 6123)	[35° 14' 40.54" N 24° 04' 35.11" E]	<i>H. heldreichii</i>	1	1	R77 (1)
<i>Helichrysum italicum</i> (Roth) G. Don subsp. <i>italicum</i>	Bosnia-Herzegovina	Herzegovina, pen. Neum, <i>Redžić & al. s.n.</i> (BCN 20756)	[43° 54' 54.97" N 17° 40' 31.77" E]	<i>H. italicum</i> subsp. <i>italicum</i>	-	1	R104 (1)
	Croatia	Makirina, Pirovac, Šibenik-Knin County, <i>Boršić s.n.</i> (BC)	[43° 49' 02.12" N 15° 40' 44.69" E]	<i>H. italicum</i> subsp. <i>italicum</i>	1	1	R102 (1)
	Italy	Toscana, Grosseto, road from Mascherino to Convento Padri Passionati, <i>Vilatersana 1229 & al.</i> (BC 841002)	42° 25' 5" N 11° 9' 36" E	<i>H. italicum</i> subsp. <i>italicum</i>	1	1	R101 (1), R102 (1)
<i>Helichrysum italicum</i> subsp. <i>siculum</i> (Jord. & Fourn.) Galbany, L. Sáez & Benedí	Italy	Sicily, Palermo, <i>Vilatersana 1172 & al.</i> (BC 841000)	38° 0' 38" N 14° 10' 36" E	<i>H. italicum</i> subsp. <i>siculum</i>	1	-	-
		Sicily, Messina, Novara di Sicilia to Francavilla di Sicilia, <i>Vilatersana 1176 & al.</i> (BC 840999)	37° 58' 39.36" N 15° 08' 37.26" E	<i>H. italicum</i> subsp. <i>siculum</i>	1	-	-
<i>Helichrysum italicum</i> subsp. <i>tyrrhenicum</i>	France	Corsica, La Tonnara, beach, <i>Galbany 2048 & Arrabal</i> (BC 841001)	41° 25' 33.9" N 9° 6' 19.4" E	<i>H. italicum</i> subsp. <i>tyrrhenicum</i>	1	-	-

(Bacch., Brullo & Giusso) Herrando, J.M. Blanco, L. Sáez & Galbany								
	Spain	Balearic Islands, Dragonera, Sáez 6991 (BC)	39° 35' 02.21" N 2° 19' 16.81" E	<i>H. italicum</i> subsp. <i>tyrrhenicum</i>	1	1	R105 (1)	
<i>Helichrysum litoreum</i> Guss.	Italy	Lipari, S of Cava del Pomice, by the road to Porticello, <i>Vilatersana 1182 & al.</i> (BC 840998)	38° 30' 17" N 141° 57' 44" E	<i>H. litoreum</i>	1	1	R106 (1)	
		Lazio, Latina, isole Ponziane, Isola di Ventotene, <i>Vilatersana 1114 & al.</i> (BC 840997)	40° 47' 51" N 13° 25' 41" E	<i>H. litoreum</i>	-	1	R99 (1)	
		Lazio, Latina, S. Felice Circeo, via del Faro, <i>Vilatersana 1105 & al.</i> (BC 840996)	41° 13' 38" N 13° 5' 22" E	<i>H. litoreum</i>	1	1	R99 (1), R100 (1)	
<i>Helichrysum massanellanum</i> Herrando, J. M. Blanco, L. Sáez & Galbany	Spain	Balearic Islands, Majorca, Coll d'es Telègraf, <i>Galbany & Sáez s.n.</i> (BCN 6115)	39° 48' 14.45" N 2° 50' 53.51" E	<i>H. massanellanum</i>	-	1	R102 (1), R103 (1)	
<i>Helichrysum serotinum</i> (DC.) Boiss. subsp. <i>picardii</i> (Boiss. & Reut.) Galbany, L. Sáez & Benedí	Spain	A Coruña, Carnota, Praia de Mallou, <i>Galbany 2094 & Arrabal</i> (BC 840995)	[42° 48' 58" N 9° 6' 25" W]	<i>H. serotinum</i> subsp. <i>picardii</i>	3	2	R97 (1), R98 (1), R93 (1),	
		A Coruña, Carballo, Praia de Razo, <i>Galbany 2097 & Arrabal</i> (BC 840994)	[43° 17' 33" N 8° 41' 39" W]	<i>H. serotinum</i> subsp. <i>picardii</i>	2	2	R93 (2)	
<i>Helichrysum serotinum</i> (DC.) Boiss. subsp. <i>serotinum</i>	Spain	Málaga, Alpujarras, Capileira, <i>Galbany & Arrabal s.n.</i> (BC 840993)	36° 55' 37.70" N 3° 21' 58.58" W	<i>H. serotinum</i> subsp. <i>serotinum</i>	1	1	R95 (1)	
		Catalonia, Prades mountains, <i>Blanco & al. s.n.</i> (BCN 20880)	[41° 18' 35" N 0° 59' 21" E]	<i>H. serotinum</i> subsp. <i>serotinum</i>	1	1	R97 (1), R98 (1)	
		Catalonia, between Fembra Morta and l'Avellana, <i>Quadrada s.n.</i> (BCN 26191)	[41° 34' 48" N 1° 43' 24" E]	<i>H. serotinum</i> subsp. <i>serotinum</i>	1	1	R96 (1)	
		Catalonia, Ports de Beseit, Barranc de la Galera, <i>Blanco & al. s.n.</i> (BCN 20877)	[40° 43' 22,52" N 0° 20' 26" E]	<i>H. serotinum</i> subsp. <i>serotinum</i>	1	1	R94 (1), R95 (1)	
<i>Helichrysum stoechas</i> (L.) Moench	Greece	Crete, Thripti, <i>Galbany 2143 & al.</i> (no voucher available)	35° 05' 15.8" N 25° 51' 37.5" E	<i>H. stoechas</i>	1	-	-	
		Crete, Thripti, <i>Galbany 2144 & al.</i> (no voucher available)	35° 05' 15.8" N 25° 51' 37.5" E	<i>H. stoechas</i>	1	1	R78 (1), R80 (1)	
		Crete, Paleokastro, <i>Galbany 2154 & al.</i> (BC 950160)	35° 23' 28.6" N 25° 02' 03.0" E	<i>H. stoechas</i>	1	1	R76 (1), R81 (1)	
		Crete, Paleokastro, <i>Galbany 2157 & al.</i> (BC 940992)	35° 23' 28.6" N 25° 02' 03.0" E	<i>H. stoechas</i>	1	1	R80 (1), R83 (1)	
		Rhodes, between Kritinia and Siana, <i>Galbany 2172 & al.</i> (BC 950743)	36° 12' 29.1" N 27° 48' 43.7" E	<i>H. stoechas</i>	1	1	R75 (1), R82 (1)	
		Karpathos, Finiki, <i>del Rey & Vilatersana 1760</i> (BC 950744)	35° 29' 27" N 27° 07' 08" E	<i>H. stoechas</i>	1	2	R78 (1), R79 (1), R84 (1)	
	Spain	Alicante, Marina Alta, Teulada, Benimarco, <i>Galbany 2293 & al.</i> (BC 950745)	38° 42' 33.5" N 0° 05' 38.4" E	<i>H. stoechas</i>	1	2	R91 (1), R92 (1), R110 (1)	
		Alicante, Finestrat, Puig Campana, <i>Galbany 2294 & al.</i> (BC 950746)	38° 35' 25.8" N 0° 12' 28.3" W	<i>H. stoechas</i>	-	1	R91 (1), R108 (1)	
		Balearic Islands, Ibiza, Vedranell, <i>Sáez s.n.</i> (BC)	38° 52' 07.19" N 1° 12' 30.20" E	<i>H. stoechas</i>	1	1	R86 (1), R87 (1)	
		Balearic Islands, Ibiza, by the road between Cala Xarraca and St. Miquel, <i>Galbany 2246 & Arrabal</i> (BC 950747)	39° 05' 37.8" N 1° 29' 57" E	<i>H. stoechas</i>	1	1	R85 (1), R88 (1)	
		Balearic Islands, Ibiza, Santa Agnès de Corona, by the way to Cala Aubarca, <i>Galbany 2232 & Arrabal</i> (BC)	39° 03' 41.5" N 1° 22' 40.5" E	<i>H. stoechas</i>	-	1	R108 (1)	
		Lleida, la Granadella, <i>Galbany s.n.</i> (BCN 6114)	[41° 21' 20.93" N 0° 40' 03.64" E]	<i>H. stoechas</i>	1	1	R89 (1)	
		Almería, Rodalquilar, <i>Vilatersana 1103</i> (BC)	[36° 51' N 2° 02' W]	<i>H. stoechas</i>	2	2	R108 (1), R109 (1)	
	Tunisia	Nabeul. Cap Bon, <i>Romo & Vilatersana 1385</i> (BC)	37° 03' 34.5" N 10° 59' 56.4" E	<i>H. stoechas</i>	1	1	R73 (1), R74 (1)	

		Bizerte. N Bizerte, over lighthouse, <i>Romo & Vilatersana 1310</i> (BC)	37° 03' 34.5" N 10° 59' 56.4" E	<i>H. stoechas</i>	2	2	R107 (2)
Other sections							
<i>Anaphalis margaritacea</i> (L.) Benth. & Hook.f.	Canada	West Canada, <i>Blanco & Blanco s.n.</i> (BC 950748)	not available	<i>Anaphalis margaritacea</i>	1	-	-
<i>Helichrysum argyrosphaerum</i> DC.	South Africa	Free State Province, <i>Koekemoer 3532</i> (BC 950749)	not available	<i>H. argyrosphaerum</i>	1	-	-
<i>Helichrysum arwae</i> J. R. I. Wood	Yemen	Jebel Taaqa, Ex Roy. Bot. Gard. Kew (BCN 6103)	[13° 54' 40.20" N 44° 08' 06.36" E]	<i>H. arwae</i>	1	-	-
<i>Helichrysum citrispinum</i> Del.	Ethiopia	Mount Choke, <i>Aldasoro 9952 & Alarcón</i> (BC)	[10° 42' 13.34" N 37° 50' 56.86" E]	<i>H. citrispinum</i>	1	-	-
<i>Helichrysum devium</i> J. Y. Johnson	Portugal	Madeira island, Ponta de São Lourenço, <i>Jardim s.n.</i> (MADJ)	[32° 44' 09.86" N 16° 40' 11.00" W]	<i>H. devium</i>	1	-	-
<i>Helichrysum foetidum</i> (L.) Moench	South Africa	Ex Dresden Bot. Gard. (BCN 8219)	not available	<i>H. foetidum</i>	1	-	-
<i>Helichrysum gossypinum</i> Sch. Bip.	Spain	Canary Islands, Lanzarote, Máguez, La Pescosa, <i>Galbany & Arrabal s.n.</i> (BCN 25226)	[29° 10' 04.24" N 13° 30' 19.91" W]	<i>H. gossypinum</i>	1	1	-
<i>Helichrysum litorale</i> H. Bol.	South Africa	Eastern Cape Province, <i>Romo 14500 & al.</i> (BC 867722)	33° 36' 00.71" S 26° 53' 48.88" E	<i>H. litorale</i>	1	-	-
<i>Helichrysum marginatum</i> DC.	South Africa	Eastern Cape Province, between Rhodes and Naudesnek, <i>Romo 14434 & al.</i> (BC 867675)	30° 45' 32.70" S 28° 06' 12.76" E	<i>H. marginatum</i>	1	-	-
<i>Helichrysum melaleucum</i> Rchb. ex Holl	Portugal	Madeira island, Pico do Facho, <i>Jardim s.n.</i> (MADJ)	[32° 43' 45.57" N 16° 45' 44.18" W]	<i>H. melaleucum</i>	1	-	-
<i>Helichrysum monizii</i> Lowe	Portugal	Madeira island, Cabo Girão, <i>Jardim s.n.</i> (MADJ)	[32° 39' 26.67" N 17° 00' 19.54" W]	<i>H. monizii</i>	1	-	-
<i>Helichrysum monogynum</i> B. L. Burt & Sunding	Spain	Canary Islands, Lanzarote, San Bartolomé, <i>Galbany & Arrabal s.n.</i> (BCN 25227)	[28° 59' 16.24" N 13° 36' 02.89" W]	<i>H. monogynum</i>	1	-	-
<i>Helichrysum montanum</i> DC.	South Africa	Kwazulu-Natal Province, <i>Romo 14392 & al.</i> (BC 867659)	30° 14' 40.28" S 29° 05' 43.47" E	<i>H. montanum</i>	1	-	-
<i>Helichrysum mussae</i> Nevski	Tajikistan	Zeravshchan mts., <i>Filatov 81 & al.</i> (LE)	not available	<i>H. mussae</i>	1	-	-
<i>Helichrysum obconicum</i> DC.	Portugal	Madeira island, Porto Novo, <i>Jardim s.n.</i> (MADJ)	[32° 39' 48.91" N 16° 48' 21.36" W]	<i>H. obconicum</i>	1	-	-
<i>Helichrysum orientale</i> (L.) Gaertn.	Greece	Crete, below Thripti, Ex Roy. Bot. Gard. Kew (BCN 6098)	35° 05' 15.8" N 25° 51' 37.5" E	<i>H. orientale</i>	1	1	-
<i>Helichrysum rubicundum</i> (K. Koch) Bornm.	Iran	Azarbaidjan, entre Mianeh & Kivi, 4 km N de Top-Ghara, <i>Termeh & al. s.n.</i> (IRAN 35924,4)	[37° 30' 21.81" N 47° 58' 48.47" E]	<i>H. rubicundum</i>	1	-	-
<i>Helichrysum rugulosum</i> Less.	South Africa	Free State Province, <i>Romo 14331 & al.</i> (BC 867613)	27° 39' 13.64" S 28° 30' 47.32" E	<i>H. rugulosum</i>	1	-	-
<i>Helichrysum sibthorpii</i> Rouy	Greece	Mt. Athos. Ex Roy. Bot. Gard., Kew s.n. (BCN 6099)	[40° 09' 23.66" N 24° 19' 26.86" E]	<i>H. sibthorpii</i>	1	-	-
<i>Helichrysum thianschanicum</i> Regel	Tajikistan	Ex hort. Hortus Botanicus Táhor (BCN 10337)	not available	<i>H. thianschanicum</i>	1	-	-

This is the supplementary material of an Accepted Manuscript of an article published in TAXON on August 2017, available online:
<https://doi.org/10.12705/664.7>

81
82
83
84
85

86
87
88
89
90
91
92

Table S2. Descriptive statistics of all characters studied for each taxon, and results from the overall test for difference between groups (*p*-value) and of pair-wise comparisons of means (*post-hoc* tests). Only significant differences found in the pairwise comparisons are reported. *X* = mean value; S.D. = standard deviation; Min. = minimum value; Max. = maximum value. Values in brackets are outliers of the common interval of values. Taxa abbreviations and number of studied specimens (*N*): pen = *H. pendulum* (*N* = 80); sax = *H. saxatile* (*N* = 13); mel = *H. melitense* (*N* = 8); val = *H. valentinum* (*N* = 28); err = *H. errerae* (*N* = 7).

Character	Taxon	<i>X</i>	SD	Min-Max	<i>p</i> -value	Significant differences in <i>post-hoc</i> test
1. Presence / absence (0) of succulent leaves ¹	pen	0.00	0.00	0–0	0.000	mel > pen <i>p</i> = 0.000 mel > sax <i>p</i> = 0.000 mel > val <i>p</i> = 0.000 mel > err <i>p</i> = 0.000
	sax	0.00	0.00	0–0		
	mel	1.00	0.00	1–1		
	val	0.00	0.00	0–0		
	err	0.00	0.00	0–0		
2. Basal and median cauline leaf length (mm) ²	pen	38.04	11.61	10–70(85)	0.000	val < pen <i>p</i> = 0.000 val < mel <i>p</i> = 0.005 val < err <i>p</i> = 0.005
	sax	31.35	10.72	(15)20–65		
	mel	38.15	9.86	(13.9)26–55(69)		
	val	23.35	6.34	(8.5)12–36(53)		
	err	38.87	8.74	(22.5)26–53(58)		
3. Basal and median cauline leaf width (mm) ²	pen	2.10	0.91	(0.6)1–4(7)	0.000	mel > pen <i>p</i> = 0.001 mel > sax <i>p</i> = 0.000 mel > val <i>p</i> = 0.000 err > sax <i>p</i> = 0.046 err > val <i>p</i> = 0.032
	sax	1.68	0.42	(0.8)1–2.5(3)		
	mel	3.37	0.72	(1.8)2.7–4.7(5.8)		
	val	1.74	0.56	(0.8)1–2.5(4)		
	err	2.80	1.55	1–5(8)		
4. Basal and median cauline leaf length / width ²	pen	20.92	6.85	(4.3)10–40(58.75)	0.000	mel < pen <i>p</i> = 0.001 mel < sax <i>p</i> = 0.020 val < pen <i>p</i> = 0.001
	sax	19.93	6.69	6.78–32.86(50)		
	mel	11.36	1.98	6.95–14.81(16.95)		
	val	14.49	3.70	(6)8–22(33)		
	err	17.73	7.45	5.6–34.2		
5. Basal and median cauline leaf margin (flat or revolute). 0: all leaves flat; 1: most leaves flat, some revolute; 2: flat and revolute leaves in the same proportion; 3: most leaves revolute, some flat; 4: all leaves revolute ¹	pen	2.06	0.85	(0)1–3(4)	0.001	sax > mel <i>p</i> = 0.001
	sax	2.76	0.43	3–2		
	mel	1.28	0.48	(0.5)1–2		
	val	2.12	0.83	1–3(4)		
	err	1.85	1.21	(0)1–3		
6. Egladular indumentum of adaxial leaf side. 0: 0–5% coverage; 1: 6–25% coverage; 2: 26–50% coverage; 3: 51–75% coverage; 4: 76–100% coverage ¹	pen	2.27	0.78	1–3(4)	0.000	pen < sax <i>p</i> = 0.000 pen < mel <i>p</i> = 0.000 mel > val <i>p</i> = 0.000 mel > err <i>p</i> = 0.000
	sax	3.15	0.55	(2)3–4		
	mel	4.00	0.00	4–4		
	val	2.64	0.50	(1.5)2–3		
	err	2.42	0.73	1.5–3		
7. Glandular indumentum of abaxial leaf side. 0: 0–5% coverage; 1: 6–25% coverage; 2: 26–50% coverage; 3: 51–75% coverage; 4: 76–100% coverage ²	pen	0.46	0.67	0–1(3)	0.000	val > pen <i>p</i> = 0.000 val > sax <i>p</i> = 0.010 val > mel <i>p</i> = 0.002 val > err <i>p</i> = 0.003
	sax	0.96	0.92	0–2		
	mel	0.68	0.45	0–1		
	val	1.73	0.72	(0)1–2(3)		
	err	0.64	0.47	0–1		
8. Synflorescence length (mm) ²	pen	34.37	10.52	(5)15–70(93)	0.000	val < pen <i>p</i> = 0.000 val < mel <i>p</i> = 0.000 err > sax <i>p</i> = 0.012 err > val <i>p</i> = 0.000
	sax	28.79	9.08	12–40(52)		
	mel	38.77	9.27	17–55(65)		
	val	22.04	5.16	(11)16–33(48)		
	err	43.12	8.34	27–58(75)		
9. Synflorescence width (mm) ²	pen	46.33	13.70	(6.5)18–94(125)	0.000	val < pen <i>p</i> = 0.000 val < mel <i>p</i> = 0.030 err > sax <i>p</i> = 0.037 err > val <i>p</i> = 0.000
	sax	41.71	11.54	22–68		
	mel	47.17	9.53	25–75(92)		
	val	32.88	7.56	(18)22–45(68)		
	err	57.95	8.27	40–75(90)		
10. Synflorescence length / synflorescence width ²	pen	0.75	0.14	0.46–1048	0.010	val < pen <i>p</i> = 0.049 val < mel <i>p</i> = 0.033
	sax	0.68	0.12	0.46–1.12		
	mel	0.82	0.06	0.64–1.03		

Character	Taxon	\bar{X}	SD	Min-Max	<i>p</i> -value	Significant differences in <i>post-hoc</i> test
	val	0.67	0.09	0.43–1		
	err	0.74	0.08	0.48–1		
11. Number of capitula per synflorescence ³	pen	42.93	23.73	(7)13–100(146)	0.000	val < pen <i>p</i> = 0.000 val < sax <i>p</i> = 0.001 val < mel <i>p</i> = 0.000 val < err <i>p</i> = 0.000
	sax	40.92	18.20	12–79(120)		
	mel	50.82	25.81	(7)25–96(125)		
	val	20.39	7.02	(5)9–30(53)		
	err	54.18	11.60	24–70(103)		
12. Synflorescence density. Number of capitula per synflorescence / (synflorescence length × synflorescence width) ²	pen	0.02	0.01	–	>0.05	
	sax	0.03	0.01	–		
	mel	0.02	0.00	–		
	val	0.02	0.01	–		
	err	0.02	0.00	–		
13. Capitulum length (mm) ²	pen	5.98	0.55	(4)5–7(8)	0.000	mel > pen <i>p</i> = 0.001 mel > sax <i>p</i> = 0.000 mel > err <i>p</i> = 0.000 val > pen <i>p</i> = 0.013 err < pen <i>p</i> = 0.000 err < val <i>p</i> = 0.000 sax < pen <i>p</i> = 0.013 sax < val <i>p</i> = 0.000
	sax	5.48	0.61	4.5–6.5(7)		
	mel	6.73	0.38	5.7–8		
	val	6.35	0.40	(5)5.5–6.5(7.5)		
	err	5.10	0.27	4.2–6		
14. Capitulum width (mm) ²	pen	5.57	0.95	(3)4–7(8)	0.004	val > sax <i>p</i> = 0.021 val > err <i>p</i> = 0.016
	sax	5.20	0.80	3.7–7(8)		
	mel	5.54	0.33	(4.5)5–6.7		
	val	6.08	0.64	(4.2)5–7(8)		
	err	4.94	0.82	3.9–6.5(7)		
15. Capitulum length / capitulum width ²	pen	1.09	0.15	0.69–1.43(2)	0.034	mel > val <i>p</i> = 0.019
	sax	1.07	0.14	0.8–1.36(1.58)		
	mel	1.22	0.09	0.95–1.5		
	val	1.05	0.08	0.8–1.4		
	err	1.05	0.14	0.83–1.41		
16. Number of pistillate florets per capitulum ³	pen	12.34	3.42	(5)7–24(29)	0.000	pen > val <i>p</i> = 0.042 sax < pen <i>p</i> = 0.000 sax < val <i>p</i> = 0.000 sax < err <i>p</i> = 0.014
	sax	7.46	1.98	4–13		
	mel	9.54	1.80	6–13		
	val	10.48	2.25	(5)7–15(23)		
	err	10.61	1.91	7–14		
17. Number of hermaphroditic florets per capitulum ²	pen	34.31	7.53	(21)25–55(62)	0.000	pen > err <i>p</i> = 0.007 sax < pen <i>p</i> = 0.000 sax < mel <i>p</i> = 0.004 sax < val <i>p</i> = 0.002
	sax	23.17	6.01	13–37		
	mel	33.93	5.40	(19)31–40		
	val	31.55	4.78	(20)24–42(51)		
	err	25.23	3.69	(15)20–31		
18. Total number of florets per capitulum ²	pen	46.71	9.63	(23)30–74(88)	0.000	pen > err <i>p</i> = 0.011 sax < pen <i>p</i> = 0.000 sax < mel <i>p</i> = 0.007 sax < val <i>p</i> = 0.001
	sax	30.64	6.13	(20)24–47		
	mel	43.47	6.89	(26–94)2–49(53)		
	val	42.05	5.55	(30)35–56(64)		
	err	35.85	5.20	24–43		
19. Total number of pistillate per number of total florets per capitulum ²	pen	0.26	0.04	0.13–0.41	0.027	mel < err <i>p</i> = 0.029
	sax	0.25	0.08	0.12–0.48		
	mel	0.22	0.02	0.15–0.28		
	val	0.25	0.04	0.11–0.41		
	err	0.29	0.02	0.23–0.37		
20. Outermost involucre bract length (mm) ²	pen	3.47	0.53	2–4.9	0.000	sax < pen <i>p</i> = 0.000 sax < mel <i>p</i> = 0.000 sax < val <i>p</i> = 0.000
	sax	2.54	0.31	1.9–3(3.2)		
	mel	3.68	0.36	2.7–4.5(5)		
	val	4.05	0.32	3–5(5.5)		

Character	Taxon	\bar{X}	SD	Min-Max	p -value	Significant differences in <i>post-hoc</i> test
	err	3.00	0.19	2.4–3.4(3.9)		err < mel $p = 0.038$
						val > pen $p = 0.000$ val > err $p = 0.000$
21. Outermost involucre bract width (mm) ²	pen	2.04	0.35	(0.8)1.5–3.2	0.000	err < pen $p = 0.000$ err < sax $p = 0.004$ err < mel $p = 0.000$ err < val $p = 0.000$
	sax	1.89	0.29	1.1–2.9		
	mel	2.37	0.21	(1.5)2–3		
	val	2.27	0.31	(1.4)2–3		
	err	1.34	0.30	(0.5)1–1.8(2)		
						val > pen $p = 0.017$ val > sax $p = 0.009$ mel > sax $p = 0.015$
22. Outermost involucre bract length / outermost involucre bract width ²	pen	1.73	0.27	(0.85)1.3–2.4(3.5)	0.000	sax < pen $p = 0.000$ sax < val $p = 0.000$ err > pen $p = 0.000$ err > sax $p = 0.000$ err > mel $p = 0.000$ err > val $p = 0.000$
	sax	1.36	0.11	0.93–1.79		
	mel	1.58	0.18	1.1–2.08(2.42)		
	val	1.82	0.28	1.3–2.48(2.93)		
	err	2.41	0.67	1.6–3.10(6)		
23. Outermost involucre bract texture. 0: bract totally papery; 0.5: bract herbaceous in its basal half and papery in its distal half; 1: bract totally herbaceous ¹	pen	0.00	0.00	0–0	0.000	err > pen $p = 0.000$ err > sax $p = 0.000$ err > mel $p = 0.000$ err > val $p = 0.000$
	sax	0.00	0.00	0–0		
	mel	0.00	0.00	0–0		
	val	0.00	0.00	0–0		
	err	0.71	0.26	0.5–1		
24. Eglandular indumentum of outermost involucre bract. 0: 0–5% coverage; 1: 6–25% coverage; 2: 26–50% coverage; 3: 51–75% coverage; 4: 76–100% coverage ¹	pen	1.00	0.00	1–1	0.000	err > pen $p = 0.000$ err > sax $p = 0.000$ err > mel $p = 0.000$ err > val $p = 0.000$
	sax	1.00	0.00	1–1		
	mel	1.00	0.00	1–1		
	val	1.00	0.00	1–1		
	err	4.00	0.00	4–4		
25. Innermost involucre bract length (mm) ²	pen	4.55	0.52	3.4–6.2	0.000	val > pen $p = 0.004$ val > sax $p = 0.021$ val > err $p = 0.001$ err < mel $p = 0.032$
	sax	4.44	0.40	3.5–5		
	mel	4.80	0.27	4.2–5.4		
	val	4.90	0.23	(4)4.8–5.4(5.8)		
	err	4.13	0.10	3.9–4.5		
26. Innermost involucre bract width (mm) ²	pen	0.98	0.13	(0.4)0.7–1.5(2)	0.000	mel > pen $p = 0.000$ mel > sax $p = 0.000$ mel > val $p = 0.000$ mel > err $p = 0.000$ sax < val $p = 0.049$
	sax	0.93	0.11	(0.5)0.7–1.3		
	mel	1.28	0.13	1–1.5(2)		
	val	1.04	0.09	0.7–1.5(1.9)		
	err	0.96	0.13	0.6–1.3		
27. Innermost involucre bract length / innermost involucre bract width ²	pen	4.73	0.65	(2)3–7(10)	0.001	mel < pen $p = 0.001$ mel < sax $p = 0.002$ mel < val $p = 0.001$
	sax	4.89	0.72	3.3–7		
	mel	3.83	0.40	(2.40)3–4.72		
	val	4.80	0.46	(2.63)3.50–5.56(7.14)		
	err	4.38	0.69	3.08–5(6.66)		
28. Eglandular indumentum of innermost involucre bract. 0: 0–5% coverage; 1: 6–25% coverage; 2: 26–50% coverage; 3: 51–75% coverage; 4: 76–100% coverage ¹	pen	1.68	0.72	0.5–2(3)	0.011	
	sax	2.23	0.63	1–3		
	mel	1.62	0.35	1–2		
	val	2.08	0.52	(1)2–3		
	err	2.07	0.93	1–3		
29. Glandular indumentum of innermost involucre bract. 0: 0–5% coverage; 1: 6–25% coverage; 2: 26–50% coverage; 3: 51–75% coverage; 4: 76–100% coverage ¹	pen	0.73	0.57	0–2	0.000	pen < sax $p = 0.000$ val > pen $p = 0.000$ val > mel $p = 0.042$ val > err $p = 0.000$
	sax	1.46	0.69	0.5–2		
	mel	1.28	0.41	(0.5)1–1.5(1.75)		
	val	1.89	0.39	1–2(2.5)		
	err	0.85	0.37	0.5–1		

Character	Taxon	X	SD	Min-Max	p-value	Significant differences in <i>post-hoc</i> test
30. Average of innermost involucre bract length /outermost involucre bract length ²	pen	1.27	0.27	–	0.000	sax > pen <i>p</i> = 0.000
	sax	1.76	0.17	–		sax > mel <i>p</i> = 0.000
	mel	0.93	0.28	–		sax > val <i>p</i> = 0.000
	val	1.21	0.09	–		sax > err <i>p</i> = 0.006
	err	1.38	0.11	–		mel < pen <i>p</i> = 0.001
						mel < val <i>p</i> = 0.026
						mel < err <i>p</i> = 0.003
31. Number of involucre bracts per capitulum ²	pen	37.51	6.44	(24)27–58	0.04	pen > val <i>p</i> = 0.010
	sax	34.66	5.61	(21)24–45		
	mel	35.79	3.08	29–42		
	val	33.38	3.73	(23)27–40(45)		
	err	31.85	2.96	27–40		

93

94

¹ Kruskal–Wallis and Bonferroni as *post-hoc* test

95

² ANOVA and Tukey as *post-hoc* test

96

³ Previously transformation to log. ANOVA and Tukey as *post-hoc* test

97

98

99

Appendix S1:

100

Studied material for morphometric analyses. Previous taxonomic treatment and the final taxonomic treatment are given for each taxa, the latter in bold. Individuals used in molecular analyses are marked with an asterisk (*). [] indicates that coordinates are approximate.

101

102

103

104

Helichrysum pendulum complex

105

106

Helichrysum boissieri Nyman / ***Helichrysum pendulum*** (C. Presl) C. Presl

107

GIBRALTAR: Gibraltar, in rupibus, V–1837, *Boissier s.n.* (G; K; P; W); Montis Gibralt., in fissuris rup., 31–V–1922, *Gros s.n.* (BC 30846); Montis Gibralt., in fissuris rup., 31–V–1922, *Gros s.n.* (BC 30846); in rupibus calc., 100 m, 15–V–1935, *Font Quer s.n.* (BC 86574); in rupibus calc., 100 m, 15–V–1935, *Font Quer s.n.* (BC 86574); Catalan Bay, arenas mezcladas con rocas calizas, 16–V–1985, *Valdés 55 & al.* (MA 501687); *Peñón de Gibraltar, 36°08'47,65"N 5°20'43,92"W, *Galbany 2191 & Arrabal* (BC 950783).

111

112

113

Helichrysum errerae Tineo var. *errerae* / ***Helichrysum errerae*** Tineo

114

115

ITALY: Pantelleria: insula Pantellaria, in rupestribus, 1855, *E. & A. Huet du Pavillon s.n.* (G); Pantelleria, IV–1863, *Errera s.n.* (FI); Pantelleria, in rupibus vulcanicis, V–1901, *Coll s.n.* (H. Ross Herbarium Siculum 244) (G); *prop del poble de Pantelleria, 36°49'29,0"N 11°55'54,0"E, 10 m, màquia de *Thymelaea*, *Pistacia*, *Capparis*, *Smilax*, etc., sobre roca volcànica, prop del mar, 02–VI–2012, *Galbany 2324* (BC 950782); *NE de l'illa, pr. Cala 5 Denti, 36°49'11,8"N 11°59'58,5"E, 38 m, màquia litoral de *Cistus*, *Euphorbia dendroides*, etc., 02–VI–2012, *Galbany 2327* (BC 950781); *entre Scauri i Balata d. Turchi, 36°45'09,7"N 11°58'47,9"E, 118 m, màquia de *Rosmarinus*, *Cistus*, *Capparis*, *Euphorbia dendroides*, etc., sobre roca volcànica, 02–VI–2012, *Galbany 2325* (BC 950780); Pantelleria, *s.d.*, *Errera s.n.* (K).

121

122

123

124

Helichrysum errerae Tineo var. *messerii* (Pignatti) Raimondo / ***Helichrysum pendulum*** (C. Presl) C. Presl

125

126

ITALY: Sicily: Marettimo, in rupibus, V–VIII–1900, *Ross s.n.* (BC 30851); *Marettimo islet, camí cap a la Punta Troia, 37°58'24,4"N 12°4'05,0"E, 26 m, fissures i terreny rocós calcari, 02–VI–2012, *Galbany 2328 & Garcia-Jacas* (BC 950779).

127

128

129

130

Helichrysum fontanesii Cambess. / ***Helichrysum pendulum*** (C. Presl) C. Presl

131

132

ALGERIA: Oran, in siccis Djebel Sartro, 27–V–1883, *Debeaux s.n.* (MA 125276); Oran, rochers escarpés sous le foret de Santa Cruz, 10–VI–1884, *Debeaux s.n.* (MPU); le Gouraya de Bougie, sur les rochers calcaires, 600 m, VI–1896, *Reverchon 56* (MA 125271; P; W); Oran, broussailles, III–1920, *Alleizette s.n.* (MA 125275); environs de Lauriers–Roses, pelouses rocailleuses, 400 m, 25–IV–1934, *Faure s.n.* (G; MA 125272); *Djurjura, Col de Tirourda, 36°28'29"N 4°21'13"E, 1595 m, 10–V–2012,

133

134

135

136

137 *Aldasoro 20093* (BC 950778); entre Theniet El Had y Youssoufia Wilaya Tissemsilt, 35°53'48"N
138 2°3'20"E, 986 m, 08–V–2012, *Aldasoro 20079* (BC 950776); Djurdjura, Col de Tirourda, 36°28'29"N
139 4°21'13"E, *Aldasoro 20003* (BC 950777); Cap Carbon, Bejaia, 36°46'12"N 5°06'15"E, 100 m, calcareous
140 maritime cliff (N exposure), 18–III–2007, *Vela 2* (BC 950775); Bejaia, Pic des Singes (col), 36°46'10"N
141 5°05'43"E, 400 m, calcareous-dolomitic rocks (summital exposure), 02–VII–2008, *Vela 4* (BC 950774);
142 Oran, route de Santa Cruz, falaises N, 35°42'39"N 0°39'54"W, 250 m, calcareous-dolomitic rocks (N
143 exposure), 16–III–2008, *Vela 5* (BC 950773); Djurdjura, Azrou n'Tohor, 36°29'19"N 4°23'18"E, 1800 m,
144 calcareous-dolomitic rocks (summital exposure), 25–VI–2011, *Vela 9* (BC 950772).

145 **MOROCCO:** Montis Kalaa, hab. in saxosis calc., 1000 m, 29–VI–1928, *Font Quer 396* (125256);
146 just above El-Ksiba along road to Imilchil, 32°31'N 6°01'W, 29S 778392 3602285, 1000 m, 5–VII–1997,
147 *Jury & al.* 17457 (MA 616389); *Beni-Mellal, El-Ksiba, marges al llarg de la carretera cap a Imilchil des
148 d'El-Ksiba, 32°32'04,4"N 6°00'54,3"W, 1240 m, marge pedregós de la carretera i fissures en paret de roca
149 calcària, 03–VI–2011, *Galbany 2220 & al.* (BC 950771).

150 **SPAIN: Balearic Islands: Cabrera:** *Imperialet, 39°07'42,09"N 2°57'23,87"E, 25–VI–2012, *Sáez*
151 *7331* (BC 950769). **Ibiza:** in parva insula Vedranell dicta, in rupestribus calcareis, 20 m, 7–V–1920, *Font*
152 *Quer s.n.* (BC 30843); Cala Aubarca, in rupestribus calc., 70 m, 11–V–1920, *Font Quer s.n.* (BC 30842);
153 Sta. Inés, peñas marítimas, 22–V–1950, *Palau Ferrer 241* (BC 112795); Cala Aubarca, al penya-segat, 1–
154 VI–1981, *Cardona s.n. & al.* (BC 644521); Cala ses Balandres, V–1997, *Salvat s.n.* (BCN 26202);
155 Cingles des Racó, 8–V–1997, *Sáez s.n.* (BCN 20735); *Santa Agnès de Corona, camí de baixada cap a
156 Cala Aubarca, 39°03'41,5"N 1°22'40,5"E, 86 m, brolla de *Rosmarinus officinalis*, *Cistus albidus*, *Thymbra*
157 *capitata*, *Juniperus phoenicea*, etc. sobre sòl pedregós calcari, 18–VI–2011, *Galbany 2244 & Arrabal*
158 (BC 950767); Santa Agnès de Corona, camí cap a Cala Aubarca, 39°03'28,7"N 1°22'50,1"E, 188 m,
159 pineda de *Pinus halepensis* i brolla de *Rosmarinus officinalis*, *Erica multiflora*, *Juniperus phoenicea*,
160 *Pistacia lentiscus*, etc. sobre sòl calcari, 18–VI–2011, *Galbany 2242 & Arrabal* (BC 950766); afores de
161 St. Josep, sortint cap a Cala d'Hort, marge esquerre de la carretera, 38°55'21,5"N 1°17'14,4"E, 183 m,
162 brolla, 18–VI–2011, *Galbany 2253 & Arrabal* (BC 950765); carretera entre St. Josep i Cala d'Hort, molt a
163 prop de Cala d'Hort, marge de la carretera, 38°55'21,5"N 1°17'14,4"E, 109 m, brolla, 18–VI–2011,
164 *Galbany 2252 & Arrabal* (BC 950764); *poc abans d'arribar a Cala Xarraca des de St. Miquel (des del
165 SW), vora de la carretera, 39°05'37,8"N 1°29'57"E, 41 m, brolla, 18–VI–2011, *Galbany 2245 & Arrabal*
166 (BC 950763); *Santa Agnès de Corona, baixant cap a Cala Ses Balandres, 39°02'49,6"N 1°19'27,8"E, 14–
167 175 m, vessant rocós i fissures de roca calcària amb *Scabiosa cretica*, *Thymus richardii*, etc., 19–VI–
168 2011, *Galbany 2256 & Arrabal* (BC 950762); *Vedranell, 38°52'07,19"N 1°12'30,20"E, *Sáez 7157* (BC
169 950761; BC 950760); *Es Vedrà, 38°52'01,68"N 1°11'55,21"E, *Sáez 7150* (BC 950759). **Majorca:** Sa
170 Costera, camí de Sóller a Cala Tuent, [39°46'N 2°44'E], fissures de roques, 17–V–1932, *Marcos s.n.* (BC
171 30845); Sa Costera, camí de Sóller a Cala Tuent, [39°46'N 2°44'E], fissures de roques, 17–V–1932,
172 *Marcos s.n.* (BC 30845); tunel de Formentor, pont vora l'escala, *Hippocrepidetum balearicae*, 9–V–1974,
173 *Cardona s.n. & Masalles* (BC 616936); entre Escorca i es Gorg Blau, fissures de roques calcàries vora la
174 carretera, 21–VI–2001, *Galbany & Sáez s.n.* (BCN 20722).

175
176 *Helichrysum hyblaenum* Brullo / *Helichrysum pendulum* (C. Presl) C. Presl

177 **ITALY: Sicily:** *entre Avola i Avola Vecchia, 4–5 km, 36°55'17,11"N 15°08'30,75"E, talussos de
178 pedra de la carretera, mirant al N, 26–V–2012, *Susanna 2771 & Garcia-Jacas* (BC 950758); *entre
179 Modica i Ragusa, per la carretera antiga, a 3 km de Modica, 36°53'39,28"N 14°45'02,91"E, 27–V–2012,
180 *Susanna 2772 & Garcia* (BC 950755).

181
182 *Helichrysum melitense* (Pignatti) Brullo, Lanfr., Pavone & Ronsisv. / *Helichrysum melitense* (Pignatti)
183 Brullo, Lanfr., Pavone & Ronsisv.

184 **MALTA: Gozo:** *San Lawrenz, aproximadament 1 km al nord de l'Inland sea, part superior dels
185 penya-segats litorals, 36°03'46,9"N 14°11'27,1"E, 94 m, penya-segats litorals de roca calcària, *Galbany*
186 *2263 & Arrabal* (BC 950753); *Dwejra, Inland sea, 36°03'14,97"N 14°11'31,33"E, 15–30 m, penya-segats
187 i terrasses de roca calcària, *Galbany 2262 & Arrabal* (BC 950752); Dwejra, VI–2012, *Xiberras s.n.* (BC
188 950751).

189
190 *Helichrysum nebrodense* Heldr. / *Helichrysum pendulum* (C. Presl) C. Presl

191 **ITALY: Sicily:** ad rupes calcareas Nebrodum suprà Isnello, 18–VI–1855, *E. & A. Huet du*
192 *Pavillon s.n.* (MPU); *Muntanyes Madonie, Isnello, carretera de Cefalu a Isnello, a 1 km d'Isnello abans
193 del pont "mericola", 37°55'18,68"N 14°00'06,73"E, 470 m, 28–V–2012, *Susanna 2774 & Garcia-*
194 *Jacas* (BC 950821)

195

196 *Helichrysum panormitanum* Guss. / *Helichrysum pendulum* (C. Presl) C. Presl
197 **ITALY: Sicily:** Scala di Maceddu propè Panormum, ad rupes, 28–V–1855, *E. & A. Huet du*
198 *Pavillon s.n.* (MPU); Palermo, rochers calcaires, V–1879, *Todaro s.n.* (MPU); Palermo, in rupibus
199 calcareis, V–1885, *Todaro s.n.* (MA 125253; MPU); Sferro–Cavallo, in rupibus calcareis demissis, VI–
200 1887, *Lanza 355* (G); Palermo, in rupibus calcareis reg. infer et montanae, V–1896, *Ross 36* (FI);
201 Palermo, in rupibus, V–1898, *Ross s.n.* (BC 30850); Palermo, in rupibus calc., V–1902, *Ross s.n.* (BC
202 30848); Trapani, cabo S. Vito, Scopello, Riserva Naturale dello Zingaro, 60 m, penya-segats calcaris, 19–
203 IX–2001, *Molero & Rovira s.n.* (BCN 24036); *by the road from Castellammare del Golfo to Balata di
204 Baida (SS187), 0.5 km W port of Castellammare, 38°1'56"N 12°52'16"E, 200 m, calcareous rocks, 28–V–
205 2008, *Vilatersana 1161 & al.* (BC 950754); *NW de Palermo, Sferracavallo, vora de la badia, marges
206 rocosos de la carretera, 38°12'03,5"N 13°16'02,8"E, 10 m, marges rocosos Ca, 01–VI–2012, *Galbany*
207 *2321 & Garcia-Jacas* (BC 950756); *N de Palermo, Monte Pellegrino, pujant per la carretera que porta a
208 Sta. Rosalia, en els marges rocosos de la carretera, 38°09'23,0"N 13°22'02,6"E, 82 m, 01–VI–2012,
209 *Galbany 2322 & Garcia-Jacas* (BC 950757); *Bagheria, Capo Zafferano, passeig marítim que va cap al
210 far (Via del Faro), 38°06'40,4"N 13°32'22,0"E, 30 m, paret de roca Ca al marge mateix del passeig, molt
211 abundant, 01–VI–2012, *Galbany 2319 & Garcia-Jacas* (BC 950768); *San Vito lo Capo, carretera que
212 volta el Cap S. Vito, a la part E del Cap, prop de Torre dell'Impiso, 38°08'35,7"N 12°46'14,5"E, 179 m,
213 fissures de roca Ca i marges rocosos de la carretera, 02–VI–2012, *Galbany 2329 & Garcia-Jacas* (BC
214 950770); pista que va des de la Portella della Pàglia cap a la Pizzuta, a l'alçada d'una font que hi ha a la
215 pista que va a sortir cap a la Portella Ginestra, vessant sota la pista, 37°59'38,6"N 13°15'03,0"E, 1028 m,
216 fissures de roca Ca, 30–V–2012, *Galbany 2309 & Garcia-Jacas* (BC 950784); Palermo alla Pizzuta, ad
217 rupes calcareas montosis, VI, *Todaro s.n.* (MPU).

218
219 *Helichrysum pendulum* (C. Presl) C. Presl / *Helichrysum pendulum* (C. Presl) C. Presl
220 **ITALY: Sicily:** Polizzi Generosa, Parco della Madonie, Vallone Madonna degli Angeli, 37°51'N
221 14°01'E, 1300 m, talud rocoso, calizas, 2–VI–2000, *Herrero 915 & al.* (MA 646762); *Madonie, parco
222 regionale delle Madonie, crest of Mount Quacella, by the way to Vallone Madonna delle Angeli,
223 37°50'42"N 14°0'53"E, 1330 m, calcareous rocks, 27–V–2008, *Vilatersana 1154 & al.* (BC 950750).

224
225 *Helichrysum saxatile* Moris / *Helichrysum saxatile* Moris
226 **ITALY: Sardinia:** rupi del Mte. Scuiine presso Baunei, [40°02'N 9°40'E], 24–V–1895, *Martelli s.n.*
227 (MPU); Monti di Dorgali, 19–VI–1895, *Martelli s.n.* (FI; MPU); Prov. Nuoro, route Dorgali, P. Scala
228 Manna, ca. 500 m, rochers granitiques près de Cant. Noce Secca, 26–V–1983, *Charpin 17780 & al.* (G
229 235210); Mt. Scuiine, pr. Baunei fissures de roques calcàries, [40°02'N 9°40'E], 30–VI–2002, *Galbany &*
230 *Sáez s.n.* (BCN 24033); Mt. Scuiine, pr. Baunei, fissures de roques calcàries, 30–VI–2002, *Galbany &*
231 *Sáez s.n.* (BCN 20726); Mt. Scuiine, pr. Baunei, fissures de roques calcàries, 30–VI–2002, *Galbany &*
232 *Sáez s.n.* (BCN 25250); carretera entre Dorgali i Scala Manna, sobre roques granítiques, 30–VI–2002,
233 *Galbany & Sáez s.n.* (BCN 6119; BCN 25357; BCN 25358; BCN 25359); *entre Genna Silana i Urzulei,
234 carretera que surt de Genna Croce cap al S, 40°06'4,5"N 9°30'43,8"E, 885 m, fissures en parets verticals
235 de roca Ca, exp. NE, 13–VIII–2008, *Galbany 2082 & Arrabal* (BC 950786); *pr. Oliena, Sopramonte,
236 40°15'26,5"N 9°25'5,3"E, 39°48'30,06"N 9°29'52,01"E, 808 m, fissures en parets verticals de roca Ca, 14–
237 VIII–2008, *Galbany 2084 & Arrabal* (BC 950787); *Ulassai, 2012, *Carnicero 390 & Galbany* (BC
238 950788).

239
240 *Helichrysum valentinum* Rouy / *Helichrysum valentinum* Rouy
241 **SPAIN:** in Monte Montgó, latere septentrionale, 01–VI–1923, *Font Quer s.n.* (BC 30838); Monte
242 Montgó, 300 m, in rupestribus calcareis, 03–VI–1923, *Font Quer s.n.* (BC 30841; BC 30837); Moraira,
243 Cala de la Viuda, 31SBC58, sobre roques calcàries en penya-segat, 09–III–2001, *Galbany & Soler s.n.*
244 (BCN 23287; BCN 23268; BCN 23278; BCN 21307; BCN 21315; BCN 21314; BCN 23277; BCN
245 21302; BCN 23276; BCN 21303); Poble Nou de Benitatxell, sobre la platja de Moratx, 31SBC59, penya-
246 segat calcari, 09–III–2001, *Galbany & Soler s.n.* (BCN 23286; BCN 23288; BCN 23284; BCN 23289;
247 BCN 23281); Xàbia, Cap Negre, 31SBC59, sobre roques calcàries en penya-segat, 09–III–2001, *Galbany*
248 *& Soler s.n.* (BCN 21305; BCN 23280; BCN 21306; BCN 23279); *Marina Alta, Moraira, Barranc cap a
249 Cala Llebeig, part baixa del barranc, penya-segats prop del mar, 38°41'52,4"N 0°09'20,06"E, 30–50 m,
250 fissures de roca Ca, 22–III–2012, *Galbany 2284, 2285, 2286, 2287, 2288, 2289 & al.* (BC 950789; BC
251 950790; BC 950791; BC 950792; BC 950793; BC 950794).

252
253
254 **Other species from sect. *Stoechadina***
255

- 256 ***Helichrysum crassifolium* (L.) D. Don**
257 **SPAIN: Balearic Islands: Dragonera:** pr. Faro de Tramuntana, 39°36'N 2°20'E, 31SDD4383, 90
258 m, en roquedos litorales, 3–VI–1998, *Aedo s.n. & al.* (MA 619150). **Majorca:** Sóller, 10–1000 m,
259 rochers, V–VI–1910, *Bianor s.n.* (Pl. d'Espagne – F. Sennen n° 1087) (MA 125241); coll des Coloms,
260 supra Sóller, in rupestribus calc., 16–VI–1920, *Gros s.n.* (BC 30816; BC 128497); cordillera N, Puig de
261 Massanella, comú en las rendijas de los peñascos, 20–VI–1949, *Palau Ferrer 148* (BCN 25873);
262 Massanella, 1–VII–1951, *Cañigueral s.n.* (BC 118705); Font des Coloms, Coma de n'Arbona, 12–VII–
263 1986, *Orell fil s.n.* (BCN 25874); Talaia Moreia, 39°46'N 3°20'E, 31SEE3003, 420 m, en roquedos
264 calizos, 6–VI–1998, *Sáez 5020 et al.* (MA 619253). **Minorca:** Monte Toro, 180 m, grietas de peñas
265 calcáreas, 21–VI–1873, *Rodríguez s.n.* (BC 30815; BC 614789; MA 125243); Monte Toro, 3–VII–1936,
266 *Kennedy 26* (MA 125238); Mercadal, subiendo al M. Toro, 31SEE9526, 250 m, peñascos calizos, 23–VI–
267 1951, *P. Montserrat s.n.* (BCN 25872).
268
269 ***Helichrysum heldreichii* Boiss.**
270 **GREECE: Crete:** distr. Sphakia, Levka Ori, in fissures rupium calc. faucium inter Samaria et
271 Rumeli, ca. 200–300 m, 13–VI–1942, *Rechinger fil. 13792* (G); Nomos Chania, Sfakia, unterer Abschnitt
272 der Aradena-Schlucht (Aradena-Faragi), W von Loutro, 5–200 m, felsfluren, 15–V–1998, *Hörandl 8600*
273 & *Hadaček* (W 1999-4793).
274
275 ***Helichrysum italicum* (Roth) G. Don subsp. *italicum***
276 **CROATIA:** Istria, in arenosis ad Polam, [Pula: 44°53'N 13°51'E], 20 m, solo calcareo, *s.d.*,
277 *Neugebauer s.n.* (BC 30988).
278 **CYPRUS:** Mont Troodos, 5000–6400' [1500–1950 m], 20–VII–1912, *Haradjian 527* (G);
279 Kokkinovonno [*sic*], 2900' [884 m], 06–VII–1937, *Kennedy 959* (G); a 10 km abans d'arribar al poble de
280 Troodos des del S, 34°53'32,8"N 32°51'46,2"E, 1230 m, marges assolellats de la carretera, clarianes de
281 pinedes, 31–VII–2008, *Galbany 2036 & al.* (BC 948594); entre Kakopetria i Agios Nikolaos, molt aprop
282 de Kakopetria, 34°59'2,6"N 32°53'59,3"E, 744 m, marges rocosos de la carretera, 31–VII–2008, *Galbany*
283 *2038 & al.* (BC 948593); a 2 km al S de Kampos, 35°1'10,4"N 32°43'32,6"E, 862 m, marge descobert de
284 la carretera, 01–VIII–2008, *Galbany 2042 & al.* (BC 949110).
285 **FRANCE: Corsica:** in collibus siccis Corsica, regione infer Bastia, 10–VII–1868, *Debeaux s.n.*
286 (BC 30896); Calvi, pointe de la Revellata, 10 m, pelouse sublittorale sur sol granitique, sur la côte N de la
287 pointe, [42°34'N 8°45'E], 22–VII–1976, *Lambinon 76/co/546 & Duvigneaud* (BC 629912); Haute Corse,
288 Barbaggiu, Bocca di Teghime, 530 m, herbazales subnitrofilos, 5–VIII–1996, *Serra 4609 & Bort* (MA
289 623431); carretera D48 que va de Sartène a Tizzano, 41°32'23"N 8°51'49,9"E, 34 m, marge de carretera
290 saulonós, , 07–VIII–2008, *Galbany 2063 & Arrabal* (BC 948733); carretera D48 que va de Sartène a
291 Tizzano, 41°32'47,2"N 8° 53'0,5"E, 42 m, marge de la carretera, , 07–VIII–2008, *Galbany 2064 & Arrabal*
292 (BC 948732); aprox. 1 km abans d'arribar al Col de Bavella des de Zonza, 41°47'32,4"N 9°13'18,8"E,
293 1192 m, clariana de pineda, sòl rocós Si, , 08–VIII–2008, *Galbany 2065 & Arrabal* (BC 948730); voltants
294 de Monticello a 1 km anant cap a Ficajola, 42°36'59,2" N 8°58'15,4"E, 198 m, vessant rocós, , 09–VIII–
295 2008, *Galbany 2069 & Arrabal* (BC 948728); voltants de Bigorno a uns 500 m cap a Lento, 42°31'52,8"
296 N 9°17'45,7"E, 661 m, vessant rocós, , 10–VIII–2008, *Galbany 2072 & Arrabal* (BC 948725); Corti, Vall
297 de Restonica a uns 500 m abans d'arribar al pàrquing Bergeries, 42°14'22"N 9°2'9,2"E, 1300 m, vessant
298 rocós, , 11–VIII–2008, *Galbany 2073 & Arrabal* (BC 948724); voltants de Figari, aprox. a 1 km de Figari
299 per la carretera que va a l'aeroport, 41°30'1,5"N 9°6'57"E, 23 m, marges de la carretera, clarianes de
300 màquia, , 12–VIII–2008, *Galbany 2074 & Arrabal* (BC 948706).
301 **GREECE: Ikaria:** Ikaria, 2–VIII–1887, *Major 934* (G). **Naxos:** afores de Cora, 37°05'34,9"N 25°
302 22'23,9' E, 1–2 m, dunes marítimes, , 20–VII–2008, *Galbany 2001 & al.* (BC 948659); Mont Zeus, a prop
303 de la font, al final de la carretera que puja cap al cim des de prop de Filoti, 37°02'13,8"N 25°29'33,4"E,
304 499 m, phrygana, , 20–VII–2008, *Galbany 2003 & al.* (BC 948656). **Syros:** Syros, V–1871, *Orphanides*
305 *1144* (G).
306 **ITALY:** Rapolano, près Sienne, lieux incultes arides, VIII–1873, *Sommier s.n.* (BC 30886);
307 Massa, Massa e Carrara, 7–VII–1886, [illeg.] *s.n.* (BC 30902); incontro Firenze, luoghi aridi Sasfosi,
308 1902, *Tani s.n.* (FI); Vesuvio, 200–300 m, 20–VI–1912, *Pellanda s.n.* (BC 30997); Taranto, Apulia
309 Tarentum, loco dicto Gravina di Leucaspide, 30 m, in alveo glareoso, rarissime inundato, [40°28'N
310 17°14'E], 14–VII–1914, *Lacaita s.n.* (BC 30990); Calabria, Sila, in ditone Longobucco, loco Ponte di
311 Cecita dicto, 1100 m, solo granítico, [39°27'N 16°37'E], 3–VIII–1918, *Fiori s.n.* (BC 30991); Monterosso
312 al Mare, La Spezia, [44°09' N 9°40'E], 09.06.1927, [illeg.] *s.n.* (BC 75937); Potenza, in glareosis prope
313 flumen Basento, 1934, *Gavioli s.n.* (FI); Toscana, Alpi Apuane, Retignano, 16–VIII–1942, *Corradi s.n.*
314 (MA 186294); Toscana, Montepulciano, colline argillose della Val d'Orcia, 300–600 m, [43°05'N

315 11°47'E], 5–VIII–1958, *Fabbri s.n.* (FI); Elba, Marciana, 550 m, [42°47'N 10°10'E], 22–VI–1968,
316 *Geissler 6252* (G 217797); Pianosa, isola di Pianosa, dal paese a Cala S. Giovanni, 21–V–1998, *Baldini*
317 *s.n.* (FI).

318 **MOROCCO:** Guelb-er-Rahal, 1500–2000 m, in glareosis torrentum et in pascuis lapidosis
319 calcareis inter querceta, 25–VI–1927, *Maire s.n.* (MPU); Demnate, au dessus d'Imi–n–Ifri, 25–VII–1941,
320 *Lhermite 14* (MPU–MAIRE).

321 **SERBIA AND MONTENEGRO:** Budva, in autocampo Cruena Glavica in proximitate oppiduli
322 Sveti Stefan, 50–100 m, sparso in fruticetis sempervirentibus et in saxosis regionis mediterraneae
323 inferioris, 07–VII–1982, *Černoch 39169* (BC 657165; G 293376).

324
325 *Helichrysum italicum* (Roth) G. Don subsp. *siculum* (Jord. & Fourr.) Galbany, L. Sáez & Benedí

326 **ITALY: Sicily:** Catania, Mt. Etna, prop de Nicolosi, pioner sobre terreny volcànic, 16–IX–2001,
327 *Galbany s.n.* (BCN 34262; BCN 24030; BCN 25248); P. R. Nebrodi, pr. Galati Mamertino, Catafurcu,
328 800 m, brolles calcícoles, 21–IX–2001, *Galbany s.n.* (BCN 6116; BCN 24031; BCN 25234).

329
330 *Helichrysum italicum* (Roth) G. Don subsp. *tyrrhenicum* (Bacch., Brullo & Giusso) Herrando, J.M.
331 Blanco, L. Sáez & Galbany

332 **FRANCE: Corsica:** Bonifacio, les plages, 12–VII–1880, *Reverchon 305* (MPU); Bonifacio, au
333 bord de la falaise, à côté (nord-nord-ouest) du sémaphore de Pertusato, 105 m, sommet de la falaise
334 calcaire, sur sol sableux, enbordure d'une formation de garrigue très basse, 18–V–1983, *Thiébaud 4464 &*
335 *Roguet* (BC 657164); olfe de Santa Manza, plage de Maora, groupement pionnier, sur plage de sable
336 grossier, avec *Thymelaea hirsuta*, *Senecio cineraria*, *Jasione montana*, *Corrigiola telephiiifolia*, *Lagurus*
337 *ovatus*..., 2–VI–1997, *Lambinon 97/Co/117 & Van Den Sande* (MA 595752); Bonifacio, Cabo Pertusato,
338 cra. a Playa Piantarella, maquia litoral muy venteado, 6–VI–2002, *Nieto 4506 & Fuertes* (BCN 20713);
339 Porto Pozzo, playa de Porto Liscia, arenal estabilizado en lentiscar – sabinar, 7–VI–2002, *Nieto 4529 &*
340 *Fuertes* (BCN 20718); La Tonnara, 41°25'35,8"N 9°6'51,8"E, 41 m, clarianes de màquia de *Pistacia*
341 *lentiscus* i *Juniperus phoenicea*, 06–VIII–2008, *Galbany 2050 & Arrabal* (BC 948624); Golfu di
342 Sant'Amanza, per la carretera de Gurgazu cap al NE, 41°24'55,3"N 9°14'11,4"E, 3 m, clarianes de màquia
343 de *Pistacia lentiscus* i *Juniperus phoenicea*, 06–VIII–2008, *Galbany 2053 & Arrabal* (BC 948628); platja
344 dels voltants de Roccapina, que no té carretera per accedir-hi, 41°29'30,5"N 8°57'41,4"E, 3 m, roques de la
345 platja, 07–VIII–2008, *Galbany 2058 & Arrabal* (BC 948626); Cap Corse, Barcaggio, 43°0' 27,9"N
346 9°23'59,1"E, 13 m, roques marítimes, 10–VIII–2008, *Galbany 2070 & Arrabal* (BC 948625); Ile Lavezzi,
347 41°20'14"N 9°15'35,7"E, 4 m, entre roques, 12–VIII–2008, *Galbany 2075 & Arrabal* (BC 948623).

348 **ITALY: Sardinia:** Santa Teresa Gallura, plages calcaires, 08–VII–1881, *Reverchon 96* (MPU);
349 sollanas presso Capo Carbonara, 5–III–1885, *Major 238* (FI); Isola Maddalena, VI–1893, *Vaccari s.n.*
350 (BC 30993); in aridis sterilibus prope Sassari, 1895, *Nicotra 3529* (G); San Giovanni Suegiu [*sic*], sorrals
351 platja, [39°06'N 8°32' E], 15–IV–1973, *Folch et al. s.n.* (BC 656457); Carloforte, La Punta, extrémité
352 nord de l'île de San Pietro, 10 m, lieux arides pierreux, 31–V–1988, *Marchi & al. s.n.* (G 397480); entre
353 Porto Torres i Castelsardo, dunes de la platja Platamone, [40°54'N 8°43'E], 29–VI–2002, *Galbany & Sáez*
354 *s.n.* (BCN 20738; BCN 25235); Tempio, per carretera d'ascensió al Mt. Limbara, a uns 900 m, 30–VI–
355 2002, *Galbany & Sáez s.n.* (BCN 20578, 2 specimens); Monte Scuine, pr. Baunei, en vessant rocós Ca.,
356 30–VI–2002, *Galbany & Sáez s.n.* (BCN 20576); Capo Carbonara, 1–VII–2002, *Galbany & Sáez s.n.*
357 (BCN 20709); Capo Falcone, 3–VI–2003, *Molero & López s.n.* (BCN 20708); NW Oristano, Capo Manu,
358 entre el cabo y Su Pallesu, 7–VI–2002, *Nieto & Fuertes s.n.* (BCN 20711); platja de Porto Liscia,
359 41°11'30,1"N 9°17'46,3"E, 1 m, dunes marítimes, 13–VIII–2008, *Galbany 2076 & Arrabal* (BC 948615).

360 **SPAIN: Balearic Islands: Dragonera:** 27–VII–1991, *Mus s.n.* (herb. Universitat Illes Balears, 4
361 specimens); pujant a Sa Pòpia, en màquia oberta, sobre terreny rocós, 20–VI–2001, *Galbany & Sáez s.n.*
362 (BCN 20717). **Majorca:** Cap des Llamp, 3–VII–1991, *Mus s.n.* (herb. Universitat Illes Balears); Port
363 d'Andratx, Cala Moragues, 3–VII–1991, *Mus s.n.* (herb. Universitat Illes Balears, 4 specimens); Penyes
364 Rotges, 3–VII–1991, *Mus s.n.* (herb. Universitat Illes Balears, 5 specimens); S'Hort de Sa Cova,
365 Valdemossa, 31SDD6295, 10 m, matollars litorals sobre gresos silícis del Bundsandstein i conglomerats
366 quaternaris, 01–VII–2013, *Martínez* (BC 949116; BC 949115; BC 948602; BC 948611; BC 948614).

367
368 *Helichrysum litoreum* Guss.

369 **ITALY:** in monte S. Angelo prope Castellamare [Castellammare di Stabia: 40°42'N 14°30'E], solo
370 calcareo, 1–VII–1873, *Stroblz s.n.* (G); M. Vesuvio, in aridis apricis, 20–VI–1912, *Pellanda s.n.* (MA
371 125197); Lazio, Gaeta, Latina, rochers calcaires le long de la route Gaeta–Terracina, entre Torre Viola et
372 Torre San Agostino, 2–VI–1976, *Ricceri s.n. & Steinberg* (G; MA 241550); env. de Naples, *s.d.*, *Reynier*
373 *s.n.* (G). **Capri:** Capri, 1867, *Kesselmeier s.n.* (G). **Ischia:** Scogli di S. Anna, VI–1907, *Guadagno s.n.*

374 (MA 125199); an felsen am Gipfel des Monte Epomeo in etwa 780 m, 27–VII–1952, *Höpflinger s.n.* (BC
375 122784); Ischia, *s.d.*, *Gussone s.n.* (G).

376
377 ***Helichrysum massanellum*** Herrando, J. M. Blanco, L. Sáez & Galbany

378 **SPAIN: Balearic Islands: Majorca:** Massanella, 1–VII–1951, *Cañigueral s.n.* (BC 118706); Puig
379 de Massanella, supra Coma Freda, 1200 m, exp. N, in *Teucrieto subspinosi*, 12–VII–1956, A. & O. de
380 *Bolòs s.n.* (BC 137143); Massanella, 1974, *Lesonef s.n.* (MA 620096); Puig de Massanella, 1200 m,
381 matorrales sobre calizas, 25–IX–1986, *Romo 3562* (BC 659149); Massanella, 02–VIII–1991, *Mus & al.*
382 *s.n.* (herb. Universitat Illes Balears, 5 specimens); Coll de Ses Cases de Neu, c. Coll des Telègraf, 1205 m,
383 Ca., 21–VI–2001, *Galbany & Sáez s.n.* (BCN 6115; BCN 20580, BC); c. Coll des Telègraf, 990 m, Ca.,
384 21–VI–2001, *Galbany & Sáez s.n.* (BCN 20714; BCN 25228); Coma des Nevaters, c. Coll des Telègraf,
385 1100 m, talussos dolomítics, VIII–2001, *Sáez 5739* (BCN 20710); Coll des Prat, VII–2009, *Sáez s.n.* (BC
386 949117).

387
388 ***Helichrysum serotinum*** (DC.) Boiss. subsp. *picardii* (Boiss. & Reut.) Galbany, L. Sáez & Benedí

389 **PORTUGAL:** [Braga] arredores de Esposende [41°32'N 8°46'W], VIII–1883, *Segueira s.n.* (COI);
390 arredores do Porto, Boa Nova, VIII–1884, *Casimiro Barbosa s.n.* (COI); [Coimbra] Mira [40°26'N
391 8°43'W], pinhar, VII–1893, *Ferreira s.n.* (COI); arred. de Faro, caminhos, VII–1915, *Palhinha & Mendez*
392 *s.n.* (LISU); [Leiria] Pinhal de Leiria, areias marítimas, IV–1917, *Felgueiras s.n.* (COI); Aveiro, Costa
393 Nova, 15–VIII–1948, *Fontes 2656 & al.* (MA 241546); [Aveiro] Ovar [40°52'N 8°37'W], Furadouro,
394 areais, 16–VIII–1965, *Costa s.n.* (MA 537058); Monte Clérigo, nas dunas, 19–IV–1968, III Reuniao de
395 Bot. Peninsular – COI n° 10322 (COI); Península de Troia, dunas marítimas próx. da Malha da Costa, 27–
396 VI–1971, *Béliz 11212 & al.* (MA 241547); [Setúbal] Costa da Caparica [38°39'N 9°14'W], Mata do Rei,
397 5–IX–1972, Plantas obtidas por sementeira no J. Botánico de Coimbra 5834 (COI); [Leiria] Obidos, Praia
398 do Bom Sucesso, dunas marítimas, 13–XII–1974, *Béliz 12479 & Guerra* (MA 241548); Sines, junto à
399 praia de Monte Velho, na transição da duna primária para a secundária, uma das sub–dominantes das
400 dunas, 7–VIII–1979, *Barbosa 13256* (LISU); Barlavento, Silves [37°12'N 8°26'W], Pira, Morgado dos
401 Relvas, dunas internadas com *Ononis natrix ramossissima*, *Crucianella maritima*, *Anthemis maritima*, 29–
402 VII–1982, *Pedro & Costa 23892* (MA 410377); [Lisboa] Colares, Cabo da Roca, Carta Militar, 415,
403 formação de encosta com *Carpobrotus edulis*, *Daphne gnidium*, *Ulex* sp., *Juniperus phoenicea*, etc, 23–
404 VI–1983, *Correia & Cardoso 5486* (LISU).

405 **SPAIN:** Finisterre [Fisterra: 42°54'N 9°15'W], arenales playa, 12–VII–1928, *Cuatrecasas 623* (BC
406 78322); Almonte, Doñana, Cota 32, en las dunas móviles, 15–X–1976, *Valdés 1314 & al.* (MA 241319);
407 entre La Palma del Condado [37°23'N 6°33'W] y Valverde del Camino, suelo arenoso ácido, mezclado
408 con cantos rodados de origen aluvial, 20–VI–1978, *Talavera & Valdés s.n.* (SEV 58302); Almonte,
409 Matalascañas, dunas fijas, 20–VIII–1978, *Valdés s.n.* (SEV 37003); Mazagón, bajada a la Playa del Loro,
410 18–VIII–1979, *Valdés s.n.* (SEV 57853); Barbate, 16–VII–1982, *Arroyo s.n.* (SEV 118874); Sanxenxo,
411 praia de Montalvo, 29TNG1294, 5 m, en coms. de *Festuco–Crucianelletum maritimae* de arenales
412 costeros, 2–VIII–1983, *Silva–Pando 448* (SEV 122975); Sanxenxo, praia da Lanzada, 29TNG1099, en
413 dunas secundarias, 18–VIII–1983, *García Martínez s.n.* (MA 411074; SEV 111313); Tarifa, Punta
414 Camarinal, 30–VII–1988, *Pujadas s.n.* (COA 32156); Augadoce, playa de Area, Vivero, 29TPJ1438, 8–
415 IV–1989, dunas, *Aedo s.n.* (MA 598688); Puerto Sta. María, la Marisma del Toruño, 27–VII–1993,
416 *Roldán s.n.* (COA 32157).

417
418 ***Helichrysum serotinum*** (DC.) Boiss. subsp. *serotinum*

419 **FRANCE:** Hérault, Mont Caroux, éboulis du versant sud, 25–VIII–1931, *Blanchet s.n.* (BC
420 30979).

421 **PORTUGAL:** Trás–os–Montes, Mogadouro [41°21'N 6°42'W], 19–VII–1974, *Matos 13092*
422 (COI).

423 **SPAIN:** Banyeres [Banyeres de Mariola], 800 m, garrigues, 21–VII–1919, *Font Quer s.n.* (BC
424 30973); Benidorm, en el *Thymo–Siderition*, 2–VIII–1959, *Rigual s.n.* (MA 368902); entre Benitachell y el
425 B. del Yufimo, en *Thymo–Siderition*, 22–VI–1960, *Rigual s.n.* (MA 369900); Puerto de la Cabrera, 1080
426 m, granitos, 15–VII–1968, *Silvestre 2567/68* (SEV 57597); El Escorial, 15–VI–1972, *Benítez s.n.* (COA
427 17694); Villanueva de Alcorón [40°41'N 2°14'W], 15–VIII–1973, *Hernández s.n.* (COA 17692);
428 Mojados [41°27'N 4°39'W], 29–VII–1978, *Burgaz s.n.* (MA 411350); Vinaderos, Pinar de Vinaderos,
429 UL54, 17–VII–1982, *Pérez Sanz s.n.* (MGC 14617); Sierra de los Filabres, estribaciones del Calar Alto
430 [Calar Alta: 37°13'N 2°33'W], 2080 m, sobre esquistos, 7–VIII–1982, *López 3472* (MA 442085);
431 Quesada, alrededores del Puerto de Tíscar, 30SVG9782, 1140 m, desmonte de pista, 27–VII–1983,
432 *Soriano 1846* (MA 462257); Benaoján, Sierra de Juan Diego, TF9665, 1300 m, 3–VIII–1983, *Aparicio &*
433 *Rowe s.n.* (MA 461711); Meano, muy raro en taludes junto a la carretera, 30TWN4316, 830 m, 12–IX–

434 1986, *Alejandro s. n.* (MA 365853); Sierra Ronda, Igualeja, El Robledal, UF1656, 1250 m, rocas
435 soleadas, 26–VII–1987, *Latorre s.n.* (MGC 22916); Sierra Nevada, Monachil, Dornajo, 30SVG6008,
436 2000 m, en laderas pedregosas de la solana, calizas, 14–VIII–1988, *Gil Zúñiga & Alejandro 6388* (MA
437 467852); entre Puebla de Don Fadrique y Santiago de la Espada, c. de las Vidrieras, 30SWH4113, 1500
438 m, 20–IX–1990, *García Martín & Silvestre s.n.* (MA 485526); Sierra Almenara, próx. a Cerro Talayón
439 [37°34'N 1°32'W], 650 m, 7–VII–1992, *Prados & al. s. n.* (COA 17700); Hoya de Baza, entre Cuevas del
440 Campo [37°36'N 2°55'W] y Pozo Alcón, sobre margas yesosas, 11–VII–2001, *Sáez 5721* (BCN 20878);
441 Sierra de Cazorla, sobre el pueblo de Cazorla, replanos y fisuras de rocas calizas, 11–VII–2001, *Sáez*
442 *5722* (BCN 20879); Piera [41°31'N 1°45'E], cap el Forn, Can Aguilera, CG9402, 540 m, esquistos àrids,
443 antiga vinya abandonada, 28–VII–2001, *Quadrada s.n.* (BCN 20875); Ports de Beseit, Barranc de la
444 Galera, UTM BF7511, 350 m, brolla oberta, 28–VII–2001, *Blanco, Galbany & Lanau s.n.* (BCN 20877);
445 l'Espluga de Francolí, muntanyes de Prades, ermita de Sant Miquel CF4283, VII–2001, *Galbany s.n.*
446 (BCN 20871); entre Nerpio i Elche de la Sierra [38°27'N 2°02'W], a uns 20 Km de la darrera localitat,
447 11–VII–2002, *Rivera & Vallès s.n.* (BCN 20876). **Ibiza:** versus Sta. Eulàlia [38°59'N 1°34'E], 2–VII–
448 1920, *Gros s.n.* (BC 30960); Cala Aubarca, 27–VII–1978, *Pujadas & al. s.n.* (COA 9721).
449

450 ***Helichrysum stoechas* (L.) Moench**

451 **CYPRUS:** Cape Greco [Cape Greko] (Larnaca), 10–20 m, calcaires coralliens du Miocène
452 inférieur et sables, 12–IV–1991, *Alziar & al. s.n.* (4 Iter Mediterraneum of OPTIMA 0159) (MA 495870);
453 près de Droushia et Inia, à l'ouest du Mont Lara (Paphos), 550 m, gros rochers de grès du Trias et
454 pâturages, lande à *Cistus monspeliensis* repoussée après incendie, 24–IV–1991, *Alziar 1389 & al.* (MA
455 496020); Distr. Limassol, div. géobot. n° 3, Akrotiri Bay, côte E de la péninsule d'Akrotiri (au SW de
456 Limassol), plaine littorale près de la piste d'aviation, levée de terre colonisée par la garrigue, 13–IV–
457 1992, *Lambinon 92/Cy/289 & Van Den Sande* (MA 526405).

458 **GREECE:** Attique, collines sèches, près Athènes, 28–V–1890, *Heldreich 2498* (MA 125248);
459 Lasithion, Agios Nikólaos, colline à gauche de la route Agios Nikólaos (Kristá, à quelques centaines de
460 metres avant le croisement avec l'autoroute Iráklion / Sitia, [35°12'N 25°43'E], 23–V–1983, *Van*
461 *Buggenhout s.n.* (Société pour l'échange des plantes vasculaires 11787) (MA 388429).

462 **ITALY:** Sicily, Palermo, in collibus calc., VII–1903, *Ross s.n.* (MA 125249); Viareggio, 8–VI–
463 1941, *Corradi s.n.* (FI); Lazio, Pineta di Castel Fusano, 14–VII–1958, *Lanza s.n.* (FI).

464 **LYBIA:** Cirenaica, Gerdes el–Abid, U. el–Benia, 29–III–1933, *Pampanini 9045* (MA 186295);
465 Tripolitania, 19–20 km W of Homs, 200 ft. [70 m], on hard bare ground on hills, assoc. of Rosemary and
466 *Genista*, 27–III–1939, *Sandwith 2044* (K); Cyrenaica, Wadi am el Atrún, by coast between Derna
467 [Darnah] and Ras–el–Hilal [Ra's al Hilál], on bare rock in gully, 7–IV–1939, *Sandwith 2448* (K);
468 Cyrenaica, 1500 ft. [457 m], clayloam, flat SE, 10–IV–1958, *Park 348* (K); Cyrenaica, el Bakur,
469 Benghazi [Banghāzī], 17–IV–1961, *Karamanli 920* (K).

470 **MOROCCO:** Hidum, dunes sur coteau calcaire, V–1930, *Mauricio s.n.* (Plantes d'Espagne –
471 Sennen 7606) (MA 125258); Hidum, coteaux sablonneux, 10–V–1931, *Sennen & Mauricio s.n.* (Plantes
472 d'Espagne – Sennen 7885) (BC 829530; G; MA 125259).

473 **PORTUGAL:** Estremadura [Lisboa] Venda do Pinheiro, Torres Vedras, [39°06'N 9°15'W], VI–
474 1881, *Daveau 112* (COI).

475 **SPAIN:** Cartagena, cercanías de la ciudad, [37°36'N 0°59'W], V–1902, *Ibáñez & al. s.n.* (MA
476 125109); Cabo de Palos, II/III–1964, *Bellot & Casaseca s.n.* (MA 199773); Calatayud, 14–VI–1969,
477 *Rivas Goday & Ladero Álvarez s.n.* (MGC 4473); Bahía de Jávea, terrazas litorales, 24–I–1977, *Rivas*
478 *Goday s.n.* (MGC 4322); Hifach, Calpe, 30–III–1977, *Hernández s.n.* (COA 9732); Aranjuez, Cerros de
479 Ontigola, 4–VI–1977, *Cabezudo & al. s.n.* (SEV 32877); El Saler, 8–V–1982, *Hernández & al. s.n.* (COA
480 9894); Km 4 de Hornachuelos, olivar, 8–VI–1983, *Pujadas s.n.* (COA 8238); Alcaraz, la Molata, 5–VII–
481 1985, *Pujadas & Hernández s.n.* (COA 32162); Punta del Sabinar, 25–III–1988, *Asensi & Díez s.n.*
482 (MGC 23130); Monte de Pego, 19–IV–1989, *Pujadas & al. s.n.* (COA 32163); Torre García, sobre arena,
483 2–V–1989, *Moreno Ruiz s.n.* (MGC 31552); Cabo Machichaco, 1–VIII–1990, *Pujadas & Poyato s.n.*
484 (COA 32174); Soma del Caballón de Cuenca, 720 m, 6–VI–1991, *Nieto & Pérez-Latorre s.n.* (MGC
485 35638); Silos, 25–VII–1991, *Pujadas & Poyato s.n.* (COA 32182); Almuñécar, Playa Cantarriján, Cerro
486 Gordo, 19–I–1992, *Pujadas & Poyato s.n.* (COA 32189); Biescas, gravas de río, 14–VII–1993, *Pujadas*
487 *s.n.* (COA 32173); Sta. Pola, pr. Casa de l'Albufera, YH1029, 2 m, 16–II–1996, *Serra s.n.* (MA 611842);
488 Sierra de Alhambilla, El Cigarrón, próx. a Cuevas de los Medinas, 18–IV–1996, *Hernández & al. s.n.*
489 (COA 28915); Alhaurín el Grande, Sierra de Mota, pasado el puerto de los pescadores hacia Alhaurín por
490 debajo del castillo, 300 m, ladera pedregosa, matorral, serpentinias, 21–V–1996, *Gil & al. s.n.* (MGC
491 45150); Cártama, Sierra de Cártama, UF5763, 23–VI–1996, *Velasco & al. s.n.* (MGC 41051); Moraira,
492 Cala de la Viuda, 31SBC58, en la canal, substrat calcari, 9–III–2001, *Galbany & Soler s.n.* (BCN 20995);
493 Moraira, Urbanització La Cumbre del Sol, 31SBC58, descampat, 9–III–2001, *Galbany & Soler s.n.* (BCN

494 21061); Xàbia, Cap Negre, 31SBC59, sobre roques calcàries en penya-segat, 9-III-2001, *Galbany &*
495 *Soler s.n.* (BCN 20990); Casarabonela, Sierra de la Robla, proximidades del arroyo del Tesorillo,
496 30SUF4072, 350 m, matorral, serpentinias, ladera S, 30-V-2002, *Nava & al. s.n.* (MGC 52215). **Balearic**
497 **Islands: Ibiza:** Bahía de San Antonio Abad, 1-V-1980, *Rivas Martínez & al. s.n.* (MA 422346); San
498 Juan, Sierra de la Mola, 6-VI-1981, *Devesa 2183/81 & al.* (SEV 64254). **Mallorca:** Cala Ratjada, 8-VI-
499 1981, *Devesa 2312/81 & al.* (SEV 64332); Palma de Mallorca, Porto Pi, 27-V-1986, *Pujadas s.n.* (COA
500 32198); Es Trench, Campos, 30-V-1986, *Pujadas s.n.* (COA 32204).

501
502

503 **Appendix S2.** Specimens included in the molecular analyses with voucher information and INSDC
504 (International Nucleotide Sequence Database Collaboration) accession numbers. In the case of ETS, all
505 specimens sequenced are listed. In the case of *rpl32-trnL* intergenic spacer, all specimens sequenced are
506 listed except for the *H. pendulum* complex, for which only one specimen per haplotype is listed. Newly
507 generated sequences are marked with an asterisk (*). For the taxa of the *Helichrysum pendulum* complex
508 previous taxonomic assignment and final taxonomic treatment are given separated by a /.

509

510 *Anaphalis margaritacea* (L.) Benth. & Hook.f.; Canada, West, *J.M. Blanco & E. Blanco s.n.* (BC
511 950748); *rpl32*: FN649352. *Helichrysum argyrosphaerum* DC.; South Africa, Free State Province,
512 *Koekemoer 3532* (BC 950749); *rpl32*: HG798154. *Helichrysum arvae* J.R.I.Wood; Yemen, ex Roy. Bot.
513 Gard. Kew (BCN 6103); *rpl32*: HG798156. *Helichrysum boissieri* Nyman / *Helichrysum pendulum* (C.
514 Presl) C. Presl; Gibraltar, Rock of Gibraltar, *Galbany 2191 & Arrabal* (BC 950783); ETS: *KY242942,
515 *KY242943, *KY242944, *KY242945, *KY242946; *rpl32*: *KY243019 (H10), *KY243020 (H11).
516 *Helichrysum citrispinum* Del. var. *citrispinum*; Ethiopia, Mount Choke, *Aldasoro 9952 & Alarcón* (BC);
517 *rpl32*: HG798171. *Helichrysum crassifolium* (L.) D. Don; Spain, Balearic Islands, Majorca, *Galbany &*
518 *Sáez s.n.* (BCN 6117); ETS: FJ211540; *rpl32*: HG798177. *Helichrysum devium* J. Y. Johnson; Portugal,
519 Madeira island, *Jardim s.n.* (MADJ); *rpl32*: HG798183. *Helichrysum errerae* Tineo var. *errerae* /
520 *Helichrysum errerae* Tineo; Italy, Sicily, Pantelleria island, close to Pantelleria village, *Galbany 2324*
521 (BC 950782); ETS: *KY242883, *KY242884, *KY242885, *KY242886, *KY242887. *Helichrysum*
522 *errerae* Tineo var. *errerae* / *Helichrysum errerae* Tineo; Italy, Sicily, Pantelleria island, between Scauri
523 and Balata d. Turchi, *Galbany 2325* (BC 950780); ETS: *KY242888, *KY242889, *KY242890,
524 *KY242891, *KY242892, *KY242893. *Helichrysum errerae* Tineo var. *errerae* / *Helichrysum errerae*
525 Tineo; Italy, Sicily, Pantelleria island, close to Cala 5 Denti, *Galbany 2327* (BC 950781); ETS:
526 *KY242894, *KY242895, *KY242896, *KY242897, *KY242898, *KY242899. *Helichrysum errerae*
527 Tineo var. *messerii* (Pignatti) Raimondo / *Helichrysum pendulum* (C. Presl) C. Presl; Italy, Sicily,
528 Marettimo islet, by the way to Punta Troia, *Galbany 2328 & Garcia-Jacas* (BC 950779); ETS:
529 *KY242860, *KY242861. *Helichrysum foetidum* (L.) Moench; Ex Dresden Bot. Gard. (BCN 8219);
530 *rpl32*: HG798192. *Helichrysum fontanesii* Cambess. / *Helichrysum pendulum* (C. Presl) C. Presl;
531 Algeria, Djurdjura, Col de Tirourda, *Aldasoro 20093* (BC 950778); ETS: *KY242924, *KY242925,
532 *KY242926, *KY242927, *KY242928; *rpl32*: *KY243018 (H9). *Helichrysum fontanesii* Cambess. /
533 *Helichrysum pendulum* (C. Presl) C. Presl; Algeria, Bejaia, Pic des Singes, col, *Vela 4* (BC 950774);
534 ETS: *KY242910, *KY242911, *KY242912, *KY242913, *KY242914. *Helichrysum fontanesii*
535 Cambess. / *Helichrysum pendulum* (C. Presl) C. Presl; Algeria, Oran, route of Santa Cruz, *Vela 5* (BC
536 950773); *KY242915, *KY242916, *KY242917, *KY242918; *rpl32*: *KY243014 (H5). *Helichrysum*
537 *fontanesii* Cambess. / *Helichrysum pendulum* (C. Presl) C. Presl; Algeria, Annaba, La Volie Noire, *Vela*
538 *6* (no voucher); ETS: *KY242908, *KY242909. *Helichrysum fontanesii* Cambess. / *Helichrysum*
539 *pendulum* (C. Presl) C. Presl; Algeria, Djurdjura, Azrou n'Tohor, *Vela 9* (BC 950772); ETS: *KY242919,
540 *KY242920, *KY242921, *KY242922, *KY242923. *Helichrysum fontanesii* Cambess. / *Helichrysum*
541 *pendulum* (C. Presl) C. Presl; Morocco, Beni-Mellal, El-Ksiba, *Galbany 2220 & al.* (BC 950771); ETS:
542 *KY242929, *KY242930, *KY242931, *KY242932, *KY242933. *Helichrysum fontanesii* Cambess. /
543 *Helichrysum pendulum* (C. Presl) C. Presl; Morocco, Rif mountains, Djebel Tassaout, between
544 Talambote and Djebel Tassaout, *Galbany 2297 & al.* (BC 950795); ETS: *KY242937, *KY242938,
545 *KY242939, *KY242940, *KY242941. *Helichrysum fontanesii* Cambess. / *Helichrysum pendulum* (C.
546 Presl) C. Presl; Morocco, Middle Atlas, between Sefrou and Ifrane, *Galbany 2298 & al.* (BC 950797);
547 ETS: *KY242934, *KY242935, *KY242936. *Helichrysum fontanesii* Cambess. / *Helichrysum*
548 *pendulum* (C. Presl) C. Presl; Spain, Balearic Islands, Ibiza, Santa Agnès de Corona, by the way to Cala
549 Aubarca, *Galbany 2244 & Arrabal* (BC 950767); ETS: *KY242821, *KY242822, *KY242823,
550 *KY242824, *KY242825, *KY242826, *KY242827, *KY242828. *Helichrysum fontanesii* Cambess. /
551 *Helichrysum pendulum* (C. Presl) C. Presl; Spain, Balearic islands, Ibiza, by the way to Cala Xarraca,
552 *Galbany 2245 & Arrabal* (BC 950763); ETS: *KY242829, *KY242830; *rpl32*: *KY243017 (H8).
553 *Helichrysum fontanesii* Cambess. / *Helichrysum pendulum* (C. Presl) C. Presl; Spain, Balearic islands,

- 554 Ibiza, Santa Agnès de Corona, by the way to Cala Ses Balandres, *Galbany 2256 & Arrabal* (BC 950762);
555 ETS: *KY242831, *KY242832, *KY242833, *KY242834. *Helichrysum fontanesii* Cambess. /
556 *Helichrysum pendulum* (C. Presl) C. Presl; Spain Balearic Islands, Ibiza, Es Vedrà, *Sáez 7150* (BC
557 950759); ETS: *KY242835, *KY242836. *Helichrysum fontanesii* Cambess. / *Helichrysum pendulum*
558 (C. Presl) C. Presl; Spain, Balearic islands, Cabrera archipelago, Imperialet, *Sáez s.n.* (BC 950769); ETS:
559 *KY242817, *KY242818, *KY242819, *KY242820. *Helichrysum fontanesii* Cambess. / *Helichrysum*
560 *pendulum* (C. Presl) C. Presl; Spain, Balearic islands, Majorca, Formentor, by the road to Albercutx
561 tower, *Sáez s.n.* (no voucher); ETS: *KY242808, *KY242809, *KY242810, *KY242811, *KY242812.
562 *Helichrysum fontanesii* Cambess. / *Helichrysum pendulum* (C. Presl) C. Presl; Spain, Balearic Islands,
563 Majorca, Gorg Blau, *Sáez s.n.* (no voucher); ETS: *KY242804, *KY242805, *KY242806, *KY242807.
564 *Helichrysum fontanesii* Cambess. / *Helichrysum pendulum* (C. Presl) C. Presl; Spain, Balearic Islands,
565 Majorca, Randa, *Sáez s.n.* (no voucher); ETS: *KY242813, *KY242814, *KY242815, *KY242816.
566 *Helichrysum gossypinum* Sch.Bip.; Spain, Canary Islands, Lanzarote, *Galbany & Arrabal s.n.* (BCN
567 25226); ETS: FJ211578; rpl32: HG798205. *Helichrysum heldreichii* Boiss.; Greece, Crete, Sphakia,
568 Aradena canyon, *Garnatje 134 & Luque* (BCN 6123); ETS: FJ211552.1; rpl32: *KY242978.
569 *Helichrysum hyblaicum* Brullo / *Helichrysum pendulum* (C. Presl) C. Presl; Italy, Sicily, between Avola
570 and Avola Vecchia, *Susanna 2771 & Garcia-Jacas* (BC 950758); ETS: *KY242874, *KY242875,
571 *KY242876, *KY242877. *Helichrysum hyblaicum* Brullo / *Helichrysum pendulum* (C. Presl) C. Presl;
572 Italy, Sicily, between Modica and Ragusa, *Susanna 2772 & Garcia-Jacas* (BC 950755); ETS:
573 *KY242878, *KY242879, *KY242880, *KY242881; rpl32: *KY243012 (H3), *KY243013 (H4).
574 *Helichrysum italicum* (Roth) G. Don subsp. *italicum*; Bosnia-Herzegovina, Herzegovina, pen. Neum,
575 *Redžić & al. s.n.* (BCN 20756); ETS: FJ211548; rpl32: HG798215. *Helichrysum italicum* (Roth) G. Don
576 subsp. *italicum*; Croatia, Makirina, Pirovac, Šibenik-Knin County, *Boršić s.n.* (BC); ETS: *KY242972;
577 rpl32: *KY242979. *Helichrysum italicum* (Roth) G. Don subsp. *italicum*; Italy, Toscana, Grosseto, road
578 from Mascherino to Convento Padri Passionati, *Vilatersana 1229 & al.* (BC 841002); ETS: *KY242974;
579 rpl32: *KY242980. *Helichrysum italicum* subsp. *siculum* (Jord. & Fourr.) Galbany, L. Sáez & Benedí;
580 Italy, Sicily, Palermo, *Vilatersana 1172 & al.* (BC 841000); rpl32: *KY242981. *Helichrysum italicum*
581 subsp. *siculum* (Jord. & Fourr.) Galbany, L. Sáez & Benedí; Italy, Sicily, Messina, Novara di Sicilia to
582 Francavilla di Sicilia, *Vilatersana 1176 & al.* (BC 840999); rpl32: *KY242982. *Helichrysum italicum*
583 subsp. *tyrrhenicum* (Bacch., Brullo & Giusso) Herrando, J.M. Blanco, L. Sáez & Galbany; France,
584 Corsica, La Tonnara, beach, *Galbany 2048 & Arrabal* (BC 841001); rpl32: *KY242983. *Helichrysum*
585 *italicum* subsp. *tyrrhenicum* (Bacch., Brullo & Giusso) Herrando, J.M. Blanco, L. Sáez & Galbany;
586 Spain, Balearic Islands, Dragonera, *Sáez 6991* (BC); ETS: *KY242975; rpl32: *KY243009. *Helichrysum*
587 *litorale* H.Bol.; South Africa, Eastern Cape Province, *Romo 14500 & al.* (BC 867722); rpl32: HG798222.
588 *Helichrysum litoreum* Guss.; Italy, Lipari, S of Cava del Pomice, by the road to Porticello, *Vilatersana*
589 *1182 & al.* (BC 840998); ETS: *KY242976; rpl32: *KY242984. *Helichrysum litoreum* Guss.; Italy,
590 Lazio, Latina, isole Ponziane, Isola di Ventotene, *Vilatersana 1114 & al.* (BC 840997); ETS: *KY242977.
591 *Helichrysum litoreum* Guss.; Italy, Lazio, Latina, S. Felice Circeo, via del Faro, *Vilatersana 1105 & al.*
592 (BC 840996); ETS: *KY242973; rpl32: *KY242985. *Helichrysum marginatum* DC.; South Africa,
593 Eastern Cape Province, *Romo 14434 & al.* (BC 867675); rpl32: HG798225. *Helichrysum*
594 *massanellianum* Herrando, J. M. Blanco, L. Sáez & Galbany; Spain, Balearic islands, Majorca, Coll d'es
595 Telègraf, *Galbany & Sáez s.n.* (BCN 6115); ETS: FJ211546. *Helichrysum melaleucum* Rchb. ex Holl;
596 Portugal, Madeira island, *Jardim s.n.* (MADJ); rpl32: HG798226. *Helichrysum melitense* (Pignatti)
597 Brullo, Lanfr., Pavone & Ronsisv. / *Helichrysum melitense* (Pignatti) Brullo, Lanfr., Pavone & Ronsisv.;
598 Malta, Gozo island, Dwejra, Inland sea, *Galbany 2262 & Arrabal* (BC 950752); ETS: *KY242900,
599 *KY242901, *KY242902, *KY242903; rpl32: *KY243024 (H15). *Helichrysum melitense* (Pignatti)
600 Brullo, Lanfr., Pavone & Ronsisv. / *Helichrysum melitense* (Pignatti) Brullo, Lanfr., Pavone & Ronsisv.;
601 Malta, Gozo island, San Lawrenz, *Galbany 2263 & Arrabal* (BC 950753); ETS: *KY242904,
602 *KY242905, *KY242906, *KY242907. *Helichrysum monizii* Lowe; Portugal, Madeira island, *Jardim*
603 *s.n.* (MADJ); rpl32: HG798232. *Helichrysum monogynum* B.L.Burt & Sunding; Spain, Canary Islands,
604 Lanzarote, *Galbany & Arrabal s.n.* (BCN 25227); rpl32: HG798233. *Helichrysum montanum* DC.;
605 South Africa, Kwazulu-Natal Province, *Romo 14392 & al.* (BC 867659); rpl32: HG798234. *Helichrysum*
606 *mussae* Nevski; Tadzhikistan, Zeravshchan Mts., *Filatov & al. 81* (LE); rpl32: FJ211555. *Helichrysum*
607 *obconicum* DC.; Portugal, Madeira island, *Jardim s.n.* (MADJ); rpl32: HG798241. *Helichrysum*
608 *orientale* (L.) Gaertn.; Greece, Crete, ex Roy. Bot. Gard. Kew (BCN 6098); ETS: FJ211567; rpl32:
609 HG798244. *Helichrysum panormitanum* Guss. / *Helichrysum pendulum* (C. Presl) C. Presl; Italy,
610 Sicily, by the road from Castellammare del Golfo to Balata di Baida, *Vilatersana 1161 & al.* (BC
611 950754); ETS: *KY242859. *Helichrysum panormitanum* Guss. / *Helichrysum pendulum* (C. Presl) C.
612 Presl; Italy, Sicily, Bagheria, Capo Zafferano, *Galbany 2319 & Garcia-Jacas* (BC 950768); ETS:
613 *KY242847, *KY242848. *Helichrysum panormitanum* Guss. / *Helichrysum pendulum* (C. Presl) C.

614 Presl; Italy, Sicily, Palermo, Monte Pellegrino, *Galbany* 2322 & *Garcia-Jacas* (BC 950757); ETS:
615 *KY242854, *KY242855, *KY242856, *KY242857, *KY242858. *Helichrysum panormitanum* Guss. /
616 *Helichrysum pendulum* (C. Presl) C. Presl; Italy, Sicily, San Vito lo Capo, prop de Torre dell'Impiso,
617 *Galbany* 2329 & *Garcia-Jacas* (BC 950770); ETS: *KY242862, *KY242863, *KY242864, *KY242865;
618 rpl32: *KY243015 (H6). *Helichrysum panormitanum* Guss. / *Helichrysum pendulum* (C. Presl) C.
619 Presl; Italy, Sicily, Palermo, Sferracavallo, *Galbany* 2321 & *Garcia-Jacas* (BC 950756); ETS:
620 *KY242849, *KY242850, *KY242851, *KY242852, *KY242853. *Helichrysum panormitanum* Guss. /
621 *Helichrysum pendulum* (C. Presl) C. Presl; Italy, Sicily, dirty road from Portella della Páglia to La
622 Pizzuta, *Galbany* 2309 & *Garcia-Jacas* (BC 950784); ETS: *KY242882. *Helichrysum nebrodense*
623 Heldr. / *Helichrysum pendulum* (C. Presl) C. Presl; Italy, Sicily, Madonie mountains, Isnello, road from
624 Cefalu to Isnello, *Susanna* 2774 & *Garcia-Jacas* (BC 950821); ETS: *KY242866, *KY242867,
625 *KY242868, *KY242869; rpl32: *KY243011 (H2). *Helichrysum pendulum* (C. Presl) C. Presl /
626 *Helichrysum pendulum* (C. Presl) C. Presl; Italy, Sicily, Madonie, parco regionale delle Madonie, crest
627 of Mount Quacella, by the way to Vallone Madonna delle Angeli, *Vilatersana* 1154 & *al.* (BC 950750);
628 ETS: *KY242870, *KY242871, *KY242872, *KY242873. *Helichrysum rubicundum* (K.Koch) Bornm.;
629 Iran, Azarbaidjan, *Termeh* & *al. s.n.* (IRAN 35924,4); rpl32: HG798261. *Helichrysum rugulosum* Less.;
630 South Africa, Free State Province, *Romo* 14331 & *al.* (BC 867613); rpl32: HG798262. *Helichrysum*
631 *saxatile* Moris / *Helichrysum saxatile* Moris; Italy, Sardinia, road between Grotta Ispinigoli and Cala
632 Gonone, *Galbany* 2078 & *Arrabal* (BC 950799); rpl32: *KY243023 (H14). *Helichrysum saxatile* Moris /
633 *Helichrysum saxatile* Moris; Italy, Sardinia, between Genna Silana and Urzulei, *Galbany* 2082 &
634 *Arrabal* (BC 950786); ETS: *KY242837, *KY242838; rpl32: *KY243021 (H12). *Helichrysum saxatile*
635 Moris / *Helichrysum saxatile* Moris; Italy, Sardinia, road between Baunei and San Pietro, *Galbany* 2083
636 & *Arrabal* (BC 950800); ETS: *KY242839, *KY242840, *KY242841; rpl32: *KY243022 (H13).
637 *Helichrysum saxatile* Moris / *Helichrysum saxatile* Moris; Italy, Sardinia, pr. Oliena, *Galbany* 2084 &
638 *Arrabal* (BC 950787); ETS: *KY242842, *KY242843, *KY242844, *KY242845. *Helichrysum saxatile*
639 Moris / *Helichrysum saxatile* Moris; Italy, Sardinia, Ulassai, *Carnicero* 390 & *Galbany* (BC 950788);
640 ETS: *KY242846. *Helichrysum serotinum* (DC.) Boiss. subsp. *picardii* (Boiss. & Reut.) *Galbany*, L.
641 Sáez & Benedí; Spain, A Coruña, Carnota, Praia de Mallou, *Galbany* 2094 & *Arrabal* (BC 840995); ETS:
642 *KY242957, *KY242958; rpl32: *KY242986, *KY242987, *KY242988. *Helichrysum serotinum* (DC.)
643 Boiss. subsp. *picardii* (Boiss. & Reut.) *Galbany*, L. Sáez & Benedí; Spain, A Coruña, Carballo, Praia de
644 Razo, *Galbany* 2097 & *Arrabal* (BC 840994); ETS: *KY242959, *KY242960; rpl32: *KY242989,
645 *KY242990. *Helichrysum serotinum* (DC.) Boiss. subsp. *serotinum*: Spain, Málaga, Alpujarras,
646 Capileira, *Galbany* & *Arrabal s.n.* (BC 840993); ETS: *KY242961; rpl32: *KY242991. *Helichrysum*
647 *serotinum* (DC.) Boiss. subsp. *serotinum*: Spain, Catalonia, Prades mountains, *Blanco* & *al. s.n.* (BCN
648 20880); ETS: *KY242969; rpl32: *KY242992. *Helichrysum serotinum* (DC.) Boiss. subsp. *serotinum*:
649 Spain, Catalonia, between Fembra Morta and l'Avellana, *Quadrada s.n.* (BCN 26191); ETS: *KY242970;
650 rpl32: *KY242993. *Helichrysum serotinum* (DC.) Boiss. subsp. *serotinum*: Spain, Catalonia, Ports de
651 Beseit, Barranc de la Galera, *Blanco* & *al. s.n.* (BCN 20877); ETS: *KY242971; rpl32: *KY242994.
652 *Helichrysum sibthorpii* Rouy; Greece, ex Roy. Bot. Gard. Kew (BCN 6099); rpl32: HG798266.
653 *Helichrysum stoechas* (L.) Moench; Greece, Crete, Thripti, *Galbany* 2143 & *al.* (no voucher); rpl32:
654 *KY242995. *Helichrysum stoechas* (L.) Moench; Greece, Crete, Thripti, *Galbany* 2144 & *al.* (no
655 voucher); ETS: *KY242948; rpl32: *KY242996. *Helichrysum stoechas* (L.) Moench; Greece, Crete,
656 Paleokastro, *Galbany* 2154 & *al.* (BC 950160); ETS: *KY242949; rpl32: *KY242997. *Helichrysum*
657 *stoechas* (L.) Moench; Greece, Crete, Paleokastro, *Galbany* 2157 & *al.* (BC 940992); ETS: *KY242950;
658 rpl32: *KY242998. *Helichrysum stoechas* (L.) Moench; Greece, Rhodes, between Kritinia and Siana,
659 *Galbany* 2172 & *al.* (BC 950743); ETS: *KY242955; rpl32: *KY242999. *Helichrysum stoechas* (L.)
660 Moench; Greece, Karpathos, Finiki, *del Rey* & *Vilatersana* 1760 (BC 950744); ETS: *KY242962,
661 *KY242963; rpl32: *KY243000. *Helichrysum stoechas* (L.) Moench; Spain, Alicante, Marina Alta,
662 Teulada, Benimarco, *Galbany* 2293 & *al.* (BC 950745); ETS: *KY242954, *KY242956; rpl32:
663 *KY243001. *Helichrysum stoechas* (L.) Moench; Spain, Alicante, Finestrat, Puig Campana, *Galbany*
664 2294 & *al.* (BC 950746); ETS: *KY242953. *Helichrysum stoechas* (L.) Moench; Spain, Balearic Islands,
665 Ibiza, Vedranell, *Sáez s.n.* (BC); ETS: *KY242947; rpl32: *KY243002. *Helichrysum stoechas* (L.)
666 Moench; Spain, Balearic Islands, Ibiza, by the road between Cala Xarraca and St. Miquel, *Galbany* 2246
667 & *Arrabal* (BC 950747); ETS: *KY242952; rpl32: *KY243003. *Helichrysum stoechas* (L.) Moench;
668 Spain, Balearic Islands, Ibiza, Santa Agnès de Corona, by the way to Cala Aubarca, *Galbany* 2232 &
669 *Arrabal* (BC): ETS: *KY242951. *Helichrysum stoechas* (L.) Moench; Spain, Lleida, la Granadella,
670 *Galbany s.n.* (BCN 6114); ETS: FJ211543; rpl32: FN649351. *Helichrysum stoechas* (L.) Moench; Spain,
671 Almería, Rodalquilar, *Vilatersana* 1103 (BC); ETS: *KY242965, *KY242966; rpl32: *KY243004,
672 *KY243005. *Helichrysum stoechas* (L.) Moench; Tunisia, Nabeul, Cap Bon, *Romo* & *Vilatersana* 1385
673 (BC); ETS: *KY242964; rpl32: *KY243006. *Helichrysum stoechas* (L.) Moench; Tunisia, N Bizerte,

674 over lighthouse, *Romo & Vilatersana 1310* (BC); ETS: *KY242967, *KY242968; rpl32: *KY243007,
675 *KY243008. *Helichrysum thianschanicum* Regel; Ex Hortus Botanicus Táhor (BCN 10337); rpl32:
676 HG798274. *Helichrysum valentinum* Rouy; Spain, Alicante, Montgó mountain, *Galbany 2271 & al.* (BC
677 950801); ETS: *KY242788, *KY242789, *KY242790, *KY242791; rpl32: *KY243010 (H1).
678 *Helichrysum valentinum* Rouy; Spain, Alicante, Moraira, by the way to Cala Llebeig, *Galbany 2284,*
679 *2285, 2288, 2289 & al.* (BC 950789; BC 950790; BC 950792; BC 950793; BC 950794); ETS:
680 *KY242792, *KY242793, *KY242794, *KY242795. *Helichrysum valentinum* Rouy; Spain, Alicante,
681 Castell de Castells, Cerro de los Parados, *Galbany 2291 & al.* (BC 950802); ETS: *KY242796,
682 *KY242797, *KY242798, *KY242799, *KY242800; rpl32: *KY243016 (H7). *Helichrysum valentinum*
683 Rouy; Alicante, Benifato, Vall de Guadalest, *Galbany 2292 & al.* (BC 950803); ETS: *KY242801,
684 *KY242802, *KY242803.