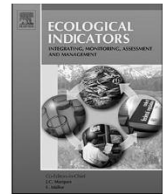




Contents lists available at ScienceDirect

Ecological Indicators

journal homepage: www.elsevier.com/locate/ecolind

Assessing the environmental status of selected North Atlantic deep-sea ecosystems



Georgios Kazanidis^{a,*}, Covadonga Orejas^b, Angel Borja^c, Ellen Kenchington^d, Lea-Anne Henry^a, Oisín Callery^e, Marina Carreiro-Silva^f, Hronn Egildottir^g, Eva Giacomello^f, Anthony Grehan^e, Lénaïck Menot^h, Telmo Morato^f, Stefán Áki Ragnarsson^g, José Luis Ruedaⁱ, David Stirling^j, Tanja Stratmann^{k,o,p}, Dick van Oevelen^k, Andreas Palialexis^l, David Johnson^{m,a}, J Murray Roberts^{a,n}

^a Changing Oceans Research Group, School of GeoSciences, University of Edinburgh, UK

^b Spanish Institute of Oceanography, (IEO), Oceanographic Centre of the Balearics (COB), Ecosystem Oceanography Group (GRECO), Spain

^c AZTI, Marine Research, Basque Research and Technology Alliance (BRTA), Spain

^d Department of Fisheries and Oceans, Bedford Institute of Oceanography (DFO), Canada

^e National University of Ireland, Galway, Ireland

^f IMAR-Instituto do Mar, OKEANOS Research Centre, Universidade dos Açores, Horta, Portugal

^g Marine and Freshwater Research Institute, Iceland

^h Ifremer, REM/EEP/LEP, Centre de Bretagne, Plouzané, France

ⁱ Spanish Institute of Oceanography (IEO), Oceanographic Centre of Málaga (COMA), Fuengirola (Málaga), Spain

^j Marine Scotland Science, Marine Laboratory, 375 Victoria Road, Aberdeen, Scotland, UK

^k NIOZ Royal Netherlands Institute for Sea Research, Department of Estuarine and Delta Systems, and Utrecht University, Yerseke, the Netherlands

^l European Commission, Joint Research Centre (JRC), Ispra, Italy

^m Seascope Consultants Ltd, UK

ⁿ Center for Marine Science, University of North Carolina at Wilmington, Wilmington, NC, USA

^o Current address: Utrecht University, Department of Earth Sciences, Utrecht, The Netherlands

^p Current address: HGF MPG Joint Research Group for Deep-Sea Ecology and Technology, Max Planck Institute for Marine Microbiology, Bremen, Germany

ARTICLE INFO

Keywords:

Deep-sea environmental status
Vulnerable Marine Ecosystems
Indicators
Baselines
Marine Strategy Framework Directive
NEAT

ABSTRACT

The deep sea is the largest biome on Earth but the least explored. Our knowledge of it comes from scattered sources spanning different spatial and temporal scales. Implementation of marine policies like the European Union's Marine Strategy Framework Directive (MSFD) and support for Blue Growth in the deep sea are therefore hindered by lack of data. Integrated assessments of environmental status require tools to work with different and disaggregated datasets (e.g. density of deep-sea habitat-forming species, body-size distribution of commercial fishes, intensity of bottom trawling) across spatial and temporal scales. A feasibility study was conducted as part of the four-year ATLAS project to assess the effectiveness of the open-access Nested Environmental status Assessment Tool (NEAT) to assess deep-sea environmental status. We worked at nine selected study areas in the North Atlantic focusing on five MSFD descriptors (D1-Biodiversity, D3-Commercial fish and shellfish, D4-Food webs, D6-Sea-floor integrity, D10-Marine litter). The objectives of the present study were to i) explore and propose indicators that could be used in the assessment of deep-sea environmental status, ii) evaluate the performance of NEAT in the deep sea, and iii) identify challenges and opportunities for the assessment of deep-sea status. Based on data availability, data quality and expert judgement, in total 24 indicators (one for D1, one for D3, seven for D4, 13 for D6, two for D10) were used in the assessment of the nine study areas, their habitats and ecosystem components. NEAT analyses revealed differences among the study areas for their environmental status ranging from "poor" to "high". Overall, the NEAT results were in moderate to complete agreement with expert judgement, previous assessments, scientific literature on human-pressure gradients and expected management outcomes. We suggest that the assessment of deep-sea environmental status should take place at habitat and ecosystem level (rather than at species level) and at relatively large spatial scales, in comparison to shallow-water areas. Limited knowledge across space (e.g. distribution of habitat-forming species) and the scarcity of long-term data sets limit our knowledge about natural variability and human impacts in the deep sea preventing

* Corresponding author.

E-mail address: gzkazanid@ed.ac.uk (G. Kazanidis).

<https://doi.org/10.1016/j.ecolind.2020.106624>

Received 12 February 2020; Received in revised form 5 June 2020; Accepted 11 June 2020

Available online 17 September 2020

1470-160X/ Crown Copyright © 2020 Published by Elsevier Ltd. This is an open access article under the CC BY license

(<http://creativecommons.org/licenses/by/4.0/>).

a more systematic assessment of habitat and ecosystem components in the deep sea. However, stronger cross-sectoral collaborations, the use of novel technologies and open data-sharing platforms will be critical for establishing environmental baseline indicator values in the deep sea that will contribute to the science base supporting the implementation of marine policies and stimulating Blue Growth.

1. Introduction

Over the last decades technological development has enabled the exploration of the deep sea i.e. areas below 200 m water depth. This has led to the discovery of a great diversity of habitats and ecosystem components including hotspots of biodiversity like cold-water coral (CWC) reefs (Roberts et al., 2006; Buhl-Mortensen et al., 2010; Henry and Roberts, 2017) and deep-sea sponge aggregations (Maldonado et al., 2017; Kazanidis et al., 2019). Studies have also revealed that deep-sea ecosystems are under multiple pressures arising from human activities such as bottom trawling (Clark et al., 2016; Kroodsmas et al., 2018), operation of oil and gas infrastructures (Cordes et al., 2016; Vad et al., 2018), deep-sea mining (Van Dover et al., 2017; Gollner et al., 2017) and changes in water mass characteristics as a consequence of global climate change (Sweetman et al., 2017; Morato et al., 2020). Halpern et al. (2019) assert that most of the ocean (59%) is experiencing significantly increasing cumulative impacts. Human activities can have severe and long-term impacts on deep-sea Vulnerable Marine Ecosystems (VMEs) as by definition (FAO, 2009, 2016) these are formed from slow-growing, long-lived organisms whose recovery following human disturbance can take decades or even centuries (Larcom et al., 2014; Huvenne et al., 2016; Clark et al., 2019). Thus, the assessment of health status of deep-sea ecosystems and the implementation of management and conservation strategies is of utmost importance considering the provision of goods and services such as climate regulation, food and energy supply, potential for bioprospecting (Folkersen et al., 2018), cultural services and inspirational contributions (Armstrong et al., 2019).

Despite recent advances in deep-sea research, current knowledge of the structure and functioning of deep-sea ecosystems remains extremely limited. It is often composed from discrete observations over small areas, and over short time scales. This is in contrast to more comprehensive knowledge for coastal ecosystems regarding aspects like the spatial distribution of habitats, the natural variability of ecosystems (at short and long temporal scales), the extent and intensity of multiple human activities and the resilience of ecosystems to human pressures (Glover et al., 2010; Ramirez-Llodra et al., 2011; Murillo et al., 2016; OSPAR, 2017; Dailianis et al., 2018; Miloslavich et al., 2018; Pham et al., 2019). Moreover, information about the distribution of multiple human pressures across the deep sea (Benn et al., 2010; Pham et al., 2014) and experimental work about the response and resilience of deep-sea species and habitats to multiple human pressures is also very limited (Lunden et al., 2014; Büscher et al., 2017; Levin et al., 2019).

The lack of available data, especially of long-term time series, from deep-sea ecosystems make the selection of suitable indicators for assessing the deep-sea environmental status challenging. In 2008, the European Union (EU) established the Marine Strategy Framework Directive (MSFD) with overarching aims achieving Good Environmental Status (GES) in European Member States' seas and protecting the resource base upon which marine-related economic and social activities depend (European Commission, 2008, 2017). The MSFD sets out descriptors and criteria in order to evaluate the achievement of GES in European marine waters. The 11 qualitative descriptors comprise: D1-Biodiversity, D2-Non-indigenous species, D3-Commercial fish and shellfish, D4-Food webs, D5-Eutrophication, D6-Sea-floor integrity, D7-Hydrographic conditions, D8-Contaminants, D9-Contaminants in seafood, D10- Marine litter, and D11-Energy incl.

underwater noise. Obligations arising from the MSFD apply to areas under the sovereignty and jurisdiction of the EU Member States. The first MSFD reports (initial assessment, GES determination and target setting) were submitted by EU Member States to the EC in 2012. These reports included very little information about the deep-sea areas in the member states' national jurisdiction (i.e. France, Ireland, Portugal, Spain, and United Kingdom as countries with Exclusive Economic Zones (EEZ) in the North Atlantic). This is a major gap as deep-sea areas in the North Atlantic and Mediterranean Sea support rich habitats (rocky and sedimentary habitats, VMEs like CWC reefs, deep-sea sponge aggregations or chemosynthetic ecosystems), the conservation of which could be jeopardized from expanding multisectoral human activities and changing ocean conditions (North Atlantic: Bett, 2001; Reveillaud et al., 2008; Buhl-Mortensen et al., 2015; Hátún et al., 2017; OSPAR, 2017; Mediterranean Sea: Fabri et al., 2019; Maier et al., 2019; Danovaro et al., 2020).

Integrated assessments of deep-sea environmental status require tools able to accommodate different and disaggregated data sets (e.g. density of habitat-forming species, body-size distribution of commercial fishes, intensity of bottom trawling on the seafloor) collected across various spatial and temporal scales (Prins et al., 2014; OSPAR, 2017; Fabri et al., 2019; Danovaro et al., 2020 for the work of the "Implementation of the MSFD to the DEEP Mediterranean Sea" project -IDEM- assessing the environmental status in Mediterranean deep-sea areas). In this context, the "Nested Environmental status Assessment Tool" (NEAT; <http://www.devotes-project.eu/neat/>) was developed to assess the environmental status in marine environments and specifically for the MSFD and GES (Berg et al., 2016; Borja et al., 2016). One of the key features of NEAT is that it assembles data from various indicators (average value and standard error) over different spatial and temporal scales in a nested hierarchical structure which is composed of interconnected indicators, spatial assessment units, habitats and ecosystem components. Each of the indicators is linked to a different MSFD descriptor. Therefore, NEAT allows for an integrated assessment of marine environmental status. Up to now NEAT has mostly been used in coastal areas which usually have a fair amount of data; on the contrary the data availability in the deep sea is in general very limited. Those NEAT assessments in shallow-water ecosystems produced useful and sound results always depending on the amount and quality of data available (Uusitalo et al., 2016; Nemati et al., 2017, 2018; Pavlidou et al., 2019; Borja et al., 2019).

In order to contribute to the implementation of the MSFD in the deep North Atlantic the H2020 ATLAS project ("A transatlantic assessment and deep-water ecosystem-based spatial management plan for Europe"; <https://www.eu-atlas.org/>) carried out an assessment on the environmental status of nine strategically-selected North Atlantic deep-sea areas. The ATLAS work focused on descriptors D1, D3, D4, D6 and D10 as they are particularly relevant for the deep sea. The objectives of the current manuscript in line with the aim of ATLAS's work were to:

- (1) explore and propose indicators and identify the relevant MSFD criteria that could be addressed in deep-sea ecosystems,
- (2) evaluate the performance of the NEAT tool in the assessment of deep-sea environmental status,
- (3) identify challenges (e.g. data standardization) and opportunities (e.g. use of new technology) in the assessment of deep-sea environmental status.

2. Materials and methods

2.1. The deep North Atlantic areas

This study has been conducted in nine of the ATLAS project's Case Study areas in the North and northeast Atlantic i.e. LoVe Ocean Observatory (Holla trough, northern Norway), Faroe-Shetland Channel (northwest Scotland), Reykjanes Ridge (southwest Iceland), Rockall Bank (northwest Ireland/UK), Mingulay Reef Complex (southwest Scotland), Porcupine Seabight (southwest Ireland), Bay of Biscay (northern Spain/western France), Condor seamount (central North Atlantic, Azores) and Gulf of Cádiz (southwest Spain) (Fig. 1; Table 1). These nine areas included VMEs (FAO, 2009, 2016) across the North Atlantic (Fig. 1; Table 1) encompassing CWC reefs, coral gardens and deep-sea sponge aggregations. Previous studies have been conducted in these nine areas (e.g. LoVe Ocean Observatory – Osterloff et al., 2016; Van Engeland et al., 2019; Faroe-Shetland Channel – Jones et al., 2006; Kazanidis et al., 2019; Reykjanes Ridge - Copley et al., 1996; Magnússon and Magnússon, 1995; Rockall Bank - Newton et al., 2008, JNCC 2018a, b; Mingulay Reef Complex – Roberts et al., 2009; De Clippele et al., 2017; Porcupine Seabight - Henry and Roberts, 2007; OSPAR, 2017; Bay of Biscay – Van den Beld et al., 2017a, b; Azores – Braga-Henriques et al., 2013; Pham et al., 2015; Gulf of Cádiz – Díaz-del-Río et al., 2014; Rueda et al., 2016) and consequently the data availability is higher than in other areas.

2.2. Assessment of environmental status using NEAT

The NEAT is a freely downloadable assessment tool (<http://www.devotes-project.eu/neat>). Data analysis classifies Spatial Assessment Units (SAUs), habitats and ecosystem components in five predefined categories of environmental status (bad, poor, moderate, good and high) (Berg et al., 2016). Assessments of marine environmental status using NEAT are based on the selection of indicators, accompanied by the supply of data to measure these indicators and for the setup of boundary values for each of the indicators. These steps are followed by the designation of the above mentioned SAUs, habitats and ecosystem components in each of the study areas.

2.2.1. Selection of indicators

NEAT includes a database of > 500 indicators for MSFD descriptors D1-D8, D11 (Teixeira et al., 2016). From this database, indicators deemed to be the most appropriate for assessing deep-sea environmental status were selected (e.g. biomass of commercial fish, areal extent of human affected area). This selection took into account the special features of the deep sea including habitat remoteness (and associated difficulties in sampling) and the high sensitivity of deep-sea organisms to human activities. In addition, new indicators were suggested by 15 individual deep-sea experts from the ATLAS consortium and added to those extracted from the NEAT database. This was done to supplement the assessment using deep-sea specific indicators (the NEAT database contains several indicators that are not applicable to the deep

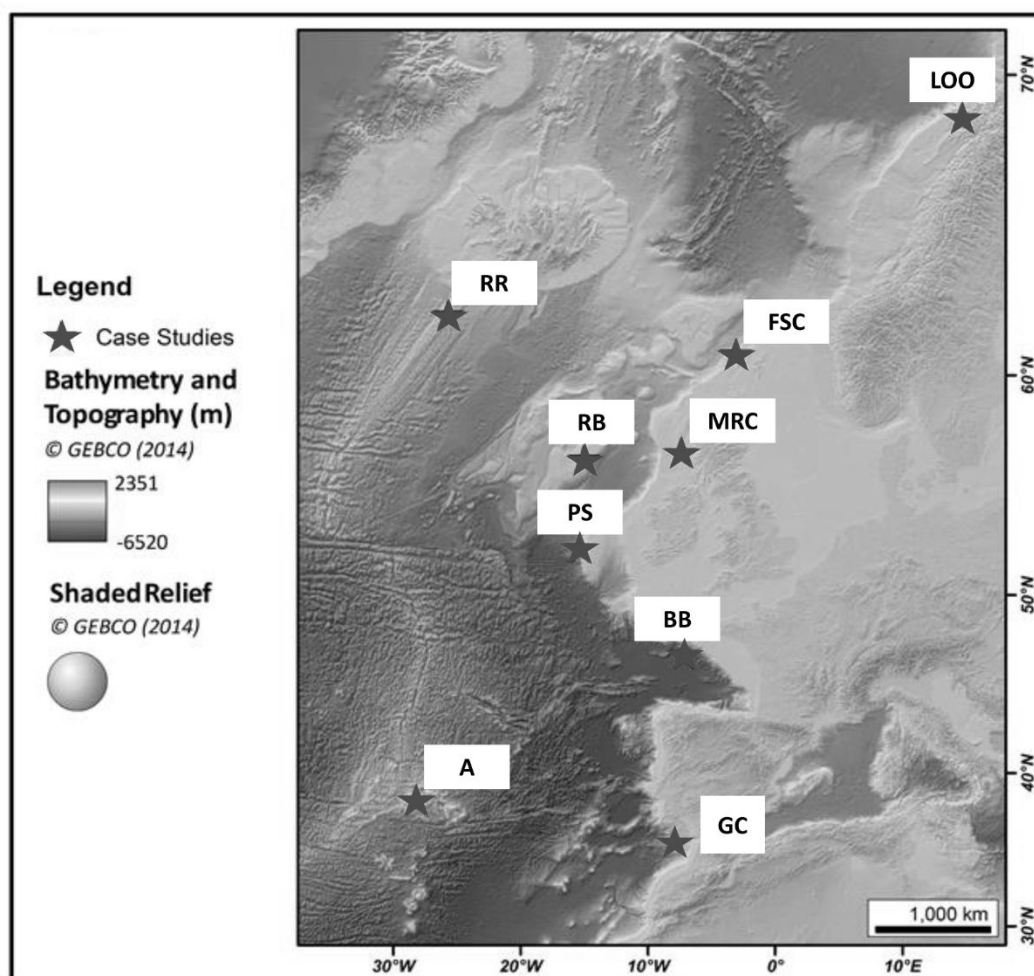


Fig. 1. Location in the North Atlantic of the nine ATLAS study areas examined in the present study. LOO: LoVe Ocean Observatory; FSC: Faroe-Shetland Channel; RR: Reykjanes Ridge; RB: Rockall Bank; MRC: Mingulay Reef Complex; PS: Porcupine Seabight; BB: Bay of Biscay; A: Azores, Condor seamount; GC: Gulf of Cádiz.

Table 1

Study areas and their key features. Abbreviations: NEAFC (North East Atlantic Fisheries Commission), SAC (Special Area of Conservation). The references cited apply to more than one column. (See below-mentioned references for further information.)

Study area	Characteristic fauna	Human pressures	Blue Growth sectors	Conservation (encountered across the study area)	Status	Time frame of data collection used in present study	References
LoVe Observatory	Ocean <i>Lophelia pertusa</i> (coral), <i>Gadus morhua</i> (cod)	Fisheries, tourism	Fisheries, oil and gas, tourism	Marine Protected Areas		Cabled ocean observatory 2013-2019	Godø et al. (2014); Osterloff et al. (2016); Van Engeland et al. (2019)
Faroe-Shetland Channel	<i>Geodia</i> spp. (sponges), <i>Phakelia</i> sp. (sponges), protists, corals, acorn worms	Fisheries, oil and gas, cables, telecommunication, shipping	Fisheries, oil and gas, blue biotechnology	Marine Protected Area		2012-2016	Bullough et al. (1998); Narayanaswamy et al. (2010); Bett (2012); Kazanidis et al. (2019)
Reykjanes Ridge	<i>Sebastes</i> spp., <i>Lophelia pertusa</i> (coral), Axinellidae, <i>Haliclona</i> cf. <i>urceolus</i> , <i>Mycale lingua</i> , Nephtheidae	Fisheries	Fisheries, blue biotechnology, deep-sea mining	Fisheries closure		1995-2017	Magnússon and Magnússon (1995); Copley et al. (1996); Ragnarsson and Steingrímsson (2003); Buhl-Mortensen et al. (2015)
Rockall Bank	<i>Lophelia pertusa</i> (coral), sponges, sea pens	Fisheries	Fisheries, oil and gas, blue biotechnology	Extensive closed areas (NEAFC), SACs		1985-2017	Newton et al. (2008); Robert et al. (2014); Neat et al. (2018)
Mingulay Complex	Reef <i>Lophelia pertusa</i> (coral), sponges, soft corals, ophiuroids	Fisheries, marine litter	Fisheries, tourism	SAC		2003-2019	Roberts et al. (2009); Henry et al. (2013); La Beur et al. (2019)
Porcupine Seabight	<i>Lophelia pertusa</i> (coral)	Fisheries, oil and gas, telecommunications, cables	Fisheries, oil and gas, blue biotechnology	SAC		2009-2017	Roberts et al. (2003); Henry and Roberts (2007); Priede et al. (2010); Rengstorf et al. (2013); Vieira et al. (2019, 2020)
Bay of Biscay	<i>Lophelia pertusa</i> (coral), <i>Madrepora oculata</i> (coral), antipatharians, gorgonians, sponges	Fisheries, marine litter	Fisheries, blue biotechnology	Natura 2000 network		2009-2012	Lopez-Lopez et al. (2017); Van den Beld et al. (2017a, b); OSPAR (2017)
Condor seamount, Azores	Octocorals (e.g. <i>Acanthogorgia</i> sp., <i>Callogorgia verticillata</i> , <i>Dentomuricea</i> aff. <i>meteor</i> , <i>Viminella flagellum</i>), demersal fish (<i>Pagellus bogaraveo</i> , <i>Helicolenus dactylopterus</i>)	Fisheries	Fisheries, blue biotechnology, deep-sea mining	Marine Protected Areas		2009-2016 (before-after fisheries closure)	Morato et al. (2010); Tempera et al. (2012); Braga-Henriques et al. (2013); Menezes and Giacomello (2013); Braga-Henriques (2014); Pham et al. (2015)
Gulf of Cádiz	<i>Lophelia pertusa</i> (coral), <i>Madrepora oculata</i> (coral), gorgonians (e.g. <i>Acanthogorgia</i> spp., <i>Viminella flagellum</i> , <i>Callogorgia verticillata</i>), sponges (<i>Asconema setubalense</i>), sea-pens, antipatharians	Fisheries, shipping	Fisheries, oil and gas, blue biotechnology	Natura 2000 network (Site of Community Importance)		2014-2016	Díaz-del-Río et al. (2014); Rueda et al. (2016); González-García et al. (2020); Lozano et al. (2020)

sea e.g. indicators related to seagrasses) or to address the lack of D10 (marine litter) indicators from NEAT database. In total 305 indicators were extracted. To reduce this list to a manageable number of indicators, a further selection was made based on ATLAS expert judgement for the most suitable indicators to be applied to the deep sea. The selection of indicators was based on expert judgment taking into account the relevance of an indicator for the assessment of the deep-sea environmental status and the feasibility of measurements (considering the technological challenges involved in the exploration of the deep sea and the associated limited availability of data). Indicators advocated by 80% of the 15 ATLAS experts, were shortlisted. The only exception to that threshold were indicators for D3, where the level of agreement was lower, and it was decided to reduce the threshold level to 65% to ensure an adequate list of D3 indicators.

2.2.2. Data requirements and collection

Following the selection of indicators, data were amassed from each study area in order to fulfil NEAT data requirements which are described in detail by Berg et al. (2016) and Uusitalo et al. (2016). In summary, the main data requirements to apply NEAT are the following:

- (1) **Designation of the Spatial Assessment Units (SAUs)** i.e. areas where the assessment of environmental status takes place. Specific SAUs were designated for each study area. Whenever it was meaningful, SAUs were divided into smaller ones (e.g. the parental SAU was divided into four smaller SAU-1, SAU-2, SAU-3 and SAU-4 in the Rockall Bank; Fig. 2, Table 2) based on data availability, presence/absence of human activities, bathymetry and topography. In some study areas (e.g. in the Reykjanes Ridge) there is overlap among the SAUs driven by data availability for the indicators used in each of the SAUs (see Table 1 in Supplementary File),
- (2) **Habitats** i.e. habitat type present in each of the SAUs (e.g. rocky and sedimentary habitats in the Gulf of Cádiz),
- (3) **Ecosystem components** i.e. organisms present at the habitats (e.g.

CWCs, sea-pens and sponges in the Gulf of Cádiz),

- (4) **Boundary values** i.e. the values separating the five categories of environmental status used in NEAT. The setup of boundary values by ATLAS experts followed six approaches (see recommendations in Borja et al., 2016): 1) Expert judgement only, 2) Expert judgement and use of scientific literature/information from other places or comparison with protected areas, 3) Expert judgement and national legislation, 4) Expert judgement and OSPAR guidance, 5) Expert judgement and data/guidance from International Council for the Exploration of the Sea (ICES) /United Nations' Convention on Biological Diversity (CBD) /United Nations' Framework Convention on Climate Change Decision, and 6) National legislation only. In order to facilitate the task of setting up these boundary values an extensive literature review was carried out. The review spanned over 300 scientific papers, and quantitative data were extracted to set up boundary values in different locations and ecosystems and for each of the indicators (see Table 1 in Supplementary File). The relative frequency of approaches used for the setup of boundary values across the study areas can be seen in Fig. 3. Examples for each of the 6 approaches used in the setup of boundary values are available (Table 1 in Supplementary File).
- (5) **Supply of average value and standard error values** for each of the indicators used in the study areas.

Categories for habitats and ecosystem components were established depending on the data available for each study area. For example, when information was available it was possible to set up "aggregations of CWCs" as a habitat and not just "benthic".

Each indicator must be connected to a SAU, a habitat and an ecosystem component. The same indicator e.g. "Biomass of selected fish species" can be used in the analysis multiple times for multiple SAUs and habitats when it has been assessed for multiple areas. For example, the indicator "Biomass of selected fish species" was used across the four SAUs and nine fish species in the Rockall Bank (see Table 1 in

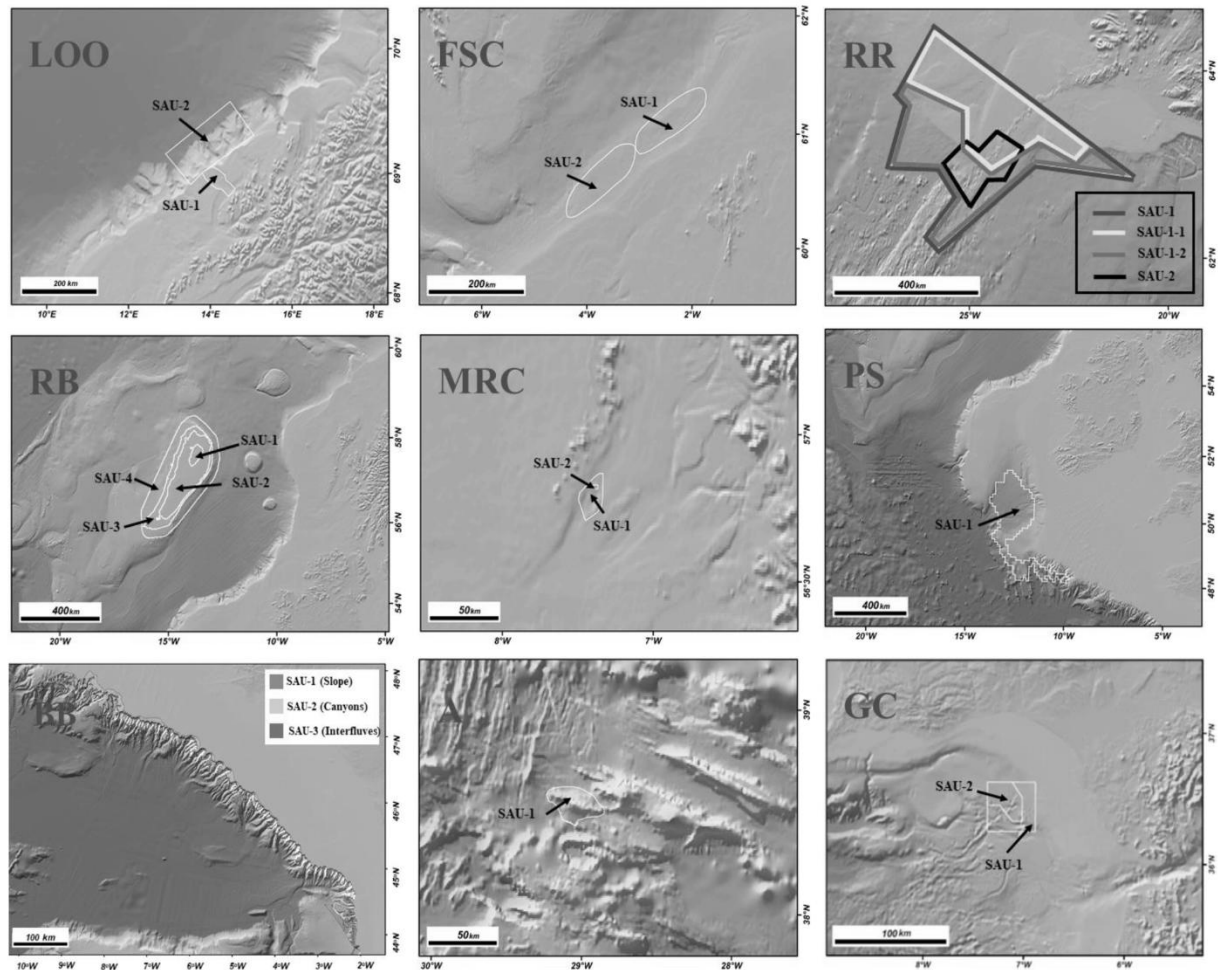


Fig. 2. Spatial Assessment Units (SAUs) in the nine ATLAS study areas. LOO: LoVe Ocean Observatory; FSC: Faroe-Shetland Channel; RR: Reykjanes Ridge; RB: Rockall Bank; MRC: Mingulay Reef Complex; PS: Porcupine Seabight; BB: Bay of Biscay; A: Azores, Condor seamount; GC: Gulf of Cádiz. The depth range of each SAU is included in Table 2.

Supplementary File for details). These combinations are called “indicator values” (according to Uusitalo et al., 2016) while “Biomass of selected fish species” is called a “unique indicator”. For example, the unique indicator “Biomass of selected fish species” had 36 indicator values across the Rockall Bank, one for each fish species, SAU, habitat and ecosystem component.

In order to assess the quality of the data submitted, information supplied by ATLAS experts was also considered for each study area in terms of: a) the representativity of the selected SAUs for the whole study area (poor/moderate/good), and b) the quality of the data (poor/acceptable/good). The evaluation and characterisation of the data quality were based on the long-term experience of the ATLAS case study leaders, taking into account parameters such as the methods used for the collection of data and the spatial coverage. Quality of the data as well as their type, quantity and spatial coverage were used to describe the representativity. These quality checks are not a prerequisite of NEAT, but it was set within the ATLAS assessment to achieve a more robust evaluation of the results.

2.2.3. Data analyses and evaluation of results

Once the data collection was completed, the boundary values set for each indicator were transformed into a common scale of environmental status given in NEAT (bad 0–0.199; poor 0.200–0.399; moderate 0.400–0.599; good 0.600–0.799; high 0.800–1.000) transforming them linearly onto a normalized common scale (Berg et al., 2016). The normalization of boundary values is followed by weighting of the size of

the SAUs and indicators by NEAT. The weighting process takes into consideration the size of the SAUs that exist in the assessment. For example, the parental SAU of Bay of Biscay (= 20308 km²) is divided into SAU-1 (slope; 4118 km²), SAU-2 (canyons; 10654 km²) and SAU-3 (interfluves; 5536 km²). The difference in size between the three SAUs is considered in the assessment of the environmental status of the parental SAU (20.3, 52.5 and 27.3%, respectively). Indicator weighting also takes place to balance the assessments where there are more indicators in one habitat than in others (e.g. five indicators in the pelagic habitat vs. one indicator in the benthic habitat). In this study the analysis was performed with NEAT default settings “Weight by SAU Area” and “Do not weight by habitat area”. This was done because data was available for the size of the SAUs (Table 2) but not for the size of benthic habitats (due to the lack of habitat maps in some areas). The NEAT value is calculated as the weighted average of all the indicators and is expressed with a value between 0 (bad) and 1 (high) (see above). NEAT values are accompanied by confidence level assessments based on mean and error values provided for each indicator followed by 1000 Monte Carlo simulations (Berg et al., 2016).

The results produced by applying NEAT were evaluated by ATLAS experts, considering the following aspects: i) level of agreement between the NEAT outcome and expert judgement, ii) level of satisfaction regarding the amount/type/quality/time frame/spatial extension of the submitted data and confidence on the boundary values set for each of the indicators, and iii) existing knowledge from scientific literature and previous surveys in the study areas. The listing of agreement was set as

Table 2

Habitats and ecosystem components, addressed in each of the nine ATLAS study areas. Areal size of each case study and spatial assessment units (SAUs; km²) within each case study, are also given. Categories for habitats and ecosystem components were established depending on the data available for each study area. For example, when information was available it was possible to set up “aggregations of cold-water corals” as a habitat and not just “benthic”. “*L. pertusa*”: *Lophelia pertusa*; “*M. oculata*”: *Madrepora oculata*.

Study area	Total extension of study area (km ²)	SAUs size (km ²)	Depth range (m)	Criteria used for the setup of SAUs	Representativity of SAUs for the study area	Habitats	Ecosystem components
LoVe Ocean Observatory	3250	SAU-1: 350 SAU-2: 2900	SAU-1: 200-260 SAU-2: 200-260	Protection status Geomorphology Data availability	SAU-1: Good SAU-2: Good	Benthic	Benthic invertebrates Benthos
Faroe-Shetland Channel	5278	SAU-1: 2639 SAU-2: 2639	SAU-1: 450-523 SAU-2: 497-715	Data availability	SAU-1: Good SAU-2: Good	Benthic	Benthic invertebrates Benthos Fish
Reykjanes Ridge	34608	SAU-1: 30092 SAU-1-1: 14946 SAU-1-2: 15146 SAU-2: 4516	SAU-1: 200-500 SAU-2: 200-500	Data availability	SAU-1: Poor SAU-1-1: Poor SAU-1-2: Poor SAU-2: Poor	Benthic	Benthos Fish
Rockall Bank	40798	SAU-1: 1274 SAU-2: 13932 SAU-3: 7501 SAU-4: 18091	SAU-1: 0-150 SAU-2: 151-250 SAU-3: 251-350 SAU-4: >351	Bathymetry Data availability	SAU-1: Good SAU-2: Good SAU-3: Poor SAU-4: Poor	Benthic	Benthic invertebrates Benthos Fish
Mingulay Reef Complex	115	SAU-1: 115 SAU-2: 11	SAU-1: 120-190 SAU-2: 120-190	Data availability	Good	Benthic	Benthic invertebrates Benthos Fish
Porcupine Seabight	35500	SAU-1: 35500	SAU-1: 1500-2500	Data availability	Moderate	Benthic	Benthos
Bay of Biscay	20308	SAU-1 (Slope): 4118 SAU-2 (Canyons): 10654 SAU-3 (Interfluves): 5536	SAU-1: 368 SAU-2: 1194 SAU-3: 1100 (average depths)	Geomorphology Bathymetry Human pressures Data availability	Poor	<i>L. pertusa</i> / <i>M. oculata</i> on hard substrates, <i>L. pertusa</i> / <i>M. oculata</i> on soft sediments, Sea pens/Alcyonaceans on soft sediments, Antipatharians/Alcyonaceans on hard substrates, Benthic	Benthic invertebrates Benthos
Condor seamount, Azores	280	SAU-1: 280	SAU-1: 250-600	Data availability	Good	Benthic	Fish
Gulf of Cádiz	1810	SAU-1: 1059 SAU-2: 751	SAU-1: 258-900 SAU-2: 450-700	Human pressures Data availability	SAU-1: Good SAU-2: Good	Benthic, Rocky, Sedimentary	Benthic invertebrates Benthos

follows: “complete”, “good”, “moderate”, “little” and “not at all”. Furthermore, recommendations were provided by experts on various aspects (e.g. how to improve the NEAT software, the data availability and the data quality in the future) in order to improve our understanding about the environmental status of deep-sea ecosystems.

3. Results

3.1. Assessment of the design

The number of SAUs within each study area varied widely ranging from one, e.g. in Condor seamount (Azores) up to four in the Rockall Bank. In seven out of nine study areas, the parental SAUs were split into subunits (Table 2). The representativity of the SAUs for the study areas was characterized as “good” in five areas: the LoVe Ocean Observatory, Faroe-Shetland Channel, Mingulay Reef Complex, Condor seamount (Azores), and the Gulf of Cádiz; “moderate” in one area: Porcupine Seabight, and “poor” in two areas: Reykjanes Ridge and Bay of Biscay. In Rockall Bank there were differences among the SAUs regarding the representativity i.e. the representativity was good in SAU-1 and SAU-2 but poor in SAU-3 and SAU-4 (Table 2).

In seven out of nine areas only one habitat type was assessed i.e. “Benthic”. Nevertheless, higher resolution data were available in the Bay of Biscay and the Gulf of Cádiz. Specifically, data on the habitats

“*Lophelia pertusa* (now known as *Desmophyllum pertusum*)/*Madrepora oculata* on hard substrates”, “*L. pertusa*/*M. oculata* on soft sediments”, “Sea pens/Alcyonaceans on soft sediments”, “Antipatharians/Alcyonaceans on hard substrates” were analyzed in the Bay of Biscay while “rocky” and “sedimentary” benthic habitats were assessed in the Gulf of Cádiz (Table 2).

In total, three ecosystem components were assessed i.e. “benthic invertebrates”, “fish” and “benthos”. “Benthic invertebrates” were used in those cases where a linkage with a specific faunal group could take place (e.g. corals, sponges) while “benthos” was used in those cases where such a specific linkage was not possible (e.g. when using indicators like “Areal extent of human affected area”, or “Areal extent of litter”). Due to limited data availability all three ecosystem components were not assessed consistently across all the nine study areas. For example, the only ecosystem component assessed in the Condor seamount (Azores) was “fish” while “benthic invertebrates”, “fish” and “benthos” were assessed in Mingulay Reef Complex (Table 2; see also Table 1 in Supplementary File for a detailed description of all ecosystem components and their links with SAUs and habitats).

3.2. Indicators across Descriptors, criteria and study areas

In total, 24 unique indicators were used across the five descriptors (Table 3); one for D1, one for D3, seven for D4, 13 for D6 and two for

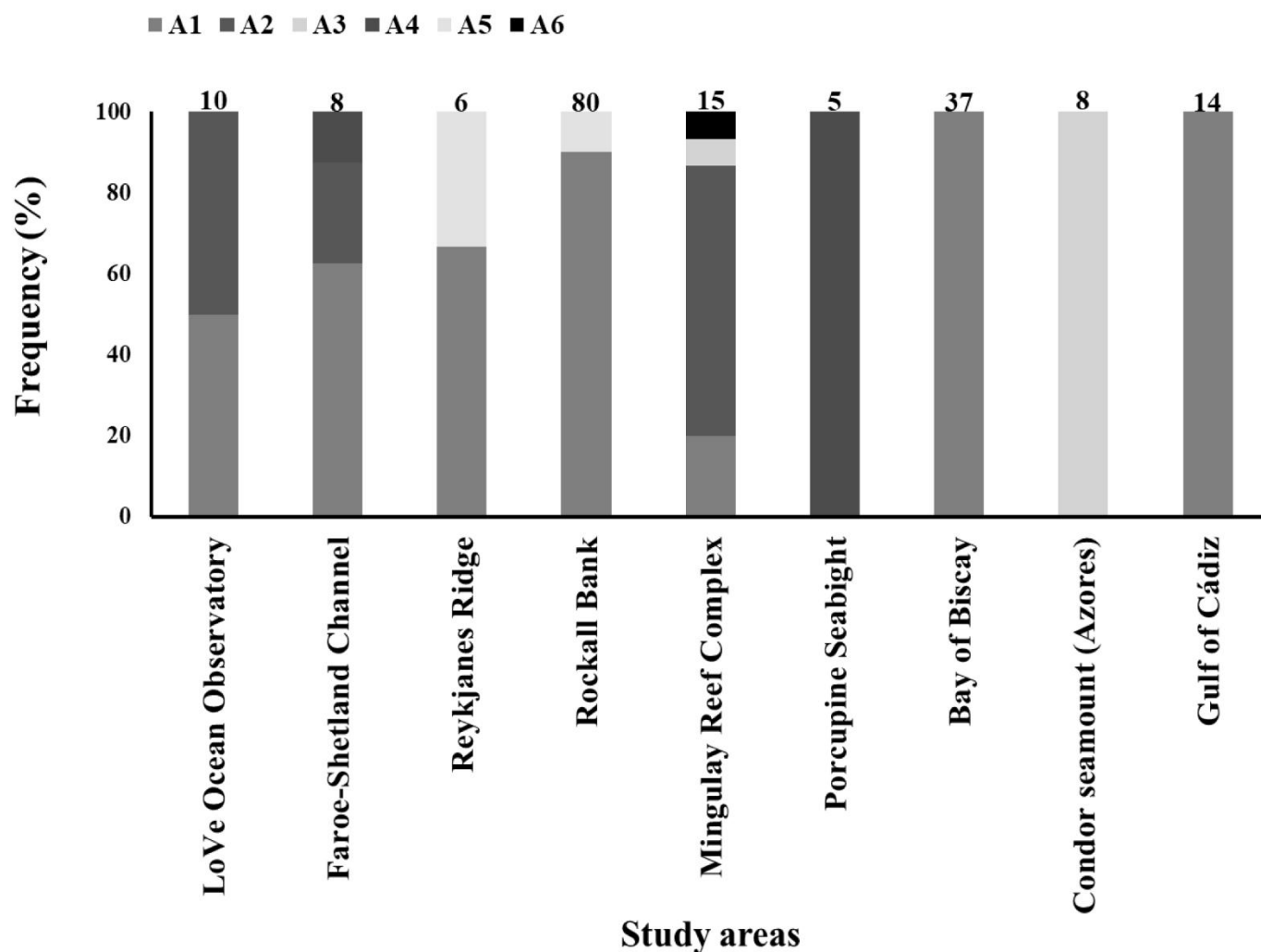


Fig. 3. Set up of boundary values considering the relative frequency (%) of the different approaches used across the nine study areas (organized latitudinally from North to South). A1: Expert judgement only; A2: Expert judgement and use of scientific literature/information from other places or comparison with protected areas; A3: Expert judgement and national/regional legislation; A4: Expert judgement and OSPAR guidance; A5: Expert judgement and guidance/data from United Nations' Convention on Biological Diversity (CBD)/United Nations' Framework Convention on Climate Change Decision /International Council for the Exploration of the Sea; A6: National legislation only. The number of indicator values in each study area are shown on the top of the bars.

D10. Indicators used more frequently were: “Areal extent of human-affected area” (used in eight out of nine study areas), “Areal extent of protected sea areas” (applied in six areas) and “Density of biogenic reef-forming species” (used in four areas).

These 24 indicators addressed a total of eight criteria from the GES Decision (European Commission, 2017) (Table 3). Criterion D6C5 (extent of adverse effects from anthropogenic pressures on the condition of the habitat type; see Table 3 for a detailed description of the criteria) was the one with the highest number of indicators ($n = 9$) addressing it. It was followed by Criterion D4C1 (diversity of trophic guilds) addressed by seven indicators and Criterion D6C2 (spatial extent and distribution of physical disturbance) addressed by two indicators. Five criteria were addressed by only one or two indicators (Table 3). Differences in the development of methodological standards for the MSFD descriptors do not always allow for a direct allocation of the case studies' indicators to MSFD criteria. In such cases, the indicators could work as proxies for the criteria assessments and contribute to the open debates for the proper indicators per MSFD criterion. Most of the indicators were used in a relatively small number of areas and a few indicators were more broadly used (Table 3). Specifically, five indicators were used only in two areas (e.g. “Biomass of selected fish species” in Rockall Bank and in the Condor seamount, Azores; “Species richness of non-commercial fish” in Rockall Bank and in Mingulay Reef Complex),

three indicators in three areas (e.g. “Ratio of live versus dead/overgrown coral cover” in LoVe Ocean Observatory, in Mingulay Reef Complex and in Bay of Biscay) while 13 indicators were applied only once (e.g. the indicator “Body length distribution of fish” was only used in Condor seamount (Azores); the indicator “Density of abandoned fishing gear (e.g. lines, nets, etc.)” was only used in Bay of Biscay (Table 3).

3.3. Data quantity and quality across indicators, descriptors and study areas

The number of indicator values ranged from 1 to 40. The highest number of indicator values was for the indicator “Biomass of selected fish species” followed by “Abundance of non-commercial demersal fish and cephalopods” and “Areal extent of human affected area” (Fig. 4A). Across the study areas the highest number of indicator values were provided for Rockall Bank ($n = 80$; 30% in D1 indicators, 60% in D4, 10% in D6) followed by the Bay of Biscay ($n = 37$; 18.9% in D4 indicators, 64.9% in D6 and 16.2% in D10) and the Mingulay Reef Complex ($n = 15$; 40% in D4 indicators, 53.3 in D6 and 6.7% in D10) (Fig. 4B). The level of satisfaction regarding the quantity of the data was moderate for most study areas (LoVe Ocean Observatory, Faroe-Shetland Channel, Rockall Bank, Porcupine Seabight, Bay of Biscay,

Table 3

Summary of information used per descriptor (D1, D3, D4, D6, D10), unique indicator and measurement units across nine study areas. CPUEb: Catch Per Unit Effort in Biomass; VMES: Vulnerable Marine Ecosystems; VMS: Vessel Monitoring System; ICES: International Council for the Exploration of the Sea. New indicators suggested by ATLAS are highlighted in grey.

Descriptor	Unique indicator	Criterion ¹	LoVe Ocean Observatory	Faroe-Shetland Channel	Reykjanes Ridge	Rockall Bank	Mingulay Reef Complex	Porcupine Seabight	Bay of Biscay	Condor seamount, Azores	Gulf of Cádiz
D1	Abundance of non-commercial demersal fish and cephalopods (1)	D1C2				Mean number/30 min trawl					
D3	Body length distribution of fish (2)	D3C3								Length cm (total or fork depending on the species)	
D4	Species richness of non-commercial fish (3)	D4C1				Species richness/area (km ²)	Mean species richness/km				
D4	Species richness of corals (4)	D4C1							Coral taxa/image (approx. 3m ²)		
D4	Species richness of benthos (5)	D4C1				Species richness/area (km ²)					
D4	Species diversity (Shannon index) of non-commercial fish (6)	D4C1			Shannon Index	Shannon index					
D4	Abundance of commercial fish (7)	D4C1					Individuals/km				
D4	Biomass of demersal fish (8)	D4C1		Demersal landings (tons) from Scottish waters/ICES statistical rectangle (2012-2016)							
D4	Biomass of selected fish species (9)	D4C1				Mean biomass (kg)/30 min trawl				CPUEb (kg fish/1000 hooks)	
D6	Fishing effort (10)	D6C2									Number of hauls/km ² /year
D6	Areal extent of human affected area (11)	D6C2	% of seafloor	% of seafloor	% of seafloor	Area (km ²) where surface swept area ratio is > 0.2 (or, one fifth of the cell)	% (open to static gear)	Swept area ratio	% of seafloor		% trawled area
D6	Areal extent of protected sea areas (12)	D6C5	% of seafloor	% of seafloor	% of seafloor	Area (km ²)	% (completely closed to all gears)		% of seafloor		
D6	Number of size cohorts within a population (13)	D6C3		Number of size cohorts							
D6	Areal extent of biogenic/vulnerable habitats (type, abundance, biomass, condition and areal extent of relevant biogenic substrata) (14)	D6C5	% of seafloor				Area covered by live coral, coral rubble (km ²)		% of seafloor		
D6	Areal extent of rocky seafloor/vulnerable habitats (type, abundance, biomass, condition and areal extent of relevant sedimentary communities) (15)	D6C5							% of seafloor		
D6	Areal extent of sedimentary seafloor/vulnerable habitats (type, abundance, biomass, condition and areal extent of relevant sedimentary communities) (16)	D6C5					Area covered by live coral, coral rubble (km ²)		% of seafloor		
D6	Distribution and condition of habitat forming species (17)	D6C5					Area covered by coral mini-mounds (km ²)				

(continued on next page)

Table 3 (continued)

D6	VMEs and VME indicator taxa (status, areal extent, size-frequency distribution) (18)	D6C5					Number of VME indicator taxa/km ²				
D6	Abundance of coral colonies alive (19)	D6C5	% of seafloor						% of seafloor		
D6	Abundance of corals (excluding reef building corals) (20)	D6C5							Coral colonies/image		
D6	Density of biogenic reef forming species (type, abundance, biomass and areal extent of relevant biogenic substratum per habitat type) (21)	D6C5	% of seafloor	Ind./m ²			Area covered by live coral (km ²)				Number of colonies/m ² (for 5 taxa)
D6	Ratio of live versus dead/overgrown coral cover (22)	D6C4	Ratio live/dead coral cover				Ratio live/dead coral cover		Ratio live/dead coral cover		
D10	Areal extent of litter: Type (e.g. plastic, glass)/abundance/density/weight (23)	D10C1		Items/km ²			Number of records of marine litter (number of items/minute of video tow)		Litter/image		
D10	Density of abandoned fishing gear (e.g. lines, nets, etc.) (24)	D10C1							Fishing gear/image		
Total number of indicators	24		6	6	3	7	11	1	11	2	3

¹Criteria in EU, 2017. **D1C2**: The population abundance of the species is not adversely affected due to anthropogenic pressures, such that its long-term viability is ensured. **D3C3**: The age and size distribution of individuals in the populations of commercially exploited species is indicative of a healthy population. This shall include a high proportion of old/large individuals and limited adverse effects of exploitation on genetic diversity. **D4C1**: The diversity (species composition and their relative abundance) of the trophic guild is not adversely affected due to anthropogenic pressures. **D6C2**: Spatial extent and distribution of physical disturbance pressures on the seabed. **D6C3**: Spatial extent of each habitat type which is adversely affected, through change in its biotic and abiotic structure and its functions (e.g. through changes in species composition and their relative abundance, absence of particularly sensitive or fragile species or species providing a key function, size structure of species), by physical disturbance. **D6C4**: The extent of loss of the habitat type, resulting from anthropogenic pressures, does not exceed a specified proportion of the natural extent of the habitat type in the assessment area. **D6C5**: The extent of adverse effects from anthropogenic pressures on the condition of the habitat type, including alteration to its biotic and abiotic structure and its functions (e.g. its typical species composition and their relative abundance, absence of particularly sensitive or fragile species or species providing a key function, size structure of species), does not exceed a specified proportion of the natural extent of the habitat type in the assessment area. **D10C1**: The composition, amount and spatial distribution of litter on the coastline, in the surface layer of the water column, and on the seabed, are at levels that do not cause harm to the coastal and marine environment.

Condor seamount (Azores) and Gulf of Cádiz); there was good (but incomplete) satisfaction at the Mingulay Reef Complex and little satisfaction for the Reykjanes Ridge.

The quality of the data across indicators, descriptors and study areas was variable (Fig. 5). For 12 indicators the data quality was considered mainly “poor”, for eight indicators was either “acceptable” or “good” and for the rest four it was balanced across “poor”, “acceptable” and “good” (Fig. 5A). Across the study areas the data quality was characterized mainly as “poor” in the Bay of Biscay. For the LoVe Ocean Observatory, Mingulay Reef Complex and the Gulf of Cádiz the data quality was considered mainly “acceptable” while in the Faroe-Shetland Channel, Reykjanes Ridge, Porcupine Seabight and the Condor seamount (Azores), the quality of the data was considered mainly “good” (Fig. 5B).

3.4. NEAT results for environmental status and comparison with expert judgement

The results of the NEAT analyses revealed differences among the study areas for their environmental status (Tables 4-5). Areas where more indicator values were used showed a higher number of categories of environmental status than areas where less indicator values were used. For example, at Rockall Bank, where 80 indicator values were used, five categories of environmental status were identified (i.e. bad, poor, moderate, good and high) while in the Condor seamount (Azores) where four indicator values were used just one category of environmental status was found (Fig. 6). The assessment suggested that the SAUs of the LoVe Ocean Observatory, Faroe-Shetland Channel, deep Porcupine Seabight, Bay of Biscay and Condor seamount (Azores) (after fisheries closure) were in good status (Tables 4-5), while those of the Reykjanes Ridge, Rockall Bank, Mingulay Reef Complex, Azores (before

fisheries closure) and Gulf of Cádiz were not in good status (Tables 4-5). There was good agreement between the NEAT results and expert judgement for the LoVe Ocean Observatory, Faroe-Shetland Channel, Reykjanes Ridge and Porcupine Seabight but the agreement was just moderate for the Rockall Bank, Mingulay Reef Complex, Condor seamount (Azores) and Gulf of Cádiz. For the Bay of Biscay no judgement was expressed (Table 4).

Habitats were assessed to be in different environmental status across the study areas. The environmental status of “Benthic” habitats (i.e. the habitat with the highest number of indicator values) ranged from bad to high environmental status. Specifically, the NEAT suggested a balance between habitats in good status (specifically, 18.2% in high and 27.3% in good) and habitats in non-good status (27.3% in moderate, 22.7% in poor and 4.5% in bad environmental status) (Table 5; see also Fig. 1 in Supplementary File). The habitats in five study areas (i.e. LoVe Ocean Observatory, Faroe-Shetland Channel, Porcupine Seabight, Bay of Biscay, Condor seamount-after fisheries closure) were assessed to be mainly in good status. In the remaining areas (Reykjanes Ridge, Rockall Bank, Mingulay Reef Complex, Condor seamount (before fisheries closure) and Gulf of Cadiz areas impacted by trawling activity, habitats mainly were not in good status (Table 5; see also Fig. 1 in Supplementary File).

Ecosystem components were suggested to be in different environmental status across the study areas. The NEAT suggested that the status of “benthic invertebrates” ranged from moderate to high while both “fish” and “benthos” components ranged across all five categories of environmental status. Most “fish” components were assessed to be in moderate or poor status (58% in total) while most “benthos” components were in good or high status (61.1% in total) (Table 5; see also Fig. 2 in Supplementary File). The study areas displayed a wide range of environmental status for their ecosystem components; for instance at

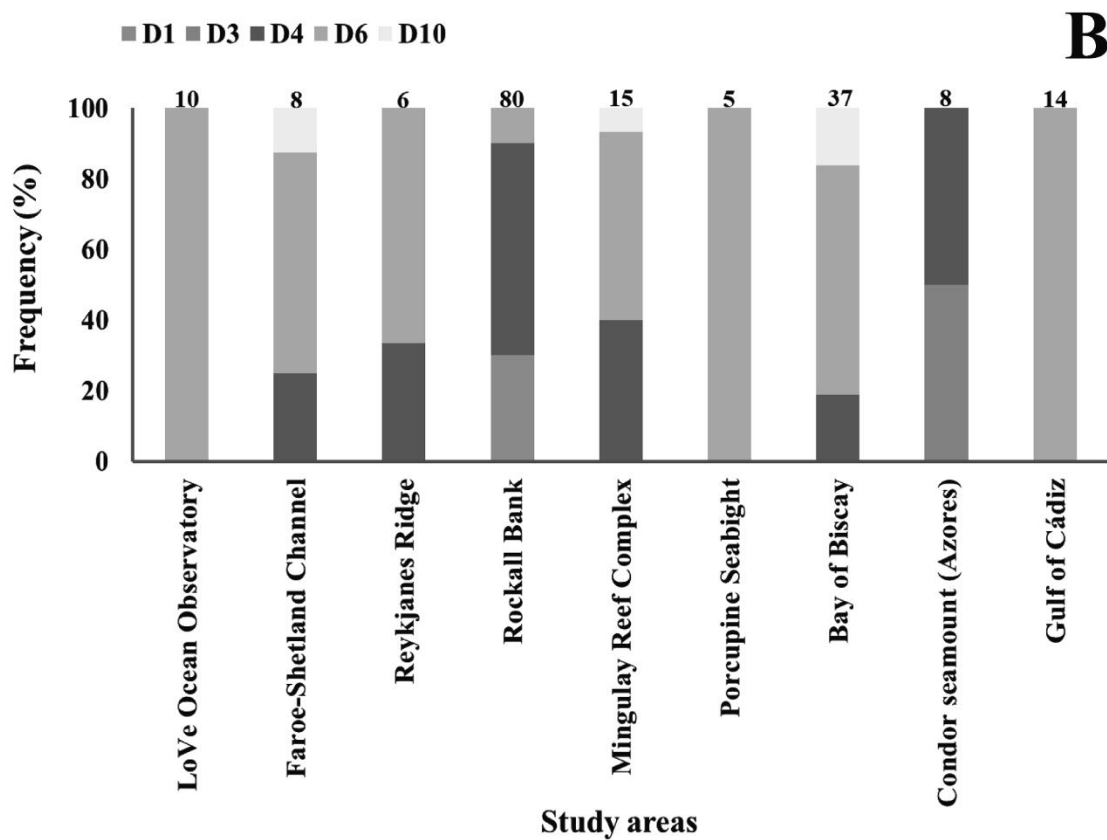
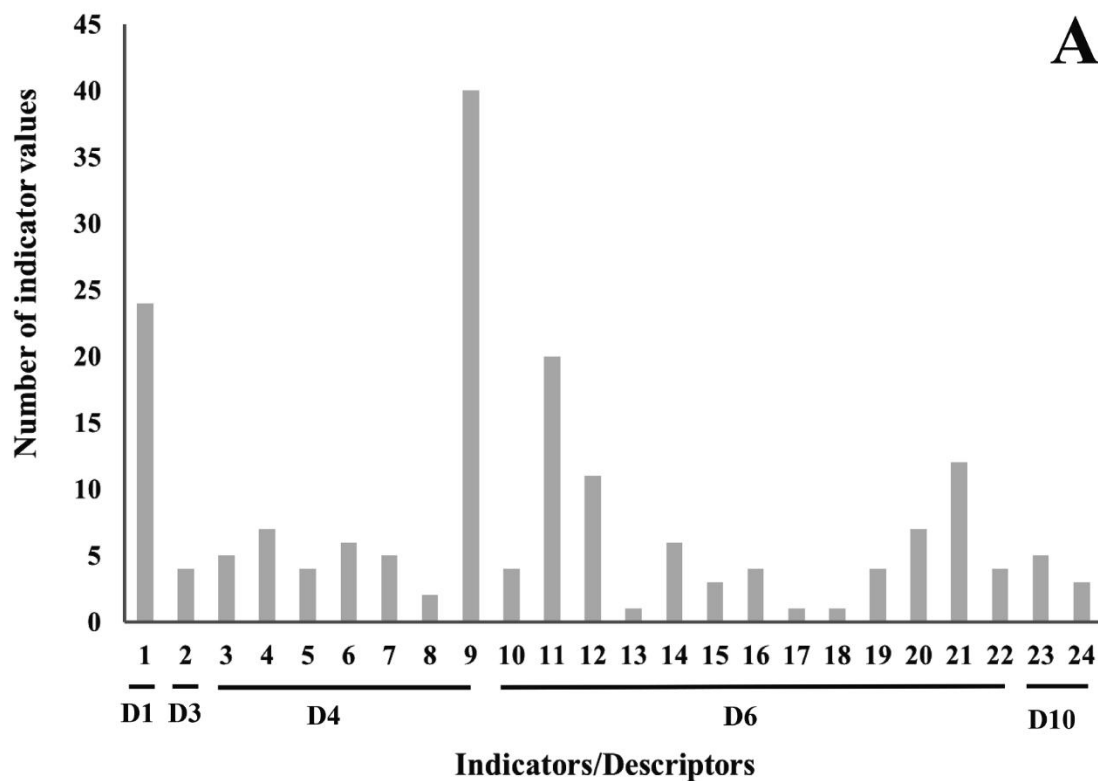


Fig. 4. Data quantity across indicators, descriptors (A) and study areas (B). In (A) each number on the x-axis represents an indicator (see Table 3 for the corresponding indicator name). In (B) the number of indicator values in each study area is shown on the top of the bars.

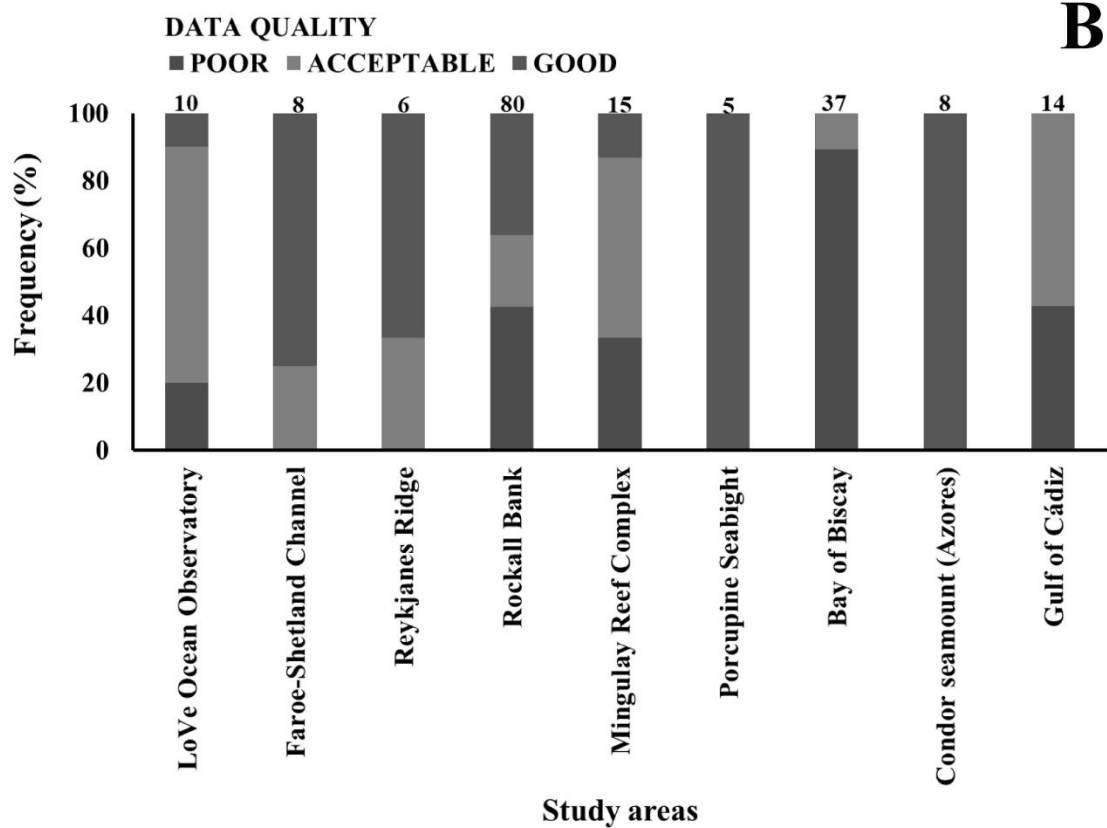
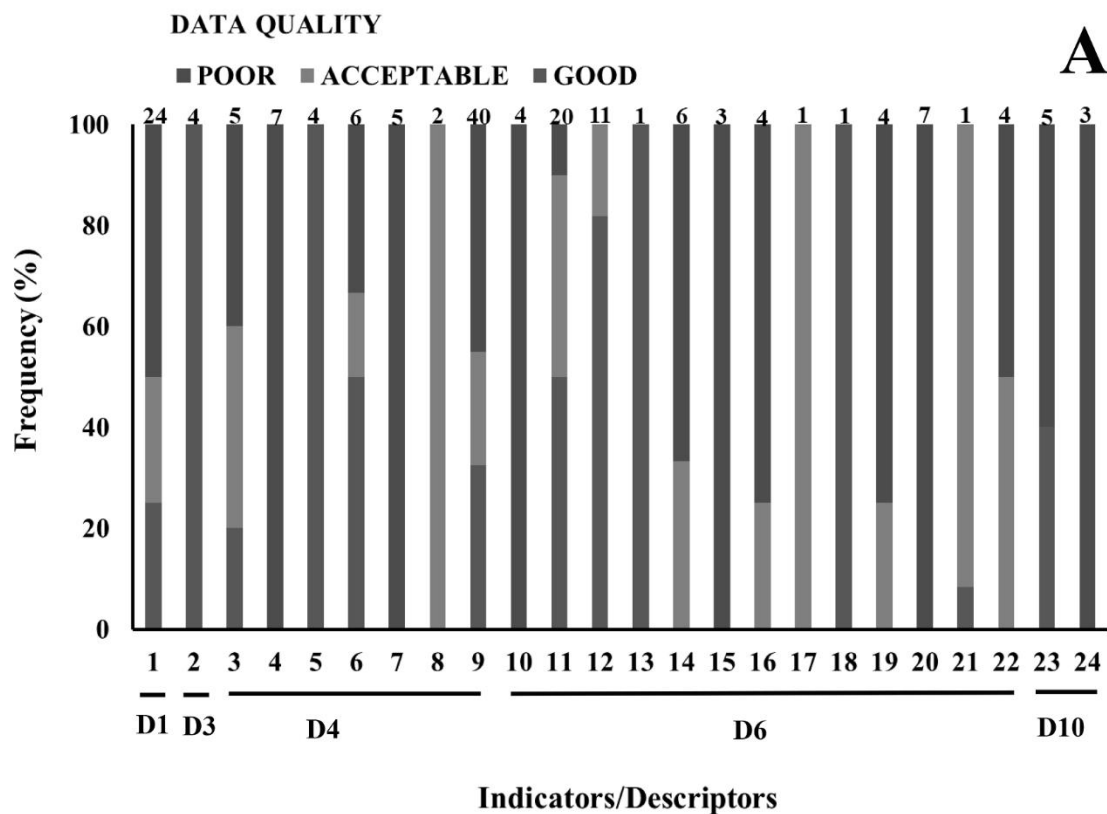


Fig. 5. Data quality (“poor”, “acceptable” and “good”) expressed in % across indicators and descriptors (A) and across study areas (B). In (A) each number on the x axis represents an indicator (see Table 3 for the corresponding indicator name). In (B) the number of indicator values in each study area is shown on the top of the bars.

Table 4

NEAT values, environmental status and level of agreement between NEAT results and expert judgment for the nine study areas in the North Atlantic. NEAT values are given for the whole study area. Categories of environmental status: bad 0–0.199; poor 0.200–0.399; moderate 0.400–0.599; good 0.600–0.799; high 0.800–1.000.

Study area	NEAT value	Environmental status of whole study area as assessed by NEAT	Level of agreement between expert judgment and NEAT assessment for environmental status
LoVe Ocean Observatory	0.616	Good	Complete agreement
Faroe-Shetland Channel	0.819	High	Good agreement
Reykjanes Ridge	0.549	Moderate	Good agreement
Rockall Bank	0.313	Poor	Moderate agreement
Mingulay Reef Complex	0.272	Poor	Moderate agreement
Porcupine Seabight	0.980	High	Good agreement
Bay of Biscay	0.717	Good	Judgement not expressed
Condor seamount, Azores (before fisheries closure)	0.510	Moderate	Moderate agreement
Condor seamount, Azores (after fisheries closure)	0.683	Good	Moderate agreement
Gulf of Cádiz	0.477	Moderate	Moderate agreement

the LoVe Ocean Observatory 50% were in moderate and 50% in high status whereas in the Rockall Bank all five categories of environmental status were found (16.7% in high, 33.3% in good, 8.3% in moderate, 25% in poor and 16.7% in bad status) (Table 5; see also Fig. 2 in Supplementary File). In Porcupine Seabight, Bay of Biscay and Mingulay Reef Complex the ecosystem components were assessed to be mainly in good or high status while in the rest of the study areas they were not (Table 5; see also Fig. 2 in Supplementary File).

4. Discussion

4.1. Assessing the assessment design, quantity and quality of data

Data availability for this analysis was much lower than previous analyses using the NEAT in shallow European seas, as expressed through comparisons of SAUs, habitats, ecosystem components, unique indicators, and indicator values. This is mainly due to the remoteness of deep-sea environments. It should also be taken into account that there is a smaller number of species in the deep sea than on continental shelves due to the lower temperature, productivity, and habitat heterogeneity in the deep sea (Costello and Chaudhary, 2017). In the analyses performed here, there were two hierarchical levels in most cases whereas in some coastal areas studied by Uusitalo et al. (2016) there were often three to four hierarchical levels of SAUs, up to nine habitats and up to nine ecosystem components. Likewise, the number of unique indicators and indicator values in shallow waters were much higher ranging from 11 to 116 and 20 to 466 per study area, respectively (Uusitalo et al., 2016; Pavlidou et al., 2019) compared to the range of 1–11 unique indicators and 1–40 indicator values in our study. Considering these limitations, data analyses and boundary values set-up here (see Section 4.2) have been performed with caution, following Uusitalo et al. (2016); the same applies to the interpretation of the NEAT outcomes especially in those cases where a small number of indicator values were linked to large SAUs (e.g. the Porcupine Seabight

where five indicator values were used over an area of 35500 km²). The cautious interpretation of the results was supported also by considering a) ATLAS experts' judgement, b) results from previous assessments (e.g. OSPAR, 2017) and c) information on the areas gathered from the scientific literature for North Atlantic deep-sea areas (see below).

Given the large differences among study areas in terms of their size, data availability and limited knowledge on the ecology of species/habitats and their response to human activities, comparisons of environmental status between study areas are currently of limited value. However, comparisons of environmental status of SAUs/habitats/components within each study area can be made especially in cases where there are gradients of human pressures (e.g. the Gulf of Cádiz) or when management measures have been implemented (e.g., in Condor seamount, Azores).

In addition to limited data availability, there was also limited data standardization for almost all the indicators selected (Table 3). For example, for the indicator "Areal extent of litter" measurements units were "Items/km²", "Number of items/minute of video tow" and "Litter/image". This highlights the need to increase standardization in quantification and reporting of marine litter (OSPAR, 2017). A similar situation was also recorded for the units used to express density of specimens (Table 3). ATLAS experts also identified cases of limited data quality for some indicators. Specifically, in LoVe Ocean Observatory and Bay of Biscay the low quality of the data was due to technical issues (e.g. absence of laser points from the Remotely Operated Vehicles (ROV) cameras, hampering image scalation) that did not allow the quantification of ecosystem components. In the case of Mingulay Reef Complex, data on fish assemblages were collected with a ROV which, in general, is not the most appropriate method to measure fish species richness, abundance and biomass due to avoidance behaviour of objects like large ROVs (Andaloro et al., 2013). This combined with limited visibility during ROV dives at Mingulay Reef Complex (Milligan et al., 2016), helps explain why species richness and abundance of fish in that area was lower than in other CWC reefs where trawling/baited traps

Table 5
Assessment of the environmental status in nine study areas in the North Atlantic. Results are given for each study area, spatial assessment units (SAUs), habitat and ecosystem component. Explanation of colour code for each of the five categories of environmental status defined by the NEAT software: blue: high; green: good; yellow: moderate; orange: poor; red: bad. "L. pertusa": *Lophelia pertusa*, "M. oculata": *Madrepora oculata*.

Spatial Assessment Units (SAUs)	Area (km ²)	Total SAU weight	NEAT value for SAUs	Environmental status for SAUs	Confidence level for the assessment (%)	Benthic invertebrates	Fish	Benthos	<i>L. pertusa</i> on soft sediments	Sea pens- alcyonaceans on soft sediments	<i>L. pertusa</i> on hard substrates	Antipatharians- alcyonaceans on hard substrates	Benthic	Rocky	Sedimentary
LoVe Ocean Observatory															
SAU-Total	3250		0.616	Good	49.7	0.418		0.814					0.616		
SAU-1	350	0.108	0.750	Good	100	0.567		0.933					0.750		
SAU-2	2900	0.892	0.600	Good	44.8	0.400		0.800					0.600		
Faroe-Shetland Channel															
SAU-Total	5278		0.819	High	99.0	0.860	0.526	1.000					0.819		
SAU-1	2639	0.500	0.851	High	100	0.860	0.386	1.000					0.851		
SAU-2	2639	0.500	0.786	Good	99.5		0.572	1.000					0.786		
Reykjanes Ridge															
SAU-Total	34608		0.549	Moderate	92.6		0.702	0.431					0.549		
SAU-1	30092	0.435	0.581	Moderate	67.3		0.702	0.460					0.581		
SAU-1-1	14946	0.216	0.544	Moderate	70.9		0.544						0.544		
SAU-1-2	15146	0.219	0.858	High	70.4		0.858						0.858		
SAU-2	4516	0.130	0.333	Poor	100			0.333					0.333		

(continued on next page)

Table 5 (continued)

Spatial Assessment Units (SAUs)	Area (km ²)	Total SAU weight	NEAT value for SAUs	Environmental status for SAUs	Confidence level for the assessment (%)	Benthic invertebrates	Fish	Benthos	<i>L. pertusata-M. oculata</i> on soft sediments	Sea pens-alcyonaceans on soft sediments	<i>L. pertusata-M. oculata</i> on hard substrates	Antipatharians-alcyonaceans on hard substrates	Benthic	Rocky	Sedimentary
Rockall Bank															
SAU-Total	40797		0.313	Poor	100	0.600	0.248	0.604					0.313		
SAU-1	1274.353	0.031	0.283	Poor	100	0.600	0.281	0.000					0.283		
SAU-2	13931.48	0.341	0.394	Poor	74.1	0.600	0.326	0.871					0.394		
SAU-3	7501.094	0.184	0.510	Moderate	100	0.600	0.455	0.826					0.510		
SAU-4	18090.87	0.443	0.171	Bad	100	0.600	0.091	0.396					0.171		
Mingulay Reef Complex															
SAU-Total	114.89		0.272	Poor	100	0.637	0.123	0.843					0.272		
SAU-1	114.89	0.91	0.272	Poor	100	0.637	0.123	0.843					0.272		
SAU-2	11.4	0.09	0.572	Moderate	100	0.637		0.507					0.572		
Porcupine Seabight															
SAU-Total	35500	1.00	0.980	High	100			0.980					0.959		1.000

(continued on next page)

Table 5 (continued)

Spatial Assessment Units (SAUs)	Area (km ²)	Total SAU weight	NEAT value for SAUs	Environmental status for SAUs	Confidence level for the assessment (%)	Benthic invertebrates	Fish	Benthos	<i>L. pertusoides</i> on soft sediments	Sea pens-alcyonaceans on soft sediments	<i>L. pertusoides</i> on hard substrates	Antipatharians-alcyonaceans on hard substrates	Benthic	Rocky	Sedimentary
Bay of Biscay															
SAU-Total	20308		0.717	Good	100	0.829		0.641	0.730	0.595	0.861	0.940	0.627		
SAU-1	4118	0.203	0.358	Poor	99.6			0.358	0.500	0.000			0.575		
SAU-2	10654	0.525	0.846	High	99.8	0.907		0.780	0.920	0.875	0.893	0.940	0.601		
SAU-3	5536	0.273	0.736	Good	100	0.667		0.801	0.664	0.754	0.811		0.716		
Condor seamount, Azores															
2009-Prior to fisheries closure															
SAU-1	280	1.000	0.510	Moderate	82.8		0.510						0.510		
2016-After fisheries closure															
SAU_1	280	1.000	0.683	Good	89.4		0.683						0.683		
Gulf of Cádiz															
SAU-Total	1810		0.477	Moderate	99.6	0.488		0.469					0.630	0.370	0.431
SAU-1	1059	0.585	0.614	Good	61.6	0.495		0.705					0.868	0.443	0.531
SAU-2	751	0.415	0.283	Poor	97.7	0.476		0.160					0.293	0.266	0.290

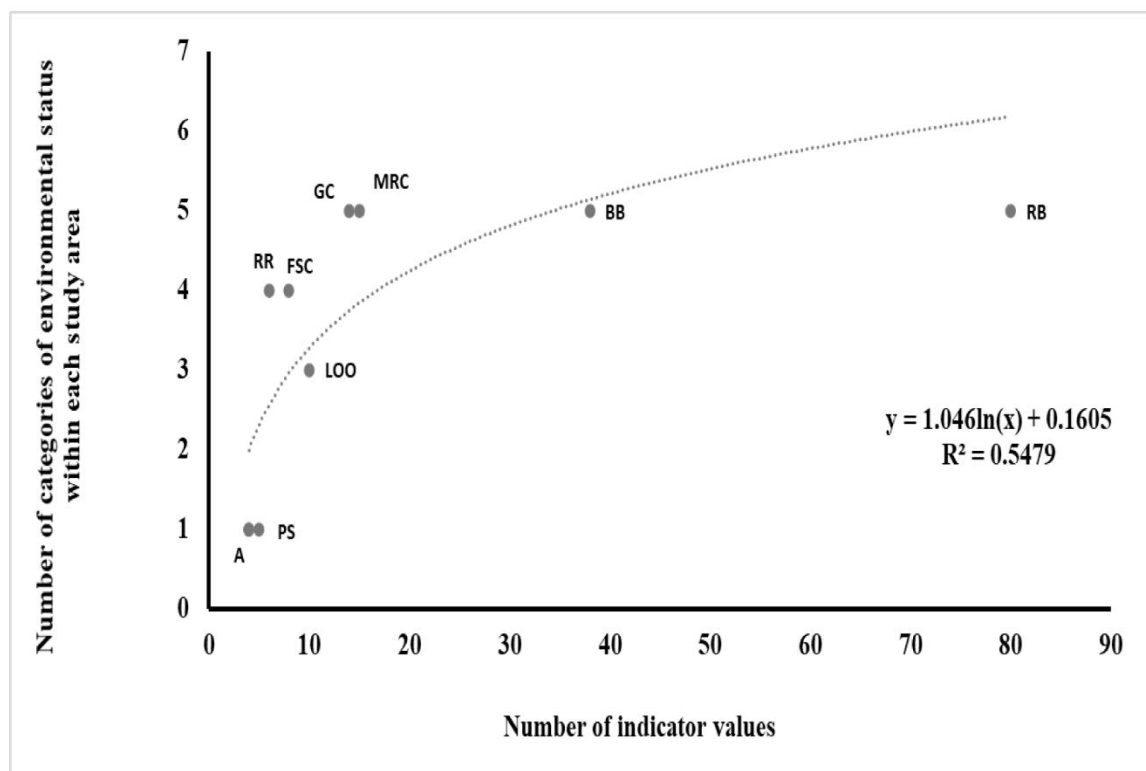


Fig. 6. Relationship between the number of indicator values and the number of categories of environmental status within each of the nine study areas. A: Azores, Condor seamount; BB: Bay of Biscay; FSC: Faroe-Shetland Channel; GC: Gulf of Cádiz; Loo: LoVe Ocean Observatory; MRC: Mingulay Reef Complex; PS: Porcupine Seabight; RB: Rockall Bank; RR: Reykjanes Ridge.

were used (Durán-Muñoz et al., 2012). However, as the Mingulay Reef Complex is a protected area, demersal fishing techniques are not permitted. Landers using time-lapse photography is an alternative and non-invasive methodology that could be used for assessing the abundance of fishes (Lavaleye et al., 2017). In the case of the Bay of Biscay and Rockall Bank the low quality of the data for the indicators “Areal extent of biogenic habitats” and “Abundance/biomass of fish” was due to the limited or non-homogeneously distributed sampling effort within the study areas, as noted by ATLAS experts working in the two areas. Beside these cases, there were others where the quality of data was mainly acceptable or good (Fig. 5A). Interestingly, the indicator “Areal extent of human affected area” was mainly composed from acceptable/good quality data across almost all the study areas confirming the good potential for this indicator to be used in environmental status assessments. On the contrary the indicator “Areal extent of biogenic/vulnerable habitats” were mainly characterized from poor-quality data (Fig. 5A) reflecting the current limited knowledge about the spatial distribution of these important habitats and the urgent need to increase the knowledge on spatial and temporal distribution of habitats (Georgian et al., 2019; Kenchington et al., 2019a; see Section 4.5). Across the study areas, acceptable and good-quality data were supplied mainly for the Faroe-Shetland Channel, the Reykjanes Ridge, the Porcupine Seabight and the Condor seamount (Azores) (Fig. 5B). In the Faroe-Shetland Channel the good quality of the data was mainly due to rigorously-designed towed camera surveys collecting high-quality video material from areas inside and outside the Faroe-Shetland Channel Marine Protected Area, that allowed quantitative analyses using collected image material (Kazanidis et al., 2019). Quantitative data available online for demersal fisheries inside and outside the FSC MPA (<https://marinescotland.atkinsgeospatial.com/nmpi/>) contributed also to this high data quality. In the Condor seamount (Azores) the collection of reliable measurements on fish body size and biomass of the commercially-important fishes *Helicolenus dactylopterus* and *Pagellus bogaraveo*

using appropriate sampling methods (long-line surveys) over the period 1983–2017 (with gaps) allowed the collection of high-quality data for the analyses. Vessel monitoring system (VMS) and electronic logbook data for the Reykjanes Ridge were available at very high spatial resolution (gridded as fine as 150x150 m) that allowed the collection of high-quality information. In Porcupine Seabight fishing pressure data were represented by swept area ratio collated in ICES (2016a, 2018) and calculated by analysis of VMS data.

4.2. Setup of boundary values for the assessment of environmental status

One of the biggest challenges in assessing deep-sea environmental status is the lack of baselines (i.e. specific and quantifiable reference points against which environmental status will be assessed) and the difficulties of setting boundary values (e.g. a threshold value defining a degree of deviation from the baseline) (Borja et al., 2012). Establishing methods to set boundary/threshold values for assessing GES is especially challenging for deep-sea ecosystems due to limited historical data availability which reduces confidence around the established boundary values.

In this study various approaches were used to create boundary values. These mainly relied upon “Expert judgement” followed by “Expert judgement and use of scientific literature/information from other places or comparison with protected areas” (Fig. 3; see also Table 1 in Supplementary File). Expert judgement/use of scientific literature were also used in previous studies assessing environmental status in areas inside (Uusitalo et al., 2016; Pavlidou et al., 2019) and outside Europe (Nemati et al., 2017) whereas Korpinen et al. (2013) followed the EU Habitats Directive (European Union, 1992) in their assessment of Baltic Sea assuming 25% of the seafloor being under significant impacts as a threshold value for the assessment of environmental status of soft and hard substrates.

Another approach for setting a baseline is using past conditions and

historic data i.e. the status of an area before the occurrence of human activities and their impacts (Borja et al., 2012). Unfortunately, this type of information is almost non-existent in the deep sea, even for the northeast Atlantic, the region with the longest tradition in deep-sea biology studies. A telling example is the Bay of Biscay where trawling on the slope began a century ago (Joubin, 1922) and the first biological data produced by the oceanographic expeditions go back in the 19th century (Le Danois, 1948); however, this information unfortunately does not meet required standards (e.g. presence of quantitative data) necessary to establish a baseline.

Long-term time series through which a past date/period can be considered as a baseline could also be used (OSPAR, 2017; Hartman et al., 2012 for the Porcupine Abyssal Plain Sustained Observatory fixed-point time-series). Although long-term data (e.g. > 10 years) in the deep sea are very limited, some exceptions exist: for example, the 30-year time series of fishery data available from Rockall Bank. This offers information on fish body length and abundance. However, even in that case the establishment of boundary values for assessing the environmental status is problematic as there is limited understanding about the role of environmental natural variability [e.g. type of substrate (Landres et al., 1999; Henry and Roberts, 2007; Bourque and Demopoulos, 2018), water-mass characteristics (Hátún, et al., 2009; Puerta et al., 2020), and food supply (Klitgaard and Tendal, 2004; Kazanidis and Witte, 2016)] in shaping ecosystem structure and functioning. Indeed, ecosystem variability has been identified as one of the most common critical issues complicating the implementation of policy frameworks (Alexander et al., 2015). For example, in the North Atlantic pronounced changes in the fauna across trophic levels over nearly a century have been attributed to changes in the strength and extent of the subpolar gyre (Hátún et al., 2009), which complicates the establishment of threshold values.

The identification of pristine areas free from anthropogenic pressures, e.g. deep-sea Marine Protected Areas (MPAs) or Special Areas of Conservation (SACs) were also suggested as a possible pathway for the setup of baselines. In the northeast Atlantic a number of deep-sea MPAs/SACs, have been established (e.g. the Sedlo seamount MPA, the Faroe-Shetland Channel MPA, the Rosemary Bank seamount MPA, the East Mingulay and Darwin Mounds SACs, Natura 2000 areas in Bay of Biscay, west coast of Ireland and northern Spain - <http://natura2000.eea.europa.eu/>). Comparisons between areas inside and outside the Faroe-Shetland Channel MPA have shown that deep-sea sponge aggregations inside the MPA had higher sponge morphotype diversity/richness/density and higher number of body-size cohorts than areas outside the MPA; the main parameter driving these differences was the lower bottom fishing pressure inside than outside the MPA (Kazanidis et al., 2019). Furthermore, monitoring of cold-water corals in the Darwin Mounds revealed no coral recolonisation and very little regrowth eight years after the closure to bottom contact fisheries (Huvenne et al., 2016). It is, however, unknown the extent that deep-sea MPAs could be used as a basis to set-up baselines as differences in the structure and functioning of deep-sea ecosystems can arise not only due to human activities but also due to environmental natural variability [e.g. habitat type (Henry and Roberts, 2007; Bourque and Demopoulos, 2018), water-mass characteristics (Hátún, et al., 2009; Puerta et al., 2020), and food supply (Klitgaard and Tendal, 2004; Kazanidis and Witte, 2016)].

4.3. Potential most suitable indicators for the assessment of deep-sea environmental status

The widespread use of the indicator “Areal extent of human affected area” indicates the relatively high data availability regarding deep-sea areas affected by demersal fisheries. This suggests the high potential of this indicator to be used for future assessments of deep-sea environmental status, specifically addressing the GES Decision (European Commission, 2017) D6.2 Criterion “Spatial extent and distribution of

physical disturbance pressures on the seabed”. Knowledge on the spatial extent of human-affected areas in the deep sea already exists for some areas (e.g. Hatton and Rockall Bank, Benn et al., 2010; Norwegian reefs: Buhl-Mortensen and Buhl-Mortensen, 2017; Porcupine Seabight: Vieira et al., 2019, 2020; Gulf of Cádiz: Díaz-del-Río et al., 2014), and it is fundamental to assess the deep-sea status due to the high sensitivity of deep-sea species to physical damage and sedimentation following seabed disturbance (Roberts et al., 2000; Puig et al., 2012; Pusceddu et al., 2014; Huvenne et al., 2016). The usefulness of this indicator is enhanced when data on “Areal extent of biogenic/vulnerable habitats” are also available as this allows to overlay pressure and status indicators. In this assessment data for these two indicators were available for the LoVe Ocean Observatory and Bay of Biscay; the data quality, however, for “Areal extent of biogenic/vulnerable habitats” was mainly considered “poor”. This highlights the urgent need to improve the quantity and quality of data on the spatial distribution of biogenic/vulnerable habitats (Section 4.5). In previous assessments the indicators “Physical Damage” and “Cumulative impacts on seabed habitats” were used in OSPAR (2017) and Korpinen et al. (2013) to assess the impact of anthropogenic activities in northeast Atlantic and Baltic Sea deep-sea habitats, respectively. In principle, these indicators used habitat maps, sensitivity/resilience to disturbance and distribution/intensity of human activities highlighting the urgent need to advance our understanding about the distribution of habitats, and especially those that are particularly vulnerable to human pressures, in the deep sea.

Case-study leaders have identified some new indicators (i.e. other than those already existing in NEAT database; highlighted in grey in Table 3) that could contribute in the assessment of the deep-sea environmental status. Three of these indicators are related to non-commercial fish (i.e. “Abundance of non-commercial demersal fish and cephalopods”, “Species richness of non-commercial fish” and “Species diversity (Shannon index) of non-commercial fish”). Several of these non-commercial species play an important role in ecosystem functioning and/or are included in endangered species list and thus their assessment is important. For example, 1) several fish species feed on *Trisopterus minutus* (Magnussen and Magnussen, 2009), 2) *Capros aper* has a pivotal position on marine food webs grazing on zooplankton and being also an important prey for commercial species (Lopes et al., 2006) and 3) black-legged kittiwake seabirds rely on the sand eel *Ammodytes marinus* (Arnott and Ruxton, 2002). Furthermore, *Eutrigla gurnardus* is a new potential commercial species and ICES has recommended that landings and discards are monitored (McCarthy et al., 2018). Finally, skates in the genus *Dipturus* are critically endangered according to the IUCN Red List of Threatened Species (Dulvy et al., 2006). On top of the indicators related to non-commercial fish, there was also a new indicator suggested related to commercial fish i.e. “Abundance of commercial fish”. The abundance of *Micromesistius poutassou* showed striking shifts since late 1990’s with the mechanisms driving these changes remaining unknown (Payne et al., 2012) while the distribution of *Helicolenus dactylopterus* in the North Atlantic is expected to continue to shift northwards by 2100, following changes in water-mass characteristics (Morato et al., 2020). The indicator “Abundance of commercial fish” mentioned here can support in the future the assessments of fish stocks done using indicators like “Proportion of large fish” and “Change in average trophic level of marine predators” (OSPAR, 2017). The indicator “Ratio of live versus dead/overgrown coral cover” can be useful in the assessment of environmental status of coral reefs and gardens. Corals are exposed to multiple pressures (e.g. ocean warming, acidification, deoxygenation) which can cause a decline in their health (Hennige et al., 2015; Büscher et al., 2017). Visual surveys accompanied by machine learning are expected to contribute efficiently in the assessment of status of coral habitats in the coming years (Vad et al., 2017; Piechaud et al., 2019; see also in Section 4.5). The indicator “Areal extent of sedimentary seafloor” can contribute to the assessment of deep-sea sedimentary habitats. This is particularly relevant as some of studies have shown that bottom trawling can have large-scale

detrimental impacts on sediments reducing their structural complexity, carbon content, carbon turnover and meiofauna biodiversity (Puig et al., 2012; Pusceddu et al., 2014). Finally, two indicators related to marine litter have been suggested which also can facilitate the assessment of deep-sea environmental status. Indeed, experimental work has shown that both macro- and microplastics significantly reduced skeletal growth rates in the reef-forming cold-water coral *Lophelia pertusa* (Chapron et al., 2018) while abandoned fishing gear can be harmful for deep-sea fauna (e.g. ghost fishing – Tubau et al., 2015).

4.4. Evaluating the performance of the NEAT software – references to other approaches previously used to assess deep-sea environmental status

Considering a) the results of the NEAT analyses, b) the level of agreement between these results and expert judgement and c) the available information in scientific literature, it can be concluded that overall NEAT had a meaningful performance in the assessment of the environmental status in the nine deep-sea areas studied here. This is especially supported by the good match between the gradient of human pressures and resulting environmental status e.g. NEAT managed to show that SAUs under long-standing human pressures were in lower environmental status than other SAUs where human pressures were less (see below). In addition, NEAT managed to capture the response of ecosystem components to management measures showing an improvement in the status of commercially important fish following fisheries closure, as in the Condor seamount (Azores).

The level of agreement between the outcome of NEAT analysis and ATLAS expert judgement ranged from moderate to excellent (Table 4). The deeper areas of the Porcupine Seabight were in good status (Tables 4-5; see also Figs. 1-2 in Supplementary File) mainly due to low swept area ratio values; expert judgement was in agreement with NEAT results. After a long period of exhaustive exploitation until the early 2000s (Vieira et al., 2019), the implementation of restrictive measures by EC in 2002 reduced the fishing pressure on deep-water fishes and the overall biomass of commercial stocks increased (ICES, 2016b). This improvement of the stock situations was also described in OSPAR (2017). The Deep-Sea regulation (European Union, 2016) limited the use of specific fishing gears below 800 m water depth including the prohibition of bottom fisheries in areas hosting VMEs, such as the Porcupine Seabight. NEAT outcome for the LoVe Ocean Observatory showed that the area was also in good status (Tables 4-5; see also Figs. 1-2 in Supplementary File) which was in agreement with expert judgement. This outcome was supported from the relatively high areal extent and density of biogenic/vulnerable habitats as well as from the small (below < 5%) extent of areas affected by bottom-contact fisheries. Faroe-Shetland Channel and the Reykjanes Ridge showed good agreement between NEAT results and expert judgement (Tables 4-5; see also Figs. 1-2 in Supplementary File). Recent findings showed that sponge aggregations inside the Faroe-Shetland Channel Marine Protected Area (MPA) were in better status than those outside (Kazanidis et al., 2019); very little marine litter was also observed (Pham et al., 2014) and demersal landings/ICES rectangle were much lower inside than outside the MPA. The NEAT analysis suggested a moderate environmental status for the Reykjanes Ridge. This outcome was supported by the fact that some of the examined areas were under strong fishing pressure (Ragnarsson and Steingrímsson, 2003).

In four study areas there was a moderate agreement between NEAT results and expert judgement. NEAT showed an overall poor environmental status for Mingulay Reef Complex (Tables 4-5; see also Figs. 1-2 in Supplementary File). This outcome was in contradiction with expert's judgement who mentioned that good status should be expected for this CWC reef. This discrepancy was an outcome of the very low values -due to methodology used- measured for "Species richness of non-commercial fish" and "Abundance of commercial fish" indicators (Table 1 in Supplementary File) which were linked to SAU-1. The combination of very low measured values for indicators in a large SAU had a major

impact in the overall result of the assessment. The result of the assessment for the ecosystem components "benthic invertebrates" and "benthos" -for which data quality was good- was that both components were in good status, which was in complete agreement with expert judgement and the information from the area in the public domain (Roberts et al., 2005; Henry et al., 2013; Kazanidis et al., 2016; De Clippele et al., 2017). The results for the Mingulay Reef Complex highlight that low-quality data should be treated with much caution (Uusitalo et al., 2016). The Rockall Bank assessment also revealed a moderate agreement between NEAT and expert judgement. Specifically, the NEAT results showed a poor environmental status (Tables 4-5; see also Figs. 1-2 in Supplementary File). This outcome agrees with previous results that highlighted the unfavorable condition of habitats (e.g. stony, bedrock and biogenic reefs) and ecosystem components in Rockall Bank's Special Areas of Conservation due to continued mobile and static demersal fishing (JNCC 2018a, b). The Rockall Bank has supported fisheries for > 200 years (Newton et al., 2008). The reason for the moderate agreement between NEAT and expert judgement is the high natural variability of oceanographic conditions across time and the effect on the fish community (OSPAR, 2017 and Section 4.2). For the Condor seamount (Azores), NEAT showed an increase from moderate (Tables 4-5; see also Figs. 1-2 in Supplementary File) to good status (Tables 4-5; see also Figs. 1-2 in Supplementary File) for body length and biomass of two commercially-important fishes, after the bottom longline and handline fisheries closures. This outcome agrees with the signs of recovery for the commercially most important species here (Eva Giacomello pers. comm.). ATLAS experts highlighted that although NEAT results reflect the current situation for the two fishes, they do not reflect the status of the whole Condor seamount ecosystem as the overall condition is perceived to be good. No bottom trawling has ever occurred, coral gardens are still abundant and fish stocks have not dramatically collapsed (Menezes et al., 2013; Gomes-Pereira et al., 2017; Parra et al., 2017). In the Gulf of Cádiz there was also moderate agreement between NEAT and expert judgement. SAU-2 had a lower environmental status than SAU-1 due to the higher trawling activity in SAU-2 and the much lower values for the density of biogenic reef-forming species, mainly sea pens in this case. The lack of historical data and the limited knowledge on the natural variability of this area with complex oceanography and seafloor morphology (Díaz-del-Río et al., 2014) hampered the establishment of boundary values, which in turn led to a moderate agreement between NEAT results and expert judgement. Finally, for the Bay of Biscay there was no judgement expressed regarding the outcome of the NEAT assessment, due to the limited knowledge about the distribution of ecosystems components, low quality of data collected, limited understanding of the role of environmental natural variability in shaping ecosystem structure and functioning and a lack of historical data. It should be mentioned that analysis of long-time series in the Bay of Biscay showed an increase in the "Typical Length" of demersal fishes, no significant changes over time for the pelagic fish communities and a widespread presence of marine litter, especially plastics, on seabed (OSPAR, 2017).

Considering the results of the present study the reasons that lead to a less-than-good level of agreement can be grouped in two broad categories: 1) issues intrinsic to NEAT and 2) issues related to the quantity/quality of data supplied. As regards the first category, one of the main issues is the limited transparency in the algorithms used by NEAT for the assessment of environmental status. Addressing this issue in the future would increase confidence to the results produced by this software. Furthermore, NEAT does not currently account for the amount of data available per SAU or for data of low quality. Development of the relevant weighting schemes in the future would also increase confidence to NEAT outcomes. Finally, in a number of cases the standard error is set to zero, which artificially inflates the confidence level. We suggest that this is an important aspect that needs to be addressed (Chen et al., 2014 and references there in; Lavallé and Beaumont, 2015). It is also important to note that expert judgement by its very

nature will be biased by the viewpoints of the experts concerned. This issue was beyond the scope of the present study. Based on the replies we received it seems that the characteristics of the data used by case study leaders (i.e. amount, type, quality, time frame covered, spatial extension across the study area), the methods used/sampling design followed in data collection, environmental natural variability as well as knowledge based on scientific literature and previous surveys in the study areas, played a role in shaping expert judgement.

In the second category of drivers leading to moderate agreement between NEAT and expert judgement explanations included scarce data on the structure and functioning of deep-sea ecosystems, limited understanding of the role of environmental natural variability across/within study areas and a lack of historical data which hindered the setup of baselines. These issues are among the greatest challenges to be addressed by experts and the tools they use for assessing the environmental status of the deep sea. The limited availability of information does not hinder solely the current assessment using NEAT. Indeed, these challenges are intrinsic to all the efforts aiming to the assessment of deep-sea environmental status irrespectively of the approach that will be used (expert judgement/assessment tools/ecological models; e.g. Borja et al., 2011; Piroddi et al., 2015; Elliott et al., 2018). The shortcomings mentioned above about data availability are analogous to those reported in a previous assessment of disturbance in OSPAR Threatened and/or Declining Habitats in northeast Atlantic using the “Physical Damage” indicator. Limited data availability on habitat distribution and species’ sensitivity to physical damage led to a partial assessment and classification of carbonate mounds, deep-sea sponge aggregations and *Lophelia* reefs across the nine categories of disturbance shown in OSPAR (2017). Furthermore, it should be mentioned that the role of natural variability and difficulties in the setup of baselines are a challenge also for assessments in shallow-water areas (Korpinen et al., 2013; Myrberg et al., 2019), where traditionally there is much higher availability of data than in the deep sea. Improvements in these fields will enhance the robustness of the analysis and the level of confidence in the produced outcomes (Section 4.5; see also González-Irusta et al., 2018; ICES, 2019).

4.5. Next steps in the assessment of deep-sea environmental status

The results of the current and previous efforts to assess the environmental status in deep-sea areas highlight the big challenge that scientists, policy makers, industry and the public will face in the coming years (Orejas et al., in press). Here, we summarize how the amount and quality of deep-sea data could be improved. This will also facilitate the setup of boundary/threshold values and improve the confidence in the assessment of deep-sea environmental status.

Information on human pressures remains scarce and therefore an easier access to Vessel Monitoring System data is imperative in order to improve understanding about the spatial distribution of bottom trawling, which is currently the main human activity resulting in physical damage in the deep sea over large spatial scales (Benn et al., 2010; Amoroso et al., 2018). Intersectoral collaborations (e.g. industry-academia; in present study data from the LoVe Ocean Observatory were supplied by Equinor, an energy company) and (meta)data archiving in online repositories (e.g. ICES VME data base, EMODnet, PANGAEA) will improve knowledge about the impacts of human activities and ecosystem functioning, in general (Stratmann et al., 2019; Vad et al., 2020). The assessment of the distribution of marine litter on the seafloor will be facilitated through the data acquisition taking advantage of the already existing regular scientific trawling surveys and development of specific common protocols (see OSPAR, 2017; Baudrier et al., 2018).

Advances in recording the spatial and long-term distribution of ecosystem components are also fundamental to improve the accuracy of the deep-sea environmental status assessments. The use of updated technological equipment (e.g. towed cameras, autonomous underwater

vehicles (AUVs), ROVs, benthic landers; McIntyre et al., 2013; Lavaleye et al., 2017; Levin et al., 2019; Van Engeland et al., 2019) contribute to the collection of large volumes of imagery and environmental data facilitating an improved understanding of the ecosystems’ natural variability across space and time. This understanding will be accelerated through machine learning enabling the automatic extraction of features (e.g. benthic ecosystem components) (Osterloff et al., 2016; Piechoud et al., 2019). This will contribute to a better understanding of habitat and species distribution when it is incorporated into ensemble mapping techniques (Araujo and New, 2007; Robert et al., 2016; OSPAR, 2017; Kenchington et al., 2019a; Ramiro-Sánchez et al., 2019).

Research efforts need to address key points like the response of habitat-forming species to multiple stressors (Lunden et al., 2014; Hennige et al., 2015; Büscher et al., 2017) and the behavior of deep-sea species’ larvae (Larsson et al., 2014; Strömberg and Larsson, 2017). The latter is especially important in order to improve our understanding about connectivity among cold-water ecosystems and source-sink dynamics (Fox et al., 2016; Kenchington et al., 2019b) which can help to set up priorities for environmental status assessments and conservation strategies. The quality of data collection will benefit from the standardization of methodologies used e.g. through the establishment of standardized reference image databases (Howell et al., 2019) and protocols on data collection and reporting [e.g. marine litter as number of items/km²- European Commission (2017)].

5. Conclusions

Based on the findings of the present study, we conclude that the indicators “Areal extent of human affected area”, “Areal extent of biogenic/vulnerable habitats” and “Density of biogenic reef forming species” should be considered in future regional assessments of deep-sea environmental status as these would be more inclusive of deep-sea environments including those that form VMEs. As it was shown here, the NEAT software produced meaningful results which were in good/moderate agreement with expert judgement. There are, however, a number of issues that should prevent its use without advice from experts in the field of deep-sea ecology. We think that it would be wise to use NEAT in the assessment of environmental status of areas under clear gradients of human pressures. The software could also be used to assess the status of areas/habitats/ecosystem components before and after the implementation of management measures (e.g. in the monitoring of habitats/ecosystem components over time within MPAs). Furthermore, considering a) the data-limited situation in the deep sea, b) the need to nest data from studies conducted at different spatial/temporal scales and the challenges related to deep-sea monitoring, we suggest that the assessment of deep-sea environmental status should take place, at habitat and ecosystem level (rather than at species level), in comparison to shallow-water areas (Borja et al., 2014). It would also be prudent to set scientific, technical and financial criteria to prioritize the assessment of environmental status in areas of special importance such as areas acting as critical larval sources for overall network connectivity and/or refugia from climate change (Fox et al., 2016; Johnson et al., 2018; Johnson and Kenchington, 2019).

CRedit authorship contribution statement

Georgios Kazanidis: Conceptualization, Methodology, Resources, Software, Formal analysis, Writing - original draft, Writing - review & editing. **Covadonga Orejas:** Conceptualization, Methodology, Resources, Writing - original draft, Writing - review & editing. **Angel Borja:** Methodology, Software, Writing - review & editing. **Ellen Kenchington:** Conceptualization, Writing - original draft, Writing - review & editing. **Lea-Anne Henry:** Conceptualization, Resources, Writing - review & editing. **Oisín Callery:** Resources, Writing - review & editing. **Marina Carreiro-Silva:** Resources, Writing - review & editing. **Hronn Egilsdottir:** Resources, Writing - review & editing. **Eva Giacomello:** Resources, Writing - review & editing. **Anthony Grehan:**

Methodology, Resources, Writing - review & editing. **Lénaïck Menot:** Resources, Writing - review & editing. **Telmo Morato:** Resources, Writing - review & editing. **Stefan Aki Ragnarsson:** Resources, Writing - review & editing. **José Luis Rueda:** Resources, Writing - review & editing. **David Stirling:** Resources, Writing - review & editing. **Tanja Stratmann:** Resources, Writing - review & editing. **Dick van Oevelen:** Resources, Writing - review & editing. **Andreas Palialexis:** Conceptualization, Writing - review & editing. **David Johnson:** Resources, Writing - review & editing. **J Murray Roberts:** Conceptualization, Resources, Writing - review & editing.

Declaration of Competing Interest

The authors declare that they have no known competing financial interests or personal relationships that could have appeared to influence the work reported in this paper.

Acknowledgments

We would like to thank Nikolai Roterman, Steve Ross, Pablo Duran, Marina Gallardo-Núñez, Ana García-Alegre, Francis Neat, Mar Sacau, Gerald Taranto and Javier Urrea for their support in supplying data to perform the selection of indicators as well as data to perform the NEAT analyses. We would like to thank Maria Uyarra - FP7 Devotes (GA 308392) who provided an initial training workshop on NEAT and the H2020 Columbus project (GA 652690) for providing her with travel support. We would also like to thank the crew and officers of the vessels used in data collection. We would like also to thank Joana Gafeira (BGS) for her help in the creation of the maps. JLR would like to acknowledge the projects ISUNEP-CA, LIFE + INDEMARES and LIFE IP PAF INTEMARES which provided data for carrying out the NEAT analyses for the Gulf of Cádiz.

Funding

This study was funded by the European Union's Horizon 2020 research and innovation programme under grant agreement no. 678760 (ATLAS) to JMR. This output reflects only the authors' view and the European Union cannot be held responsible for any use that may be made of the information contained therein. TS was partly funded by the Dutch Research Council (NWO) within the research programme Rubicon with project number 019.182EN.012. Funding for EK contributions was through Fisheries and Oceans Canada, International Governance Strategy Science Program. HE was funded by the Icelandic Research Fund, RANNÍS, under grant agreement no. 174552. TM received additional support from the Program Investigador FCT (IF/01194/2013), IFCT Exploratory Project (IF/01194/2013/CP1199/CT0002) from the Fundação para a Ciência e Tecnologia (POPH and QREN), and from the PO2020 Azores MapGES project (Acores-01-0145-FEDER-000056). EG was supported by DEMERSAIS and CONDOR project (funded by the Azores Regional Government).

Appendix A. Supplementary data

Supplementary data to this article can be found online at <https://doi.org/10.1016/j.ecolind.2020.106624>.

References

Alexander, K.A., Kershaw, P., Cooper, P., Gilbert, A.J., Hall-Spencer, J.M., Heymans, J.J., Kannen, A., Los, H.J., O'Higgins, T., O'Mahony, C., Tett, P., Troost, T.A., van Beusekom, J., 2015. Challenges of achieving Good Environmental Status in the Northeast Atlantic. *Ecol. Soc.* 20, 49. <https://doi.org/10.5751/ES-07394-200149>.

Amoroso, R.O., Pitcher, C.R., Rijnsdorp, A.D., McConnaughey, R.A., Parma, A.M., Suuronen, P., Eigaard, O.R., Bastardie, F., Hintzen, N.T., Althaus, F., Baird, S.J., Black, J., Buhl-Mortensen, L., Campbell, A.B., Catarino, R., Collie, J., Cowan Jr., J.H., Durholtz, D., Engstrom, N., Fairweather, T.P., Fock, H.O., Ford, R., Gálvez, P.A.,

Gerritsen, H., Góngora, M.E., González, J.A., Hiddink, J.G., Hughes, K.M., Intelmann, S.S., Jenkins, C., Jonsson, P., Kainge, P., Kangas, M., Kathena, J.N., Kavadas, S., Leslie, R.W., Lewis, S.G., Lundy, M., Makin, D., Martin, J., Mazor, T., Gonzalez-Mirelis, G., Newman, S.J., Papadopolou, N., Posen, P.E., Rochester, W., Russo, T., Sala, A., Semmens, J.M., Silva, C., Tsolos, A., Vanelandier, B., Wakefield, C.B., Wood, B.A., Hilbom, R., Kaiser, M.J., Jennings, S., 2018. Bottom trawl fishing footprint's on the world's continental shelves. *Proc Natl Acad Sci U.S.A.* 115, E10275–E10282. <https://doi.org/10.1073/pnas.1802379115>.

Andaloro, F., Ferraro, M., Mostarda, E., Romeo, T., Consoli, P., 2013. Assessing the suitability of a ROV to study the fish community associated with offshore gas platforms in the Ionian Sea: a comparative analysis with underwater visual censuses (UVCs). *Helgol. Mar. Res.* 67, 241. <https://doi.org/10.1007/s10152-012-0319-y>.

Araujo, M.B., New, M., 2007. Ensemble forecasting of species distributions. *Trends Ecol. Evol.* 22, 42–47. <https://doi.org/10.1016/j.tree.2006.09.010>.

Armstrong, C.W., Vondolia, G.K., Foley, N.S., Henry, L.-A., Needham, K., Ressurreição, A., 2019. Expert assessment of risks posed by climate change and anthropogenic activities to ecosystem services in the deep North Atlantic. *Front. Mar. Sci.* 6, 158. <https://doi.org/10.3389/fmars.2019.00158>.

Arnott, S.A., Ruxton, G.D., 2002. Sandeel recruitment in the North Sea: demographic, climatic and trophic effects. *Mar. Ecol. Prog. Ser.* 238, 199–210.

Baudrier, J., Lefebvre, A., Galgani, F., Sarau, C., Doray, M., 2018. Optimising French fisheries surveys for marine strategy framework directive integrated ecosystem monitoring. *Mar. Pol.* 94, 10–19. <https://doi.org/10.1016/j.marpol.2018.04.024>.

Benn, A., Weaver, P.P., Billett, D.S.M., van den Hove, S., Murdock, A.P., Doneghan, G.B., Le Bas, T., 2010. Human activities on the deep seafloor in the North East Atlantic: an assessment of spatial extent. *PLoS ONE* 5, e12730. <https://doi.org/10.1371/journal.pone.0012730>.

Berg, T., Murray, C., Carstensen, J., Andersen, J.H., 2016. NEAT-Nested Environmental Assessment Tool. Manual-Version 1.3.

Bett, B.J., 2001. UK Atlantic Margin Environmental Survey: Introduction and overview of bathyal benthic ecology. *Cont. Shelf Res.* 21, 917–956. [https://doi.org/10.1016/S0278-4343\(00\)00119-9](https://doi.org/10.1016/S0278-4343(00)00119-9).

Bett, B.J., 2012. Seafloor biotope analysis of the deep waters of the SEA4 region of Scotland's seas. *JNCC Report No 472*.

Borja, A., Barbone, E., Basset, A., Borgersen, G., Brkljacic, M., Elliott, M., Garmendia, J.M., Marques, J.C., Mazik, K., Muxika, I., Neto, J.M., Norling, K., Rodríguez, J.G., Rosati, I., Rygg, B., Teixeira, H., Trayanova, A., 2011. Response of single benthic metrics and multi-metric methods to anthropogenic pressure gradients, in five distinct European coastal and transitional ecosystems. *Mar. Pollut. Bull.* 62, 499–513. <https://doi.org/10.1016/j.marpolbul.2010.12.009>.

Borja, A., Dauer, D.M., Grémare, A., 2012. The importance of setting targets and reference conditions in assessing marine ecosystem quality. *Ecol. Indic.* 12, 1–7. <https://doi.org/10.1016/j.ecolind.2011.06.018>.

Borja, A., Prins, T., Simboura, N., Andersen, J.H., Berg, T., Marques, J.C., Neto, J.M., Papadopoulou, N., Reker, J., Teixeira, H., Uusitalo, L., 2014. Tales from a thousand and one ways to integrate marine ecosystem components when assessing the environmental status. *Front. Mar. Sci.* 1, 72. <https://doi.org/10.3389/fmars.2014.00072>.

Borja, A., Elliott, M., Andersen, J.H., Berg, T., Carstensen, J., Halpern, B.S., Heiskanen, A.S., S. Korpinen, S., Lowndes, J.S.S., Martin, G., Rodriguez-Ezpeleta, N., 2016. Overview of integrative assessment of marine systems: the ecosystem approach in practice. *Front. Mar. Sci.* 3, 20. <https://doi.org/10.3389/fmars.2016.00020>.

Borja, A., Garmendia, J.M., Menchaca, I., Uriarte, A., Sagarmínaga, Y., 2019. Yes, We Can! Large-Scale Integrative Assessment of European Regional Seas, Using Open Access Databases. *Front. Mar. Sci.* 6, 19. <https://doi.org/10.3389/fmars.2019.00019>.

Braga-Henriques, A., 2014. Cold-water coral communities in the Azores: diversity, habitat and conservation. Ph.D. Thesis. University of the Azores, Portugal. <http://hdl.handle.net/10400.3/3615>.

Bourque, J.R., Demopoulos, A.W.J., 2018. The influence of different deep-sea coral habitats on sediment macrofaunal community structure and function. *PeerJ*. <https://doi.org/10.7717/peerj.5276>.

Braga-Henriques, A., Porteiro, F.M., Ribeiro, P.A., de Matos, V., Sampaio, I., Ocaña, O., Santos, R.S., 2013. Diversity, distribution and spatial structure of the cold-water coral fauna of the Azores (NE Atlantic). *Biogeosciences* 10, 529–590. <https://doi.org/10.5194/bg-10-4009-2013>.

Buhl-Mortensen, L., Buhl-Mortensen, P., 2017. Marine litter in the Nordic Seas: distribution composition and abundance. *Mar. Pollut. Bull.* 125, 260–270. <https://doi.org/10.1016/j.marpolbul.2017.08.048>.

Buhl-Mortensen, L., Vanreusel, A., Gooday, A.J., Levin, L.A., Priede, I.G., Buhl-Mortensen, P., Gheerardyn, H., King, N.J., Raes, M., 2010. Biological structures as a source of habitat heterogeneity and biodiversity on the deep ocean margins. *Mar. Ecol.* 31, 21–50. <https://doi.org/10.1111/j.1439-0485.2010.00359.x>.

Buhl-Mortensen, L., Olafsdottir, S.H., Buhl-Mortensen, P., Burgos, J.M., Ragnarsson, S.A., 2015. Distribution of nine cold-water coral species (Scleractinia and Gorgonacea) in the cold temperate North Atlantic: effects of bathymetry and hydrography. *Hydrobiol.* 759, 39–61. <https://doi.org/10.1007/s10750-014-2116-x>.

Bullough, L.W., Turrell, W.R., Buchan, P., Priede, I.G., 1998. Commercial deep water trawling at sub-zero temperatures - observations from the Faroe-Shetland channel. *Fisheries Res.* 39, 33–41. [https://doi.org/10.1016/S0165-7836\(98\)00170-2](https://doi.org/10.1016/S0165-7836(98)00170-2).

Büscher, J.V., Form, A.U., Riebesell, U., 2017. Interactive effects of ocean acidification and warming on growth, fitness and survival of the cold-water coral *Lophelia pertusa* under different food availabilities. *Front. Mar. Sci.* 4, 101. <https://doi.org/10.3389/fmars.2017.00101>.

Chapron, L., Peru, E., Engler, A., Ghiglione, J.F., Meistertzheim, A.L., Pruski, A.M., Purser, A., Vétion, G., Galand, P.E., Lartaud, F., 2018. Macro- and microplastics affect cold-water corals growth, feeding and behaviour. *Sci. Rep.* 8 15299. <https://doi.org/10.1038/s41598-018-28218-1>.

- 1038/s41598-018-33683-6.
- Chen, H., Hailey, D., Wang, N., Yu, P., 2014. A review of data quality assessment methods for public health information systems. *Int. J. Environ. Res. Public Health* 11, 5170–5207. <https://doi.org/10.3390/ijerph11050517>.
- Clark, M.R., Althaus, F., Schlacher, T.A., Williams, A., Bowden, D.A., Rowden, A.A., 2016. The impacts of deep-sea fisheries on benthic communities: a review. *ICES J. Mar. Sci.* 73 (1), i51–i69. <https://doi.org/10.1093/icesjms/fsv123>.
- Clark, M.R., Bowden, D.A., Rowden, A.A., Stewart, R., 2019. Little evidence of benthic community resilience to bottom trawling on seamounts after 15 years. *Front. Mar. Sci.* 6, 63. <https://doi.org/10.3389/fmars.2019.00063>.
- Copley, J.T., Tyler, P.A., Shearer, M., Murtun, B.J., German, C.R., 1996. Megafauna from sublittoral to abyssal depths along the Mid-Atlantic Ridge south of Iceland. *Oceanologica Acta* 1, 549–559.
- Cordes, E.E., Jones, D.O.B., Schlacher, T.A., Amon, D.J., Bernardino, A.F., Brooke, S., Carney, R., DeLeo, D.M., Dunlop, K.M., Escobar-Briones, E.G., Gates, A.R., Génio, L., Gobin, J., Henry, L.-A., Herrera, S., Hoyt, S., Joye, M., Kark, S., Mestre, N.C., Metaxas, A., Pfeifer, S., Sink, K., Sweetman, A.K., Witte, U., 2016. Environmental impacts of the deep-water oil and gas industry: a review to guide management strategies. *Front. Environ. Sci.* 4, 58. <https://doi.org/10.3389/fenvs.2016.00058>.
- Costello, M.J., Chaudhary, C., 2017. Marine biodiversity, biogeography, deep-sea gradients, and conservation. *Curr. Biol.* 27, R511–R527. <https://doi.org/10.1016/j.cub.2017.04.060>.
- Dailianis, T., Smith, C.J., Papadopoulou, N., Gerovasileiou, V., Sevastou, K., Bekkby, T., Bilan, M., Billett, D., Boström, C., Carreiro-Silva, M., Danovaro, R., Frascchetti, S., Gagnon, K., Gambi, C., Grehan, A., Kipson, S., Kotta, J., McOwen, C.J., Morato, T., Ojaveer, H., Pham, C.K., Scrimgeour, R., 2018. Human activities and resultant pressures on key European marine habitats: An analysis of mapped resources. *Mar. Pol.* 98, 1–10. <https://doi.org/10.1016/j.marpol.2018.08.038>.
- Danovaro, R., Fanelli, E., Canals, M., Ciuffardi, T., Fabri, M.-C., Taviani, M., Argyrou, M., Azzurro, E., Bianchelli, S., Cantafaro, A., Carugati, L., Corinaldesi, C., de Haan, W.P., Dell'Anno, A., Evans, J., Fogliini, F., Galil, B., Gianni, M., Goren, M., Greco, S., Grimalt, J., Güell-Bujons, Q., Jadaud, A., Knittweis, L., Lopez, J.L., Sanchez-Vidal, A., Schembri, P.J., Snelgrove, P., Vaz, S., IDEM Consortium, 2020. Towards a marine strategy for the deep Mediterranean Sea: analysis of current ecological status. *Mar. Pol.* 112: 103781. <https://doi.org/10.1016/j.marpol.2019.103781>.
- De Clippele, L.H., Gafeira, J., Robert, K., Hennige, S., Lavaley, M.S., Duineveld, G.C.A., Huvenne, V.A.I., Roberts, J.M., 2017. Using novel acoustic and visual mapping tools to predict the small-scale spatial distribution of live biogenic reef framework in cold-water coral habitats. *Coral Reefs* 36, 255–268. <https://doi.org/10.1007/s00338-016-1519-8>.
- Dulvy, N.K., Notarbartolo di Sciarra, G., Serena, F., Tinti, F., Ungaro, N., Mancusi, C., Ellis, J., 2006. *Dipturus batis*. The IUCN Red List of Threatened Species 2006: e. T39397A10198950. <http://dx.doi.org/10.2305/IUCN.UK.2006.RLTS.T39397A10198950.en>.
- Durán-Muñoz, P., Sayago-Gil, M., Patrocínio, T., González-Porto, M., Murillo, F.J., Sacau, M., González, E., Fernández, G., Gago, A., 2012. Distribution patterns of deep-sea fish and benthic invertebrates from trawlable grounds of the Hatton Bank, north-east Atlantic: effects of deep-sea bottom trawling. *J. Mar. Biol. Assoc. UK* 92, 1509–1524. <https://doi.org/10.1017/S002531541200015X>.
- Elliott, M., Boyes, S.J., Barnard, S., Borja, A., 2018. Using best expert judgement to harmonise marine environmental status assessment and maritime spatial planning. *Mar. Pollut. Bull.* 133, 367–377. <https://doi.org/10.1016/j.marpolbul.2018.05.029>.
- European Commission., 2008. Directive 2008/56/EC of the European Parliament and the Council establishing a framework for community action in the field of marine environmental policy (Marine Strategy Framework Directive). *Off. J. Eur. Union L* 164/19–40.
- European Commission., 2017. Commission Decision (EU) 2017/848 of 17 May 2017 laying down criteria and methodological standards on good environmental status of marine waters and specifications and standardized methods for monitoring and assessment, and repealing Decision 2010/477/EU. *Off. J. Eur. Union L* 125/43.
- European Union, 1992. Council Directive 92/43/EEC of 21 May 1992 on the conservation of natural habitats and of wild fauna and flora. L 206/7.
- European Union., 2016. Regulation (EU) 2016/2336 of the European Parliament and of the Council of 14 December 2016 establishing specific conditions for fishing for deep-sea stocks in the north-east Atlantic and provisions for fishing in international waters of the north-east Atlantic and repealing Council Regulation (EC) No 2347/2002. *Off. J. Eur. Union L* 354/1.
- Fabri, M.-C., Vinha, B., Allais, A.-G., Bouhier, M.-E., Dugornay, O., Gaillot, A., Arnaubec, A., 2019. Evaluating the ecological status of cold-water coral habitats using non-invasive methods: An example from Cassidaigne canyon, northwestern Mediterranean Sea. *Prog. Oceanogr.* 178, 102172. <https://doi.org/10.1016/j.pocean.2019.102172>.
- FAO., 2009. The FAO international guidelines for the management of deep-sea fisheries in the High Seas. Rome. FAO Fisheries and Aquaculture Department.
- FAO., 2016. Vulnerable Marine Ecosystems: Processes and Practices in the High Seas, by Anthony Thompson, Jessica Sanders, Merete Tandstad, Fabio Carocci and Jessica Fuller, eds. FAO Fisheries and Aquaculture Technical Paper No. 595. Rome.
- Folkersen, M., Fleming, C., Hasan, S., 2018. The economic value of the deep sea: A systematic review and meta-analysis. *Mar. Pol.* 94, 71–80. <https://doi.org/10.1016/j.marpol.2018.05.003>.
- Fox, A.D., Henry, L.-A., Corne, D.W., Roberts, J.M., 2016. Sensitivity of marine protected area network connectivity to atmospheric variability. *R. Soc. Open Sci.* 3, 160494. <https://doi.org/10.1098/rsos.160494>.
- Georgian, S.E., Anderson, O.F., Rowden, A.A., 2019. Ensemble habitat suitability modeling of vulnerable marine ecosystem indicator taxa to inform deep-sea fisheries management in the South Pacific Ocean. *Fish. Res.* 211, 256–274. <https://doi.org/10.1016/j.fishres.2018.11.020>.
- Glover, A., Gooday, A.J., Bailey, D.M., Billett, D.S.M., Chevaldonné, P., Colaço, A., Copley, J., Cuvelier, D., Desbruyères, D., Kalogeropoulou, V., Klages, M., Lampadariou, N., Lejeune, C., Mestre, N.C., Paterson, G.L.J., Perez, T., Ruhl, H., Sarrazin, J., Soltwedel, T., Soto, E.H., Thatje, S., Tselepidis, A., Van Gaever, S., Vanreusel, A., 2010. Temporal change in deep-sea benthic ecosystems: a review of the evidence from recent time-series studies. *Adv. Mar. Biol.* 58, 1–95. <https://doi.org/10.1016/B978-0-12-381015-1.00001-0>.
- Godø, O.R., Johnsen, S., Torkelsen, T., 2014. The LoVe Ocean Observatory is in operation. *Mar. Technol. Soc. J.* 48, 24–30. <https://doi.org/10.4031/MTSJ.48.2.2>.
- Gollner, S., Kaiser, S., Menzel, L., Jones, D.O.B., Brown, A., Mestre, N.C., van Oevelen, D., Menot, L., Colaço, A., Canals, M., Cuvelier, D., Durden, J.M., Gebbruk, A., Egbo, G.A., Haeckel, M., Marcon, Y., Mevenkamp, L., Morato, T., Pham, C.K., Purser, A., Sanchez-Vidal, A., Vanreusel, A., Vink, A., Martinez, Arbizu P., 2017. Resilience of benthic deep-sea fauna to mining activities. *Mar. Env. Res.* 129, 76–101. <https://doi.org/10.1016/j.marenvres.2017.04.010>.
- Gomes-Pereira, J.N., Garmo, V., Catarino, D., Jakobsen, J., Alvarez, H., Aguilar, R., Hart, J., Giacomello, E., Menezes, G., Stefanni, S., Colaço, A., Morato, T., Santos, R.S., Tempera, F., Porteiro, F., 2017. Cold-water corals and large hydrozoans provide essential fish habitat for *Lappanella fasciata* and *Benthocometes robustus*. *Deep-Sea Res. II* 145, 33–48. <https://doi.org/10.1016/j.dsr2.2017.09.015>.
- González-García, M., Mateo-Ramírez, A., Urria, J., Fariás, C., Marina, P., Lozano, P., López-González, P.J., Megina, C., Enrique García Raso, J., Gofas, S., López, E., Moreira, J., López-González, N., Sánchez-Leal, R.F., Fernández-Salas, L.M., Rueda, J.L., 2020. Composition, structure and distribution of epibenthic communities within a mud volcano field of the northern Gulf of Cádiz in relation to environmental variables and trawling activity. *J. Sea Res.* 160–161, 101892. <https://doi.org/10.1016/j.seares.2020.101892>.
- González-Irusta, J.M., De la Torre, Ana, Punzón, A., Blanco, M., Serrano, A., 2018. Determining and mapping species sensitivity to trawling impacts: the Benthos Sensitivity Index to Trawling Operations (BESITO). *ICES J. Mar. Sci.* 75, 1710–1721. <https://doi.org/10.1093/icesjms/fsy030>.
- Halpern, B.S., Frazier, M., Afflerbach, J., Lowndes, J.S., Micheli, F., O'Hara, C., Scarborough, C., Selkoe, K.A., 2019. Recent pace of change in human impact on the world's ocean. *Sci. Rep.* 9, 11609. <https://doi.org/10.1038/s41598-019-47201-9>.
- Hartman, S.E., Lampitt, R.S., Larkin, K.E., Pagnani, M., Campbell, J., Gkritzalis, T., Jiang, Z.-P., Pebody, C.A., Ruhl, H.A., Gooday, A.J., Bett, B.J., Billett, D.S.M., Provost, P., McLachlan, R., Turton, J.D., Lankester, S., 2012. The Porcupine Abyssal Plain fixed-point sustained observatory (PAP-SO): variations and trends from the Northeast Atlantic fixed-point time-series. *ICES J. Mar. Sci.* 69, 776–783. <https://doi.org/10.1093/icesjms/fss077>.
- Hátún, H., Payne, M.R., Beaugrand, G., Reid, P.C., Sandø, A.B., Drange, H., Hansen, B., Jacobsen, J.A., Bloch, D., 2009. Large bio-geographical shifts in the north-eastern Atlantic Ocean: From the subpolar gyre, via plankton, to blue whiting and pilot whales. *Prog. Oceanogr.* 80, 149–162. <https://doi.org/10.1016/j.pocean.2009.03.001>.
- Hátún, H., Azetsu-Scott, K., Somavilla, R., Rey, F., Johnson, C., Mathis, M., Mikolajewicz, U., Couple, P., Tremblay, J.-E., Hartman, S., Pacariz, S.V., Salter, I., Ólafsson, J., 2017. The subpolar gyre regulates silicate concentrations in the North Atlantic. *Sci. Rep.* 7, 14576. <https://doi.org/10.1038/s41598-017-14837-4>.
- Hennige, S.J., Wicks, L.C., Kamenos, N.A., Perna, G., Findlay, H.S., Roberts, J.M., 2015. Hidden impacts of ocean acidification to live and dead coral framework. *Proc. R. Soc. B* 282, 20150990. <https://doi.org/10.1098/rspb.2015.0990>.
- Henry, L.-A., Roberts, J.M., 2007. Biodiversity and ecological composition of macrobenthos on cold-water coral mounds and adjacent off-mound habitat in the bathyal Porcupine Seabight. *NE Atlantic. Deep-Sea Res.* 54, 654–672. <https://doi.org/10.1016/j.dsr.2007.01.005>.
- Henry, L.-A., Roberts, L.M., 2017. Global biodiversity in cold-water coral reef ecosystems, in Rossi, S., Bramanti, L., Gori, A., Orejas, C. (Eds.), *Marine Animal Forests: The Ecology of Benthic Biodiversity Hotspots*. Springer International Publishing, 1–21.
- Henry, L.-A., Moreno Navas, J., Roberts, J.M., 2013. Multi-scale interactions between local hydrography, seabed topography, and community assembly on cold-water coral reefs. *Biogeosciences* 10, 2737–2746. <https://doi.org/10.5194/bg-10-2737-2013>.
- Howell, K.L., Davies, J.S., Allcock, A.L., Braga-Henriques, A., Buhl-Mortensen, P., Carreiro-Silva, M., Dominguez-Carrió, C., Durden, J.M., Foster, N.L., Game, C.A., Hitchin, B., Horton, T., Hosking, B., Jones, D.O.B., Mah, C., Marchais, C.L., Menot, L., Morato, T., Pearman, T.R.R., Piechaud, N., Ross, R.E., Ruhl, H.A., Saedi, H., Stefanoudis, P.V., Taranto, G.H., Thompson, M.B., Taylor, J.R., Tyler, P., Vad, J., Victorero, L., Vieira, R.P., Woodall, L.C., Xavier, J.R., Wagner, D., 2019. A framework for the development of a global standardised marine taxon reference image database (SMarTaR-ID) to support image-based analyses. *bioRxiv*. doi: 10.1101/670786.
- Huvenne, V.A.I., Bett, B.J., Masson, D.G., Le Bas, T.P., Wheeler, A.J., 2016. Effectiveness of a deep-sea cold-water coral marine protected area, following eight years of fisheries closure. *Biol. Conserv.* 200, 60–69. <https://doi.org/10.1016/j.biocon.2016.05.030>.
- ICES., 2016a. Report of the Working Group on the Ecosystem Effects of Fishing Activities (WGECO), 6–13 April 2016, Copenhagen, Denmark. ICES CM 2016/ACOM:25. 110 pp.
- ICES., 2016b. Celtic seas ecoregion. ICES Ecosystem Overviews. Retrieved from www.ices.dk/sites/pub/Publication%20Reports/Advice/2016/2016/Celtic_Sea_Ecoregion_Ecosystem_overview.pdf.
- ICES., 2018. Report of the Working Group on Ecosystem Effects of Fishing Activities (WGECO), 12–19 April 2018, San Pedro del Pinatar, Spain. ICES CM 2018/ACOM:27. 69 pp.
- ICES., 2019. Interim Report of the Working Group on Fisheries Benthic Impact and Trade-offs (WGFBIT), 12–16 November 2018, ICES Headquarters, Copenhagen, Denmark.

- ICES CM 2018/HAPISG:21. 74 pp.
- JNCC., 2018a. Statements on conservation benefits, condition & conservation measures for East Rockall Bank Special Area of Conservation. http://jncc.defra.gov.uk/pdf/EastRockallBank_ConservationStatements_V1.0.pdf.
- JNCC., 2018b. Statements on conservation benefits, condition & conservation measures for North West Rockall Bank Special Area of Conservation. http://jncc.defra.gov.uk/pdf/NWRB_ConservationStatements_V1.0.pdf.
- Johnson, D.E., Kenchington, E.L., 2019. Should potential for climate change refugia be mainstreamed into the criteria for describing EBSAs? *Conserv. Lett.* 12, e12634. <https://doi.org/10.1111/conl.12634>.
- Johnson, D., Adelaide Ferreira, M., Kenchington, E., 2018. Climate change is likely to severely limit the effectiveness of deep-sea ABMTs in the North Atlantic. *Mar. Pol.* 87, 111–122. <https://doi.org/10.1016/j.marpol.2017.09.034>.
- Jones, D.O.B., Hudson, I.A., Bett, B.J., 2006. Effects of physical disturbance on the cold-water megafaunal communities of the Faroe-Shetland Channel. *Mar. Ecol. Prog. Ser.* 319, 43–54. <https://doi.org/10.3354/meps319043>.
- Joubin, M.L., 1922. Les coraux de mer profonde nuisibles aux chalutiers. Notes et mémoires, office scientifique et technique des pêches maritimes 18, 15 pp.
- Kazanidis, G., Witte, U.F.M., 2016. The trophic structure of *Spongisorites coralliophaga* coral rubble communities at two northeast Atlantic cold-water coral reefs. *Mar. Biol. Res.* 12, 932–947. <https://doi.org/10.1080/17451000.2016.1216569>.
- Kazanidis, G., Henry, L.-A., Roberts, J.M., Witte, U.F.M., 2016. Biodiversity of *Spongisorites coralliophaga* (Stephens, 1915) on coral rubble at two contrasting cold-water coral reef settings. *Coral Reefs* 35, 193–208.
- Kazanidis, G., Vad, J., Henry, L.-A., Neat, F., Berx, B., Georgoulas, K., Roberts, J.M., 2019. Distribution of deep-sea sponge aggregations in an area of multisectoral activities and changing oceanic conditions. *Frontiers Mar. Sci.* 6, 163. <https://doi.org/10.3389/fmars.2019.00163>.
- Kenchington, E., Callery, O., Davidson, F., Grehan, A., Morato, T., Appiott, J., Davis, A., Dunstan, P., Du Preez, C., Finney, J., González-Irusta, J.M., Howell, K., Knudby, A., Lacharité, M., Lee, J., Murillo, F.J., Beazley, L., Roberts, J.M., Roberts, M., Rooper, C., Rowden, A., Rubidge, E., Stanley, R., Stirling, D., Tanaka, K.R., Vanhatalo, J., Weigel, B., Woolley, S., Yesson, C., 2019a. Use of Species Distribution Modeling in the Deep Sea. *Can. Tech. Rep. Fish. Aquat. Sci.* 3296: ix + 76, p.
- Kenchington, E., Wang, Z., Lirette, C., Murillo, F.J., Gujjarro, J., Yashayaev, I., Maldonado, M., 2019b. Connectivity modelling of areas closed to protect vulnerable marine ecosystems in the northwest Atlantic. *Deep-Sea Res. Part I* 143, 85–103. <https://doi.org/10.1016/j.dsr.2018.11.007>.
- Klitgaard, A.B., Tendal, O.S., 2004. Distribution and species composition of mass occurrences of large-sized sponges in the northeast Atlantic. *Prog. Oceanogr.* 61, 57–98. <https://doi.org/10.1016/j.pocean.2004.06.002>.
- Korpinen, S., Meidinger, M., Laamanen, M., 2013. Cumulative impacts on seabed habitats: an indicator for assessments of good environmental status. *Mar. Poll. Bull.* 74, 311–319. <https://doi.org/10.1016/j.marpolbul.2013.06.036>.
- Kroodsma, D.A., Mayorga, J., Hochberg, T., Miller, N.A., Boerder, K., Ferretti, F., Wilson, A., Bergman, B., White, T.D., Block, B.A., Woods, P., Sullivan, B., Costello, C., Worm, B., 2018. Tracking the global footprint of fisheries. *Science* 359, 904–907. <https://doi.org/10.1126/science.aao5646>.
- La Beur, L., Henry, L.-A., Kazanidis, G., Hennige, S., McDonald, A., Shaver, M.P., Roberts, J.M., 2019. Baseline assessment of marine litter and microplastic ingestion by cold-water coral reef benthos at the East Mingulay Marine Protected Area (Sea of the Hebrides, western Scotland). *Front. Mar. Sci.* 6, 80. <https://doi.org/10.3389/fmars.2019.00080>.
- Landres, P.B., Morgan, P., Swanson, F.J., 1999. Overview of the use of natural variability concepts in managing ecological systems. *Ecol. Appl.* 9, 1179–1188.
- Larcom, E.A., McKean, D.L., Brooks, J.M., Fisher, C.R., 2014. Growth rates, densities, and distribution of *Lophelia pertusa* on artificial structures in the Gulf of Mexico. *Deep Sea Res. Part I* 85, 101–109. <https://doi.org/10.1016/j.dsr.2013.12.005>.
- Larsson, A.I., Järnegen, J., Strömberg, S.M., Dahl, M.P., Lundälv, T., Brooke, S., 2014. Embryogenesis and larval biology of the cold-water coral *Lophelia pertusa*. *PLoS ONE* 9, e102222. <https://doi.org/10.1371/journal.pone.0102222>.
- Lavaleye, M., Duineveld, G., Bergman, M., van den Beld, I., 2017. Long-term baited lander experiments at a cold-water coral community on Galway Mound (Belgica Mound Province, NE Atlantic). *Deep-Sea Res II* 145, 22–32. <https://doi.org/10.1016/j.dsr2.2015.12.014>.
- Lavallé, P., Beaumont, J.-F., 2015. Why we should put some weight on weights. Survey Insights: Methods from the Field, Weighting: Practical Issues and ‘How to’ Approach. *Surv. Methods: Insights Field*. DOI:10.13094/SMIF-2015-00001.
- Le Danois, E., 1948. Les Profondeurs de la Mer. Payot, Paris.
- Levin, L.A., Bett, B.J., Gates, A.R., Heimbach, P., Howe, B.M., Janssen, F., McCurdy, A., Ruhl, H.A., Snelgrove, P., Stocks, K.I., Bailey, D., Baumann-Pickering, S., Beaverson, C., Benfield, M.C., Booth, D.J., Carreiro-Silva, M., Colaço, A., Eblé, M.C., Fowler, A.M., Gjerde, K.M., Jones, D.O.B., Katsumata, K., Kelley, D., Le Bris, N., Leonard, A.P., Lejzerowicz, F., Macreadie, P.I., McLean, D., Meitz, F., Morato, T., Netburn, A., Pawlowski, J., Smith, C.R., Sun, S., Uchida, H., Vardaro, M.F., Venkatesan, R., Weller, R.A., 2019. Global observing needs in the deep ocean. *Front. Mar. Sci.* 6, 241. <https://doi.org/10.3389/fmars.2019.00241>.
- Lopes, M., Murta, A.G., Cabral, H.N., 2006. The ecological significance of the zooplanktivores, snipefish *Macroramphosus* spp. and boarfish *Capros aper*, in the food web of the south-east North Atlantic. *J. Fish Biol.* 69, 363–378. <https://doi.org/10.1111/j.1095-8649.2006.01093.x>.
- Lopez-Lopez, L., González-Irusta, J.M., Punzon, A., Serrano, A., 2017. Benthic litter distribution on circalittoral and deep-sea bottoms of the southern Bay of Biscay: analysis of potential drivers. *Cont. Shelf Res.* 144, 112–119. <https://doi.org/10.1016/j.csr.2017.07.003>.
- Lozano, P., Fernández-Salas, L.M., Hernández-Molina, F.J., Sánchez-Leal, R., Sánchez-Guillamón, O., Palomino, D., Farias, C., Mateo-Ramírez, A., López-González, N., García, M., Vázquez, J.-T., Vila, Y., Rueda, J.L., 2020. Multiprocess interaction shaping geomorphs and controlling substrate types and benthic community distribution in the Gulf of Cádiz. *Mar. Geol.* 423, 106139. <https://doi.org/10.1016/j.margeo.2020.106139>.
- Lunden, J.J., McNicholl, C.G., Sears, C.R., Morrison, C.L., Cordes, E.E., 2014. Acute survivorship of the deep-sea coral *Lophelia pertusa* from the Gulf of Mexico under acidification, warming and deoxygenation. *Front. Mar. Sci.* 1, 78. <https://doi.org/10.3389/fmars.2014.00078>.
- Magnússon, J.V., Magnússon J., 1995. The distribution, relative abundance, and biology of the deep-sea fishes of the Icelandic slope and Reykjanes Ridge. In: Hopper A.G. (eds) *Deep-Water Fisheries of the North Atlantic Oceanic Slope*. NATO ASI Series (Series E: Applied Sciences), vol 296. Springer, Dordrecht.
- Magnussen, E., Magnussen, M.D., 2009. Ecology of poor-cod (*Trisopterus minutus*) on the Faroe Bank. *Mar. Biol. Res.* 5, 133–142. <https://doi.org/10.1080/17451000802345841>.
- Maier, C., Weinbauer, M.G., Gattuso, J.-P., 2019. Cold-water corals as a result of global climate change. A synthesis, in Orejas, O., Jiménez, C., (Eds.), *Mediterranean Cold-Water Corals: Past, Present and Future*, Coral Reefs of the World 9. Springer Nature, Gewerbestrasse, pp. 517–529.
- Maldonado, M., Aguilar, R., Bannister, R. J., Bell, J. J., Conway, K. W., Dayton, P. K., Díaz, C., Gutt, J., Kelly, M., Kenchington, E.L.R., Leys, S.P., Pomponi, S.A., Rapp, H. T., Rützel, K., Tendal, O.S., Vacelet, J., Young, C.M., 2017. Sponge grounds as key marine habitats: a synthetic review of types, structure, functional roles, and conservation concerns, in: Rossi, S., Bramanti, L., Gori, A., Orejas, C. (Eds.), *Marine Animal Forests the Ecology of Benthic Biodiversity Hotspots*. Springer, Berlin, pp. 145–183.
- McCarthy, I.D., Cant, J., Marriott, A.L., 2018. Population biology of grey gurnard (*Eutrigla gurnardus* (L.); Triglidae) in the coastal waters of Northwest Wales. *J. Appl. Ichthyol.* 34, 896–905.
- McIntyre, F.D., Collie, N., Stewart, M., Scala, L., Fernandes, P.G., 2013. A visual survey technique for deep-water fishes: estimating anglerfish *Lophius* spp. abundance in closed areas. *J. Fish Biol.* 83, 739–753. <https://doi.org/10.1111/jfb.12114>.
- Menezes, G.M., Giacomello, E., 2013. Spatial and temporal variability of demersal fishes at Condor seamount (Northeast Atlantic). *Deep Sea Res. II* 98, 101–113. <https://doi.org/10.1016/j.dsr2.2013.08.010>.
- Menezes, G.M., Diogo, H., Giacomello, E., 2013. Reconstruction of demersal fisheries history on the Condor seamount, Azores archipelago (Northeast Atlantic). *Deep-Sea Res. II* 98, 190–203. <https://doi.org/10.1016/j.dsr2.2013.02.031>.
- Milligan, R.J., Spence, G., Roberts, J.M., Bailey, D.M., 2016. Fish communities associated with cold-water corals vary with depth and substratum type. *Deep-Sea Res. I* 114, 43–54. <https://doi.org/10.1016/j.dsr.2016.04.011>.
- Miloslavich, P., Bax, N.J., Simmons, S.E., Klein, E., Appeltans, W., Aburto-Oropeza, O., Andersen Garcia, M., Batten, S.D., Benedetti-Cecchi, L., Checkley Jr., D.M., Chiba, S., Duffy, J.E., Dunn, D.C., Fischer, A., Gunn, J., Kudela, R., Marsac, F., Müller-Karger, F.E., Obura, D., Shin, Y.-J., 2018. Essential ocean variables for global sustained observations of biodiversity and ecosystem changes. *Glob. Change Biol.* 24, 2416–2433. <https://doi.org/10.1111/gcb.14108>.
- Morato, T., Pitcher, T.J., Clark, M.R., Menezes, G., Tempera, F., Porteiro, F., Giacomello, E., Santos, R.S., 2010. Can we protect seamounts for research? A call for conservation. *Oceanogr.* 23, 190–199. <https://doi.org/10.5670/oceanog.2010.71>.
- Morato, T., González-Irusta, J.-M., Domínguez-Carrió, C., Wei, C.-L., Davies, A., Sweetman, A.K., Taranto, G.H., Beazley, L., García-Alegre, A., Grehan, A., Laffargue, P., Murillo, F.J., Sacau, M., Vaz, S., Kenchington, E., Arnaud-Haond, S., Callery, O., Chimentieri, G., Cordes, E., Egilsdóttir, H., Freieald, A., Gasbarro, R., Gutiérrez-Zárate, C., Gianni, M., Gilkinson, K., Wareham Hayes, V., Hebeln, D., Hedges, K., Henry, L.-A., Johnson, D., Koen-Alonso, M., Lirette, C., Mastrototaro, F., Menot, L., Moldotsova, T., Muñoz, P. D., Orejas, C., Pennino, M.G., Puerta, P., Ragnarsson, S.A., Ramiro-Sánchez, B., Rice, J., Rivera, J., Roberts, J.M., Ros, S.W., Rueda, J.L., Sampaio, I., Snelgrove, P., Stirling, D., Treble, M.A., Urra, J., Vad, J., van Oevelen, D., Watling, L., Walkusz, W., Wienberg, C., Woillez, M., Levin, L.A., Carreiro-Silva, M., 2020. Climate-induced changes in the suitable habitat of cold-water corals and commercially important deep-sea fishes in the North Atlantic. *Glob. Change Biol.* DOI: 10.1111/gcb.14996.
- Murillo, F.J., Serrano, A., Kenchington, E., Mora, J., 2016. Epibenthic assemblages of the Tail of the Grand Bank and Flemish Cap (northwest Atlantic) in relation to environmental parameters and trawling intensity. *Deep-Sea Res. I* 109, 99–122. <https://doi.org/10.1016/j.dsr.2015.08.006>.
- Myrberg, K., Korpinen, S., Uusitalo, L., 2019. Physical oceanography sets the scene for the Marine Strategy Framework Directive implementation in the Baltic Sea. *Mar. Pol.* 103591. <https://doi.org/10.1016/j.marpol.2019.103591>.
- Narayanaswamy, B.E., Bett, B.J., Hughes, D.J., 2010. Deep-water macrofaunal diversity in the Faroe-Shetland region (NE Atlantic): a margin subject to an unusual thermal regime. *Mar. Ecol.* 31, 237–246. <https://doi.org/10.1111/j.1439-0485.2010.00360.x>.
- Neat, F., Jamieson, A.J., Stewart, H.A., Narayanaswamy, B.E., Collie, N., Stewart, M., Lindley, T.D., 2018. Visual evidence of reduced seafloor conditions and indications of a cold-seep ecosystem from the Hatton-Rockall basin (NE Atlantic). *J. Mar. Biol. Assoc. UK* 99, 271–277. <https://doi.org/10.1017/S0025315418000115>.
- Nemati, H., Shokri, M.R., Ramezanzpour, Z., Pour, G.H.E., Muxika, I., Borja, A., 2018. Sensitivity of indicators matters when using aggregation methods to assess marine environmental status. *Mar. Poll. Bull.* 128, 234–239. <https://doi.org/10.1016/j.marpolbul.2018.01.031>.
- Nemati, H., Shokri, M.R., Ramezanzpour, Z., Pour, G.H.E., Muxika, I., Borja, A., 2017. Using multiple indicators to assess the environmental status in impacted and non-impacted bathing waters in the Iranian Caspian Sea. *Ecol. Indic.* 82, 175–182. <https://doi.org/10.1016/j.ecolind.2017.06.054>.

- Newton, A.W., Peach, K.J., Coull, K.A., Gault, M., Needle, C.L., 2008. Rockall and the Scottish haddock fishery. *Fish. Res.* 94, 133–140. <https://doi.org/10.1016/j.fishres.2008.03.012>.
- Orejas, C., Kenchington, E., Rice, J., Kazanidis, G., Palialexis, A., Johnson, D., Gianni, M., Danovaro, R., Roberts, J.M., in press. Towards a common approach to the assessment of the environmental status of deep-sea ecosystems in areas beyond national jurisdiction. *Mar. Pol.*
- OSPAR, 2017. Intermediate Assessment. <https://oap.ospar.org/en/ospar-assessments/intermediate-assessment-2017/>.
- Osterloff, J., Nilssen, I., Nattkemper, T.W., 2016. Computational coral feature monitoring for the fixed underwater Observatory LoVe. *IEEE Oceans*. <https://doi.org/10.1109/OCEANS.2016.7761417>.
- Parra, H.E., Pham, C.K., Menezes, G.M., Rosa, A., Tempera, F., Morato, T., 2017. Predictive modeling of deep-sea fish distribution in the Azores. *Deep-Sea Res. II* 145, 49–60. <https://doi.org/10.1016/j.dsr2.2016.01.004>.
- Pavlidou, A., Simbora, N., Pagou, K., Assimakopoulou, G., Gerakaris, V., Hatzianestis, I., Panayotidis, P., Pantazi, M., Papadopoulou, N., Reizopoulou, S., Smith, C., Triantaphyllou, M., Uyarra, M.C., Varkitzi, I., Vassilopoulou, V., Zeri, C., Borja, A., 2019. Using a holistic ecosystem-integrated approach to assess the environmental status of Saronikos Gulf, Eastern Mediterranean. *Ecol. Indic.* 96, 336–350. <https://doi.org/10.1016/j.ecolind.2018.09.007>.
- Payne, M.R., Egan, A., Fässler, S.M.M., Hátún, H., Holst, J.C., Jacobsen, J.A., Slotte, A., Loeng, H., 2012. The rise and fall of the NE Atlantic blue whiting (*Micromesistius poutassou*). *Mar. Biol.* 159, 475–487.
- Pham, C.K., Murillo, F.J., Lirette, C., Maldonado, M., Colaço, A., Ottaviani, D., Kenchington, E., 2019. Removal of deep-sea sponges by bottom trawling in the Flemish Cap area: conservation, ecology and economic assessment. *Sci. Rep.* 9, 15843. <https://doi.org/10.1038/s41598-019-52250-1>.
- Pham, C.K., Ramirez-Llodra, E., Alt, C.H.S., Amaro, T., Bergmann, M., Canals, M., Company, J.B., Davies, J., Duineveld, G., Galgani, F., Howell, K.L., Huvenne, V.A.I., Isidro, E., Jones, D.O.B., Lastras, G., Morato, T., Gomes-Pereira, J.N., Purser, A., Stewart, H., Tojeira, I., Tubau, X., van Rooij, D., Tyler, P.A., 2014. Marine litter distribution and density in European seas, from the shelves to the deep basins. *PLoS ONE* 9, e95839. <https://doi.org/10.1371/journal.pone.0095839>.
- Pham, C.K., Vandepere, F., Menezes, G., Porteiro, F., Isidro, E., Morato, T., 2015. The importance of deep-sea vulnerable marine ecosystems for demersal fish in the Azores. *Deep-Sea Res. I* 96, 80–88. <https://doi.org/10.1016/j.dsr.2014.11.004>.
- Piechaut, N., Hunt, C., Culverhouse, P.F., Foster, N.L., Howell, K.L., 2019. Automated identification of benthic epifauna with computer vision. *Mar. Ecol. Prog. Ser.* 615, 15–30. <https://doi.org/10.3354/meps12925>.
- Piroddi, C., Teixeira, H., Lynam, C.P., Smith, C., Alvarez, M.C., Mazik, K., Andonegi, E., Churilova, T., Tedesco, L., Chifflet, M., Chust, G., Galparsoro, I., Garcia, A.C., Kämäri, M., Kryvenko, O., Lassalle, G., Neville, S., Niquil, N., Papadopoulou, N., Rossberg, A.G., Suslin, V., Uyarra, M.C., 2015. Using ecological models to assess ecosystem status in support of the European Marine Strategy Framework Directive. *Ecol. Indic.* 58, 175–191. <https://doi.org/10.1016/j.ecolind.2015.05.037>.
- Priede, I.G., Godbold, J.A., King, N.J., Collins, M.A., Bailey, D.M., Gordon, J.D.M., 2010. Deep-sea demersal fish species richness in the Porcupine Seabight, NE Atlantic Ocean: global and regional patterns. *Mar. Ecol. Prog. Ser.* 31, 247–260. <https://doi.org/10.1111/j.1439-0485.2009.00330>.
- Prins, T.C., Borja, A., Simbora, N., Tsangaris, C., Van der Meulen, M.D., Boon, A.R., Menchaca, I., Gilbert A.J., 2014. Coherent geographic scales and aggregation rules for environmental status assessment within the Marine Strategy Framework Directive. Towards a draft guidance. *Deltas/AZTI/HCMR, Report 1207879-000-ZKS-0014* to the European Commission, Delft, 56 pages + annexes.
- Puerta, P., Johnson, C., Carreiro-Silva, M., Henry, L.-A., Kenchington, E., Morato, T., Kazanidis, G., Rueda, J.L., Urra, J., Ross, S., Wei, C.-L., González-Irusta, J.M., Arnaud-Haond, S., Orejas, C., 2020. Influence of Water Masses on the Biodiversity and Biogeography of Deep-Sea Benthic Ecosystems in the North Atlantic. *Front. Mar. Sci.* 7, 239. <https://doi.org/10.3389/fmars.2020.00239>.
- Puig, P., Canals, M., Company, J.B., Martín, J., Amblas, D., Lastras, G., Palanques, A., Calafat, A.M., 2012. Ploughing the deep sea floor. *Nat.* 489, 286–290. <https://doi.org/10.1038/nature11410>.
- Díaz-del-Río, V., Bruque, G., Fernández-Salas, L.M., Rueda, J.L., González, E., López, N., Palomino, D., López, F.J., Fariás, C., Sánchez, R., Vázquez, J.T., Rittlerott, C.C., Fernández, A., Marina, P., Luque, V., Oporto, T., Sánchez, O., García, M., Urra, J., Bárcenas, P., Jiménez, M.P., Sagarminaga, R., Arcos, J.M., 2014. Volcanes de fango del golfo de Cádiz. Proyecto LIFE + INDEMARES Fundación Biodiversidad del Ministerio de Agricultura, Alimentación y Medio Ambiente. pp. 1–132.
- Puscchedu, A., Bianchelli, S., Martín, J., Puig, P., Palanques, A., Masqué, P., Danovaro, R., 2014. Chronic and intensive bottom trawling impairs deep-sea biodiversity and ecosystem functioning. *Proc. Natl. Acad. Sci.* 201405454.
- Ragnarsson, S.A., Steingrimsdóttir, S.A., 2003. Spatial distribution of otter trawl effort in Icelandic waters: comparison of measures of effort and implications for benthic community effects of trawling activities. *ICES J. Mar. Sci.* 60, 1200–1215. [https://doi.org/10.1016/S1054-3139\(03\)00143-7](https://doi.org/10.1016/S1054-3139(03)00143-7).
- Ramirez-Llodra, E., Tyler, P.A., Baker, M.C., Bergstad, O.A., Clark, M.R., Escobar, E., Levin, L.A., Menot, L., Rowden, A.A., Smith, C.R., Van Dover, C.L., 2011. Man and the last great wilderness: human impact on the deep sea. *PLoS ONE* 6, e22588. <https://doi.org/10.1371/journal.pone.0022588>.
- Ramiro-Sánchez, B., González-Irusta, J.M., Henry, L.-A., Cleland, J., Yeo, I., Xavier, J.R., Carreiro-Silva, M., Sampaio, I., Spearman, J., Victorero, L., Messing, C.G., Kazanidis, G., Roberts, J.M., Murton, B., 2019. Characterization and mapping of a deep-sea sponge ground on the Tropic Seamount (Northeast Tropical Atlantic): implications for spatial management in the High Seas. *Front. Mar. Sci.* 6, 278. <https://doi.org/10.3389/fmars.2019.00278>.
- Rengstorf, A.M., Yesson, C., Brown, C., Grehan, A.J. High-resolution habitat suitability modelling can improve conservation of vulnerable marine ecosystems in the deep sea. *J. Biogeogr.* 40, 1702–1714. doi:10.1111/jbi.12123.
- Reveillard, J., Freiwald, A., Van Rooij, D., Le Guilloux, E., Altuna, A., Foubert, A., Vanreusel, A., Roy, K.O.-L., Henriot, J.P., 2008. The distribution of scleractinian corals in the Bay of Biscay, NE Atlantic. *Facies* 54, 317–331. <https://doi.org/10.1007/s10347-008-0138-4>.
- Robert, K., Jones, D.O.B., Huvenne, V.A.I., 2014. Megafaunal distribution and biodiversity in a heterogeneous landscape: the iceberg-scoured Rockall-Bank, NE Atlantic. *Mar. Ecol. Prog. Ser.* 501, 67–88. <https://doi.org/10.3354/meps10677>.
- Robert, K., Jones, D.O.B., Roberts, J.M., Huvenne, V.A.I., 2016. Improving predictive mapping of deep-water habitats: considering multiple model outputs and ensemble techniques. *Deep-Sea Res.* I 113, 80–89. <https://doi.org/10.1016/j.dsr.2016.04.008>.
- Roberts, J.M., Wheeler, A.J., Freiwald, A., 2006. Reefs of the deep: the biology and geology of cold-water coral ecosystems. *Science* 312, 543–547. <https://doi.org/10.1126/science.1119861>.
- Roberts, J.M., Davies, A.J., Henry, L.-A., Dodds, L.A., Duineveld, G.C.A., Lavaleye, M.S.S., Maier, C., van Soest, R.W.M., Bergman, M.J.N., Hühnerbach, V., Huvenne, V.A.I., Sinclair, D.J., Watmough, T., Long, D., Green, S.L., van Haren, H., 2009. Mingulay Reef Complex: An interdisciplinary study of cold-water coral habitat, hydrography and biodiversity. *Mar. Ecol. Prog. Ser.* 397, 139–151. <https://doi.org/10.3354/meps08112>.
- Roberts, J.M., Brown, C.J., Long, D., Bates, C.R., 2005. Acoustic mapping using a multibeam echosounder reveals cold-water coral reefs and surrounding habitats. *Coral Reefs* 24, 654–669. <https://doi.org/10.1007/s00338-005-0049-6>.
- Roberts, J.M., Long, D., Wilson, J.B., Mortensen, P.B., Gage, J.D., 2003. The cold-water coral *Lophelia pertusa* (Scleractinia) and enigmatic seabed mounds along the north-east Atlantic margin: are they related? *Mar. Poll. Bull.* 46, 7–20. [https://doi.org/10.1016/S0025-326X\(02\)00259-X](https://doi.org/10.1016/S0025-326X(02)00259-X).
- Roberts, J.M., Harvey, S.M., Lamont, P.A., Gage, J.D., Humphery, J.D., 2000. Seabed photography, environmental assessment and evidence for deep-water trawling on the continental margin west of the Hebrides. *Hydrobiol.* 441, 173–183. <https://doi.org/10.1023/A:1017550612340>.
- Rueda, J.L., González-García, E., Krutzky, C., López-Rodríguez, F.J., Bruque, G., López-González, N., Palomino, D., Sánchez, R.F., Vázquez, J.T., Fernández-Salas, L.M., Díaz-del-Río, V., 2016. From chemosynthesis-based communities to cold-water corals: vulnerable deep-sea habitats of the Gulf of Cádiz. *Mar. Biodiv.* 46, 473–482. <https://doi.org/10.1007/s12526-015-0366-0>.
- Stratmann, T., Soetaert, K., Wei, C.-L., Lin, Y.-S., van Oevelen, D., 2019. The SCOC database, a large, open, and global database with sediment community oxygen consumption rates. *Sci. Data* 6, 242. <https://doi.org/10.1038/s41597-019-0259-3>.
- Strömberg, S.M., Larsson, A.I., 2017. Larval behavior and longevity in the cold-water coral *Lophelia pertusa* indicate potential for long distance dispersal. *Front. Mar. Sci.* 4, 411. <https://doi.org/10.3389/fmars.2017.00411>.
- Sweetman, A.K., Thurber, A.R., Smith, C.R., Levin, L.A., Mora, C., Wei, C.-L., Gooday, A.J., Jones, D.O.B., Rex, M., Yasuhara, M., Ingels, J., Ruhl, H.A., Frieder, C.A., Danovaro, R., Würzberg, L., Baco, A., Grube, B.M., Pasulka, A., Meyer, K.S., Dunlop, K.M., Henry, L.-A., Roberts, J.M., 2017. Major impacts of climate change on deep-sea benthic ecosystems. *Elem. Sci. Anth.* 5, 4. <https://doi.org/10.1525/elementa.203>.
- Teixeira, H., Berg, T., Uusitalo, L., Führe, K., Heiskanen, A.-S., Mazik, K., Lynam, C., Neville, S., Rodriguez, J.G., Papadopoulou, N., Moncheva, S., Churilova, T., Krivenko, O., Krause-Jensen, D., Zaiko, A., Verissimo, H., Pantazi, M., Carvalho, S., Patrício, J., Uyarra, M.C., Borja, A., 2016. A catalogue of marine biodiversity indicators. *Front. Mar. Sci.* 3 (10), 3389. <https://doi.org/10.3389/fmars.2016.00207>.
- Tempera, F., Giacomello, E., Mitchell, N., Campos, A.S., Henriques, A.B., Bashmachnikov, I., Martins, A., Mendonça, A., Morato, T., Colaço, A., Porteiro, F.M., Catarino, D., Gonçalves, J., Pinho, M.R., Isidro, E.J., Santos, R.S., Menezes, G., 2012. Mapping the Andor seamount seafloor environment and associated biological assemblages (Azores, NE Atlantic), in: Baker, E., Harris, P. (Eds.), *Seafloor geomorphology as benthic habitat: Geohab Atlas of Seafloor Geomorphic Features and Benthic Habitats*. Elsevier, New York, pp. 807–818.
- Tubau, X., Canals, M., Lastras, G., Rayo, X., Rivera, J., Amblas, D., 2015. Marine litter on the floor of deep submarine canyons of the Northwestern Mediterranean Sea: The role of hydrodynamic processes. *Prog. Oceanogr.* 134, 379–403. <https://doi.org/10.1016/j.pocean.2015.03.013>.
- Uusitalo, L., Blanchet, H., Andersen, J.H., Beauchard, O., Berg, T., Bianchelli, S., Cantafaro, A., Carstensen, J., Carugati, L., Cochrane, S., Danovaro, R., Heiskanen, A.-S., Karvinen, V., Moncheva, S., Murray, C., Neto, J.M., Nygård, H., Pantazi, M., Papadopoulou, N., Simbora, N., Srébaliené, G., Uyarra, M.C., Borja, A., 2016. Indicator-based assessment of marine biological diversity—lessons from 10 case studies across the European seas. *Front. Mar. Sci.* 3, 159. <https://doi.org/10.3389/fmars.2016.00159>.
- Vad, J., Kazanidis, G., Henry, L.-A., Jones, D.O.B., Gates, A.R., Roberts, J.M., 2020. Environmental controls and anthropogenic impacts on deep-sea sponge grounds in the Faroe-Shetland Channel, NE Atlantic: the importance of considering spatial scale to distinguish drivers of change. *ICES J. Mar. Sci.* 77, 451–461. <https://doi.org/10.1093/icesjms/fsz185>.
- Vad, J., Kazanidis, G., Henry, L.-A., Jones, D.O.B., Tendal, O.S., Christiansen, S., Henry, T.B., Roberts, J.M., 2018. Potential impacts of offshore oil and gas activities on deep-sea sponges and the habitats they form. *Adv. Mar. Biol.* 79, 33–60. <https://doi.org/10.1016/bs.amb.2018.01.001>.
- Vad, J., Orejas, C., Moreno-Navas, J., Findlay, H.S., Roberts, J.M., 2017. Assessing the living and dead proportions of cold-water coral colonies: implications for deep-water Marine Protected Area monitoring in a changing ocean. *PeerJ* 5, e3705. <https://doi.org/10.7717/peerj.3705>.
- Van den Beld, I.M.J., Bourillet, J.-F., Arnaud-Haond, S., de Chambure, L., Davies, J.S.,

- Guillaumont, B., Olu, K., Menot, L., 2017a. Cold-water coral habitats in submarine canyons of the Bay of Biscay. *Front. Mar. Sci.* 4, 118. <https://doi.org/10.3389/fmars.2017.00118>.
- Van den Beld, I.M.J., Guillaumont, B., Menot, L., Bayle, C., Arnaud-Haond, S., Bourillet, J.-F., 2017b. Marine litter in submarine canyons of the Bay of Biscay. *Deep-Sea Res. Part II: Top. Stud. Oceanogr.* 145, 142–152.
- Van Dover, C.L., Ardron, J.A., Escobar, E., Gianni, M., Gjerde, K.M., Jaeckel, A., Jones, D.O.B., Levin, L.A., Niner, H.J., Pendleton, L., Smith, C.R., Thiele, T., Turner, P.J., Watling, L., Weaver, P.P.E., 2017. Biodiversity loss from deep-sea mining. *Nat. Geosci.* 10, 464–465. <https://doi.org/10.1038/ngeo2983>.
- Van Engeland, T., Godø, O.R., Johnsen, E., Duineveld, G.C.A., van Oevelen, D., 2019. Cabled ocean observatory data reveal food supply mechanisms to a cold-water coral reef. *Prog. Oceanogr.* 172, 51–64. <https://doi.org/10.1016/j.pocean.2019.01.007>.
- Vieira, R.P., Trueman, C.N., Readdy, L., Kenny, A., Pinnegar, J.K., 2019. Deep-water fisheries along the British Isles continental slopes: status, ecosystem effects and future perspectives. *J. Fish. Biol.* 94, 981–992. <https://doi.org/10.1111/jfb.13927>.
- Vieira, R.P., Bett, B.J., Jones, D.O.B., Durden, J.M., Morris, K.J., Cunha, M.R., Trueman, C.N., Ruhl, H.R., 2020. Deep-sea sponge aggregations (*Pheronema carpenteri*) in the Porcupine Seabight (NE Atlantic) potentially degraded by demersal fishing. *Prog. Oceanogr.* 183, 102189.