

Bioeconomic simulation analysis of hake and red mullet fishery in the Gulf of Saronikos (Greece)

GORKA MERINO¹, CONSTANTINA KARLOU-RIGA², IOANNA ANASTOPOULOU²,
FRANCESC MAYNOU¹ and JORDI LLEONART³

¹ Institut de Ciències del Mar - CSIC, Psg. Marítim de la Barceloneta 37-49, 08003 Barcelona, Spain.
E-mail: gmerino@icm.csic.es

² Ministry of Rural Development and Food, Fisheries Laboratory, Karaoli and Demetriou 15, 18531 Piraeus, Greece.

³ FAO, Via delle Terme di Caracalla, 00153 Rome, Italy.

SUMMARY: Hake (*Merluccius merluccius*) and red mullet (*Mullus barbatus*) are two of the most important species in Greek fisheries due to their high commercial interest. Both have been reported to be overexploited and in need of management to preserve the continuity of their exploitation. Hake is exploited by trawlers and red mullet by both trawlers and beach seiners in Saronikos Gulf (Greece). The MEFISTO bioeconomic simulation model is applied in order to test the interaction between trawlers and beach seiners through the age-specific fishing mortality applied by each fleet to the red mullet stock. The effects of the withdrawal of some beach seiners in 2002 and the increase in trawl mesh size that has already been implemented (from 28 mm to 40 mm stretched mesh) are tested jointly with alternative management scenarios such as the complete withdrawal of beach seiners and effort reduction in trawler activity. The analysis of the simulation results is based on the evolution of biological and economic indicators through 15-year stochastic projections. It is shown that limiting fishing effort and improving selectivity patterns of the trawl fleet would be beneficial for the recovery of the populations and for the profitability of the fishery. In addition to the increase in trawl mesh size, a further fishing effort reduction of 12% is recommended for the trawling fleet. Conversely, limiting or completely removing the beach seiner fleet would protect red mullet juveniles but would not significantly increase the profitability of the trawling fleet, and it would cause unemployment.

Keywords: Saronikos Gulf, trawl fisheries, beach seiner, European hake, red mullet, fisheries management, bioeconomic model.

RESUMEN: La merluza (*Merluccius merluccius*) y el salmonete (*Mullus barbatus*), debido a su gran interés comercial, son las dos especies más importantes de las pesquerías griegas. Ambas especies se encuentran en situación de sobreexplotación y necesitadas de una gestión adecuada que proteja la continuidad de su explotación. En el Golfo de Saronikos (Grecia), la merluza es explotada por la flota de arrastre mientras que el salmonete lo pescan las flotas de arrastre y la de cerco de playa. Se utiliza el modelo de simulación MEFISTO para el análisis de la interacción de ambas flotas a través de las mortalidades pesqueras aplicadas sobre las clases de edad del salmonete. En el presente trabajo se evalúan los efectos de la retirada de algunos cerqueros que tuvo lugar en 2002 y del incremento del ancho de malla (desde 28 mm a 40 mm) que tuvo lugar en 2000, así como algunos escenarios de gestión alternativos como la completa retirada de la flota de cerco o la reducción del esfuerzo pesquero de la flota de arrastre. El análisis de las simulaciones estocásticas se presenta a través de la evolución de los indicadores bioeconómicos durante 15 años. Se muestra que la limitación del esfuerzo pesquero y la mejora en los parámetros de selectividad de la flota de arrastre serían beneficiosos tanto desde un punto de vista económico como conservacionista. Por otro lado, se recomienda una reducción de esfuerzo del 12%. Por el contrario, la limitación o retirada de la flota de cerco de playa causaría un problema de desempleo y no permitiría aumentar los beneficios de la flota de arrastre, sin llegar a ser beneficioso para las poblaciones explotadas.

Palabras clave: Golfo de Saronikos, pesquería de arrastre, cerco de playa, merluza europea, salmonete, gestión de pesquerías, modelo bioeconómico.

INTRODUCTION

Techniques based on stochastic simulation models have been developed in recent years to evaluate alternative management strategies of fisheries (Punt, 1992, 1993; Sparre and Willman, 1993; Horwood, 1994; Ulrich *et al.*, 2002; Griffin, 2003; Leonart *et al.*, 2003). These techniques allow the projection of biological and economic indicators to be examined over time, under different conditions or scenarios derived from the alternative management strategies being tested.

A bioeconomic fisheries model (MEFISTO) taking into account the specificities of Mediterranean fisheries has been developed by Leonart and collaborators (Leonart *et al.*, 2003; Maynou *et al.*, 2006). Mediterranean fisheries are typically multi-species and have a cost structure based on the share system, in which the economic agent is the individual vessel (Leonart and Maynou, 2003). Management of Mediterranean fisheries is not adaptive, as in other European fisheries, i.e. assessments of stocks in one year are not used to implement new management measures in the following year. MEFISTO allows a wide range of management measures to be tested, including those typically employed by Mediterranean fisheries managers. For this reason, it was chosen as the tool to evaluate different management strategies for the trawl and beach seiner fleets of Saronikos Gulf fishery.

Saronikos Gulf has a large variety of sea bottom types and a variety of fisheries take place in the area (Karlou-Riga and Vrantzas, 2001). Moreover, protection from the winds and the proximity of the most important Greek fish market (Piraeus) makes fishing in this zone a very attractive activity. The total landings recorded for the year 2001 in the area were 8,347 t (NSSG, 2000), representing 10% of the total catch in Greek waters. The value of landings for 2001 was €250,280 (NSSG, 2000). Hake landings constitute 3.8% of the total annual fish landings in the country and 3.1% of the total catch in Saronikos Gulf (NSSG, 2003), but the landings of hake by trawlers in Saronikos Gulf represent 52.4% of the national hake landings. Red mullet landings constitute 2.1% of the total annual landings in the country and 1.8% of the total landings in Saronikos Gulf (NSSG, 2003). Red mullet is fished essentially by trawlers and beach seiners.

European hake, *Merluccius merluccius*, and red mullet, *Mullus barbatus*, are two of the most impor-

tant resources for the bottom trawl fleets in Greece (eastern Mediterranean), in terms of both catch and economic value. Saronikos Gulf, located in central Greece, is a semi-enclosed area with a maximum depth of up to 400 m. The fishing grounds for the trawling fleet are distributed in a depth range between 100 and 400 m although trawlers are scarcely operative at 400 m (western limit of the Gulf). The trawling fleet operating in Saronikos Gulf is composed by eighteen vessels that, in addition to hake and red mullet, have a very heterogeneous landings composition including species such as red pandora (*Pagellus erythrinus*), striped mullet (*Mullus surmuletus*), picarel (*Spicara smaris*), horse mackerel (*Trachurus* sp.), deep-sea shrimp (*Parapenaeus longirostris*), Norway lobster (*Nephrops norvegicus*), common octopus (*Octopus vulgaris*) and squid (*Loligo vulgaris*). Trawlers operate for 8 months a year, from October to the end of May (Karlou-Riga and Vrantzas, 2001).

Beach seiners operate in shallow waters up to 50 m depth. The beach seiner fleet in Saronikos Gulf was composed of 35 vessels in 2000. The fleet targets red mullet, but its landings also include picarel, red pandora, striped mullet and squid. Beach seiners operate for 6 months a year, from October to March.

The stocks of the two species analysed here have been assessed (Karlou-Riga *et al.*, 2000; Karlou-Riga and Vrantzas, 2001; Karlou-Riga *et al.*, 2005) in the framework of the Subcommittee on Stock Assessment (SCSA) of the General Fisheries Commission of the Mediterranean (GFCM).

Conflicts between inshore fleets (beach seiners, netters and longliners) and trawlers arise for different reasons. Netters and longliners perceive that beach seiners are harmful to sea-grass beds of *Posidonia oceanica* and to juveniles of red mullet. On the other hand, net and longline fleets complain that they lose their gears to trawlers when they operate in fishing grounds deeper than 100 m. As a consequence, policy proposals aimed at reducing the conflict are being considered. We used the MEFISTO bioeconomic fisheries simulation model to evaluate different strategies that have been designed: i) a change in the trawlers' mesh size which took place in 2000 and the withdrawal of eleven beach seiners in 2002; ii) a reduction of the fishing period for trawlers; and iii) total withdrawal of the beach seine fleet. The results of the simulations are examined, considering the effect of the management strategies on the population of the two main stocks (hake and

red mullet) and the effect on the profitability of the fishery.

MATERIAL AND METHODS

The model

The MEFISTO bioeconomic simulation model (Leonart *et al.*, 2003), tailored to Mediterranean fisheries specificities, includes the following features:

i. Management of Mediterranean fisheries is mainly based on input controls, i.e. effort control and technical measures (selectivity). The MEFISTO simulation model includes the possibility of testing the effects of removing vessels from the fishery or reducing their fishing time, as well as changing the selectivity patterns by age class.

ii. Catchability dynamics. In an input control regulation scheme, fishermen have the possibility of increasing fishing mortality through technical improvements, which result in increased catchability. The model can be used to simulate the effect of investments in technology that would increase the catchability of individual vessels in time.

The model comprises three submodels: The stock box, the market box and the fisherman (or decision) box.

The stock box

The stock box simulates the dynamics of the resource and uses the standard equations of population dynamics. The model accepts two categories of exploited populations: the target and the secondary species. The secondary species dynamics is directly related to the target species dynamics (see below). The target population is described through an age-structured model (Schnute, 1985). The number of individuals of age $a+1$ at time $t+1$ is:

$$N_{a+1,t+1} = N_{a,t} \exp(-Z_{a,t}) \tag{1}$$

where $N_{a,t}$ is the number of individuals of age a at time t and $Z_{a,t}$ is the total mortality when age is changed from a to $a+1$.

The average number of individuals during the age-class interval a is:

$$\bar{N}_{a,t} = N_{a,t} \frac{1 - \exp(-Z_{a,t})}{Z_{a,t}} \tag{2}$$

The total mortality is the combination of fishing mortality $F_{a,t}$ and natural mortality, M_a , assumed to be constant over time:

$$Z_{a,t} = F_{a,t} + M_a \tag{3}$$

The fishing mortality applied to a target species is the sum of the mortalities applied by the gears exploiting it. The fishing mortality for each gear is calculated with the gear selectivity (S) and catchability parameters (q), jointly with the fishing effort (E) applied by each gear. Selectivity and catchability are related to age (a), time (t) and gear (g). This equation makes it possible to test the effects in gear selectivity patterns.

$$F_{a,t} = \sum_g^G F_{a,t,g} \tag{4}$$

$$F_{a,t,g} = S_{a,g} \cdot E_{t,g} \cdot q_{a,t,g} \tag{5}$$

The number of individuals needs to be transformed into mass units to compute spawning stock biomass (SSB) and catches (C). This is obtained through von Bertalanffy's growth equation (Eq. 6), which relates age (a) of the individuals to an estimated length (l_a) through an asymptotic length parameter (L_∞), a particular age at length 0 (t_0) and a growth rate (k), and the length-weight relationship (Eq. 7), which relates the length (l_a) of a targeted individual of age a to its weight (w_a) through two parameters (α, β):

$$l_a = L_\infty (1 - \exp(-k(a - t_0))) \tag{6}$$

$$w_a = \alpha \cdot (l_a)^\beta \tag{7}$$

With the mean weights by age, the mean biomass by age is calculated (Eq. 8):

$$\bar{B}_a = \bar{N}_a \cdot w_a \tag{8}$$

The total mean biomass of a population of a species with a maximum age m is:

$$\bar{B} = \sum_{a=1}^m \bar{B}_a \tag{9}$$

The catches of age a in mass units can also be calculated for a fishing gear g and time t :

$$C_{a,t,g} = F_{a,t,g} \bar{B}_{a,t} \tag{10}$$

The total catch by age, gear and both are, respectively:

$$C_{a,t} = \sum_{g=1}^G C_{a,t,g} ; C_{t,g} = \sum_{a=1}^m C_{a,t,g}$$

and
$$C_t = \sum_{a=1}^m \sum_{g=1}^G C_{a,t,g} \quad (11, 12, 13)$$

$$SSB_t = \sum_{a=1}^m SSB_{a,t} = \sum_{a=1}^m I_a \cdot \bar{B}_{a,t} \quad (14)$$

To carry out the simulations, a model of the number of fish incorporated in the population, recruitment, at each time t is required ($N_{0,t}$). The models employed typically relate spawning stock biomass to recruitment, but due to the absence of information on stock/recruitment relationships for the species studies, the simulations were run with constant recruitment ($N_0 = R$).

At vessel level, the dynamics of catchability (related to age a , vessel v and time t) are given by Equation 15. The initial catchability of a vessel v in year 0 is $Q_{a,0,v}$. The parameter τ is the annual increase in catchability. The annual increase in catchability coefficient simulates the constant increase in technology.

$$q_{a,t,v} = Q_{a,0,v} \cdot (1 + \tau)^t \quad (15)$$

In addition to describing the population dynamics of a finite number of target species, the model also includes a description of a pool of secondary species fished jointly with the target species. The model does not incorporate ecological or other inter-species interactions (such as predation or competition). The secondary species landings (Y) dynamics are expressed as a function of the landings of target species (C) through an empirical relationship (Eq. 16):

$$Y = \mu + \nu \cdot C \quad (16)$$

where μ and ν are parameters estimated by linear regression from data on landings for target and secondary species.

The market box

The market sub-model describes the price formation process, transforming the landings of each individual vessel into revenues. The revenues of a vessel (TR_v) are the income derived from the sale of the tar-

get species at price p and secondary species at price ps .

$$TR_v = p \cdot C + Y \cdot ps \quad (17)$$

The price of the target and the secondary species are taken as constant over time.

The fisherman box

In the model, the individual vessel, as an economic agent, assumes that production depends on the effort and catchability applied. The costs of the time period t are deducted from the revenues, producing the net results or profits. Depending on the sign (negative or positive) and the magnitude of the profits, the individual vessel may change its effort or catchability in the next time period, constrained by the maximum legal limit of number of days at sea or the possibility of investing in technology, as imposed by legislation.

The balance between revenues and costs will thus determine fishermen's decision. The expenses that the fishermen must meet are divided into 7 groups (Table 1):

C1 Trade costs. The model considers trade costs to be those that can be expressed as a percentage of the total revenues (TR_v) obtained by a vessel (v). They include fishermen's association taxes, commercialisation taxes, local taxes, the sales process, etc. They are expressed as a percentage of the total revenues ($c1_p$). The percentage of revenues ($c1_p$) paid is the same for all the vessels in a fleet, hence this percentage is introduced at fleet level.

$$C1_v = c1_p TR_v \quad (18)$$

C2 Daily costs. These are the costs derived from the fishing activity. They are related to the vessels' costs of a unit of effort ($c2_v$). As the unit of effort is the number of days at sea, these costs represent the cost of a particular vessel operating for one day. They include fuel costs, net mending, daily food expenses and any other daily costs.

$$C2_v = c2_v E_v \quad (19)$$

C3 Labour costs. These are composed of the share corresponding to the owner after deducting the common costs $C1$ and $C2$. The percentage or share ($c3_p$) is the same for all vessels in a fleet, hence this percentage is introduced at fleet level.

$$C3_v = c3_f \cdot (TR_v - C1_v - C2_v) \quad (20)$$

C4 Compulsory costs. Yearly costs incurred by the fisherman for keeping his business legal. The model assumes them to be constant and related to the vessel.

C5 Maintenance costs. The costs required to maintain the vessel at its maximum performance level. They are included in the reinstatement of the used capital, repairs, etc.

C6 Opportunity costs. The cost of using the capital invested (Inv_v) and the rate of the country's public debt ($c6_c$). This determines what the capital's alternative profitability would be if it were invested elsewhere in a fixed time. It indicates the revenues lost to the fisherman by investing in the fishing activity.

$$C6_v = c6_c \cdot Inv_v \quad (21)$$

C7 Financial costs. Interest and capital return on bank loans. In case of negative profits, debts arise and any further investment requires bank loans. *C7* depends on banking interest rates ($c7$) and the individual debt (D_v) incurred. The interest rate is given at country level.

$$C7_v = c7_c \cdot D_v \quad (22)$$

D_v has an upper limit (maximum debt accepted by the banks) depending on the total capital invested. It simulates that the bank will not be interested in lending more than the maximal percentage authorised by the bank multiplied by the capital of the vessel.

Regarding the fishermen's financial health after one unit of time, there exist four possible results. The simulation model describes fishermen's priorities in response to these results.

1) Positive profits

The profits in the model are totally reinvested in increasing effort up to the legal maximum effort.

2) Negative profits

The fisherman will tend to maintain the same level of effort by borrowing money through bank loans. The loans each year are accumulated until the bank's maximum loan is reached. In the model, this limit is determined by the capital of the ship and the maximum capital percentage determined by each bank. For simulation purposes it is introduced as a country level parameter. If credit is obtained, the result is that catchability and effort are maintained, but the next year a new added cost (financial cost, *C7*) will exist in the vessel's cost structure. When the credit limit is exceeded, the possibility of obtaining new loans disappears and we examine the third possibility below.

3) Negative profits and no loan, but unavoidable costs can still be met

If the fisherman cannot cover the costs and can no longer borrow money to maintain catchability and effort, other costs must be reduced. The fisherman will reduce all the avoidable costs in the short term, starting with the avoidable part of maintenance costs ($C5'$). This will produce a capital reduction but effort will be maintained. The fisherman will try to fish the maximum days allowed but if the losses are greater than the avoidable maintenance costs, he will be forced to reduce other costs. The only option is to reduce variable costs (*C2*). As a consequence, the fuel consumption will be reduced by reducing fishing effort so as to limit the variable daily expenses incurred.

4) Negative profits, no loan, and unavoidable costs cannot be met

If losses become greater than the avoidable costs, the fisherman can no longer meet these unavoidable expenses and he ceases fishing. In this case, the individual effort disappears from the fishery. The decrease of fishing mortality will be to the benefit of the remaining vessels.

TABLE 1. – Cost analysis by vessel.

Short-term costs	Variable costs	Trade costs	C1	Function of catch
		Daily costs	C2	Function of effort
		Labour costs	C3	Function of effort
	Fixed costs	Compulsory costs	C4	Constant Function of profits ⁽¹⁾ , constant ⁽²⁾
		Maintenance costs	C5	
Long-term costs		Opportunity costs	C6	Function of price of money
		Financial costs	C7	Function of interest rates

¹ Costs are devoted to improvement of the vessel (capital increase) and are avoidable.

² Represent the minimum unavoidable maintenance costs of the vessel.

TABLE 2. – Species growth parameters.

Hake (<i>Merluccius merluccius</i>)		Red mullet (<i>Mullus barbatus</i>)	
Length-weight relationship	Von Bertalanffy growth equation	Length-weight relationship	Von Bertalanffy growth equation
$\alpha = 0.006$ $\beta = 3.13$	L inf (cm) = 73.12 k (years ⁻¹) = 0.2725 t ₀ (years) = -0.15	$\alpha = 0.007$ $\beta = 3.24$	L inf (cm) = 24.58 k (years ⁻¹) = 0.29 t ₀ (years) = -1.08

TABLE 3. – Species cohort initial conditions.

Age	No ind.	Hake (<i>Merluccius merluccius</i>)			No ind.	Red mullet (<i>Mullus barbatus</i>)			
		F (trawl)	M	Maturity		F (trawl)	F (seine)	M	Maturity
0	8673166 (R)	0.82	0.43	0.019	6038294 (R)	0.052	0.016	0.46	0.169
1	2485852	2.272	0.43	0.167	3564545	0.439	0.115	0.46	0.717
2	166664	1.778	0.43	0.511	1293030	0.778	0.115	0.46	0.894
3	18321	1.141	0.43	0.905	334134	0.853	0.07	0.46	0.975
4	3806	0.652	0.43	1	83847	1.167	0.073	0.46	0.997
5	1290	0.290	0.43	1	15309	0.843	0.024	0.46	1
6	628	0.500	0.43	1	4061	1.18	0.000	0.46	1
7	-	-	-	-	788	0.5	0.000	0.46	1

Simulation

The objective of the simulation model is to carry out projections starting from the current situation forwards into the future with the purpose of analysing the behaviour of the fishery under different management actions. The simulation model is projected 15 years under stochastic conditions (1000 simulation runs), assuming uncertainty in the recruitment process (lognormal distribution function with mean = R in Table 3 and $sd = 0.1$). The results of the simulations are probability distributions of the selected indicators (biomass, spawning stock biomass (SSB), profits by fleet and fishing mortality), represented by the mean, 5 and 95% confidence levels.

Data source

Field sampling was performed in 1999 to collect data for biological (Diapouli *et al.*, 2000; Kalagia *et al.*, 2000; Kalagia and Karlou-Riga, 2003) and economic parameter estimation (Karlou-Riga, unpublished data). The parameters used for simulation purposes are related to the description of the exploited populations (Tables 2 and 3), vessel and fleet economic and market characteristics (Tables 4 and 5).

Management scenarios

The management actions are tested as scenarios

TABLE 4. – Average vessel and fleet characteristics.

	Trawlers	Beach seiners
Number of vessels	18	35
Capital (euros/vessel)	532753	44560
Gross tonnage (gt/vessel)	92	7.3
Crew (persons/vessel)	6.5	4
Trade costs c1 (%)	9.8	9.8
Annual cost (C2+ C4 + C5 euros/year/vessel)	140419.1	5353.1
Labour cost (c3, % for the owner) ¹	100	100
Opportunity cost (c6, % inv)	2.5	2.5
Interest rate c7 (% debt)	6.2	6.2
Maximum debt accepted (% capital)	75	75
Fishing days (days/year)	226	110
Annual increase in q (%)	1	1

¹ The fishery analysed is an exception in the Mediterranean 'share system'. The crew of the fleets receive a salary.

in the MEFISTO bioeconomic model. Some are realistic, such as the increase in mesh size of trawlers from 28 to 40 mm that took place in 2000 and the withdrawal of eleven of the 35 beach seiners that took place in 2002, while other scenarios are policy proposals, such as the total withdrawal of the beach seine fleet and an effort reduction of 12% in trawler activity.

Scenario 1. In 2000 ($t=1$), trawl mesh size was changed to 40 mm stretched mesh. The resulting changes in the selectivity parameters and their consequences in the biological and economic indicators are analysed. Moreover, the effort reduction in beach seiners arising from the withdrawal of eleven vessels in 2002 ($t=3$) is simulated.

Scenario 2. The effect of the proposed policy measure of complete withdrawal of beach seiners is

TABLE 5. – Market parameters.

	Hake (<i>M. merluccius</i>)	Red mullet (<i>M. barbatus</i>)
Trawlers		
Price (euros/kg)	5.54	5.58
ν (kg secondary/kg target)	20	0
μ (kg secondary)	1	0
ps (euros/kg)	10.4	0
Beach seiners		
Price (euros/kg)	-	5.7
ν (kg secondary/kg target)	-	10
μ (kg secondary)	-	1
ps (euros/kg)	-	9.7

analysed through this scenario, placed as a management event in the fifth year of simulation ($t=5$) and it is added to Scenario 1.

Scenario 3. The effect of a proposed effort reduction in trawler activity is tested. The legal period of fishing is reduced by 12% in year $t=5$ of the simulation. The effects are analysed and added to Scenario 1.

RESULTS

Scenario 1

A fifteen-year projection from 1999 to 2013 is shown in Figure 1 with the management actions that took place in 2000 and 2002. This figure reflects the real trends of the bioeconomic indicators of the Saronikos Gulf hake and red mullet fisheries after the change of the trawlers' mesh size and the with-

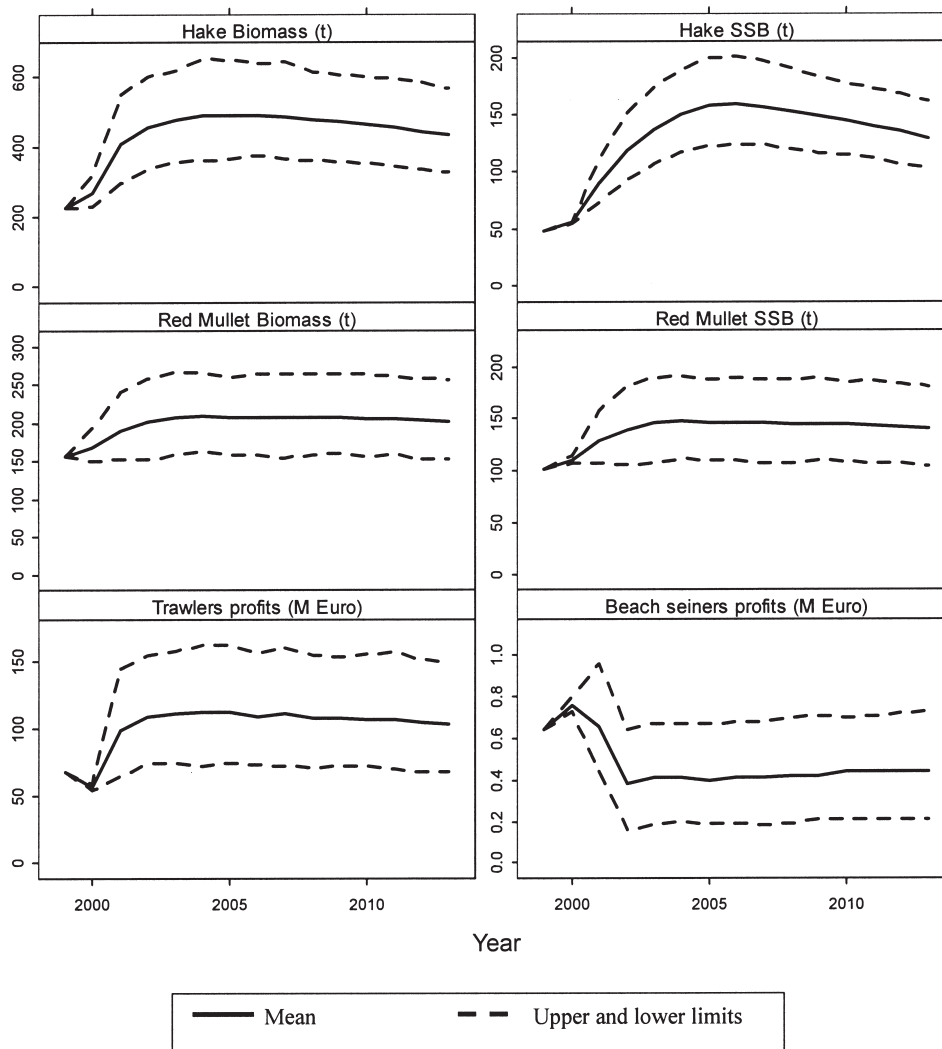


FIG. 1. – Evolution of bioeconomic indicators in a 15-year stochastic simulation. Note that the mesh size change in 2000 and the beach seiner effort reduction in 2002 have some effects on the displayed variables. The projections show the average trajectory and their 5 and 95% confidence intervals.

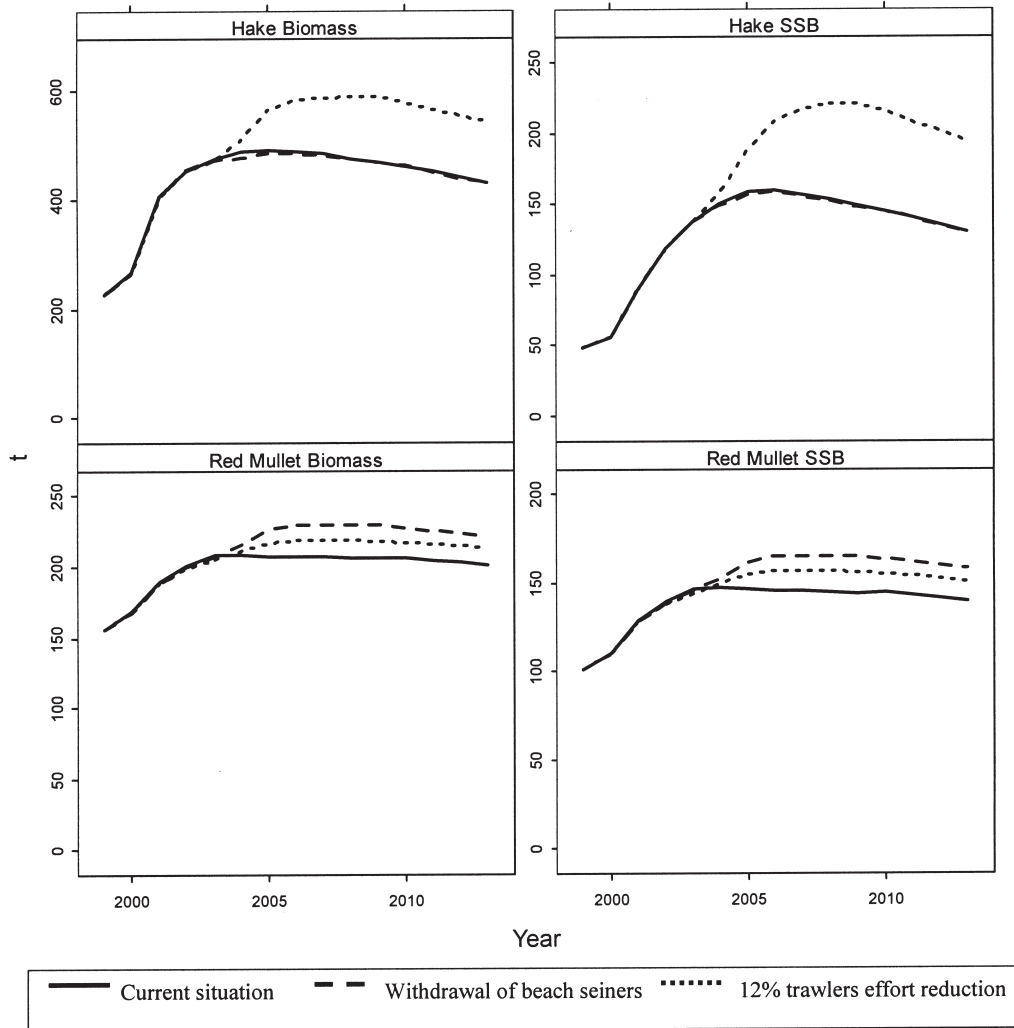


FIG. 2. – Species average biomass and expected evolution of spawning stock with the two management actions proposed as Scenarios 2 and 3 located in 2004.

drawal of eleven beach seiners. The upper and lower limits of the displayed variables represent the uncertainty of the bioeconomic predictions due to the stochasticity in the recruitment process.

The change in mesh size that took place in 2000 has proved to be very useful for the recovery of both species whose juveniles have been reported to be overexploited in the Saronikos Gulf, and also in many Mediterranean fisheries (Karlou-Riga *et al.*, 2000; Karlou-Riga and Vrantzas, 2001; Karlou-Riga *et al.*, 2005; Fernandez *et al.*, 2006; García-Rodríguez *et al.*, 2006; Guijarro *et al.*, 2006; Jadaud *et al.*, 2006). The profitability of the trawl fleet should have been improved after the change in mesh size that brought economic losses only in the first year of its implementation. In the medium term, the profits for the trawlers operating in the Saronikos Gulf would double after the mesh size change and

would be very slightly improved after the effort reduction of beach seiners (2002) that contributed very slightly to the recovery of red mullet. The effort reduction of beach seiners did not bring positive effects to trawlers, which initially suggests that it is not causing the overexploitation of red mullet. If this were the case, an effort reduction of beach seiners would bring positive effects in the medium term. As is observed, in the medium term there is a very slight increase in profits but they are far from the profits before the beach seiner effort reduction in 2002 and even the trawlers' mesh change in 2000.

Scenarios 2 and 3

Figures 2 and 3 show the effects of two potential management actions. The time of both management actions is 2004 and its effects on the bioeconomic

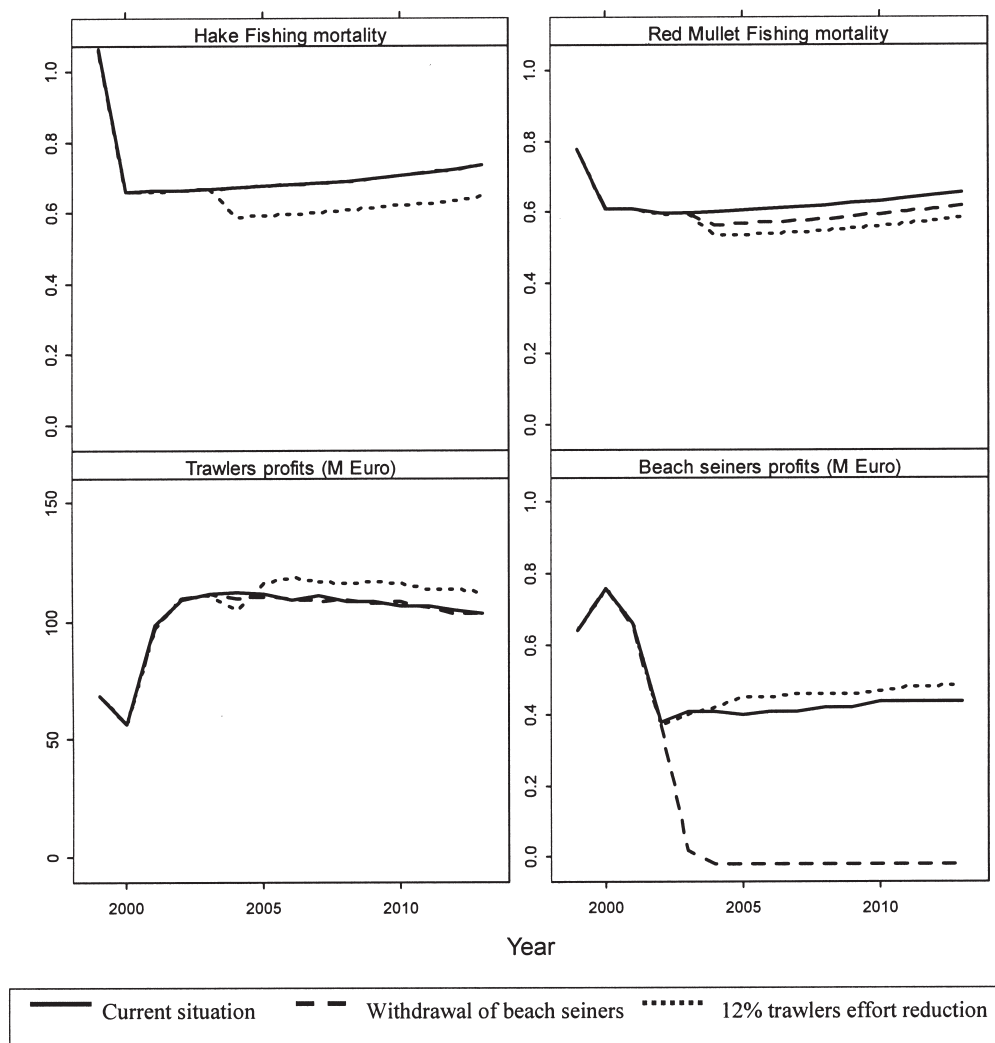


FIG. 3. – Species average fishing mortality projections and fleet profits expectation with the two management actions proposed as Scenarios 2 and 3 located in 2004.

indicators of Saronikos Gulf's hake and red mullet exploitation are predicted. The hake population would respond to the 12% effort reduction of trawlers activity with a significant increase. Red mullet increases its population level after both the effort reduction of trawlers and the total withdrawal of the beach seiners. The positive effect on the population is higher with the withdrawal of beach seiners (Fig. 2).

The fishing mortalities applied to both populations would be significantly reduced after the management actions explained in Scenario 1 and they would be further reduced with the reduction in trawler effort and the complete withdrawal of beach seiners. The most significant effect is obtained with the trawlers' 12% effort reduction. The profitability of trawlers, which should have improved with the management actions taken in 2000 and 2002, would

be further improved after subsequent effort reduction. The improvement would be observed two years after its implementation. On the other hand, beach seiners would benefit from this effort reduction but the profitability of the activity would remain far from its levels in 1999 when there were 35 vessels. The complete withdrawal of beach seiners would not bring significant positive effects on trawlers (Fig. 3).

DISCUSSION

The recent assessments by the SCSA in the GFCM indicate an 11% increase in hake catches after the implementation of the change in mesh size that took place in 1999-2000 (Karlou-Riga *et al.*, 2005). The increase in hake biomass and trawlers'

profits in the short run of the simulation shown in Figure 1 is concordant with this report, which highlights the need to incorporate data from other gears. The multi-species and multi-gear simulation exercise presented here aims to describe the interactions between trawler and beach seine fleets sharing the exploitation of red mullet. The red mullet population is simulated (with MEFISTO) to recover by around 25% with the current management actions of mesh size change for trawlers and the withdrawal of eleven vessels in 2002.

The recommendations for the hake fishery management in the Saronikos Gulf mention a necessary effort reduction of 68% to achieve the *maximum sustainable yield* (Karlou-Riga *et al.*, 2005). The presented simulation of a 12% effort reduction for the trawlers' activity, which represents the prohibition of fishing for one month in the current fishing period of 8 months, shows a significant positive effect, especially on the hake population. The effort reduction is added to the current selectivity pattern after the change in trawlers' mesh size in 2000 and contributes positively to the recovery of the hake population. The trawling fleet benefited by their effort reduction but this benefit is unrelated to the positive effect after the change in mesh size. The positive effects of the change of selectivity patterns have also been proved in multi-species bottom trawl fisheries in the Mediterranean (Sardá *et al.*, 2006). The effort reduction in trawlers' activity in year 5 brings a slight recovery of red mullet and a low increase in profits for the beach seiner fleet.

According to the fishing mortality pattern of the two fleets (Table 3) it is clear that beach seiners catch mainly red mullet of cohorts 1 and 2 and trawlers fish individuals of cohorts 3 to 6. This difference is assumed to have increased after the change in trawlers mesh size in year 1 of the simulation. Although the trawlers' effort reduction results in a higher average fishing mortality reduction of red mullet, the biomass increase after the beach seiners' withdrawal is more positive. The latter occurs because the withdrawal of the beach seiners leads to a higher reduction in fishing mortality of juveniles, leading to an increase in the red mullet population. The harm that beach seiners cause to red mullet juveniles is one of the complaints of the longline and net fleets, as was stated in the introduction.

Another salient aspect of the simulation exercise is the almost null effect of the complete withdrawal

of the beach seiner fleet for the economic profitability of trawlers.

Comparing the present analysis with the MEFISTO simulation analysis in the Gulf of Lions (Leonart *et al.*, 2003), where two trawler and longliner fleets exploit hake, some similarities can be found. First, the 29.6% effort reduction in the trawlers' activity brings a significant recovery in the hake populations, increasing their abundance by 500% in the 25 years of simulation. On the other hand, the recovery seems to be slower in the Gulf of Lions case. The two analyses indicate the need to protect hake juveniles with an effort reduction of the trawling activity, while the Gulf of Saronikos case supports the change in mesh size that took place in 1999-2000. Leonart *et al.*, (2003) report the positive impact of measures aimed at protecting juveniles through selectivity measures but suggest the need for effort reductions in the trawling fleet.

To sum up, it can be concluded that a correct management of the Saronikos Gulf fisheries would be reached through selectivity and effort control of the trawling fleet. The positive effect of the trawlers' mesh size change is reported, and it is suggested that higher effort reductions would allow management goals to be achieved (Karlou-Riga *et al.*, 2005). The withdrawal of the beach seiners would lead to a significant recovery in the red mullet population by preserving their juveniles, but it would not have observable effects on the profitability of the trawling fleet. The fleet interactions are only significant in one direction: the activity of trawlers greatly affects the profits of the beach seiner fleets, but this does not happen in the opposite direction.

ACKNOWLEDGEMENTS

We thank Triantafyllos Kountouris and Argyris Argyrokastritis for their help and advice in the in situ approach to the hake and red mullet fishery in the Gulf of Saronikos and all the staff in the Fisheries Laboratory of the Ministry of Rural Development and Food.

REFERENCES

- Diapouli, E., N. Vrantzas, M. Kalagia and C. Karlou. – 2000. Age and growth of hake (*Merluccius merluccius*) in the Saronikos gulf (in Greek with English abstract), *Proc. 9th Panhellenic Conf. Ichthyologists*, Messologi (Greece). 33-36.

- Griffin, W.L. – 2003. A General Bioeconomic Fisheries Simulation Model: Description, Calibration, Validation, and Application, *Proc. 1st North Am. Fish. Econ. Forum.* 97-112.
- Horwood, J.W. – 1994. Modelling of fisheries management strategies. *Privately published, Ministry of Agriculture, Fisheries and Food, Lowestoft (U.K.).*
- Kalagia, M. and C. Karlou-Riga. – 2003. Comparative study of red mullet growth between different areas and different periods, *Proc. 11th Panhellenic Conf. Ichthyologists*, Preveza (Greece). 87-90.
- Kalagia, M., N. Vrantzas and C. Karlou. – 2000. Age and growth of red mullet (*Mullus barbatus*) in the Saronikos gulf (in Greek with English abstract), *Proc. 9th Panhellenic Conf. Ichthyologists*, Messologi (Greece). 37-40.
- Karlou-Riga, C., I. Anastopoulou and A. Argyrokastritis. – 2005. Hake (*Merluccius merluccius*) Stock Assessment in the Saronikos Gulf (GFCM Geographical Sub-Area 22) in 2004.
- Karlou-Riga, C. and N. Vrantzas. – 2001. Assessment of the state of some demersal fish stocks in the Saronikos Gulf and the Cyclades islands. WD, 2nd Session of the Working Group on Demersal Fisheries, GFCM-SAC, Tunis, Tunisia, 13-16 March 2001
- Karlou-Riga, C., N. Vrantzas and M. Kalagia. – 2000. Evaluation of state of stocks for red mullet (*Mullus barbatus*) and hake (*Merluccius merluccius*) in the Saronikos Gulf (Greece). WD, 1st Session of the Working Group on Demersal Fisheries, GFCM-SAC, Sète, France, 21-23 March 2000.
- Lleonart, J. and F. Maynou. – 2003. Fish stock assessments in the Mediterranean: state of the art. *Sci. Mar.*, 67: 37-49.
- Lleonart, J., F. Maynou, L. Recasens and R. Franquesa. – 2003. A bioeconomic model for Mediterranean fisheries, the hake off Catalonia (western Mediterranean) as a case study. *Sci. Mar.*, 67: 337-351.
- Maynou, F., F. Sardá, S. Tudela and M. Demestre. – 2006. Management strategies for red shrimp (*Arsiteus antennatus*) fisheries in the Catalan sea (NW Mediterranean) based on bio-economic simulation models. *Aquat. Liv. Res.*, 19: 161-171.
- NSSG. – 2000. Results of the sea fishery survey by motor vessels (for the years 2003). 46.
- Punt, A.E. – 1992. Selecting management methodologies for marine resources with an illustration for Southern African hake. *S. Afr. J. Mar. Sci.*, 12: 943-958.
- Punt, A.E. – 1993. The comparative performance of production model and adhoc tuned VPA based feed back control management procedures for the stock of Cape hake off the West Coast of South Africa. *Can. Spec. Publ. Fish. Aq. Sci.*, 120.
- Sardá, F., N. Bahamón, B. Molí and F. Sardá-Palomera. – 2006. The use of a square mesh codend and sorting grids to reduce catches of young fish and improve sustainability in a multi-species bottom trawl fishery in the Mediterranean. *Sci. Mar.*, 70(3): 347-353.
- Schnute, J. – 1985. A general theory for analysis of catch and effort data. *Can. J. Fish. Aq. Sci.*, 42: 414-429.
- Sparre, P.J. and R. Willman. – 1993. Software for bio-economic analysis of fisheries. BEAM 4. Analytical Bio-economic Simulation of Space-structured Multispecies and Multi-fleet Fisheries. Vol. 1. Description of the model. *Computerized information series (Fisheries)*. FAO, 186.
- Ulrich, C., B. Le Gallic, M.R. Dunn and D. Gascuel. – 2002. A multi-species, multi-fleet bioeconomic simulation model for the English Channel artisanal fisheries. *Fish. Res.*, 58: 379-401.

Scient. ed.: A. Guerra.

Received March 2, 2007. Accepted May 2, 2007.

Published online July 11, 2007.