

# Seismic Study of the Iberian Crust, ESCI Valencia Trough survey



A normal incidence seismic reflectin profile to characterize the lithosphere in the basins around the Valencia Trough.

## General information:

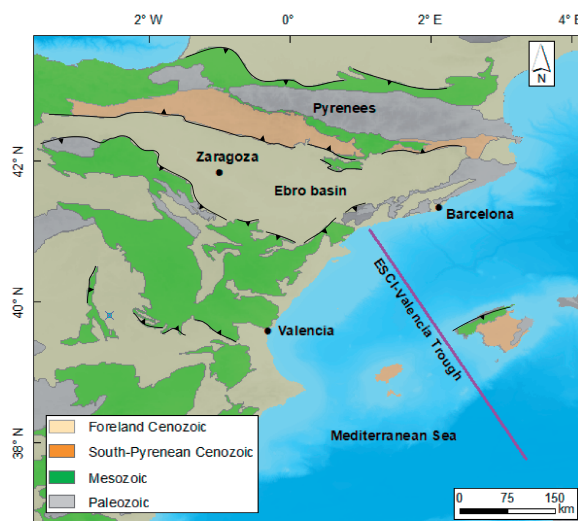
- 1 seismic reflection profiles offshore.
- Acquired between 1991 and 1992 .
- Total lenght of 400 km.
- File format: SEG Y

## Technical specifications:

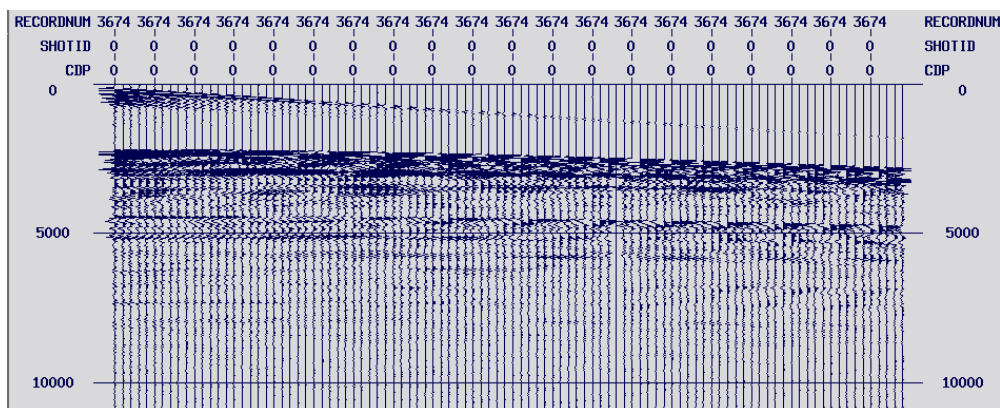
- Number of traces: 180
- Trace interval: 25 m
- Source: airguns (7118 cu. ins.)
- Shot point interval: 75 m
- Record length: 20 s
- Sample rate: 4 ms

## Setting

- E of Spain.
- Valencia Trough and Balearic promontory



## Example of the data ESCI Balear tape 06



## Main references:

- Gallart et al. (1993). Dataset: <http://dx.doi.org/10.20350/digitalCSIC/9937>
- Gallart et al. (1994). [https://doi.org/10.1016/0040-1951\(94\)90076-0](https://doi.org/10.1016/0040-1951(94)90076-0)
- Gallart et al. (1995). <https://doi.org/10.1029/94GL03272>
- Gallart et al. (1997). Rev. Soc. Geol. España, 8 (4), 1995: 401-415.
- Sàbat et al. (1995). Rev. Soc. Geol. España, 8 (4), 1995: 431-448.

## Funding:

- Comisión Internacional de Ciencia y Tecnología (CICYT): GEO89-0858-E, GEO90-0733, PB86-0619, C91-0013.
- C.E.C. Project "Streamers"