

IBERSEIS wide-angle reflection experiment



A wide-angle reflection experiment to constraint the physical properties for the lithosphere across the SW Iberian Massif.

General information:

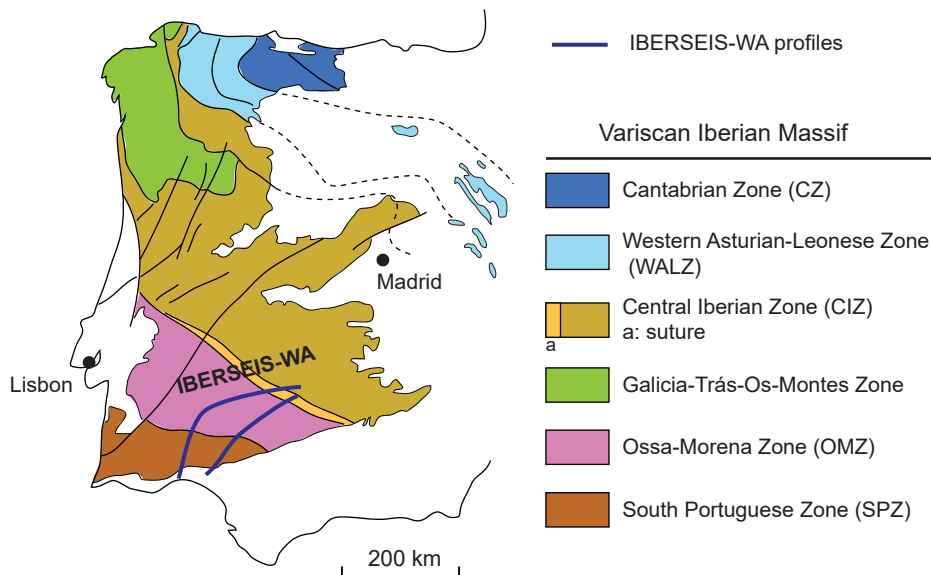
- Two NE-SW wide-angle seismic reflection profiles.
- Acquired in 2003.
- Total length of 300 and 330 km.
- File format: SEGY

Technical specifications:

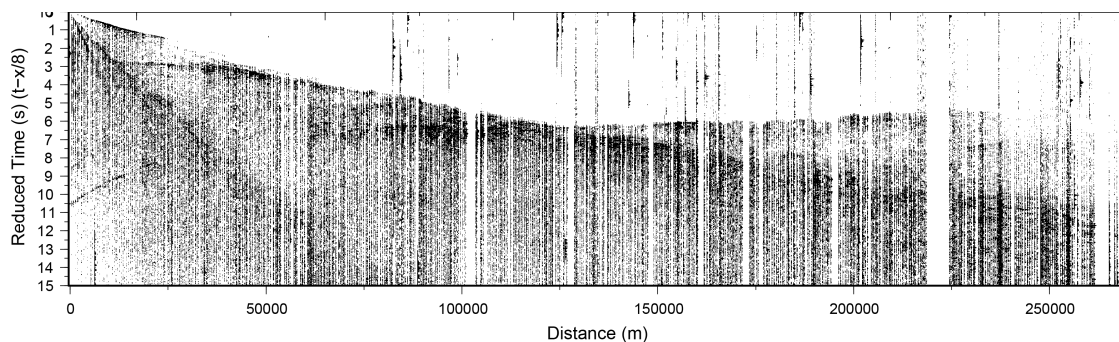
- Receiver type: single component, 10 Hz
- Receiver interval: 150 and 400 m
- Source: 9 shots
- 500-1000kg of chemical explosive each

Setting:

- South of Spain
- Southern Iberian Massif:
South Portuguese Zone,
Ossa-Morena Zone and
southern Central Iberian Zone.



Example of the data:



Main references:

- Ayarza et al. (2010). doi:10.1016/j.pepi.2010.05.004
- Flecha et al. (2009). doi:10.1016/j.tecto.2008.05.033
- Palomeras et al. (2003). <http://dx.doi.org/10.20350/digitalCSIC/9018>
- Palomeras et al. (2009). doi:10.1029/2007JB005050
- Palomeras et al. (2011). doi:10.1029/2011GC003577

Funding agencies:

- Spanish Ministry of Science and Innovation: CGL2004-04623, CSD2006-00041.
- Generalitat de Catalunya: 2005SGR00874.
- Junta de Andalucía.