

High resolution seismic characterization of the Loranca basin,
a possible host for temporary storage of radioactive waste.

General information

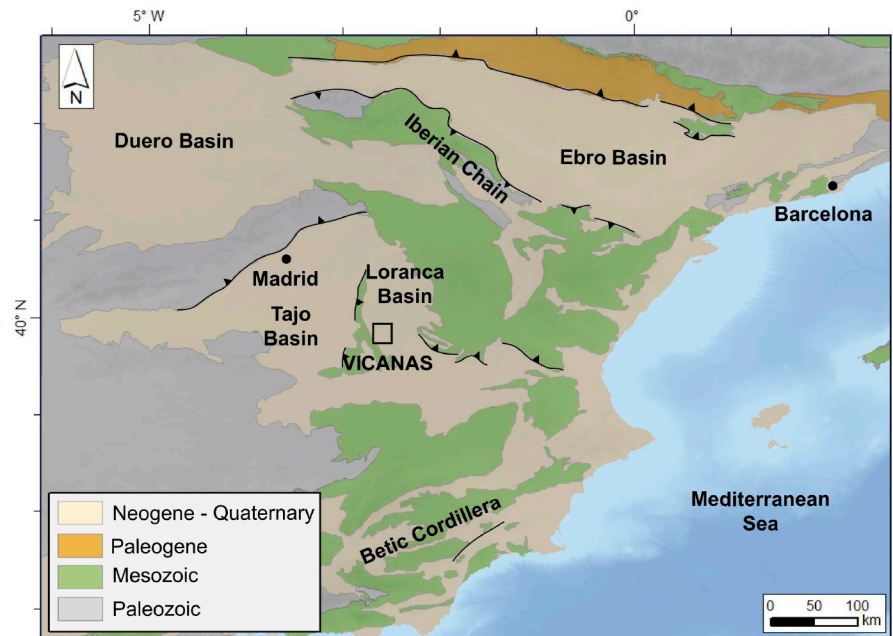
- 3D seismic travel-time tomography.
- Acquired in 2014.
- Area of 500m x 500m.
- File format: SEGY

Technical specifications

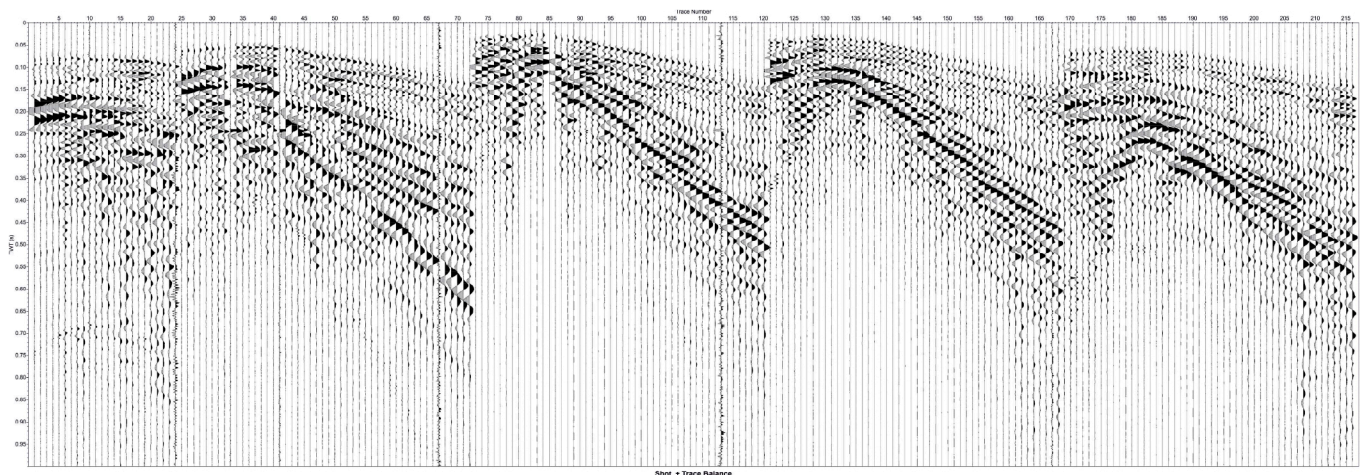
- Receiver number: 240
- Receiver interval: 2 m
- Source interval: 6 m
- Source: accelerated weighdrop (250 kg)
- Record time: 4 s

Setting

- Center of Spain (Cuenca).
- Loranca basin.



Example of the data:



Main references:

- Marzán et al. (2013). Dataset: <http://dx.doi.org/10.20350/digitalCSIC/8636>
- Martí et al. (2019). <https://doi.org/10.5194/se-10-177-2019>

Funding:

- ENRESA