

# Probing dust-obscured star formation in the most massive gamma-ray burst host galaxies<sup>★</sup>

Jochen Greiner<sup>1</sup>, Michał J. Michałowski<sup>2</sup>, Sylvio Klose<sup>3</sup>, Leslie K. Hunt<sup>4</sup>, Gianfranco Gentile<sup>5,6</sup>, Peter Kamphuis<sup>7,8</sup>, Rubén Herrero-Illana<sup>9</sup>, Mark Wieringa<sup>10</sup>, Thomas Krühler<sup>1</sup>, Patricia Schady<sup>1</sup>, Jonathan Elliott<sup>11</sup>, John F. Graham<sup>1</sup>, Eduardo Ibar<sup>12</sup>, Fabian Knust<sup>1</sup>, Ana Nicuesa Guelbenzu<sup>3</sup>, Eliana Palazzi<sup>13</sup>, Andrea Rossi<sup>13</sup>, and Sandra Savaglio<sup>14</sup>

<sup>1</sup> Max-Planck-Institut für extraterrestrische Physik, 85740 Garching, Giessenbachstr. 1, Germany  
e-mail: jcg@mpe.mpg.de

<sup>2</sup> Scottish Universities Physics Alliance, Institute for Astronomy, University of Edinburgh, Royal Observatory, Edinburgh, EH9 3HJ, UK

<sup>3</sup> Thüringer Landessternwarte Tautenburg, Sternwarte 5, 07778 Tautenburg, Germany

<sup>4</sup> INAF-Osservatorio Astrofisico di Arcetri, Largo E. Fermi 5, 50125 Firenze, Italy

<sup>5</sup> Sterrenkundig Observatorium, Universiteit Gent, Krijgslaan 281, 9000 Gent, Belgium

<sup>6</sup> Department of Physics and Astrophysics, Vrije Universiteit Brussel, Pleinlaan 2, 1050 Brussels, Belgium

<sup>7</sup> CSIRO Astronomy & Space Science, Australia Telescope National Facility, PO Box 76, 1710 Epping, Australia

<sup>8</sup> National Centre for Radio Astrophysics, TIFR, Ganeshkind, 411007 Pune, India

<sup>9</sup> Instituto de Astrofísica de Andalucía-CSIC, Glorieta de la Astronomía, s/n, 18008 Granada, Spain

<sup>10</sup> CSIRO Astronomy & Space Science, Locked Bag 194, 2390 Narrabri, Australia

<sup>11</sup> Astrophysics Data System, Harvard-Smithsonian Center for Astrophysics, Garden St. 60, Cambridge, MA 02138, USA

<sup>12</sup> Universidad de Valparaíso, Instituto de Física y Astronomía, Gran Bretaña 1111, Valparaíso, Chile

<sup>13</sup> INAF, Institute of Space Astrophysics and Cosmic Physics, via P. Gobetti 101, 40129 Bologna, Italy

<sup>14</sup> Physics Dept., University of Calabria, via P. Bucci, 87036 Arcavacata di Rende, Italy

Received 5 May 2016 / Accepted 24 June 2016

## ABSTRACT

**Context.** As a result of their relation to massive stars, long-duration gamma-ray bursts (GRBs) allow the pinpointing of star formation in galaxies independent of redshift, dust obscuration, or galaxy mass/size, thus providing a unique tool to investigate star formation history over cosmic time.

**Aims.** About half of the optical afterglows of long-duration GRBs are missed owing to dust extinction and are primarily located in the most massive GRB hosts. It is important to investigate the amount of obscured star formation in these GRB host galaxies to understand this bias.

**Methods.** Radio emission of galaxies correlates with star formation, but does not suffer extinction as do the optical star formation estimators. We selected 11 GRB host galaxies with either large stellar mass or large UV-based and optical-based star formation rates (SFRs) and obtained radio observations of these with the Australia Telescope Compact Array and the *Karl Jansky* Very Large Array.

**Results.** Despite intentionally selecting GRB hosts with expected high SFRs, we do not find any radio emission related to star formation in any of our targets. Our upper limit for GRB 100621A implies that the earlier reported radio detection was due to afterglow emission. We detect radio emission from the position of GRB 020819B, but argue that it is in large part, if not completely, due to afterglow contamination.

**Conclusions.** Half of our sample has radio-derived SFR limits, which are only a factor 2–3 above the optically measured SFRs. This supports other recent studies that the majority of star formation in GRB hosts is not obscured by dust.

**Key words.** galaxies: star formation – radio continuum: galaxies – gamma-ray burst: general

## 1. Introduction

Gamma-ray bursts (GRBs) are short flashes of high-energy photons that, for the brief moment of their existence, are the brightest sources in the  $\gamma$ -ray sky. Present technology is able to detect  $\approx 3$  GRBs per day, out to the most distant corners of the Universe. Not surprisingly, GRBs have been established as a new observational tool for stellar astrophysics, relativistic hydrodynamics, black hole formation, cosmology, gravitational-wave astronomy, cosmic-ray physics, and neutrino astronomy.

Two GRB populations exist: those of long duration and short duration. Although their formation mechanisms differ, at their essence lies the formation of stellar-mass black holes with an accretion disk. Optical spectroscopy has conclusively linked long-duration GRBs (LGRBs) with supernovae, whose parameters (expansion velocities and energetics) suggest the explosion of a massive star (Hjorth et al. 2003; Stanek et al. 2003). Thus, LGRBs have recently been used to infer the cosmic evolution of the star formation rate density (SFRD) up to  $z \sim 9$  (Butler et al. 2010; Elliott et al. 2012; Kistler et al. 2009; Robertson & Ellis 2012; Yüksel et al. 2008). This was possible because GRBs enable the identification of galaxies essentially independent of their luminosity or dust obscuration, thus singling out a population

<sup>★</sup> Based on observations collected with ATCA under ID C2718, and at VLA under ID 13B-017.

that is a potentially powerful probe of galaxy evolution. Hence, galaxies hosting LGRBs (GRBHs) may help fill the incompleteness in the SFRD, especially at the very high redshifts not easily explored with current techniques.

However, to use the GRB rate to trace SFRD in the distant Universe, we first need to understand the relation at low redshift and to investigate any possible biases that could distort the proportionality between the two. Since bright highly star-forming dusty sub-millimetre galaxies (SMGs) contribute 20% to the SFRD at  $z \sim 2-4$  (Michałowski et al. 2010; Perley & Perley 2013), one might expect a similar fraction of GRBs to explode in such galaxies. Indeed, the analysis of GRBs along dusty sightlines, made possible only in recent years by systematic near-infrared (NIR) observations of GRB afterglows, has revealed a class of GRBH that are substantially more massive, evolved, and metal-rich and that have higher SFRs (Krühler et al. 2011; Hunt et al. 2011; Rossi et al. 2012; Perley et al. 2015) than previous samples of hosts of optically bright afterglows (e.g., Savaglio et al. 2009). We emphasize that these GRBHs are apparently typical hosts at  $z \gtrsim 1$ ; they are not extreme examples, as a significant fraction ( $\approx 20-30\%$ , see below) of GRB hosts are massive. Indeed, recent new statistical samples of GRBs and their host galaxies imply that the predominance of low-metallicity, low-mass GRBHs (Le Flocc’h et al. 2003), which are common at  $z \sim 1$ , results from a variety of selection effects (Hjorth et al. 2012; Elliott et al. 2012; Perley et al. 2016). Also, metal-rich hosts have been found at high redshift (Savaglio et al. 2012), however, this does not imply that there is no metallicity dependence. At small redshifts,  $z \lesssim 1.5$ , the overall GRB host population shows a significant aversion to massive systems (Perley et al. 2013). This preference for low-mass hosts at lower redshifts could be explained by a strong metallicity dependence. Based on the mass-metallicity relation, Perley et al. (2015) suggest a cutoff around solar metallicity, while spatially resolved spectroscopy hints at an even lower metallicity cutoff (Graham & Fruchter 2016). Above redshift of around three, this metallicity dependence is not noticeable anymore (Greiner et al. 2015), since the mean metallicity everywhere is well below solar. Thus, the true host galaxy population over cosmic time is more varied (as might be expected given the evolution of the Universe), and there are indications that high-mass, metal-rich, dusty galaxies undergoing major bursts of star formation may contribute to the GRBH population, in particular at redshifts  $>2$ .

Observations at radio wavelengths provide an unobscured view on star-forming galaxies by directly tracking recent ( $\lesssim 100$  Myr) star formation activity through synchrotron radiation emitted by relativistic electrons accelerated in supernova remnants (Condon 1992). Even though the radio emission accounts for only a fraction of the bolometric luminosity of a galaxy, it is well correlated with the infrared emission, which is a good tracer of both the SFR and the dust mass in a galaxy.

Nearly 100 GRBHs of long-duration GRBs have so far been observed at radio frequencies, down to limits between  $3-500 \mu\text{Jy}$  (Berger et al. 2003; Michałowski et al. 2009; Stanway et al. 2010; Hatsukade et al. 2012; Michałowski et al. 2012; Perley 2012; Michałowski et al. 2014; Stanway et al. 2014; Michałowski et al. 2015; Perley et al. 2015; Stanway et al. 2015), but only 15 detections have been reported so far (not counting afterglows; Table 3). The early discovery of a few hosts at  $z \sim 1-2$  with fluxes in the  $100-200 \mu\text{Jy}$  level had initially spurred interest, but these turned out to be exceptions with only two hosts added over the last 5–8 yr (with the exception of  $z < 0.1$  objects). These two hosts are GRB 080207 (Perley 2012), which is an exceptionally dusty system, even compared

with other massive, dusty GRB hosts, e.g., Hunt et al. (2011), Svensson et al. (2012), and GRB 021211 (Michałowski et al. 2012).

Assuming that the radio emission is powered by starbursts, these first detections implied a SFR of order a few hundred to thousand solar masses per year. This has been considered plausible, as the SFR determination based on UV/optical data would only measure the unobscured SFR. The difference in UV-to-radio SFR amounts to two orders of magnitude in some cases.

However, the many radio upper limits collected over the last years have resulted in radio-SFR limits of order  $10-50 M_{\odot}/\text{yr}$ , with some reaching close to the optically determined SFR values of order a few  $M_{\odot}/\text{yr}$ . Particularly worth mentioning is a systematic search for radio emission at  $z < 1$  GRBHs, where the mean  $3\sigma$  flux limit of the 19 undetected hosts is  $<35 \mu\text{Jy}$ , corresponding to an average  $SFR < 15 M_{\odot}/\text{yr}$  (Michałowski et al. 2012). This suggests that the GRB host population is similar to other star-forming galaxies at  $z \gtrsim 1$ .

In order to test the idea that a significant fraction of star formation in high- $z$  GRBHs is obscured, we have undertaken radio continuum observations of GRBHs in the redshift range  $0.5-2$ . We report on our observations of 12 GRB host galaxies with the Australia Telescope Compact Array (ATCA) and the *Karl G. Jansky* Very Large Array (VLA). Section 2 describes the selection criteria imposed on the sample of GRB hosts as well as the observations. Section 3 reports the results, and Sect. 4 gives our best interpretation.

## 2. Selection criteria, observations, and data analysis

We concentrate exclusively on hosts of LGRBs that have (i) a well-detected host galaxy; (ii) an accurately determined redshift; (iii) either multiband photometry to at least the rest-frame NIR such that the galaxy mass and SFR, if rest-frame UV was covered, have been measured; or (iv) optical spectroscopy of the host galaxy that allowed us to estimate the SFR from emission line diagnostics.

From this sample of 84 GRBHs (at the time of proposal writing), we selected those which either have a measured (extinction-corrected) UV/optical-SFR  $>15 M_{\odot}/\text{yr}$  or a high stellar mass of  $\log(M/M_{\odot}) > 10.5$  and are at sufficiently small redshifts to ensure flux detection. Nondetections were ignored in this selection, but mass measurements from different methods were allowed. The mass cut implies that using the mean specific SFR of GRBHs of  $0.4 \text{ Gyr}^{-1}$  at  $z \approx 1$ , the total SFR should be above  $15 M_{\odot}/\text{yr}$ . This results in a total of 11 targets, at redshifts  $0.5 < z < 2.6$ . We observed 6 of these targets with ATCA and another 5 sources with the VLA, with details given in Table 1.

GRB 050219 was not among the originally proposed targets (neither the SFR nor mass was known at the time of observation), but was observed as an ATCA filler target in otherwise not usable gaps. It is thus listed separately at the end of Table 1, which lists the details of all our 12 observed sources.

### 2.1. ATCA

We have chosen to observe with ATCA at 2.1 GHz since the sensitivity is 20% to 70% better than the frequently used 5.5/9 GHz frequencies (see the 2012 version of the CABB sensitivity calculator), and the negative spectral slope results in brighter emission. With this choice, we accept the fact that the synthesized beam is a factor 3–5 worse, but we note that most of the

**Table 1.** Observation log of the GRB host sample.

GRB	RA/Dec (2000.0) <sup>a</sup>	Pos.- error	Telescope/ Config.	Date/Time Start-Stop (UT)	$T_{\text{int}}^b$ (h)	Calibrator	
						Flux	Phase
000210	01:59:15.60 –40:39:32.8	1'0	ATCA 6A	2013 Feb. 08 01:28–08 12:19	3.20	1934-638	0153-410
			ATCA 6A	2013 Feb. 10 03:06–10 11:23	2.46	1934-638	0153-410
020127	08:15:01.42 +36:46:33.4	0'1	VLA B	2013 Nov. 05 13:48–05 14:30	0.75	3C147	J0824+392
			VLA B	2013 Nov. 07 13:03–07 13:47	0.75	3C147	J0824+392
			VLA B	2013 Nov. 08 12:47–08 13:29	0.75	3C147	J0824+392
020819B	23:27:19.48 +06:15:56.0	0'5	VLA B	2013 Dec. 05 01:00–05 01:43	0.75	3C48	J2346+095
			VLA B	2013 Dec. 06 00:11–06 00:55	0.75	3C48	J2346+095
			VLA B	2013 Dec. 06 00:55–06 01:40	0.75	3C48	J2346+095
030528 <sup>c</sup>	17:04:00.33 –22:37:10.0	0'1	ATCA 6A	2013 Feb. 09 15:57–10 02:40	9.37	0823-500	1657-261
080319C	17:15:55.49 +55:23:30.6	0'5	VLA B	2013 Nov. 05 23:27–06 00:09	0.75	3C295	J1638+625
080605	17:28:30.05 +04:00:56.3	0'3	VLA B	2013 Dec. 02 16:33–02 17:24	0.84	3C295	J1751+096
			VLA B	2013 Dec. 12 15:57–02 16:41	0.75	3C295	J1751+096
			VLA B	2014 Jan. 21 13:22–21 14:07	0.75	3C295	J1751+096
081109	22:03:09.59 –54:42:40.5	0'2	ATCA 6A	2013 Feb. 08 21:41–09 07:58	4.67	1934-638	2232-488
			ATCA 6A	2013 Feb. 10 19:34–11 08:00	2.52	1934-638	2232-488
090113	02:08:13.82 +33:25:43.8	0'3	VLA B	2013 Nov. 18 07:36–18 08:20	0.77	3C48	J0221+359
			VLA B	2013 Dec. 06 06:40–06 07:24	0.75	3C48	J0221+359
090926B	03:05:13.94 –39:00:22.2	0'5	ATCA 6A	2013 Feb. 08 01:45–08 12:36	3.20	1934-638	0220-34
			ATCA 6A	2013 Feb. 10 03:23–10 14:22	3.63	1934-638	0220-34
			ATCA 6A	2013 Feb. 12 01:01–12 12:31	11.32	1934-638	0220-34
100621A	21:01:13.08 –51:06:22.5	0'3	ATCA 6A	2013 Feb. 08 22:47–09 08:26	4.52	1934-638	2005-489
			ATCA 6A	2013 Feb. 10 20:02–11 07:49	2.00	1934-638	2005-489
110918A	02:10:09.34 –27:06:19.7	0'2	ATCA 6A	2013 Feb. 08 02:03–08 12:53	3.21	1934-638	0142-278
			ATCA 6A	2013 Feb. 10 02:49–10 11:43	2.48	1934-638	0237-233
			ATCA 6A	2013 Feb. 13:02:00–13 10:39	6.74	1934-638	0142-278
.....	.....	.....	.....	.....	.....	.....	.....
050219	11:05:38.97 –40:41:02.6	1'9	ATCA 6A	2013 Feb. 10 12:24–10 14:27	0.82	1934-638	1104-445
			ATCA 6A	2013 Feb. 10 20:31–10 22:14	0.82	1934-638	1104-445

**Notes.** <sup>(a)</sup> The coordinates refer to the best-known afterglow position. <sup>(b)</sup> On-source integration time per snapshot within the time interval given in the previous column. <sup>(c)</sup> The afterglow position of GRB 030528 has been remeasured on the original data of the first-epoch NTT data (Greiner et al. 2003), leading to a substantial reduction of the positional error.

GRB hosts of our sample have an extent smaller than about 1 arcsec; the exceptions are GRBs 020819B, 050219, 080319C, and 110918A (see below).

With ATCA, we observed our sample sources (project C2718; PI: J. Greiner) with the CFB 1M-0.5K mode in the 6 km configuration, providing 2048 channels per 2048 MHz continuum IF (1 MHz resolution) and 2048 channels per 1 MHz zoom band (0.5 kHz resolution). Most sources were observed over the full range of hour angles to ensure good  $uv$ -plane coverage.

Data analysis was performed using the standard software package MIRIAD (Sault et al. 1995), applying appropriate bandpass, phase, and flux calibrations. Substantial flagging had to be applied to remove radio frequency interference (RFI), removing up to 30% of the original data. Multifrequency synthesis images were constructed using robust weighting (robust = 0) and the full bandwidth between its flagged edges. The noise was determined by estimating the rms in emission-free parts of the cleaned map (using `kvis`).

## 2.2. VLA

We observed five sources at  $S$  band in B configuration (project 13B-017; PI: J. Greiner). The observations were performed in full polarization mode, with a total synthesized bandwidth of 2 GHz, centered at 3.0 GHz. We used standard amplitude and bandwidth calibration (observing 3C48, 3C147, or 3C295,

depending on the source), and a bright nearby phase calibrator for each of the targets (see Table 1). We reduced the data using the Common Astronomy Software Applications package (CASA; McMullin et al. 2007). The noise was determined as the rms in emission-free regions in the images.

The data reduction was problematic for four reasons: (i) the phase calibrators used were not optimal for  $S$  band in the observed configuration, with resolved structure and important closure errors; (ii) the strong radio frequency interference (RFI) was the main culprit for data flagging (see Table 2), except for GRB 080605 (see below); (iii) the presence of strong sources in the field that limited the dynamic range of the synthesized images (last column in Table 2); and (iv) significant gain variation due to variable power from geostationary satellites entering the analog signal path through the sidelobes of the antennas; this affects sources in the declination range from  $-14:5 < \text{Dec} < +5:5$  (e.g., Perley et al. 2015), thus necessitating >60% data flagging for GRB 080605.

## 3. Results

### 3.1. Radio flux measurements

We detect only one of our targets, the nearest one, namely GRB 020819B with a measured flux  $F(3 \text{ GHz}) = 31 \pm 8 \mu\text{Jy}$ . The peak of the radio emission is at RA (2000.0) = 23:27:19.50, Dec (2000) = +06:15:55.8 with an error of 0'3. This is 0'37

**Table 2.** GRB host flux density measurements.

GRB	Freq. (GHz)	Flagged (%)	$F_\nu^a$ ( $\mu\text{Jy}/\text{beam}$ )	Beam size	PA (deg)	Strong field source
000210	2.1	29.6	<32	5''83 x 3''18	3.8	24.3 mJy/beam at 6'8
020127	3	29.7	<60	2''11 x 1''99	-44.2	19.5 mJy/beam at 12'4
020819B	3	19.9	31 $\pm$ 8	2''47 x 2''05	-0.4	3.7 mJy/beam at 4'8
030528	2.1	34.3	<26	9''26 x 2''63	-0.5	10.9 mJy/beam at 7'3
050219	2.1	29.9	<64	5''46 x 3''18	-42.7	10.2 mJy/beam at 3'3
080319C	3	47.8	<40	3''65 x 2''22	-13.6	4.2 mJy/beam at 1'1
080605	3	61.4	<50	4''77 x 2''46	-38.8	12.8 mJy/beam at 6'9
081109	2.1	38.3	<30	5''25 x 3''19	-7.8	4.3 mJy/beam at 1'5
090113	3	25.8	<14	2''47 x 2''21	76.5	3.5 mJy/beam at 6'5
090926B	2.1	34.3	<26	4''95 x 2''99	1.2	25.1 mJy/beam at 6'7
100621A	2.1	32.1	<32	4''54 x 2''76	4.2	18.1 mJy/beam at 17'6
110918A	2.1	30.2	<22	8''52 x 2''66	-1.0	19.0 mJy/beam at 17'7

**Notes.** <sup>(a)</sup> Upper limits are at the  $2\sigma$  confidence level.

away from the center of the radio afterglow position (which itself has a  $0''.5$  error), which is significantly smaller than the beam size. Given the beam size of  $\approx 2''$ , the radio emission is clearly associated with the GRB position.

For all our other targets, we are only able to establish upper limits, in the range of 10–60  $\mu\text{Jy}$  ( $2\sigma$ ; Table 2).

Unfortunately, in many cases we did not reach our design sensitivity (see Table 2), namely 3–5  $\mu\text{Jy}$ , which would have guaranteed that we are sensitive to  $\text{SFR}_{\text{Radio}}$  equal to the measured UV/optical SFR. Yet, the many nondetections imply that  $\text{SFR}_{\text{Radio}}$  is not substantially higher than the UV/optical SFR.

### 3.2. Radio-derived SFRs

A number of relations between star formation and corresponding radio fluxes have been proposed, for example (Yun & Carilli 2002; Bell 2003; Murphy et al. 2011), resulting in differences of order a factor of 2. At our observed radio frequencies, free-free emission is negligible, so we choose to use Eq. (17) of Murphy et al. (2011). We extrapolate fluxes from the rest-frame frequency to 1.4 GHz (as used in that equation) with a power law of slope  $F_\nu \propto \nu^\alpha$  including proper  $k$  correction. This leads to a relation for the radio-derived star formation rate  $\text{SFR}_{\text{Radio}}$  as follows:

$$\left(\frac{\text{SFR}_{\text{Radio}}}{M_\odot/\text{yr}}\right) = 0.059 \left(\frac{F_\nu}{\mu\text{Jy}}\right) (1+z)^{-(\alpha+1)} \left(\frac{D_L}{\text{Gpc}}\right)^2 \left(\frac{\nu}{\text{GHz}}\right)^{-\alpha},$$

where  $F_\nu$  and  $\nu$  are the observer frame radio flux and frequency,  $z$  is the redshift of the GRB, and  $\alpha$  is the spectral slope of the radio continuum emission. Following Yun & Carilli (2002), Murphy et al. (2011), and Perley & Perley (2013), we assume  $\alpha = -0.75$  throughout. For the estimate of the luminosity distance  $D_L$ , we use the cosmological parameters from the latest Planck Collaboration XIII (2016), i.e.,  $H_0 = 67.8 \text{ km s}^{-1}/\text{Mpc}$ ,  $\Omega_m = 0.308$  and  $\Omega_\Lambda = 0.692$ . The results are given in the last column of Table 3. We also include in Table 3 those GRB hosts previously detected in the radio band and, for consistency, use the above equation and parameters to recompute  $\text{SFR}_{\text{Radio}}$ .

There are some discrepancies of our  $\text{SFR}_{\text{Radio}}$  values when compared to literature values.

- Our  $\text{SFR}_{\text{Radio}}$  values are about 20% lower than those in Perley & Perley (2013), owing to the different normalization factors (0.072 vs. 0.059); this is possibly because of some confusion in their Eq. (2) of the sign of the spectral continuum slope, which makes the extrapolation to 1.4 GHz wrong.

In their Eq. (2) the exponent of the  $(1+z)$  dependence and the sign of the exponent in the luminosity distance dependence are wrong, but the  $\text{SFR}_{\text{Radio}}$  values in their Table 4 are computed with the correct dependencies (apart from the above normalization factor). In contrast, we reproduce the  $\text{SFR}_{\text{Radio}}$  values of Perley et al. (2015) to within  $<2\%$ , which is likely due to the different (but not specified) cosmological parameters.

- The  $\text{SFR}_{\text{Radio}}$  values of Berger et al. (2003) are reproduced within a factor of  $<2$  (with their cosmological parameters and their usage of a spectral slope of  $-0.6$  following Fomalont et al. 2002). However, it is not clear how their single  $\text{SFR}_{\text{Radio}}$  is derived from radio measurements at three different frequencies: each of these measurements would give a separate  $\text{SFR}_{\text{Radio}}$ , and the corresponding spread also amounts to a factor of two. Thus, we consider this as (broadly) consistent, but their Eq. (1) also has the sign of the spectral slope confused, and the luminosity distance is in units of Gpc rather than Mpc.
- Stanway et al. (2014) use the same conversion prescription as Berger et al. (2003) and Yun & Carilli (2002), and so a similar comment on the spectral slope sign applies. Stanway et al. (2014) specify the cosmological parameters used, and so we can exactly reproduce their  $\text{SFR}_{\text{Radio}}$  limits for the last four entries of their Table 1 if we use twice their flux error as upper limit. However, for all the other non-detected hosts we fail to reproduce their numbers with that same approach; instead, we find larger limits in proportion of the flux limits. In comparison to the conversion prescription of Murphy et al. (2011) used here, all  $\text{SFR}_{\text{Radio}}$  limits derived with twice their flux error are about a factor 2–3 higher. This is a combination of both the different normalization factor and the steeper slope in extrapolating to 1.4 GHz.
- We can reproduce the  $\text{SFR}_{\text{Radio}}$  values in Hatsukade et al. (2012) except for a factor of exactly 2.0, suggesting that their upper limits are at the  $1\sigma$  confidence level, rather than at  $2\sigma$  as stated.
- We can exactly reproduce the  $\text{SFR}_{\text{Radio}}$  values in Michałowski et al. (2012) when accounting for the different normalizations (5.52 in Bell 2003 vs. 6.35 in Murphy et al. 2011) and cosmological parameters used. For consistency, we recompute their values, and also adopt  $2\sigma$  limits instead of their  $3\sigma$  limits.

For consistency in the interpretation below, we recompute all  $\text{SFR}_{\text{Radio}}$  values from the literature, based on the reported radio

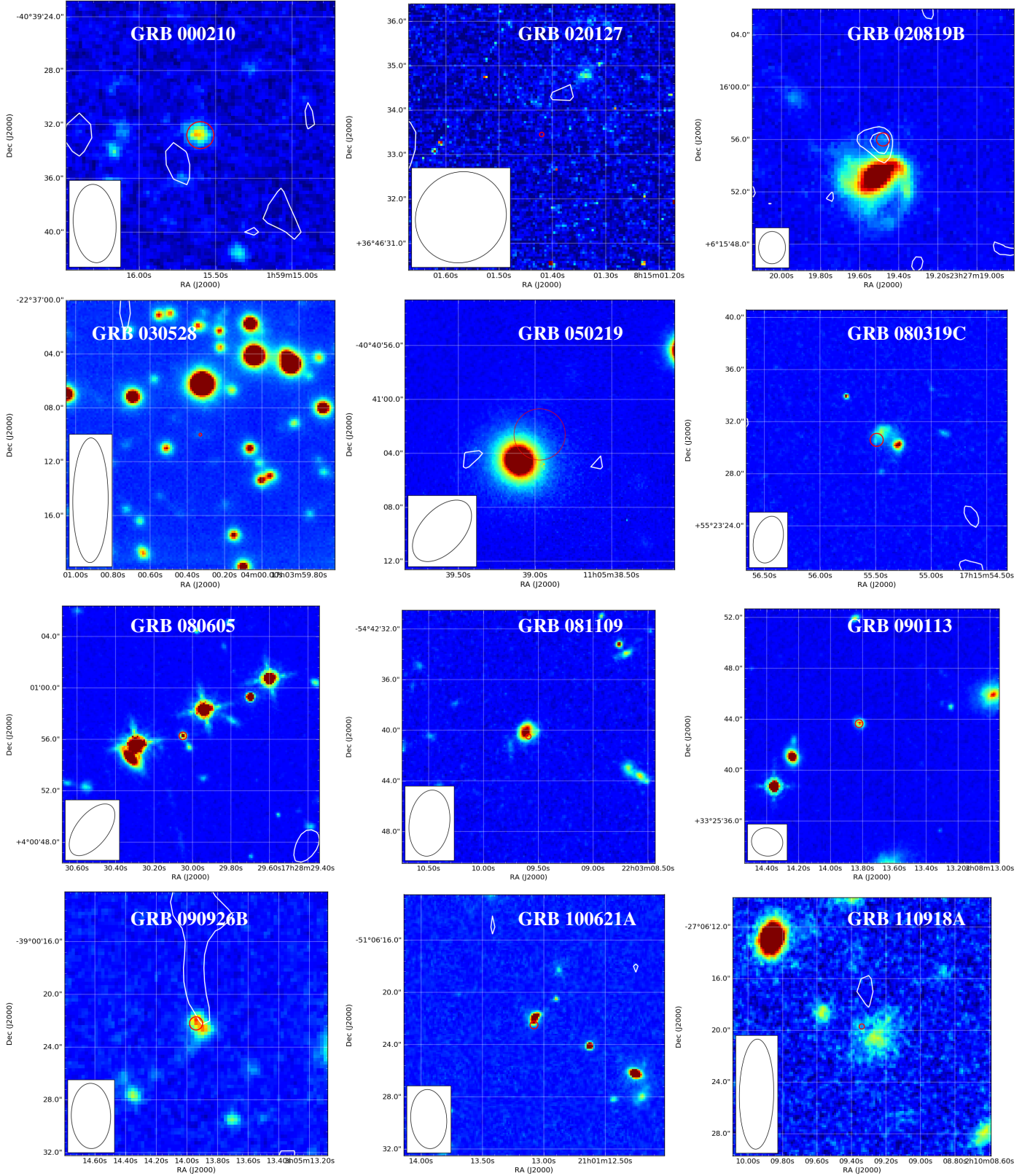


**Table 3.** Physical parameters of GRB host galaxies: the first block is our observed sample; the second block is taken from the literature (upper limits are only included if they are not more than a factor 100 above  $SFR_{opt}$ ).

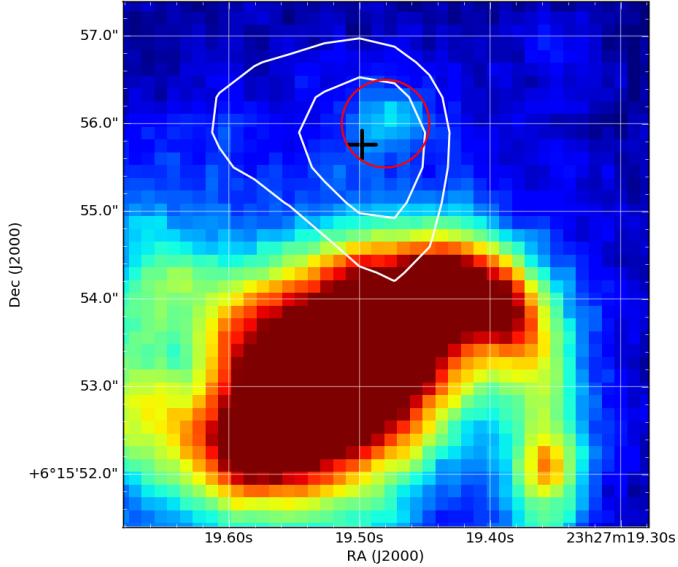
GRB	$z$	$\log(M_*)$ $M_\odot$	$Z/Z_\odot$	$SFR_{UV}$ $M_\odot/\text{yr}$	$SFR_{OII}$ $M_\odot/\text{yr}$	$SFR_{H\alpha}$ $M_\odot/\text{yr}$	$SFR_{Radio}^{b)}$ $M_\odot/\text{yr}$
000210	0.846	$9.31 \pm 0.08$		$2.1 \pm 0.2$	$\approx 3$		$< 86$
020127	1.9ph	$11.51 \pm 0.20$	0.5–1.0	$\approx 6$			$< 1380$
020819B	0.41	$10.50 \pm 0.14$	$\approx 1$	6.9		10.2	$20.2 \pm 5.2$
030528	0.782	10.3	0.1–0.6	4–17	6–37		$< 58$
050219	0.211	9.98		$< 0.1$	$0.06^{+0.01}_{-0.02}$		$< 7$
080319C	1.95	$\leq 12.22$					$< 976$
080605	1.640	$9.9 \pm 0.1$	0.6	$49^{+26}_{-13}$	$55^{+55}_{-22}$	$47^{+17}_{-12}$	$< 821$
081109	0.979	$9.82 \pm 0.09$	$1.17 \pm 0.24$	$33^{+19}_{-13}$	$40^{+18}_{-16}$	$11.8^{+4.1}_{-2.9}$	$< 114$
090113	1.749	10.6				$18^{+10}_{-5}$	$< 266$
090926B	1.24	$10.1^{+0.6}_{-0.5}$	$0.45 \pm 0.18$	$80^{+110}_{-50}$		$26^{+19}_{-11}$	$< 171$
100621A	0.542	$8.98^{+0.14}_{-0.10}$	$0.68 \pm 0.17$	$13^{+6}_{-5}$		$8.7 \pm 0.8$	$< 30$
110918A	0.982	$10.68 \pm 0.16$	$\approx 1$			$41^{+28}_{-16}$	$< 84$
970228	0.695	$8.65 \pm 0.05$ (1)			0.53 (1)		$< 72$ (2) [ $< 58$ ]
980425	0.008	$9.21 \pm 0.52$ (1)			0.19 (1)	0.21 (1)	$0.23 \pm 0.02$ (2) [ $0.10 \pm 0.01$ ]
980703	0.967	$10.00 \pm 0.15$ (1)	0.6 (1)				$750 \pm 180$ (3) [ $187 \pm 18$ ]
990705	0.842	$10.20 \pm 0.76$ (1)		3.31 (8)	6.96 (1)		$< 23$ (9) [ $< 46$ ]
990712	0.433	$9.29 \pm 0.02$ (1)		0.76 (1)	3.01 (1)	2.39 (1)	$< 10.1$ (5) [ $< 28$ ]
991208	0.706	$8.53 \pm 0.37$ (1)			4.52 (1)		$< 35$ (2) [ $< 29$ ]
000418	1.119	$9.26 \pm 0.14$ (1)					$330 \pm 75$ (4) [ $268 \pm 58$ ]
000911	1.058	$9.32 \pm 0.26$ (1)			1.57 (1)		$< 608$ (2) [ $< 490$ ]
010222	1.477	$8.82 \pm 0.26$ (1)					$300 \pm 115$ (4) [ $< 296$ ]
010921	0.451	$9.69 \pm 0.13$ (1)			4.26 (1)	2.5 (1)	$< 32$ (2) [ $< 26$ ]
011121	0.360	$9.81 \pm 0.17$ (1)			2.65 (1)	2.24 (1)	$< 68$ (2) [ $< 55$ ]
020405	0.691	$9.75 \pm 0.25$ (1)			3.74 (1)		$< 165$ (2) [ $< 133$ ]
020903	0.251	$8.87 \pm 0.07$ (1)			2.51 (1)	2.65	$< 5.4$ (2) [ $< 4.3$ ]
021211	1.006	$10.23 \pm 0.63$ (1)				3.1 (6)	$825 \pm 77$ (2) [ $998 \pm 94$ ] <sup>(c)</sup>
030329	0.168	$7.74 \pm 0.06$ (1)			0.09 (1)	0.11 (1)	$< 17$ (2) [ $< 14$ ]
031203	0.105	$8.82 \pm 0.43$ (1)			4.08 (1)	12.68 (1)	$4.8^{+1.4}_{-0.9}$ (5) [ $11.1 \pm 2.6$ ]
040924	0.859	$9.20 \pm 0.37$ (1)			1.88 (1)		$< 274$ (2) [ $< 221$ ]
041006	0.716	$8.66 \pm 0.87$ (1)			0.34 (1)		$< 27$ (9) [ $< 54$ ]
050223	0.591	10.02 (7)		4.3 (8)	1.44 (1)		$93 \pm 31$ (10) [ $217 \pm 72$ ]
050416A	0.654	$9.17 \pm 0.12$ (11)	$0.6 \pm 0.3$ (11)		$2.5 \pm 0.7$ (12)	$4.5^{+1.6}_{-1.2}$ (13)	[ $< 22$ ]
050525A	0.606	$8.1 \pm 0.6$ (11)				$0.07^{+0.21}_{-0.05}$ (13)	$< 53$ (10) [ $< 172$ ] <sup>(d)</sup>
050801	1.560						[ $< 97$ ]
050824	0.830	7.45 (8)	$0.25^{+0.13}_{-0.15}$ (13)			$1.20^{+0.30}_{-0.26}$ (13)	[ $< 24$ ]
050915	2.527						$< 1204$ (2) [ $< 985$ ]
051006	1.059	$10.11 \pm 0.03$ (14)		$98^{+2}_{-1}$ (14)			$51^{+22}_{-18}$ (14) [ $54 \pm 19$ ] <sup>(e)</sup>
051016B	0.936	7.76 (8)	$0.37^{+0.15}_{-0.20}$ (13)			$10.2^{+2.6}_{-2.0}$ (13)	[ $< 35$ ]
051022	0.809	10.29 (7)	$0.6^{+0.2}_{-0.1}$ (13)	58.19 (1)	36.46 (1)	$60^{+12}_{-10}$ (13)	$74 \pm 20$ (15) [ $60 \pm 17$ ] <sup>(f)</sup>
051117B	0.481		$2.0^{+0.9}_{-0.6}$ (13)			$4.7^{+3.9}_{-2.2}$ (13)	[ $< 10$ ]
060218	0.033	$7.78 \pm 0.08$ (1)		0.05 (8)	0.06 (1)	0.05 (1)	[ $< 0.02$ ]
060505	0.089	$9.41 \pm 0.01$ (1)		1.1 (16)	0.74 (1)	0.43 (1)	$0.69 \pm 0.40$ (17) [ $0.69 \pm 0.40$ ]
060614	0.125	$7.95 \pm 0.13$ (1)				0.01 (1)	$< 2.4$ (2) [ $< 1.6$ ]
060729	0.540	$9.13^{+0.04}_{-0.08}$ (18)				$0.96^{+2.21}_{-0.69}$ (13)	$< 60$ (2) [ $< 48$ ] <sup>(g)</sup>
060814	1.923	$10.20^{+0.27}_{-0.20}$ (14)		$209^{+27}_{-53}$ (14)		$54^{+89}_{-19}$ (13)	$256^{+160}_{-70}$ (14) [ $267 \pm 74$ ]
060912A	0.937	$9.23^{+0.08}_{-0.07}$ (11)	$0.8^{+0.2}_{-0.2}$ (13)			$5.1^{+2.1}_{-1.6}$ (13)	[ $< 28$ ]
061021	0.346	$8.5 \pm 0.5$ (11)	$0.5 \pm 0.4$ (11)			$0.05^{+0.03}_{-0.01}$ (13)	[ $< 3$ ]
061110A	0.758					$0.23^{+0.38}_{-0.15}$ (13)	[ $< 33$ ]
061121	1.314	$10.18^{+0.15}_{-0.22}$ (14)		$27^{+27}_{-6}$ (14)			$160^{+58}_{-51}$ (14) [ $168 \pm 54$ ]
070306	1.496	$10.70^{+0.01}_{-0.02}$ (14)		$17^{+7}_{-5}$ (14)		$101^{+24}_{-18}$ (13)	$143^{+61}_{-35}$ (14) [ $150 \pm 38$ ] <sup>(h)</sup>
070318	0.836						$< 223$ (2) [ $< 180$ ]
071003	1.604		$0.7^{+0.2}_{-0.2}$ (13)				$< 83$ (10) [ $< 211$ ]
080207	2.086	$11.51 \pm 0.11$ (6)		$46^{+272}_{-45}$ (15)			$846 \pm 124$ (15) [ $738 \pm 108$ ]
080413B	1.101		$0.4^{+0.4}_{-0.2}$ (13)			$2.1^{+3.1}_{-1.1}$ (13)	$< 39$ (10) [ $< 95$ ]
080517	0.089	$9.58^{+0.12}_{-0.16}$ (19)		$0.43 \pm 0.07$ (19)		$15.5 \pm 0.4$ (19)	$7.6 \pm 1.4$ (19) [ $7.2 \pm 1.3$ ]
081007	0.529	$8.78^{+0.47}_{-0.45}$ (11)	$0.6 \pm 0.3$ (11)			$0.36 \pm 0.07$ (20)	$< 35$ (10) [ $< 99$ ]
090424	0.544	$9.38^{+0.17}_{-0.19}$ (11)	$1.0 \pm 0.3$ (11)			$2.88 \pm 1.14$ (20)	$< 38$ (10) [ $< 110$ ]
091208B	1.063						$< 33$ (10) [ $< 78$ ]
100316D	0.059	$8.93$ (17)		0.30 (17)			$1.73 \pm 0.08$ (17) [ $1.73 \pm 0.08$ ]
100901A	1.408						$< 42$ (10) [ $< 105$ ]
111005A	0.013	$9.68$ (17)		0.16 (17)			$0.08 \pm 0.02$ (17) [ $0.08 \pm 0.02$ ]

**Notes.** <sup>(a)</sup> References are given between parentheses, except for the first block for which these are given in the Appendix, together with more extensive notes on the table entries. SFR values are always meant to be extinction corrected (thus the uncorrected  $SFR_{UV}$  values tabulated in Michałowski et al. (2012) are not included). <sup>(b)</sup> The additional values in brackets for the literature sample are re-computed values from the original papers, or from Perley et al. (2015) who only provided flux limits for the radio non-detections. <sup>(c)</sup> The upper limit of Hatsukade et al. (2012) is marginally inconsistent; see discussion in Michałowski et al. (2012). <sup>(d)</sup> Perley et al. (2015) provides a substantially deeper limit of  $< 10 M_\odot/\text{yr}$ . <sup>(e)</sup> This is consistent with the upper limit of  $< 38 M_\odot/\text{yr}$  of Perley et al. (2015). <sup>(f)</sup> The  $< 53 M_\odot/\text{yr}$  upper limit of Hatsukade et al. (2012) is marginally consistent, if the spectral slope is flatter than  $-0.75$ . <sup>(g)</sup> Stanway et al. (2014) claim a  $2\sigma$  detection with  $55 \pm 24 M_\odot/\text{yr}$  which translates to  $128 \pm 54 M_\odot/\text{yr}$  with our re-calculation, and is thus consistent with Michałowski et al. (2012). <sup>(h)</sup> This detection is inconsistent with the upper limit of  $< 77 M_\odot/\text{yr}$  of Perley et al. (2015) which we will use henceforth.

**References.** (1) Savaglio et al. (2009); (2) Michałowski et al. (2012); (3) Berger et al. (2001); (4) Berger et al. (2003); (5) Stanway et al. (2010); (6) Savaglio (2015); (7) Hunt et al. (2014); (8) Svensson et al. (2010); (9) Hatsukade et al. (2012); (10) Stanway et al. (2014); (11) Vergani et al. (2015); (12) Soderberg et al. (2007); (13) Krühler et al. (2015); (14) Perley et al. (2015); (15) Perley & Perley (2013); (16) Castro Ceron et al. (2010); (17) Michałowski et al. (2015); (18) Cano et al. (2011); (19) Stanway et al. (2015); (20) Japelj et al. (2016).



**Fig. 1.** Radio contours (at 2 $\times$ , 3 $\times$ , 4 $\times$ , and 5 $\times$  the rms in each image) overlotted over the optical host images. The red circle is the GRB afterglow position with its uncertainty (see Table 3). The optical images are taken with VLT/FORS2/R (GRBs 000210, 050219, 090926B), VLT/ISAAC/J (GRB 030528), Gemini-N/MOS/R (GRB 020819B), HST/STIS (GRB 020127), HST/WFC3/F160W (GRBs 080319C, 080605, 081109, 090113, 100621A), and 2.2 m/GROND/r' (GRB 110918A).



**Fig. 2.** Zoom-in on the image of GRB 020819B (taken from [Graham et al. \(2016\)](#)), showing the optical emission at the GRB position more clearly (red circle), where we now detect radio flux (centered on the black cross). The offset to the center of the host galaxy is  $3''$ . The nondetection of the host galaxy at 3 GHz is surprising.

fluxes and frequencies. For the upper limits, we assume that errors are given at  $1\sigma$ , and so we take twice the error as the rms if it is not otherwise given; thus, all upper limits reported below are at the  $2\sigma$  confidence level.

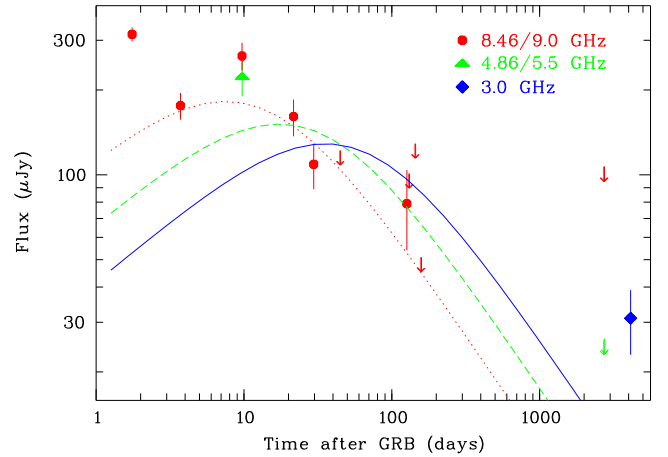
#### 4. Interpretation and discussion

Our prime result is the detection of radio emission at the afterglow position of GRB 020819B. In addition, we also discuss the upper limits of two other specific GRBs before summarizing the sample result and its implications.

##### 4.1. GRB 020819B

The only clearly detected source in our sample is GRB 020819B at  $z = 0.41$ . The star formation rate implied by our radio detection is  $SFR_{\text{Radio}} = 20.2 \pm 5.2 M_{\odot}/\text{yr}$ . This is consistent with the  $2\sigma$  upper limit from [Stanway et al. \(2010\)](#) of  $<22.6 M_{\odot}/\text{yr}$ , which is recomputed as described above. Accounting for the error in our measurement, our  $SFR_{\text{Radio}}$  is only 50% larger than the  $H\alpha$ -based  $SFR_{H\alpha} = 10.2 M_{\odot}/\text{yr}$  from [Levesque et al. \(2010\)](#) (no error given).

However, it is surprising that no radio emission is detected from the nucleus of the host galaxy itself (Fig. 2). With its  $SFR_{H\alpha} = 23.6 M_{\odot}/\text{yr}$ , which is two times larger than at the afterglow position, and similar extinction values for both locations ([Levesque et al. 2010](#)), one would expect a flux of  $\approx 60 \mu\text{Jy}$ . Performing aperture photometry on the Jy/pixel map, we measure the total emission encompassing the host galaxy and afterglow position as  $46 \mu\text{Jy}$ , which results in an integrated flux from the host galaxy of  $15 \pm 8 \mu\text{Jy}$ . This implies a  $2\sigma$  upper limit of  $SFR_{\text{Radio}} < 10 M_{\odot}/\text{yr}$  for the entire host, to be compared with a host  $SFR_{H\alpha} = 23.6 M_{\odot}/\text{yr}$  ([Levesque et al. 2010](#), no error given except a note of a  $\pm 5\%$  flux error, which would transform into a SFR error of about  $\pm 1 M_{\odot}/\text{yr}$ ). The substantially different radio fluxes at the GRB versus host center, despite similar optical SFR, raises doubts about the association of the detected radio



**Fig. 3.** Radio afterglow light curve of GRB 020819B with the early data ( $<160$  days) from [Jakobsson et al. \(2005\)](#), the ATCA upper limits at 2700 days from [Stanway et al. \(2010\)](#), and our VLA measurement (blue hexagon). The red dotted curve is the best-fit model from [Jakobsson et al. \(2005\)](#) to the early-time light curve (the very early data points until 10 days post-burst are explained as scintillation). The green dashed and blue solid curves are the same model, but for the correspondingly lower frequencies, which are shifted in peak time and peak flux according to the standard synchrotron fireball model [Granot & Sari \(2002\)](#).

emission at the afterglow position with star formation. Thus, this raises doubts about the question of possible afterglow contamination of our measurement.

Given that our radio observation was more than 10 yr after the GRB, and the radio afterglow had already declined to  $<35 \mu\text{Jy}$  at 8.46 GHz within 150 days after the GRB ([Frail & Berger 2003](#)), one could dismiss this option. However, looking more closely at the full radio light curve, which is compiled from data from [Jakobsson et al. \(2005\)](#) and [Stanway et al. \(2010\)](#) and includes our measurement (Fig. 3), the situation is less obvious. The best-fit model of the early-time radio data with a decay slope of  $t^{-0.78}$  ([Jakobsson et al. 2005](#)) is shown as well; it is compatible with the theoretically expected decay in an ISM-like environment for an electron index  $p = 2$ . Adopting the same model, but plotting the corresponding light curve at 3 GHz (blue curve in Fig. 3), our measurement is only  $3\sigma$  above the afterglow extrapolation. There are two reasons why the model light curve is an underprediction for late times: firstly, once the blast wave transitions to the nonrelativistic case, the light curve is expected to flatten. Secondly, once the emission is not beamed anymore, also the counterjet will become visible, leading to a doubling of the flux. Also, given some uncertainties in the model fitting due to sparse early radio data and the effect of scintillation, it seems possible to associate our observed flux with either pure afterglow flux or a combination of star formation and afterglow contamination. The latter interpretation is also consistent with the 5.5 GHz limit obtained in Jan. 2010 ([Stanway et al. 2010](#)), which otherwise would imply an only marginally consistent spectral slope for an afterglow spectrum. We therefore adopt an upper limit on the radio-derived SFR at the GRB explosion site of  $SFR_{\text{Radio}} < 20 M_{\odot}/\text{yr}$  as listed in Table 3, and note that the limit would drop to  $SFR_{\text{Radio}} < 10 M_{\odot}/\text{yr}$  if we assigned the observed flux equally to afterglow and star formation origin.

We note in passing that the 1.2 mm ALMA detection ( $140 \pm 30 \mu\text{Jy}$ ) at the position of the afterglow reported by [Hatsukade et al. \(2014\)](#) is by far too bright to be consistent with an afterglow interpretation, although the nondetection of the

host galaxy at 1.2 mm is similarly surprising. With the ALMA and our VLA observations only 12 months apart, which implies a  $<10\%$  change in afterglow flux, we predict a 1.2 mm GRB afterglow flux at the time of the ALMA observation of  $3 \mu\text{Jy}$ . Conversely, assuming that the ALMA 1.2 mm detection of the GRB site is powered by star formation allows us to roughly predict the radio flux. Unfortunately, because of widely different SED shapes the expected flux varies from  $>100 \mu\text{Jy}$  (models corresponding to M 82 and the WR region in Michałowski et al. 2014) to  $3 \mu\text{Jy}$  (spiral Sc); see extended data Fig. 1 in Hatsukade et al. (2014) for illustration. Hence, the ALMA detection is consistent with 10–100% of our 5 GHz flux being powered by star formation.

#### 4.2. GRB 000210

Berger et al. (2003) reported a  $2\sigma$  detection of  $18 \pm 9 \mu\text{Jy}$  in the host galaxy at 8.46 GHz with the VLA, corresponding to  $SFR_{\text{Radio}} = 138 \pm 69 M_{\odot}/\text{yr}$  (re-computed). Our  $2\sigma$  upper limit at 2.1 GHz of  $<32 \mu\text{Jy}$ , corresponding to a  $SFR_{\text{Radio}} < 80 M_{\odot}/\text{yr}$  does not provide any further support in favor or against this low-significance result.

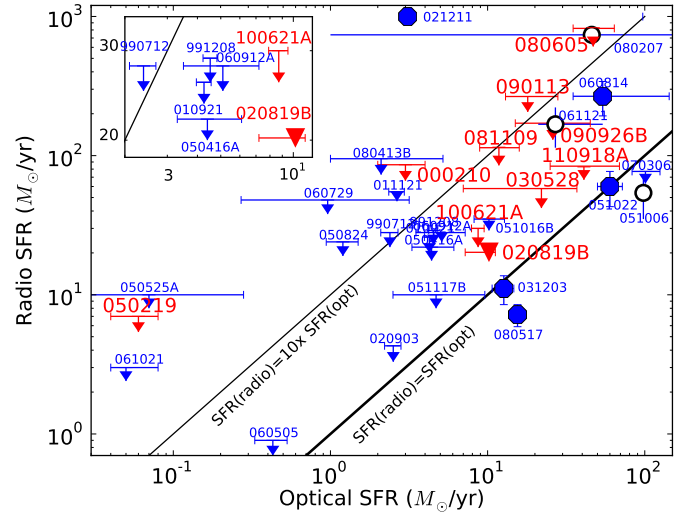
#### 4.3. GRB 100621A

The ATCA radio fluxes of  $F(5.5 \text{ GHz}) = 120 \pm 32 \mu\text{Jy}$  and  $F(9.0 \text{ GHz}) = 106 \pm 42 \mu\text{Jy}$  measured during 15–19 April 2011 (Stanway et al. 2014) are consistent within the errors with the flux measured within a week after the GRB that had been associated with the radio afterglow (Greiner et al. 2013). Based on this coincidence, Stanway et al. (2014) suggested that this early radio emission was not due to the afterglow, but instead due to the host galaxy. Our upper limit at 2.1 GHz makes this interpretation very unlikely, unless the spectrum has a very unusual shape. This in turn implies that the flux measured in April 2011 was still the afterglow, which is not uncommon for LGRBs one year after the burst. Similar 5 GHz afterglow fluxes at 1 week and 1 yr after the burst were also obtained for GRB 030329 (van der Horst et al. 2005, their Fig. 1), and are standard for those afterglows which are either particularly energetic, or expand into a high-density medium (Chandra & Frail 2012, their Fig. 23).

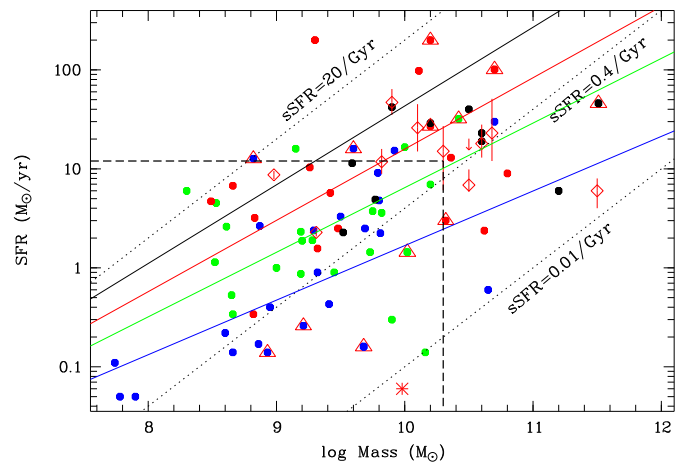
#### 4.4. Little dust-obscured star formation

Our resulting upper limits for the radio-based star formation rate for GRBs 020819B, 030528, 110918A, and 100621A already suggest that the obscured star formation in GRB hosts is at most a factor 2–3 larger than the SFR derived from optical measurements. The increasing collection of upper limits at low flux levels, in particular the many from Perley et al. (2015), provide mounting evidence for only a small amount, if any, of dust-obscured star formation in GRB host galaxies in this redshift range. Figure 4 shows a compilation (based on Table 3) of the ratio of optical versus radio-derived star formation rates. Apart from the five detections at  $SFR_{\text{Radio}}/SFR_{\text{opt}} \approx 1$ , there are more than a dozen upper limits suggesting  $SFR_{\text{Radio}}/SFR_{\text{opt}} < 3$ . This may be explained if GRB hosts are at the beginning of a star formation episode (Michałowski et al. 2015), so the radio emission has not had time to build up yet, unlike  $H\alpha$  emission.

There have been early suggestions that GRB host galaxies show high specific star formation rates (sSFR),



**Fig. 4.** Star formation rates for GRB hosts measured in the radio band vs. those measured in the optical. Red symbols are from our observations, blue from the literature, where  $SFR_{\text{opt}} = SFR_{\text{H}\alpha}$  whenever available, and  $SFR_{\text{opt}} = SFR_{\text{UV}}$  for the rest (open circles) (see Table 3 for details).



**Fig. 5.** Star formation rate vs. stellar mass for GRB hosts from Savaglio (2015), plotted in four redshift intervals:  $z < 0.5$  (blue),  $0.5 < z < 1$  (green),  $1 < z < 2$  (red), and  $z > 2$  (black). Red open triangles show those with previously reported radio detections. Open red diamonds denote our sample with the red asterisk being GRB 050219, not belonging to the original sample selection. The colored lines are the main-sequence relations for each of the four redshift bins (Speagle et al. 2014). The diagonal dashed line indicates the specific  $SFR = 0.4 / \text{Gyr}$ . While high specific SFR (outside the dashed box; the three GRBs at  $\approx 0.2 M_{\odot}/\text{yr}$  were reported only after we made our selection and executed the observations) suggested to be a promising selection criterion for a large radio detection probability, this is not borne out by our observations.

e.g., Castro Ceron et al. (2006), Savaglio et al. (2009), Castro Ceron et al. (2010). A recent compilation of GRB host galaxies with known mass and (optically determined) star formation rates (Savaglio 2015) is shown in Fig. 5, showing that most hosts have a specific SFR larger than 0.4 Gyr. Our sample selection was based on the idea that selecting high sSFR objects at low redshifts could enhance the detection fraction of GRB hosts in the radio band. Our low detection rate is a result of the sSFR varying substantially from host to host, and the lack of any substantial obscured star formation even in the most massive GRB hosts.



## 5. Conclusions

We have observed a subpopulation of massive GRB hosts that had not yet been observed previously in radio wavelengths. Our observations do not add any GRB host to the known sample of radio-detected hosts. Our selection was independent of the amount of dust found in these galaxies (corresponding to a *Spitzer* or *Herschel* detection). Instead, it was intentionally biased toward hosts with either large optical star formation rates or high masses. While there is some room for improvements of our limits with existing telescopes, the majority of GRB hosts are below the few  $\mu\text{Jy}$  rms limit of ATCA and VLA.

Earlier papers have reported radio-derived SFRs typically at least a factor 10 higher than (dust-corrected) optically derived SFRs, therefore concluding that the majority of star formation in GRB hosts is obscured by dust. Combining the more recent measurements in the literature with those presented here, our larger sample does not show strong evidence in favor of such an interpretation. Instead, the radio-based star formation rates, including the best upper limits, are in general not substantially higher than those obtained with optical/UV measurements, and thus the dust-obscured star formation in GRB hosts at low redshifts (our largest redshift is 1.9) is negligible.

Our nondetections include GRB 100621A for which Stanway et al. (2014) had claimed a host detection; our upper limit implies that their radio detection was due to afterglow emission.

We detect GRB 020819B at  $4\sigma$  at 3 GHz, at about 11 yr after the burst. We argue that a good fraction of this emission, if not all, is due to afterglow emission, thus adding GRB 020819B to the group of GRBs with very long-lasting detected radio afterglows, where GRB 030329 is the most prominent example (van der Horst et al. 2008). In a similar case, GRB 980425, with a radio-bright knot at the GRB position, an afterglow interpretation has been excluded (Michałowski et al. 2014).

*Acknowledgements.* We thank the anonymous referee for constructive comments. J.G. and S.K. express particular thanks to K. Bannister, R. Wark, and J. Collier for support during the ATCA observations. J.G. acknowledges support by the DFG cluster of excellence “Origin and Structure of the Universe” ([www.universe-cluster.de](http://www.universe-cluster.de)), and M.J.M. the support of the UK Science and Technology Facilities Council. R.H.I. acknowledges support from the Spanish MINECO through grants AYA2012-38491-C02-02 and AYA2015-63939-C2-1-P, partially funded by FEDER funds. P.S., J.F.G., and T.K. acknowledge support through the Sofja Kovalevskaja award to P. Schady from the Alexander von Humboldt Foundation Germany. S.K. acknowledges support by DFG grant Kl 766/16-1. The Australia Telescope Compact Array is part of the Australia Telescope National Facility, which is funded by the Commonwealth of Australia for operation as a National Facility managed by CSIRO. The National Radio Astronomy Observatory is a facility of the National Science Foundation operated under cooperative agreement by Associated Universities, Inc. This research has made use of the GHoSts database ([www.grbhosts.org](http://www.grbhosts.org)), which is partly funded by *Spitzer*/NASA grant RSA Agreement No. 1287913.

## References

Atteia, J.-L., Kawai, N., Lamb, D., et al. 2003, GCN, #2256  
 Baumgartner, W. H., Barthelmy, S. D., Cummings, J. R., et al. 2009, GCN, #9939  
 Bell, E. F. 2003, *ApJ*, 586, 794  
 Berger, E., Kulkarni, S. R., & Frail, D. A. 2001, *ApJ*, 560, 652  
 Berger, E., Cowie, L. L., Kulkarni, S. R., et al. 2003, *ApJ*, 588, 99  
 Berger, E., Fox, D. B., Kulkarni, S. R., Frail, D. A., & Djorgovski, S. G. 2007, *ApJ*, 660, 504  
 Briggs, M. S. 2009, GCN, #9957  
 Butler, N. R., Dullighan, A., Ford, P., et al. 2003, GCN, #2279  
 Butler, N. R., Bloom, J. S., Poznanski, D., et al. 2010, *ApJ*, 711, 495  
 Cano, Z., Bersier, D., Guidorzi, C., et al. 2011, *MNRAS*, 413, 669  
 Castro Ceron, J. M., Michałowski, M. J., Hjorth, J., et al. 2006, *ApJ*, 653, L85  
 Castro Ceron, J. M., Michałowski, M. J., Hjorth, J., et al. 2010, *ApJ*, 721, 1919  
 Chandra, P., & Frail, D. A. 2012, *ApJ*, 746, 156  
 Cenko, S. B., Tanvir, N. R., Ofek, E. O., et al. 2011, GCN, #12367

Clemens, C., Krühler, T., & Greiner, J. 2008, GCN, #8515  
 Condon, J. J. 1992, *ARA&A*, 30, 575  
 Cummings, J., Barthelmy, S. D., Baumgartner, W., et al. 2008, GCN, #7839  
 D’Avanzo, P., Covino, S., Antonelli, L. A., et al. 2008, GCN, #8501  
 Elliott, J., Krühler, T., Klose, S., et al. 2011, GCN, #12366  
 Elliott, J., Greiner, J., Khochfar, S., et al. 2012, *A&A*, 539, A113  
 Elliott, J., Krühler, T., Greiner, J., et al. 2013, *A&A*, 556, A23  
 Fomalont, E. B., Kellermann, K. I., Partridge, R. B., Windhorst, R. A., & Richards, E. A. 2002, *AJ*, 123, 2402  
 Fox, D. W. 2002, GCN, #1249  
 Fox, D. W., & Frail, D. A. 2002, GCN, #1250  
 Fox, D. W., Djorgovski, S. G., & Kulkarni, S. R. 2002, GCN, #1306  
 Frail, D. A., & Berger, E. 2003, GCN, #1842  
 Frederiks, D. D., Hurley, K., Svinikin, D. S., et al. 2013, *ApJ*, 779, 151  
 Fynbo, J. P. U., Malesani, D., Jakobsson, P., & D’Elia, V. 2009, GCN, #9947  
 Garcia, M., Piro, L., Garmire, G., & Nichols, J. 2000, GCN, #544  
 Golenetskii, S., Aptekar, R., Mazets, E., et al. 2008, GCN, #7487  
 Golenetskii, S., Aptekar, R., Frederiks, D. D., et al. 2011, GCN, #12362  
 Gorosabel, J., Jensen, B. L., Olsen, L. F., et al. 2000, GCN, #545  
 Gorosabel, J., Christensen, L., Hjorth, J., et al. 2003, *A&A*, 400, 127  
 Graham, J. F., & Fruchter, A. S. 2016, *ApJ*, submitted [[arXiv:1511.01079](https://arxiv.org/abs/1511.01079)]  
 Graham, J. F., Fruchter, A. S., Levesque, E. M., et al. 2016, *ApJ*, submitted [[arXiv:1511.00667](https://arxiv.org/abs/1511.00667)]  
 Granot, J., & Sari, R. 2002, *ApJ*, 568, 820  
 Greiner, J., Rau, A., & Klose, S. 2003, GCN, #2271  
 Greiner, J., Krühler, T., Nardini, M., et al. 2013, *A&A*, 560, A70  
 Greiner, J., Fox, D. B., Schady, P., et al. 2015, *ApJ*, 809, 76  
 Hatsukade, B., Hashimoto, T., Ohta, K., et al. 2012, *ApJ*, 748, 108  
 Hatsukade, B., Ohta, K., Endo, A., et al. 2014, *Nature*, 510, 247  
 Hjorth, J., Sollerman, J., Møller, P., et al. 2003, *Nature*, 423, 847  
 Hjorth, J., Malesani, D., Jakobsson, P., et al. 2012, *ApJ*, 756, 187  
 Hullinger, D., Barthelmy, S. D., Barbier, L., et al. 2005, GCN, #3038  
 Hunt, L. K., Palazzi, E., Rossi, A., et al. 2011, *ApJ*, 736, L36  
 Hunt, L. K., Palazzi, E., Michałowski, M. J., et al. 2014, *A&A*, 565, A112  
 Immler, S., Beardmore, A. P., Cummings, J. R., et al. 2008, GCN, #8500  
 Jakobsson, P., Frail, D. A., Fox, D. B., et al. 2005, *ApJ*, 629, 45  
 Jakobsson, P., Vreeswijk, P. M., Xu, D., & Thöne, C. C. 2008, GCN, #7832  
 Japelj, J., Vergani, S. D., Salvaterra, R., et al. 2016, *A&A*, 590, A129  
 Kann, D. A., Laux, U., Klose, S., Ertel, S., & Greiner, J. 2008, GCN, #7829  
 Kennea, J. A., & Krimm, H. A. 2009, GCN, #8806  
 Kistler, M. D., Yüksel, H., Beacom, J. F., et al. 2009, *ApJ*, 705, L104  
 Klose, S., Henden, A., Greiner, J., et al. 2002, GCN, #1520  
 Krimm, H. A., Barthelmy, S. D., Beardmore, A. P., et al. 2009, GCN, #8804  
 Krühler, T., Greiner, J., Schady, P., et al. 2011, *A&A*, 534, A108  
 Krühler, T., Fynbo, J. P. U., Geier, S., et al. 2012a, *A&A*, 546, A8  
 Krühler, T., Malesani, D., Milvang-Jensen, B., et al. 2012b, *ApJ*, 758, A46  
 Krühler, T., Malesani, D., Fynbo, J. P. U., et al. 2015, *A&A*, 581, 125  
 Kuin, N. P. M., & Immler, S. 2008, GCN, #8523  
 Küpcü-Yoldas, A., Greiner, J., Klose, S., Krühler, T., & Savaglio, S. 2010, *A&A*, 515, L2  
 Le Floc’h, E., Duc, P.-A., Mirabel, I. F., et al. 2003, *A&A*, 400, 499  
 Levan, A. J., Tanvir, N. R., Wiersema, K., Berger, E., & Fox, D. 2011, GCN, #12368  
 Levesque, E. M., Kewley, L. J., Graham, J. F., & Fruchter, A. S. 2010, *ApJ*, 712, L26  
 Mangano, V., Sbarufatti, B., Evans, P. A., & Krimm, H. A. 2011, GCN, #12364  
 Marisaldi, M., Fornari, F., Labanti, C., et al. 2008, GCN, #7457  
 McConnell, D., Subrahmanyan, R., Wieringa, M. H., et al. 2000, GCN, #560  
 McMullin, J. P., Waters, B., Schiebel, D., Young, W., & Golap, K. 2007, in Proc. Astronomical Data Analysis Software and Systems XVI, Oct. 15–18, 2006, Tucson (Arizona), eds. R. A. Shaw, F. Hill, & D. J. Bell., *ASP Conf. Ser.* 376, 127  
 Michałowski, M. J., Hjorth, J., Malesani, D., et al. 2009, *ApJ*, 693, 347  
 Michałowski, M. J., Hjorth, J., Watson, D., et al. 2010, *A&A*, 514, A67  
 Michałowski, M. J., Kamble, A., Hjorth, J., et al. 2012, *ApJ*, 755, 85  
 Michałowski, M. J., Hunt, L. K., Palazzi, E., et al. 2014, *A&A*, 562, A70  
 Michałowski, M. J., Gentile, G., Hjorth, J., et al. 2015, *A&A*, 582, 78  
 Milvang-Jensen, B., Goldoni, P., Tanvir, N. R., et al. 2010, GCN, #10876  
 Moin, A., Tingay, S., Phillips, C., et al. 2008, GCN, #8636  
 Morii, N., Nakajima, M., Matsuoka, M., et al. 2009, GCN, #9943  
 Murphy, E. J., Condon, J. J., Schinnerer, E., et al. 2011, *ApJ*, 737, 67  
 Olivares Estay, F., Rossi, A., Greiner, J., Yoldas, A., & Küpcü Yoldas, A. 2009, GCN, #8812  
 Pagani, C., Barthelmy, S. D., Baumgartner, W. H., et al. 2008, GCN, #7442  
 Perley, D. A. 2012, in Gamma-Ray Bursts 2012, Proc. of Conf., PoS(GBR2012)  
 Perley, D. A., & Perley, R. A. 2013, *ApJ*, 778, 172  
 Perley, D. A., Cenko, S. B., Bloom, J. S., et al. 2009, *AJ*, 138, 1690  
 Perley, D. A., Levan, A. J., Tanvir, N. R., et al. 2013, *ApJ*, 778, 128

- Perley, D. A., Perley, R. A., Hjorth, J., et al. 2015, *ApJ*, **801**, 102
- Perley, D. A., Tanvir, N. R., Hjorth, J., et al. 2016, *ApJ*, **817**, 8
- Piro, L., Frail, D. A., Gorosabel, J., et al. 2002, *ApJ*, **577**, 680
- Planck Collaboration XIII. 2016, A&A, in press,  
DOI: 10.1051/0004-6361/201525830
- Rau, A., Salvato, M., & Greiner, J. 2005, *A&A*, **444**, 425
- Ricker, G., Atteia, J.-L., Kawai, N., et al. 2002, GCN, #1229
- Robertson, B. E., & Ellis, R. S. 2012, *ApJ*, **744**, 95
- Rossi, A., Kloke, S., Ferrero, P., et al. 2012, *A&A*, **545**, A77
- Rossi, A., Piranomonte, S., Savaglio, S., et al. 2014, *A&A*, **572**, A47
- Sault, R. J., Teuben, P. J., & Wright, M. C. H. 1995, in *Astronomical Data Analysis Software and Systems IV*, eds. R. Shaw et al., *ASP Conf. Ser.*, **77**, 433
- Savaglio, S. 2015, GHostS database, <http://www.grbhosts.org>, accessed Nov.
- Savaglio, S., Glazebrook, K., & Le Borgne, D. 2009, *ApJ*, **691**, 182
- Savaglio, S., Rau, A., Greiner, J., et al. 2012, *MNRAS*, **420**, 627
- Sbarufatti, B., Barthelmy, S. D., Burrows, D. N., et al. 2008, GCN, #7828
- Soderberg, A. M., Nakar, E., Cenko, S. B., et al. 2007, *ApJ*, **661**, 982
- Speagle, J. S., Steinhardt, C. L., Capak, P. L., & Silverman, J. D. 2014, *ApJS*, **214**, 15
- Stanek, K. Z., Matheson, T., Garnavich, P. M., et al. 2003, *ApJ*, **591**, L17
- Stanway, E. R., Davies, L. J. M., & Levan, A. J. 2010, *MNRAS*, **409**, L74
- Stanway, E. R., Levan, A. J., & Davies, L. J. M. 2014, *MNRAS*, **444**, 2133
- Stanway, E. R., Levan, A. J., Tanvir, N. R., et al. 2015, *MNRAS*, **446**, 3911
- Stornelli, M., Celidonio, G., Muller, J. M., et al. 2000, GCN, #540
- Svensson, K. M., Levan, A. J., Tanvir, N. R., Fruchter, A. S., & Strolger, L.-G. 2010, *MNRAS*, **405**, 57
- Svensson, K. M., Levan, A. J., Tanvir, N. R., et al. 2012, *MNRAS*, **421**, 25
- Tanvir, N. R., Wiersema, K., Levan, A. J., et al. 2011, GCN, #12365
- de Ugarte Postigo, A., Gorosabel, J., Castro-Tirado, A. J., & Thöne, C. C. 2011, GCN, #12375
- Ukwatta, T. N., Barthelmy, S. D., Baumgartner, W. H., et al. 2010, GCN, #10870
- Updike, A., Nicuesa Guelbenzu, A., Nardini, M., Krühler, T., & Greiner, J. 2010, GCN, #10874
- van der Horst, A., Rol, E., Wijers, R. A. M. J., et al. 2005, *ApJ*, **634**, 1166
- van der Horst, A., Kamble, A., Resmi, L., et al. 2008, *A&A*, **480**, 35
- Vanderspek, R., Villaseñor, J., Jernigan, J. G., et al. 2002, GCN, #1508
- Vergani, S. D., Salvaterra, R., Japelj, J., et al. 2015, *A&A*, **581**, A102
- Wiersema, K., Tanvir, N., Vreeswijk, P., et al. 2008, GCN, #7517
- Yüksel, H., Kistler, M. D., Beacom, J. F., & Hopkins, A. M. 2008, *ApJ*, **683**, L5
- Yun, M. S., & Carilli, C. L. 2002, *ApJ*, **568**, 88

## Appendix A: Notes on individual targets

*GRB 000210* was a BSAX-detected burst with a duration of about 20 s (Stornelli et al. 2000), with its X-ray and optical afterglow rapidly identified (Garcia et al. 2000; Gorosabel et al. 2000). Radio observations revealed a source with  $99 \pm 21 \mu\text{Jy}$  one week after the GRB, with  $2\sigma$  upper limits before and after this detection down to  $55 \mu\text{Jy}$  and  $32 \mu\text{Jy}$ , respectively (McConnell et al. 2000; Piro et al. 2002). The host galaxy at a redshift of  $z = 0.8463$  (Piro et al. 2002) with a mass of  $9.31 \pm 0.08 M_{\odot}/\text{yr}$  Svensson et al. (2010) is marginally subluminal with  $M_B = -20.18$  mag with an SED-fitting based UV star formation rate of  $SFR_{UV} = 2.1 \pm 0.2 M_{\odot}/\text{yr}$  (Gorosabel et al. 2003), which is consistent with  $\approx 3 M_{\odot}/\text{yr}$  as derived from the [OII] line (Piro et al. 2002). Berger et al. (2003) reports the detection of the host galaxy in the sub-mm and radio with a weighted flux of  $2.97 \pm 0.88$  mJy at 350 GHz (based on three separate SCUBA observations with individual nondetections) and  $18 \pm 9 \mu\text{Jy}$  at 8.46 GHz (VLA), implying a  $SFR_{\text{submm}} = 560 \pm 170 M_{\odot}/\text{yr}$ .

*GRB 020127* was a HETE II-detected burst with  $T90 \approx 5$  s (Ricker et al. 2002). *Chandra* follow-up observations revealed an X-ray counterpart (Fox 2002; Fox et al. 2002) and also a faint radio counterpart, but no optical afterglow, was identified (Fox & Frail 2002). The spectral energy distribution of the host galaxy is very red, leading to an extremely red object (ERO) classification. Using a dust-obscured star-forming galaxy template, Berger et al. (2007) derive the following parameters: a photometric redshift of  $1.9^{+0.2}_{-0.4}$ , an absolute rest-frame magnitude  $M_{AB(B)} = -23.5 \pm 0.1$  mag, a stellar mass of the host in the range  $10^{11} - 10^{12} M_{\odot}$  (consistent with a more recent estimate of  $10^{11.51} M_{\odot}$  by Hunt et al. 2014), and an unobscured star formation rate of  $\approx 6 M_{\odot}/\text{yr}$ . Furthermore, a comparison to the mass-metallicity relation of UV-selected galaxies at similar redshift indicates that the host of GRB 020127 has a high metallicity in the range of about  $0.5 - 1 Z_{\odot}$  (Berger et al. 2007).

*GRB 020819B* was a HETE II-detected burst with  $T90 \approx 20$  s (Vanderspek et al. 2002); this burst is indeed GRB 020819B, although most papers in the literature designate this burst as GRB 020819. While even deep NIR imaging did not reveal an afterglow (Klose et al. 2002), VLA observations at 8.46 GHz revealed a radio afterglow, declining from about  $380 \mu\text{Jy}$  to  $<35 \mu\text{Jy}$  over the course of 150 days (Frail & Berger 2003). The underlying host galaxy, a  $8''$  diameter barred spiral, was identified by Jakobsson et al. (2005) at  $z = 0.41$ , with the GRB position about  $3''$  off the galaxy core. The best-fit galaxy model implies a stellar mass of  $10^{10.4} M_{\odot}$ , extinguished by  $A_V = 2.2 \pm 0.4$  mag (Küpcü-Yoldas et al. 2010). The burst occurred in a high (about  $Z_{\odot}$ ) metallicity environment in which the host and burst site have similar metallicity (Levesque et al. 2010; Graham et al. 2016). An early attempt to detect the host galaxy with ATCA revealed  $2\sigma$  upper limit on its 5.5 and 9.0 GHz flux of 22 and 92  $\mu\text{Jy}$ , respectively (Stanway et al. 2010), implying a limit on the radio-derived  $SFR_{\text{Radio}} < 8 M_{\odot}/\text{yr}$ . Other SFR estimates were obtained by Savaglio et al. (2009) ( $SFR_{UV} = 6.9 M_{\odot}/\text{yr}$ ), Levesque et al. (2010) ( $SFR_{H\alpha} = 10.2 M_{\odot}/\text{yr}$ ) and by Svensson et al. (2010) ( $SFR_{\text{SED}} = 14.5 M_{\odot}/\text{yr}$ ). Recently, ALMA detections of the CO(3–2) line and the 1.2 mm continuum at  $1''$  angular resolution were also reported (Hatsukade et al. 2014). These detections showed the CO(3–2) emission centered on the nucleus of the host, while the 1.2 mm continuum is significantly detected only at the star-forming region  $\approx 3''$  away from the nucleus, where the GRB occurred.

*GRB 030528* was a HETE II-detected burst with  $T90 \approx 40$  s (Atteia et al. 2003) and a very low peak energy of the prompt emission, putting this burst in the category of X-ray flashes. A NIR (Greiner et al. 2003) and X-ray counterpart (Butler et al. 2003) were identified. Spectroscopy of the host galaxy allowed Rau et al. (2005) to determine the redshift, a stellar mass of  $2 \times 10^{10} M_{\odot}$ , a metallicity of  $0.1 - 0.6 Z_{\odot}$ , and extinction-corrected star formation rates of  $SFR_{UV} = 4 - 17 M_{\odot}/\text{yr}$  and  $SFR_{\text{OII}} = 6 - 37 M_{\odot}/\text{yr}$ , the relatively large range caused by applying different methods. Savaglio et al. (2009) estimate a stellar mass of  $10^{8.82 \pm 0.39} M_{\odot}$ .

*GRB 050219* was a *Swift*-detected burst with  $T90 = 23$  s (Hullinger et al. 2005). No optical or radio afterglow was detected. Rossi et al. (2014) identify a  $6''$  diameter early-type galaxy at the border of the  $1'9$  UVOT-enhanced X-ray error circle. A VLT/X-shooter spectrum reveals a redshift of  $z = 0.211$ , and a surprisingly low star formation rate of  $0.06^{+0.01}_{-0.02} M_{\odot}/\text{yr}$  was derived based on the nonresolved [O II] doublet (Rossi et al. 2014). Based on the spectral energy distribution, Rossi et al. (2014) further derive a stellar mass of  $10^{9.98} M_{\odot}$ .

*GRB 080319C* was a *Swift*-, AGILE-, and Konus-detected burst with  $T90 = 20$  s (Pagani et al. 2008; Marisaldi et al. 2008; Golenetskii et al. 2008) and a well-covered optical afterglow, the spectroscopy of which revealed a redshift of  $z = 1.95$  (Wiersema et al. 2008). Keck imaging revealed a bright, blue  $3''$  diameter galaxy interpreted as the host (Perley et al. 2009), although a relation to the  $z = 0.81$  intervening absorber is not excluded. In the host interpretation, the stellar mass is an unparalleled  $\log(M_{\star}/M_{\odot}) = 12.22 \pm 0.47 M_{\odot}$  (Savaglio 2015). Because of this high stellar mass we included this object in our sample, even though no star formation rate measurement has been reported yet. Recent evidence suggests that this large galaxy is a foreground object (Perley, priv. comm.), and thus the mass of the host of GRB 080319C remains unknown.

*GRB 080605* was a bright *Swift*-detected burst with multiple peaks over a duration of about 80 s (Sbarufatti et al. 2008; Cummings et al. 2008), and a bright optical afterglow (e.g., Kann et al. 2008), allowing the detection of a wealth of absorption lines in a quick FORS spectrum revealing a redshift of  $z = 1.6398$  (Jakobsson et al. 2008). The bright, blue host galaxy was discovered with late GROND imaging (Krühler et al. 2011), and studied in more detail by Krühler et al. (2012a), who find a stellar mass of  $8^{+1.3}_{-1.6} \times 10^9 M_{\odot}$ , a  $SFR_{H\alpha} = 31^{+12}_{-6} M_{\odot}/\text{yr}$  (as well as  $SFR_{\text{OII}} = 55^{+55}_{-22} M_{\odot}/\text{yr}$  and  $SFR_{\text{SED}} = 49^{+26}_{-13} M_{\odot}/\text{yr}$ ), and a metallicity of  $0.6 Z_{\odot}$ . X-shooter spectroscopy resulted in  $SFR_{H\alpha} = 47^{+17}_{-12} M_{\odot}/\text{yr}$  Krühler et al. (2015), which is consistent with the earlier result.

*GRB 081109* was a *Swift*- and *Fermi*/GBM-detected burst with a duration of 40 s (Immler et al. 2008) with a bright X-ray (Immler et al. 2008) and NIR counterpart (D'Avanzo et al. 2008), but only a faint optical counterpart, which is caused due to substantial extinction along the line of sight (Clemens et al. 2008). In the search for a radio afterglow, Moin et al. (2008) established a  $2\sigma$  upper limit of  $<184 \mu\text{Jy}/\text{beam}$  (4.9 GHz) at 15 days post-burst. The host galaxy is very bright and blue, thus even detected with *Swift*/UVOT (Kuin & Immler 2008), thus providing a well-covered spectral energy distribution; such a fit gives a stellar mass of  $\log(M_{\star}/M_{\odot}) = 9.8 \pm 0.09$ , modest host extinction of  $A_V^{\text{host}} = 1.0 \pm 0.2$  mag, and a  $SFR_{\text{SED}} = 33^{+19}_{-13} M_{\odot}/\text{yr}$  (Krühler et al. 2011). Spectroscopy reveals the redshift ( $z = 0.9787$ ) and a host-extinction-corrected  $SFR_{\text{OII}} = 40^{+18}_{-16} M_{\odot}/\text{yr}$  (Krühler et al. 2011), while  $SFR_{H\alpha} = 11.8^{+4.1}_{-2.9} M_{\odot}/\text{yr}$  and a

metallicity of  $1.17 Z_{\odot}$  was derived from the X-shooter spectrum (Krühler et al. 2015).

*GRB 090113* is a *Swift*- and *Fermi*/GBM-detected burst with a duration of 20 s (Krimm et al. 2009) with an X-ray (Kennea & Krimm 2009) but no optical counterpart (e.g., Olivares et al. 2009). The host galaxy is reported by Krühler et al. (2012b) based on the association with an unpublished NIR counterpart together with a redshift of  $z = 1.749$  based on a X-shooter spectrum. Based on the  $H\alpha$  line flux, Krühler et al. (2015) derive a star formation rate of  $18^{+10}_{-5} M_{\odot}/\text{yr}$ .

*GRB 090926B* was a *Swift*-, *Fermi*/GBM-, and MAXI-detected burst with  $T_{90} = 80\text{--}110$  s (Baumgartner et al. 2009; Morii et al. 2009; Briggs 2009). No optical/radio afterglow was detected. A single galaxy was detected within the  $1''.4$  UVOT-enhanced X-ray position uncertainty. Since it shows emission lines together with several absorption features at a common redshift of  $z = 1.24$ , this was interpreted as the host galaxy (Fynbo et al. 2009). The spectral energy distribution is well fit with an extinguished host model with  $A_V^{\text{host}} = 1.4^{+0.3}_{-0.2}$  mag, a stellar mass of  $\log(M_{\star}/M_{\odot}) = 10.1^{+0.6}_{-0.5}$ , and an extinction-corrected  $SFR_{\text{SED}} = 80^{+110}_{-50} M_{\odot}/\text{yr}$  (Krühler et al. 2011). Based on the  $H\alpha$  line, Krühler et al. (2015) derive a star formation rate of  $26^{+19}_{-11} M_{\odot}/\text{yr}$ , and from the same X-shooter spectrum obtain a metallicity of  $0.45 Z_{\odot}$ .

*GRB 100621A* was a *Swift*-detected burst with a duration of about 100 s with a bright X-ray afterglow (Ukwatta et al. 2010), but a highly dust-extinguished optical/NIR afterglow

(Utdike et al. 2010; Greiner et al. 2013), suffering an extinction of  $A_V = 3.8$  mag (Krühler et al. 2011). At a redshift of  $z = 0.542$  (Milvang-Jensen et al. 2010), the host is bright enough to be seen in the DSS2 (Utdike et al. 2010) with an absolute magnitude of  $M_B = -20.68 \pm 0.08$  mag, stellar mass of  $\log(M_{\star}/M_{\odot}) = 8.98^{+0.14}_{-0.10}$ , and a host extinction-corrected (SED-derived)  $SFR_{\text{UV}} = 13^{+6}_{-5} M_{\odot}/\text{yr}$  (Krühler et al. 2011). Based on the  $H\alpha$  line in a X-shooter spectrum of the host, Krühler et al. (2015) derive  $SFR_{H\alpha} = 8.7 \pm 0.8 M_{\odot}/\text{yr}$ . Vergani et al. (2015) estimate a metallicity of  $0.4 Z_{\odot}$ , while Krühler et al. (2015) derives  $0.68 Z_{\odot}$ . ATCA radio observations during 15–19 April 2011 at 5.5 and 9 GHz yield fluxes of  $F(5.5 \text{ GHz}) = 120 \pm 32$  and  $F(9.0 \text{ GHz}) = 106 \pm 42$  (Stanway et al. 2014).

*GRB 110918A* was one of the most intense IPN-triggered bursts ever, with a duration extending over at least 250 s (Golenetskii et al. 2011; Frederiks et al. 2013). *Swift*/XRT follow-up of the IPN error box identified the X-ray afterglow (Mangano et al. 2011) and subsequent optical observations identified a bright optical/NIR counterpart (Tanvir et al. 2011; Elliott et al. 2011; Cenko et al. 2011) spectroscopy, which revealed a redshift of  $z = 0.984$  (Levan et al. 2011; Ugarte Postigo et al. 2011). The host galaxy is relatively large (half-light radius of 11 kpc) and massive  $\log(M_{\star}/M_{\odot}) = 10.68 \pm 0.16$ , with a host-integrated metallicity around  $Z_{\odot}$ , and a  $H\alpha$ -based star formation rate of  $SFR_{H\alpha} = 41^{+28}_{-16} M_{\odot}/\text{yr}$  (Elliott et al. 2013). Krühler et al. (2015) derive  $SFR_{H\alpha} = 23^{+28}_{-11} M_{\odot}/\text{yr}$ .