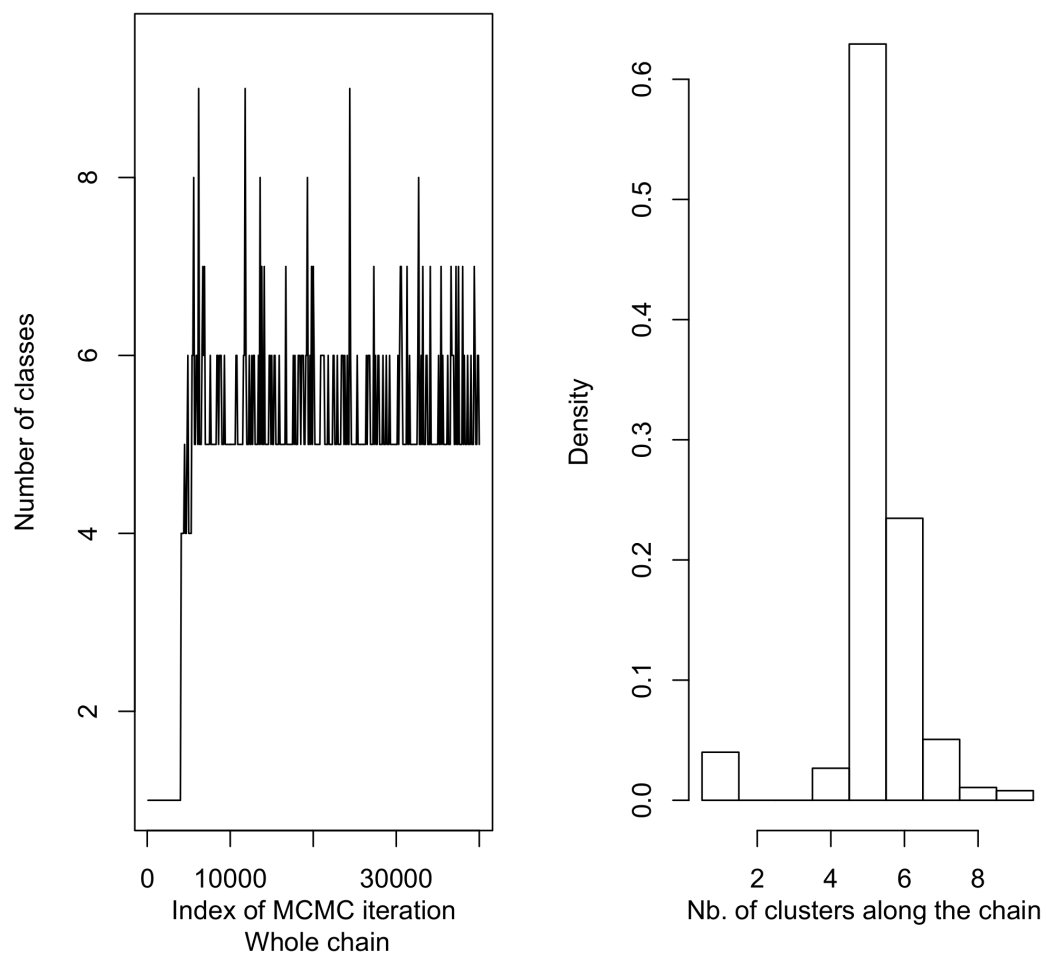


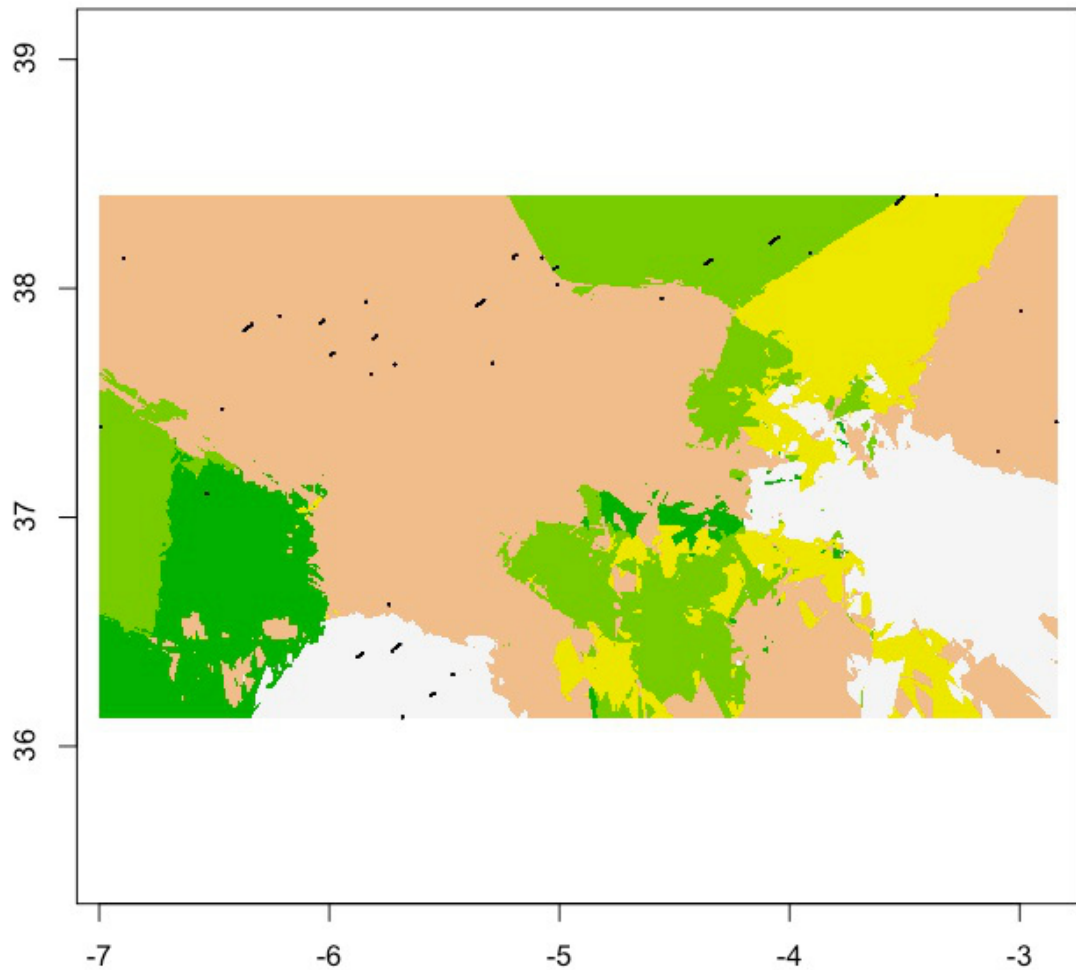
Supplementary material

02 January, 2015

- Galarza, J.A. Sanchez-Fernandez, B. Fandos, P. Soriguer, R. The genetic landscape of the Iberian red deer (*Cervus elaphus hispanicus*) after 30 years of big-game hunting in southern Spain. Journal of Wildlife Management. In Press



**Figure 1S.** Mixing index of MCMC interactions along the run. B) Number of genetic red deer groups ( $K$ ) inferred after burnin.



**Figure 2S.** Geneland (Guillot et al. 2005) output showing the map of posterior probabilities of red deer's population membership based on multilocus Bayesian inference. X and Y axis show longitude and latitude respectively. Dots indicate sampled populations and colours indicate the clusters to which they are assigned.

#### Literature Cited

Guillot, G., A. Estoup, F. Mortier, and J. F. Cosson. 2005. A Spatial Statistical Model for Landscape Genetics. *Genetics* 170:1261-1280.